

Rhodena Wind Farm

Desktop Wetlands



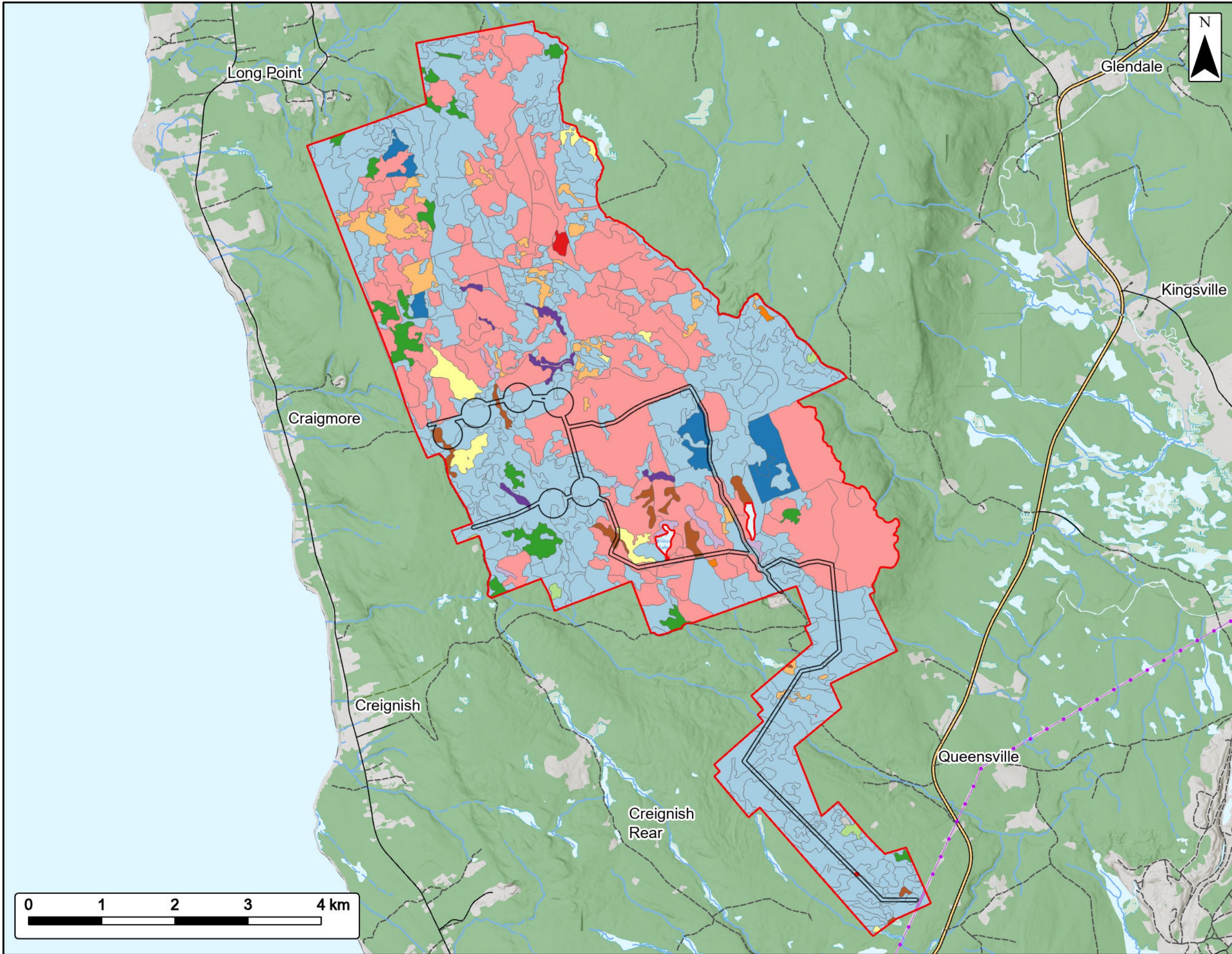
Study Area	
Assessment Area	
NSNRR Wetlands	
Bog or Fen	
Fen	
Marsh	
Salt Marsh	
Swamp	
Utilities (line)	
Existing Transmission Lines	
Transportation	
Trans-Canada Highway	
Road	
Unpaved Road	
Water Features	
Mapped Stream	
Mapped Indefinite Stream	
Mapped Lakes and Rivers	
Mapped Wet Areas	



Coordinate System: NAD83 UTM Zone 20N Sources: ESRI Basemaps, GeoNOVA, SNSIS, NSNRR, ACCDC, IBA Canada, CNWI, HERE, Garmin, USGS

Date:	Oct 2024	Project #:	24-9952
Scale:	1:50,000	Drawing #:	7.15
Drawn By:	K. Wallace		
Checked By:	H. Mosher		





Rhodena Wind Farm

Forestry



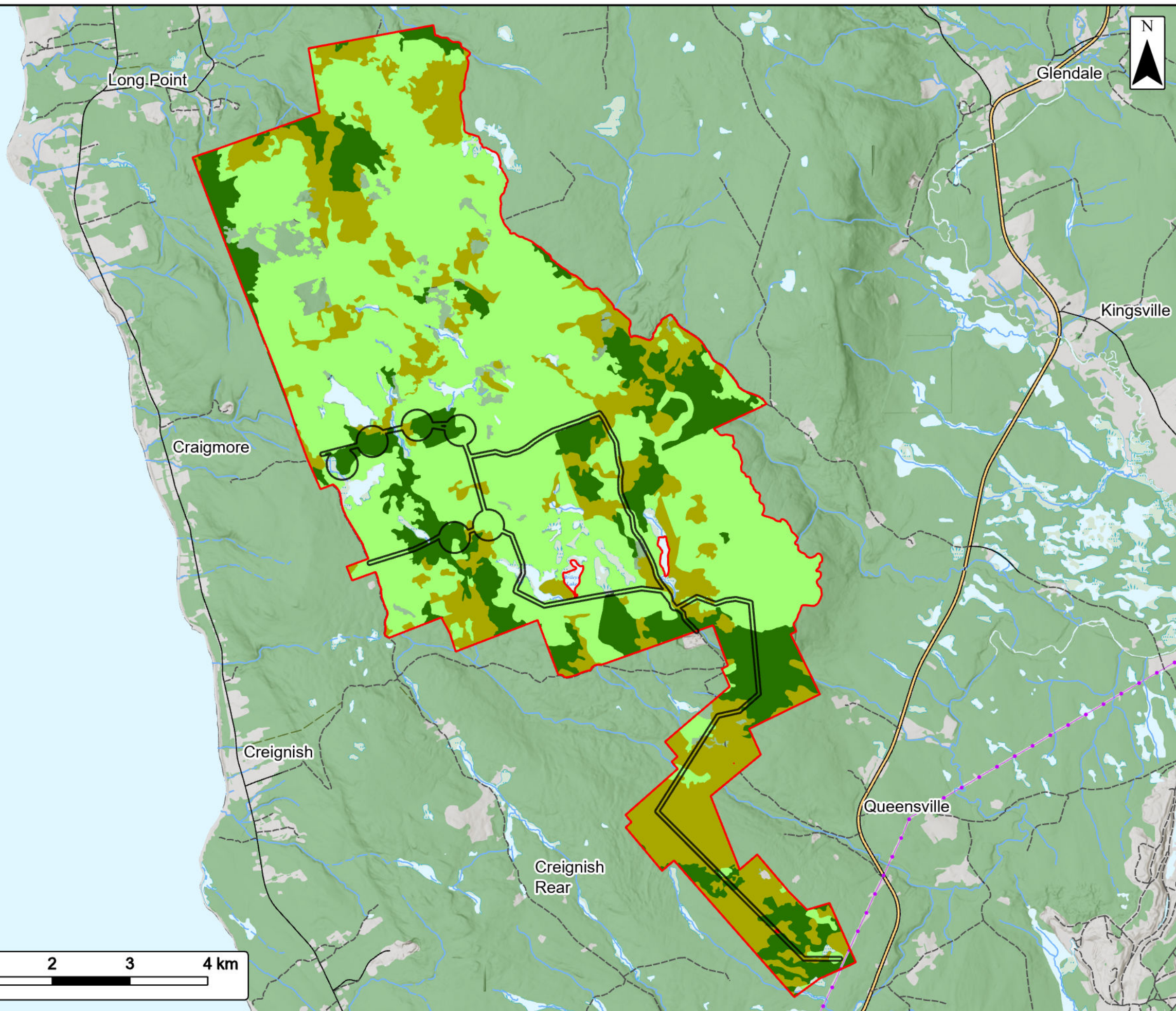
Study Area		Utilities (line)	
Assessment Area		Existing Transmission Lines	
FORNON		Transportation	
Natural stand		Trans-Canada Highway	
Treated		Road	
Old field		Unpaved Road	
Dead		Water Features	
Plantation		Mapped Stream	
Alders less than 75% cover		Mapped Indefinite Stream	
Clear cut		Mapped Lakes and Rivers	
Partial depletion verified		Mapped Wet Areas	
Wetlands general			
Beaver flowage			
Open bogs			
Treed bogs			
Wetland In Lake			
Inland water			
Gravel pit			
Powerline corridor			



Coordinate System: NAD83 UTM Zone 20N Sources: ESRI Basemaps, GeoNOVA, SNSIS, NSNRR, ACCDC, IBA Canada, CNWI, HERE, Garmin, USGS

Date:	Oct 2024	Project #:	24-9952
Scale:	1:50,000	Drawing #:	7.16
Drawn By:	K. Wallace		
Checked By:	H. Mosher		



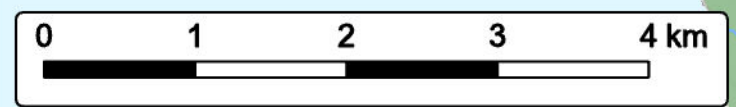


Rhodena Wind Farm

Forestry



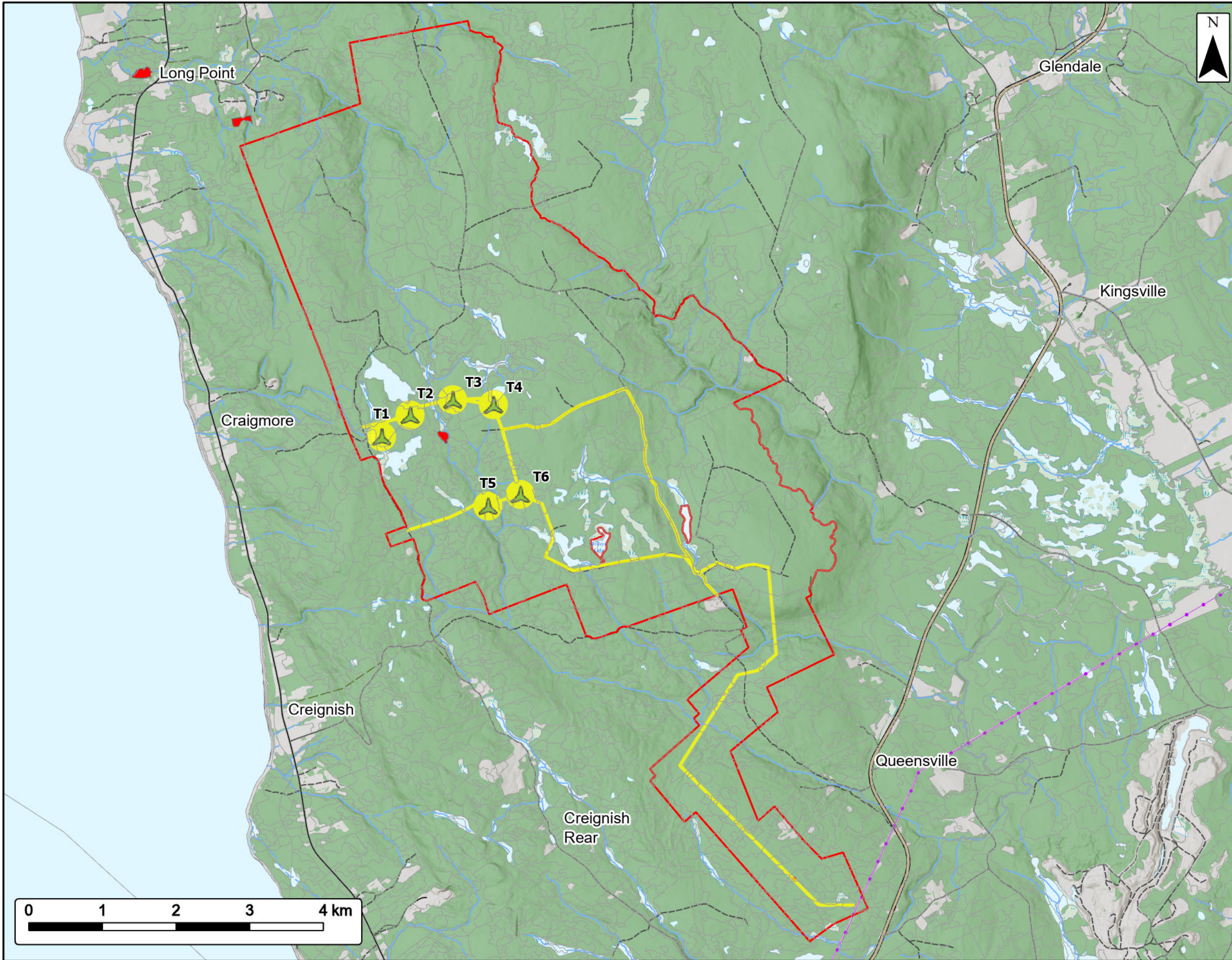
Study Area	
Assessment Area	
Softwood	
Mixedwood	
Hardwood	
Utilities (line)	
Existing Transmission Lines	
Transportation	
Trans-Canada Highway	
Road	
Unpaved Road	
Water Features	
Mapped Stream	
Mapped Indefinite Stream	
Mapped Lakes and Rivers	
Mapped Wet Areas	



Date: Oct 2024		Project #: 24-9952	
Scale: 1:50,000		Drawing #: 7.17	
Drawn By: K. Wallace			
Checked By: H. Mosher			



Coordinate System: NAD83 UTM Zone 20N Sources: ESRI Basemaps, GeoNOVA, SNSIS, NSNRR, ACCDC, IBA Canada, CNWI, HERE, Garmin, USGS



Rhodena Wind Farm
Old Growth Desktop Review

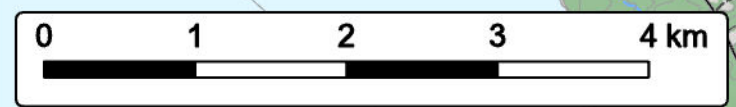


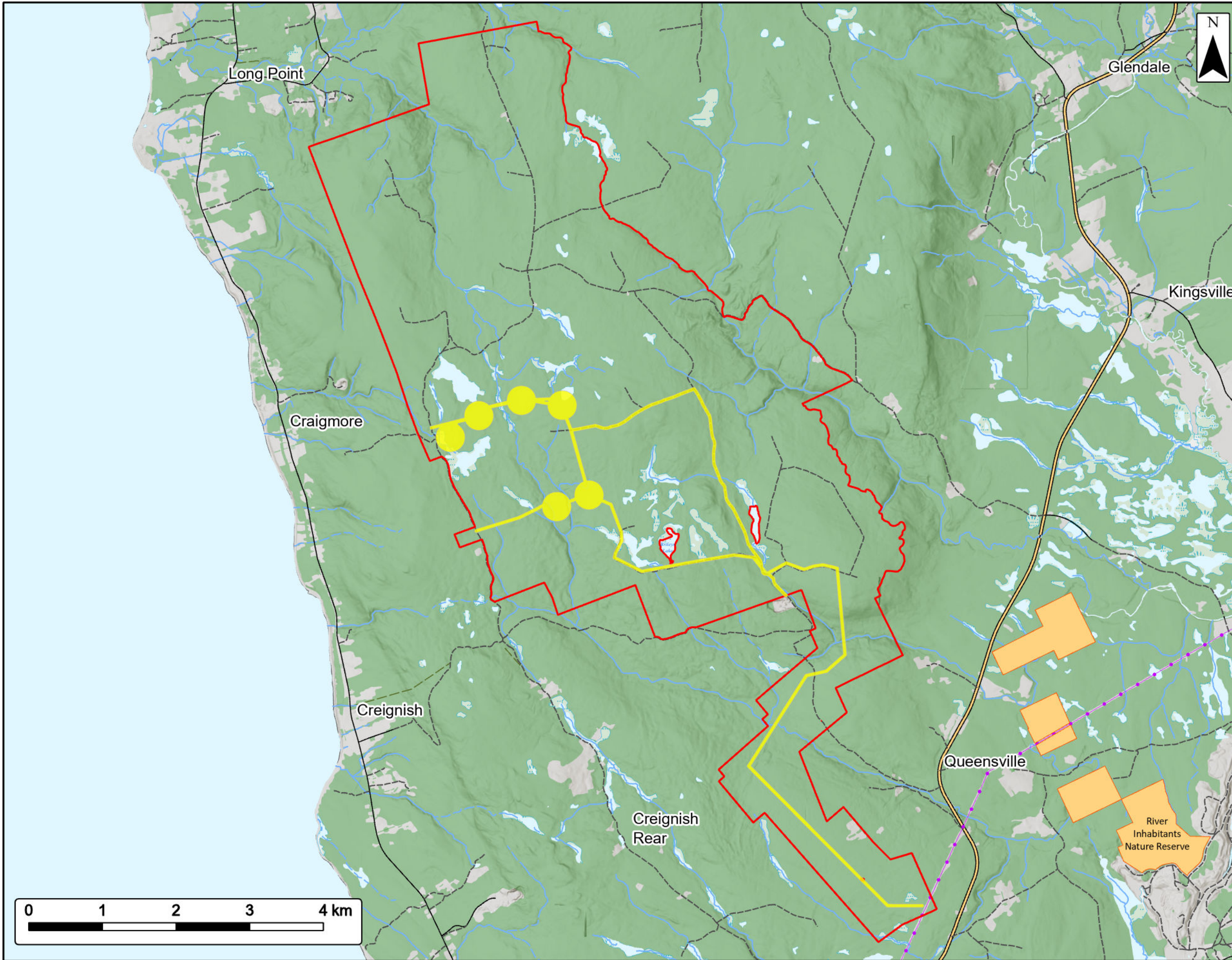
Study Area	
Assessment Area	
Proposed Turbine Location	
Old Growth	
Forest Stands	
Utilities (line)	
Existing Transmission Lines	
Transportation	
Trans-Canada Highway	
Road	
Unpaved Road	
Water Features	
Mapped Stream	
Mapped Indefinite Stream	
Mapped Lakes and Rivers	
Mapped Wet Areas	



Coordinate System: NAD83 UTM Zone 20N Sources: ESRI Basemaps, GeoNOVA, SNSIS, NSNRR, ACCDC, IBA Canada, CNWI, HERE, Garmin, USGS

Date:	Oct 2024	Project #:	24-9952
Scale:	1:50,000	Drawing #:	7.18
Drawn By:	K. Wallace		
Checked By:	H. Mosher		





Rhodena Wind Farm
NS Parks and Protected Areas

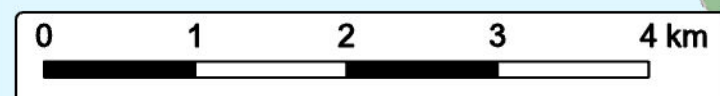


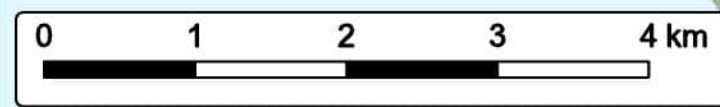
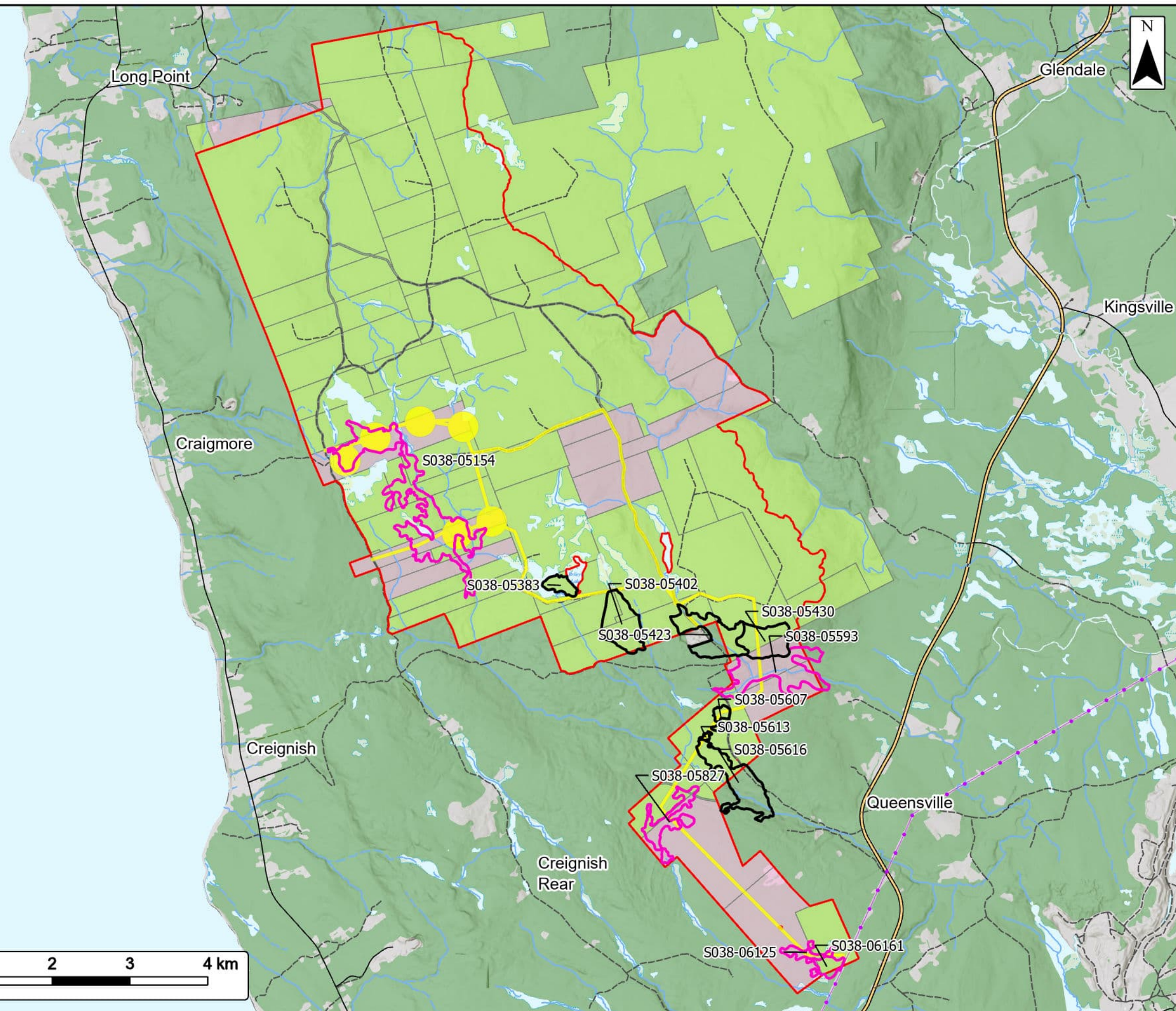
Study Area	
Assessment Area	
Type of Existing Protection	
Nature Reserve	
Utilities (line)	
Existing Transmission Lines	
Transportation	
Trans-Canada Highway	
Road	
Unpaved Road	
Water Features	
Mapped Stream	
Mapped Indefinite Stream	
Mapped Lakes and Rivers	
Mapped Wet Areas	



Coordinate System: NAD83 UTM Zone 20N Sources: ESRI Basemaps, GeoNOVA, SNSIS, NSNRR, ACCDC, IBA Canada, CNWI, HERE, Garmin, USGS

Date:	Oct 2024	Project #:	24-9952
Scale:	1:50,000	Drawing #:	7.19
Drawn By:	K. Wallace		
Checked By:	H. Mosher		





Rhodena Wind Farm
Habitat Field Results



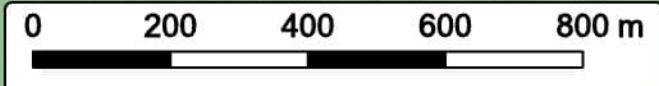
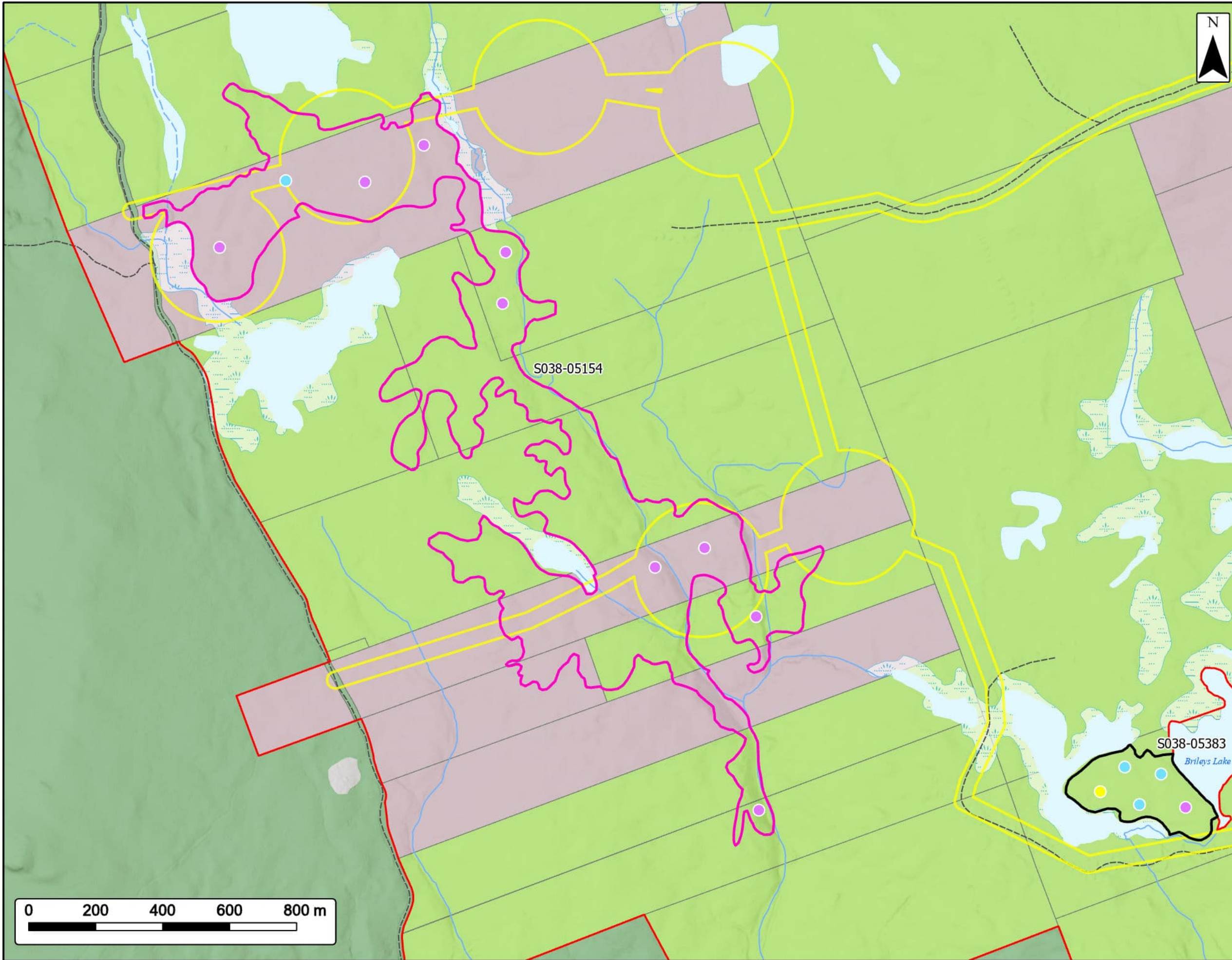
- Study Area
- Assessment Area
- Field Confirmed Old Growth
- Field Confirmed Not Old Growth
- Crown
- Private
- Utilities (line)**
- Existing Transmission Lines
- Transportation**
- Trans-Canada Highway
- Road
- Unpaved Road
- Water Features**
- Mapped Stream
- Mapped Indefinite Stream
- Mapped Lakes and Rivers
- Mapped Wet Areas



Coordinate System: NAD83 UTM Zone 20N Sources: ESRI Basemaps, GeoNOVA, SNSIS, NSNRR, ACCDC, IBA Canada, CNWI, HERE, Garmin, USGS

Date: Oct 2024	Project #: 24-9952
Scale: 1:50,000	Drawing #: 7.20A
Drawn By: K. Wallace	7.20A
Checked By: H. Mosher	

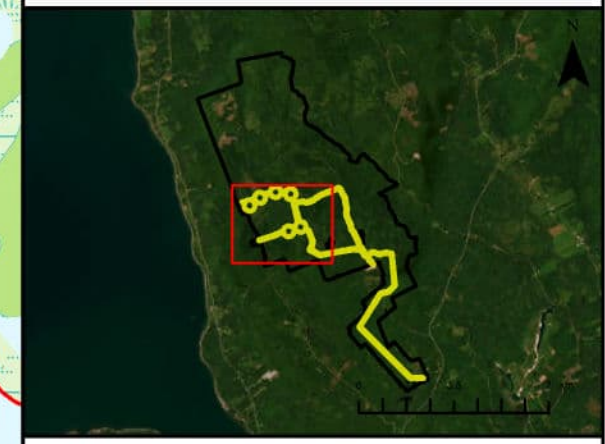




Rhodena Wind Farm
Habitat Field Results



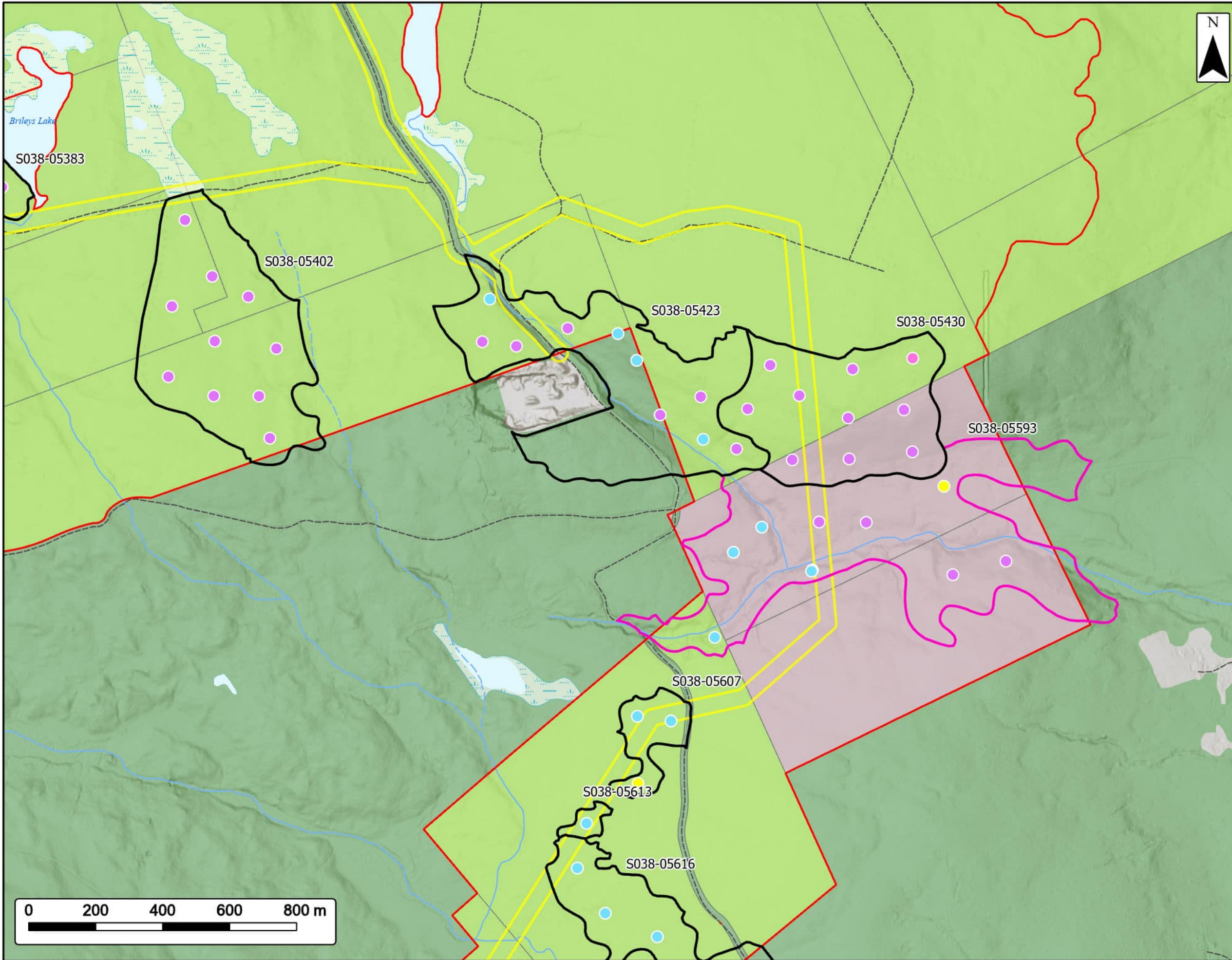
Study Area	
Assessment Area	
Habitat Pts	
Mixedwood	
Tolerant Hardwood	
Wet Mixed	
Field Confirmed Old Growth	
Field Confirmed Not Old Growth	
Transportation	
Unpaved Road	
Water Features	
Mapped Stream	
Mapped Indefinite Stream	
Mapped Lakes and Rivers	
Mapped Wet Areas	



Coordinate System: NAD83 UTM Zone 20N Sources: ESRI Basemaps, GeoNOVA, SNSIS, NSNRR, ACCDC, IBA Canada, CNWI, HERE, Garmin, USGS

Date:	Oct 2024	Project #:	24-9952
Scale:	1:11,000	Drawing #:	7.20B
Drawn By:	K. Wallace		
Checked By:	H. Mosher		





Rhodena Wind Farm

Habitat Field Results



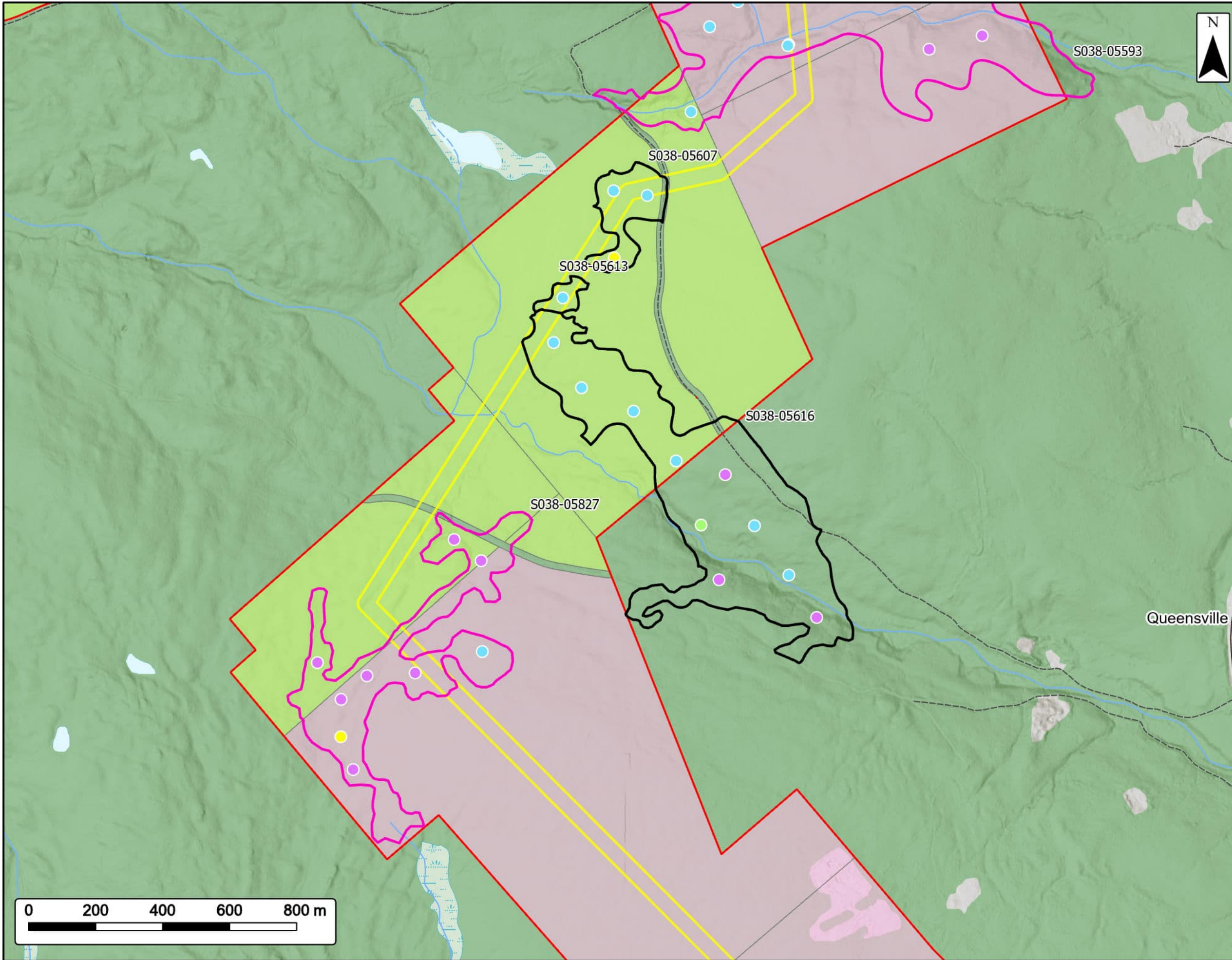
Study Area	
Assessment Area	
Habitat Pts	
Intolerant Hardwood	
Mixedwood	
Tolerant Hardwood	
Wet Mixed	
Field Confirmed Old Growth	
Field Confirmed Not Old Growth	
Transportation	
Unpaved Road	
Water Features	
Mapped Stream	
Mapped Indefinite Stream	
Mapped Lakes and Rivers	
Mapped Wet Areas	



Coordinate System: NAD83 UTM Zone 20N Sources: ESRI Basemaps, GeoNOVA, SNSIS, NSNRR, ACCDC, IBA Canada, CNWL, HERE, Garmin, USGS

Date:	Oct 2024	Project #:	24-9952
Scale:	1:11,000	Drawing #:	7.20C
Drawn By:	K. Wallace		
Checked By:	H. Mosher		



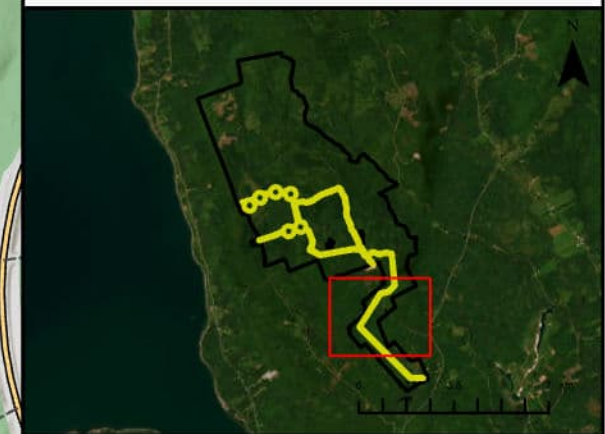


Rhodena Wind Farm

Habitat Field Results



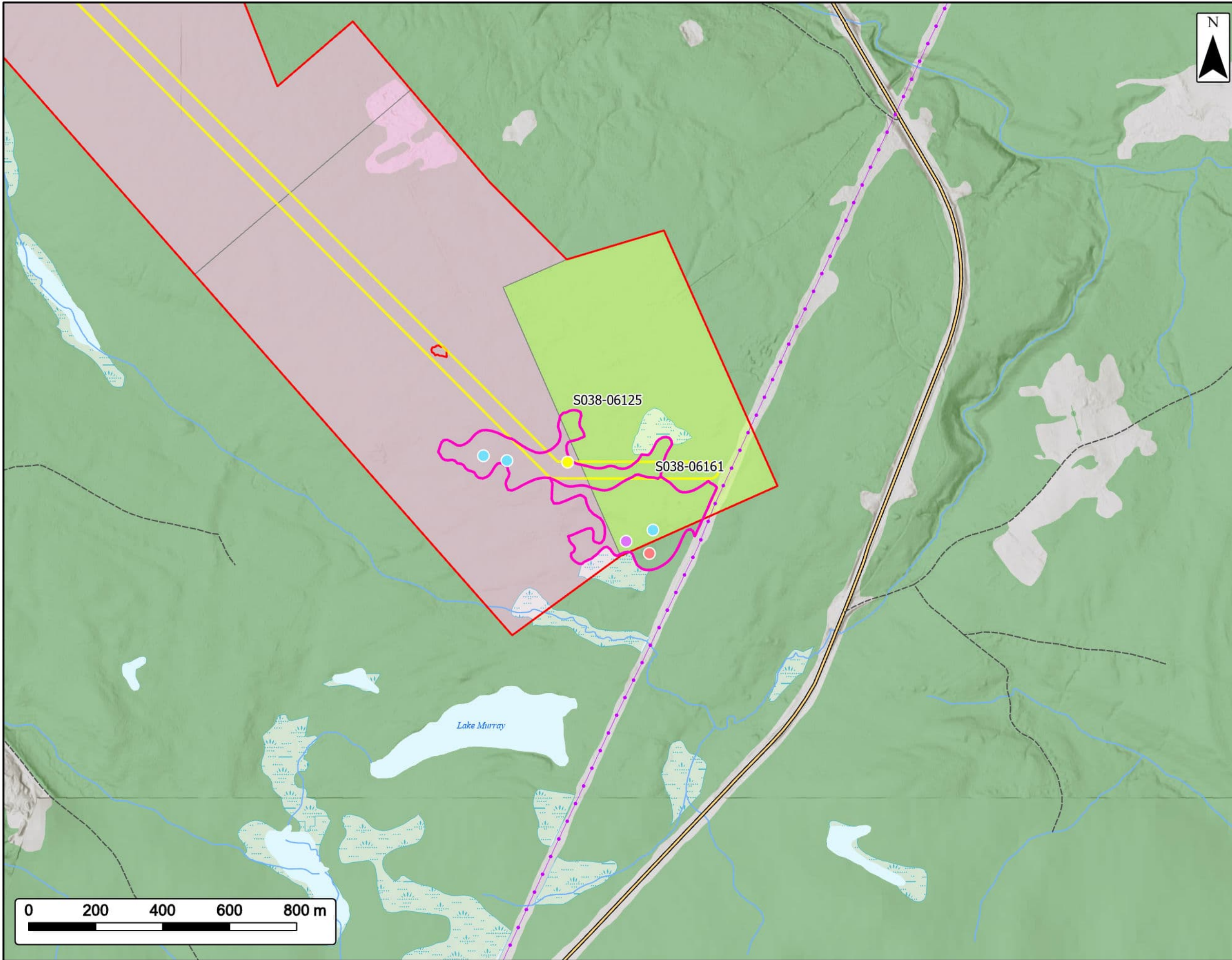
Study Area	
Assessment Area	
Habitat Pts	
Mixedwood	
Spruce Hemlock	
Tolerant Hardwood	
Wet Mixed	
Field Confirmed Old Growth	
Field Confirmed Not Old Growth	
Transportation	
Trans-Canada Highway	
Unpaved Road	
Water Features	
Mapped Stream	
Mapped Indefinite Stream	
Mapped Lakes and Rivers	
Mapped Wet Areas	



Coordinate System: NAD83 UTM Zone 20N Sources: ESRI Basemaps, GeoNOVA, SNSIS, NSNRR, ACCDC, IBA Canada, CNWI, HERE, Garmin, USGS

Date:	Oct 2024	Project #:	24-9952
Scale:	1:11,000	Drawing #:	7.20D
Drawn By:	K. Wallace		
Checked By:	H. Mosher		





Rhodena Wind Farm

Habitat Field Results

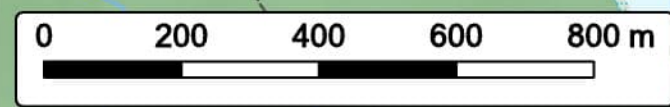


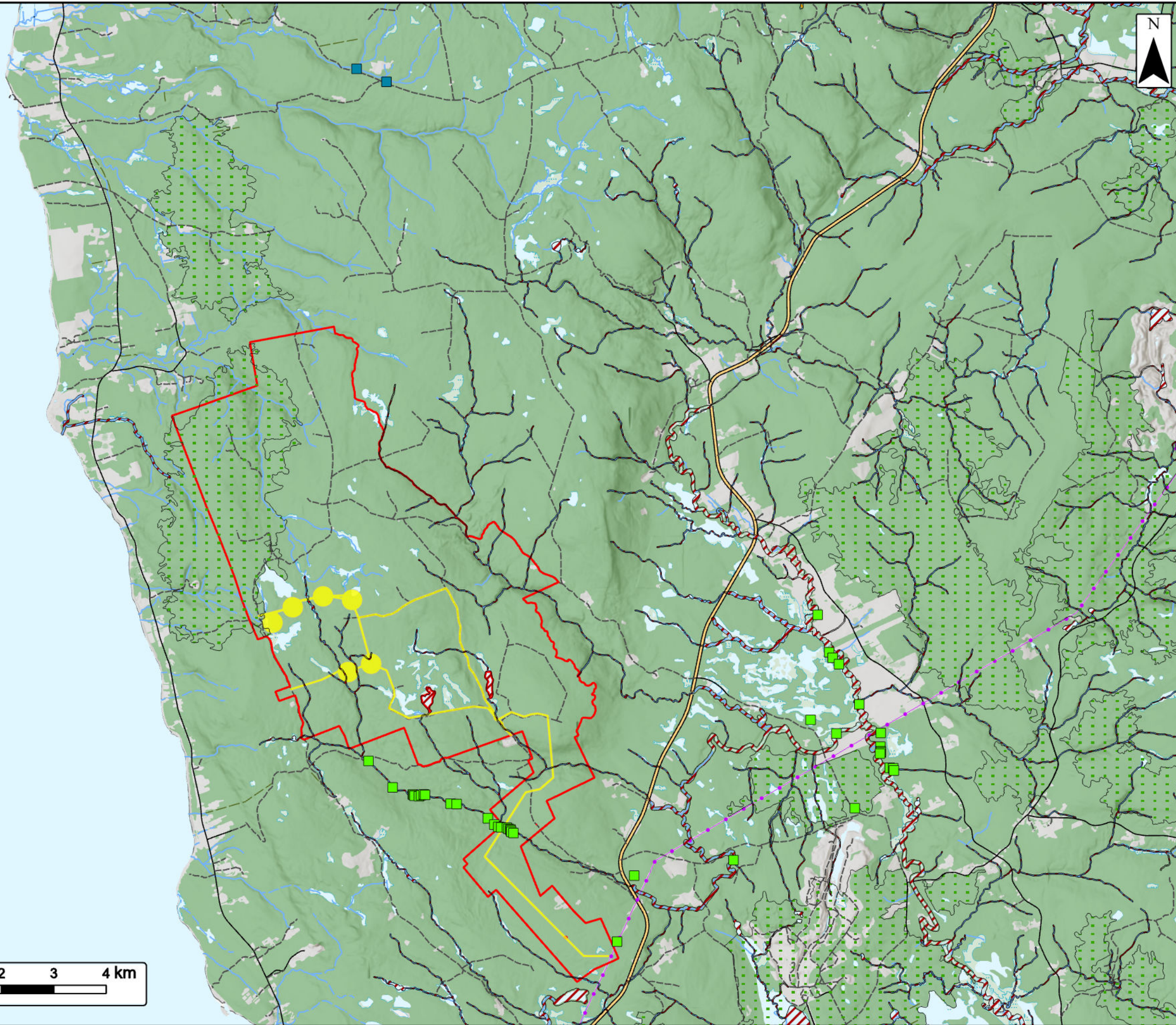
Study Area	
Assessment Area	
Habitat Pts	
Mixedwood	
Tolerant Hardwood	
Wet Deciduous	
Wet Mixed	
Field Confirmed Old Growth	
Utilities (line)	
Existing Transmission Lines	
Transportation	
Trans-Canada Highway	
Unpaved Road	
Water Features	
Mapped Stream	
Mapped Lakes and Rivers	
Mapped Wet Areas	



Coordinate System: NAD83 UTM Zone 20N Sources: ESRI Basemaps, GeoNOVA, SNSIS, NSNRR, ACCDC, IBA Canada, CNWI, HERE, Garmin, USGS

Date:	Oct 2024	Project #:	24-9952
Scale:	1:11,000	Drawing #:	7.20E
Drawn By:	K. Wallace		
Checked By:	H. Mosher		





Rhodena Wind Farm
Flora Desktop Review



- Study Area
- Assessment Area
- ACCDC Pt. Data**
- Nonvascular Flora
- Vascular Flora
- Significant Species and Habitats**
- Deer Wintering
- Other Habitat
- Species at Risk
- Utilities (line)**
- Existing Transmission Lines
- Transportation**
- Trans-Canada Highway
- Road
- Unpaved Road
- Water Features**
- Mapped Stream
- Mapped Indefinite Stream
- Mapped Lakes and Rivers
- Mapped Wet Areas



Coordinate System: NAD83 UTM Zone 20N		Sources: ESRI Basemaps, GeoNOVA, SNSIS, NSNRR, ACCDC, IBA Canada, CNWI, HERE, Garmin, USGS	
Date:	Oct 2024	Project #:	24-9952
Scale:	1:75,000	Drawing #:	7.21
Drawn By:	K. Wallace		
Checked By:	H. Mosher		

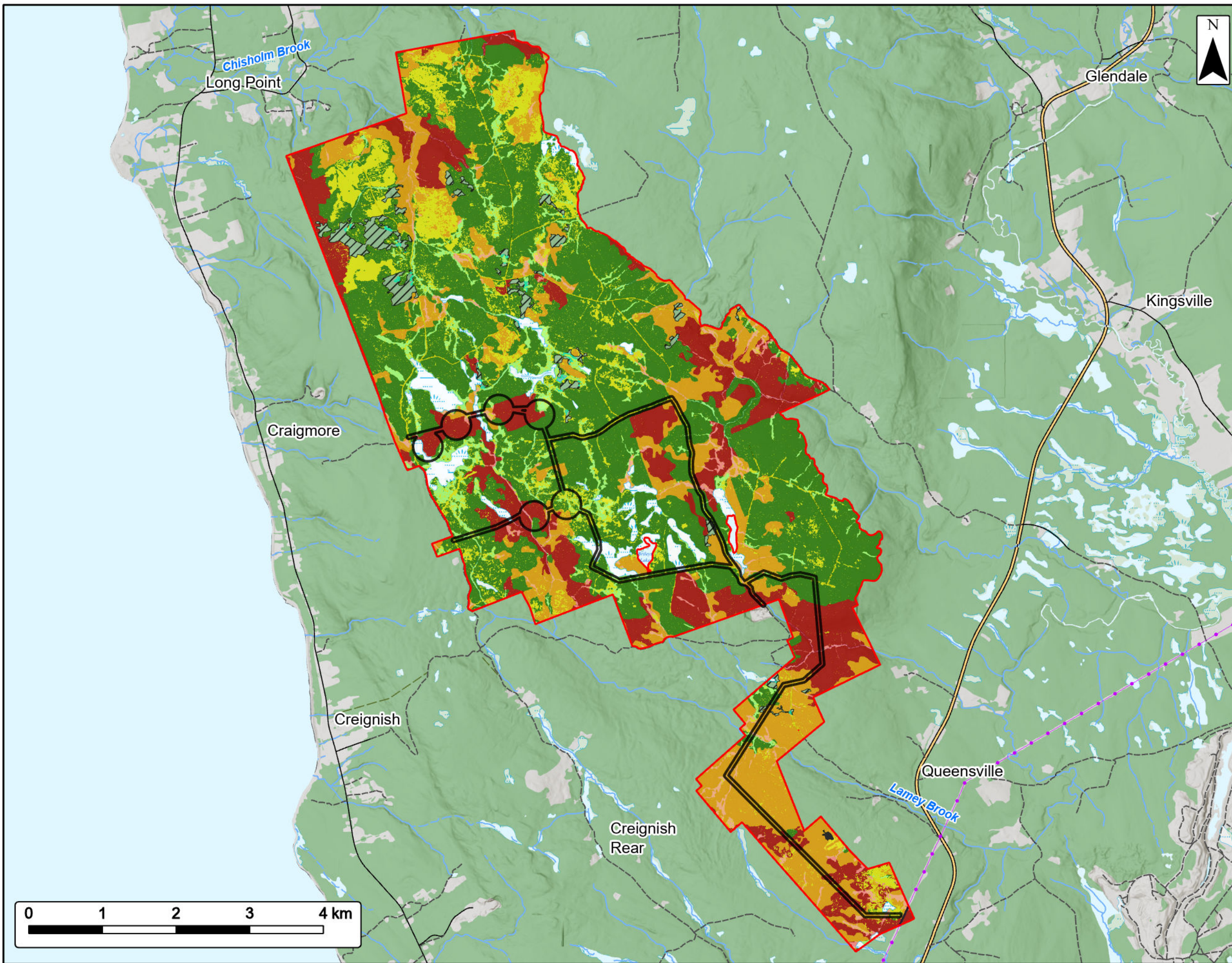


Rhodena Wind Farm

Botany Field survey Methodology



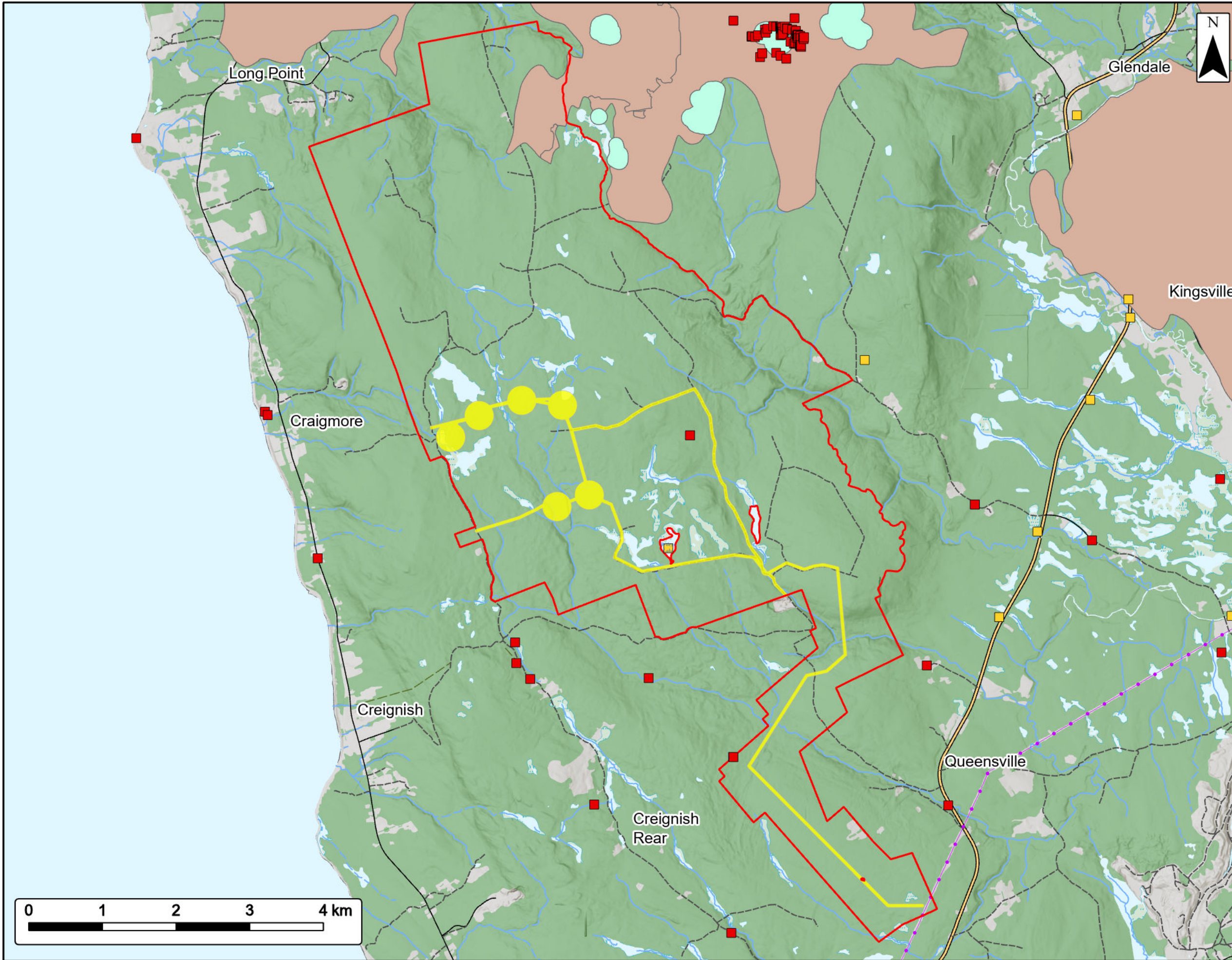
Study Area		Utilities (line)	
Assessment Area		Existing Transmission Lines	
Cutover		Transportation	
Cutover Wetland		Trans-Canada Highway	
Hardwood Forest		Road	
Hardwood Wet Forest		Unpaved Road	
Mixedwood Forest		Water Features	
Mixedwood Wet Forest		Mapped Stream	
Open Areas		Mapped Indefinite Stream	
Open Wetland		Mapped Lakes and Rivers	
Softwood Forest		Mapped Wet Areas	
Softwood Wet Forest			
Urban/ Developed			
Water			



Coordinate System: NAD83 UTM Zone 20N Sources: ESRI Basemaps, GeoNOVA, SNSIS, NSNRR, ACCDC, IBA Canada, CNWI, HERE, Garmin, USGS

Date:	Oct 2024	Project #:	24-9952
Scale:	1:50,000	Drawing #:	7.22
Drawn By:	K. Wallace		
Checked By:	H. Mosher		





Rhodena Wind Farm
Fauna Methodology

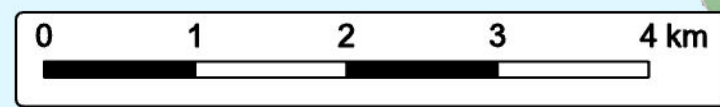


- Study Area
- Assessment Area
- Lynx Buffer
- Cape Breton Island Lynx Range
- ACDC Pt. Data**
- Vertebrate Fauna
- Invertebrate Fauna
- Utilities (line)**
- Existing Transmission Lines
- Transportation**
- Trans-Canada Highway
- Road
- Unpaved Road
- Water Features**
- Mapped Stream
- Mapped Indefinite Stream
- Mapped Lakes and Rivers
- Mapped Wet Areas



Coordinate System: NAD83 UTM Zone 20N Sources: ESRI Basemaps, GeoNOVA, SNSIS, NSNRR, ACCDC, IBA Canada, CNWI, HERE, Garmin, USGS

Date: Oct 2024	Project #: 24-9952
Scale: 1:50,000	Drawing #: 7.23
Drawn By: K. Wallace	
Checked By: H. Mosher	



Rhodena Wind Farm
Fauna Results

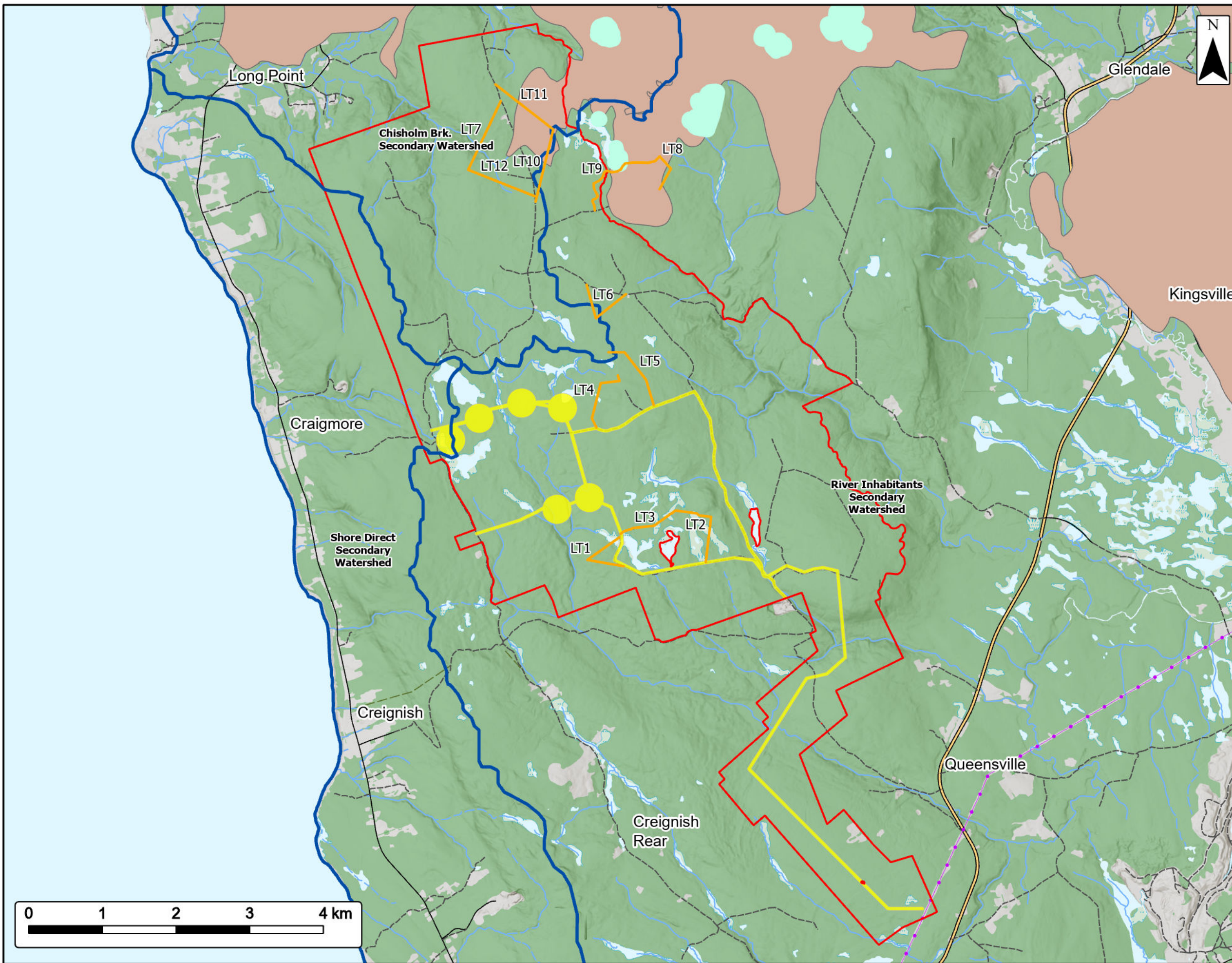


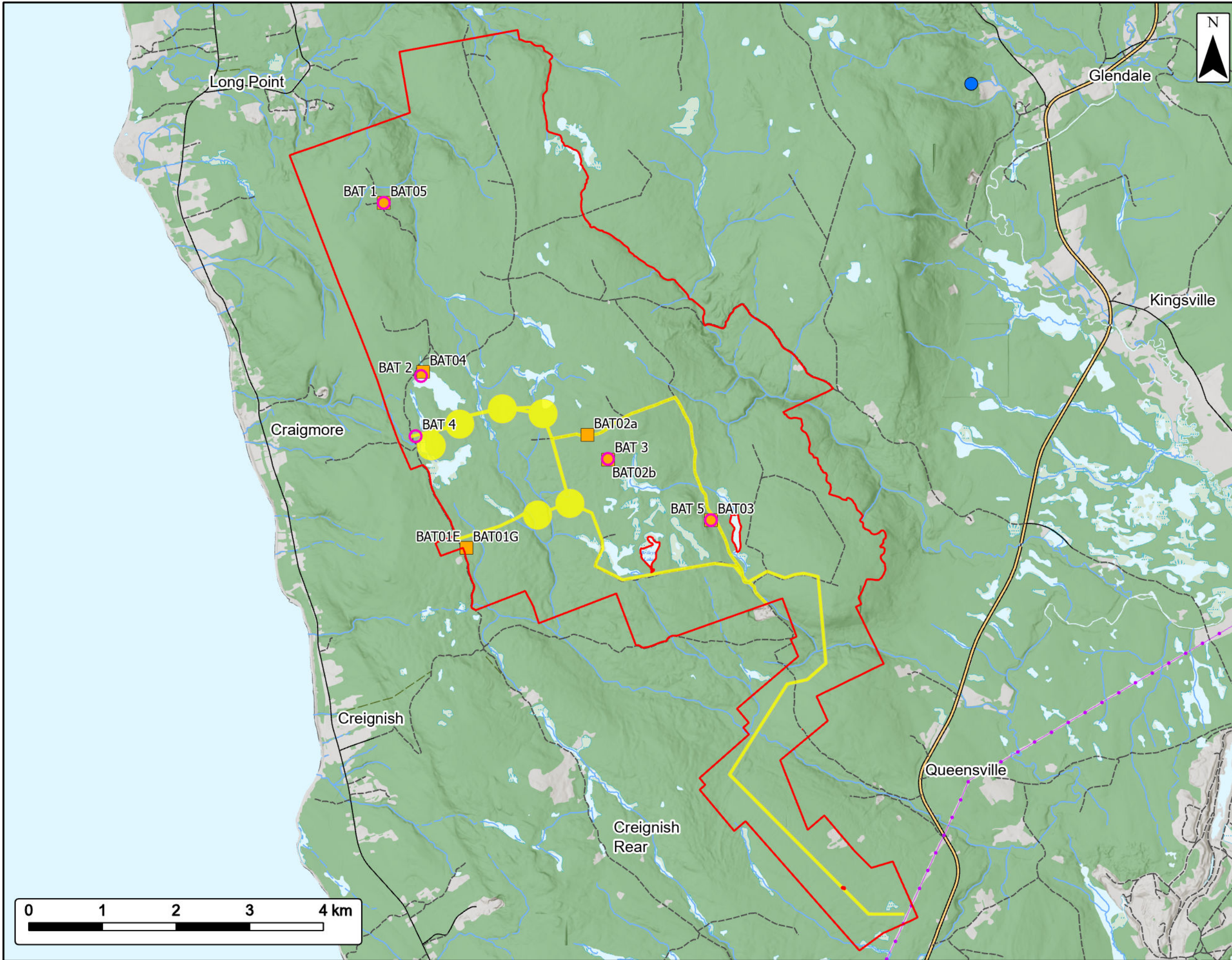
Study Area	
Assessment Area	
Secondary Watershed Boundary	
Lynx Transects	
Lynx Buffer	
Cape Breton Island Lynx Range	
Utilities (line)	
Existing Transmission Lines	
Transportation	
Trans-Canada Highway	
Road	
Unpaved Road	
Water Features	
Mapped Stream	
Mapped Indefinite Stream	
Mapped Lakes and Rivers	
Mapped Wet Areas	



Coordinate System: NAD83 UTM Zone 20N Sources: ESRI Basemaps, GeoNOVA, SNSIS, NSNRR, ACCDC, IBA Canada, CNWI, HERE, Garmin, USGS

Date:	Oct 2024	Project #:	24-9952
Scale:	1:50,000	Drawing #:	7.24
Drawn By:	K. Wallace		
Checked By:	H. Mosher		





Rhodena Wind Farm
Bat Assessment



- Study Area
- Assessment Area
- Bat Monitor Location 2022
- Bat Monitor Location 2023
- Abandoned Mine Openings
- Utilities (line)**
- Existing Transmission Lines
- Transportation**
- Trans-Canada Highway
- Road
- Unpaved Road
- Water Features**
- Mapped Stream
- Mapped Indefinite Stream
- Mapped Lakes and Rivers
- Mapped Wet Areas



Coordinate System: NAD83 UTM Zone 20N Sources: ESRI Basemaps, GeoNOVA, SNSIS, NSNRR, ACCDC, IBA Canada, CNWI, HERE, Garmin, USGS

Date:	Oct 2024	Project #:	24-9952
Scale:	1:50,000	Drawing #:	7.25
Drawn By:	K. Wallace		
Checked By:	H. Mosher		

