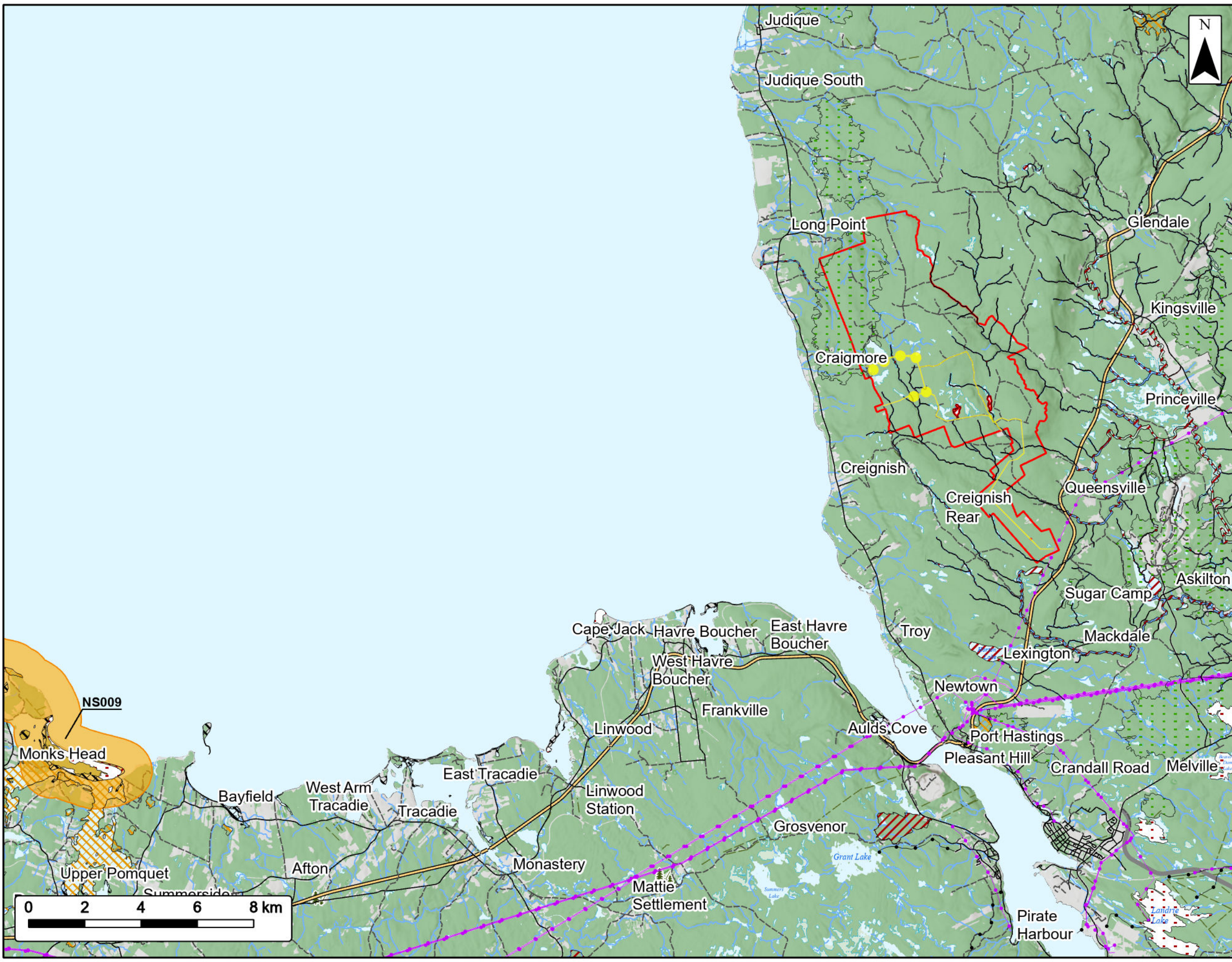


Rhodena Wind Farm

Avifauna Desktop Review



Study Area	
Assessment Area	
IBA - NS009	
Significant Species and Habitats	
Deer Wintering	
Migratory Bird	
Other Habitat	
Species at Risk	
Species of Concern	
Utilities (line)	
Existing Pipeline	
Existing Transmission Lines	
Transportation	
Trans-Canada Highway	
Highway	
Road	
Unpaved Road	
Water Features	
Mapped Stream	
Mapped Indefinite Stream	
Mapped Lakes and Rivers	
Mapped Wet Areas	

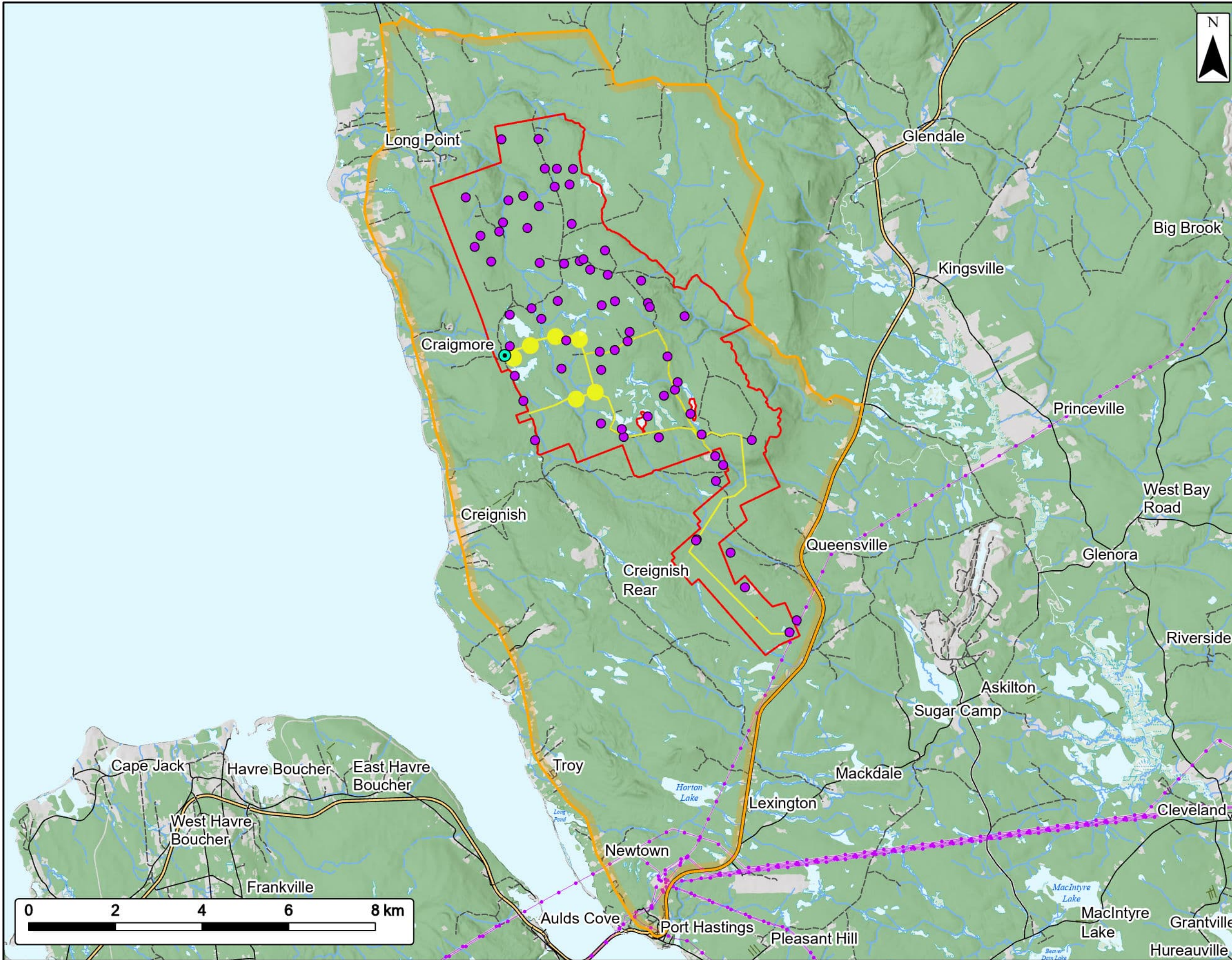


Date: Oct 2024		Project #: 24-9952	
Scale: 1:130,000		Drawing #: 7.26	
Drawn By: K. Wallace			
Checked By: H. Mosher			



Coordinate System: NAD83 UTM Zone 20N

Sources: ESRI Basemaps, GeoNOVA, SNSIS, NSNRR, ACCDC, IBA Canada, CNWI, HERE, Garmin, USGS



Rhodena Wind Farm

Avifauna Field Surveys



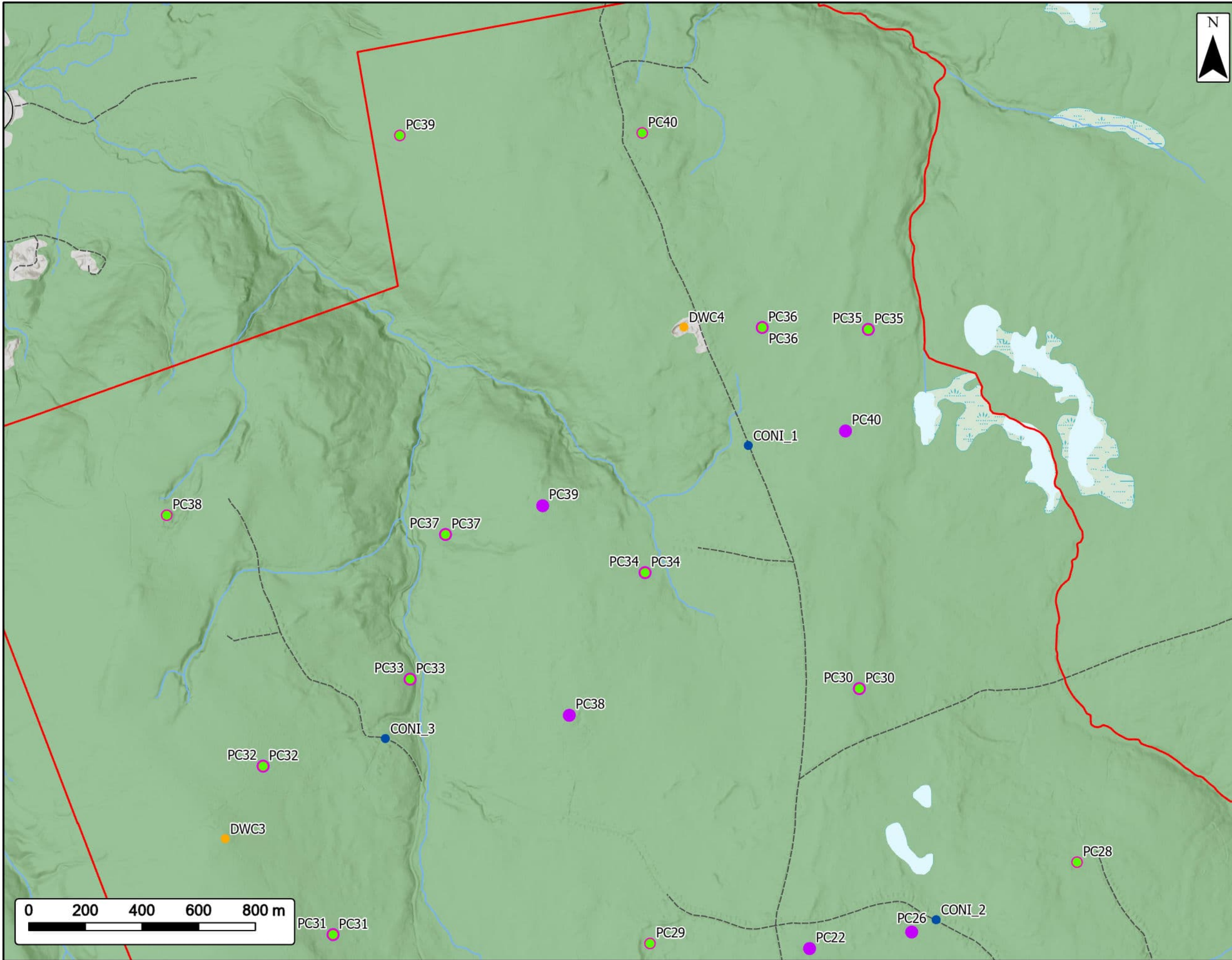
Study Area	
Assessment Area	
Regional Assessment Area	
Radar Location	
Survey Locations	
Utilities (line)	
Existing Transmission Lines	
Transportation	
Trans-Canada Highway	
Road	
Unpaved Road	
Water Features	
Mapped Stream	
Mapped Indefinite Stream	
Mapped Lakes and Rivers	
Mapped Wet Areas	



Coordinate System: NAD83 UTM Zone 20N Sources: ESRI Basemaps, GeoNOVA, SNSIS, NSNRR, ACCDC, IBA Canada, CNWI, HERE, Garmin, USGS

Date:	Oct 2024	Project #:	24-9952
Scale:	1:85,000	Drawing #:	7.27A
Drawn By:	K. Wallace		
Checked By:	H. Mosher		

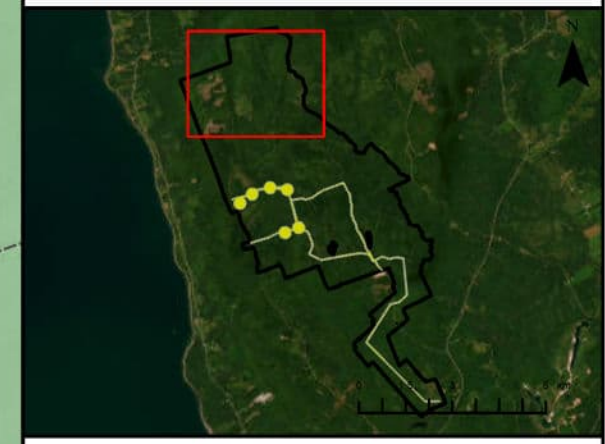




Rhodena Wind Farm
Avifauna Field Surveys



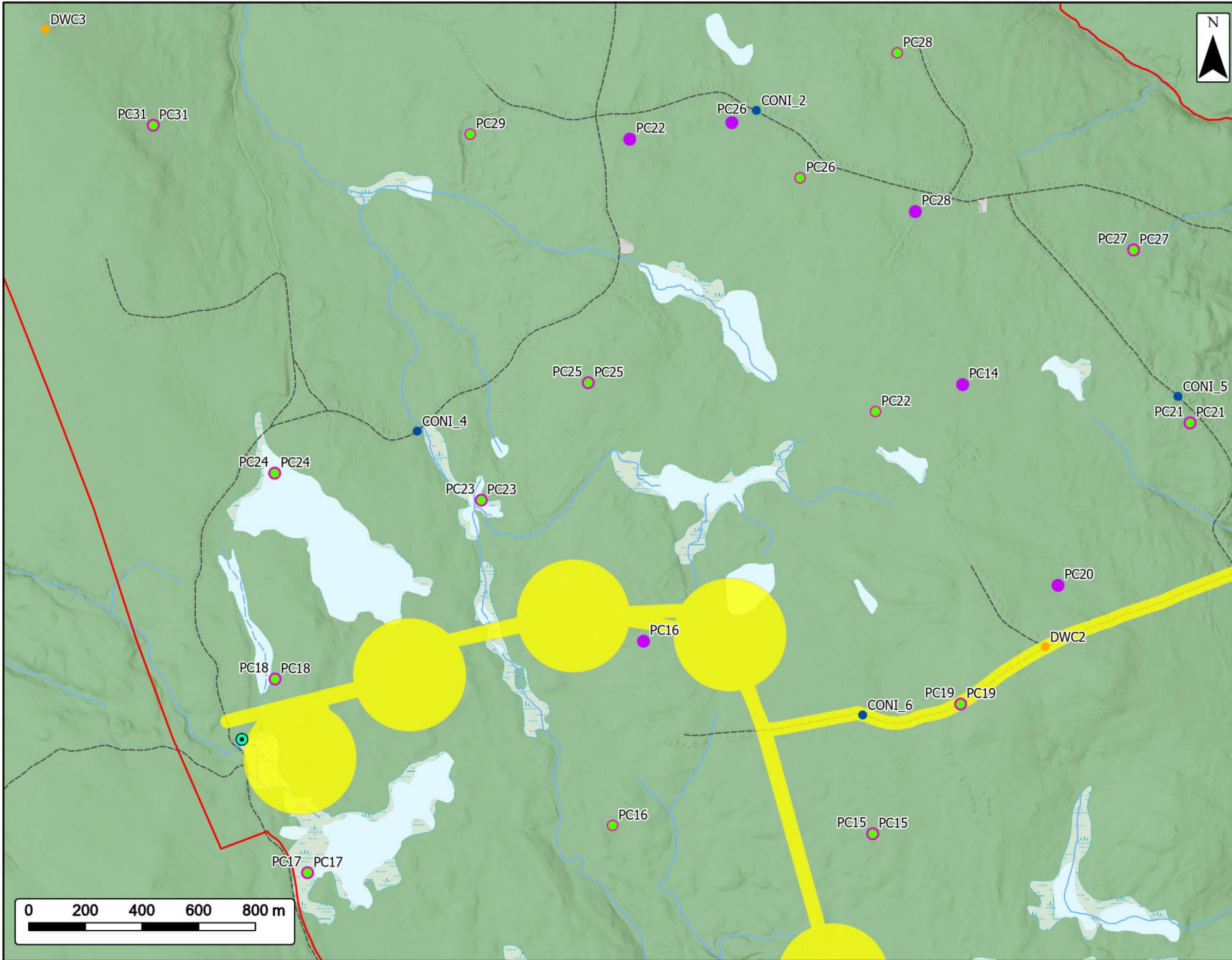
Study Area	
Regional Assessment Area	
Fall Migration PC Locations	
Spring Migration PC Locations	
DWC Locations	
CONI Locations	
Breeding PC Locations	
Transportation	
Road	
Unpaved Road	
Water Features	
Mapped Stream	
Mapped Indefinite Stream	
Mapped Lakes and Rivers	
Mapped Wet Areas	



Coordinate System: NAD83 UTM Zone 20N Sources: ESRI Basemaps, GeoNOVA, SNSIS, NSNRR, ACCDC, IBA Canada, CNWI, HERE, Garmin, USGS

Date:	Oct 2024	Project #:	24-9952
Scale:	1:13,000	Drawing #:	7.27B
Drawn By:	K. Wallace		
Checked By:	H. Mosher		

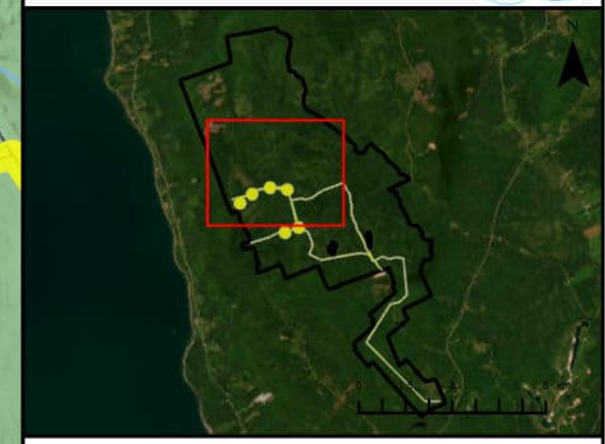




Rhodena Wind Farm
Avifauna Field Surveys



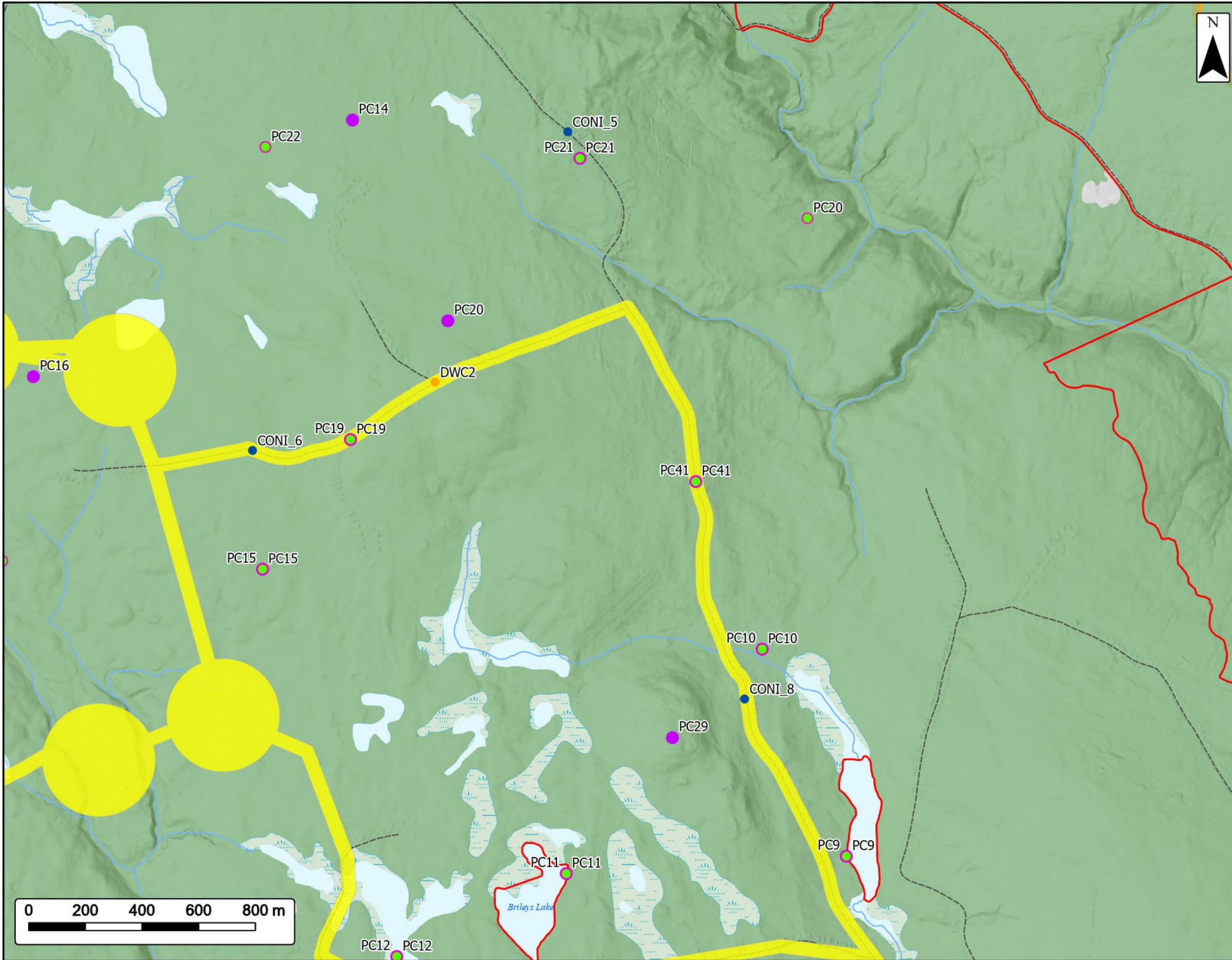
- Study Area
- Assessment Area
- Regional Assessment Area
- Radar Location
- Fall Migration PC Locations
- Spring Migration PC Locations
- DWC Locations
- CONI Locations
- Breeding PC Locations
- Transportation**
- Unpaved Road
- Water Features**
- Mapped Stream
- Mapped Indefinite Stream
- Mapped Lakes and Rivers
- Mapped Wet Areas



Coordinate System: NAD83 UTM Zone 20N Sources: ESRI Basemaps, GeoNOVA, SNSIS, NSNRR, ACCDC, IBA Canada, CNWI, HERE, Garmin, USGS

Date:	Oct 2024	Project #:	24-9952
Scale:	1:13,000	Drawing #:	7.27C
Drawn By:	K. Wallace		
Checked By:	H. Mosher		



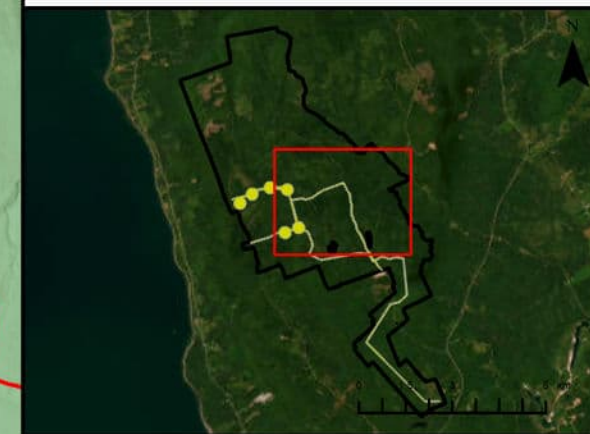


Rhodena Wind Farm

Avifauna Field Surveys



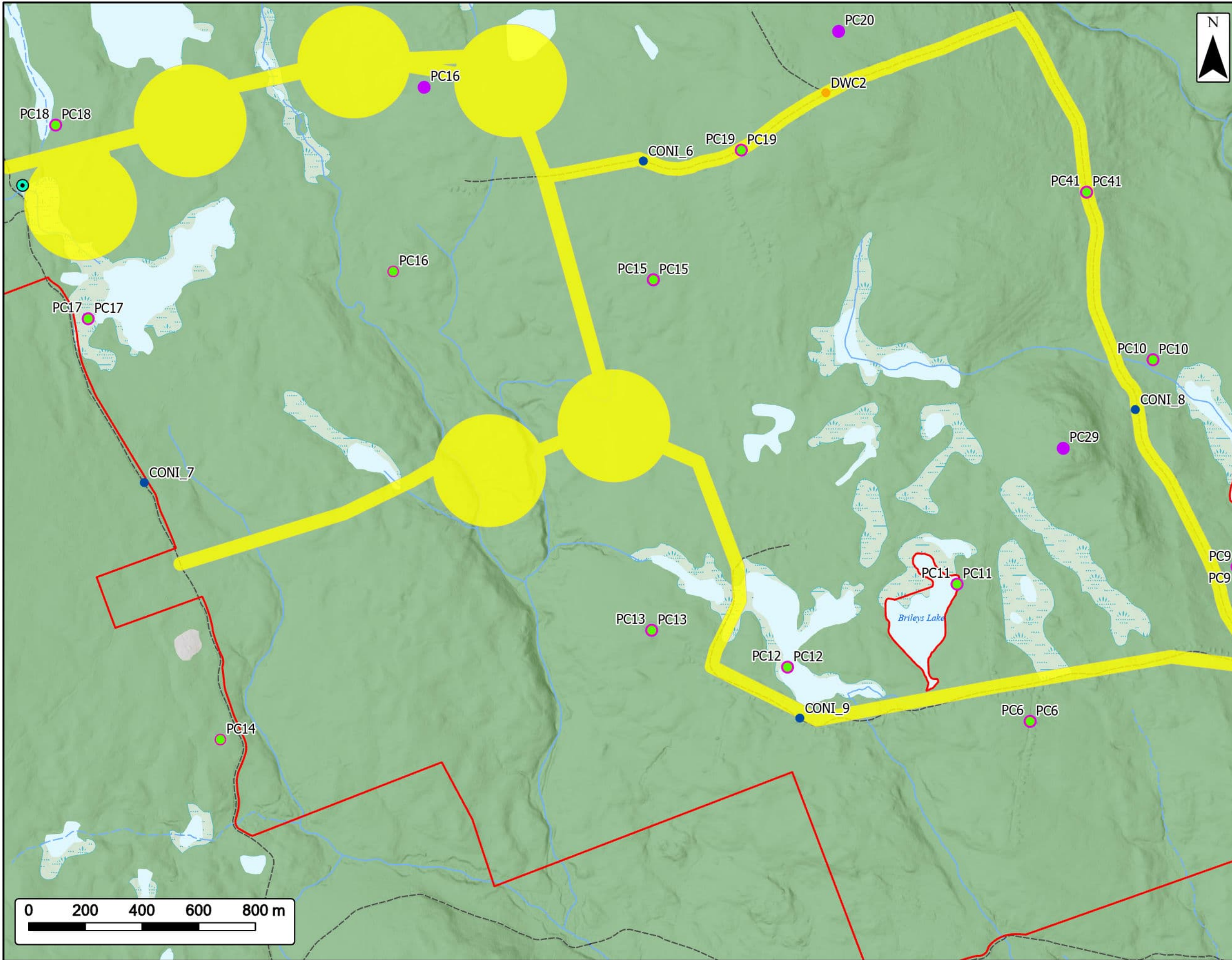
Study Area	
Assessment Area	
Regional Assessment Area	
Fall Migration PC Locations	
Spring Migration PC Locations	
DWC Locations	
CONI Locations	
Breeding PC Locations	
Transportation	
Road	
Unpaved Road	
Water Features	
Mapped Stream	
Mapped Indefinite Stream	
Mapped Lakes and Rivers	
Mapped Wet Areas	



Coordinate System: NAD83 UTM Zone 20N Sources: ESRI Basemaps, GeoNOVA, SNSIS, NSNRR, ACCDC, IBA Canada, CNWI, HERE, Garmin, USGS

Date:	Oct 2024	Project #:	24-9952
Scale:	1:13,000	Drawing #:	7.27D
Drawn By:	K. Wallace		
Checked By:	H. Mosher		





Rhodena Wind Farm
Avifauna Field Surveys



Study Area	
Assessment Area	
Regional Assessment Area	
Radar Location	
Fall Migration PC Locations	
Spring Migration PC Locations	
DWC Locations	
CONI Locations	
Breeding PC Locations	
Transportation	
Road	
Unpaved Road	
Water Features	
Mapped Stream	
Mapped Indefinite Stream	
Mapped Lakes and Rivers	



Coordinate System: NAD83 UTM Zone 20N
Sources: ESRI Basemaps, GeoNOVA, SNSIS, NSNRR, ACCDC, IBA Canada, CNWI, HERE, Garmin, USGS

Date:	Oct 2024	Project #:	24-9952
Scale:	1:13,000	Drawing #:	7.27E
Drawn By:	K. Wallace		
Checked By:	H. Mosher		

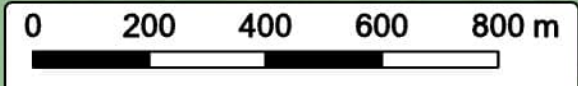
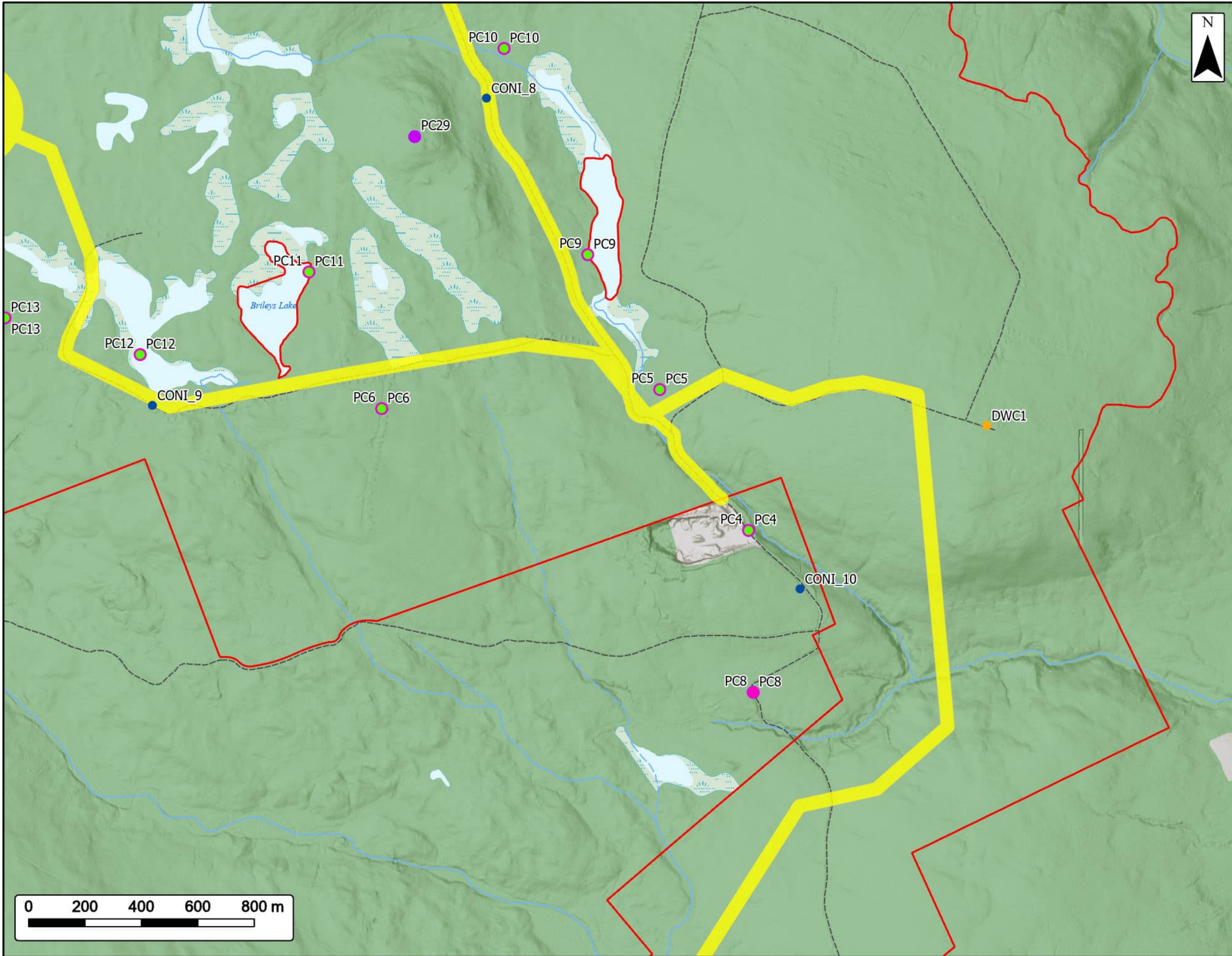


Rhodena Wind Farm

Avifauna Field Surveys



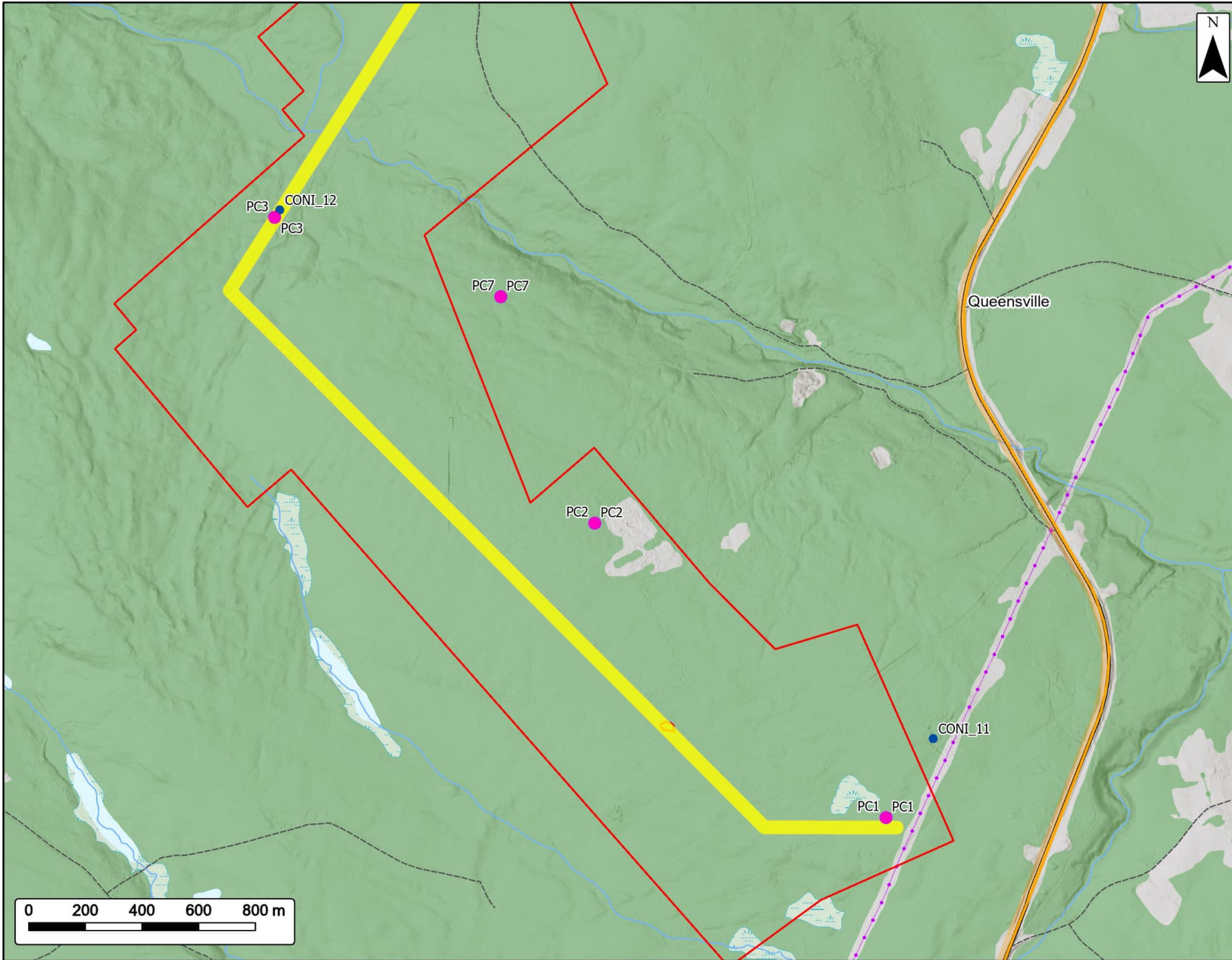
Study Area	
Assessment Area	
Regional Assessment Area	
Fall Migration PC Locations	
Spring Migration PC Locations	
DWC Locations	
CONI Locations	
Breeding PC Locations	
Transportation	
Unpaved Road	
Water Features	
Mapped Stream	
Mapped Indefinite Stream	
Mapped Lakes and Rivers	
Mapped Wet Areas	



Coordinate System: NAD83 UTM Zone 20N Sources: ESRI Basemaps, GeoNOVA, SNSIS, NSNRR, ACCDC, IBA Canada, CNWI, HERE, Garmin, USGS

Date:	Oct 2024	Project #:	24-9952
Scale:	1:13,000	Drawing #:	7.27F
Drawn By:	K. Wallace		
Checked By:	H. Mosher		

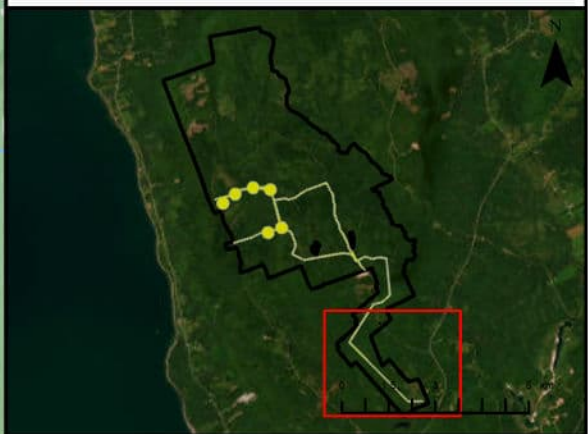




Rhodena Wind Farm
Avifauna Field Surveys

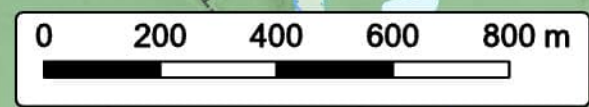


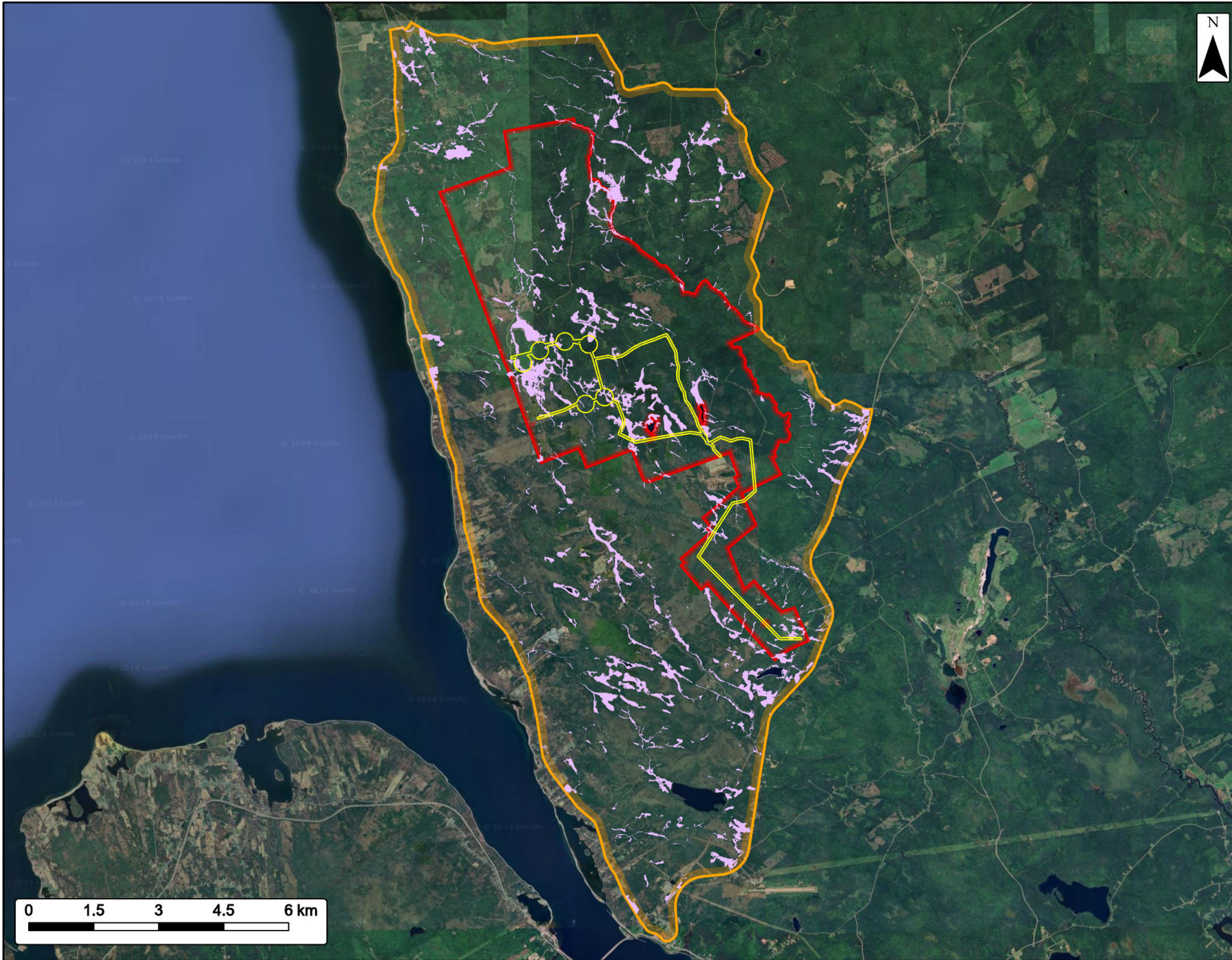
Study Area	
Assessment Area	
Regional Assessment Area	
Spring Migration PC Locations	
CONI Locations	
Breeding PC Locations	
Utilities (line)	
Existing Transmission Lines	
Transportation	
Trans-Canada Highway	
Unpaved Road	
Water Features	
Mapped Stream	
Mapped Lakes and Rivers	
Mapped Wet Areas	



Coordinate System: NAD83 UTM Zone 20N Sources: ESRI Basemaps, GeoNOVA, SNSIS, NSNRR, ACCDC, IBA Canada, CNWL, HERE, Garmin, USGS

Date:	Oct 2024	Project #:	24-9952
Scale:	1:13,000	Drawing #:	7.27G
Drawn By:	K. Wallace		
Checked By:	H. Mosher		





Rhodena Wind Farm
Canada Warbler Potential Habitat

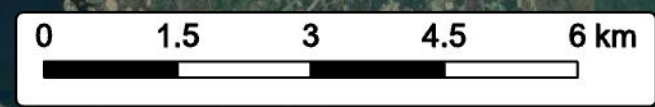


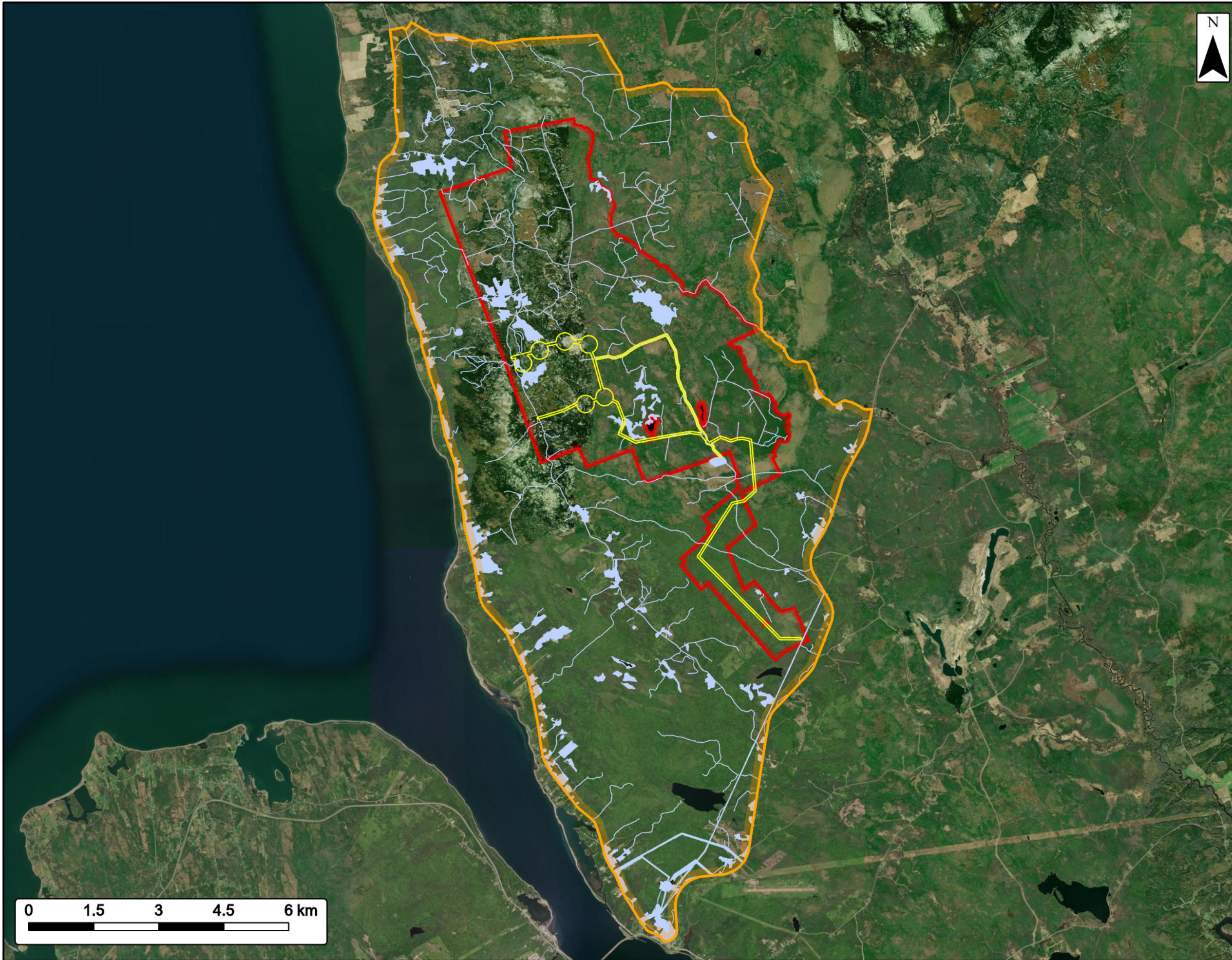
- Study Area
- Assessment Area
- Regional Assessment Area
- Potential Canada Warbler Habitat



Coordinate System: NAD83 UTM Zone 20N Sources: ESRI Basemaps, GeoNOVA, SNSIS, NSNRR, ACCDC, IBA Canada, CNWI, HERE, Garmin, USGS

Date: Oct 2024	Project #: 24-9952
Scale: 1:85,000	Drawing #: 7.28
Drawn By: P. Opra	
Checked By: H. Mosher	





Rhodena Wind Farm
Common Nighthawk Potential Habitat

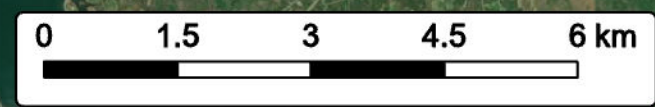


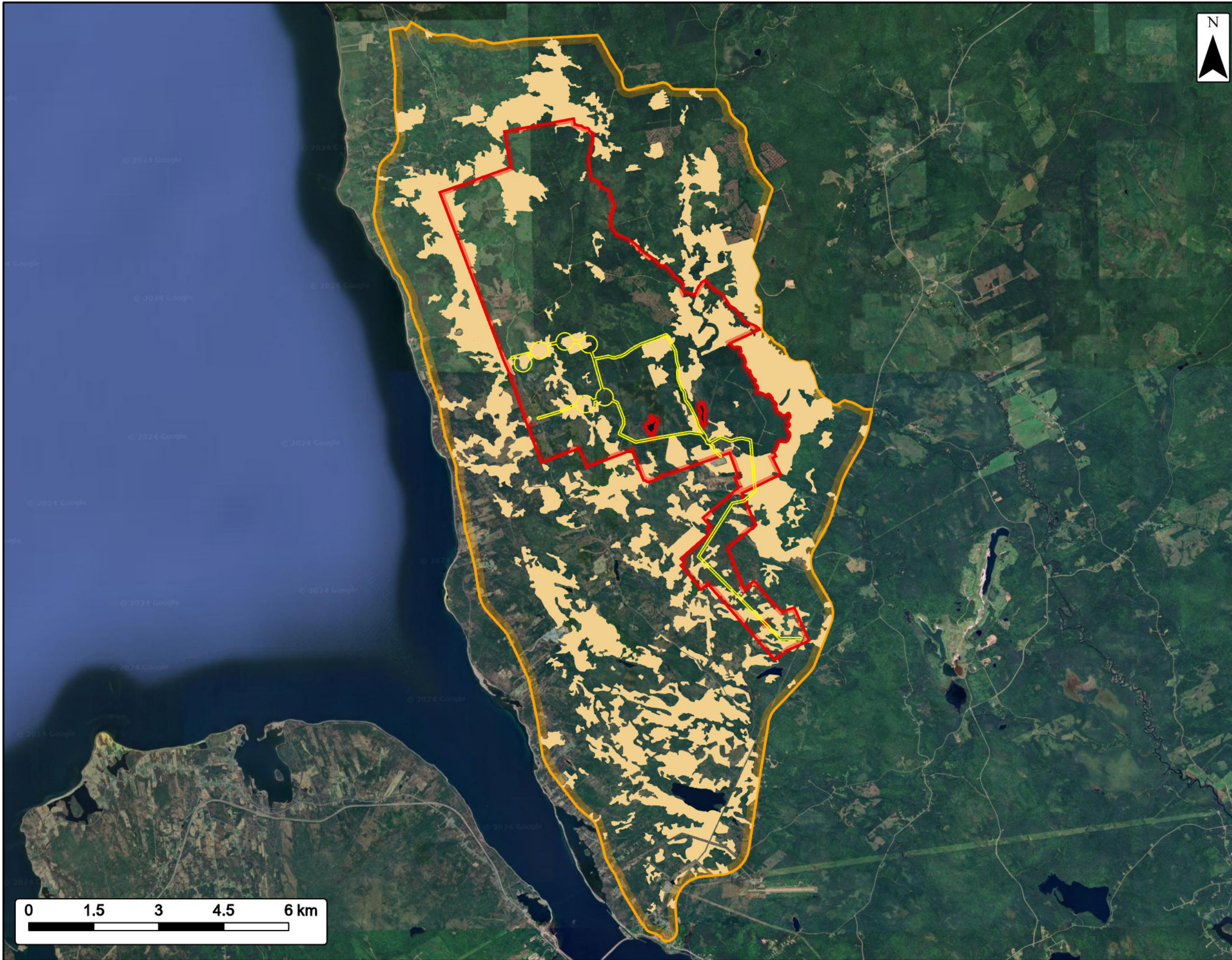
- Study Area
- Assessment Area
- Regional Assessment Area
- Potential Common Nighthawk Habitat



Coordinate System: NAD83 UTM Zone 20N Sources: ESRI Basemaps, GeoNOVA, SNSIS, NSNRR, ACCDC, IBA Canada, CNWI, HERE, Garmin, USGS

Date: Oct 2024	Project #: 24-9952
Scale: 1:85,000	Drawing #: 7.29
Drawn By: P. Opra	
Checked By: H. Mosher	





Rhodena Wind Farm
Eastern Wood Peewee Potential Habitat



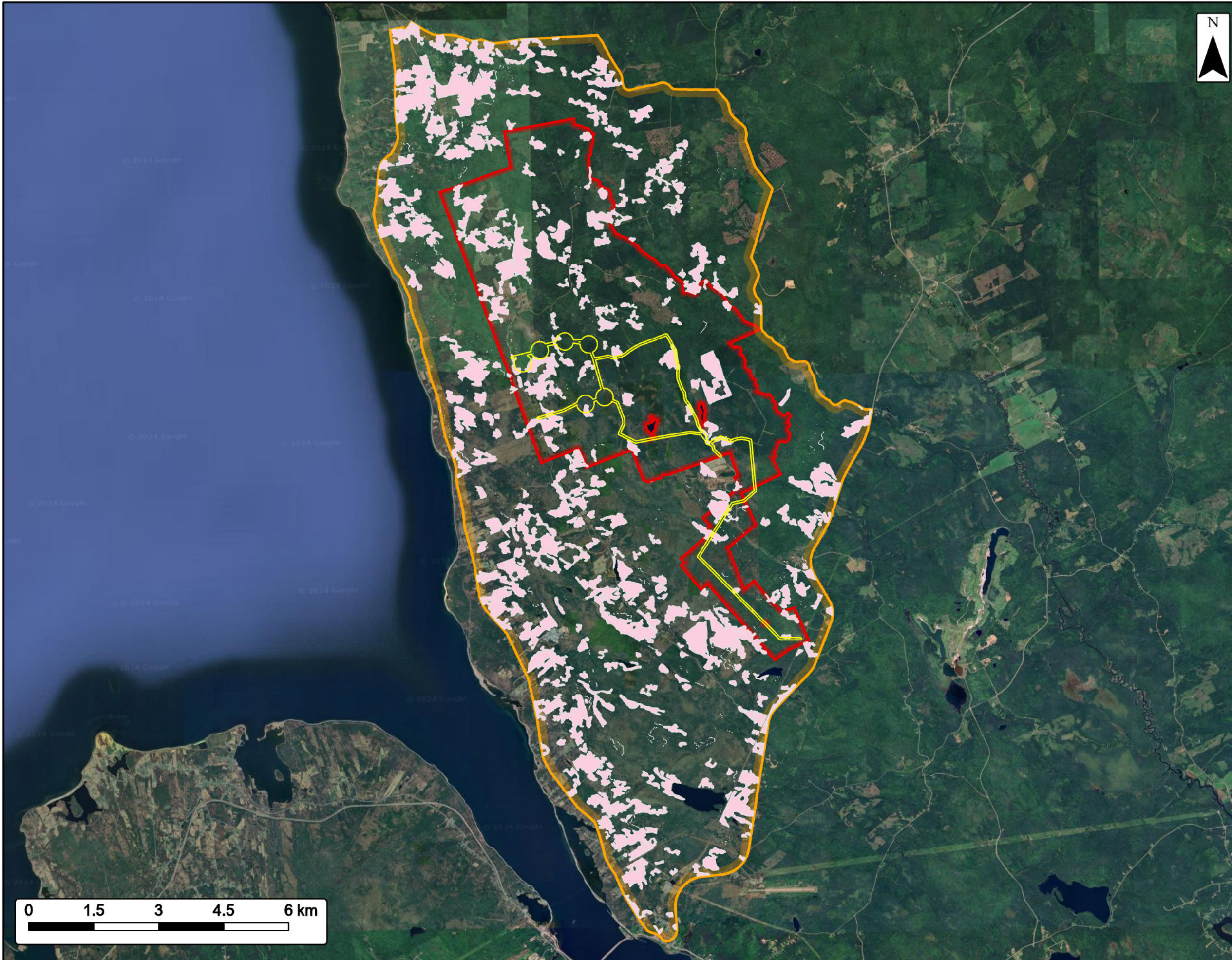
- Study Area
- Assessment Area
- Regional Assessment Area
- Potential Eastern Wood Peewee Habitat



Coordinate System: NAD83 UTM Zone 20N Sources: ESRI Basemaps, GeoNOVA, SNSIS, NSNRR, ACCDC, IBA Canada, CNWI, HERE, Garmin, USGS





Date: Oct 2024	Project #: 24-9952
Scale: 1:85,000	Drawing #:
Drawn By: P. Opra	7.30
Checked By: H. Mosher	





Rhodena Wind Farm
Evening Grosbeak Potential Habitat



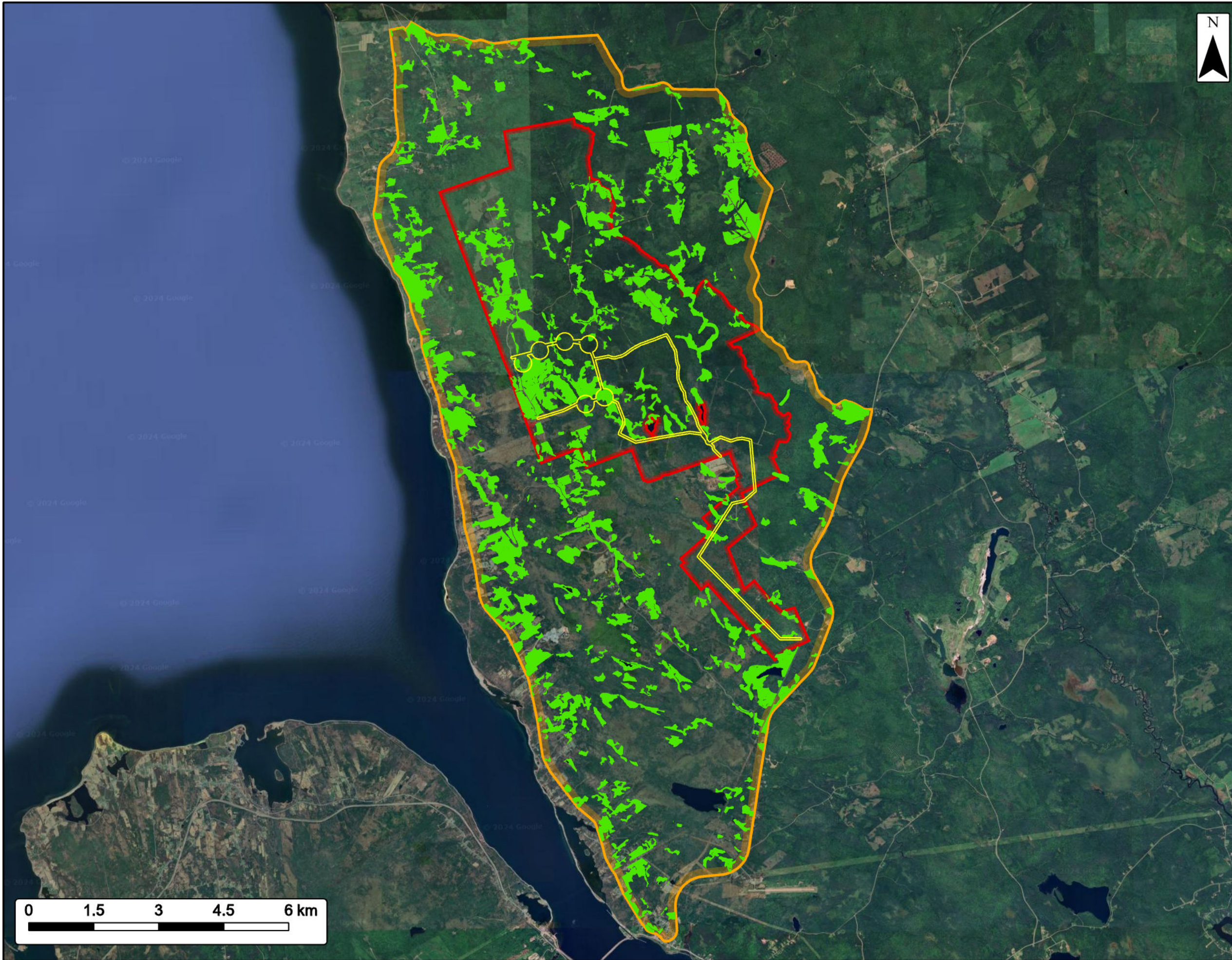
Study Area	
Assessment Area	
Regional Assessment Area	
Potential Evening Grosbeak Habitat	



Coordinate System: NAD83 UTM Zone 20N Sources: ESRI Basemaps, GeoNOVA, SNSIS, NSNRR, ACCDC, IBA Canada, CNWI, HERE, Garmin, USGS

Date:	Oct 2024	Project #:	24-9952
Scale:	1:85,000	Drawing #:	7.31
Drawn By:	P. Opra		
Checked By:	H. Mosher		





Rhodena Wind Farm
Olive-sided Flycatcher Potential Habitat



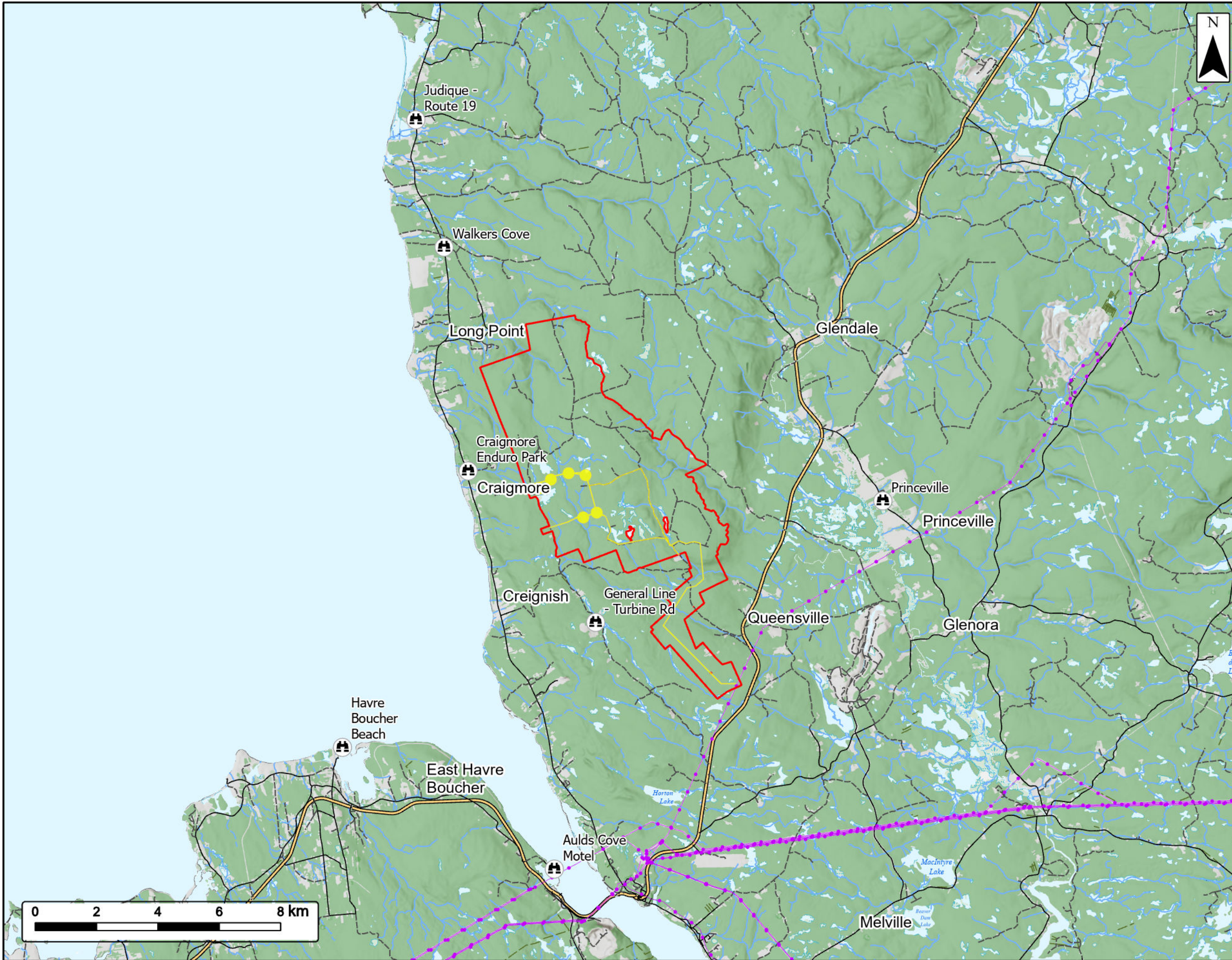
- Study Area
- Assessment Area
- Regional Assessment Area
- Potential Olive-sided Flycatcher Habitat



Coordinate System: NAD83 UTM Zone 20N Sources: ESRI Basemaps, GeoNOVA, SNSIS, NSNRR, ACCDC, IBA Canada, CNWI, HERE, Garmin, USGS

Date: Oct 2024	Project #: 24-9952
Scale: 1:85,000	Drawing #: 7.32
Drawn By: P. Opra	
Checked By: H. Mosher	





Rhodena Wind Farm
Visual Simulation Locations

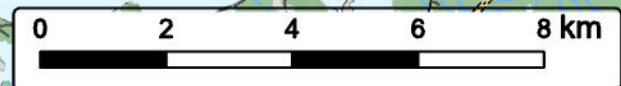


Study Area	
Assessment Area	
Visual Simulation Locations	
Utilities (line)	
Existing Transmission Lines	
Transportation	
Trans-Canada Highway	
Road	
Unpaved Road	
Water Features	
Mapped Stream	
Mapped Indefinite Stream	
Mapped Lakes and Rivers	
Mapped Wet Areas	



Coordinate System: NAD83 UTM Zone 20N Sources: ESRI Basemaps, GeoNOVA, SNSIS, NSNRR, ACCDC, IBA Canada, CNWI, HERE, Garmin, USGS

Date:	Oct 2024	Project #:	24-9952
Scale:	1:120,000	Drawing #:	10.1A
Drawn By:	K. Wallace		
Checked By:	H. Mosher		



VISUAL SIMULATION



UNRENDERED PHOTO

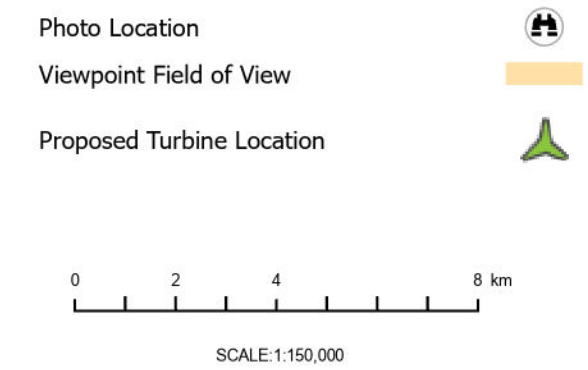
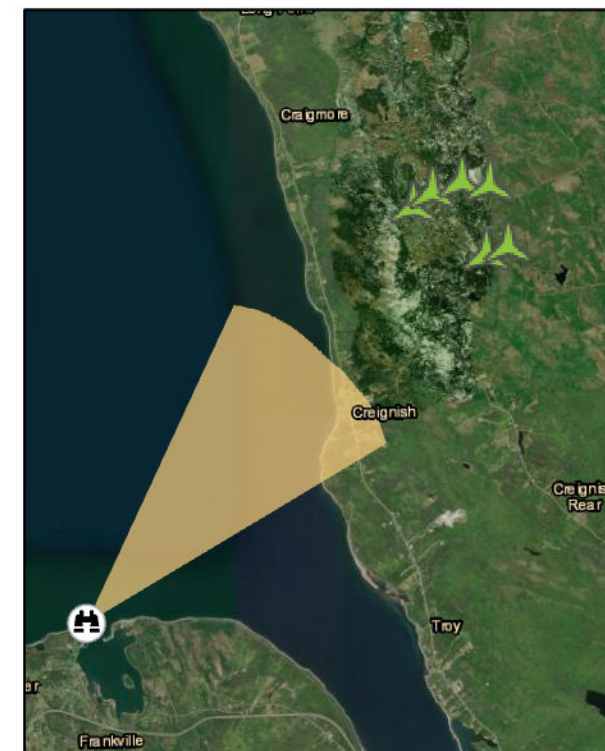


RHODENA WIND PROJECT



TECHNICAL INFORMATION

Visual Simulation Location:	Havre Boucher Beach
View Coordinates:	Latitude: 45.6928°N Longitude: 61.5267°W Easting: 616606.0m Northing: 5147765.0m
Distance to Nearest Turbine:	10.85km
Direction of View:	Northeast, 36°
Camera Make/ Model:	Canon EOS REBEL T7
Lens:	50 mm
Image Resolution:	6000 x 4000
Weather Conditions:	Overcast
Date of Photo:	2024/09/08
Time of Photo:	14:03
Photo Credit:	Strum Consulting



References

1. Data Sources: GeoNB, Client
2. Basemaps: Esri, DigitalGlobe, GeoEye, Earthstar Geographics, CNES/Airbus DS, USDA, USGS, AeroGRID, IGN, and the GIS User Community
3. Projection: NAD83 UTM Zone 19

Date: October 29, 2024	Project #: 24-9952
Drawn By: E. Johnson	Drawing #: 10.1B
Checked By: H. Mosher	

