



**Spence Aggregates Quarry
Expansion Project – Plain Language
Summary**

May 13, 2025

Prepared for:
Spence Aggregates Limited

Prepared by:
Stantec Consulting Ltd.

Project Number:
121418141

Project Summary

The Spence Aggregates Quarry Expansion Project aims to increase the size of the existing quarry, near Newport Station in Hants County from 4 hectares to 63 hectares to extend the quarry's operating life. The project could start within a year of approval and will continue for at least 30 years. The location of the Project is shown on the attached figure.

The quarry's production rate will remain the same, and it will operate year-round as it currently does under its Industrial Approval (IA) issued in 2017. The project will involve activities such as clearing land, blasting rock, crushing and storing materials, and transporting the rock, gravel, and sand.

Benefits

The expansion ensures long-term production of rock, gravel and sand in the area and benefits the community by creating direct and indirect job opportunities for workers, suppliers, and customers. It also supports local contractors and construction operations.

Environmental Effects and Mitigation

Air Quality, Dust and Noise

Effects: The quarry expansion could produce dust and emissions from trucks and equipment. Noise from blasting and machinery could be produced.

Mitigation: Equipment will be kept in good condition to reduce emissions. Dust will be controlled by watering roads. Blasting will happen during the day and comply with an approved Blast Plan.

Groundwater

Effects: The quarry expansion could change groundwater quantity and quality.

Mitigation: Groundwater will be monitored for quantity and quality. The Industrial Approval under which the quarry currently operates includes conditions and mitigation measures to protect groundwater.

Surface Water and Aquatic Life

Effects: The quarry expansion could change patterns and quantity of water runoff. Erosion and sedimentation could affect water quality and fish habitat, though the quarry expansion has been designed to avoid these effects as is it approximately 300m from the closest fish-bearing watercourse.

Mitigation: Water quality will be monitored, and stormwater runoff will be managed. Erosion and sediment control measures will be in place and buffers will be maintained around streams. A minimum 30 m buffer around watercourses will be maintained (approximately 300m from the closest fish-bearing watercourse).



Vegetation and Wetlands

Effects: The quarry expansion will include vegetation clearing and wetlands within the project area could be disturbed.

Mitigation: Wetland disturbances will be avoided if possible and a wetland alteration approval will be obtained for any wetlands that will be disturbed including habitat compensation.

Wildlife and Habitat

Effects: The quarry expansion could alter and reduce habitat.

Mitigation: Clearing will be scheduled outside of breeding seasons, when feasible. Project vehicles will adhere to posted speed limits to reduce the potential vehicle collisions with wildlife.

Heritage Resources

Effects: The quarry expansion could disturb archaeological and heritage resources, though none have been identified in the proposed expansion area.

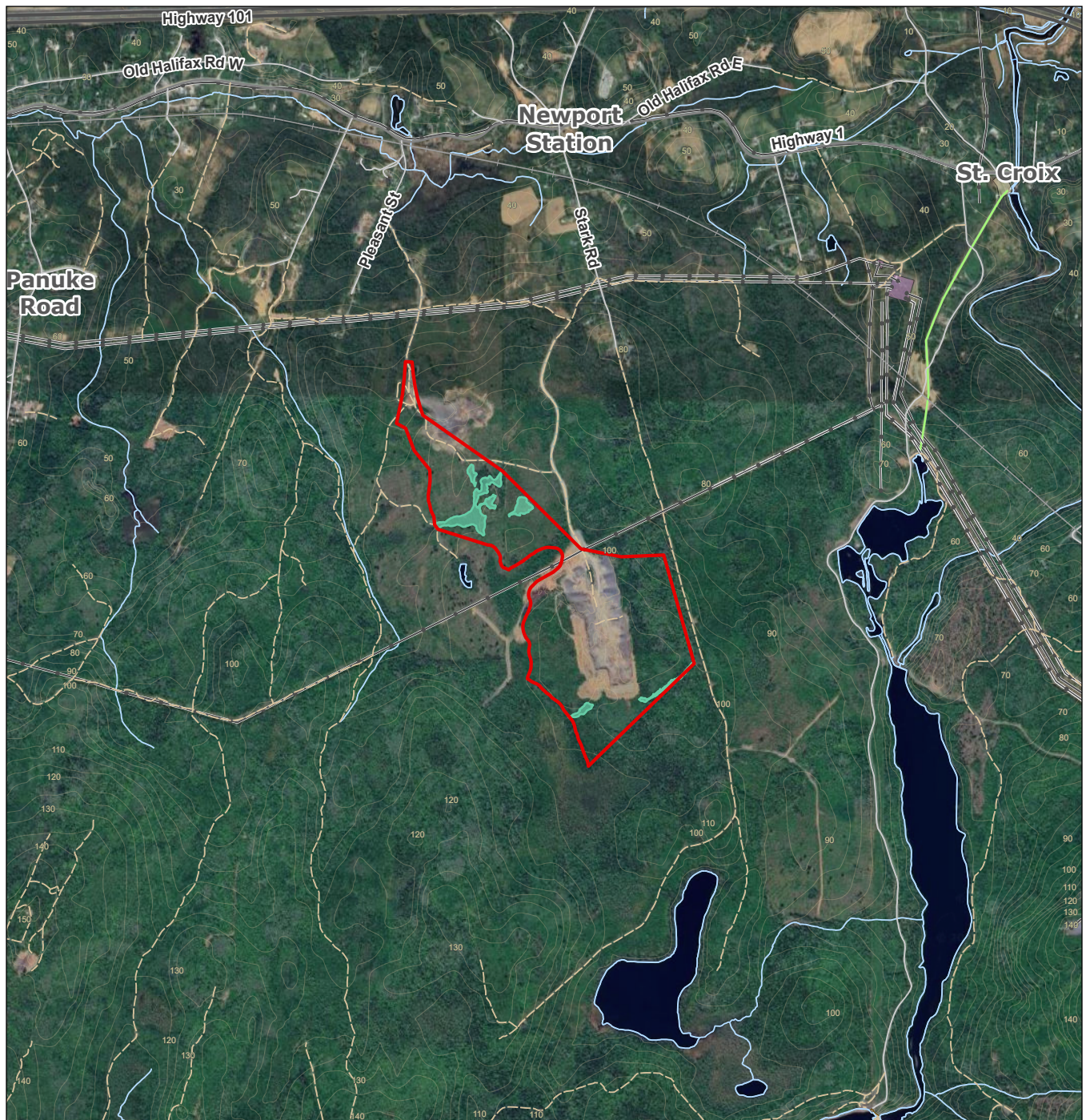
Mitigation: A Heritage Resources Accidental Discovery Plan will be implemented in the unanticipated event that heritage resources are encountered.

Conclusion

The Spence Aggregates Quarry Expansion Project will provide benefits to the community and mitigate environmental effects through comprehensive management plans, and compliance with environmental regulations. Engagement with local communities, regulatory agencies, and the Mi'kmaq of Nova Scotia will be ongoing throughout the project to maintain good communication and address potential concerns.



\\Ca0213-pplss01\work_group\1214\active\1XXX - Other PCs\1214_NB\121418033\gla\mapping\aprx\121418141_Spence_Quarry_Expansion.aprx Revised: 2025-05-12 By: schubbs



Notes
1. Coordinate System: NAD 1983 CSRS UTM Zone 20N
2. Data Sources: GeoNOVA, NRCAN, OSM, Stantec
3. Background: Google (n.d.) [Satellite Map Newport Station, NS], Retrieved 5/12/2025
Esri, TomTom, Garmin, FAO, NOAA, USGS, NRCAN, Parks Canada, Google, Maxar

Legend

- Project Development Area (PDA)
- Highway
- Local Highway
- Road
- Resource Road / Trail
- Railroad
- Pipeline
- Transmission Line
- ~ Contour (5m)
- Watercourse
- Dam
- Waterbody
- Wetland (Field Delineated)

0 200 400 metres
(At original document size of 8.5x11)
1:25,000



Project Location
Spence Quarry
Windsor, NS

Prepared by MB on 2025-01-09
Revised by SC on 2025-05-12

Client/Project
Spence Aggregates Limited
Spence Quarry
Expansion

121418141_011

Figure No.

1

Title
Project Location

Disclaimer: This document has been prepared based on information provided by others as cited in the Notes section. Stantec has not verified the accuracy and/or completeness of this information and shall not be responsible for any errors or omissions which may be incorporated herein as a result. Stantec assumes no responsibility for data supplied in electronic format, and the recipient accepts full responsibility for verifying the accuracy and completeness of the data.