

**LEGEND**

- Municipality Boundary
- Potential Development Area
- Existing NSPI Transmission Line

**Mi'kmaq Communities**

- Acadia
- Annapolis Valley
- Bear River
- Eskasoni
- Glooscap
- Membertou
- Millbrook
- Paq'tnkek
- Pictou Landing
- Potlotek
- Sipeknek'katik
- Wagmatcook
- We'Kiqma'q



**SUGAR MAPLE WIND ENERGY PROJECT**

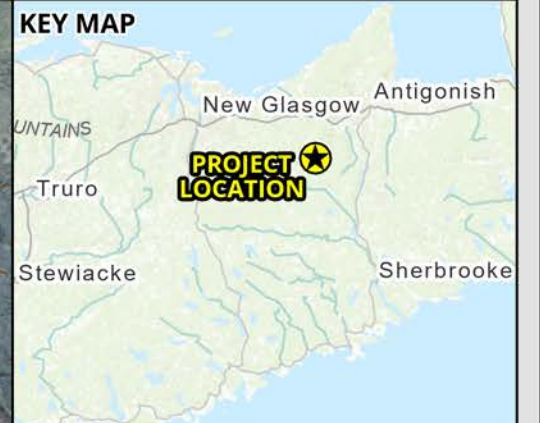
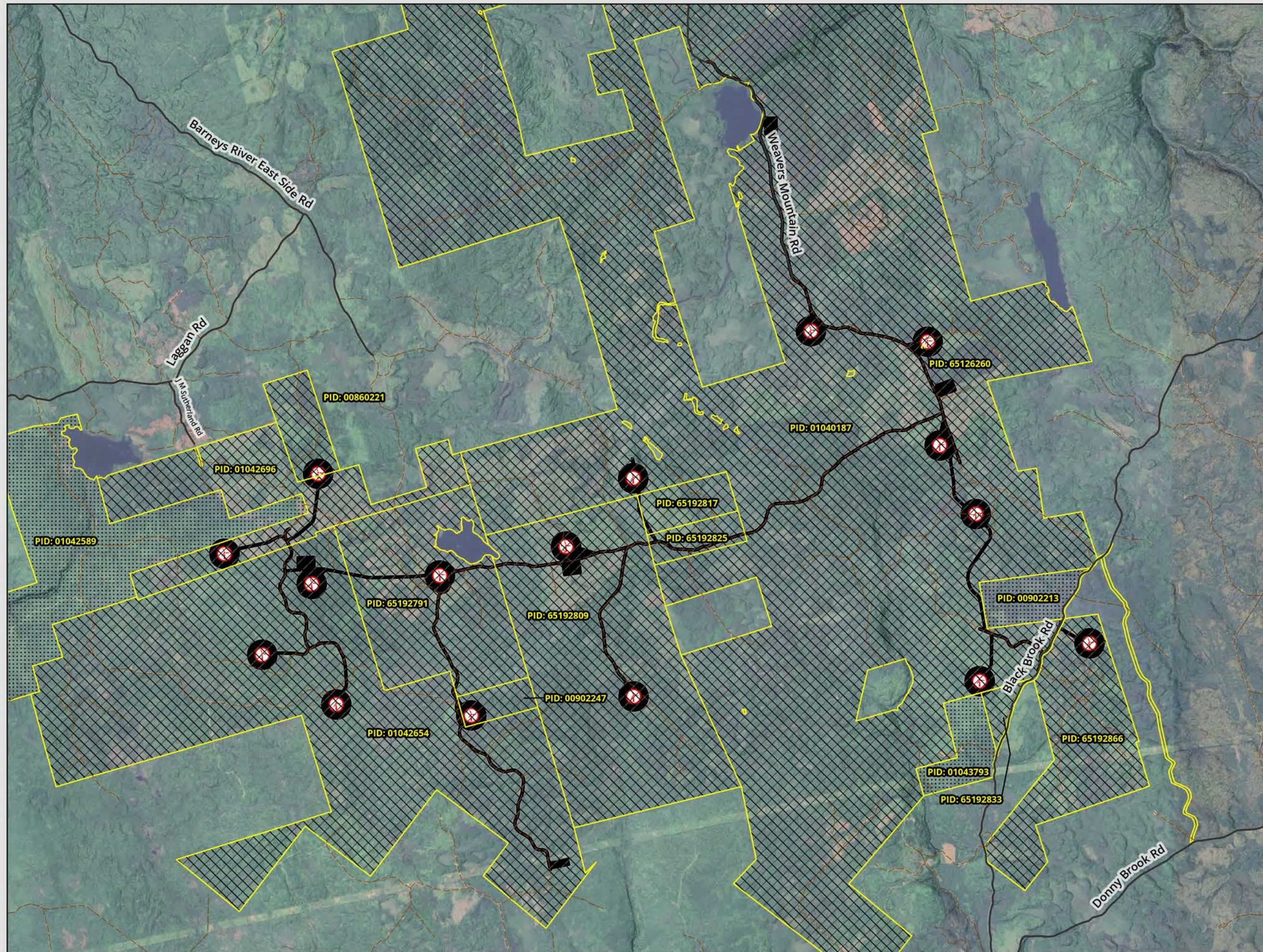
**Project Location**

DATE: 3/26/2026	PROJ N°: 251616	FIGURE: <b>1.1</b>
DRAWN BY: SF	CHECKED BY: NM	APPROVED: LH

NOTES:

0 4,000 8,000 16,000 m

SCALE: 1:325,000 Coordinate System: NAD 1983 UTM Zone 20N  
Units: Meter



- LEGEND**
- Property Boundaries
  - Crown Lands
  - Private Lands
  - Potential Development Area
  - Wind Turbine Generator (WTG)
  - Addressed Road (Major)
  - Trail / Resource Road / No Maintenance

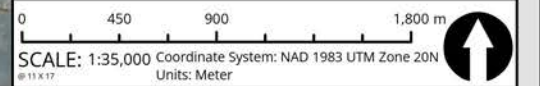


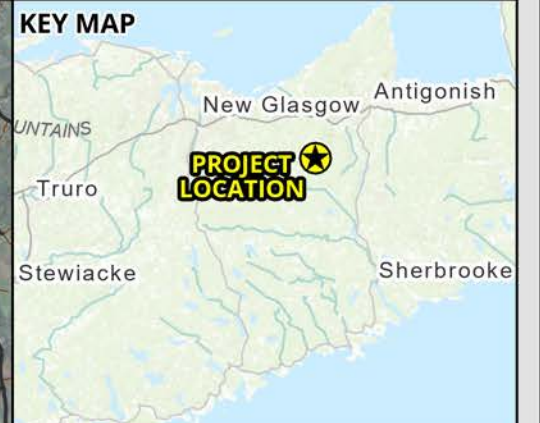
**SUGAR MAPLE  
WIND ENERGY PROJECT**

**Property Ownership  
Within Project Lands**

DATE: 3/19/2026	PROJ N°: 251616	FIGURE: <b>1.2</b>
DRAWN BY: SF	CHECKED BY: NM	APPROVED: NM

NOTES:





**LEGEND**

- WTG
- Potential Development Area
- Addressed Road (Major)
- - - Trail / Resource Road / No Maintenance

**ACCDC Managed & Biologically Significant Areas Database**

*Managed Areas*

- ▨ Nature Reserve
- ▭ Water Supply Area



**SUGAR MAPLE WIND ENERGY PROJECT**

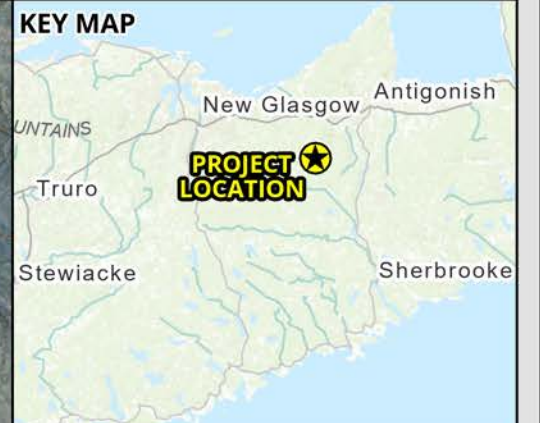
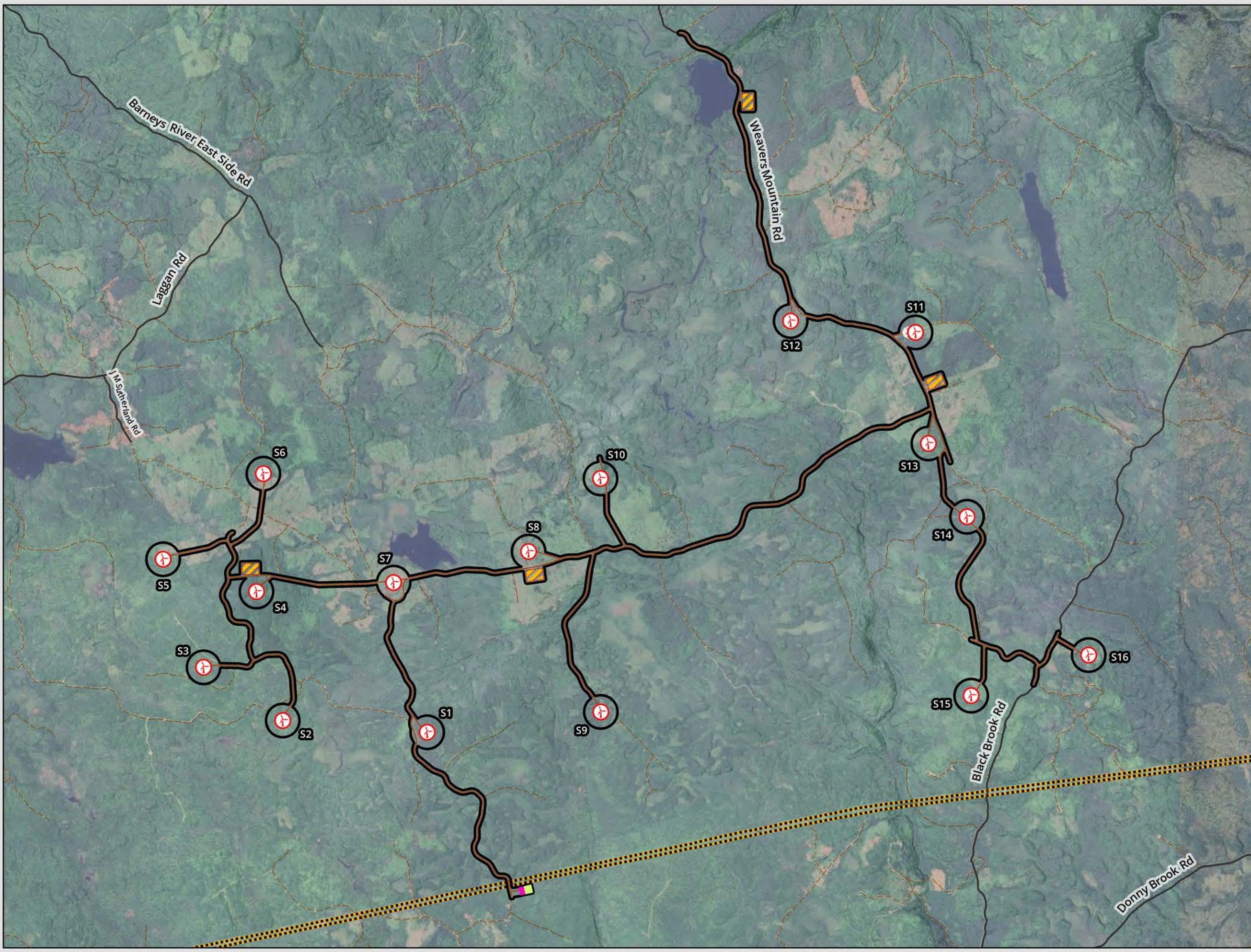
**Atlantic Canada Conservation Data Centre: Managed and Biologically Significant Areas**

DATE: 3/19/2026	PROJ N°: 251616	FIGURE: <b>1.3</b>
DRAWN BY: SF	CHECKED BY: NM	APPROVED: NM

NOTES:

0 1,000 2,000 4,000 m

SCALE: 1:90,000 Coordinate System: NAD 1983 UTM Zone 20N Units: Meter



- ### LEGEND
- Project Infrastructure**
- Potential Development Area
  - WTG (16)
  - Alternate WTG
  - Access Road
  - Electrical Switchyard Footprint
  - Electrical Substation Footprint
  - Potential Laydown Area
  - NSPI Transmission Corridor
  - Addressed Road (Major)
  - Trail / Resource Road / No Maintenance



## SUGAR MAPLE WIND ENERGY PROJECT

### Project Layout

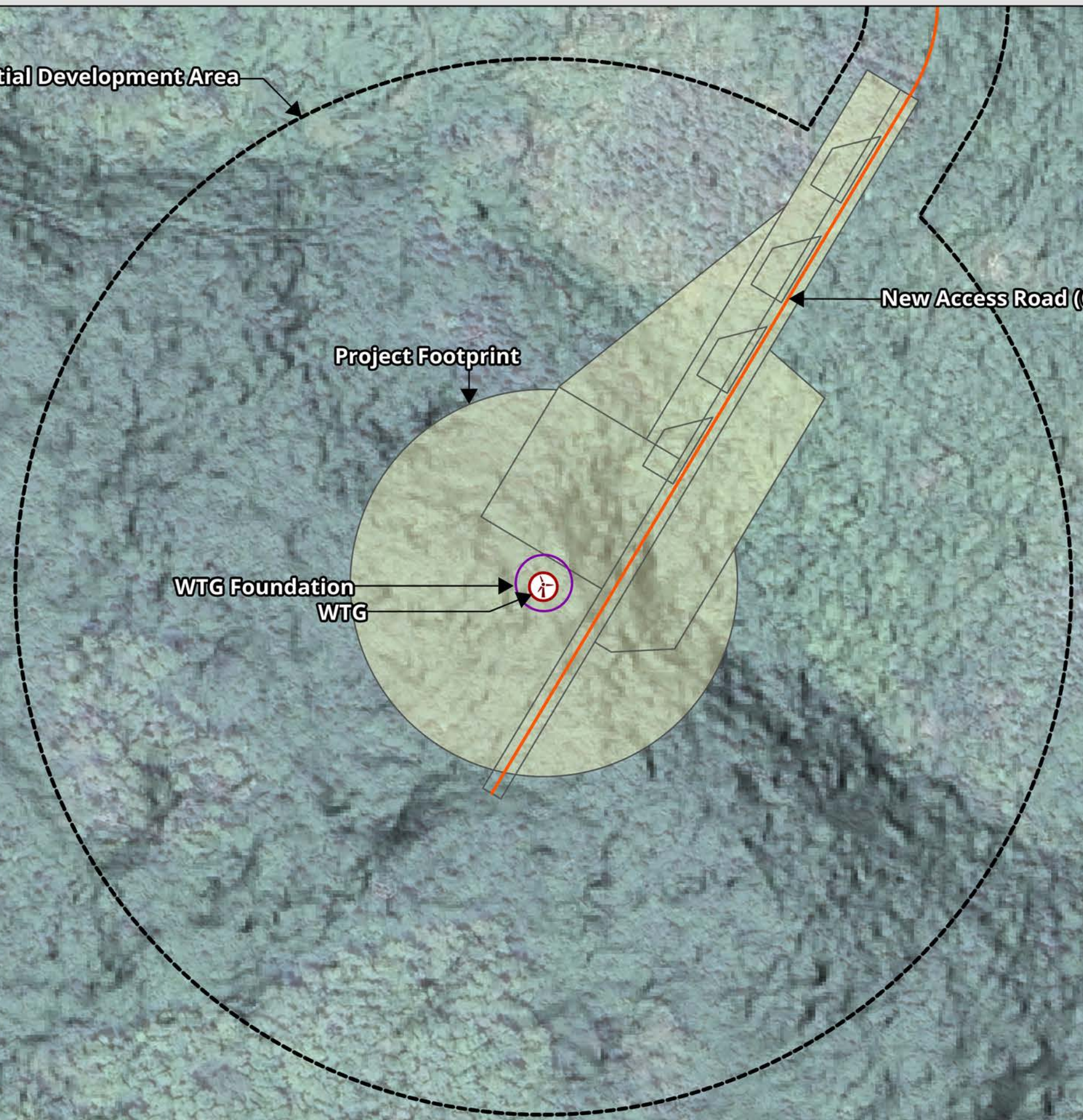
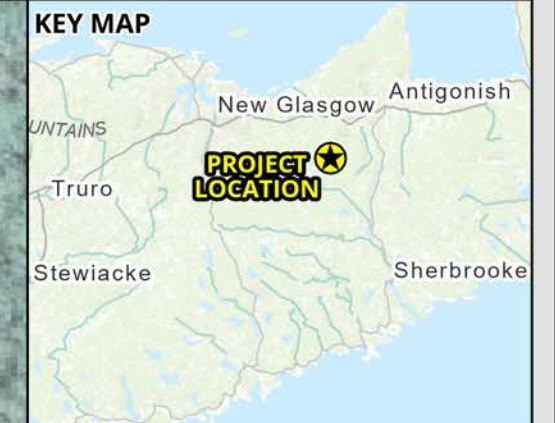
DATE: 3/19/2026	PROJ N°: 251616	FIGURE: <b>2.1</b>
DRAWN BY: SF	CHECKED BY: NM	APPROVED: NM

NOTES:

0 425 850 1,700 m

SCALE: 1:32,500 Coordinate System: NAD 1983 UTM Zone 20N  
Units: Meter

Document Path: C:\SDRIVES\SWEB\SUMMA\PROJ\251616\_SWEB\_SugarMapleWind\_DBA\TEARIGS.aprx - sfrokkes - 25/Mar/2026

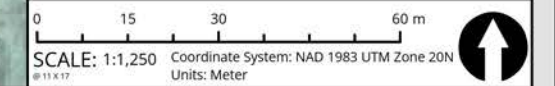


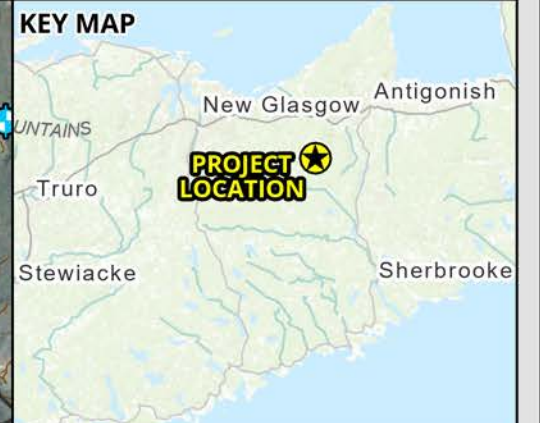
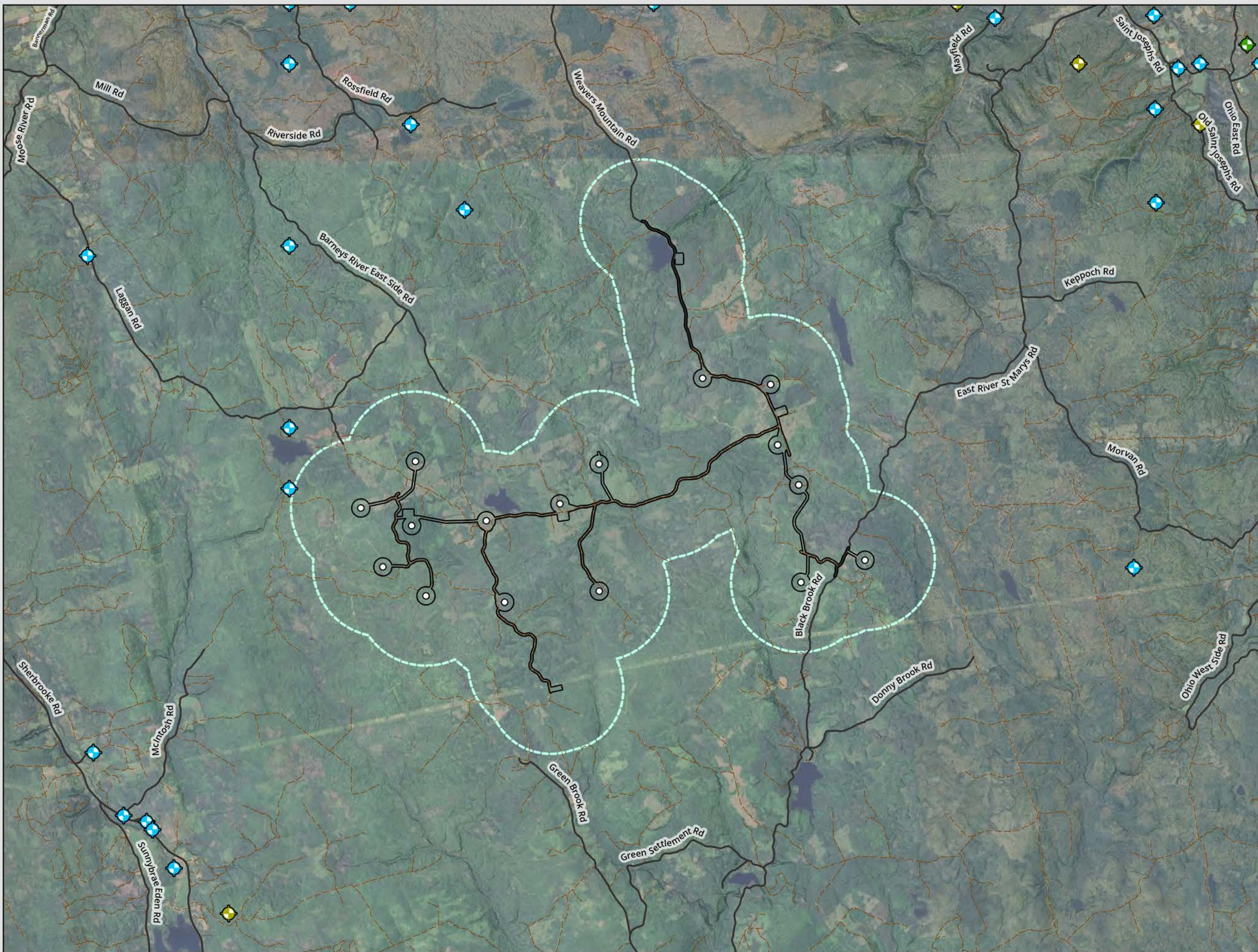
SUGAR MAPLE  
WIND ENERGY PROJECT

**Typical WTG Layout  
During Construction**

DATE: 3/25/2026	PROJ N°: 251616	FIGURE: <b>2.2</b>
DRAWN BY: SF	CHECKED BY: NM	APPROVED: NM

NOTES:





- LEGEND**
- WTG
  - ▭ Potential Development Area
  - ▭ 1km Potential Development Area Buffer
  - ▬ Addressed Road (Major)
  - ▬ Trail / Resource Road / No Maintenance

- Nova Scotia Well Logs Database**
- Water Use Type*
- ◆ Unknown Use (10)
  - ◆ Domestic Use (28)
  - ◆ Municipal Use (1)



SUGAR MAPLE  
WIND ENERGY PROJECT

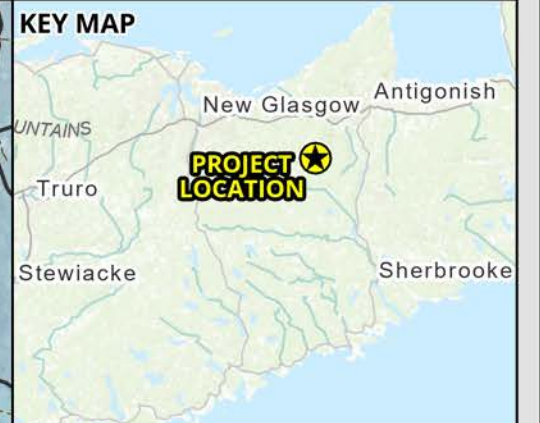
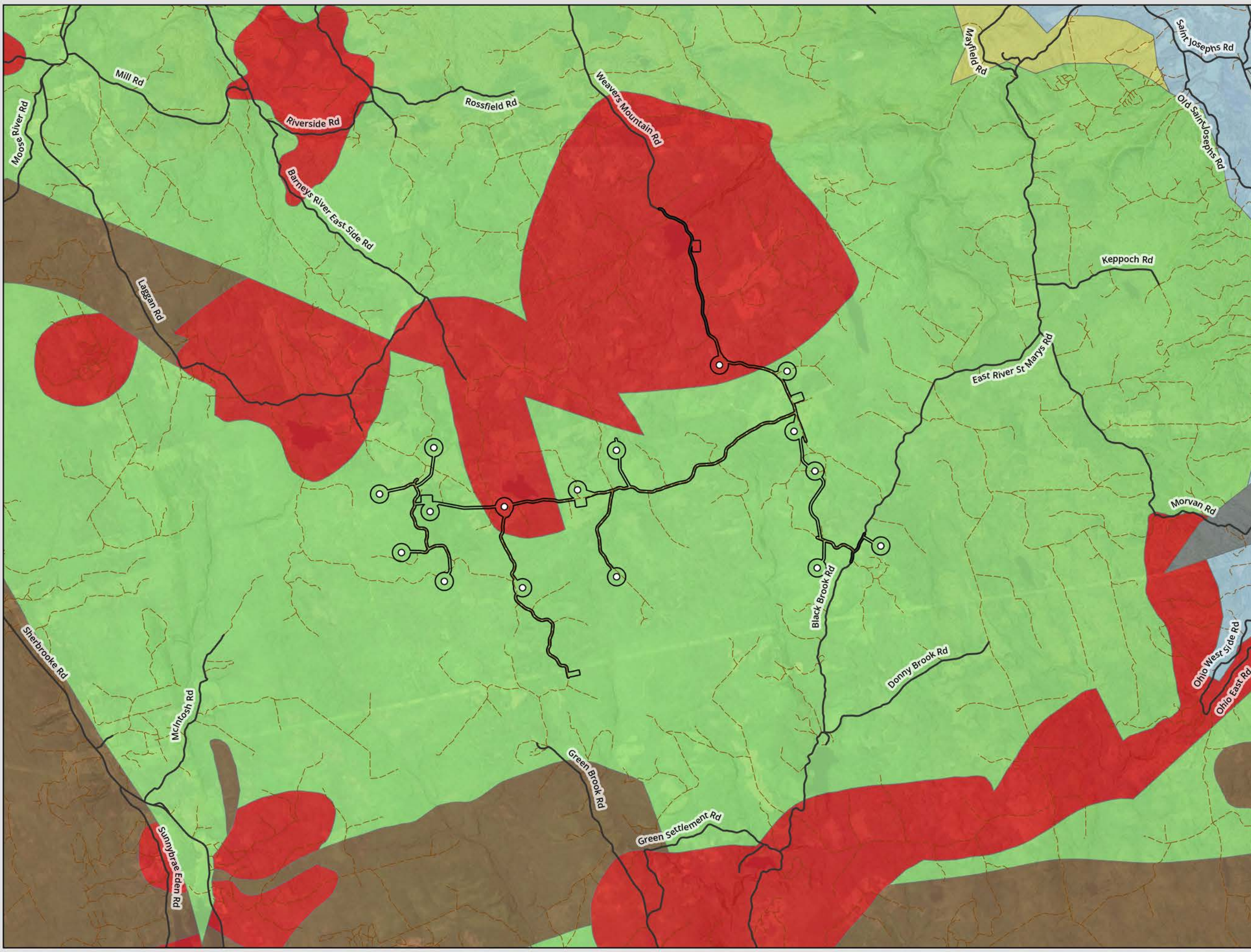
**Nova Scotia  
Well Water Database**

DATE: 3/19/2026	PROJ N°: 251616	FIGURE: <b>6.1</b>
DRAWN BY: SF	CHECKED BY: RT	APPROVED: NM

NOTES:

0 750 1,500 3,000 m

SCALE: 1:60,000 Coordinate System: NAD 1983 UTM Zone 20N  
Units: Meter



- ### LEGEND
- WTG
  - Potential Development Area
  - Addressed Road (Major)
  - - - Trail / Resource Road / No Maintenance

- ### Bedrock Geology (NSTD, 2026)
- Arisaig Group
  - Georgeville Group
  - Horton Group
  - Devonian - Carboniferous granite
  - Mabou Group
  - Windsor Group



## SUGAR MAPLE WIND ENERGY PROJECT

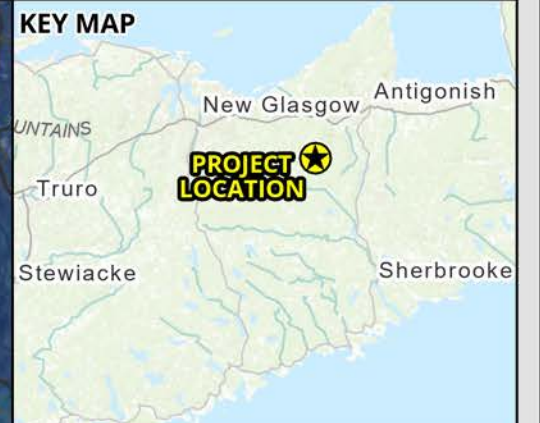
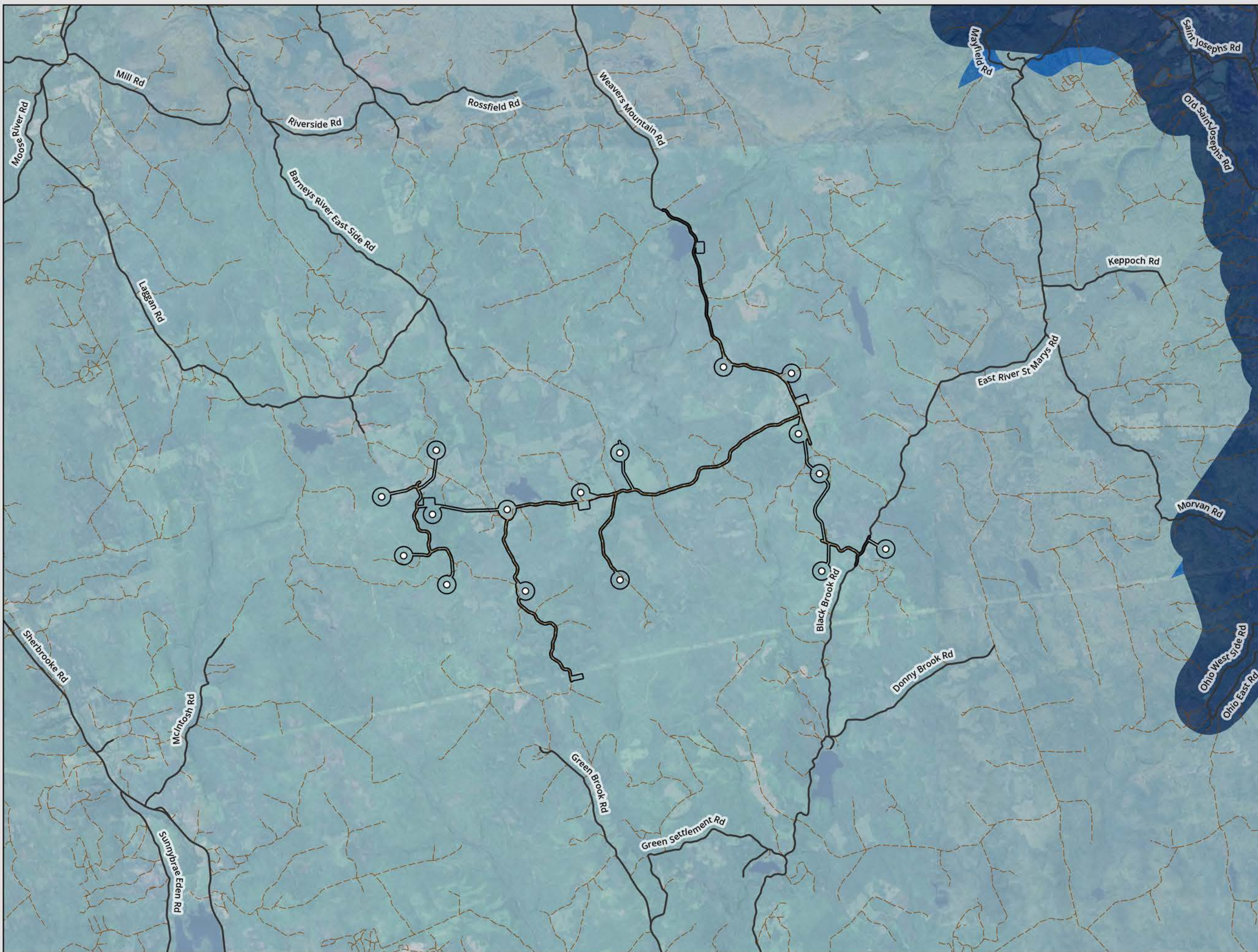
### Bedrock Geology

DATE: 3/19/2026	PROJ N°: 251616	FIGURE: <b>6.2</b>
DRAWN BY: SF	CHECKED BY: RT	APPROVED: NM

NOTES:

0 750 1,500 3,000 m

SCALE: 1:60,000 Coordinate System: NAD 1983 UTM Zone 20N Units: Meter



- LEGEND**
- WTG
  - Potential Development Area
  - ▬ Addressed Road (Major)
  - ▬ Trail / Resource Road / No Maintenance

- Karst Risk (NSTD, 2025)**
- High Karst Potential (96% of documented sinkholes)
  - Moderate Karst Potential
  - Low Karst Potential



**SUGAR MAPLE  
WIND ENERGY PROJECT**

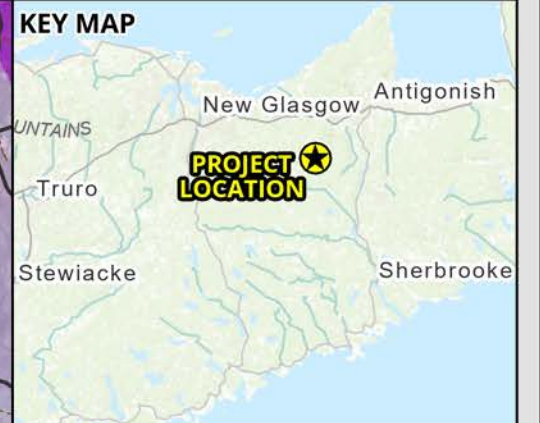
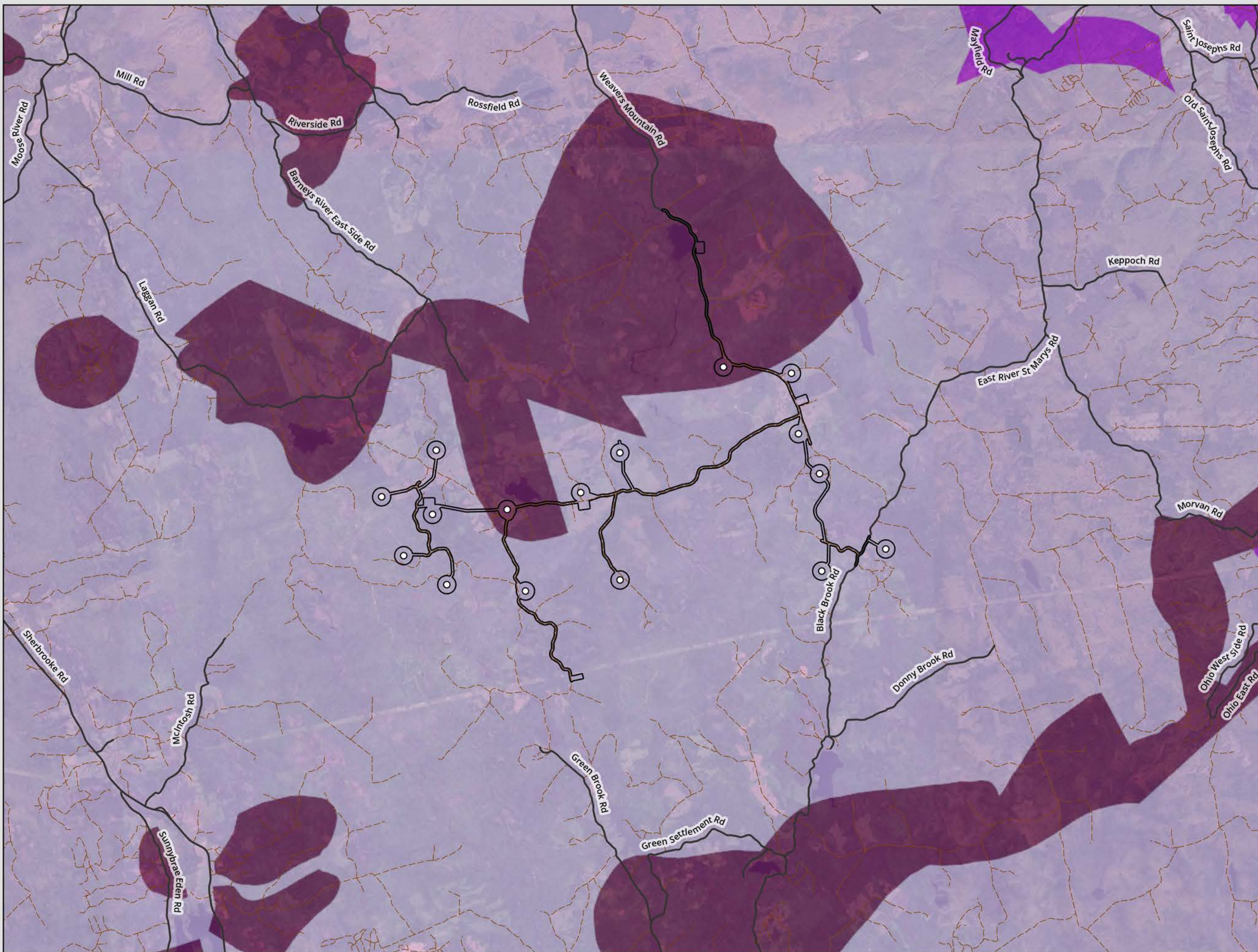
**Karst Risk**

DATE: 3/19/2026	PROJ N°: 251616	FIGURE: <b>6.3</b>
DRAWN BY: SF	CHECKED BY: RT	APPROVED: NM

NOTES:

0 750 1,500 3,000 m

SCALE: 1:60,000 Coordinate System: NAD 1983 UTM Zone 20N  
Units: Meter



**LEGEND**

- WTG
- Potential Development Area
- Addressed Road (Major)
- - - Trail / Resource Road / No Maintenance

**Relative Risk of Arsenic in Well Water (Bedrock Wells)**

- Low Risk
- Medium Risk
- High Risk

**CBCL**

**SUGAR MAPLE WIND ENERGY PROJECT**

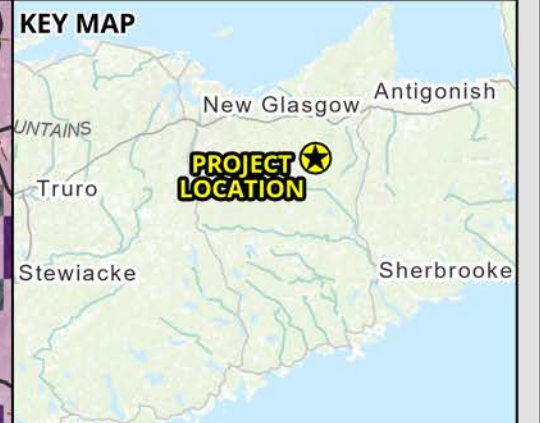
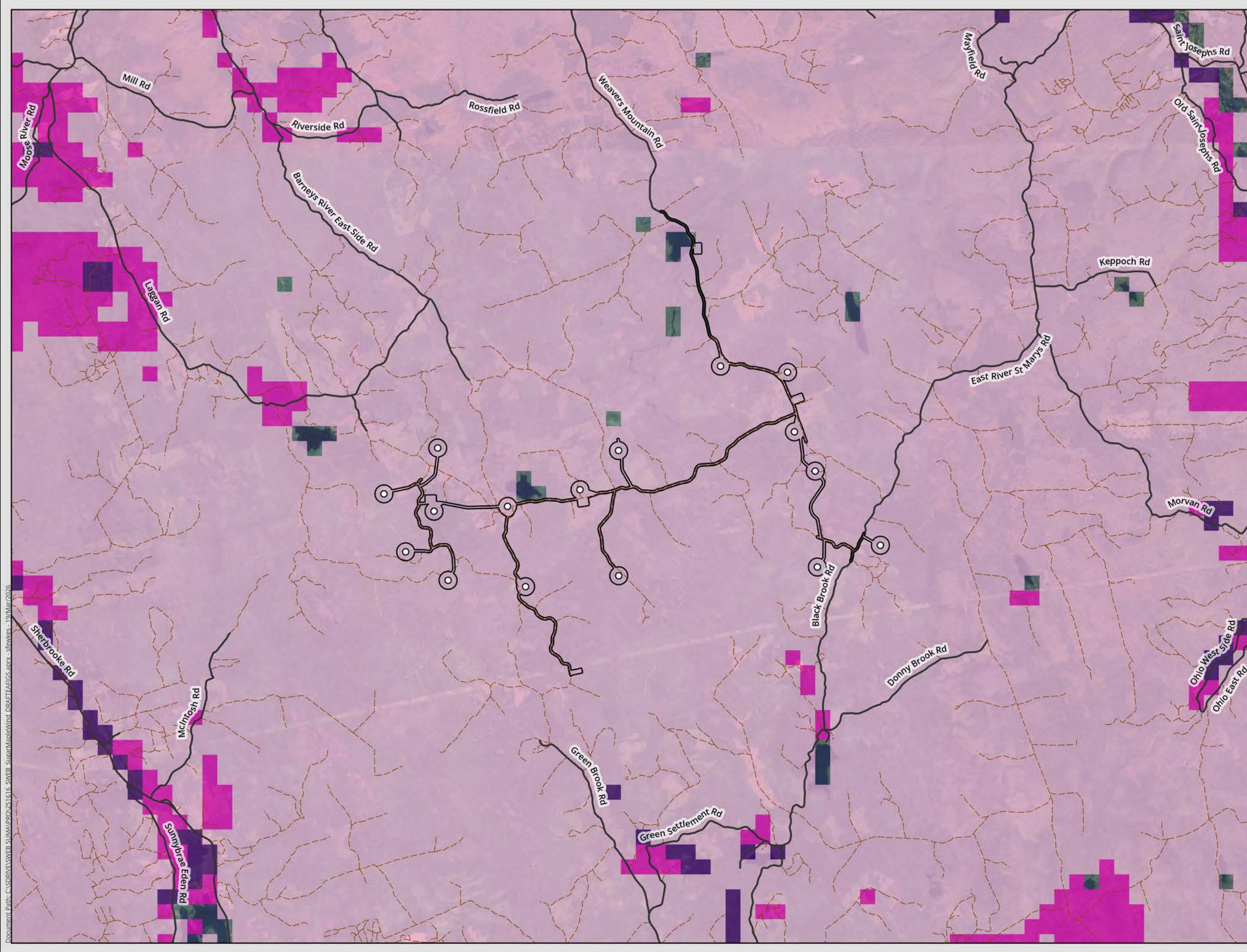
**Arsenic Risk to Bedrock Groundwater Wells**

DATE: 3/19/2026	PROJ N°: 251616	FIGURE: <b>6.4</b>
DRAWN BY: SF	CHECKED BY: RT	APPROVED: NM

NOTES:

0 750 1,500 3,000 m

SCALE: 1:60,000 Coordinate System: NAD 1983 UTM Zone 20N Units: Meter



- LEGEND**
- WTG
  - Potential Development Area
  - Addressed Road (Major)
  - - - Trail / Resource Road / No Maintenance

- Potential for Radon in Indoor Air**
- Low Risk
  - Medium Risk
  - High Risk



**SUGAR MAPLE  
WIND ENERGY PROJECT**

**Potential For Radon  
in Indoor Air**

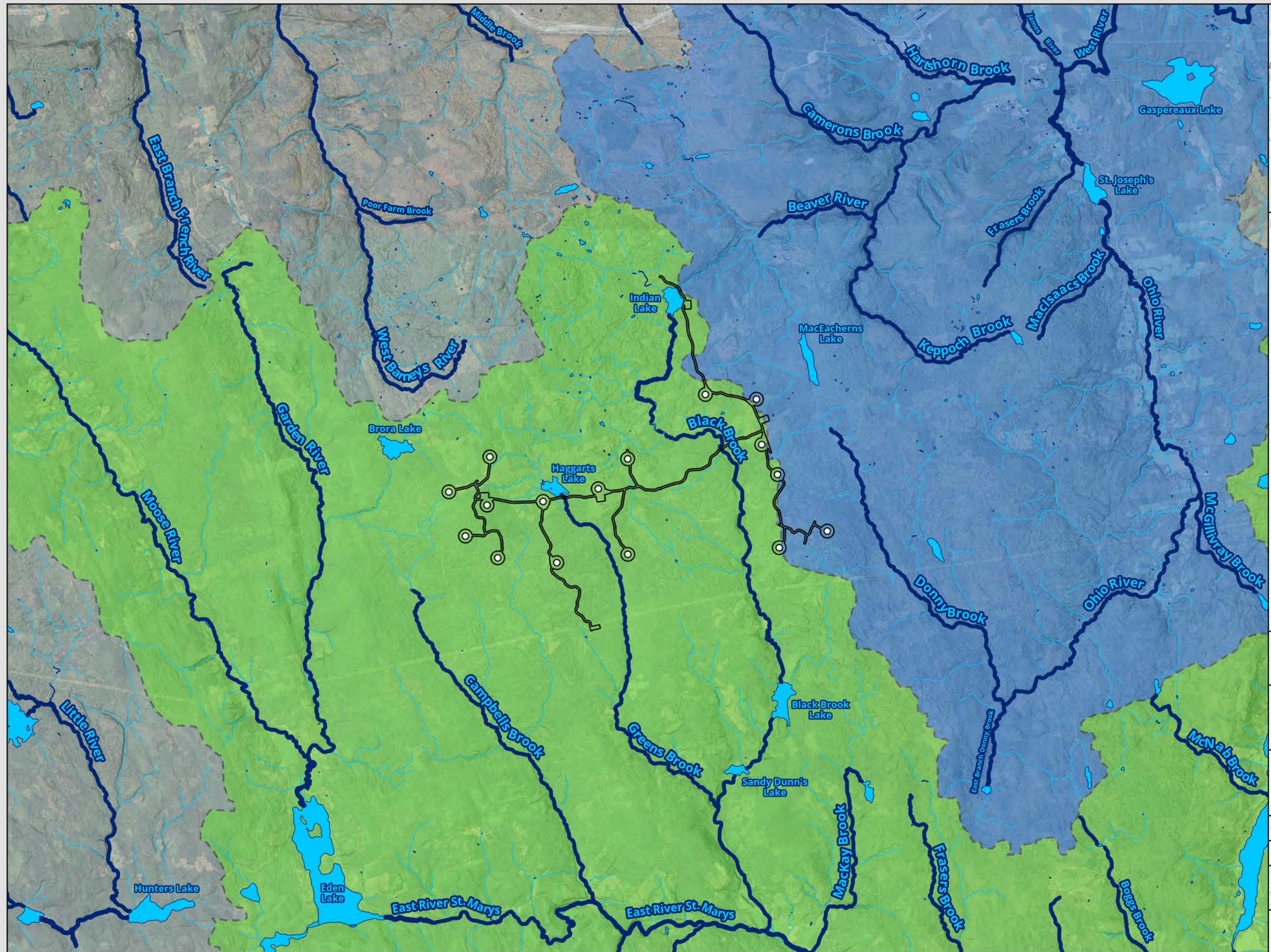
DATE: 3/19/2026	PROJ N°: 251616	FIGURE: 6.5
DRAWN BY: SF	CHECKED BY: RT	APPROVED: NM

NOTES:

0 750 1,500 3,000 m

SCALE: 1:60,000 Coordinate System: NAD 1983 UTM Zone 20N  
Units: Meter

Document Path: C:\SDBRIVES\SWEB\SUMAP\PROJ251616\_SWEB\_SugarMapleWind\_DRA\ETARIGS\_andr\_sfwkkes\_19/Mar/2026



- LEGEND**
- WTG
  - Potential Development Area
  - Nova Scotia Hydrologic Network (NSTD, 2025)
  - ~ Major Watercourse (Named)
  - ~ Minor Watercourse (Unnamed)
  - Waterbody
  - Secondary Watershed Boundary (NSTD, 2025)
  - St. Mary's River
  - West River

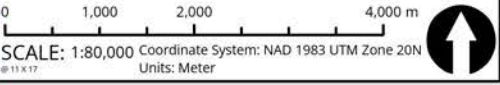


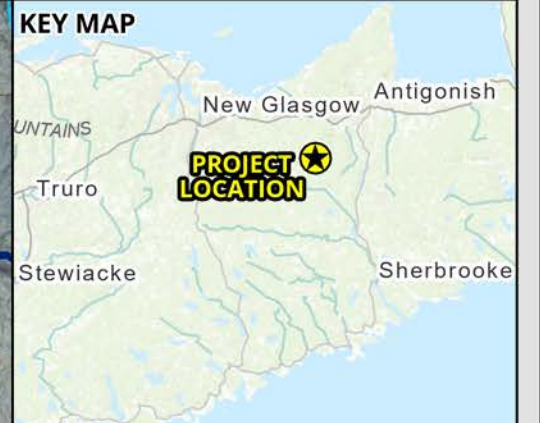
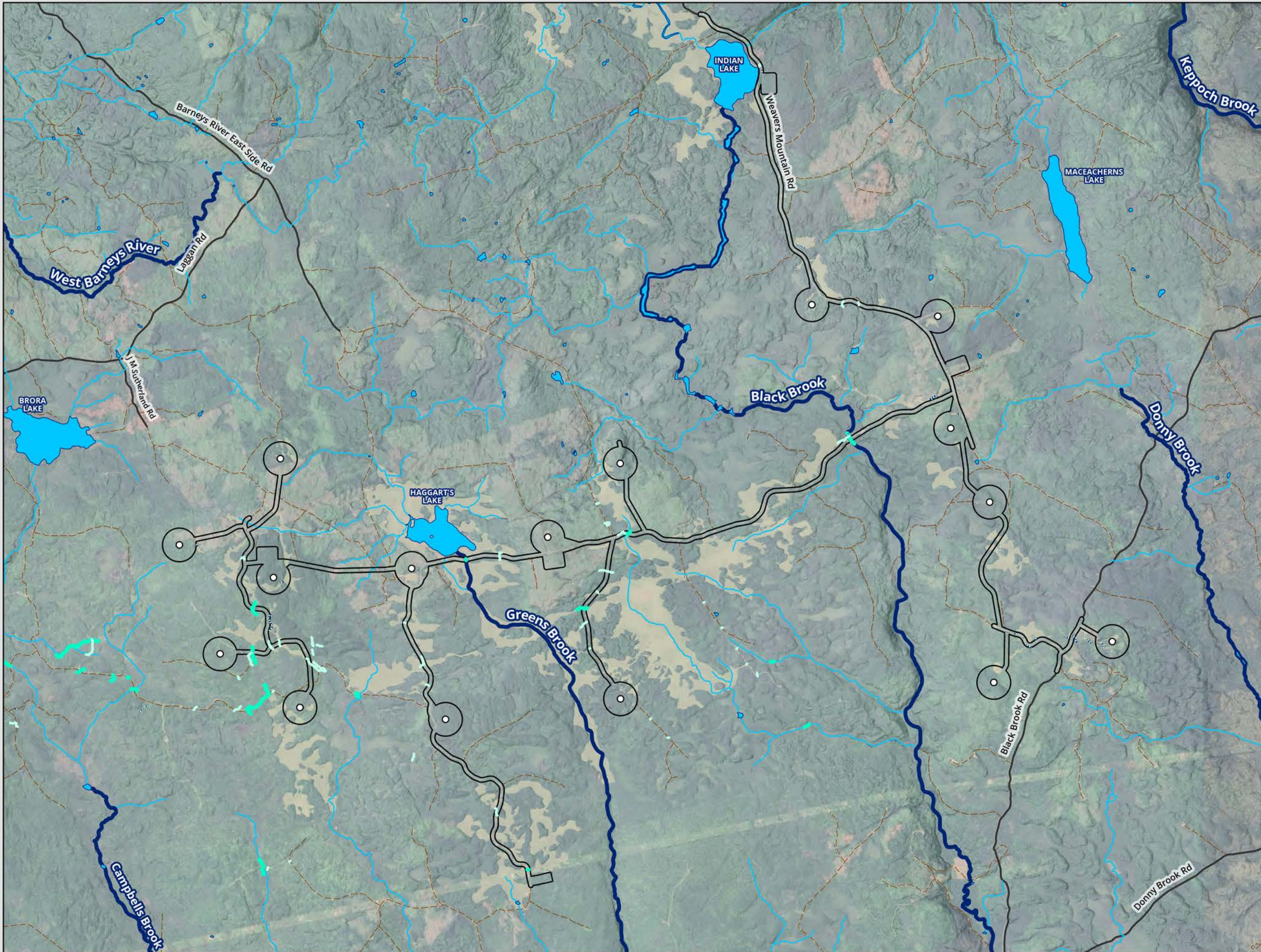
SUGAR MAPLE  
WIND ENERGY PROJECT

**Watersheds & Major  
Watercourses**

DATE: 3/19/2026	PROJ N°: 251616	FIGURE: 7.1
DRAWN BY: SF	CHECKED BY: MB	APPROVED: LH

NOTES:  
 - Watershed boundaries are approximate, and, are meant to be geographic representations only  
 - Accessed from the Nova Scotia Topographic Database, 2025





### LEGEND

**Assessed Watercourses**

*Watercourse*

- Small / Large Permanent Watercourse
- Ephemeral / Intermittent Watercourse

*Drainage Channel*

- Drainage Channel

**Nova Scotia Hydrologic Network (NSTD, 2025)**

- Waterbody
- Major Watercourse (Named)
- Minor Watercourse (Unnamed)
- WTG
- Potential Development Area
- Addressed Road (Major)
- Trail / Resource Road / No Maintenance
- Wetland (Delineated)

**SUGAR MAPLE  
WIND ENERGY PROJECT**

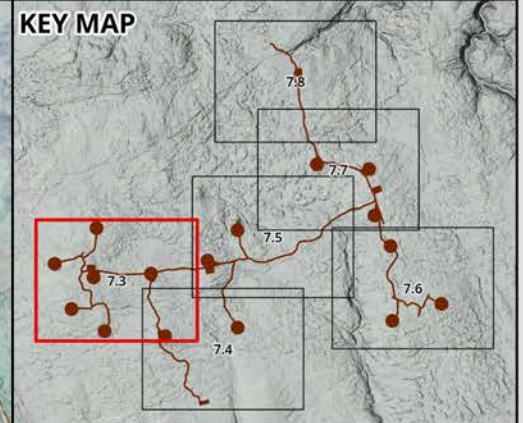
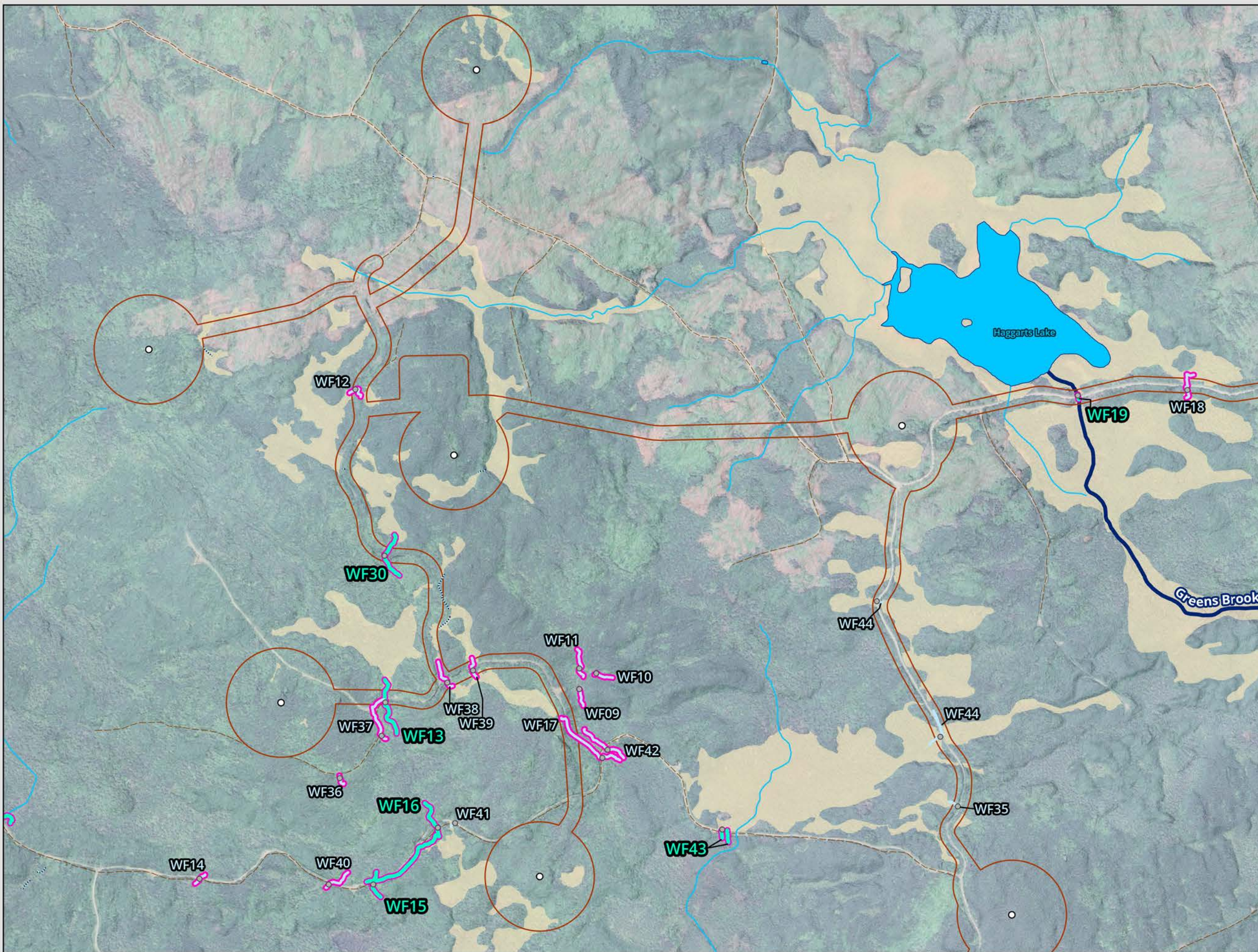
## Watercourse Assessment Results: Overview

DATE: 3/19/2026	PROJ N°: 251616	FIGURE: <b>7.2</b>
DRAWN BY: SF	CHECKED BY: MB	APPROVED: LH

NOTES:

0 425 850 1,700 m

SCALE: 1:32,500 Coordinate System: NAD 1983 UTM Zone 20N  
Units: Meter



**LEGEND**

**Assessed Watercourses**

*Watercourse*

- Small / Large Permanent Watercourse
- Ephemeral / Intermittent Watercourse

*Drainage Channel*

- Drainage Channel

- Watercourse Assessment Location
- Potential Fish Bearing Watercourse

**Nova Scotia Hydrologic Network (NSTD, 2025)**

- Waterbody
- Major Watercourse (Named)
- Minor Watercourse (Unnamed)
- WTG
- Potential Development Area
- Addressed Road (Major)
- Trail / Resource Road / No Maintenance
- Wetland (Delineated)



**SUGAR MAPLE  
WIND ENERGY PROJECT**

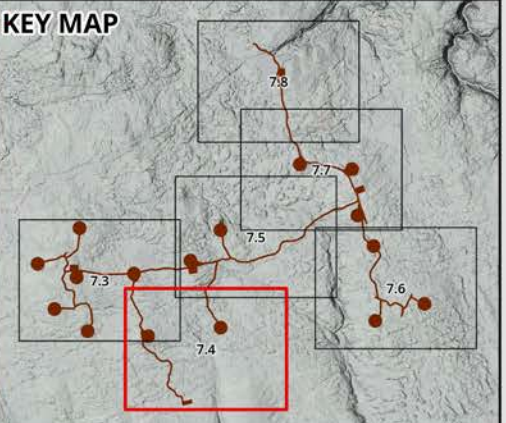
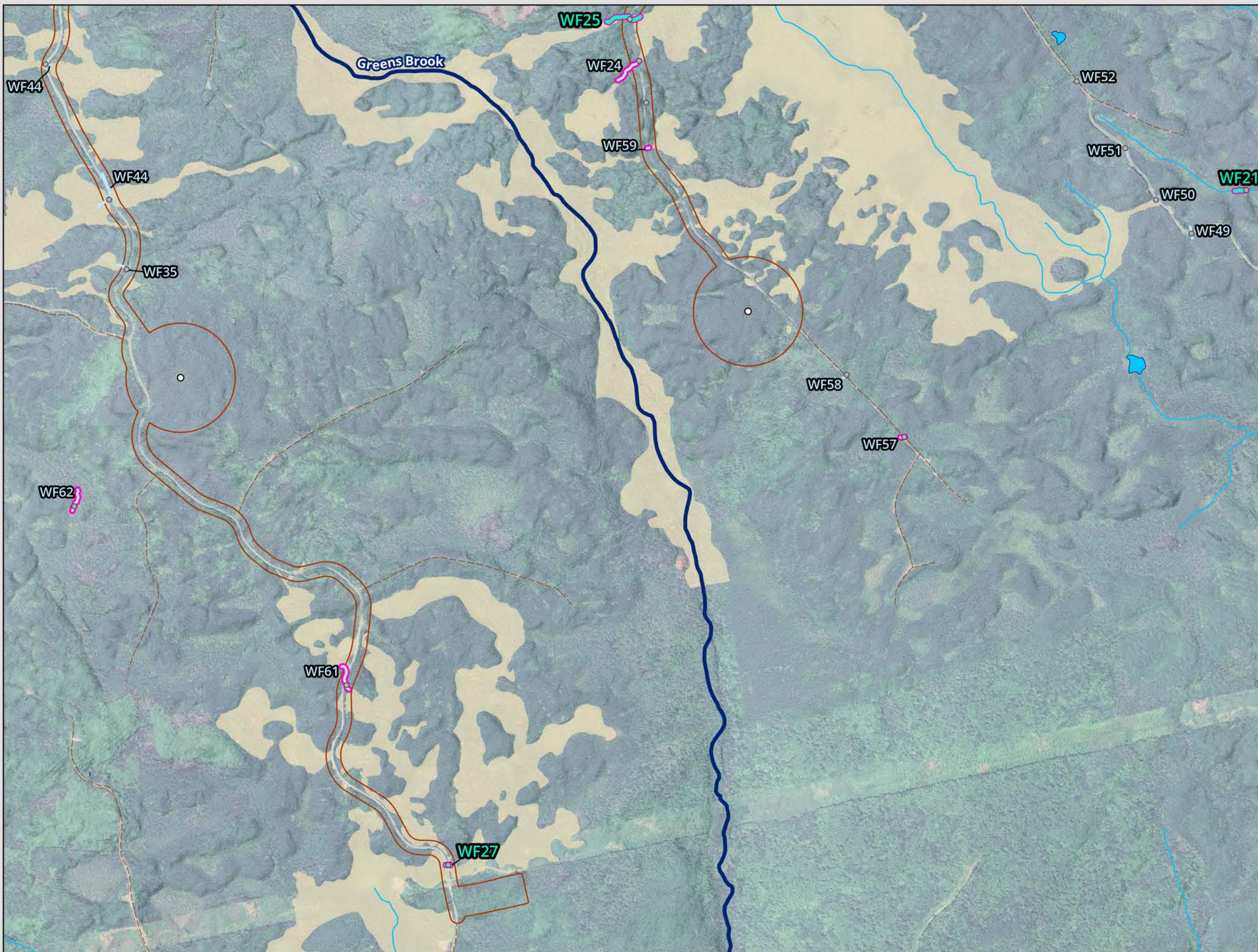
**Watercourse Assessment  
Results  
1 of 6**

DATE: 3/19/2026	PROJ N°: 251616	FIGURE: <b>7.3</b>
DRAWN BY: SF	CHECKED BY: MB	APPROVED: LH

NOTES:

0 125 250 500 m

SCALE: 1:10,000 Coordinate System: NAD 1983 UTM Zone 20N  
Units: Meter



**LEGEND**

**Assessed Watercourses**

*Watercourse*

- Small / Large Permanent Watercourse
- Ephemeral / Intermittent Watercourse

*Drainage Channel*

- Drainage Channel

- Watercourse Assessment Location
- Potential Fish Bearing Watercourse

**Nova Scotia Hydrologic Network (NSTD, 2025)**

- Waterbody
- Major Watercourse (Named)
- Minor Watercourse (Unnamed)
- WTG
- Potential Development Area
- Addressed Road (Major)
- Trail / Resource Road / No Maintenance
- Wetland (Delineated)



**SUGAR MAPLE  
WIND ENERGY PROJECT**

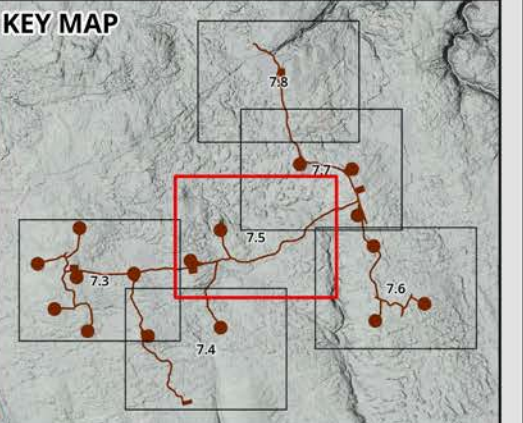
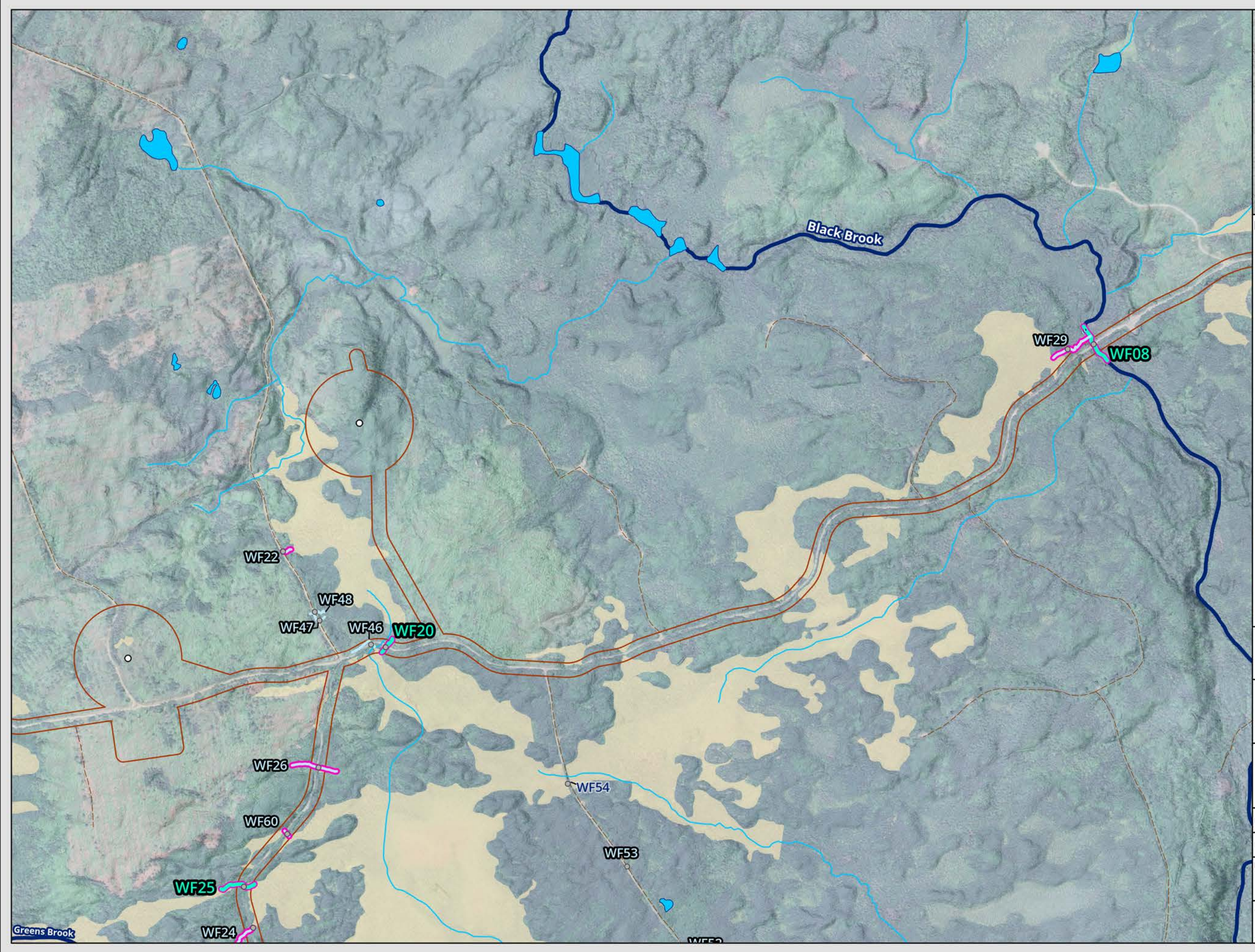
**Watercourse Assessment  
Results  
2 of 6**

DATE: 3/19/2026	PROJ N°: 251616	FIGURE: <b>7.4</b>
DRAWN BY: SF	CHECKED BY: MB	APPROVED: LH

NOTES:

0 125 250 500 m

SCALE: 1:10,000 Coordinate System: NAD 1983 UTM Zone 20N  
Units: Meter



- LEGEND**
- Assessed Watercourses**
- Watercourse*
- Small / Large Permanent Watercourse
  - Ephemeral / Intermittent Watercourse
- Drainage Channel*
- Drainage Channel
- Watercourse Assessment Location
  - Potential Fish Bearing Watercourse
- Nova Scotia Hydrologic Network (NSTD, 2025)**
- Waterbody
  - Major Watercourse (Named)
  - Minor Watercourse (Unnamed)
  - WTG
  - Potential Development Area
  - Addressed Road (Major)
  - Trail / Resource Road / No Maintenance
  - Wetland (Delineated)

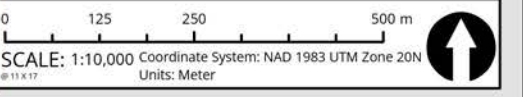


**SUGAR MAPLE  
WIND ENERGY PROJECT**

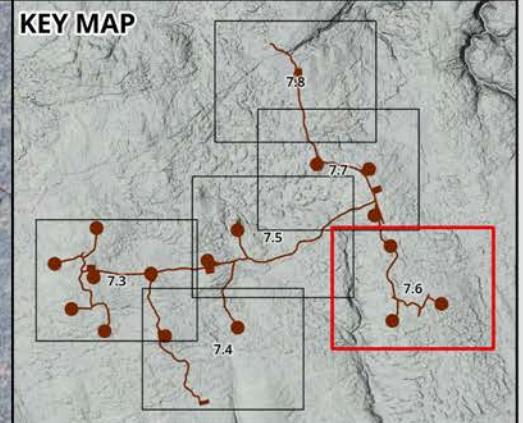
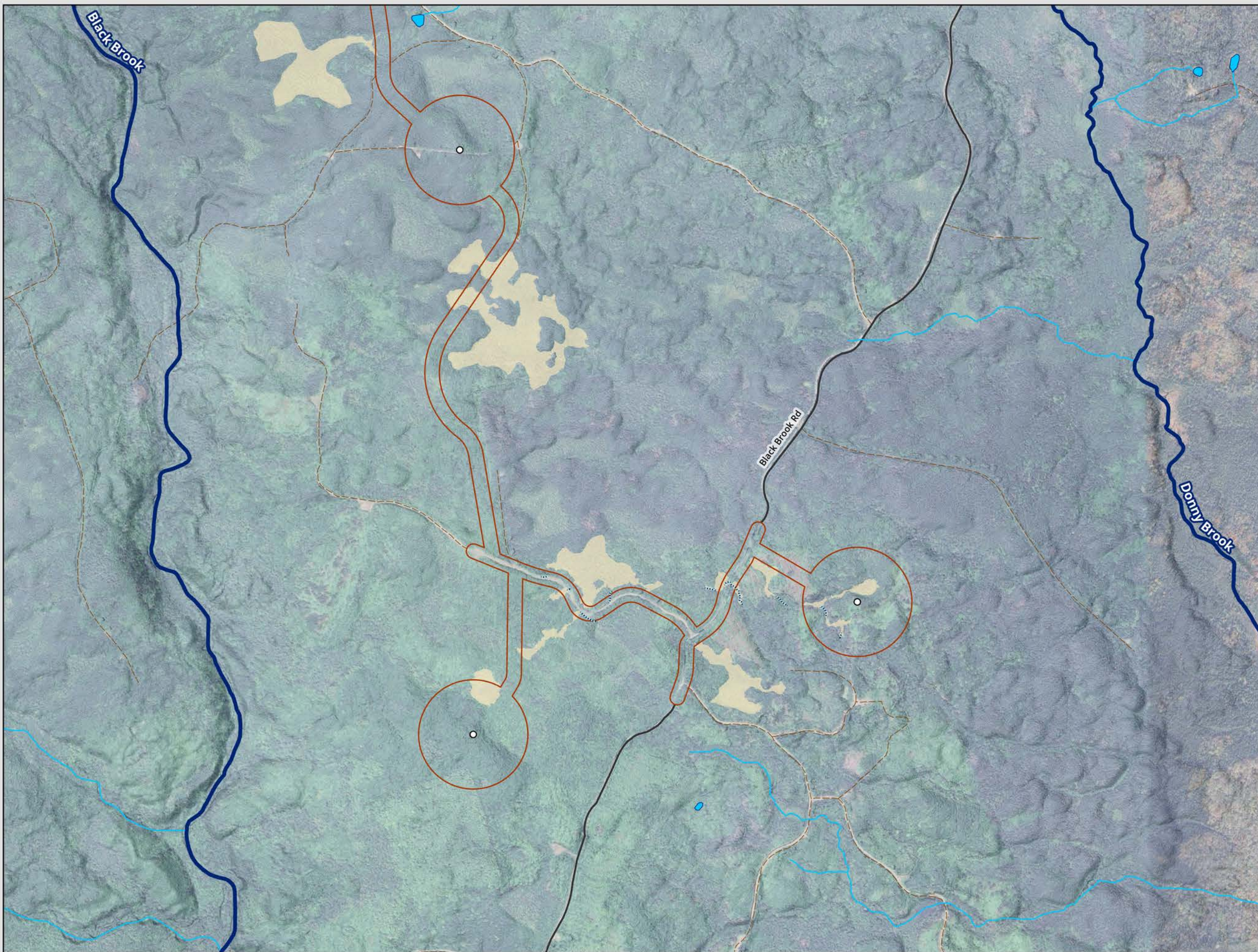
**Watercourse Assessment  
Results  
3 of 6**

DATE: 3/19/2026	PROJ N°: 251616	FIGURE: <b>7.5</b>
DRAWN BY: SF	CHECKED BY: MB	APPROVED: LH

NOTES:



Greens Brook



**LEGEND**

**Assessed Watercourses**

*Watercourse*

- Small / Large Permanent Watercourse
- Ephemeral / Intermittent Watercourse

*Drainage Channel*

- Drainage Channel
- Watercourse Assessment Location
- Potential Fish Bearing Watercourse

**Nova Scotia Hydrologic Network (NSTD, 2025)**

- Waterbody
- Major Watercourse (Named)
- Minor Watercourse (Unnamed)
- WTG
- Potential Development Area
- Addressed Road (Major)
- Trail / Resource Road / No Maintenance
- Wetland (Delineated)



**SUGAR MAPLE  
WIND ENERGY PROJECT**

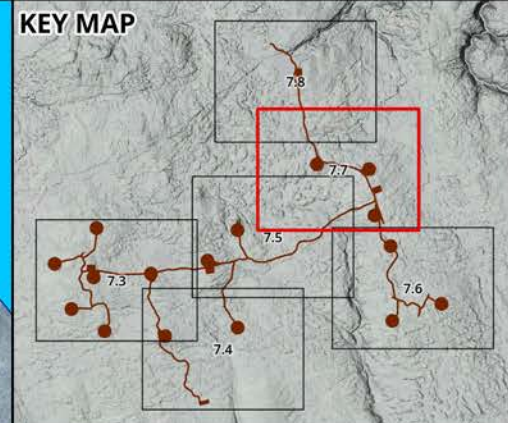
**Watercourse Assessment  
Results  
4 of 6**

DATE: 3/19/2026	PROJ N°: 251616	FIGURE: <b>7.6</b>
DRAWN BY: SF	CHECKED BY: MB	APPROVED: LH

NOTES:

0 125 250 500 m

SCALE: 1:10,000 Coordinate System: NAD 1983 UTM Zone 20N  
Units: Meter



- LEGEND**
- Assessed Watercourses**
- Watercourse**
    - Small / Large Permanent Watercourse
    - Ephemeral / Intermittent Watercourse
  - Drainage Channel**
    - Drainage Channel
  - Watercourse Assessment Location
  - Potential Fish Bearing Watercourse
- Nova Scotia Hydrologic Network (NSTD, 2025)**
- Waterbody
  - Major Watercourse (Named)
  - Minor Watercourse (Unnamed)
  - WTG
  - Potential Development Area
  - Addressed Road (Major)
  - Trail / Resource Road / No Maintenance
  - Wetland (Delineated)

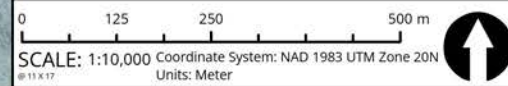


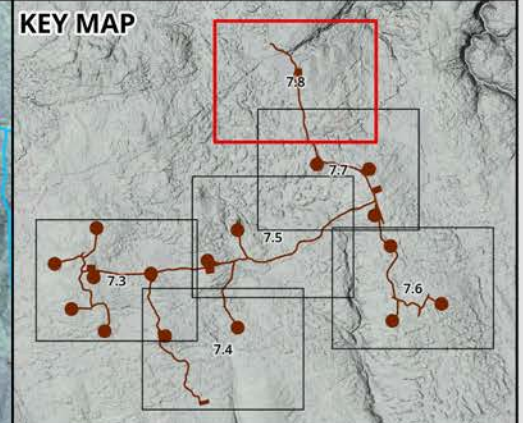
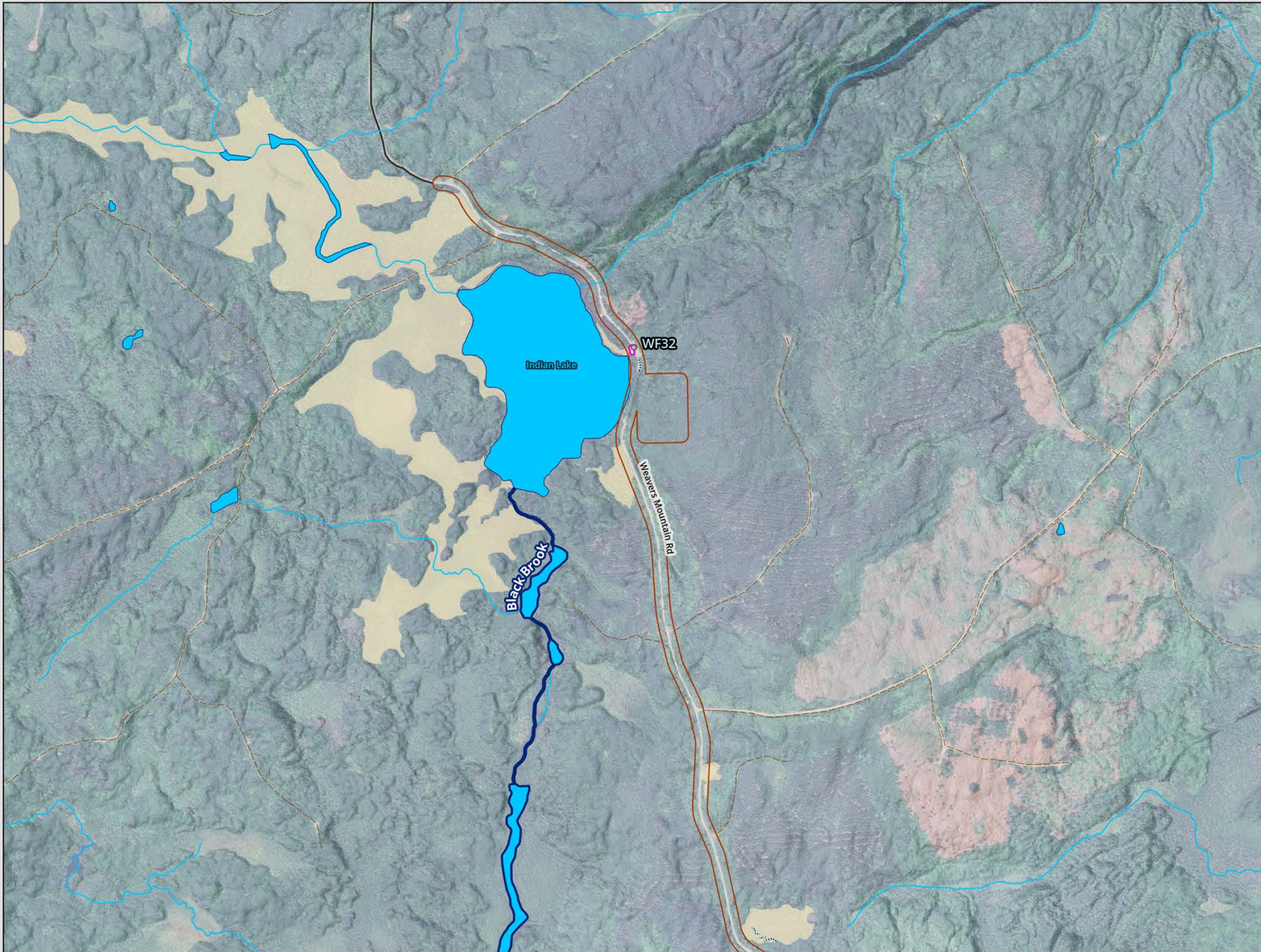
**SUGAR MAPLE  
WIND ENERGY PROJECT**

**Watercourse Assessment  
Results  
5 of 6**

DATE: 3/19/2026	PROJ N°: 251616	FIGURE: <b>7.7</b>
DRAWN BY: SF	CHECKED BY: MB	APPROVED: LH

NOTES:





- LEGEND**
- Assessed Watercourses**
- Watercourse*
- Small / Large Permanent Watercourse
  - Ephemeral / Intermittent Watercourse
- Drainage Channel*
- Drainage Channel
  - Watercourse Assessment Location
  - Potential Fish Bearing Watercourse
- Nova Scotia Hydrologic Network (NSTD, 2025)**
- Waterbody
  - Major Watercourse (Named)
  - Minor Watercourse (Unnamed)
  - WTG
  - Potential Development Area
  - Addressed Road (Major)
  - Trail / Resource Road / No Maintenance
  - Wetland (Delineated)



**SUGAR MAPLE  
WIND ENERGY PROJECT**

**Watercourse Assessment  
Results  
6 of 6**

DATE: 3/19/2026	PROJ N°: 251616	FIGURE: <b>7.8</b>
DRAWN BY: SF	CHECKED BY: MB	APPROVED: LH

NOTES:

