

- LEGEND**
- Completed Vegetation / Flora Survey Transect
  - Study Area
  - WTG
  - Potential Development Area
  - Addressed Road (Major)
  - Trail / Resource Road / No Maintenance

NOTES:

**CBCL**

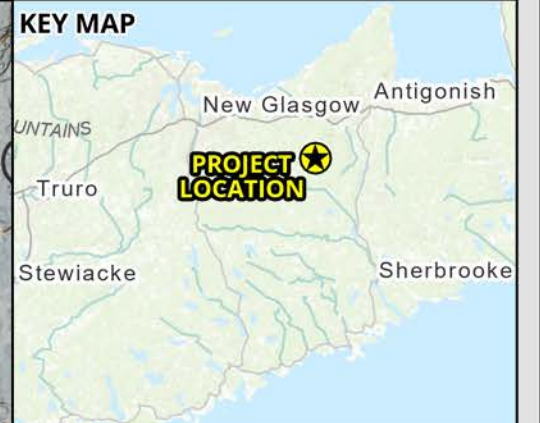
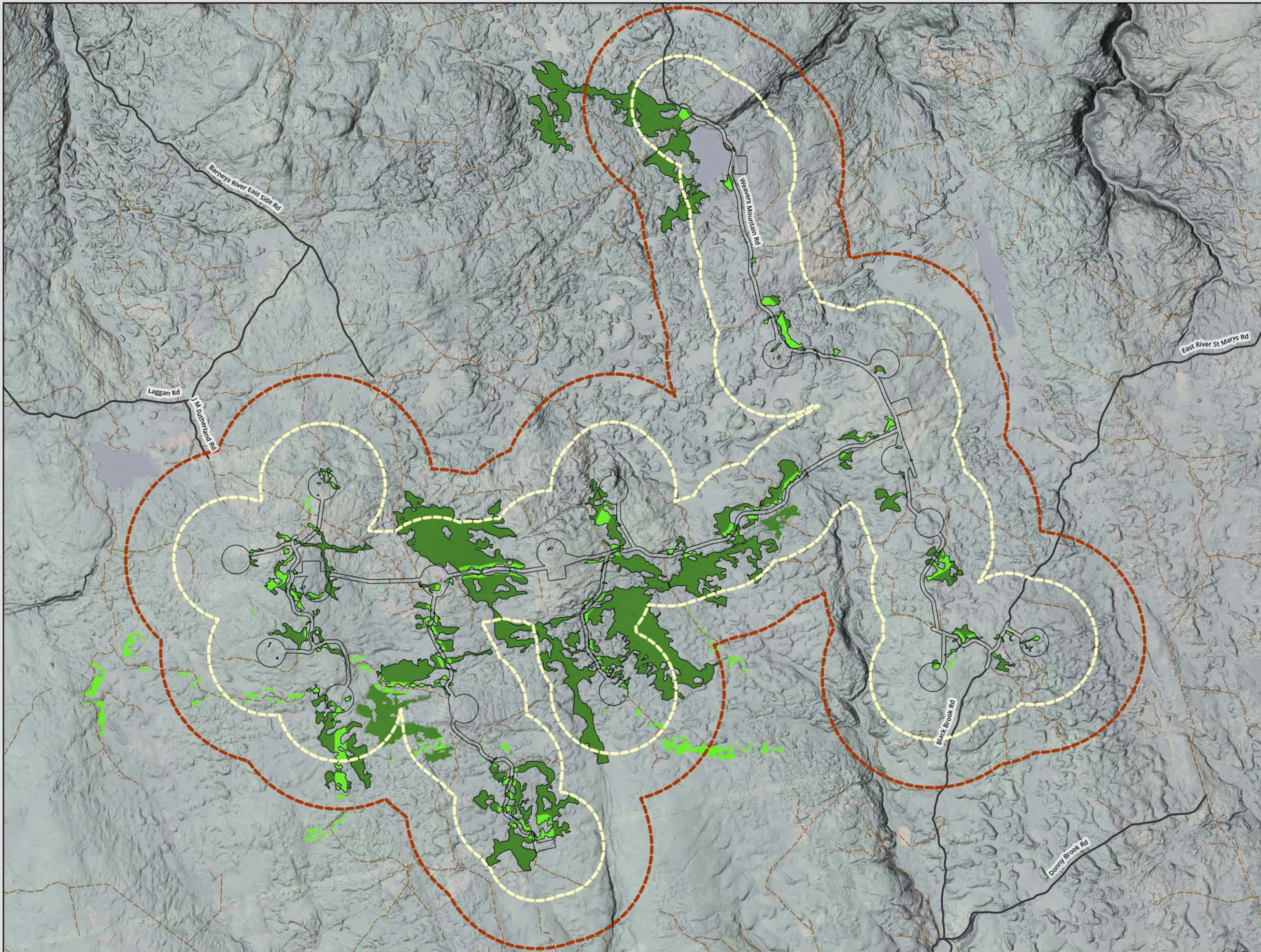
**SUGAR MAPLE  
WIND ENERGY PROJECT**

**Vegetation Survey  
Areas**

DATE: 3/19/2026	PROJ N°: 251616	FIGURE: <b>8.2</b>
DRAWN BY: SF	CHECKED BY: NM	APPROVED: NM

0 750 1,500 3,000 m

SCALE: 1:60,000 Coordinate System: NAD 1983 UTM Zone 20N  
Units: Meter



- LEGEND**
- Wetlands**
- Wetland
  - Field Delineated Wetland
  - Desktop Delineated Wetland
  - Regional Assessment Area (1km PDA Buffer)
  - Local Assessment Area (500m PDA Buffer)
  - Potential Development Area
  - Addressed Road (Major)
  - Trail / Resource Road / No Maintenance

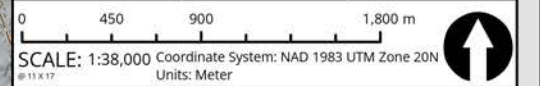
NOTES:

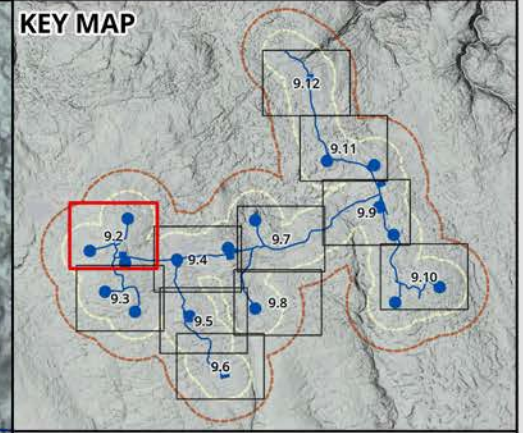
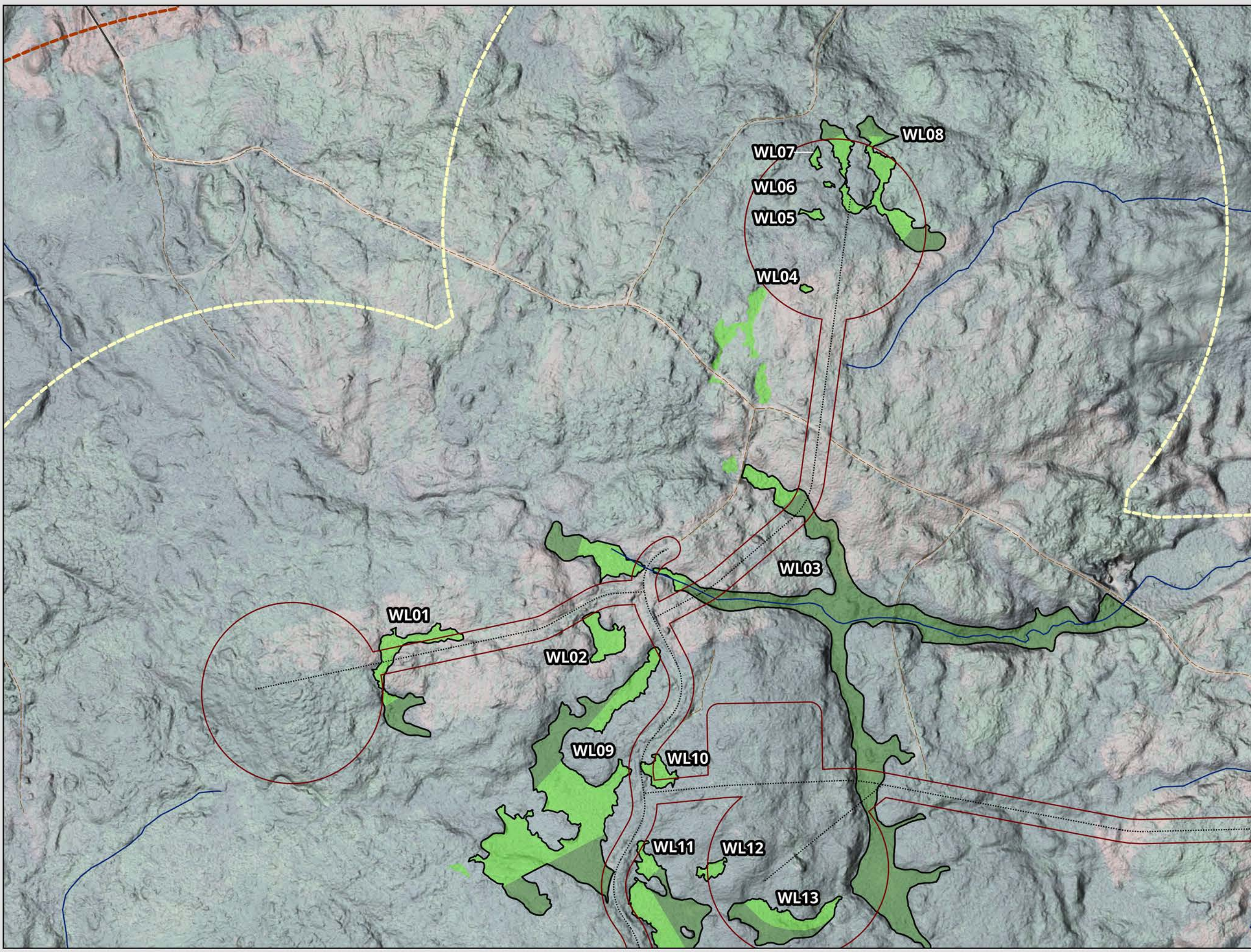


**SUGAR MAPLE  
WIND ENERGY PROJECT**

**Wetland Survey  
Overview**

DATE: 3/19/2026	PROJ N°: 251616	FIGURE: <b>9.1</b>
DRAWN BY: SF	CHECKED BY: NM	APPROVED: NM





**LEGEND**

**Wetland Surveys**

- Wetland
- Field Delineated Wetland
- Desktop Delineated Wetland

**Regional Assessment Area (1km PDA Buffer)**

**Local Assessment Area (500m PDA Buffer)**

**Potential Development Area**

**Addressed Road (Major)**

**Trail / Resource Road / No Maintenance**

**Hydrology**

- Watercourse (Unnamed)

NOTES:

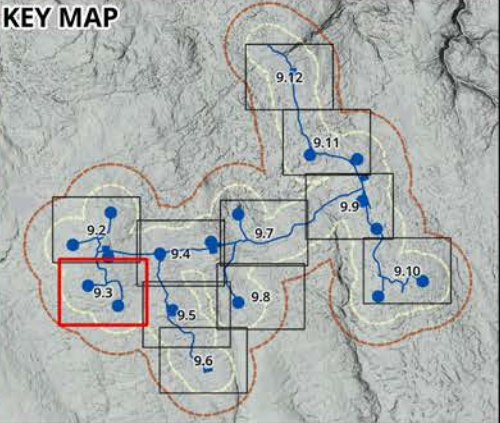
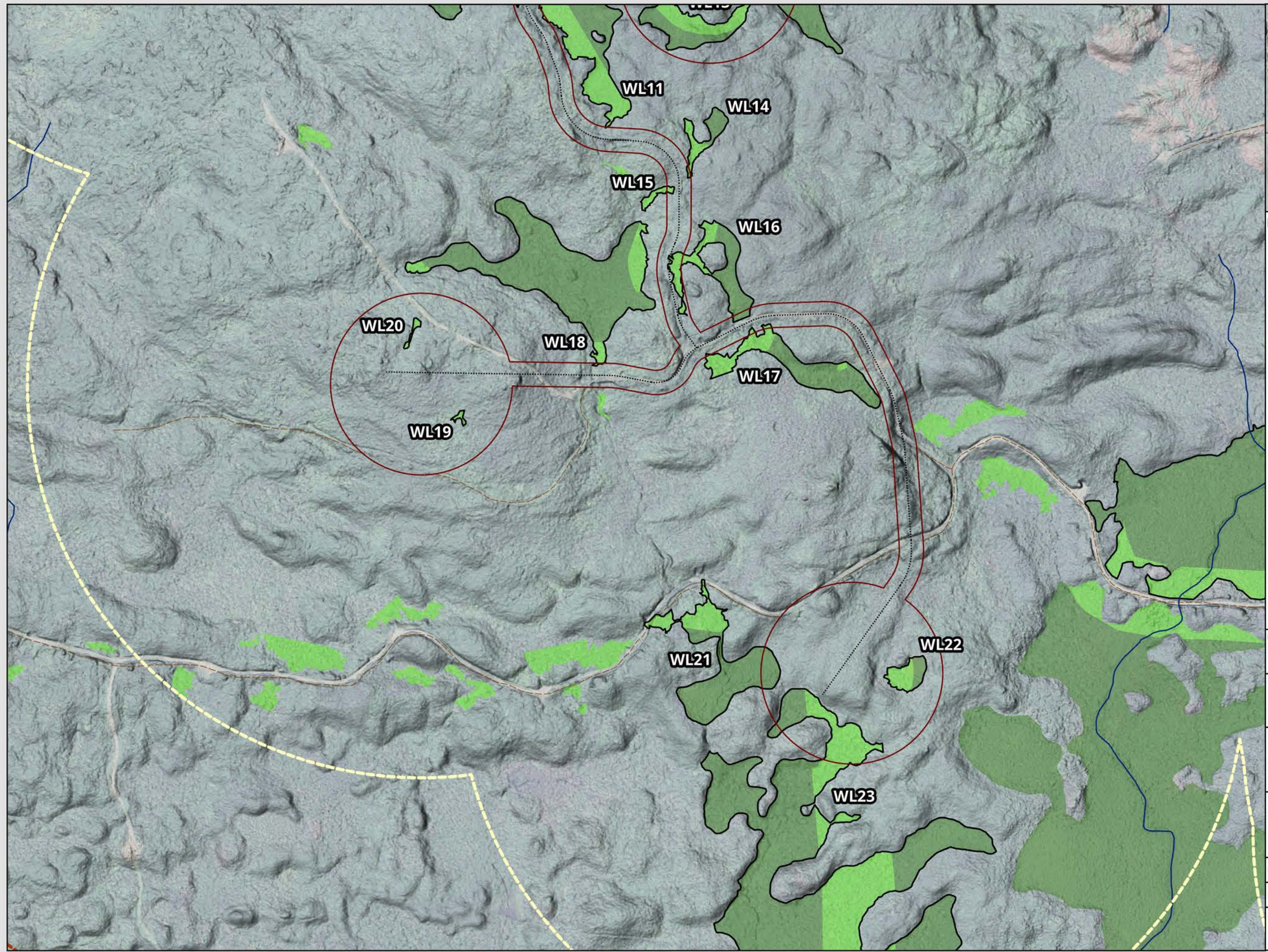
**CBCL**

SUGAR MAPLE  
WIND ENERGY PROJECT

**Wetland Delineations**  
1 of 11

DATE: 3/19/2026	PROJ N°: 251616	FIGURE: 9.2
DRAWN BY: SF	CHECKED BY: NM	APPROVED: NM
0 75 150 300 m SCALE: 1:6,000 Coordinate System: NAD 1983 UTM Zone 20N Units: Meter		





- LEGEND**
- Wetland Surveys**
- Wetland
  - Field Delineated Wetland
  - Desktop Delineated Wetland
  - Regional Assessment Area (1km PDA Buffer)
  - Local Assessment Area (500m PDA Buffer)
  - Potential Development Area
  - Trail / Resource Road / No Maintenance
- Hydrology**
- Watercourse (Unnamed)

NOTES:

**CBCL**

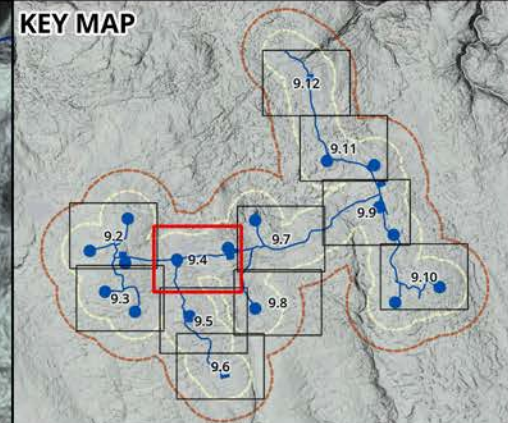
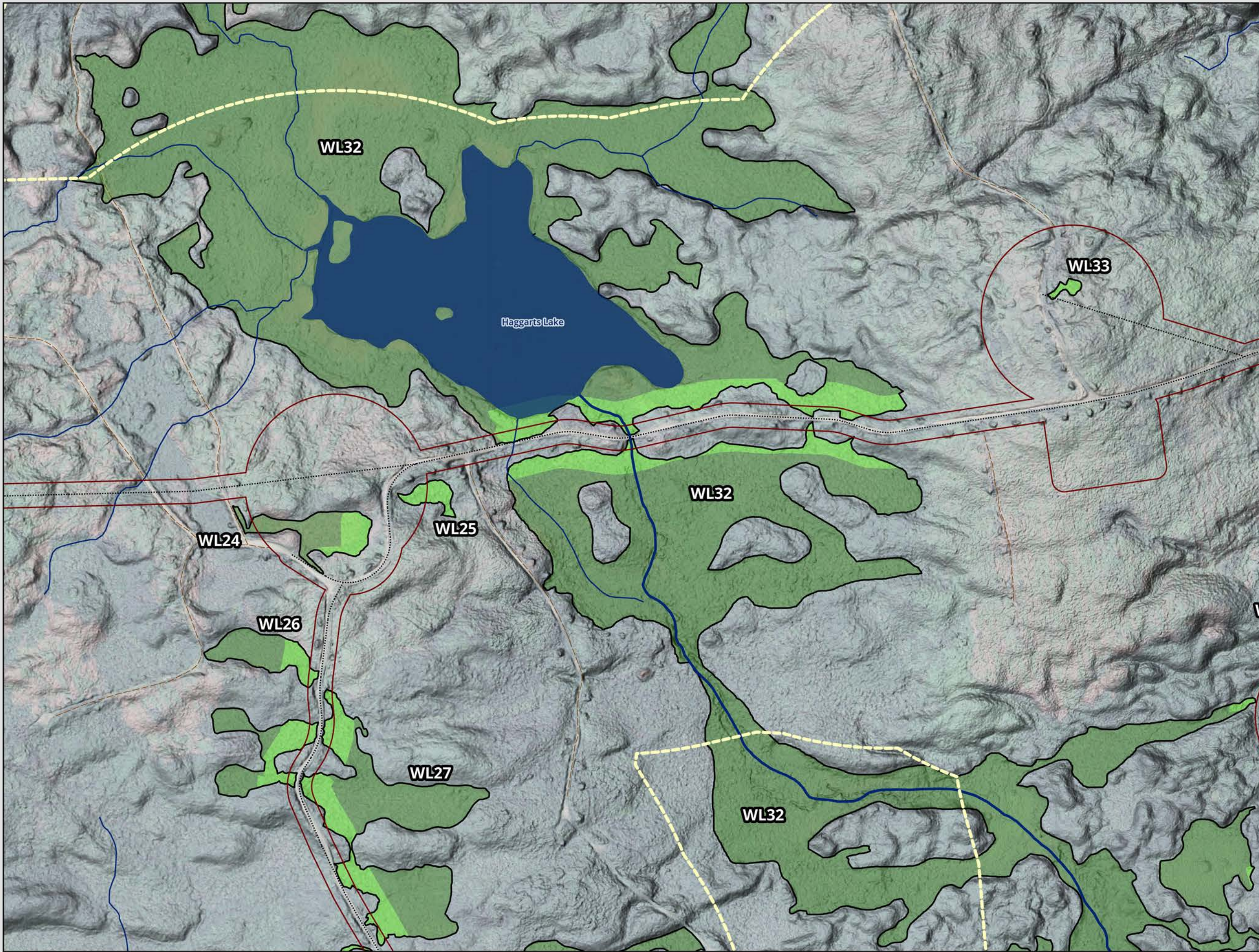
SUGAR MAPLE  
WIND ENERGY PROJECT

**Wetland Delineations**  
2 of 11

DATE: 3/19/2026	PROJ N°: 251616	FIGURE: <b>9.3</b>
DRAWN BY: SF	CHECKED BY: NM	APPROVED: NM

0 75 150 300 m

SCALE: 1:6,000 Coordinate System: NAD 1983 UTM Zone 20N  
Units: Meter



- LEGEND**
- Wetland Surveys**
- Wetland
  - Field Delineated Wetland
  - Desktop Delineated Wetland
  - Local Assessment Area (500m PDA Buffer)
  - Potential Development Area
  - Trail / Resource Road / No Maintenance
- Hydrology**
- Watercourse (Named)
  - Watercourse (Unnamed)
  - Waterbody

NOTES:

**CBCL**

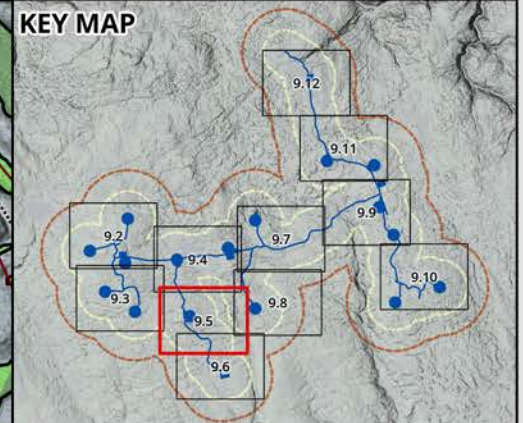
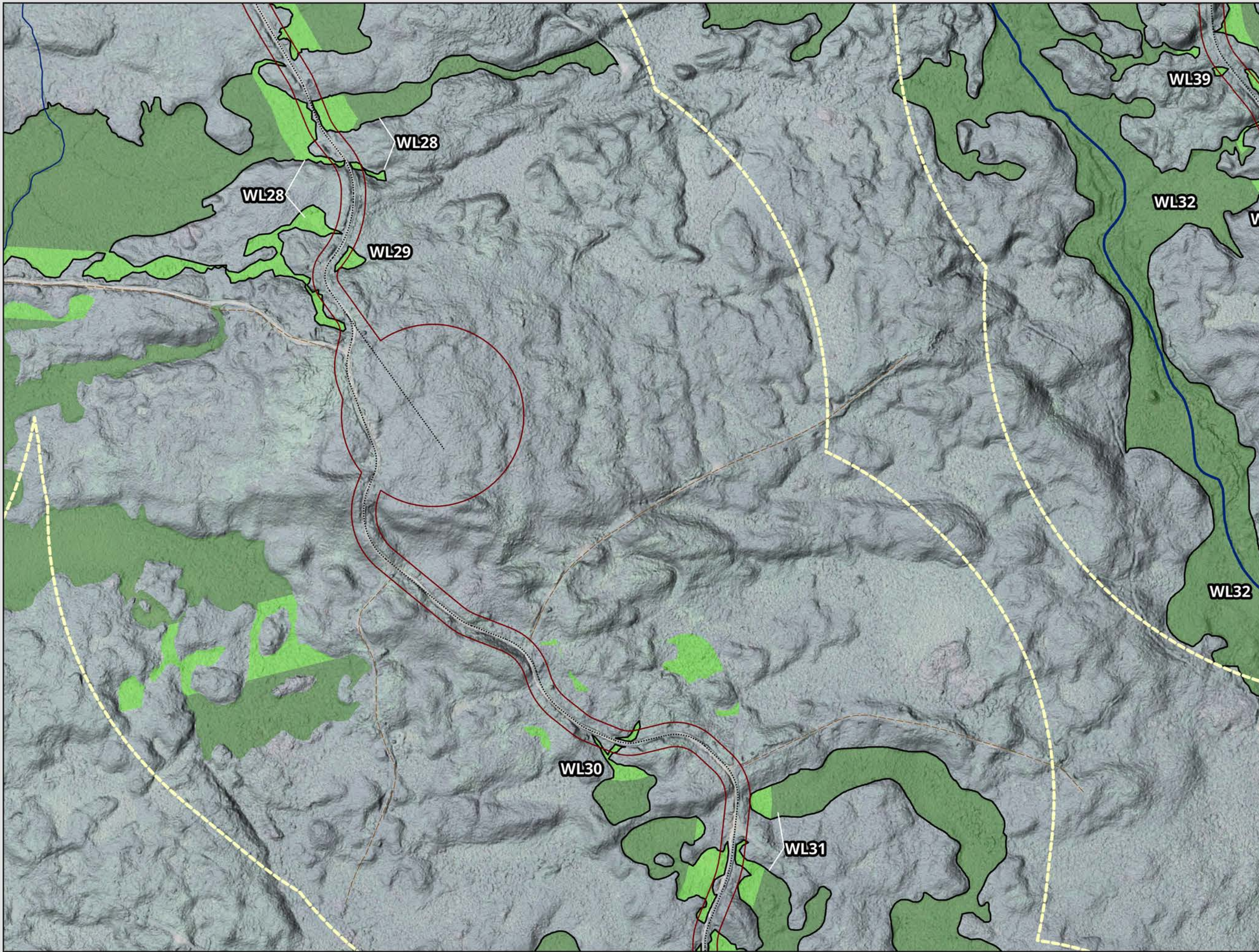
SUGAR MAPLE  
WIND ENERGY PROJECT

**Wetland Delineations**  
3 of 11

DATE: 3/19/2026	PROJ N°: 251616	FIGURE: <b>9.4</b>
DRAWN BY: SF	CHECKED BY: NM	APPROVED: NM

0 75 150 300 m

SCALE: 1:6,000 Coordinate System: NAD 1983 UTM Zone 20N  
Units: Meter



**LEGEND**

**Wetland Surveys**

- Wetland
- Field Delineated Wetland
- Desktop Delineated Wetland
- Local Assessment Area (500m PDA Buffer)
- Potential Development Area
- Trail / Resource Road / No Maintenance

**Hydrology**

- Watercourse (Named)
- Watercourse (Unnamed)

NOTES:

**CBCL**

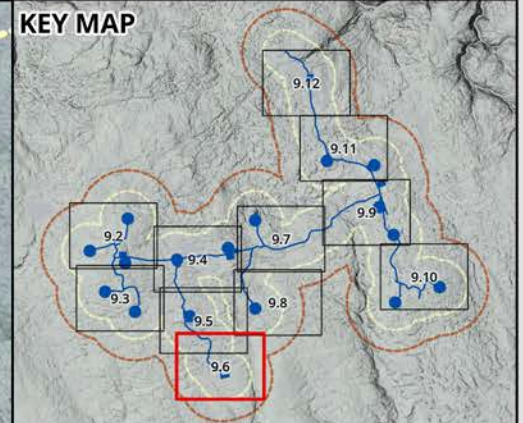
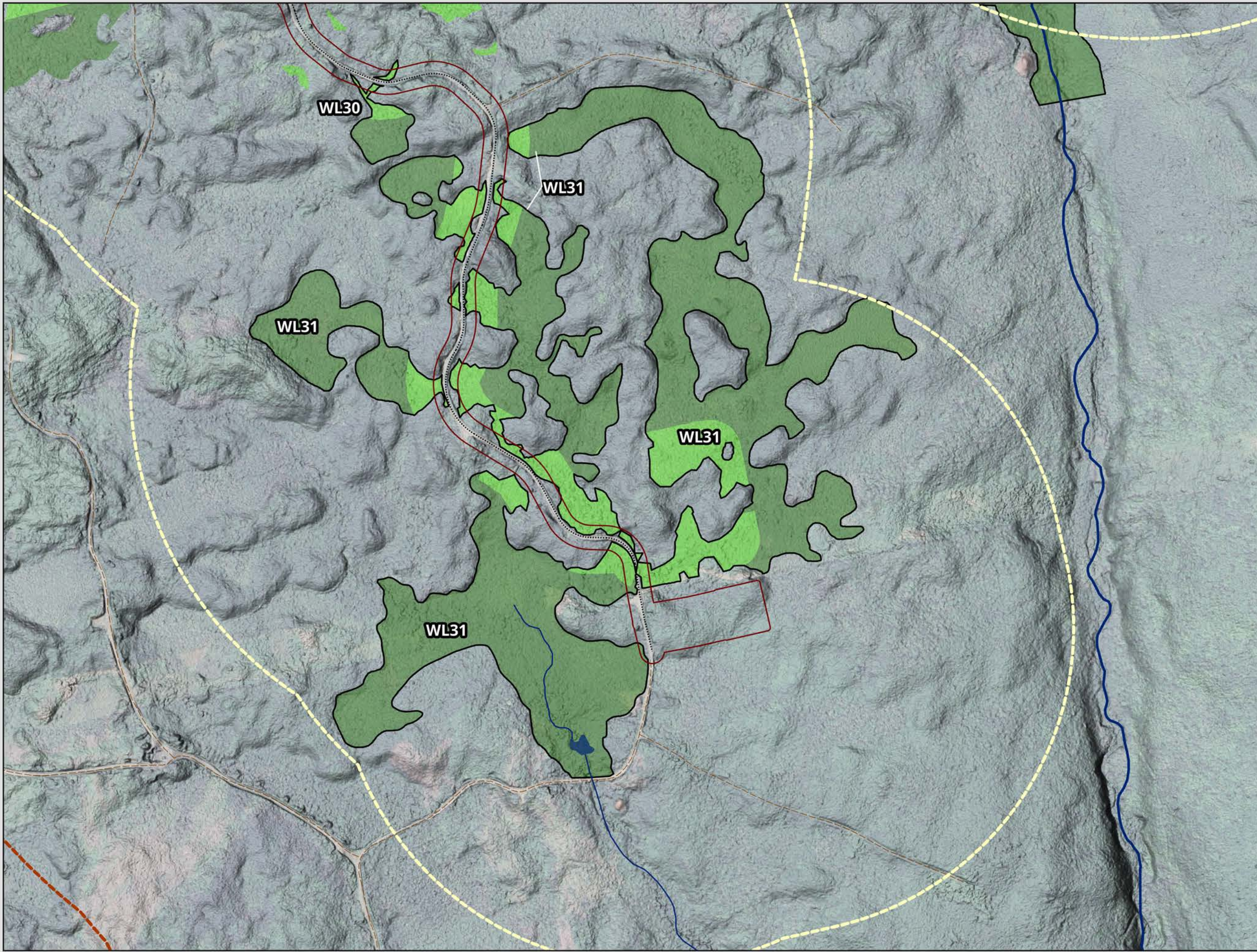
SUGAR MAPLE  
WIND ENERGY PROJECT

**Wetland Delineations**  
4 of 11

DATE: 3/19/2026	PROJ N°: 251616	FIGURE: <b>9.5</b>
DRAWN BY: SF	CHECKED BY: NM	APPROVED: NM

0 75 150 300 m

SCALE: 1:6,000 Coordinate System: NAD 1983 UTM Zone 20N  
Units: Meter



**LEGEND**

**Wetland Surveys**

- Wetland
- Field Delineated Wetland
- Desktop Delineated Wetland

**Regional Assessment Area (1km PDA Buffer)**

**Local Assessment Area (500m PDA Buffer)**

**Potential Development Area**

**Trail / Resource Road / No Maintenance**

**Hydrology**

- Watercourse (Named)
- Watercourse (Unnamed)
- Waterbody

NOTES:

**CBCL**

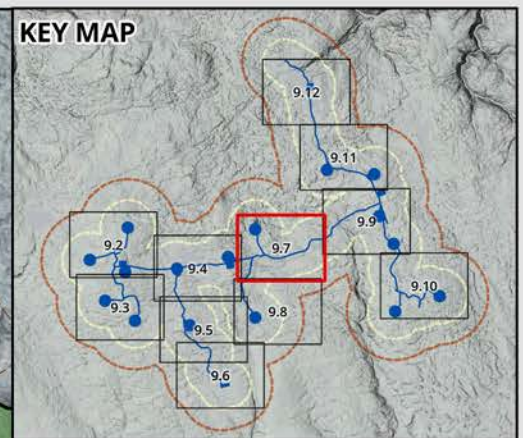
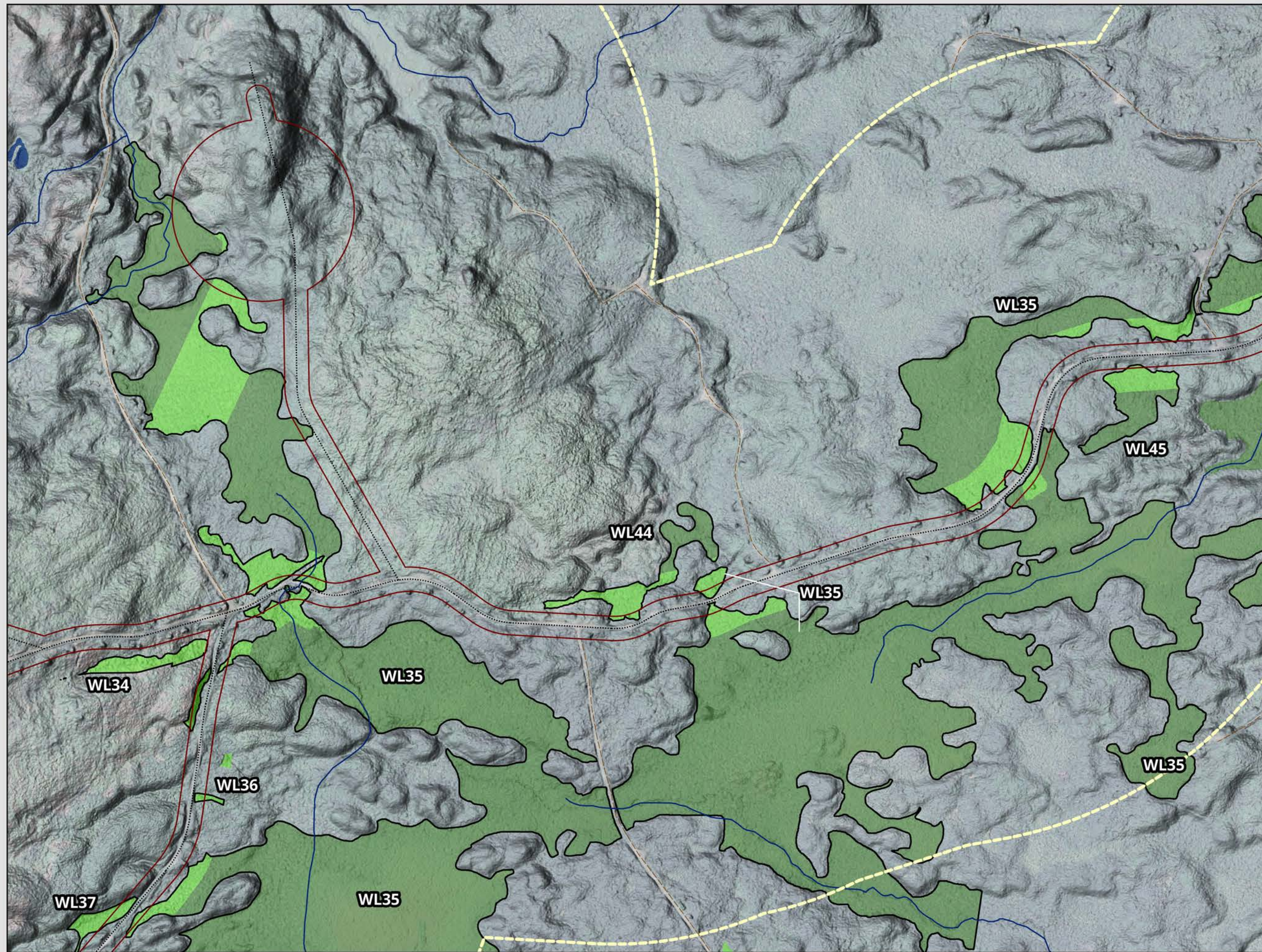
SUGAR MAPLE  
WIND ENERGY PROJECT

**Wetland Delineations**  
5 of 11

DATE: 3/19/2026	PROJ N°: 251616	FIGURE: <b>9.6</b>
DRAWN BY: SF	CHECKED BY: NM	APPROVED: NM

0 75 150 300 m

SCALE: 1:6,000 Coordinate System: NAD 1983 UTM Zone 20N  
Units: Meter



**LEGEND**

**Wetland Surveys**

- Wetland
- Field Delineated Wetland
- Desktop Delineated Wetland
- Local Assessment Area (500m PDA Buffer)
- Potential Development Area
- Trail / Resource Road / No Maintenance

**Hydrology**

- Watercourse (Unnamed)
- Waterbody

NOTES:

**CBCL**

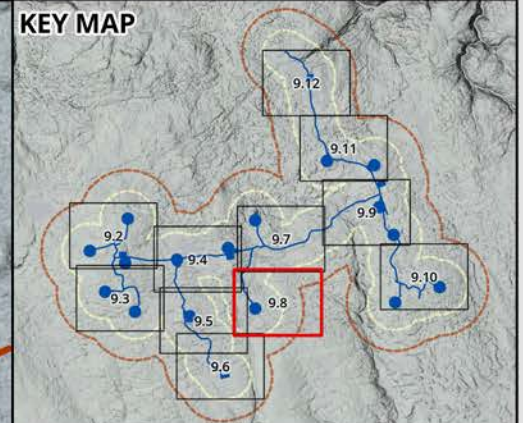
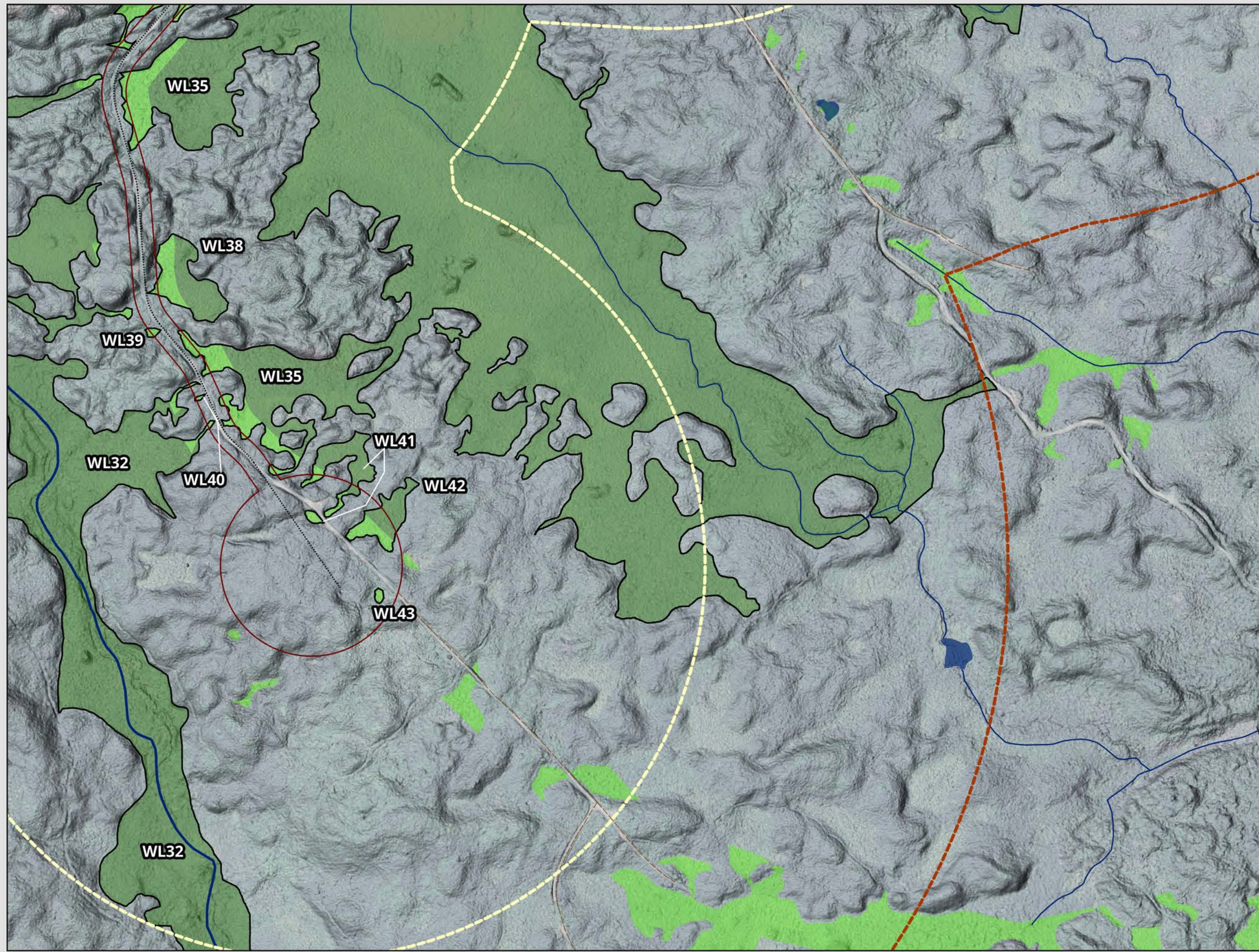
SUGAR MAPLE  
WIND ENERGY PROJECT

**Wetland Delineations**  
6 of 11

DATE: 3/19/2026	PROJ N°: 251616	FIGURE: <b>9.7</b>
DRAWN BY: SF	CHECKED BY: NM	APPROVED: NM

0 75 150 300 m

SCALE: 1:6,000 Coordinate System: NAD 1983 UTM Zone 20N  
Units: Meter



**LEGEND**

**Wetland Surveys**

- Wetland
- Field Delineated Wetland
- Desktop Delineated Wetland
- Regional Assessment Area (1km PDA Buffer)
- Local Assessment Area (500m PDA Buffer)
- Potential Development Area
- Trail / Resource Road / No Maintenance

**Hydrology**

- Watercourse (Named)
- Watercourse (Unnamed)
- Waterbody

NOTES:

**CBCL**

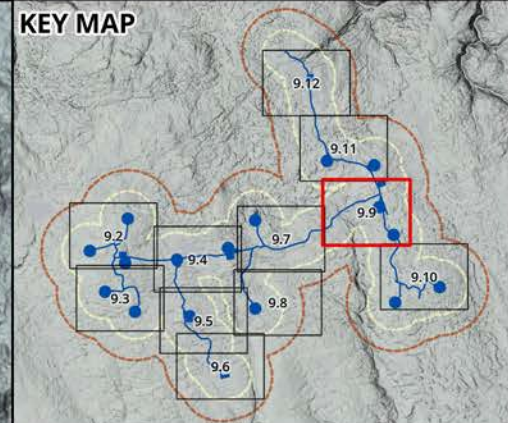
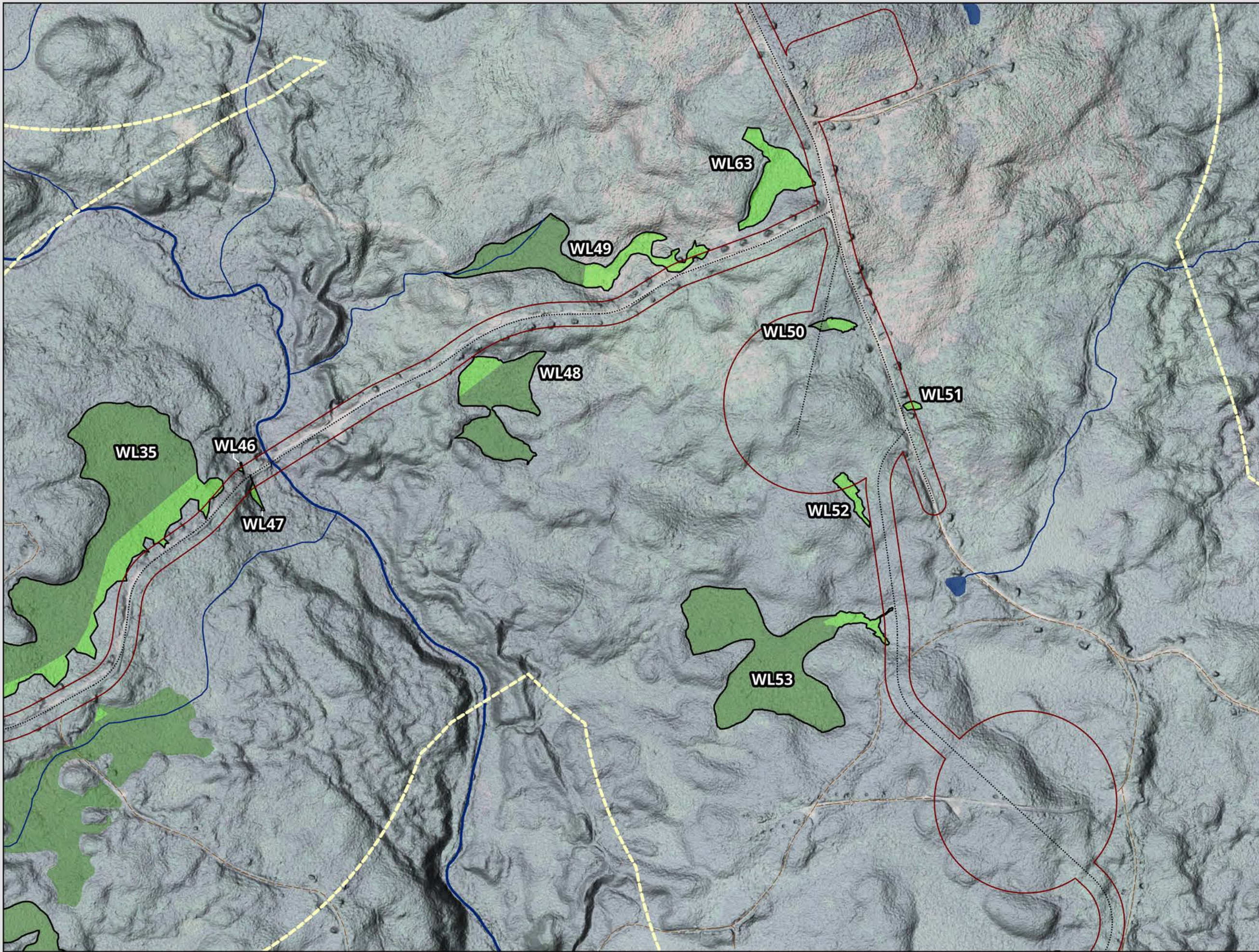
SUGAR MAPLE  
WIND ENERGY PROJECT

**Wetland Delineations**  
7 of 11

DATE: 3/19/2026	PROJ N°: 251616	FIGURE: <b>9.8</b>
DRAWN BY: SF	CHECKED BY: NM	APPROVED: NM

0 75 150 300 m

SCALE: 1:6,000 Coordinate System: NAD 1983 UTM Zone 20N  
Units: Meter



- LEGEND**
- Wetland Surveys**
- Wetland
  - Field Delineated Wetland
  - Desktop Delineated Wetland
  - Local Assessment Area (500m PDA Buffer)
  - Potential Development Area
  - Trail / Resource Road / No Maintenance
- Hydrology**
- Watercourse (Named)
  - Watercourse (Unnamed)
  - Waterbody

NOTES:



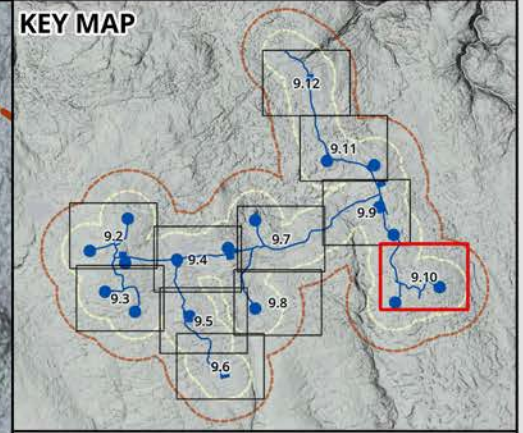
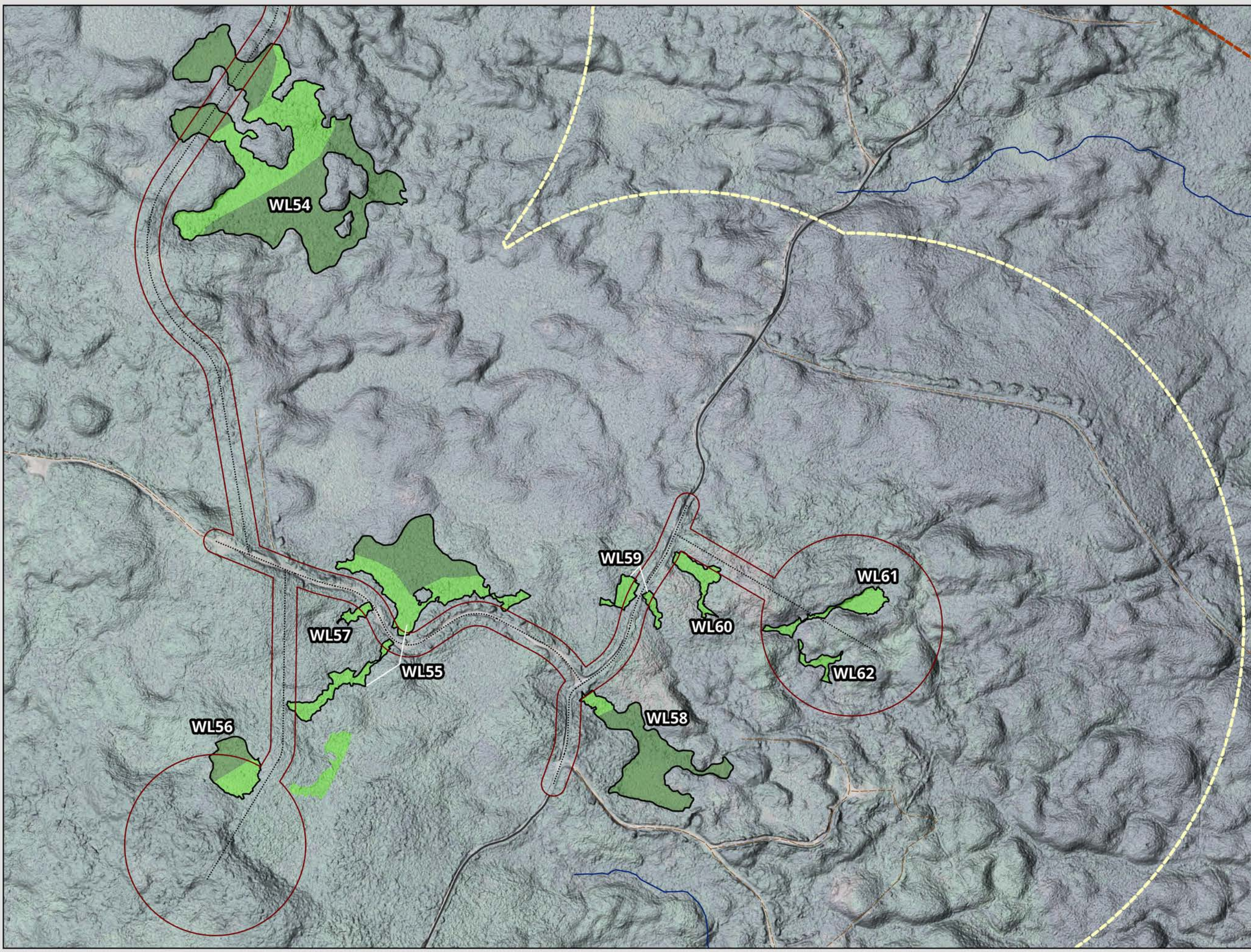
SUGAR MAPLE  
WIND ENERGY PROJECT

**Wetland Delineations**  
8 of 11

DATE: 3/19/2026	PROJ N°: 251616	FIGURE: <b>9.9</b>
DRAWN BY: SF	CHECKED BY: NM	APPROVED: NM

0 75 150 300 m

SCALE: 1:6,000 Coordinate System: NAD 1983 UTM Zone 20N  
Units: Meter



**LEGEND**

**Wetland Surveys**

- Wetland
- Field Delineated Wetland
- Desktop Delineated Wetland
- Regional Assessment Area (1km PDA Buffer)
- Local Assessment Area (500m PDA Buffer)
- Potential Development Area
- Addressed Road (Major)
- Trail / Resource Road / No Maintenance

**Hydrology**

- Watercourse (Unnamed)

NOTES:

**CBCL**

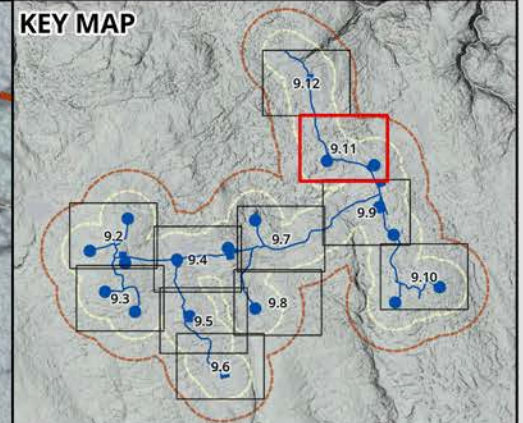
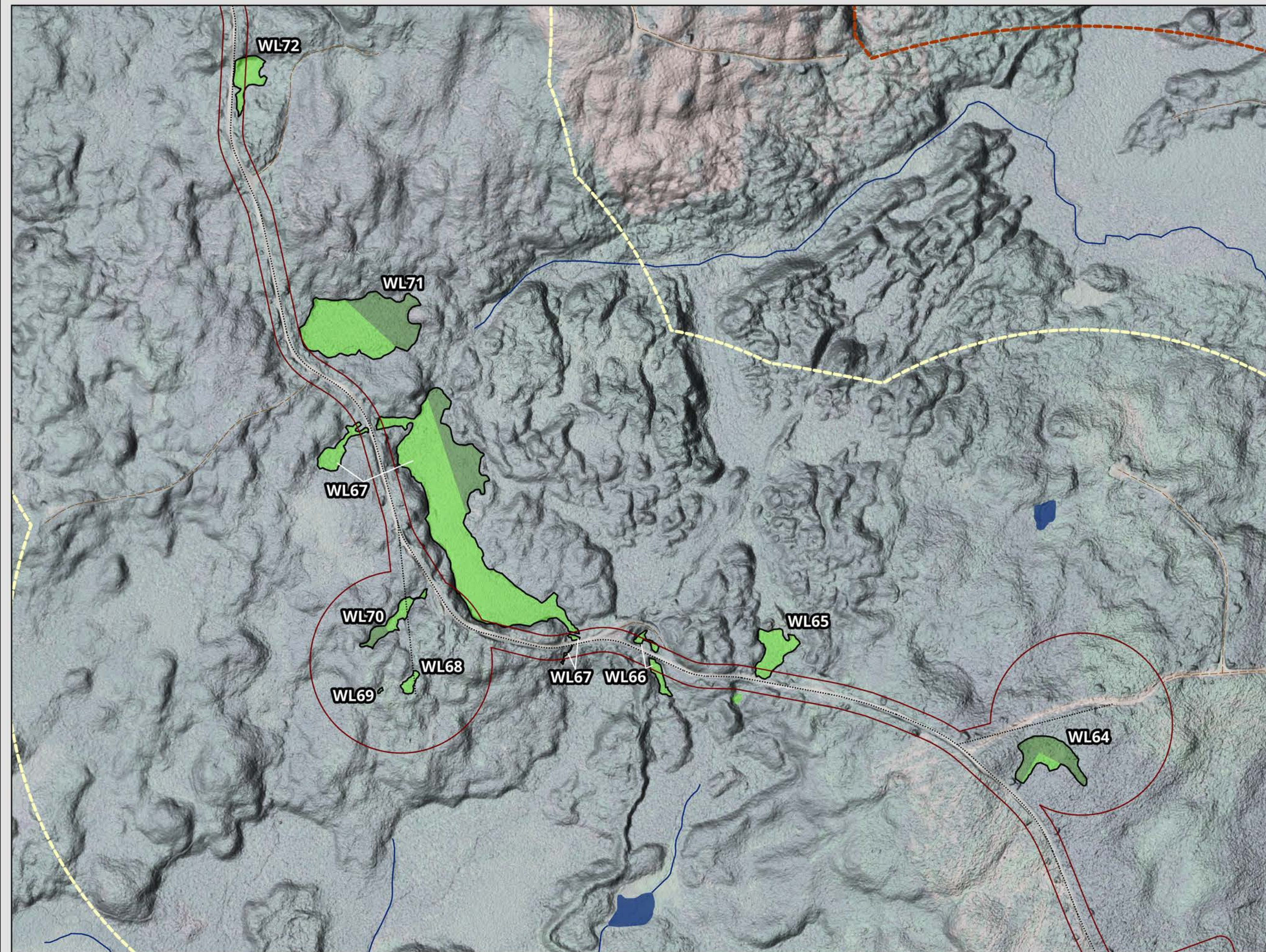
SUGAR MAPLE  
WIND ENERGY PROJECT

**Wetland Delineations**  
9 of 11

DATE: 3/19/2026	PROJ N°: 251616	FIGURE: <b>9.10</b>
DRAWN BY: SF	CHECKED BY: NM	APPROVED: NM

0 75 150 300 m

SCALE: 1:6,000 Coordinate System: NAD 1983 UTM Zone 20N  
Units: Meter



**LEGEND**

**Wetland Surveys**

- Wetland
  - Field Delineated Wetland
  - Desktop Delineated Wetland
- Regional Assessment Area (1km PDA Buffer)
- Local Assessment Area (500m PDA Buffer)
- Potential Development Area
- Trail / Resource Road / No Maintenance

**Hydrology**

- Watercourse (Unnamed)
- Waterbody

NOTES:

**CBCL**

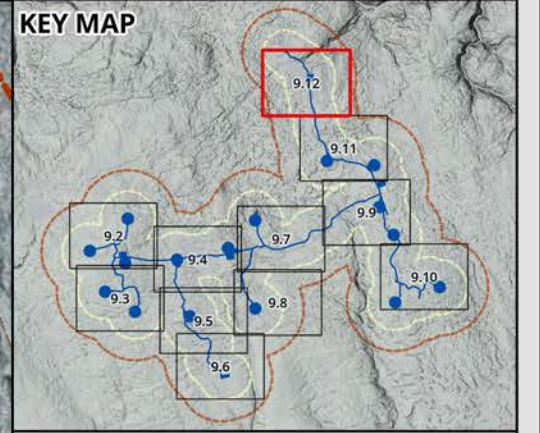
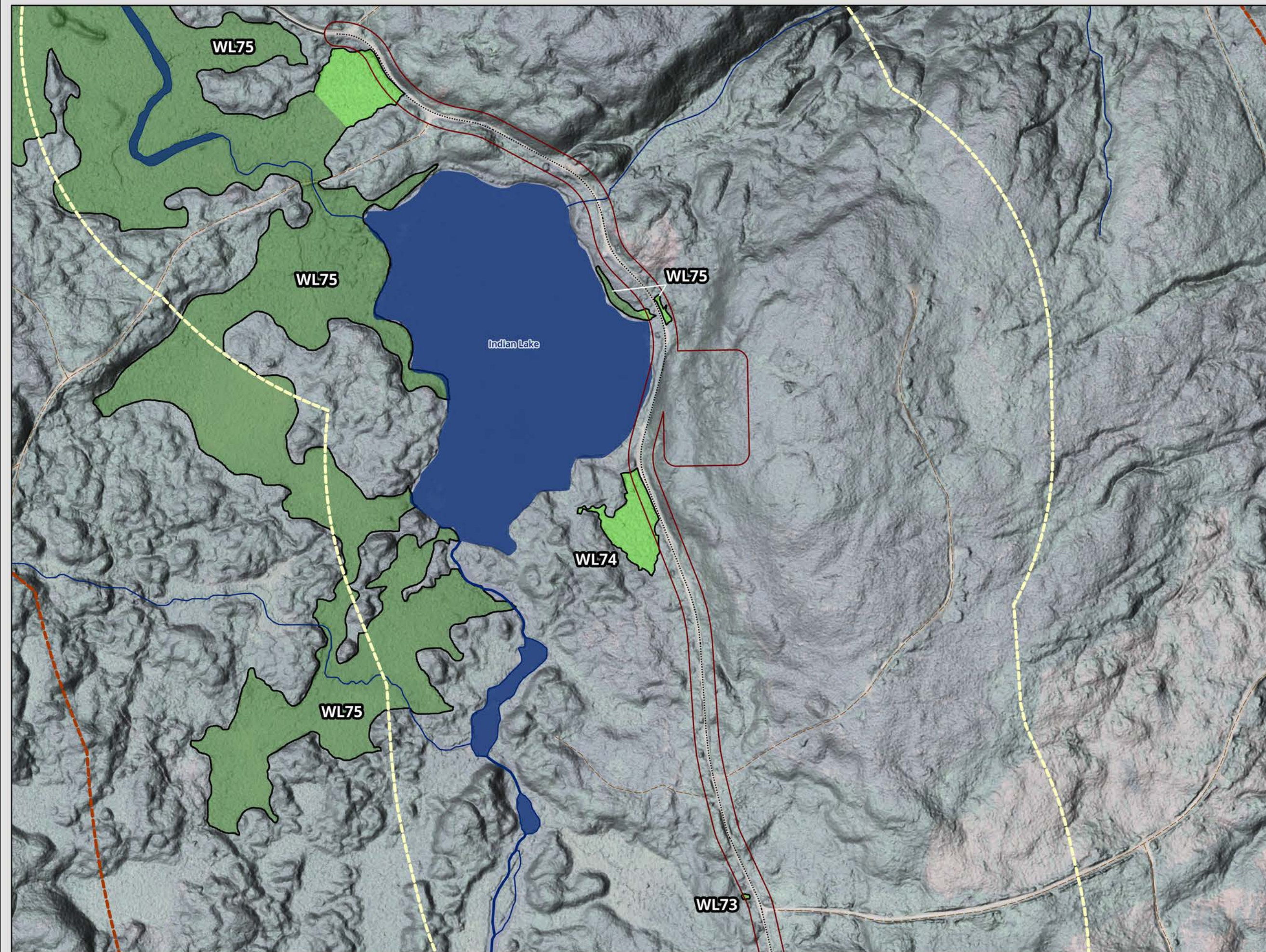
SUGAR MAPLE  
WIND ENERGY PROJECT

**Wetland Delineations**  
10 of 11

DATE: 3/19/2026	PROJ N°: 251616	FIGURE: 9.11
DRAWN BY: SF	CHECKED BY: NM	APPROVED: NM

0 75 150 300 m

SCALE: 1:6,000 Coordinate System: NAD 1983 UTM Zone 20N  
Units: Meter



**LEGEND**

**Wetland Surveys**

- Wetland
- Field Delineated Wetland
- Desktop Delineated Wetland
- Regional Assessment Area (1km PDA Buffer)
- Local Assessment Area (500m PDA Buffer)
- Potential Development Area
- Addressed Road (Major)
- Trail / Resource Road / No Maintenance

**Hydrology**

- Watercourse (Named)
- Watercourse (Unnamed)
- Waterbody

NOTES:

**CBCL**

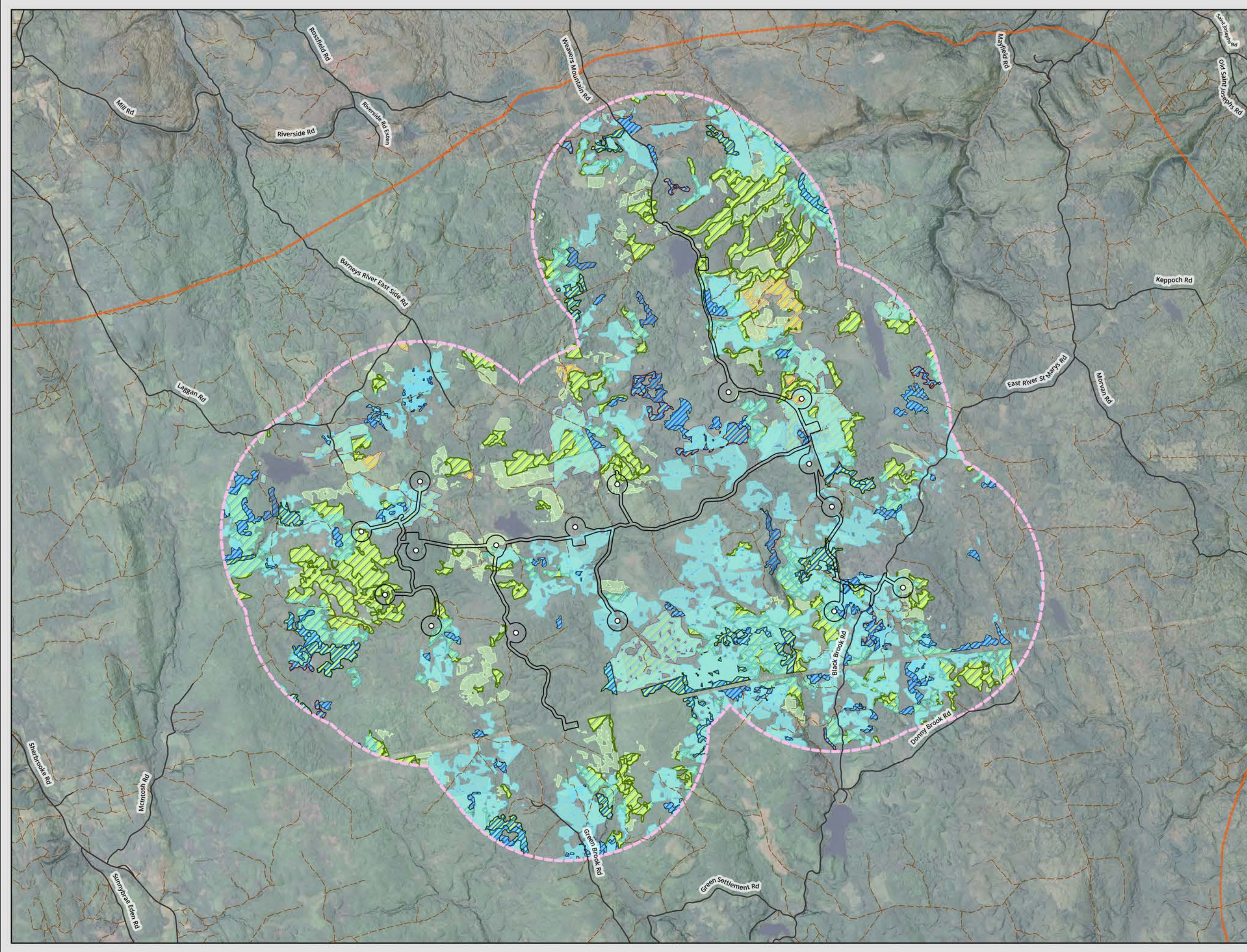
SUGAR MAPLE  
WIND ENERGY PROJECT

**Wetland Delineations**  
11 of 11

DATE: 3/19/2026	PROJ N°: 251616	FIGURE: 9.12
DRAWN BY: SF	CHECKED BY: NM	APPROVED: NM

0 75 150 300 m

SCALE: 1:6,000 Coordinate System: NAD 1983 UTM Zone 20N  
Units: Meter



- LEGEND**
- WTG
  - ▭ Potential Development Area (PDA)
  - ▬ Addressed Road (Major)
  - ▬ Trail / Resource Road / No Maintenance
  - ▭ Local Assessment Area (2km PDA Buffer)
  - ▭ Study Area
- Moose Habitat Suitability Analysis**
- ▨ Winter Cover
  - ▨ Winter Forage
  - ▨ Summer Cover
  - ▨ Summer Forage
  - ▨ Calving Area

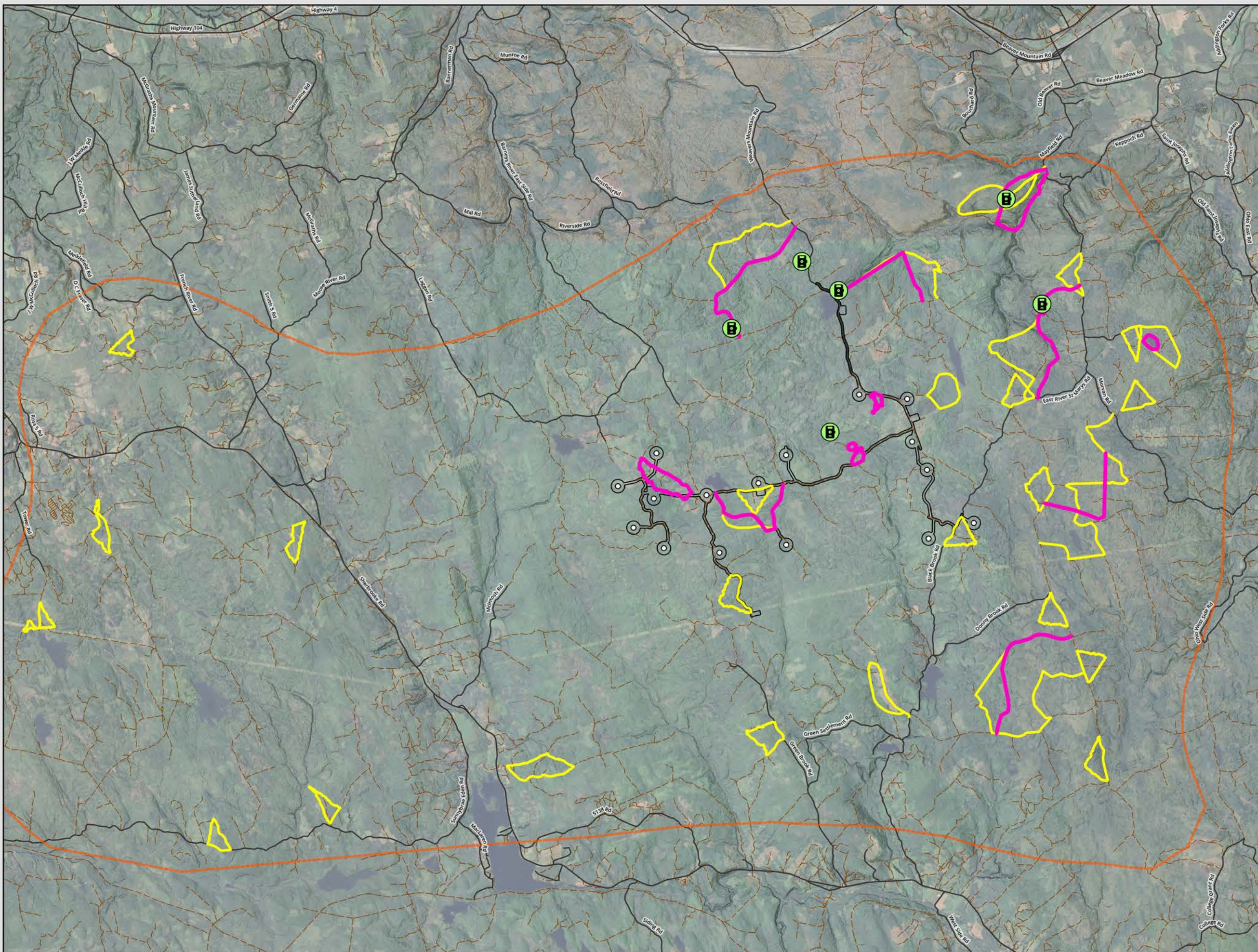


**SUGAR MAPLE  
WIND ENERGY PROJECT**

**Moose Habitat  
Suitability Analysis**

DATE: 3/19/2026	PROJ N°: 251616	FIGURE: 10.1
DRAWN BY: MC	CHECKED BY: NM	APPROVED: NM
0 500 1,000 2,000 m SCALE: 1:55,000 Coordinate System: NAD 1983 UTM Zone 20N Units: Meter		





- LEGEND**
- Study Area
  - WTG
  - Potential Development Area
  - Addressed Road (Major)
  - Trail / Resource Road / No Maintenance
  - Moose Winter Survey Transect
  - Moose PGI Survey Transect
  - Trail Cam Location

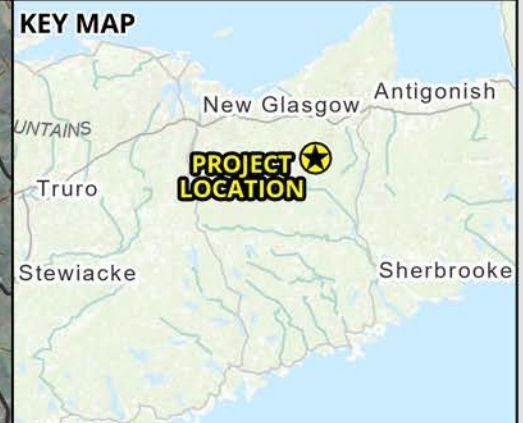
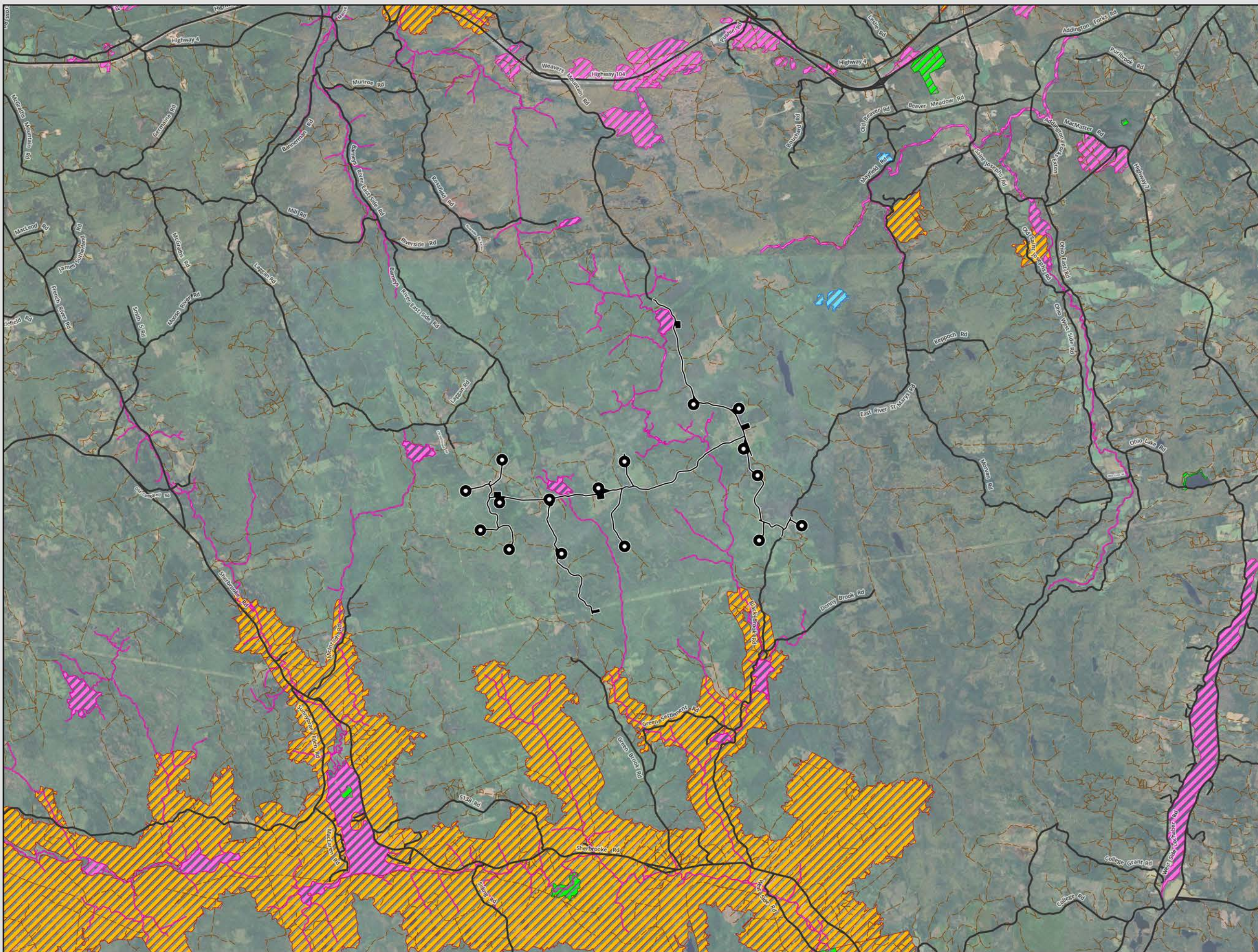
**CBCL**

**SUGAR MAPLE  
WIND ENERGY PROJECT**

**Terrestrial Wildlife  
Surveys**

DATE: 3/19/2026	PROJ N°: 251616	FIGURE: <b>10.2</b>
DRAWN BY: MC	CHECKED BY: NM	APPROVED: NM
<p>0 1,000 2,000 4,000 m</p> <p>SCALE: 1:85,000 Coordinate System: NAD 1983 UTM Zone 20N Units: Meter</p>		





- LEGEND**
- WTG
  - Potential Development Area
- Significant Habitats (NSDNR, November 2025)**
- Deer Wintering Area
  - Other Habitat
  - Species of Concern
  - Species at Risk



**SUGAR MAPLE WIND POWER PROJECT**

**Nova Scotia Significant Habitats Database**

DATE: 3/19/2026	PROJ N°: 251616	FIGURE: <b>10.3</b>
DRAWN BY: SF	CHECKED BY: NM	APPROVED: NM

NOTES:

0 1,000 2,000 4,000 m

SCALE: 1:90,000 Coordinate System: NAD 1983 UTM Zone 20N Units: Meter