

- LEGEND**
- Acoustic Recording Unit Location
  - Study Area
  - WTG
  - Potential Development Area
  - Addressed Road (Major)
  - Trail / Resource Road / No Maintenance

**CBCL**

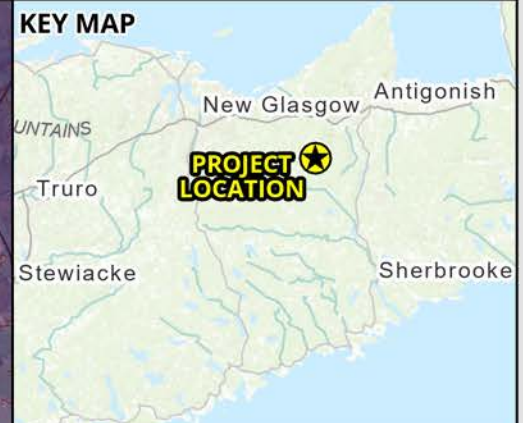
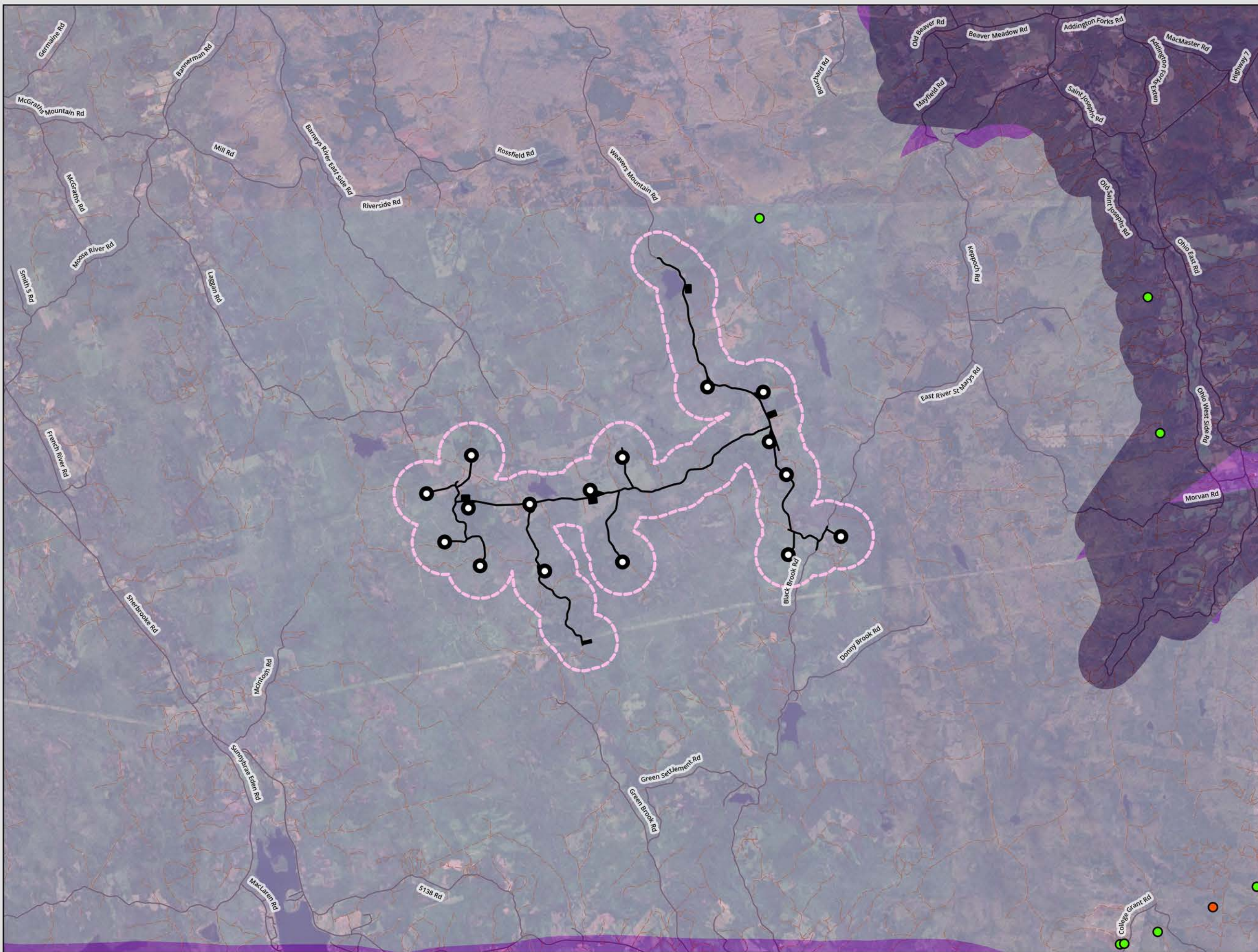
**SUGAR MAPLE  
WIND ENERGY PROJECT**

**Bat Surveys**

DATE: 3/19/2026	PROJ N°: 251616	FIGURE: <b>11.1</b>
DRAWN BY: SF	CHECKED BY: NM	APPROVED: NM

0 875 1,750 3,500 m

SCALE: 1:73,000 Coordinate System: NAD 1983 UTM Zone 20N  
Units: Meter



- ### LEGEND
- WTG
  - Potential Development Area
  - ▭ Local Assessment Area
- #### Abandoned Mine Openings
- No Existing Depth
  - Existing Depth
- #### Karst Risk
- Area of Low Karst Risk
  - Area of Medium Karst Risk
  - Area of High Karst Risk
- Addressed Road (Major)
  - Trail / Resource Road / No Maintenance

**SUGAR MAPLE  
WIND ENERGY PROJECT**

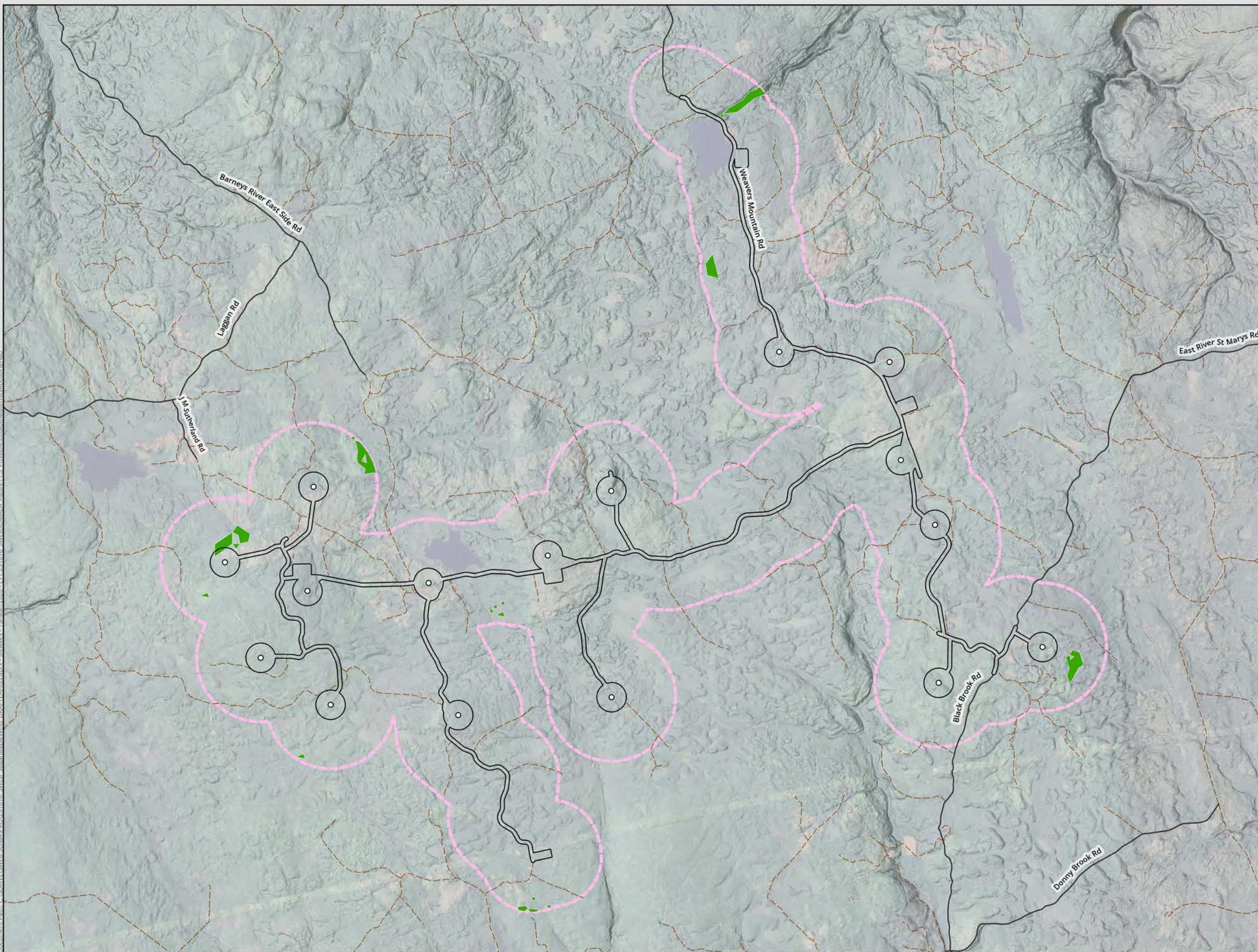
### Significant Bat Features

DATE: 3/19/2026	PROJ N°: 251616	FIGURE: <b>11.2</b>
DRAWN BY: SF	CHECKED BY: NM	APPROVED: NM

0 875 1,750 3,500 m

SCALE: 1:73,000 Coordinate System: NAD 1983 UTM Zone 20N  
Units: Meter

Document Path: C:\SDRIVES\WEB\SUMAPRO\251616\_SWEB\_SugarMapleWind\_DBA\TEARIGS.aprx - sfwkes - 19/May/2026 - 11:27:51 AM - 11:27:51 AM - SWEBSUMAPRO - Final 11.3 - Possibilities for Bat Maternity Roosting Hab



- LEGEND**
- Possible Suitable Bat Maternity Roosting Habitat
  - WTG
  - Potential Development Area
  - Addressed Road (Major)
  - Trail / Resource Road / No Maintenance
  - Local Assessment Area (500m PDA Buffer)

NOTES:

**CBCL**

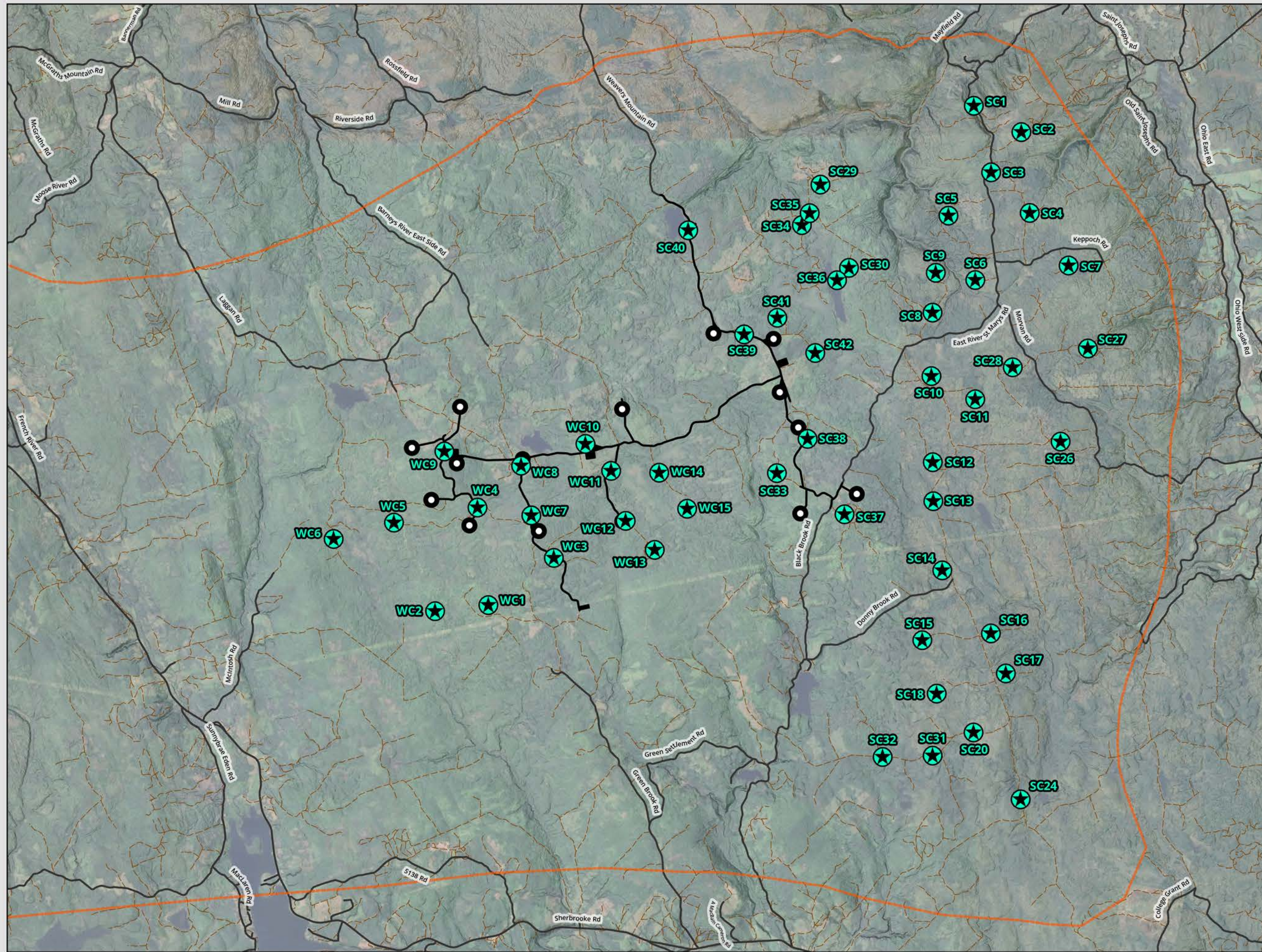
**SUGAR MAPLE  
WIND ENERGY PROJECT**

**Habitat Suitability Model:  
Bats**

DATE: 3/19/2026	PROJ N°: 251616	FIGURE: <b>11.3</b>
DRAWN BY: MC	CHECKED BY: NM	APPROVED: NM

0 450 900 1,800 m

SCALE: 1:37,000 Coordinate System: NAD 1983 UTM Zone 20N  
Units: Meter



- LEGEND**
- Winter Bird Survey Location
  - Study Area
  - Turbine Location
  - Potential Development Area
  - Addressed Road (Major)
  - Trail / Resource Road / No Maintenance

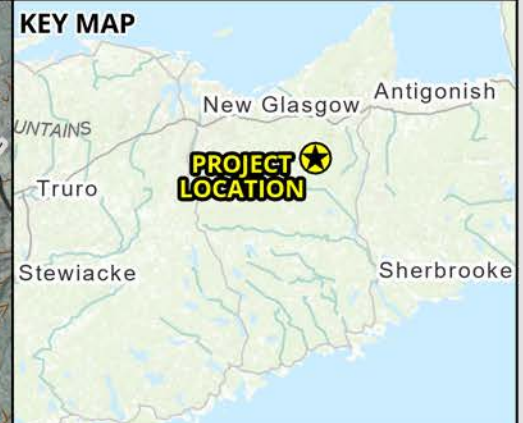
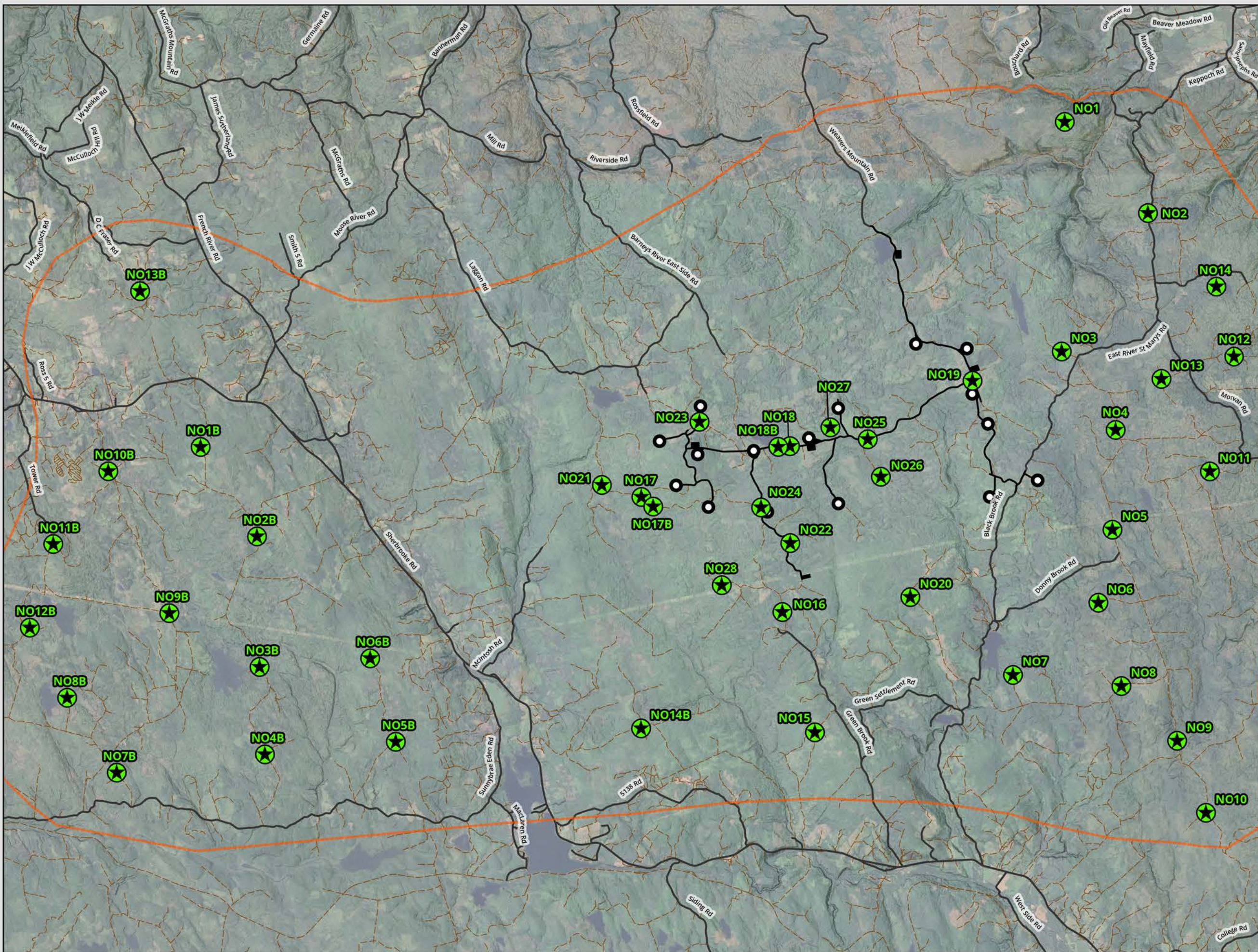
NOTES:

**CBCL**

SUGAR MAPLE  
WIND ENERGY PROJECT

**Winter Bird Surveys**

DATE: 3/19/2026	PROJ N°: 251616	FIGURE: <b>12.1</b>
DRAWN BY: MC	CHECKED BY: NM	APPROVED: NM
<p>0 750 1,500 3,000 m</p> <p>SCALE: 1:68,000 Coordinate System: NAD 1983 UTM Zone 20N Units: Meter</p>		



- LEGEND**
- Owl Survey Location
  - Study Area
  - WTG
  - Potential Development Area
  - Addressed Road (Major)
  - Trail / Resource Road / No Maintenance

NOTES:

**CBCL**

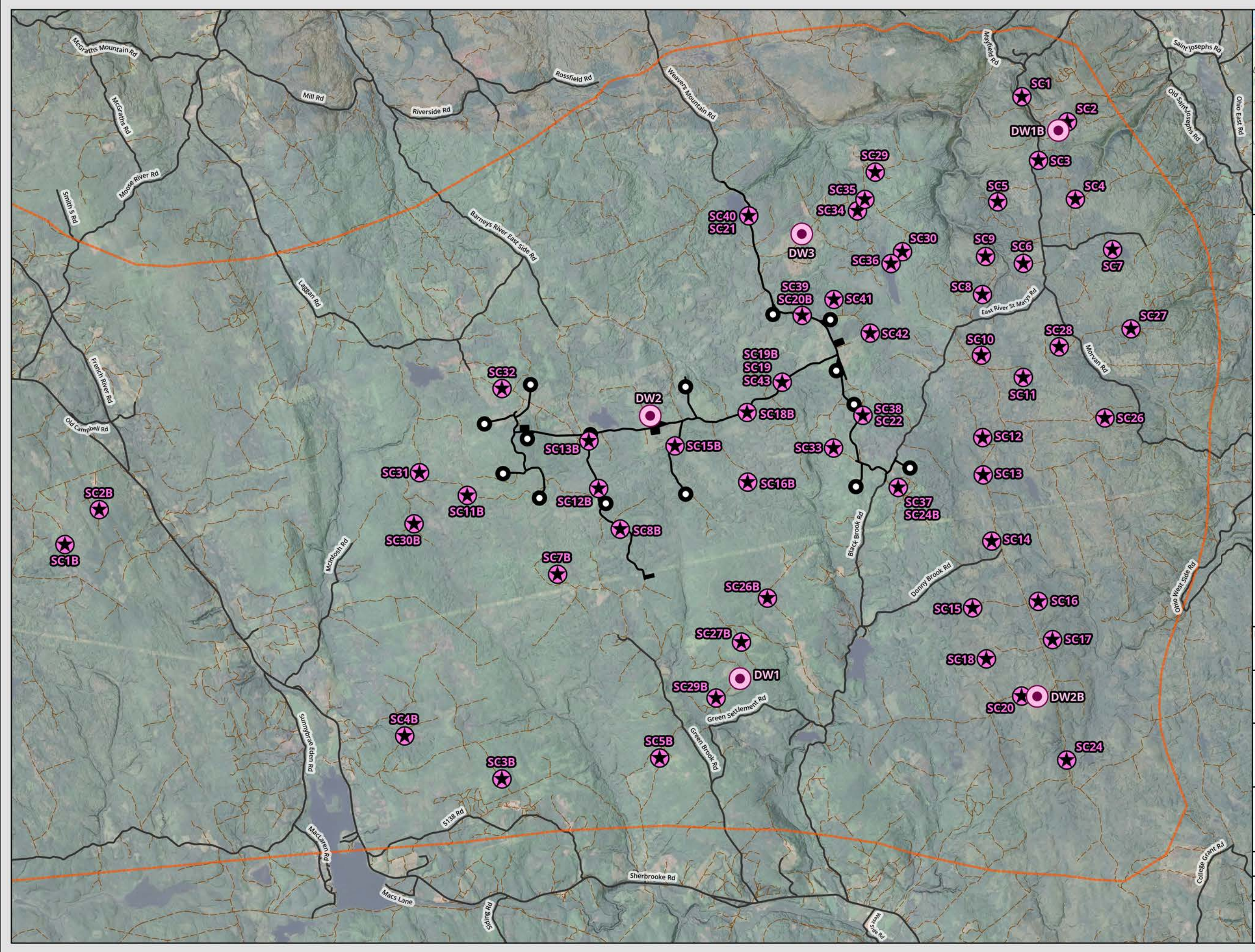
SUGAR MAPLE  
WIND ENERGY PROJECT

**Nocturnal Owl Surveys**

DATE: 3/19/2026	PROJ N°: 251616	FIGURE: <b>12.2</b>
DRAWN BY: MC	CHECKED BY: NM	APPROVED: NM

0 1,000 2,000 4,000 m

SCALE: 1:80,000 Coordinate System: NAD 1983 UTM Zone 20N  
Units: Meter



- LEGEND**
- Spring Migratory Bird Survey Location
  - Spring Passage Migration Survey Location
  - Study Area
  - WTG
  - Potential Development Area
  - Addressed Road (Major)
  - Trail / Resource Road / No Maintenance

NOTES:

**CBCL**

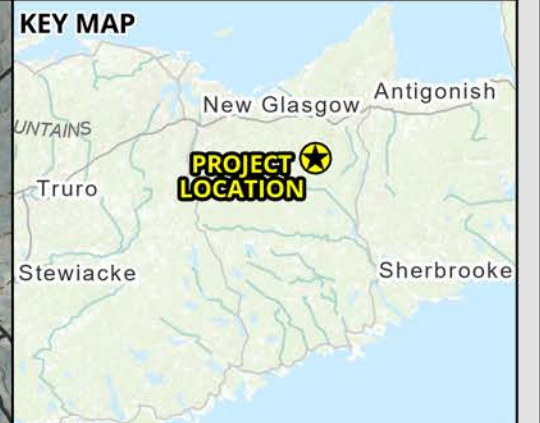
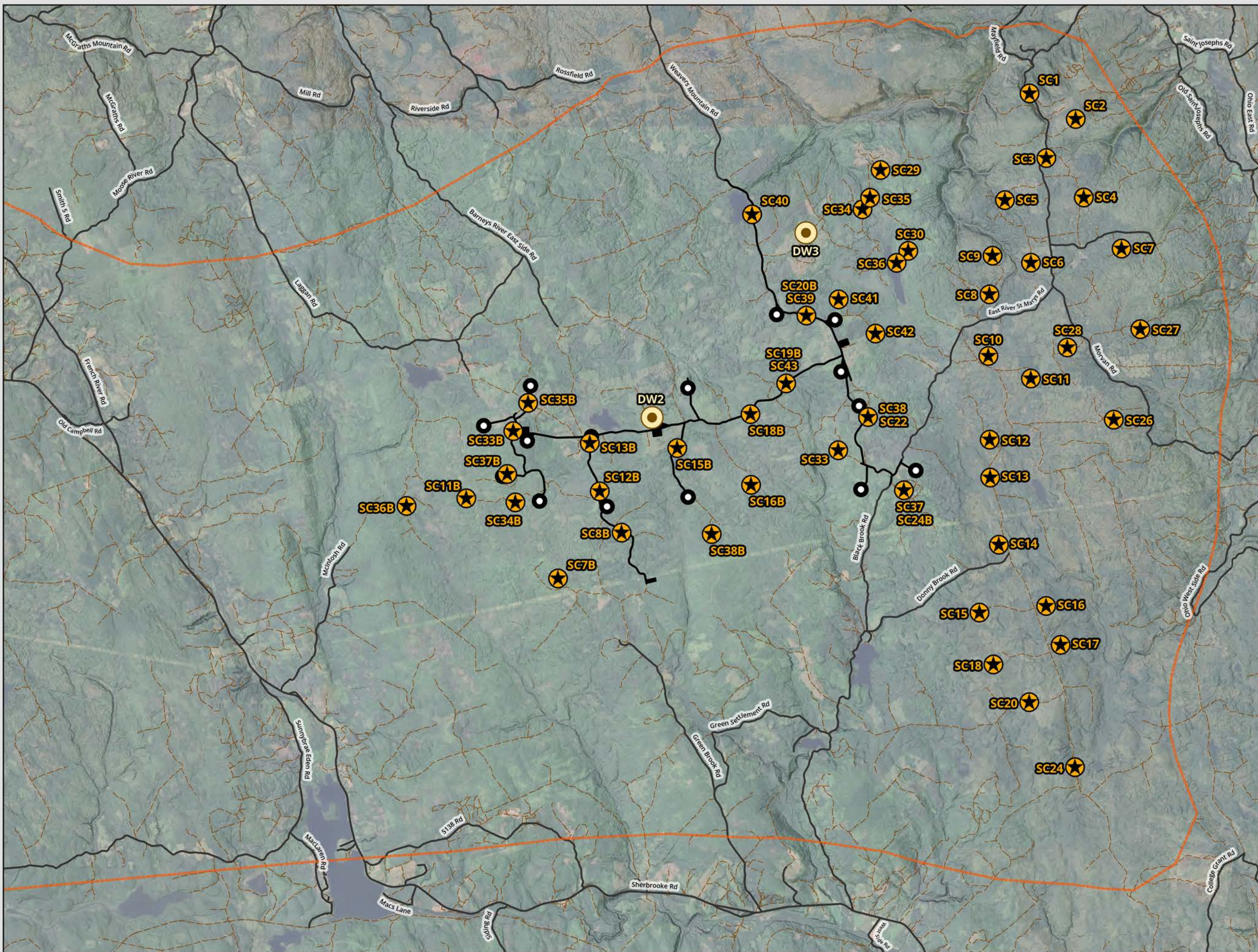
**SUGAR MAPLE  
WIND ENERGY PROJECT**

**Spring Migration  
Bird Surveys**

DATE: 3/19/2026	PROJ N°: 251616	FIGURE: <b>12.3</b>
DRAWN BY: MC	CHECKED BY: NM	APPROVED: NM

0 875 1,750 3,500 m

SCALE: 1:70,000 Coordinate System: NAD 1983 UTM Zone 20N  
Units: Meter



- LEGEND**
- Fall Migratory Bird Survey Location
  - Fall Passage Migration Survey Location
  - Study Area
  - WTG
  - Potential Development Area
  - Addressed Road (Major)
  - Trail / Resource Road / No Maintenance

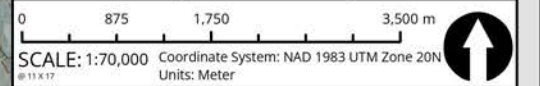
NOTES:

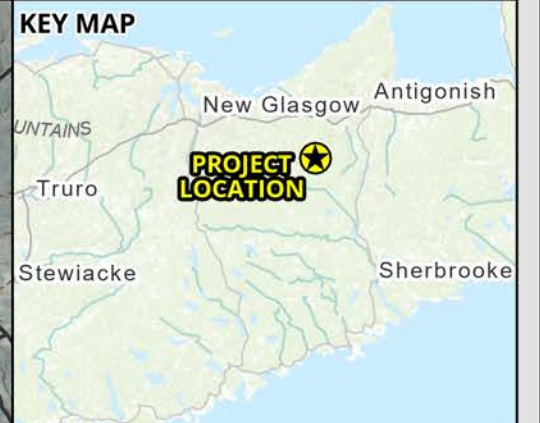
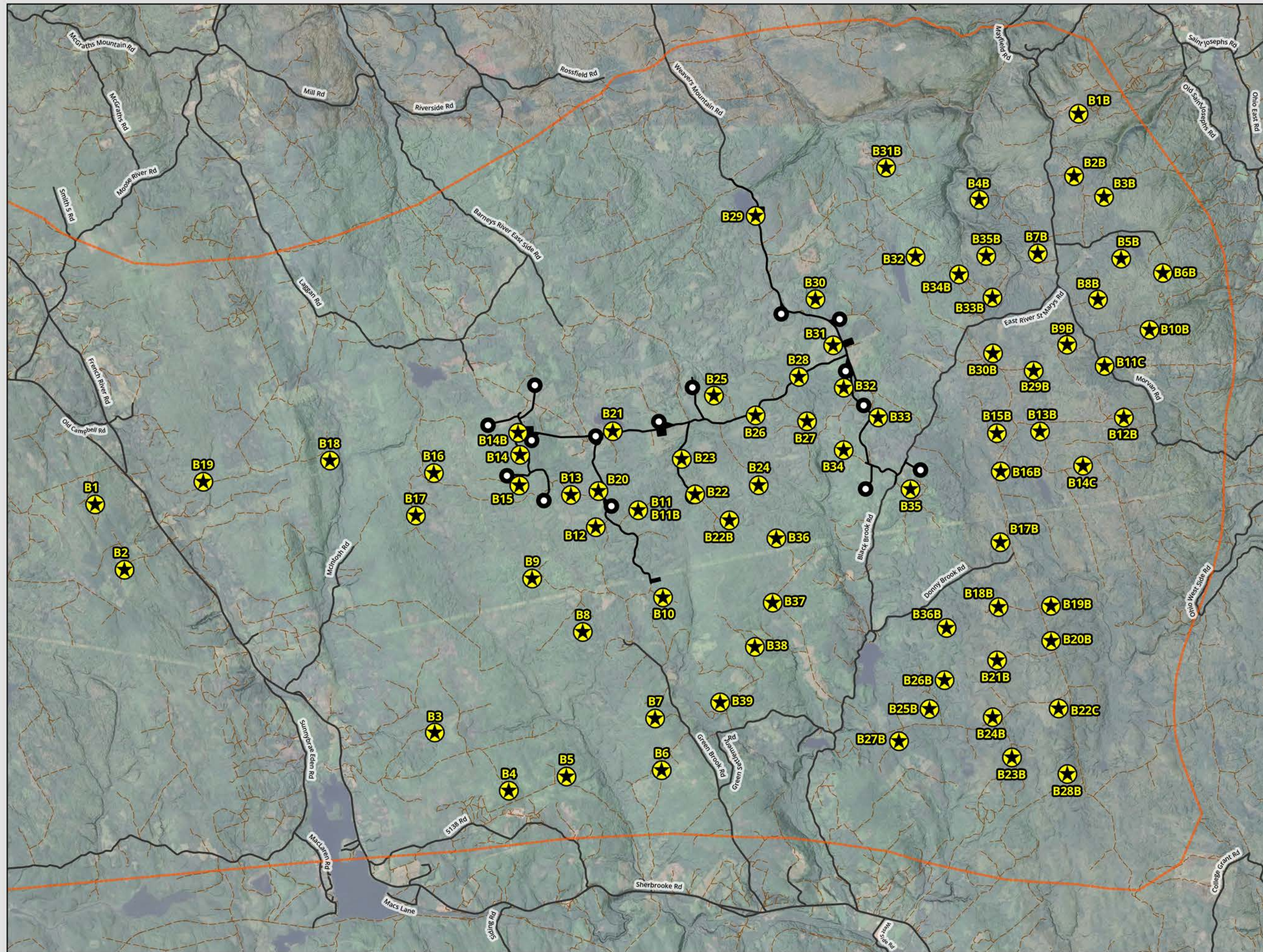
**CBCL**

SUGAR MAPLE  
WIND ENERGY PROJECT

**Fall Migration  
Bird Surveys**

DATE: 3/19/2026	PROJ N°: 251616	FIGURE: <b>12.4</b>
DRAWN BY: MC	CHECKED BY: NM	APPROVED: NM





- LEGEND**
- Breeding Bird Survey Location
  - Study Area
  - WTG
  - Potential Development Area
  - Addressed Road (Major)
  - Trail / Resource Road / No Maintenance

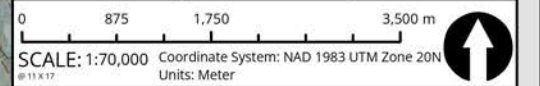
NOTES:

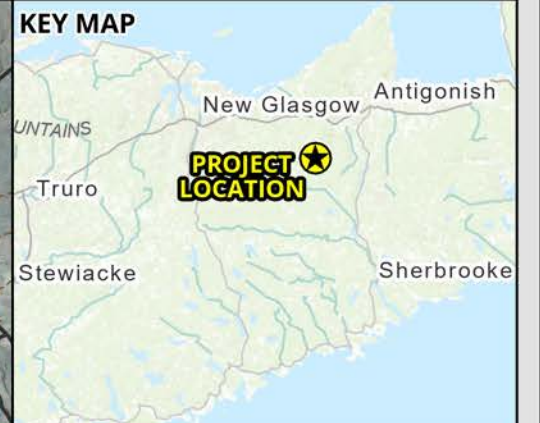
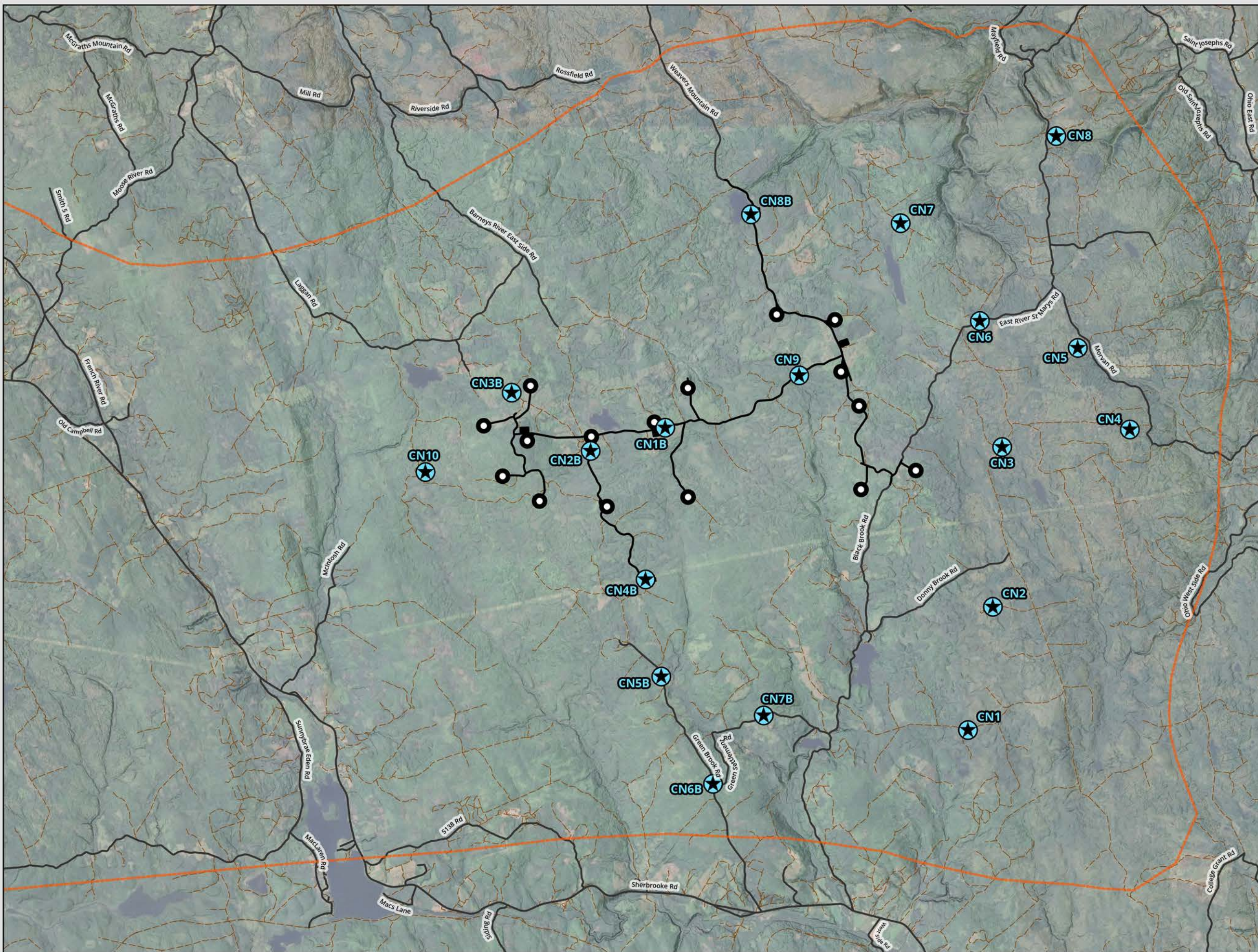
**CBCL**

SUGAR MAPLE  
WIND ENERGY PROJECT

**Breeding Bird  
Point Count Surveys**

DATE: 3/19/2026	PROJ N°: 251616	FIGURE: 12.5
DRAWN BY: MC	CHECKED BY: NM	APPROVED: NM





- LEGEND**
- Nightjar Survey Location
  - Study Area
  - WTG
  - Potential Development Area
  - Addressed Road (Major)
  - Trail / Resource Road / No Maintenance

NOTES:

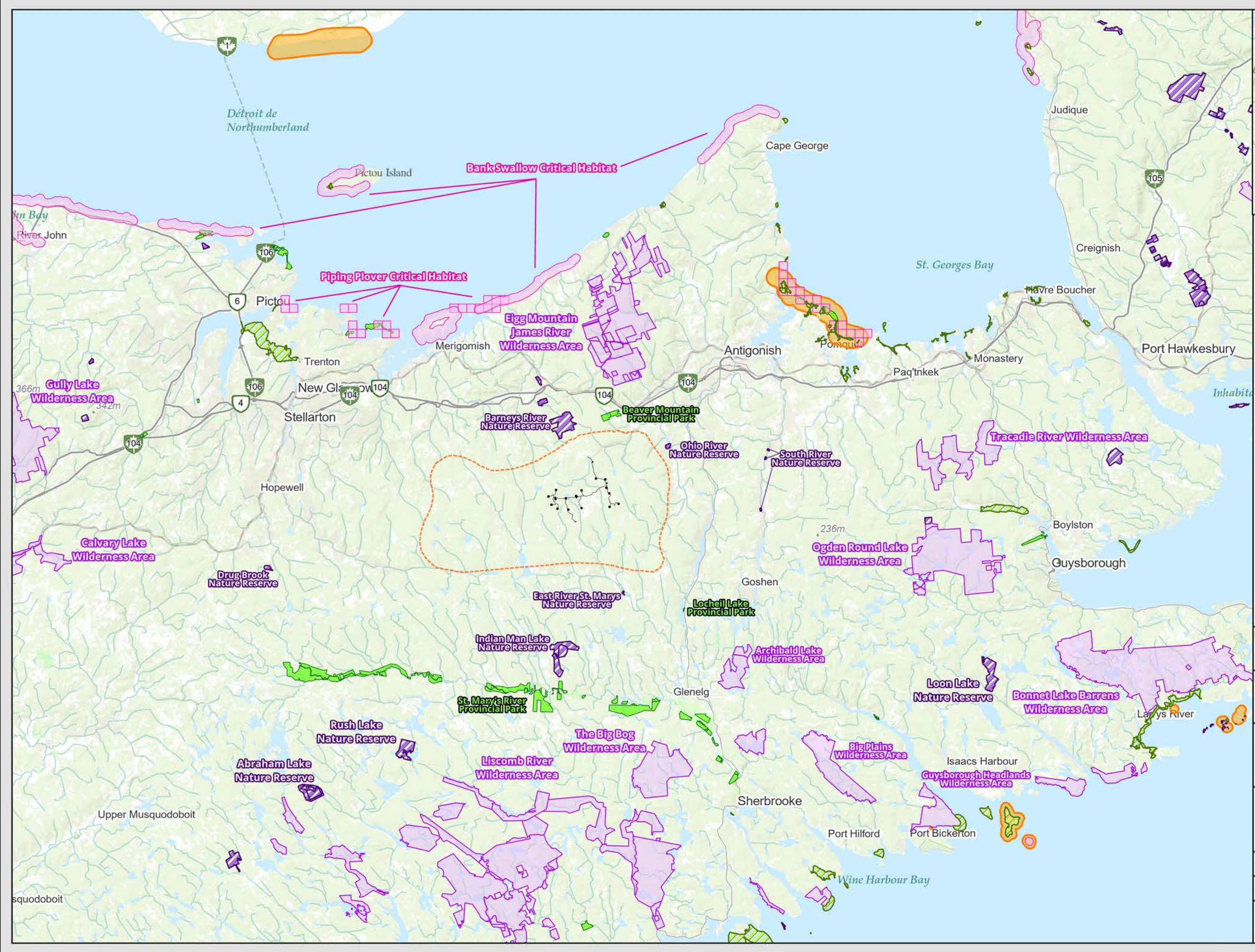
**SUGAR MAPLE  
WIND ENERGY PROJECT**

**Nightjar Surveys**

DATE: 3/19/2026	PROJ N°: 251616	FIGURE: <b>12.6</b>
DRAWN BY: MC	CHECKED BY: NM	APPROVED: NM

0 875 1,750 3,500 m

SCALE: 1:70,000 Coordinate System: NAD 1983 UTM Zone 20N  
Units: Meter



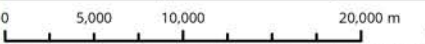
- LEGEND**
- Critical Habitat
  - Provincially Significant Migratory Bird Habitat
  - Important Bird Areas
- NS Parks and Protected Areas**
- Land Trust or Conservation Easement
  - Nature Reserve
  - Provincial Park
  - Wilderness Area
  - Potential Development Area
  - Study Area

NOTES:



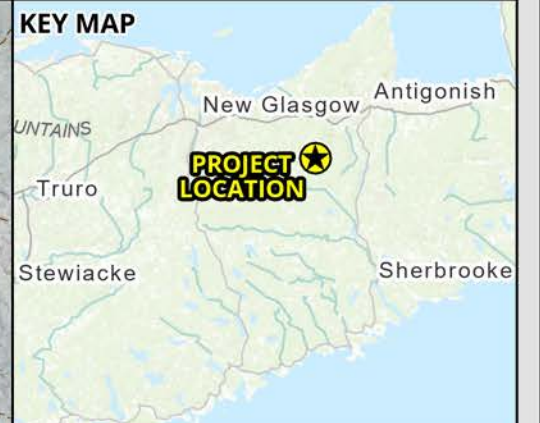
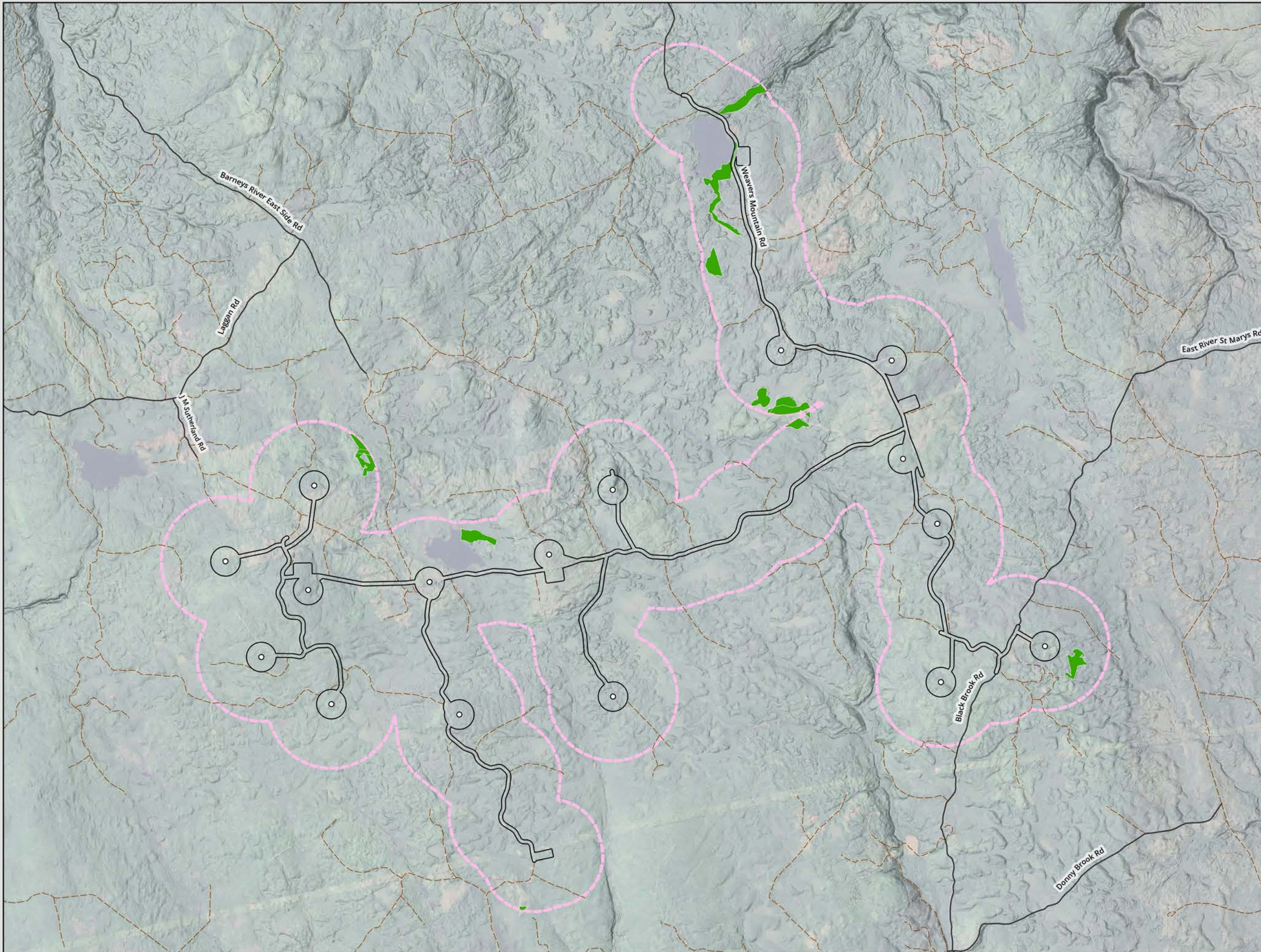
**SUGAR MAPLE  
WIND ENERGY PROJECT**

**Bird Conservation Areas**

DATE: 3/19/2026	PROJ N°: 251616	FIGURE: <b>12.7</b>
DRAWN BY: MC	CHECKED BY: NM	APPROVED: NM
		
SCALE: 1:425,000 Coordinate System: NAD 1983 UTM Zone 20N <small>Units: Meter</small>		







**LEGEND**

- Possible Suitable Habitat: Chimney Swift
- WTG
- Potential Development Area
- Addressed Road (Major)
- Trail / Resource Road / No Maintenance
- Local Assessment Area (500m PDA Buffer)

NOTES:

**CBCL**

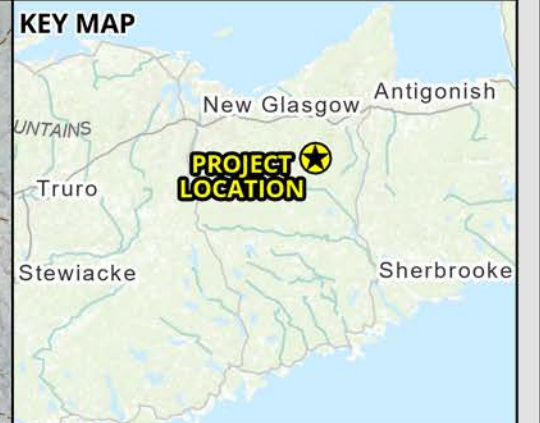
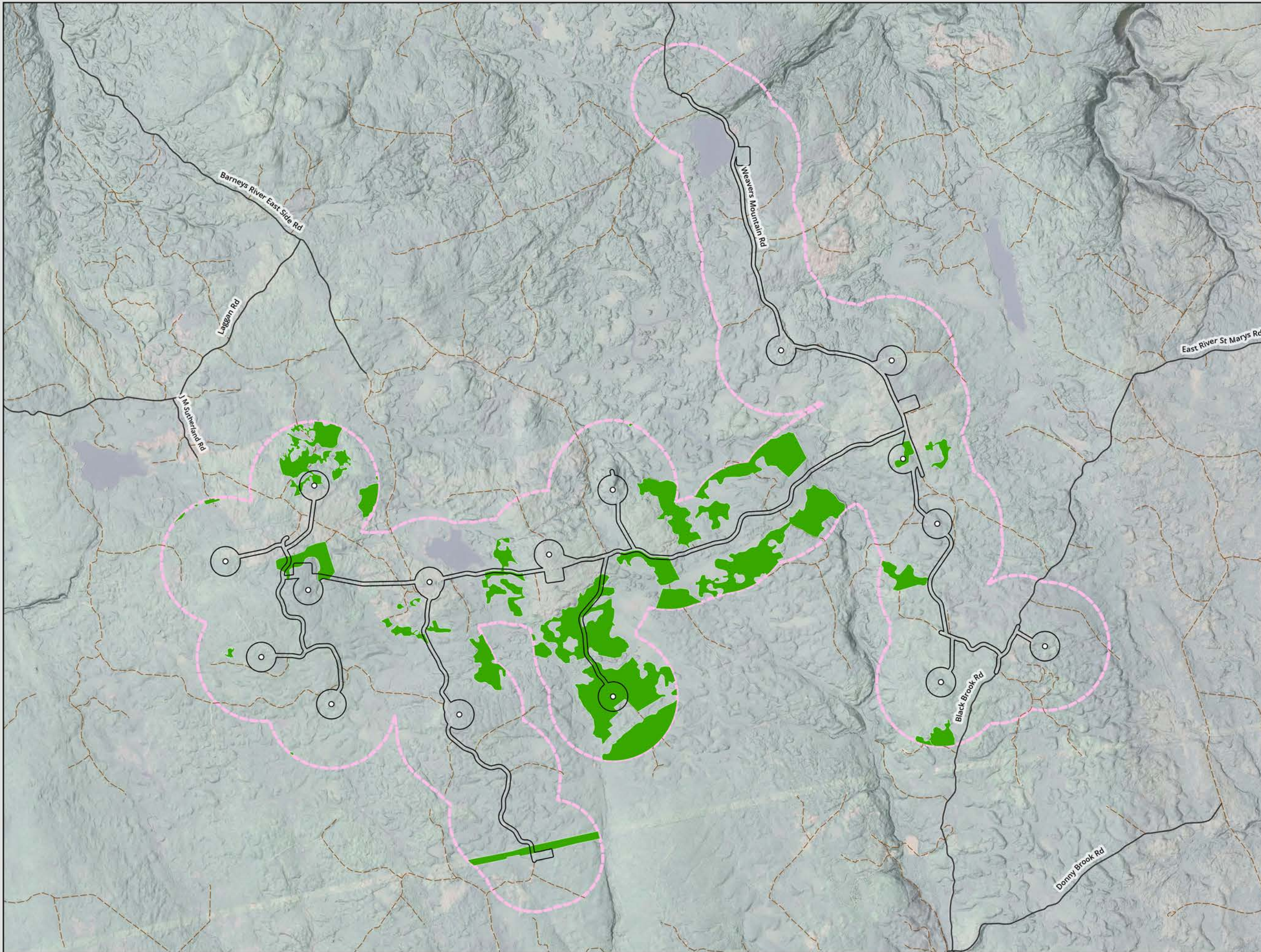
SUGAR MAPLE  
WIND ENERGY PROJECT

**Habitat Suitability Analysis:  
Chimney Swift**

DATE: 3/19/2026	PROJ N°: 251616	FIGURE: <b>12.9</b>
DRAWN BY: MC	CHECKED BY: NM	APPROVED: NM

0 450 900 1,800 m

SCALE: 1:37,000 Coordinate System: NAD 1983 UTM Zone 20N  
Units: Meter



- LEGEND**
- Possible Suitable Habitat: Common Nighthawk
  - WTG
  - Potential Development Area
  - Addressed Road (Major)
  - Trail / Resource Road / No Maintenance
  - Local Assessment Area (500m PDA Buffer)

NOTES:

**CBCL**

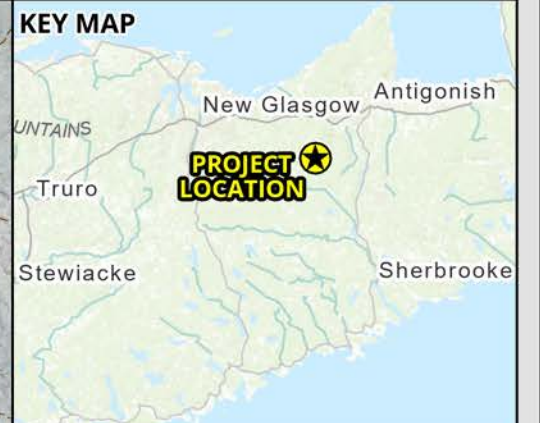
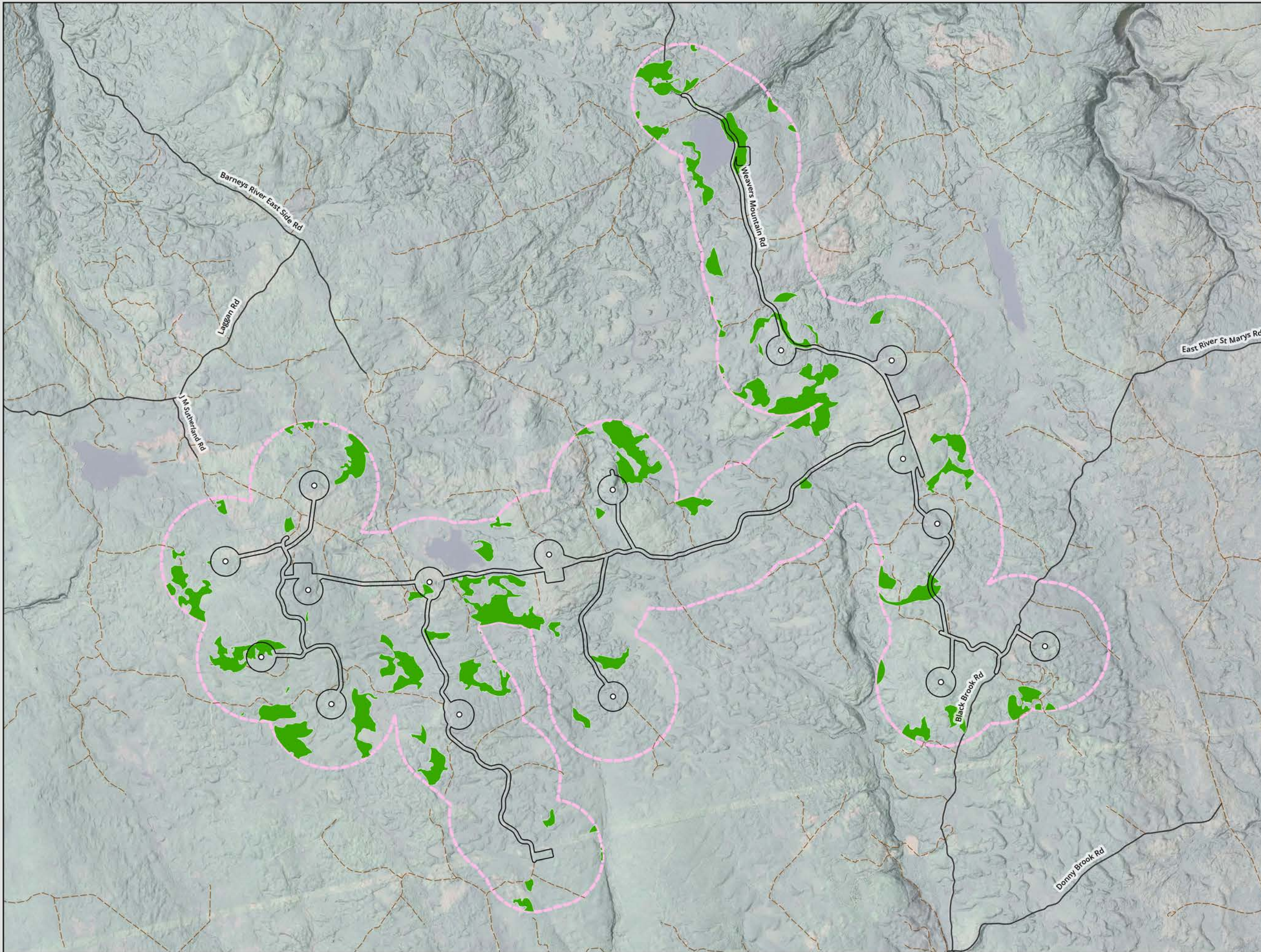
SUGAR MAPLE  
WIND ENERGY PROJECT

**Habitat Suitability Analysis:  
Common Nighthawk**

DATE: 3/19/2026	PROJ N°: 251616	FIGURE: <b>12.10</b>
DRAWN BY: MC	CHECKED BY: NM	APPROVED: NM

0 450 900 1,800 m

SCALE: 1:37,000 Coordinate System: NAD 1983 UTM Zone 20N  
Units: Meter



**LEGEND**

- Possible Suitable Habitat: Eastern Wood-peewee
- WTG
- Potential Development Area
- Addressed Road (Major)
- Trail / Resource Road / No Maintenance
- Local Assessment Area (500m PDA Buffer)

NOTES:

**CBCL**

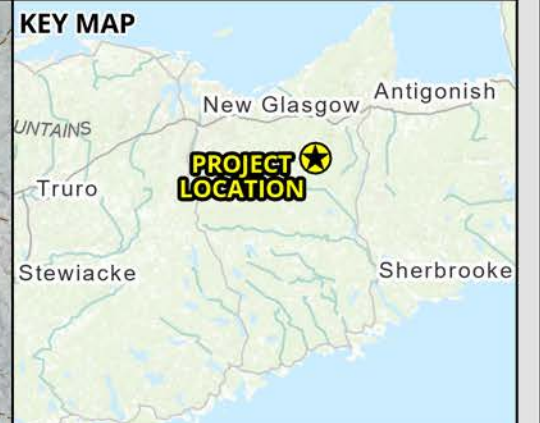
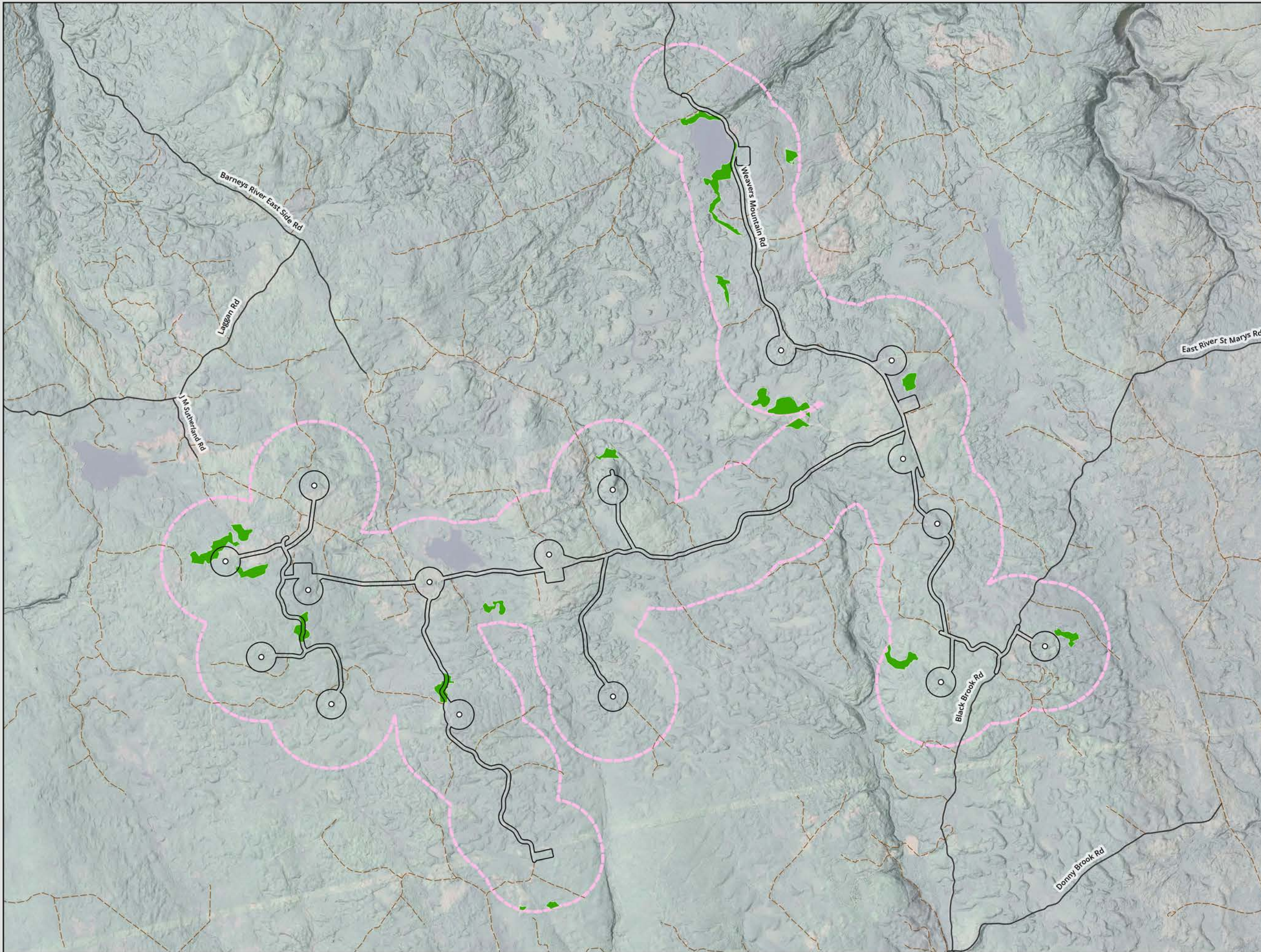
SUGAR MAPLE  
WIND ENERGY PROJECT

**Habitat Suitability Analysis:  
Eastern Wood-peewee**

DATE: 3/19/2026	PROJ N°: 251616	FIGURE: <b>12.11</b>
DRAWN BY: MC	CHECKED BY: NM	APPROVED: NM

0 450 900 1,800 m

SCALE: 1:37,000 Coordinate System: NAD 1983 UTM Zone 20N  
Units: Meter



- LEGEND**
- Possible Suitable Habitat: Evening Grosbeak
  - WTG
  - Potential Development Area
  - Addressed Road (Major)
  - Trail / Resource Road / No Maintenance
  - Local Assessment Area (500m PDA Buffer)

NOTES:




**SUGAR MAPLE  
WIND ENERGY PROJECT**

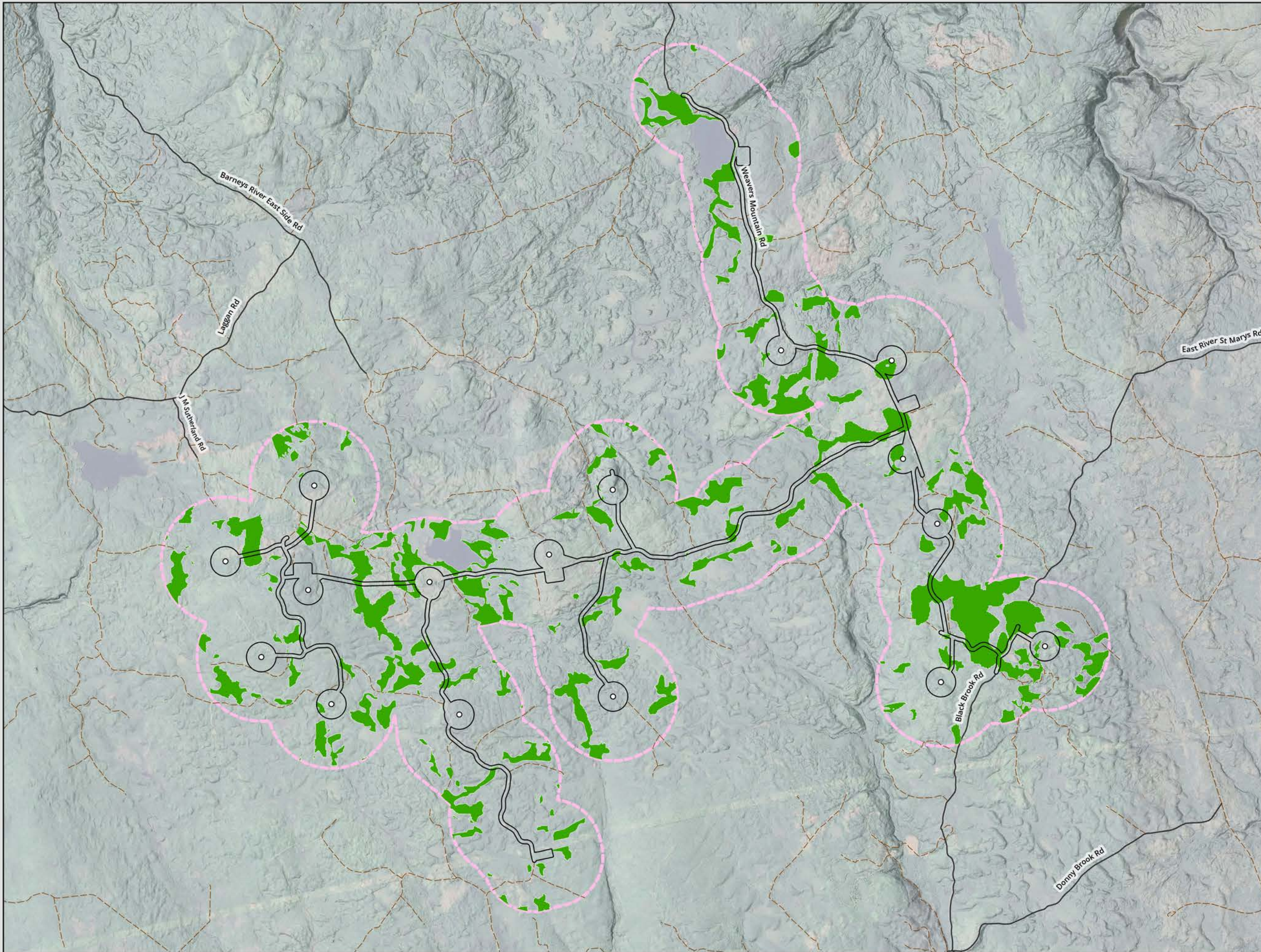
**Habitat Suitability Analysis:  
Evening Grosbeak**

DATE: 3/19/2026	PROJ N°: 251616	FIGURE: <b>12.12</b>
DRAWN BY: MC	CHECKED BY: NM	APPROVED: NM

0 450 900 1,800 m

SCALE: 1:37,000 Coordinate System: NAD 1983 UTM Zone 20N  
Units: Meter





**LEGEND**

- Possible Suitable Habitat: Olive-sided Flycatcher
- WTG
- Potential Development Area
- Addressed Road (Major)
- Trail / Resource Road / No Maintenance
- Local Assessment Area (500m PDA Buffer)

NOTES:

**CBCL**

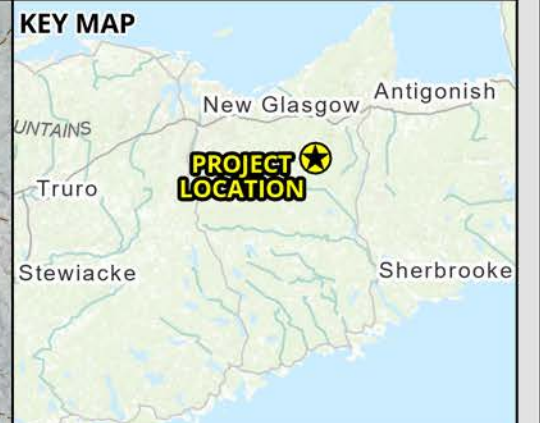
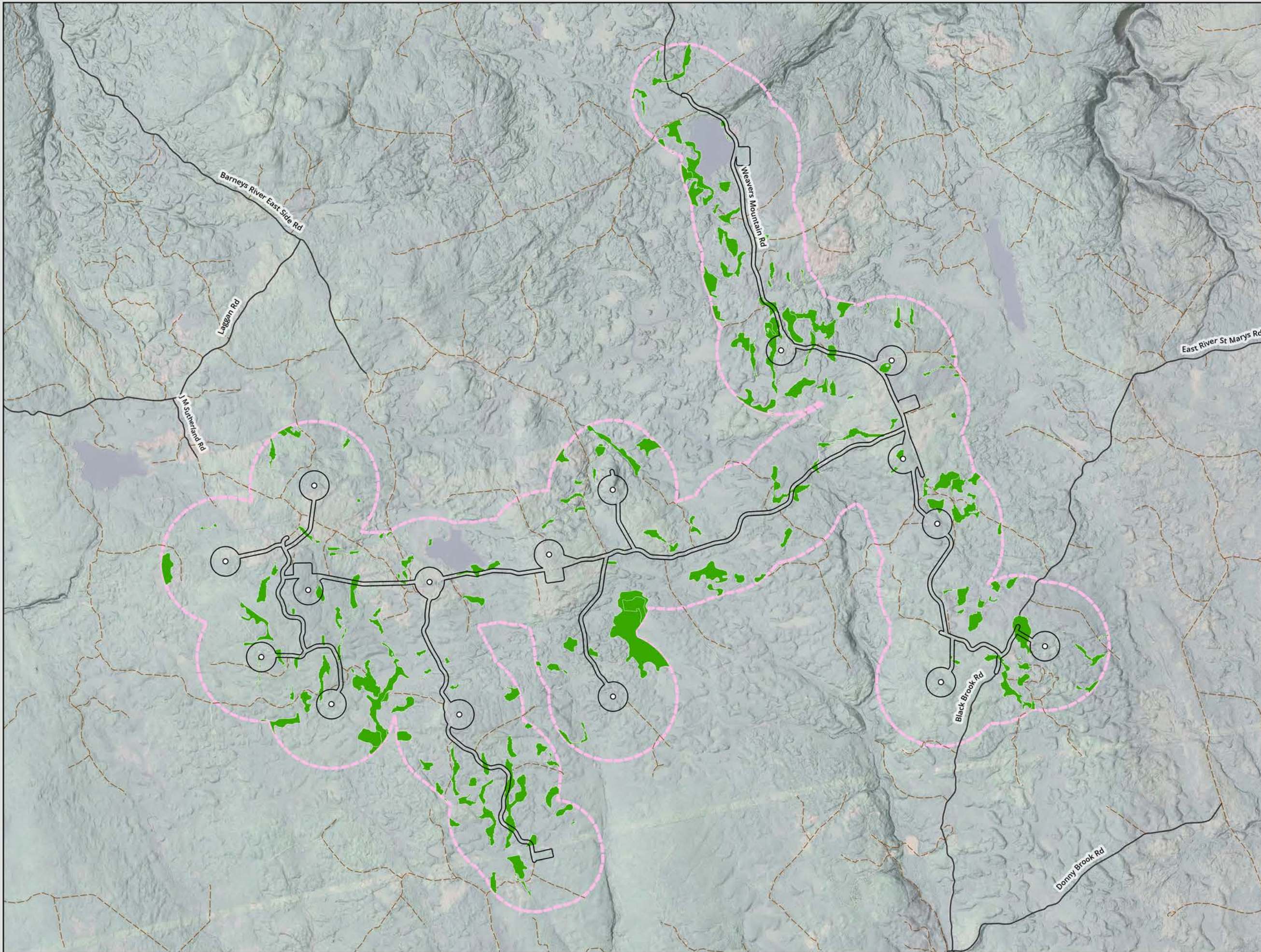
SUGAR MAPLE  
WIND ENERGY PROJECT

**Habitat Suitability Analysis:  
Olive-sided Flycatcher**

DATE: 3/19/2026	PROJ N°: 251616	FIGURE: <b>12.13</b>
DRAWN BY: MC	CHECKED BY: NM	APPROVED: NM

0 450 900 1,800 m

SCALE: 1:37,000 Coordinate System: NAD 1983 CSRS UTM Zone 18N  
Units: Meter



- LEGEND**
- Possible Suitable Habitat: Rusty Blackbird
  - WTG
  - Potential Development Area
  - Addressed Road (Major)
  - Trail / Resource Road / No Maintenance
  - Local Assessment Area (500m PDA Buffer)

NOTES:

**CBCL**

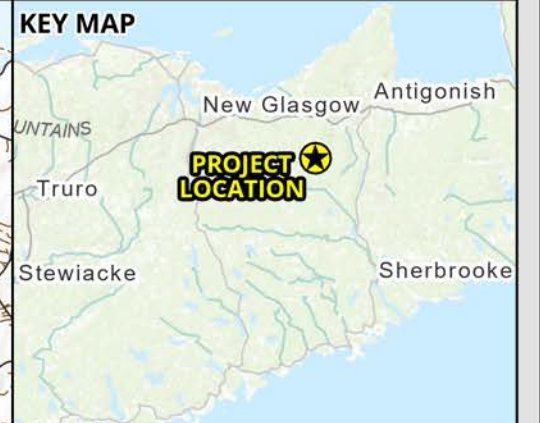
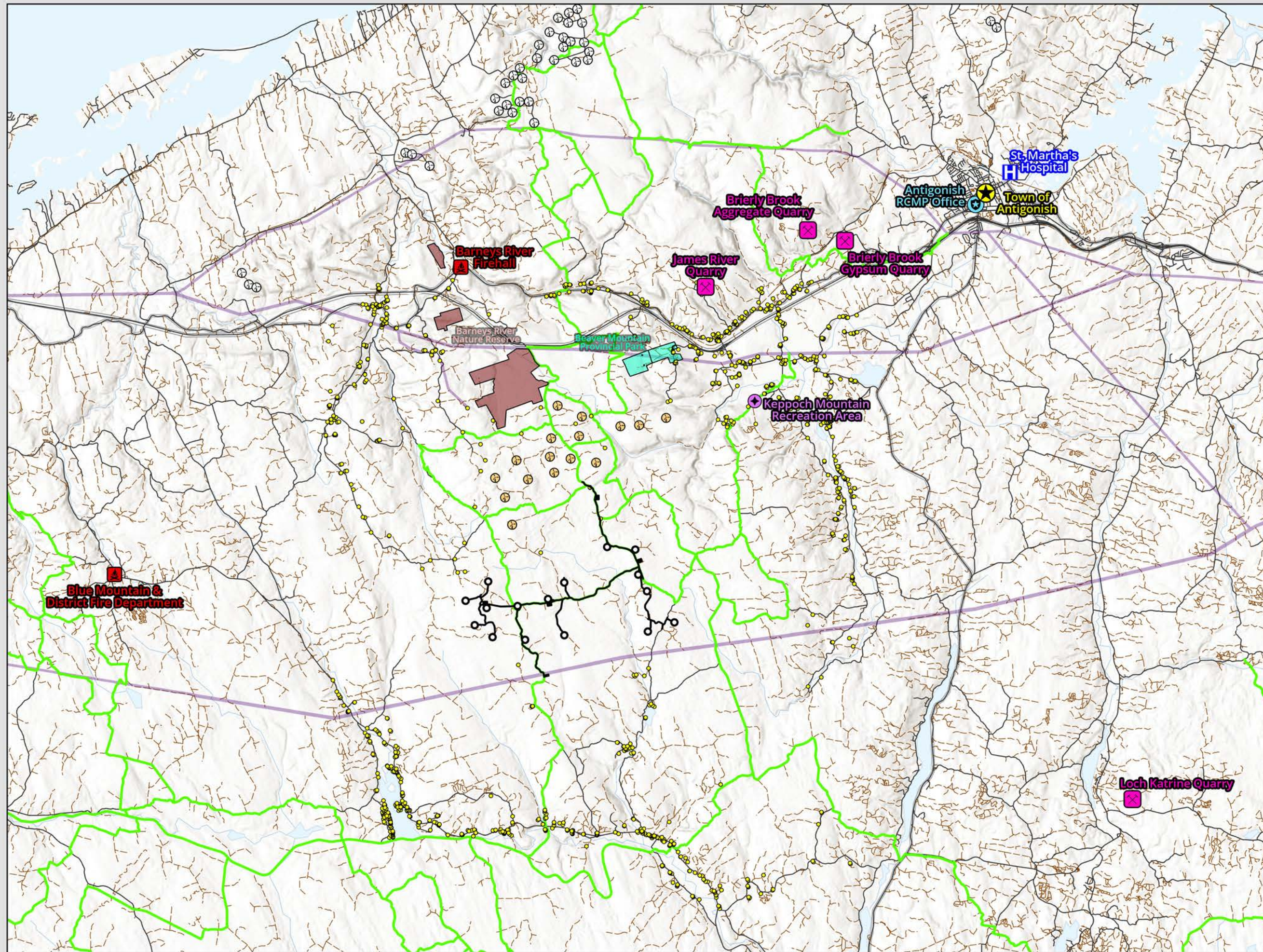
SUGAR MAPLE  
WIND ENERGY PROJECT

**Habitat Suitability Analysis:  
Rusty Blackbird**

DATE: 3/19/2026	PROJ N°: 251616	FIGURE: <b>12.14</b>
DRAWN BY: MC	CHECKED BY: NM	APPROVED: NM

0 450 900 1,800 m

SCALE: 1:37,000 Coordinate System: NAD 1983 UTM Zone 20N  
Units: Meter




- LEGEND**
- Local Assessment Area for the Socio-Economic Environment
  - Potential Development Area
  - WTG
  - Receptor (Residence / Camp)
  - Nearby WTG
  - Nearby WTG - Under Construction
- Points of Interest**
- Firehall
  - H Hospital
  - ⊕ Keppoch Mountain Recreation Area
  - ⊠ Quarry
  - ⊕ RCMP Office
  - ★ Town Centre
  - Snowmobile Association of Nova Scotia Trail (SANS)
  - NSPI Power Corridor
  - Addressed Road (Major)
  - Trail / ATV Road / Recreational Access
  - Nature Reserve
  - Provincial Park

NOTES:

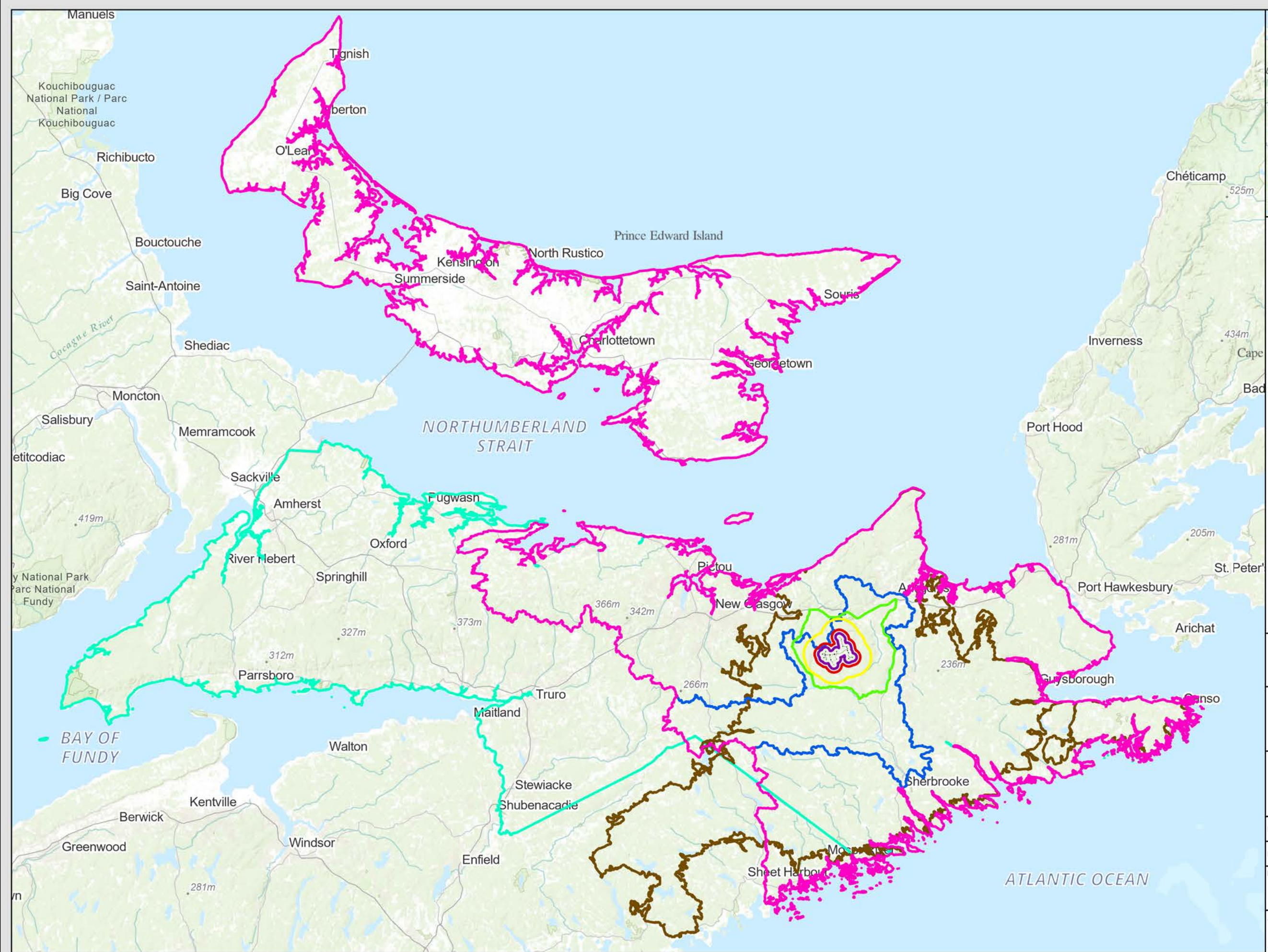


**SUGAR MAPLE  
WIND ENERGY PROJECT**

**Socio-Economic Features**

DATE: 3/19/2026	PROJ N°: 251616	FIGURE: <b>13.1</b>
DRAWN BY: SF	CHECKED BY: NM	APPROVED: NM
		
SCALE: 1:145,000 Coordinate System: NAD 1983 UTM Zone 20N <small>Units: Meter</small>		





- LEGEND**
- Regional Assessment Areas**
- ▭ Acoustic Environment
  - ▭ Air Quality, Electricity and Other Utilities, Transportation, Population and Economy
  - ▭ Aquatics/Watercourses
  - ▭ Flora
  - ▭ Indigenous Cultural Resources
  - ▭ Land Use and Value, Visual Landscape, Recreation and Tourism, Birds, Bats, Ambient Light
  - ▭ Wetlands
  - ▭ Terrestrial Wildlife



**SUGAR MAPLE  
WIND ENERGY PROJECT**

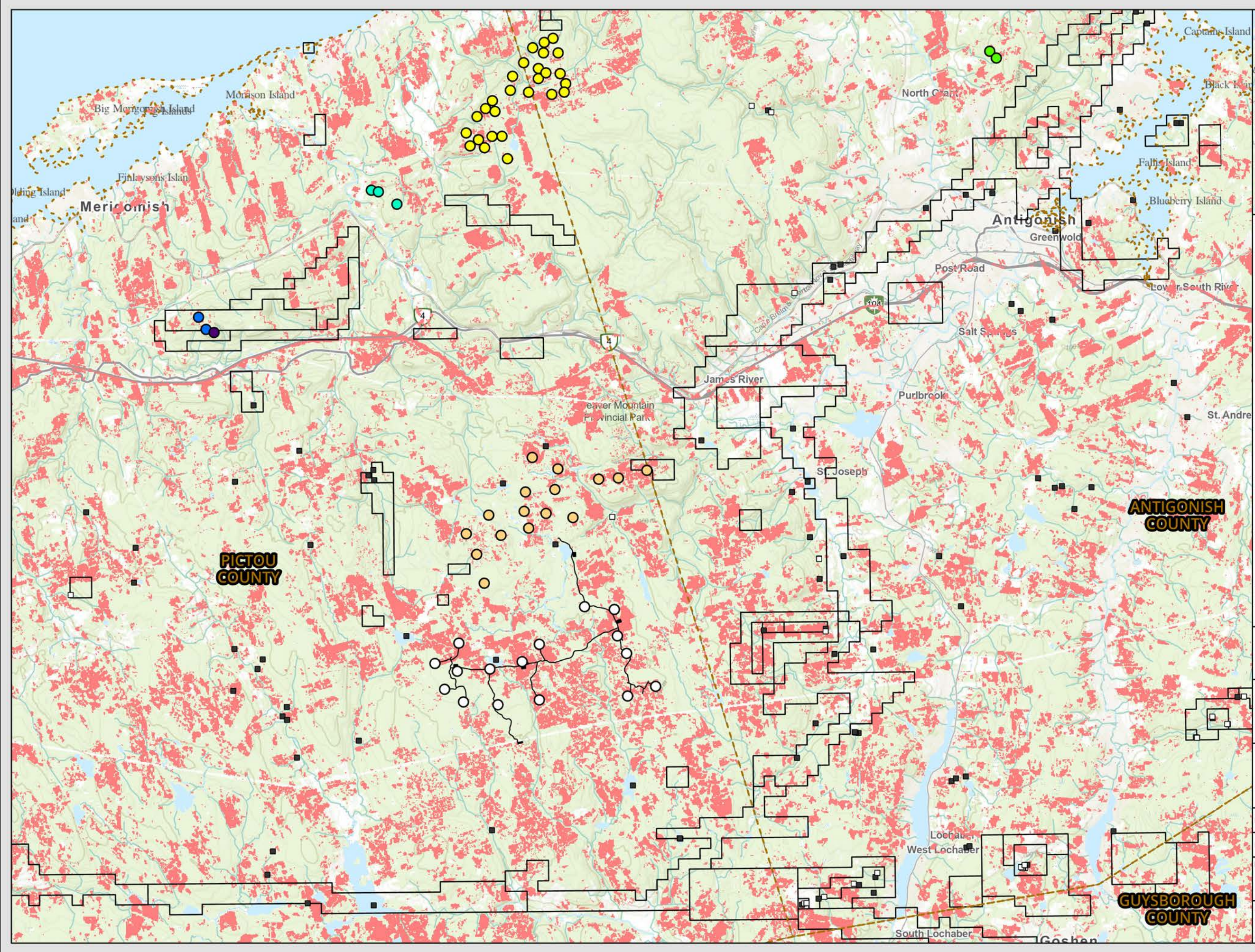
**Regional Assessment  
Areas**

DATE: 3/19/2026	PROJ N°: 251616	FIGURE: <b>15.1</b>
DRAWN BY: SF	CHECKED BY: NM	APPROVED: NM

NOTES:

0 10 20 40 Kilometers

SCALE: 1:1,000,000 Coordinate System: NAD 1983 UTM Zone 20N Units: Meter



- LEGEND**
- Antigonish / Pictou Wind WTG Locations**
- Auld's Mountain WTG Location (2)
  - Avondale WTG Location (3)
  - Fairmont WTG Location (2)
  - Glen Dhu WTG Location (27)
  - Pictou Landing WTG Location (1)
  - Sugar Maple WTG Location (Proposed) (16)
  - Weaver's Mountain WTG Location (Under Construction)(16)
- Area of Forest Loss / Disturbance Between 2001 and 2024**
- Industrial Commodities**
- Mineral Occurrence
  - Abandoned Mine Opening
  - ▭ Mineral Claims / Right of Lease
  - - - Municipality Boundary
  - Potential Development Area



**SUGAR MAPLE WIND ENERGY PROJECT**

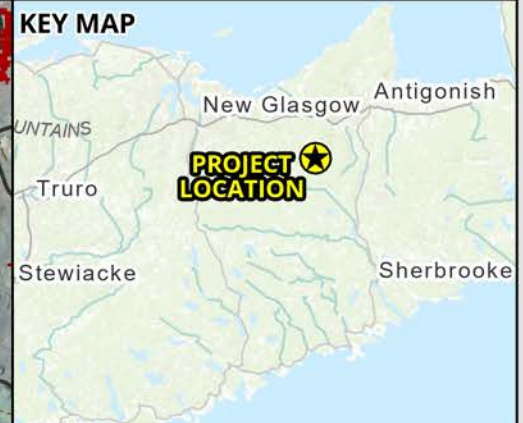
**Other Projects & Surrounding Activities**

DATE: 3/19/2026	PROJ N°: 251616	FIGURE: 15.2
DRAWN BY: SF	CHECKED BY: NM	APPROVED: NM

NOTES:

0 1,750 3,500 7,000 m

SCALE: 1:135,000 Coordinate System: NAD 1983 UTM Zone 20N Units: Meter



- LEGEND**
- Turbine Location
  - ▭ Potential Development Area
  - Addressed Road (NSTD, 2025)
  - Trail / Resource Road / No Maintenance
  - Area of Forest Loss / Disturbance Between 2001 and 2024



**SUGAR MAPLE  
WIND ENERGY PROJECT**

**Global Forest Watch:  
Forest Loss Database**

DATE: 3/19/2026	PROJ N°: 251616	FIGURE: <b>15.3</b>
DRAWN BY: SF	CHECKED BY: NM	APPROVED: NM

NOTES:

0 750 1,500 3,000 m

SCALE: 1:60,000 Coordinate System: NAD 1983 UTM Zone 20N  
Units: Meter