



Thank you for attending our

Community Engagement Session

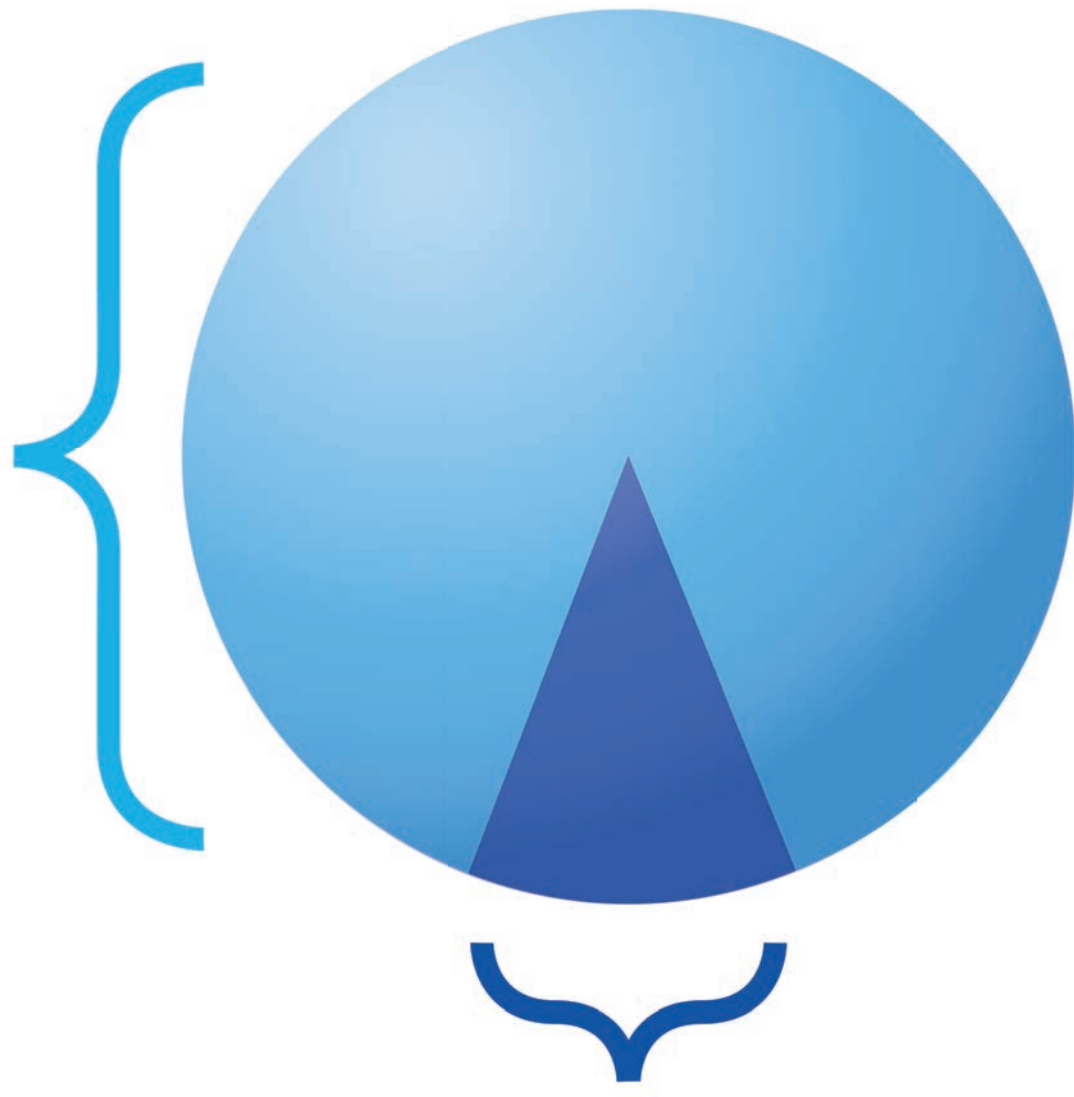
This is part of the public engagement process to
inform residents on the status of the

Sugar Maple Wind Energy Project

Welcome

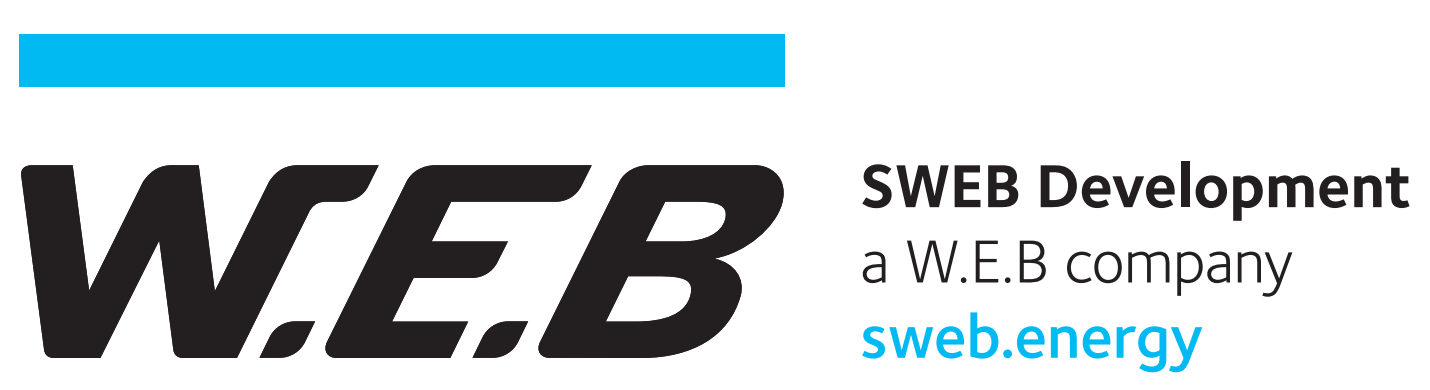


- **Parent Company**
- **Community-owned**
Based in Austria
4500+ investors
- **100 Projects in development**
Europe
Canada
United States
- **Complete project lifecycle**
Development
Construction
Operation
- **Clean Energy**
For more than 840,000 people



Total W.E.B Fleet:
613 MW in Operation

SWEB Portion of Fleet:
94.5 MW in Operation



- **North American subsidiary of WEB**
North American Offices in Halifax, NS,
and Natick, MA
- **Community-oriented projects**
Local investment opportunities
Partnerships with local entities

About Us



Nova Scotia Green Choice Program

The Green Choice Program (GCP) is an emerging green power offering developed through collaborative innovation between the province, suppliers, Nova Scotia Power Inc. (NSPI), and large energy buyers. The GCP is being administered by COHO and will solicit highly competitive renewable energy projects on behalf of the provincial government in association with NSPI and the Utilities and Review Board (UARB). The program will help Nova Scotia to reach its goal of obtaining 80% of its electricity from renewable resources and therefore making the province a leader in the energy transition and reducing our impacts on climate change. It will allow participating customers to purchase up to 100% of their electricity use from local renewable energy sources.

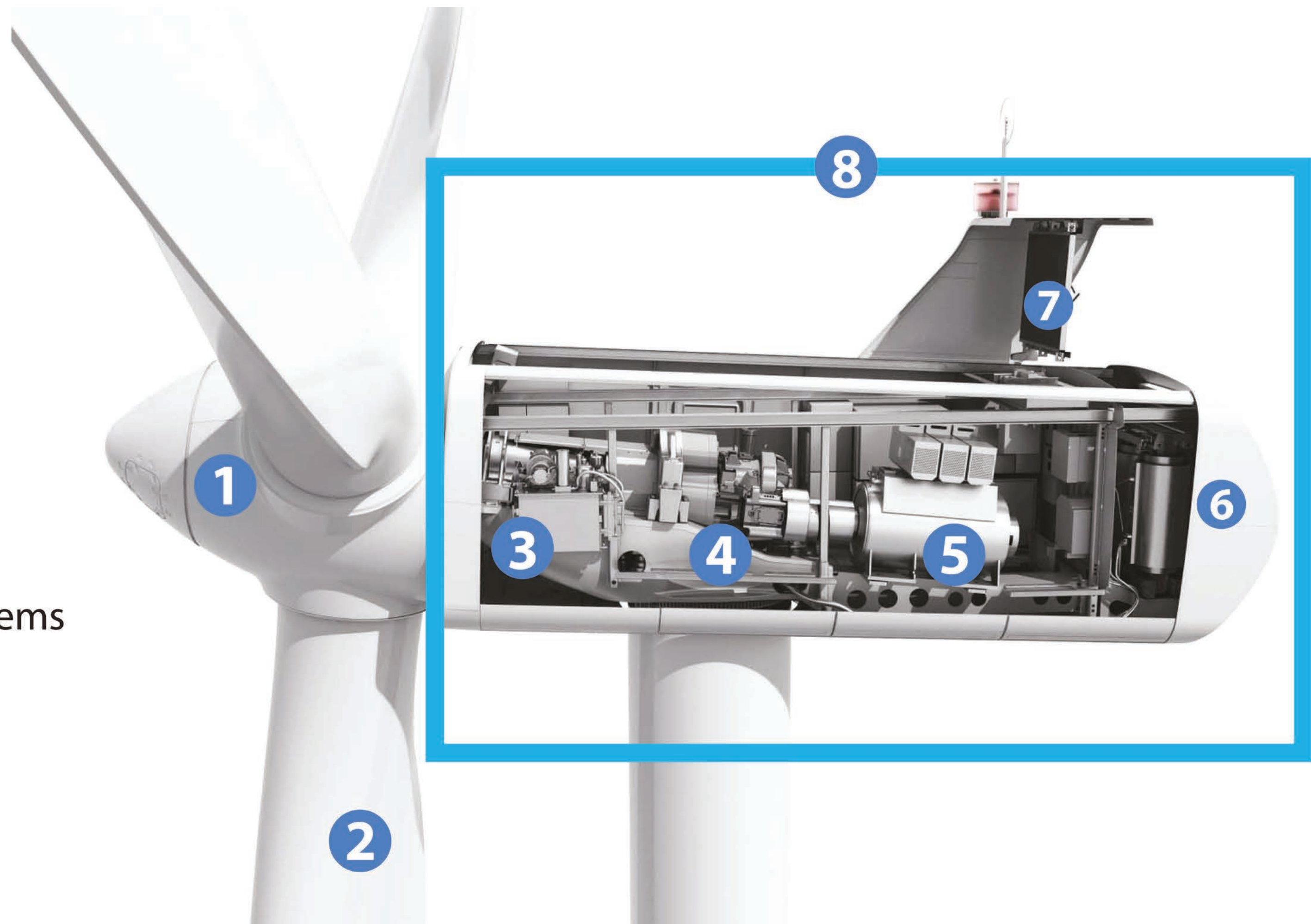
GCP Project Timeline

Milestone	Due Date
RFP Date of Issuance	December 1 st 2023
Notice of Intent to Bid Submission Deadline	April 2 nd 2024
Inquiries Deadline	April 23 rd 2024
Interconnection Feasibility Study results from NSPI	May 31 st 2024
Proposal Submission Deadline	June 14 th 2024
RFP Evaluation Period	June 14 th – August 9 th 2024
Shortlist Portfolio Notification Date	August 9 th 2024
Shortlist Portfolio Interview Period	
GCP Portfolio Notification Date	September 6 th 2024
Target Agreement Execution Period	December 6 th 2024
Request for Debriefing Deadline	December 13 th 2023
Anticipated Project Commercial Operation Date	December 2027

Green Choice Program



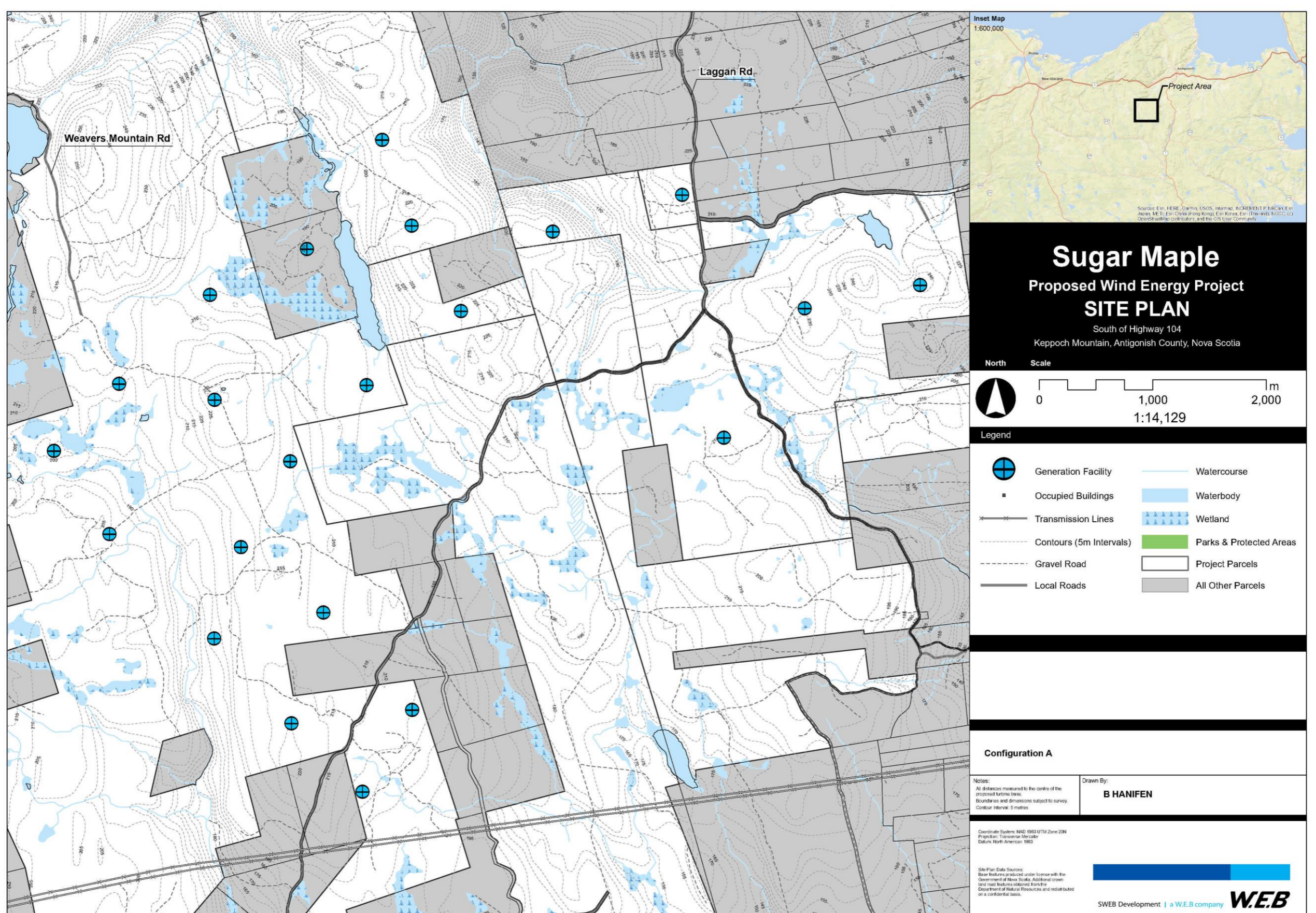
- 1 Rotor Hub
- 2 Blade
- 3 Brake Assembly
- 4 Gearbox
- 5 Generator
- 6 Monitoring Systems
- 7 Coolant System
- 8 Nacelle



How Wind Turbines Work



Sugar Maple Wind Project Area



Proposed Project Area



Project Proponent

The Proponent for this project will be established through a partnership between SWEB Development LP (SWEB Energy) and one or more local First Nation communities. More details regarding this partnership will be made available via the project website prior to the submission of the project to the Nova Scotia Green Choice Program in June 2024.

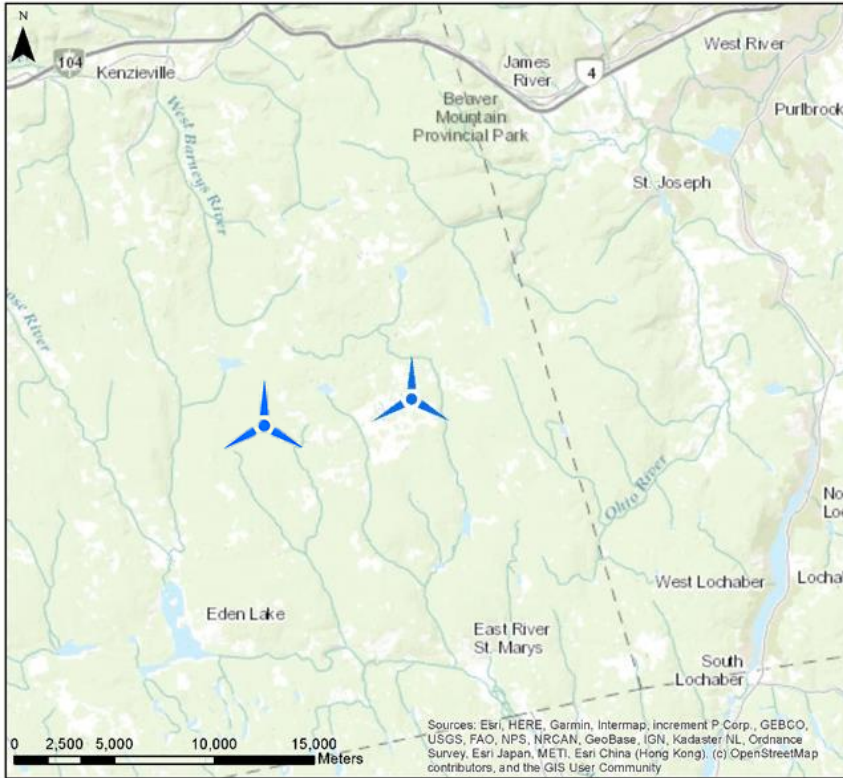
SWEB Development
a W.E.B company
sweb.energy

W.E.B

SWEB Energy is a North American subsidiary of W.E.B Group, a community-owned renewable energy developer and operator headquartered in Austria. The group develops, constructs, and operates wind, solar, and small-scale hydroelectric projects with wind energy representing the largest proportion of its projects.

By the nature of the community-ownership of SWEB Energy, the company has extensive experience in community engagement and have worked with local stakeholder groups on projects in Nova Scotia, and across Canada and the northeastern United States.

The Proponent



COMMUNITY ENGAGEMENT SESSION

Proposed Yellow Birch and Sugar Maple Wind Energy Projects

SWEB Development (SWEB) is hosting a community engagement session regarding the proposed Yellow Birch and Sugar Maple Wind Energy Projects. This engagement session will allow stakeholders to meet SWEB's development team, learn about the project's benefits, ask questions, and provide feedback to shape the proposed projects.

Project websites: yellowbirchwindenergy.ca
sugarmaplewindenergy.ca

SWEB Development
a W.E.B. company
sweb.energy



**WHEN: TUESDAY
MARCH 26, 2024**

**TIME: 4:30 PM –
7:30 PM**

**WHERE: ST.
JOSEPH'S LAKESIDE
COMMUNITY
CENTRE**

**ADDRESS:
2752 OHIO EAST
ROAD, ANTIGONISH**

**CONTACT INFO:
902 329 1494
SUGARMAPLE@SWEB.ENERGY**

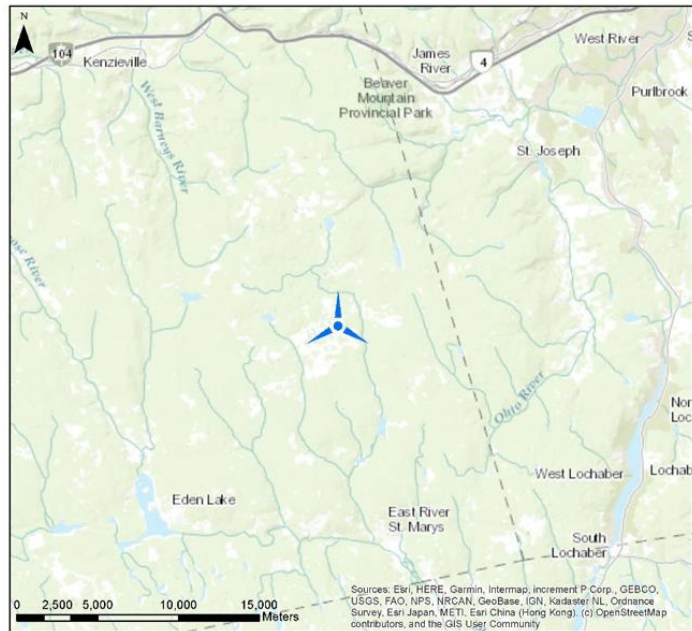
SWEB DEVELOPMENT

6080 Young Street, Suite 403
Halifax, NS
B3K 5L2

Welcome to the Proposed Sugar Maple Wind Energy Project Community Engagement Session

About the Project

The Sugar Maple Wind Energy Project is a proposed renewable energy facility with a total capacity between 59MW to 149MW. The project will be comprised of 9-23 turbines with a nameplate capacity over 6.8MW. The facility would be located on privately-held land in Pictou county, South of Marshy Hope and Highway 104. The project is being developed through a partnership with First Nation communities and SWEB Development LP (SWEB Energy), a North American subsidiary of W.E.B. Group.



About the Green Choice Program

SWEB Development is currently working towards submission of the proposed Sugar Maple Wind Energy Project under the Green Choice Program Request for Proposals (RFP). The Green Choice Program is a competitive procurement conducted by the Province of Nova Scotia and COHO to procure 1,100 gigawatt hours of wind and solar electricity in Nova Scotia per year. This program allows large scale energy consuming customers throughout the province to procure their energy from renewable sources instead of fossil fuels.

Project Benefits

A central focus of the project during development, construction, and operations is to ensure that as much local labour, services, and materials are used as possible. It is anticipated that if the project is built, it will create a number of direct and indirect benefits for various stakeholders and First Nation communities. The project will have a positive impact on local businesses and will result in employment opportunities in addition to tax revenue for municipal, provincial, and federal governments. Further, a share of project revenues will be used to support local community groups and underrepresented communities in the province.

With respect to the environment and climate change, the project is expected to significantly offset carbon dioxide (CO2) emissions from Nova Scotia's current electricity production and will produce enough power for up to 26,000 homes.

SWEB's Approach to Wind Energy

SWEB Energy is a North American subsidiary of W.E.B Group, a community-owned renewable energy developer headquartered in Austria. W.E.B Group has been involved in planning, developing, financing, constructing, and operating renewable energy projects for over 25 years. Currently, W.E.B Group has a total of 523 MW of installed capacity in Austria, Germany, Italy, the Czech Republic, France, Canada, and the United States. The group develops, constructs, and operates, wind, solar, and small-scale hydroelectric projects with wind energy representing the largest proportion of its projects.

By the nature of the community-ownership of SWEB Energy, the company has extensive experience in community engagement and have worked with local stakeholder groups on projects in Nova Scotia, and across Canada and the northeastern United States. Through the involvement of community members throughout Nova Scotia, SWEB has successfully developed and commissioned three phases of community-owned wind energy projects, totaling 12 projects, 20 WTGs and 39.63 MW of installed capacity under the Community Feed-in Tariff (COMFIT) program. SWEB has also commissioned a 9 MW community-owned wind energy project in Maine, with another 20 MW wind project currently in construction. As well, SWEB Energy's Wisokolamson Energy Project, an 18 MW wind energy project located West of Riverside-Albert in New Brunswick was developed and constructed through a partnership with Woodstock First Nation as part of a provincial initiative led by New Brunswick Power.

Contact Us

SWEB Energy

6080 Young St, Suite 403
Halifax, NS
B3K 5L2
Canada
Local: (902) 431-0564
Toll Free: +1 (844) 468 3134

Project Contact

Jason Parisé
Development Director, SWEB Development

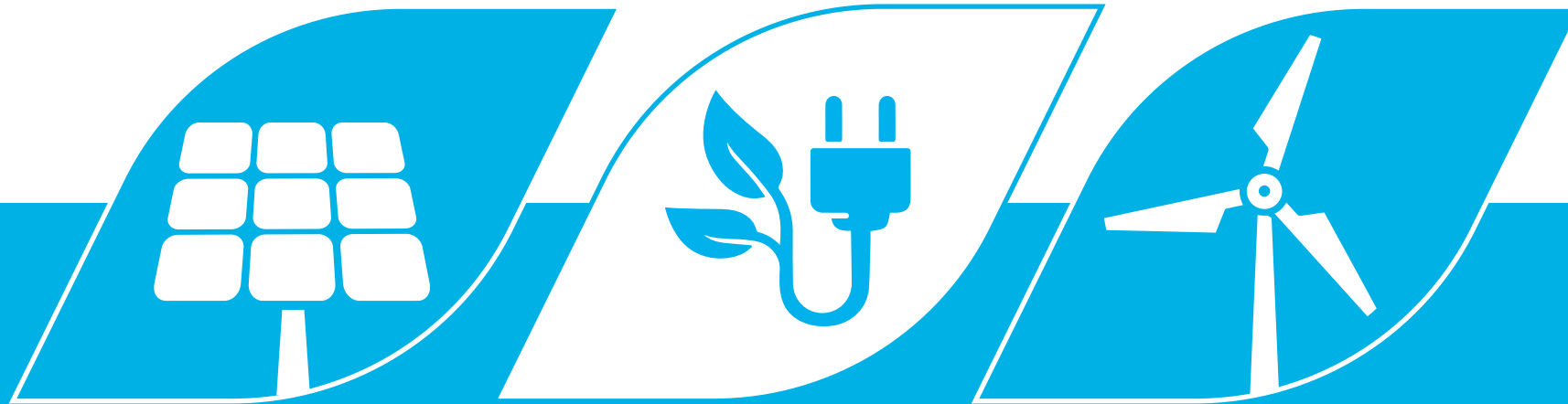
Phone: +1 902-431-0564 ext.261

Mobile: +1 902-329-1494

sugarmaple@sweb.energy

Website: www.sugarmaplewindenergy.ca





Welcome to the second Community Engagement Session for the Proposed Yellow Birch and Sugar Maple Wind Energy Projects

This presentation is being recorded

May 14, 2024

Rules of Engagement

- Please ensure your name appears correctly
- All participants are muted
- To ask a question, please type it into the chat or click the raise hand icon. Our moderator will read out all questions in the order they were received during the Q&A Period
 - Speakers will be unmuted as necessary
- Any question that is not answered within the allotted time will be answered in a written format and posted to the project website
- Reminder: This presentation as well as the question transcript is being recorded

Acknowledgment

W.E.B

Today we will be talking about our proposed Yellow Birch and Sugar Maple Wind Energy Projects which is in unceded and surrendered Mi'kma'ki, the traditional territory of the Mi'kmaq people.

We are all treaty people.

Today's Events



Time	Event
5:30 – 5:40	Participant sign on, rules of engagement & acknowledgement
5:40 – 5:45	Introduction to key team members
5:45 – 6:15	Presentation
6:15 – 7:00	Question & Answer Period

Team Members



Team Member	Position / Role	Location
Jason Parisé	Development Director / Presenter	Halifax, NS
Sarah Rosenblat	Senior Development Manager / Moderator	Halifax, NS
Mason Baker	Director of Technical Services / Q&A Support	Halifax, NS
Stefan Karkulik	CFO / Q&A Support	Montreal, QC
Rory Cantwell	CEO / Q&A Support	Halifax, NS
Sam Cheshire	Project Developer / Q&A Support	Halifax, NS
Billy Hanifen	GIS Technician / Q&A Support	Antigonish, NS
Evan De Silva	Junior Project Developer / Q&A Support	Halifax, NS
Mir Sultan	Junior Project Developer / Q&A Support	Halifax, NS

SWEB Development

Renewable Energy for Nova Scotia



Renewable Energy Developer & Operator

- ⚡ We plan, we build, we operate. A reliable partner over the lifetime of the project
- ⚡ Selling projects is not part of our regular business model



Experienced in Community Partnerships

- ⚡ Existing Community Partnerships in
 - Nova Scotia
 - New Brunswick
 - Maine



North American Headquarters in Halifax

- ⚡ Halifax staff manages projects in Atlantic Canada & US
- ⚡ Every successful project sustains and creates jobs in Nova Scotia



Strong Financial Backing

- ⚡ SWEB's Parent company, W.E.B, is Austria's biggest community-owned renewable energy company
- ⚡ No majority shareholder

About Us

W.E.B

613 MW
installed capacity

8 countries

2 continents

Sustainable investment



8,300 investors

of which **6,600** are shareholders

268
employees



Clean energy for

1,000,000
people

Office locations

- 📍 Pfaffenschlag (headquarters; AT)
- 📍 Boston-Natick (USA)
- 📍 Bratislava (SK)
- 📍 Brno (CZ)
- 📍 Halifax (CA)
- 📍 Hamburg (DE)
- 📍 La Spezia (IT)
- 📍 Paris (FR)



262

wind power plants



47

solar power plants



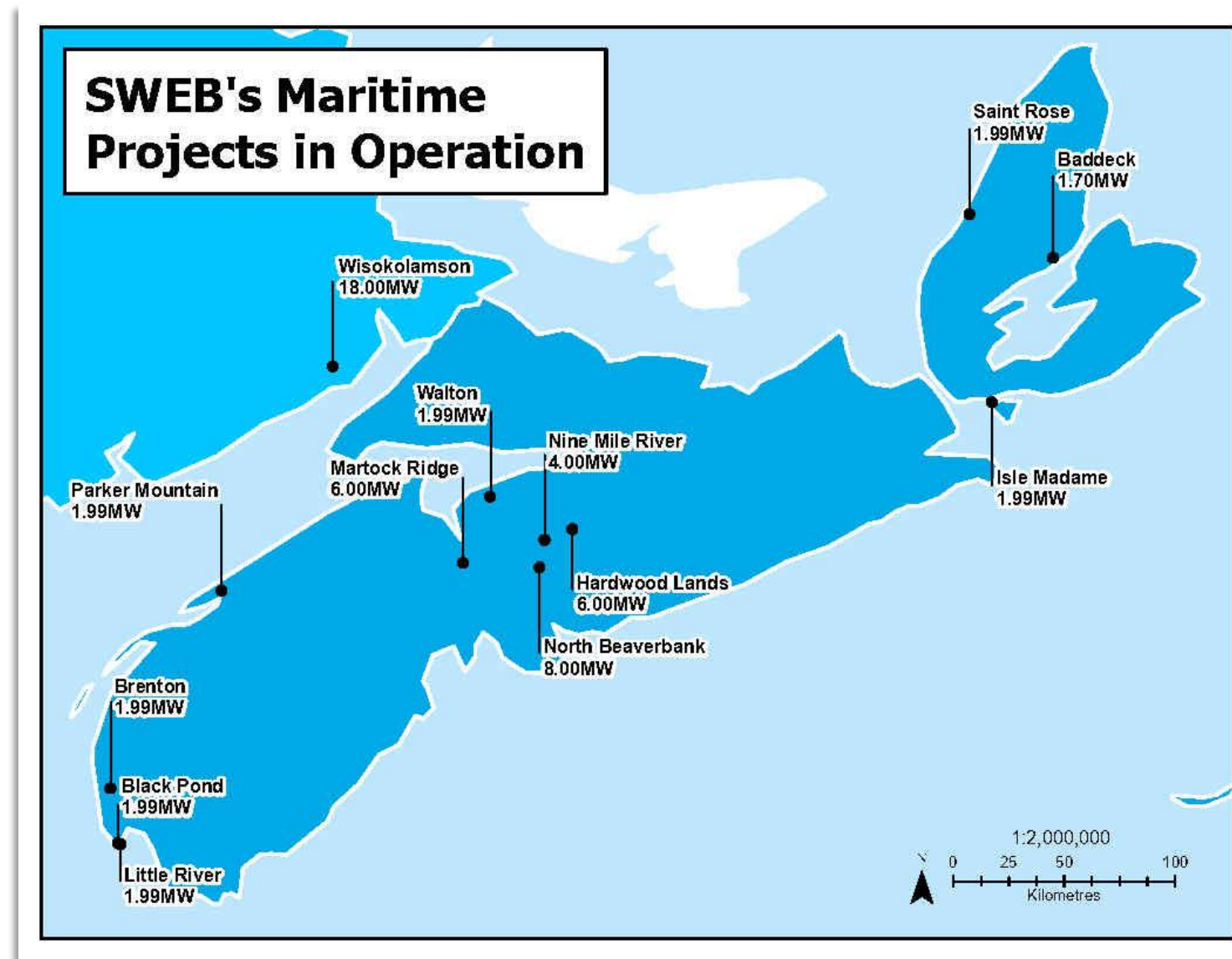
2

hydroelectric power plants

Operational Projects in the Maritimes



- Participated in COMFIT program with largest proportion of COMFIT wind projects in the province
- Participated in NB Power's LORESS program with projects throughout New Brunswick and three different community partners
- Continued development of wind and solar energy projects throughout the region



Nova Scotia COMFIT Projects

- 20 wind turbines throughout the Province
- Partnership with local partners:
 - Scotian Wind, Inc.
 - Scotian Windfields Inc.
- Community benefit program for local communities



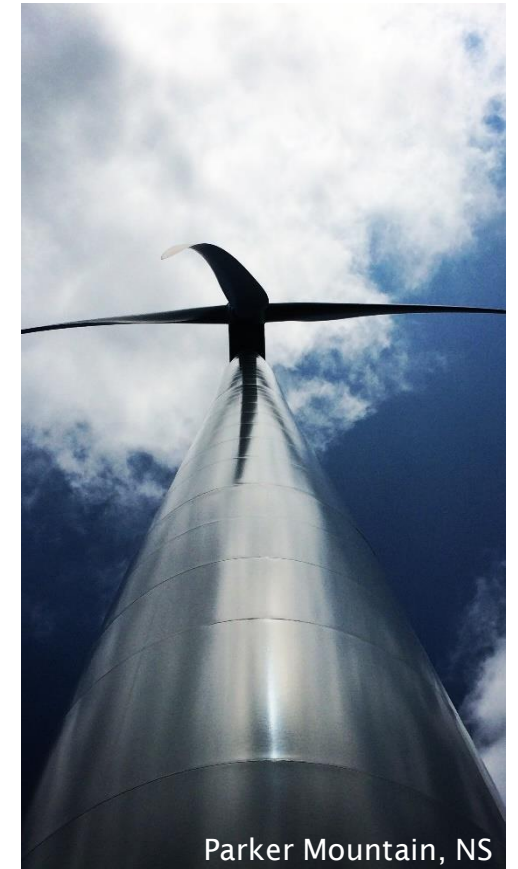
Baddeck, NS



North Beaver Bank, NS



Brenton, NS



Parker Mountain, NS



Hardwood Lands, NS



Rooted in Nova Scotia

SWEB contributes funds to:

- Halifax Hawks Atom A Hockey Team
- The Keppoch (Positive Action for the Keppoch)
- Sutherland's Lake Trail Groomer Association
- Walton and Area Development Association
- Baddeck Lions Club
- Hardwood Lands Community Centre
- Sipekne'katik First Nation (Indian Brook)
- Yarmouth and Area Community Fund
- Parker Mountain Wind Turbine Society
- Municipality of the County of Inverness
- Harbour Hall Community Fund
- West Hants Community Fund
- Beaver Bank Community Awareness Association
- Le fonds "La picasse" (Community Foundation)
- Nine Mile River Community Hall
- L'Association du Musee de Wedgeport

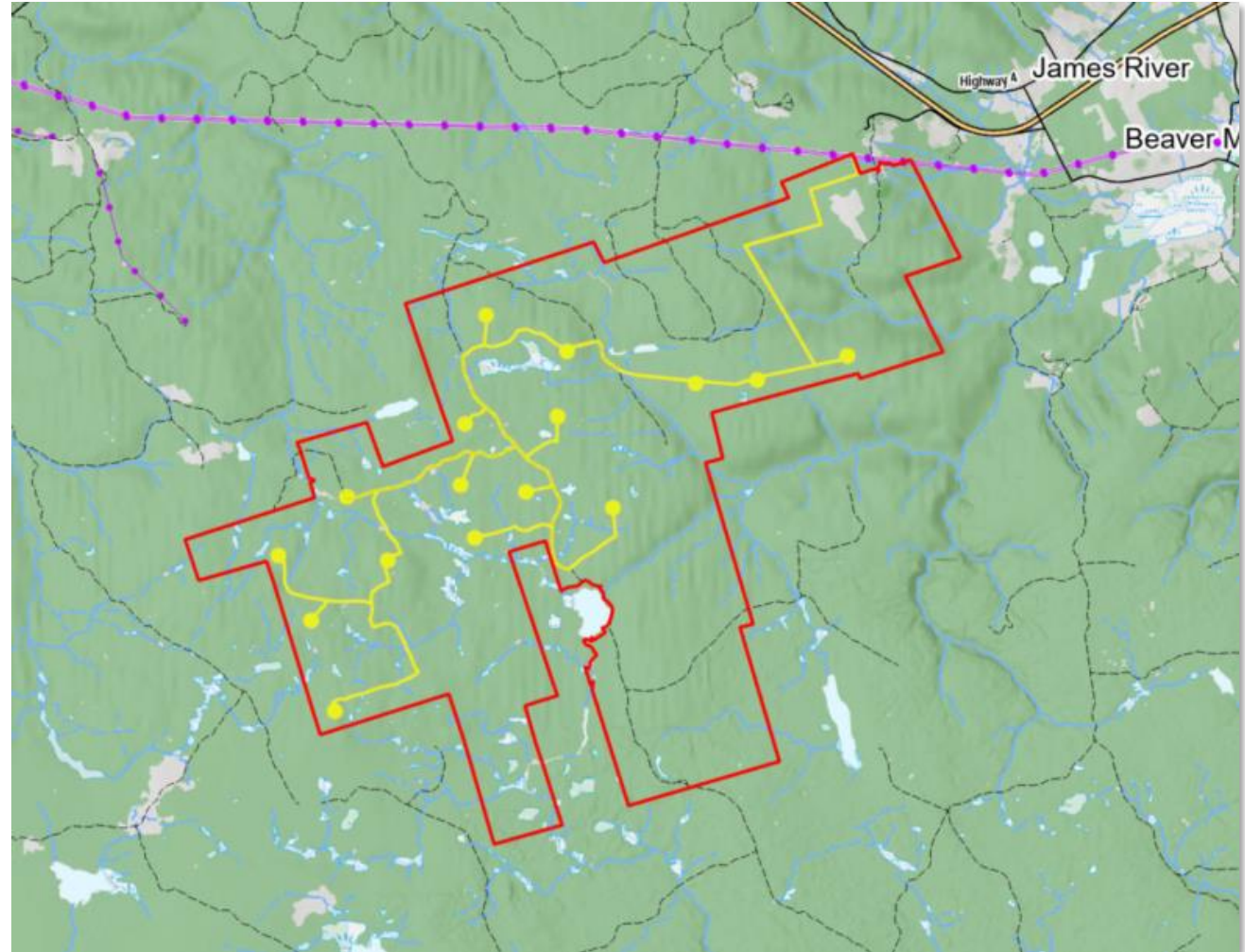


Wisokolamson Energy Project

- 18 MW / 5 wind turbine project in Albert County, New Brunswick
- Partnership with Woodstock First Nation
- Bursary program for Woodstock First Nation students
- Solar projects for Riverside-Albert and Woodstock First Nation in development
- First program under NB “LORESS” program to achieve Commercial Operation
 - Only 50% of the projects under the program were successful.

Weavers Mountain Wind Energy Project

- 94.4 MW / 16 wind turbine project in Pictou and Antigonish Counties, Nova Scotia
- Partnership with Glooscap First Nation
- Capacity building initiatives established
- Community Liaison Committee (CLC) established for the project
- One of five wind energy projects awarded under the Nova Scotia Rate-base Procurement in 2022



Green Choice Program



Green Choice Program

- Capacity for generation in 2024 RFP is 350+ MW based on subscription results in 2023/2024.
- Focus on moving NS towards its 80% renewable energy by 2030 goal.
- Focus on benefits and capacity building for underrepresented communities in Nova Scotia.
- Additional scoring points to be given to equity initiatives with Mi'kmaq communities.
- Expect 1-2 subsequent procurements towards 2030.

Timeline

NSPI Feasibility Study Results: May 31

Notice of Intent to Bid: June 7

Inquiries Deadline: June 14

Proposal Submission Deadline: June 28

RFP Evaluation Period: June 28 – August 23

Shortlist Portfolio Notification: August 23

Shortlist Portfolio Interviews: August/September

GCP Portfolio Notification Date: September 20

Target PPA Execution Date: December 20

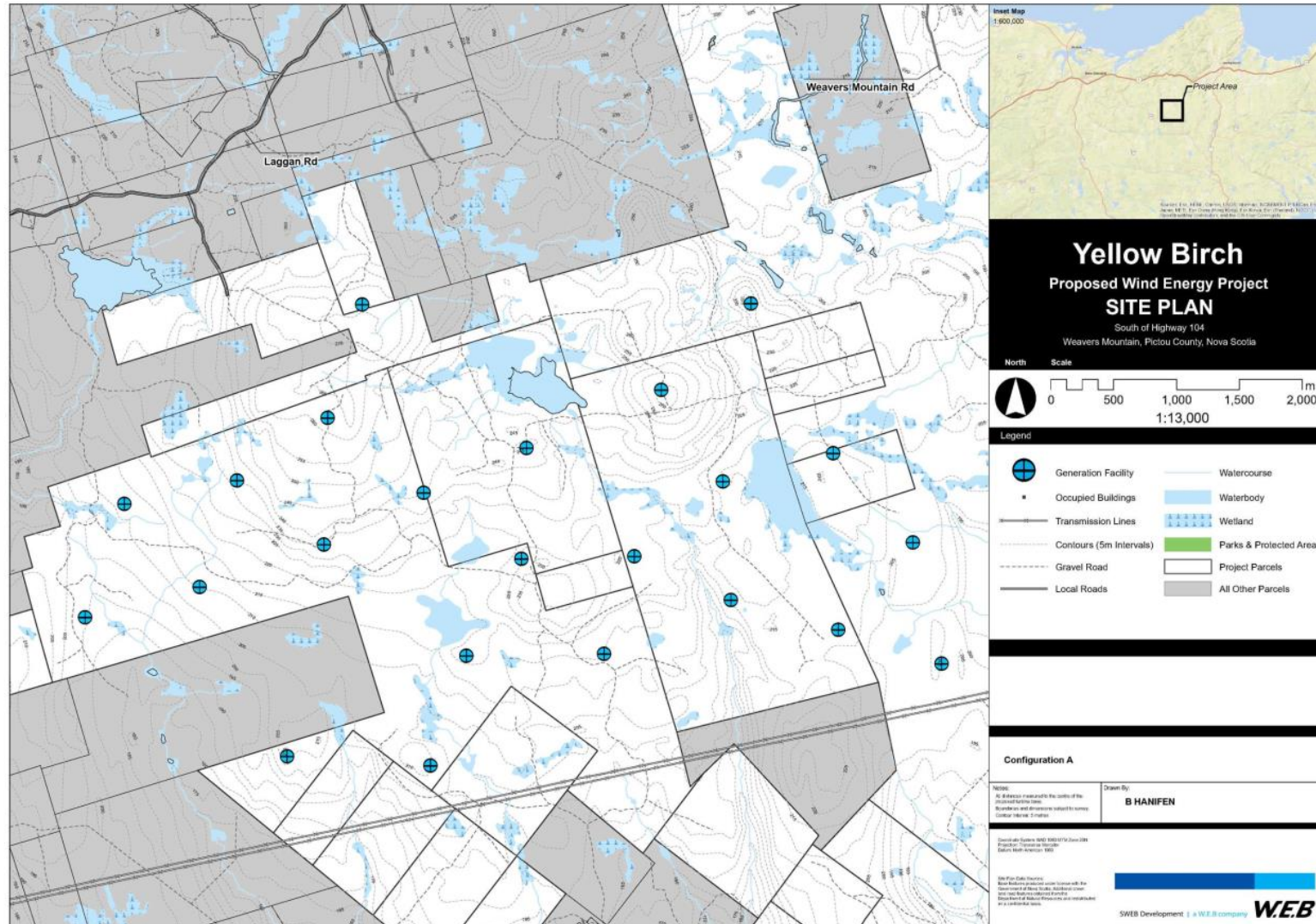
Yellow Birch Wind Energy Project

W.E.B



- Between 59.8 MW to 149.6 MW
- 9-22 turbines
- Turbine nameplate capacities between 6.5 MW and 7.2 MW
- Located entirely on Private land
- Pictou County, south/southeast of Upper Barney's River
- Site selection based on a number of factors
 - Proximity to transmission lines
 - Wind resource
 - Minimal receptors in the area
 - Existing infrastructure (such as forestry roads)

Yellow Birch Wind Project Area

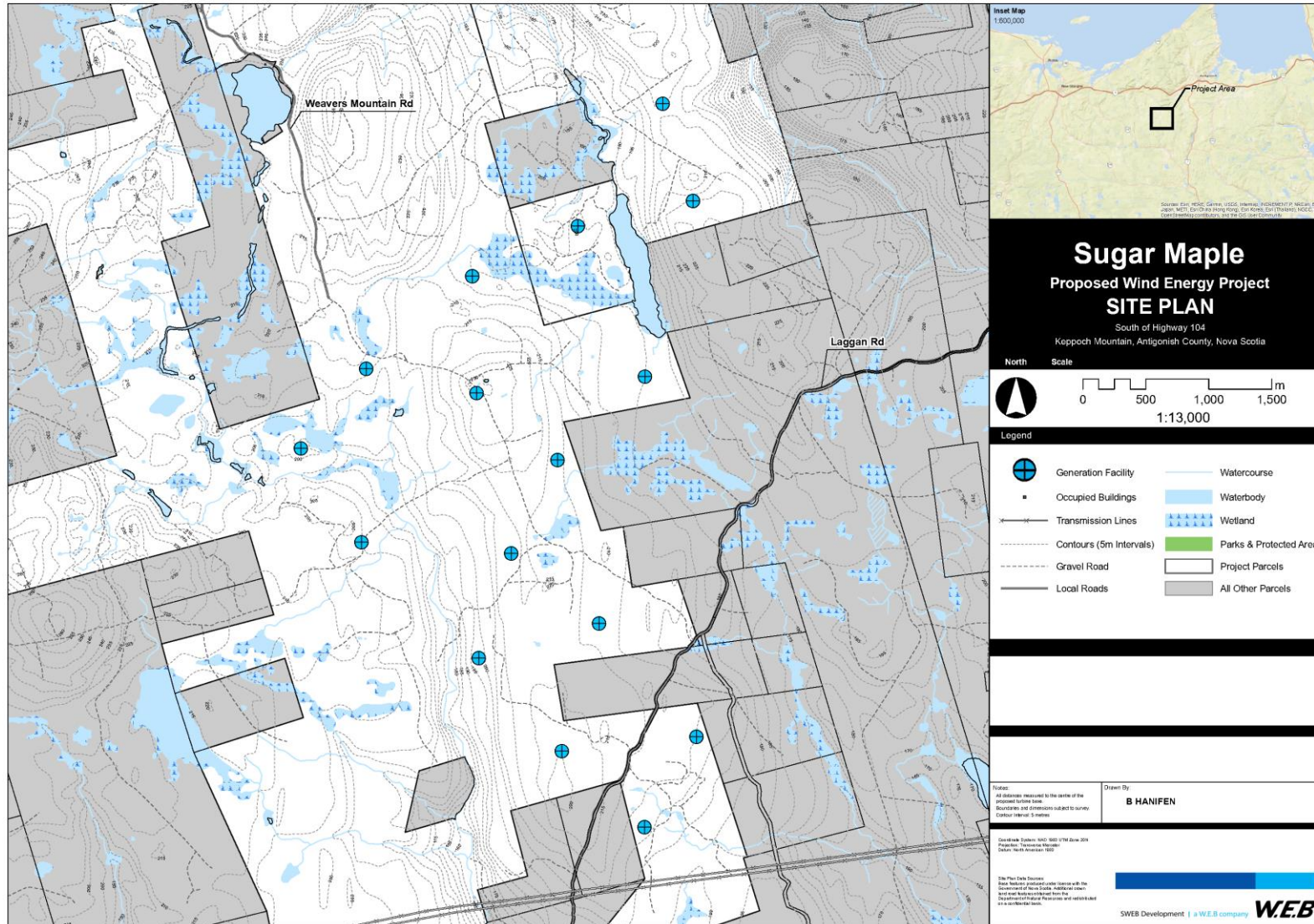


Sugar Maple Wind Energy Project



- Between 59.8 MW to 112.0 MW
- 9-16 turbines
- Turbine nameplate capacities between 6.5 MW and 7.2 MW
- Located entirely on Private land
- Pictou County, due east of Upper Barney's River (adjacent to Yellow Birch Wind Energy Project)
- Site selection based on a number of factors
 - Proximity to transmission lines
 - Wind resource
 - Minimal receptors in the area
 - Existing infrastructure (such as forestry roads)

Sugar Maple Wind Project Area



Work Completed to Date for both projects



- Raw wind data collection ongoing via meteorological towers and LiDAR units
- Environmental assessment commenced in the summer of 2023 and will be completed throughout 2024/2025
- Stakeholder engagement began in 2021 and will continue throughout project development, construction, and operation
- First Nation engagement began in 2021 and will continue throughout project development, construction, and operation
- Project design and layout optimization underway

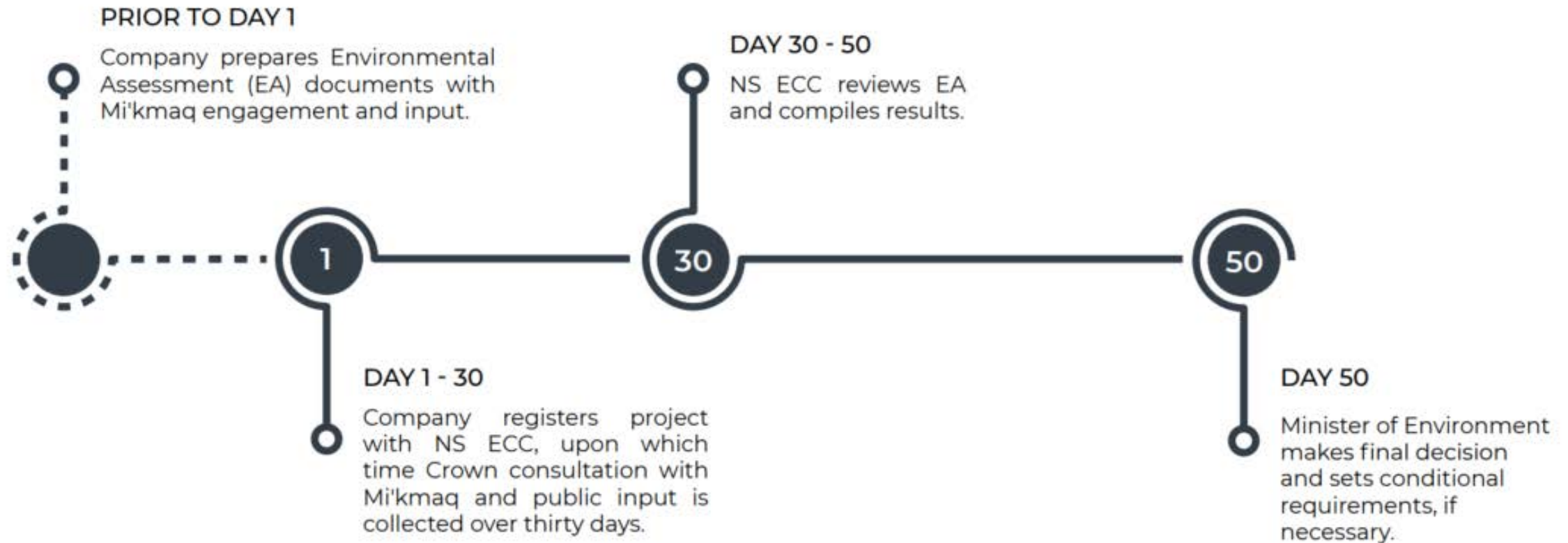
Impact Mitigation

ENVIRONMENTAL ASSESSMENT CLASS I PROCESS

- Is required by Nova Scotia Environment & Climate Change (NS ECC) to ensure that a Project's environmental effects are minimized.
- Identifies and evaluates environmental effects at an early stage in Project development, and recommends mitigation to reduce adverse impacts.
- Public consultation is an integral part of this process. Community is invited to comment on the environmental assessment during the review period.
- Reviewed by NS ECC and other relevant government agencies.
- Nova Scotia Minister of the Environment only provides approval once satisfied that environmental effects have been adequately assessed and addressed.



Impact Mitigation



Impact Mitigation

TYPICAL BASELINE STUDIES



AVIFAUNA



WETLANDS



VISUAL
AESTHETICS



AIR QUALITY



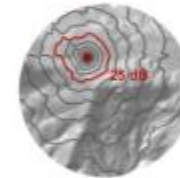
GENERAL
WILDLIFE



WATERCOURSES
& FISH HABITAT



CULTURAL
& HERITAGE
RESOURCES



SOUND
MODELING



PLANTS



GROUNDWATER
& GEOLOGY



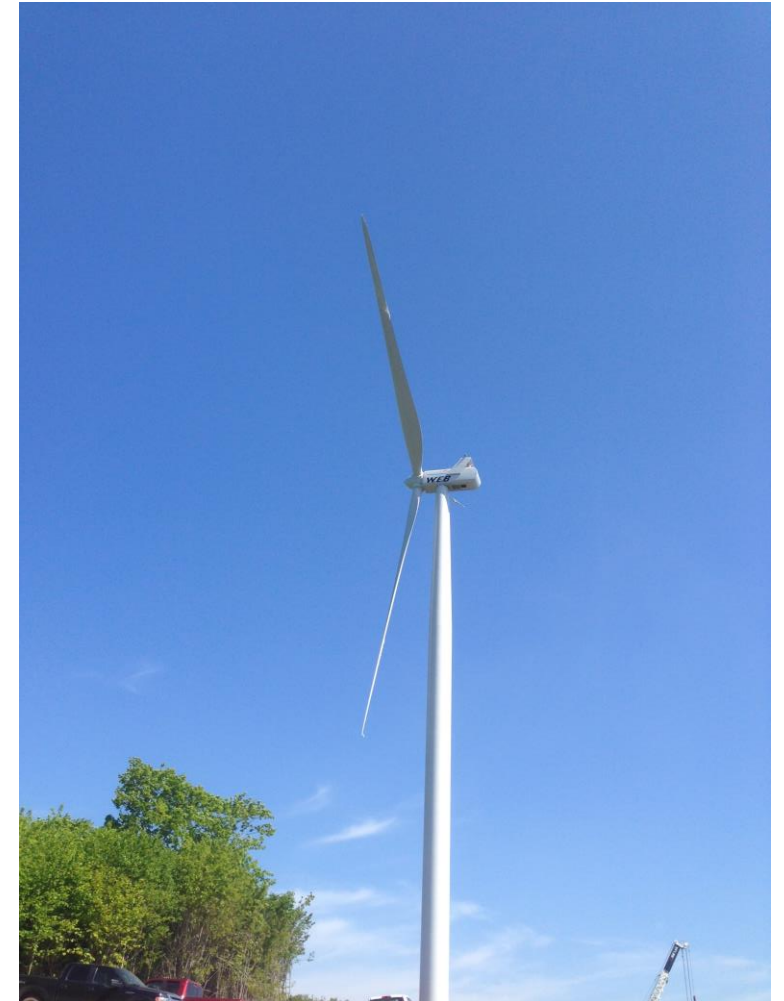
SOCIOECONOMIC
CONDITIONS

Addressing Previous Feedback

Erosion and Sediment Control

The project's Environmental Assessment will include the following:

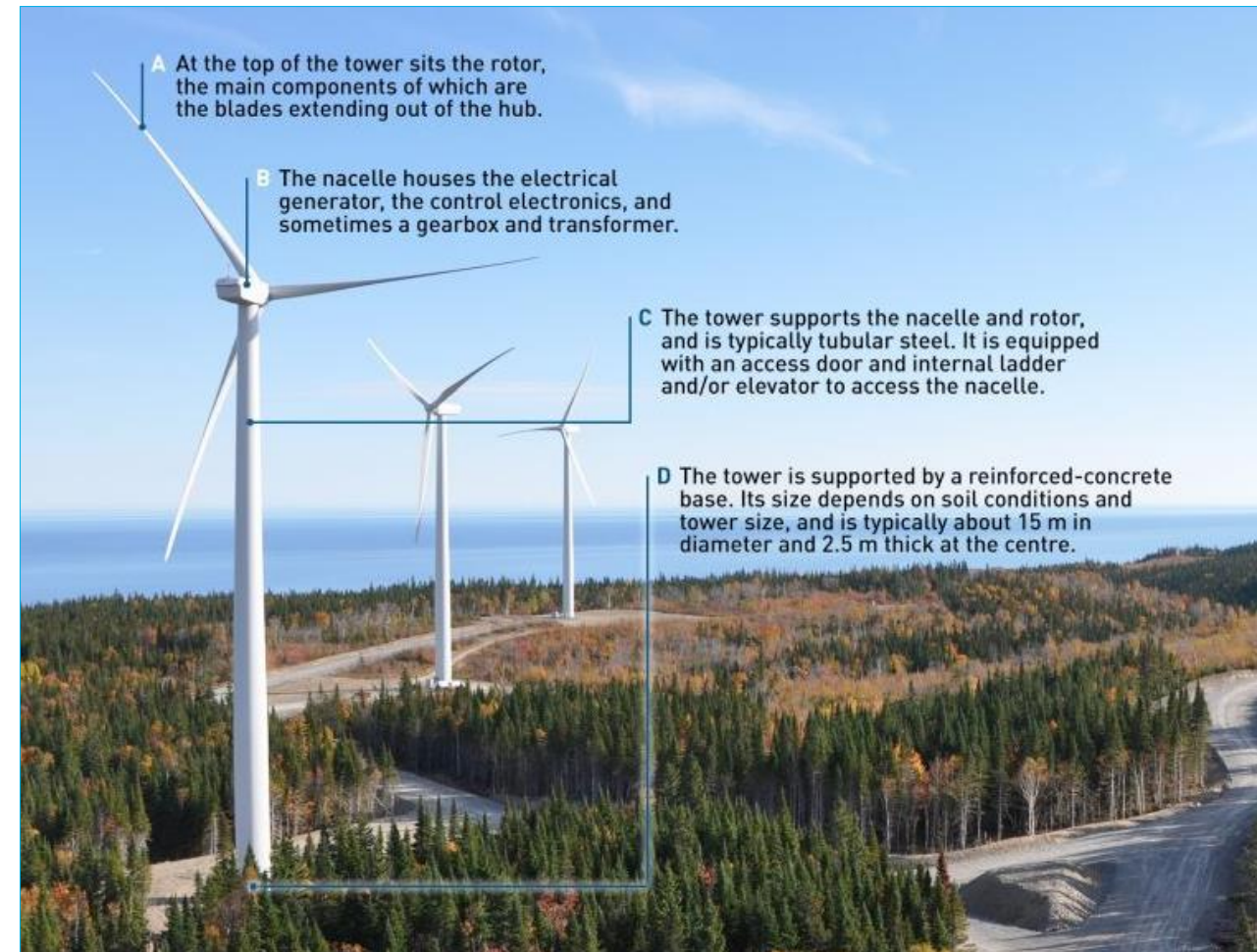
- Examining the impact of the project on erosion and sediment
- A detailed plan of proposed activities to ensure erosion and sediment control will occur
- Methods to avoid or mitigate impact on erosion and sediment



Addressing Previous Feedback

Turbines

- Projects will use wind turbines with hub heights in the range of 118 m to 125 m and rotor diameters of up to 163 m
- During extreme weather events, the turbines will stop power production at 90-108 km/hour



Addressing Previous Feedback

Watercourses and Wetlands

The Project's Environmental Assessment will include the following:

- Examining the impact of the project on nearby watercourses and wetlands
- A detailed plan of proposed activities to ensure efforts to mitigate impact on nearby watercourses and wetlands
- Methods to avoid or mitigate impacts to fish and fish habitat
- An environmental consultant will determine if any fish or fish habitat exists in any watercourses impacted by the project



Addressing Previous Feedback

Snowmobiles and Trails

- Winter access and plowing requirements are currently being reviewed by SWEB in collaboration with the Antigonish SnoDogs (snowmobile club)
- Historically, SWEB has only plowed one side of the road, just enough to get our service truck in, and leave the other side untouched
- Look into allocating extra trail space adjacent to the roads or power line corridors



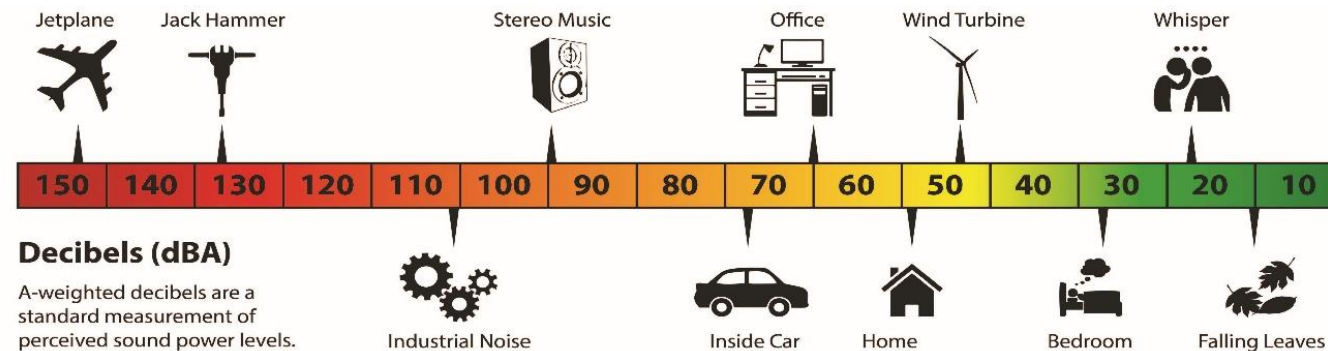
Site Access and Traffic

- Traffic during operation will be limited
- Access to the site will be gated and keys will only be provided to landowners, operations staff and suppliers, emergency services, and authorities having jurisdiction
- Look into submitting a traffic management plan for the construction period (if there is further concern)

Addressing Previous Feedback

Noise

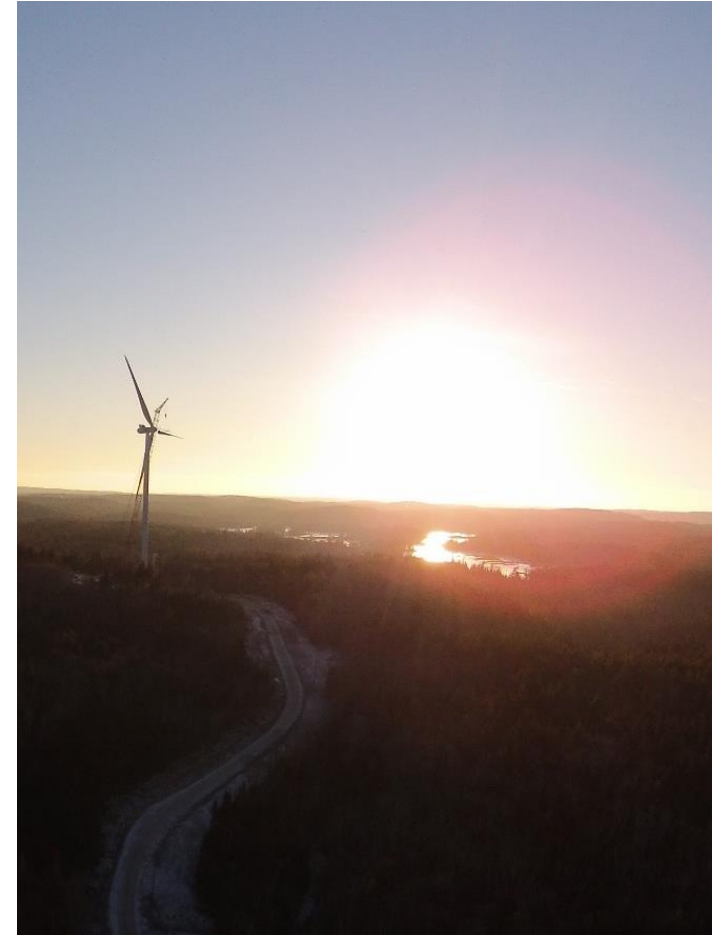
- Minimum setback of 1 km from all receptors
- Complete all necessary acoustic modelling prior to construction & post construction
 - Present all acoustic modelling findings to the public and any interested stakeholders
 - Submit all necessary noise modelling for noise impact review and approval
- Create a plan to react to any noise issues or complaints
- Follow all noise curtailment restrictions proposed on the project



Addressing Previous Feedback

Light Pollution & Aeronautical Lighting Systems

- Complete all necessary light modelling, including modelling shadow flicker, prior to construction
 - Present all findings to the public and any interested stakeholders & submit all necessary lighting permits and plans
- Explore aeronautical lighting systems options which use sensors and only illuminate during times of need (i.e. when an aircraft is approaching), as opposed to continuous illumination
- Complete all necessary lighting monitoring post construction and will create a plan to react to any light issues or complaints



Addressing Previous Feedback



Decommissioning

- SWEB will be obliged by its contractual relationship with NSPI to decommission the turbines
 - The decommissioning plan will outline the process in which equipment and materials will be removed from the site in the event that Proponent is no longer able to construct or operate the project
 - NSPI will hold \$20,000 per MW in security (up to \$2.99 million for Yellow Birch & Sugar Maple)
 - The plan will be set prior to construction commencement
- SWEB also has decommissioning obligations by way of a security that is provided under certain land contracts that are associated with the proposed projects

Project Benefits

- Local labour, services, and materials
- Direct and indirect benefits for various stakeholders and First Nations communities with details on partnership to be released in the coming months
- SWEB is currently working with First Nation communities to establish partnerships and a partnership structure. Both of these projects will be majority-owned by one or more First Nation communities
- Positive impact on local businesses and will result in employment opportunities in addition to tax revenue for municipal, provincial, and federal governments
- Significantly offset carbon dioxide (CO₂) emissions from Nova Scotia's current electricity production
- Both projects to produce enough clean power for up to 121,000 homes
- A portion of the project's revenue will be allocated to a project-specific community liaison committee (CLC) annually and administered by this community organization



Proposed Project Timeline



1. Land acquisition

2. Preliminary Site Analysis & Design

3. First Nation community and stakeholder engagement

4. PPA Award & Ongoing Interconnection Studies

5. Environmental Assessment Field Surveys & Reporting

6. Project Design Completed

7. WTGs Ordered

8. Construction Start (civil and electrical)

9. WTG Delivery

10. Construction Completion

11. Operations (25+ years)

*Project Development
(2022 – 2027)*

*Project Construction
(June 2027)*

*Project Operations
(December 2028)*

Question & Answer Period

W.E.B



Continuing Discussions



Project Contact Information

Jason Parisé
Development Director

Office: +1 902-431-0564
Mobile: +1 902 329 1494

Yellowbirch@sw eb.energy

Sugarmaple@sw eb.energy

<https://www.yellowbirchwindenergy.ca/>

<https://www.sugarmaplewindenergy.ca/>

SWEB Contact Information

SWEB Development LP
6080 Young St, Suite 403
Halifax, NS
B3K 5L2

Office: (902) 431-0564
Toll Free: +1 (844) 468 3134

contact@sw eb.energy

www.sw eb.energy

All project information is available for review in our Halifax office at
6080 Young Street, Suite 403 and can be mail upon request

W.E.B

Thank you