

**Weavers Mountain Wind Energy Project**  
Receptors



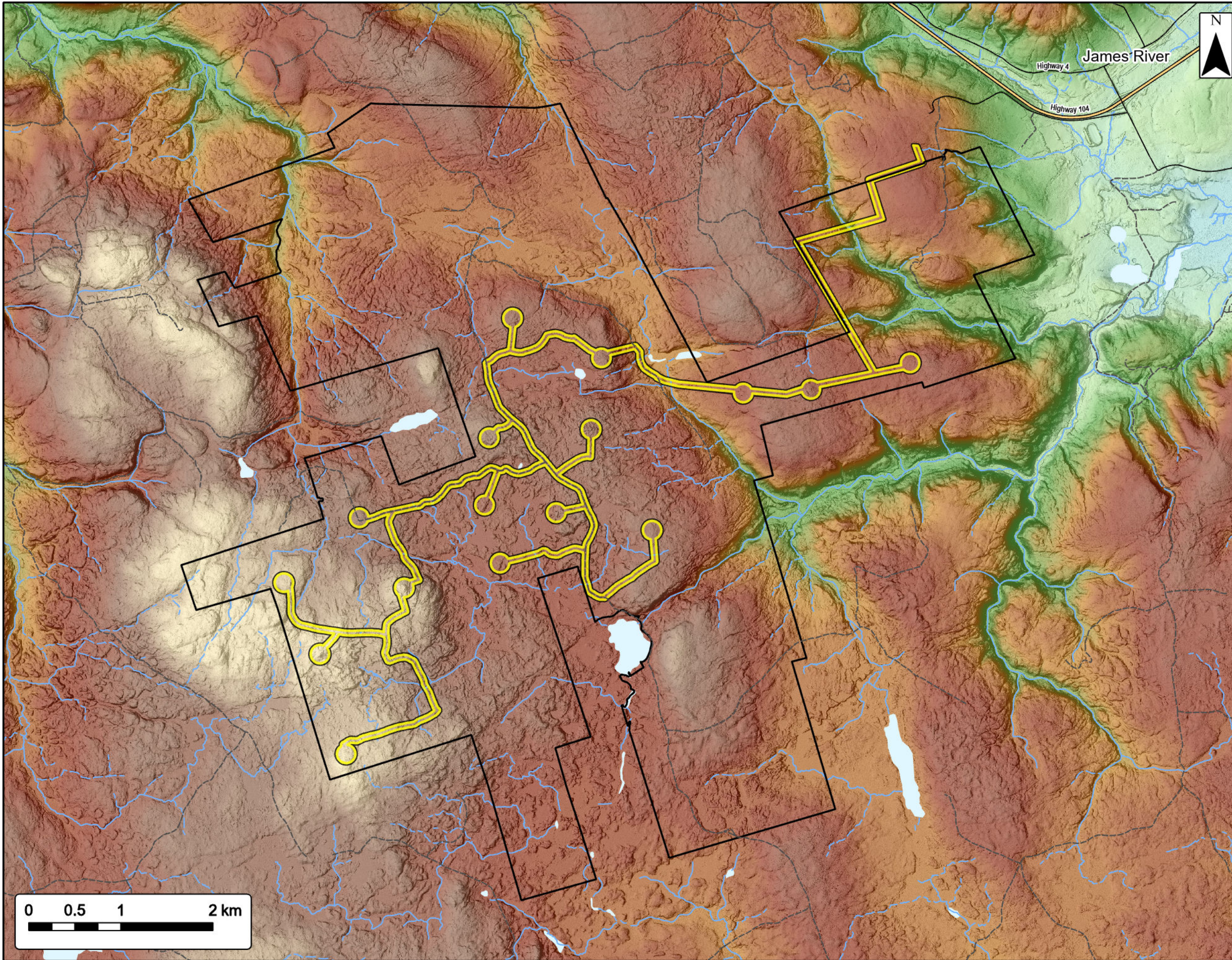
- Study Area
- Assessment Area
- Proposed Turbine Location
- Non Participating Buildings Within 2km of Assessment Area
- 2 km Assessment Area Buffer
- Transportation**
- Trans-Canada Highway
- Road
- Unpaved Road
- Water Features**
- Mapped Stream
- Mapped Indefinite Stream
- Mapped Wet Area



Coordinate System: NAD83 UTM Zone 20N Sources: Esri Basemaps, GeoNOVA, SNSIS, NRCan, NSNRR, ACCDC, IBA Canada


Date: May 2023	Project #: 21-8224
Scale: 1:45,000	Drawing #: <b>7.2</b>
Drawn By: K. Wallace	
Checked By: M. Savelle	







**Weavers Mountain Wind Energy Project**  
Geomorphology





Study Area 

Assessment Area 


**Transportation**


Trans-Canada Highway 


Road 

Unpaved Road 

**Water Features**


Mapped Stream 

Mapped Indefinite Stream 

Mapped Lakes and Rivers 

**Elevation (m)**

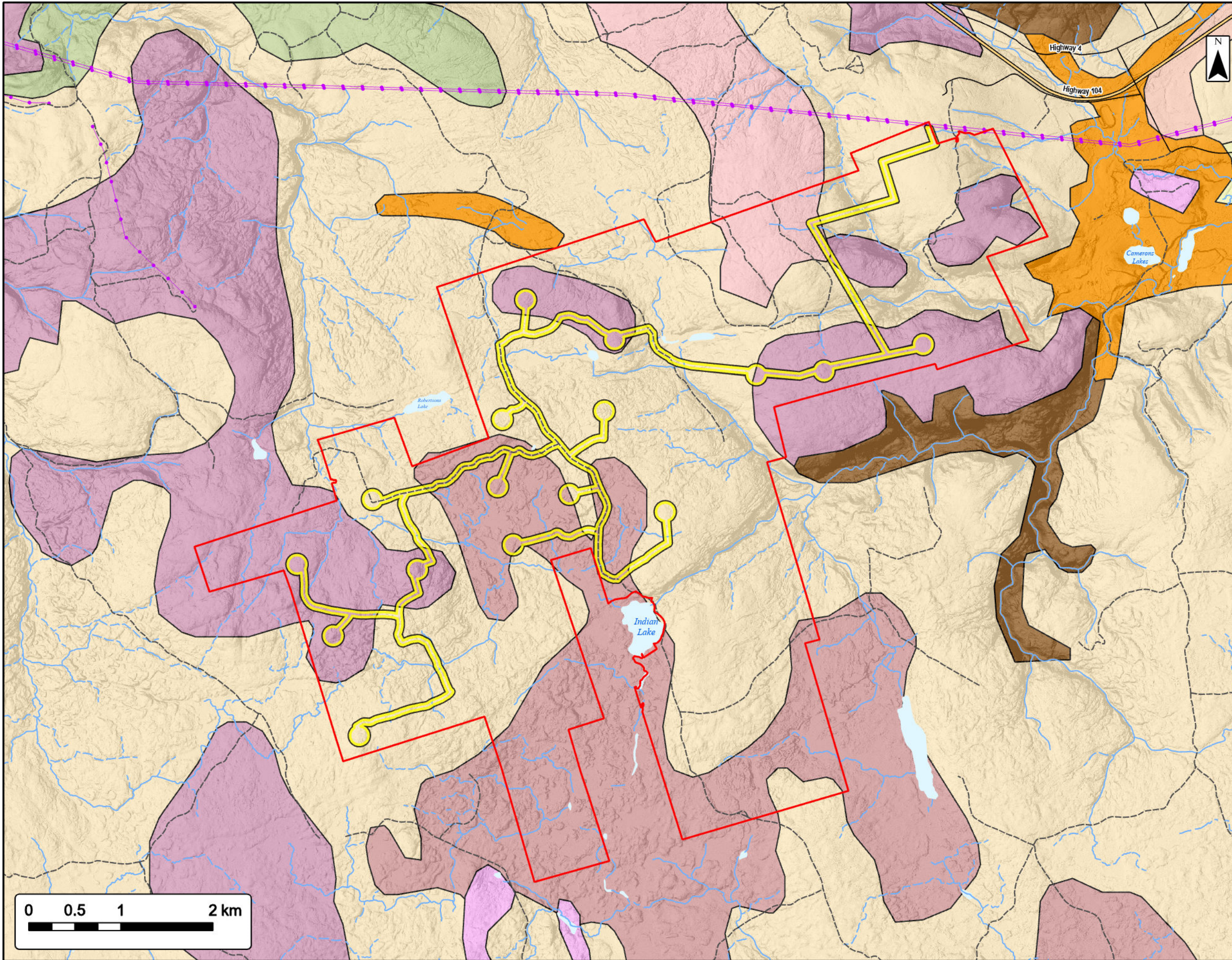
300  
250  
210  
180  
145  
110  
80  
0




Coordinate System: NAD83 UTM Zone 20N Sources: Esri Basemaps, GeoNOVA, SNSIS, NRCan, NSNRR, ACCDC, IBA Canada

Date:	May 2023	Project #:	21-8224
Scale:	1:40,000	Drawing #:	<b>7.3</b>
Drawn By:	K. Wallace		
Checked By:	M. Savelle		





**Weavers Mountain Wind Energy Project**  
*Surficial Geology*



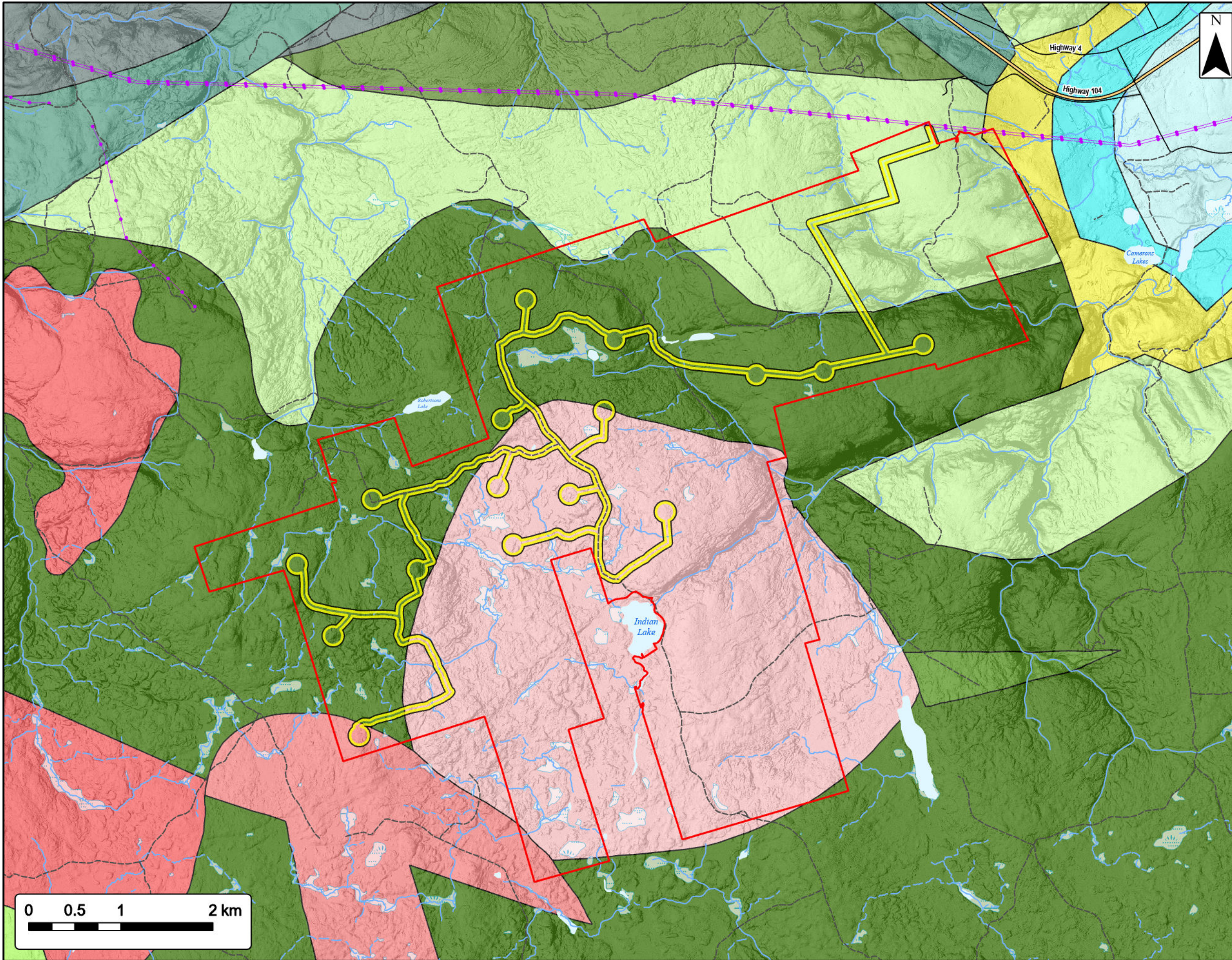
- Study Area
- Assessment Area
- Surficial Geology By Unit**
- Alluvial Deposits
- Bedrock
- Colluvial Deposits
- Hummocky Ground Moraine
- Kame Fields and Esker Systems
- Organic Deposits
- Outwash Fans, Deltas, and Valley Train Deposits
- Residium
- Silty Till Plain
- Stony Till Plain
- Transportation**
- Trans-Canada Highway
- Road
- Unpaved Road
- Utilities (line)**
- Existing Transmission Lines
- Water Features**
- Mapped Stream
- Mapped Indefinite Stream
- Mapped Lakes and Rivers



Coordinate System: NAD83 UTM Zone 20N Sources: Esri Basemaps, GeoNOVA, SNSIS, NRCan, NSNRR, ACCDC, IBA Canada

Date:	May 2023	Project #:	21-8224
Scale:	1:40,000	Drawing #:	<b>7.4</b>
Drawn By:	K. Wallace		
Checked By:	M. Savelle		





**Weavers Mountain Wind Energy Project**  
*Bedrock Geology*

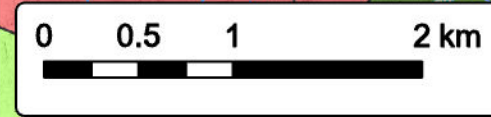


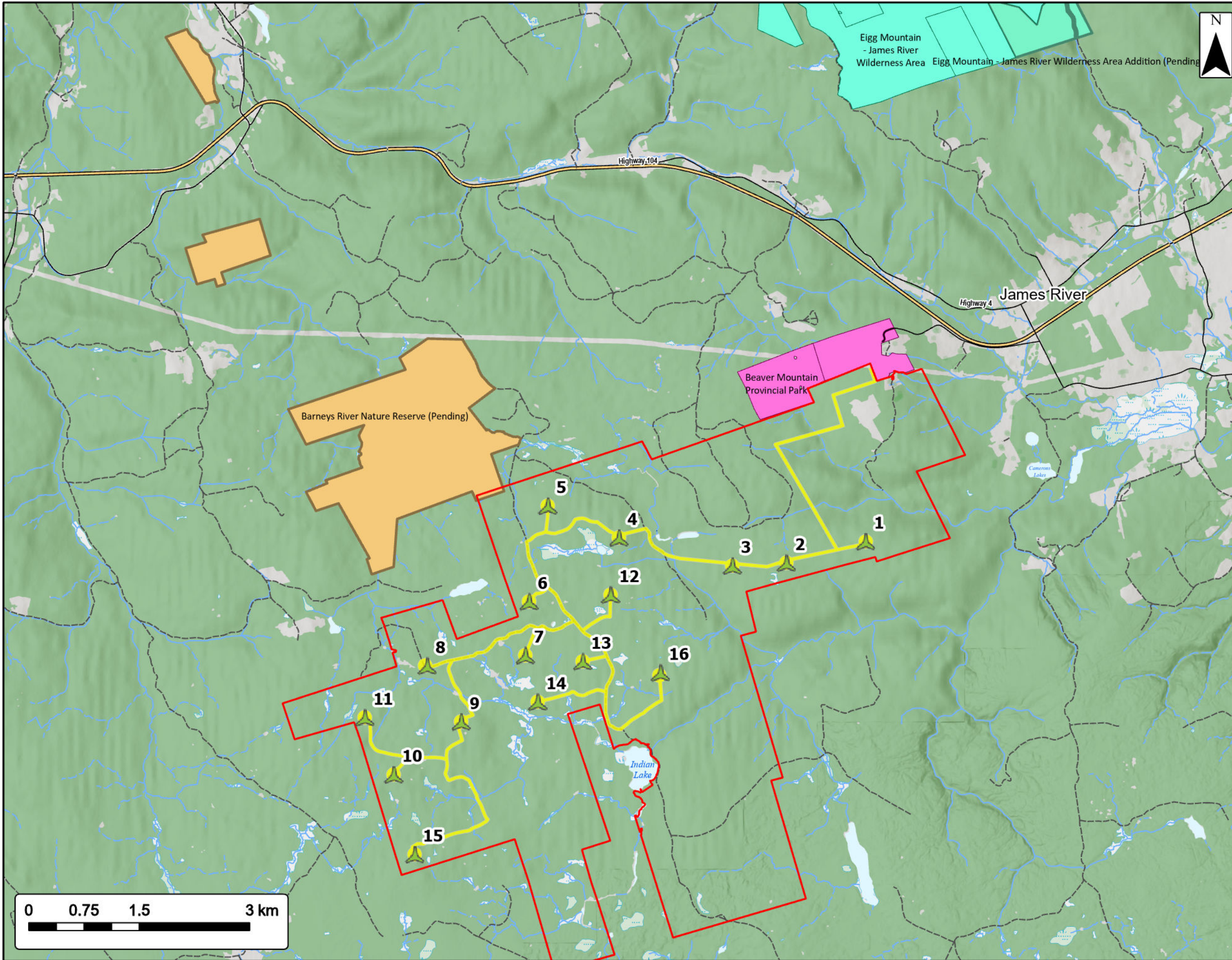
- Assessment Area
- Study Area
- Bedrock Geology By Formation**
- Pugwash Mine, Forbes Lake, Addington, Wallace Brook and Lakevale Formations
- Lower and Middle Windsor Groups undivided: northern mainland
- Horton Group: northern mainland
- Beechhill Cove, Ross Brook, French River, McAdam, Moydart and Stonehouse Formations
- Bears Brook Formation
- Georgeville Group
- South Rights Formation
- James River Formation
- Maple Ridge Formation
- Keppock Formation
- Devonian - Carboniferous Granite: Cape Breton Island
- Neoproterozoic granitoid
- Neoproterozoic diorite - gabbro
- Utilities (line)**
- Existing Transmission Lines
- Water Features**
- Mapped Stream
- Mapped Indefinite Stream
- Mapped Wet Area



Coordinate System: NAD83 UTM Zone 20N Sources: Esri Basemaps, GeoNOVA, SNSIS, NRCan, NSNRR, ACCDC, IBA Canada

Date:	May 2023	Project #:	21-8224
Scale:	1:40,000	Drawing #:	<b>7.5</b>
Drawn By:	K. Wallace		
Checked By:	M. Savelle		





**Weavers Mountain Wind Energy Project**  
Protected Areas

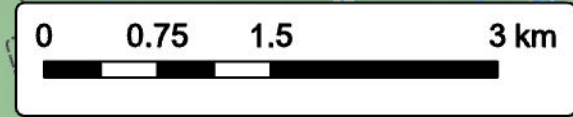


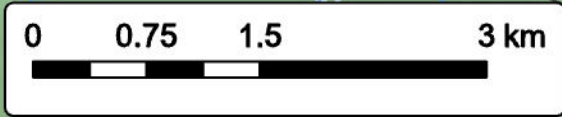
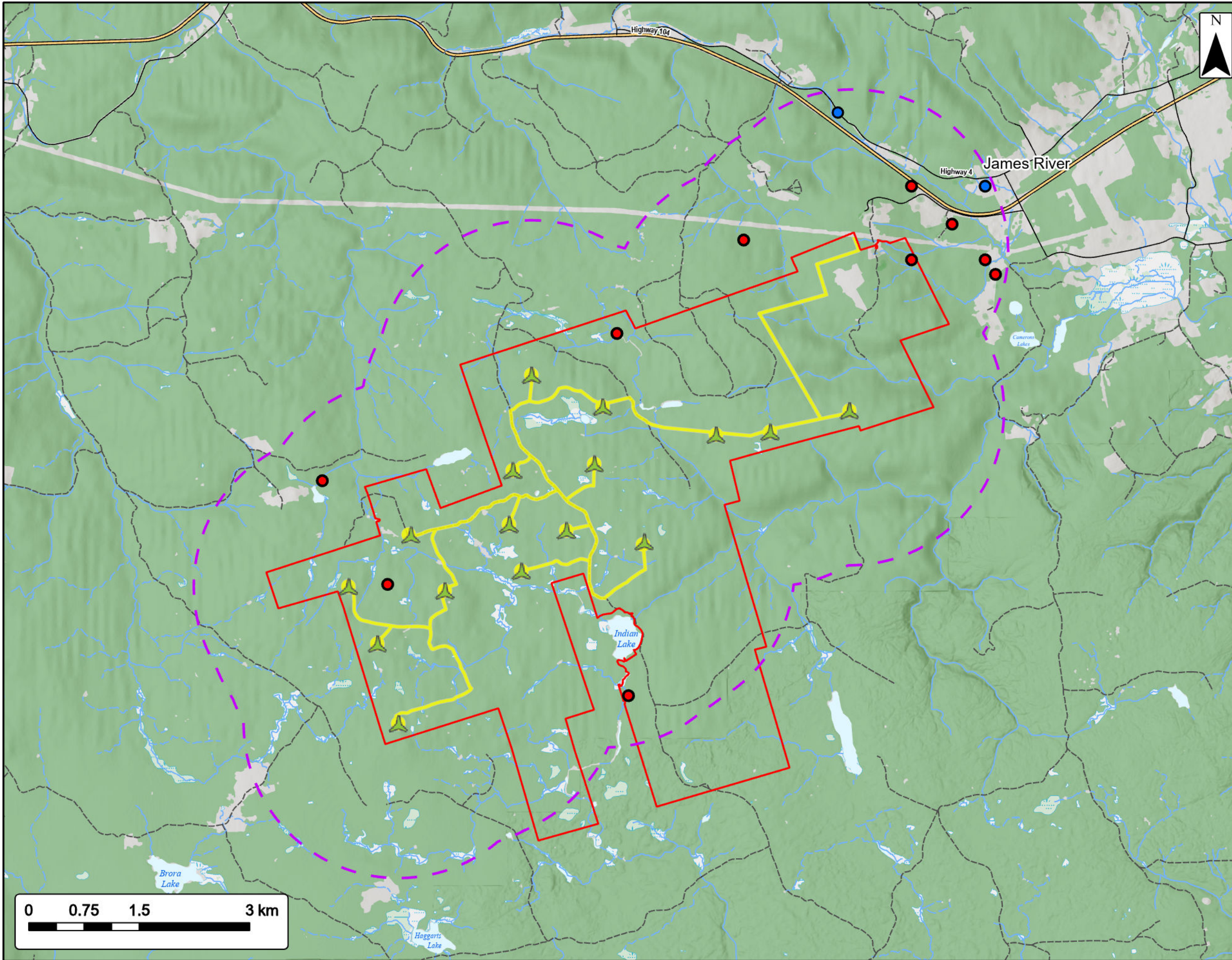
Study Area	
Assessment Area	
Proposed Turbine Location	
<b>Type of Pending or Proposed Protection</b>	
Nature Reserve	
Wilderness Area	
<b>Type of Existing Protection</b>	
Wilderness Area	
Provincial Park	
<b>Transportation</b>	
Trans-Canada Highway	
Road	
Unpaved Road	
<b>Water Features</b>	
Mapped Stream	
Mapped Indefinite Stream	
Mapped Lakes and Rivers	
Mapped Wet Area	



Coordinate System: NAD83 UTM Zone 20N  
Sources: Esri Basemaps, GeoNOVA, SNSIS, NRCan, NSNRR, ACCDC, IBA Canada

Date:	May 2023	Project #:	21-8224
Scale:	1:50,000	Drawing #:	<b>7.6</b>
Drawn By:	K. Wallace		
Checked By:	M. Savelle		





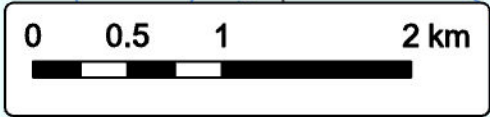
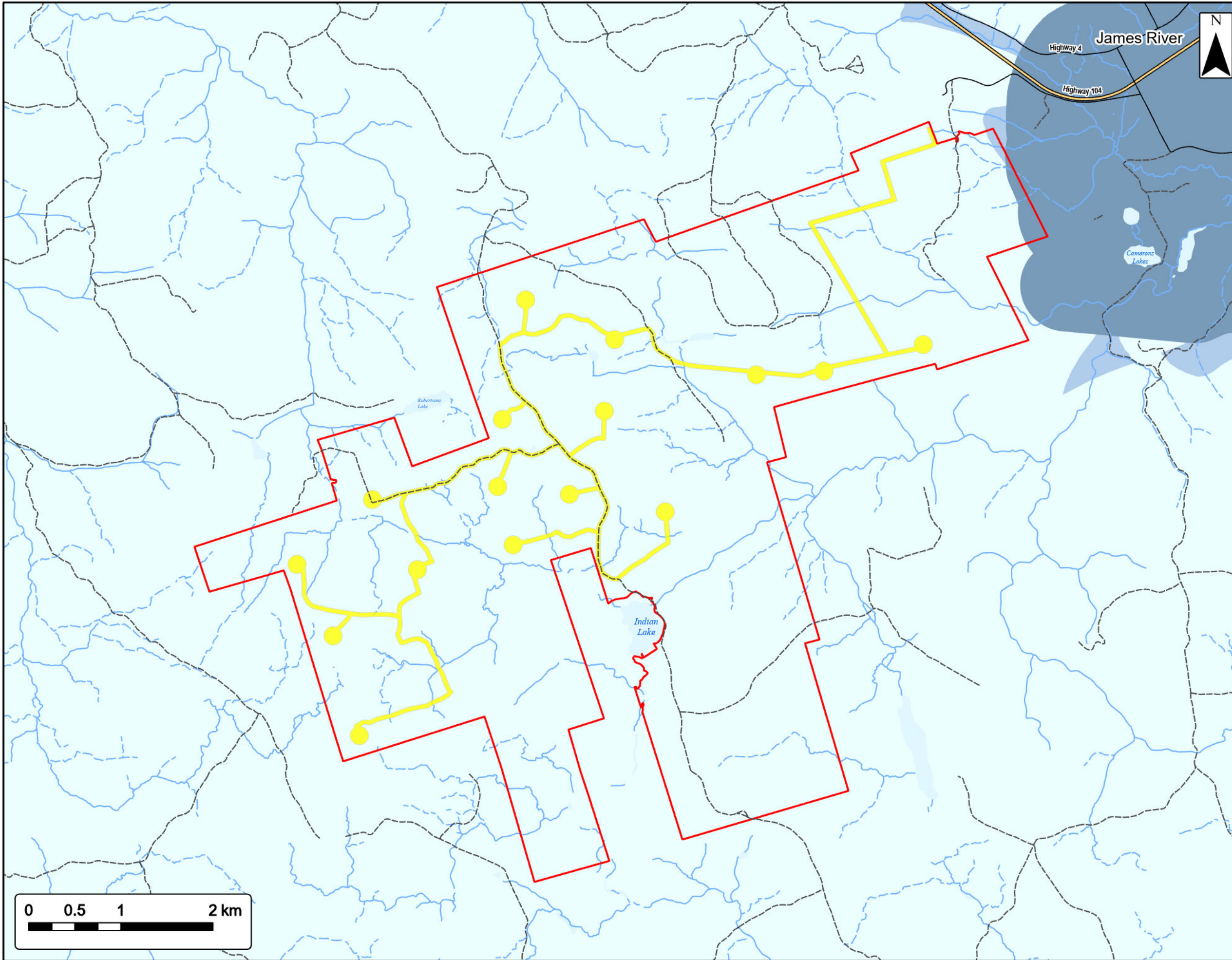
### Weavers Mountain Wind Energy Project Groundwater Wells

SWEB Development  
a W.E.B company  
[sweb.energy](http://sweb.energy)

---

Study Area	
Assessment Area	
Proposed Turbine Location	
2 km Assessment Area Buffer	
<b>Groundwater Well</b>	
DRILLED	
DUG	
<b>Transportation</b>	
Trans-Canada Highway	
Road	
Unpaved Road	
<b>Water Features</b>	
Mapped Stream	
Mapped Indefinite Stream	
Mapped Lakes and Rivers	
Mapped Wet Area	

Coordinate System: NAD83 UTM Zone 20N		Sources: Esri Basemaps, GeoNOVA, SNSIS, NRCan, NSNRR, ACCDC, IBA Canada	
Date:	May 2023	Project #:	21-8224
Scale:	1:50,000	Drawing #:	<b>7.7</b>
Drawn By:	K. Wallace	<b>7.7</b>	
Checked By:	M. Savelle		



**Weavers Mountain Wind Energy Project**  
Karst Risk



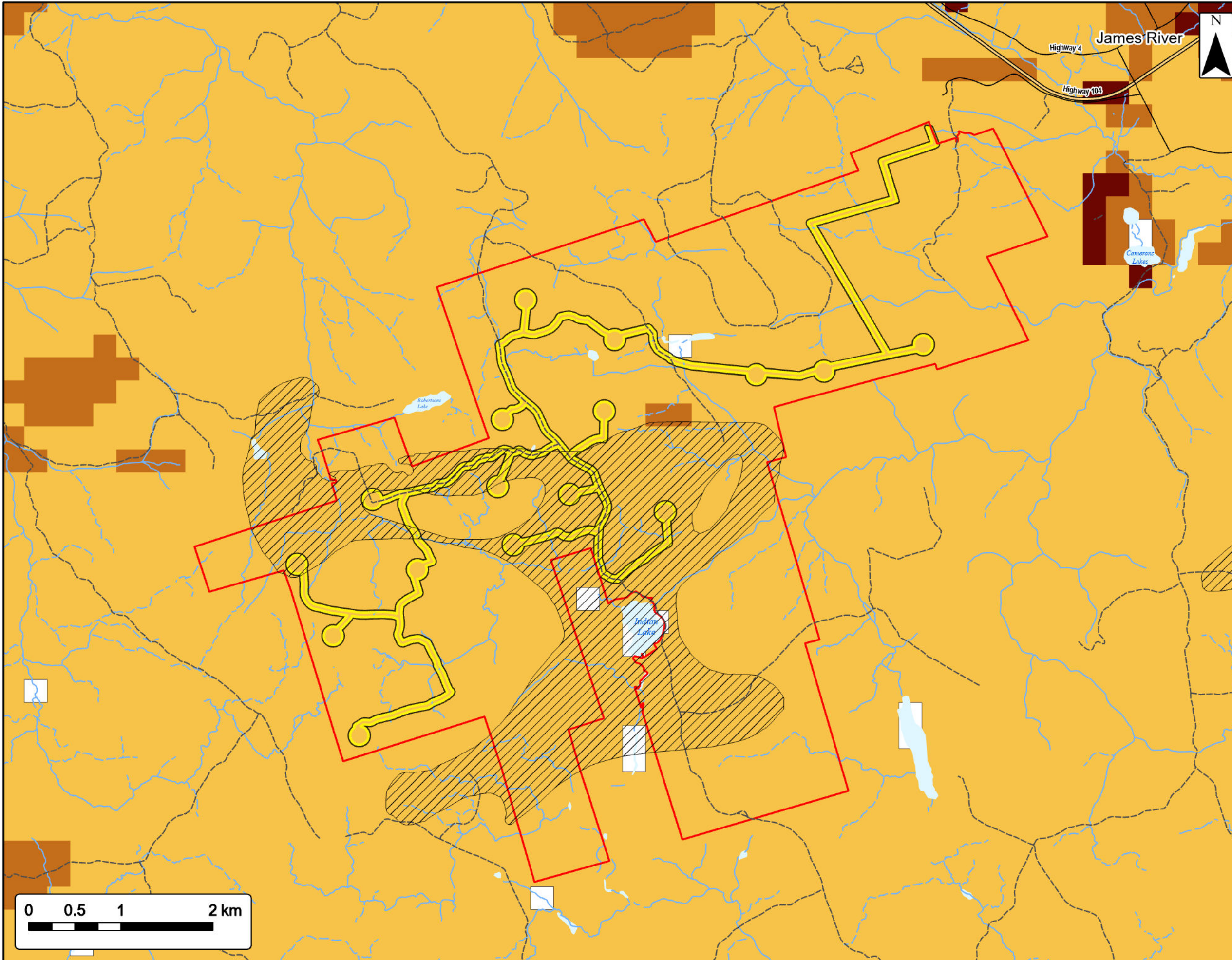
Study Area	
Assessment Area	
<b>Karst Risk</b>	
High Risk	
Medium Risk	
Low Risk	
<b>Transportation</b>	
Trans-Canada Highway	
Road	
Unpaved Road	
<b>Water Features</b>	
Mapped Stream	
Mapped Indefinite Stream	
Mapped Lakes and Rivers	



Coordinate System: NAD83 UTM Zone 20N  
Sources: Esri Basemaps, GeoNOVA, SNSIS, NRCan, NSNRR, ACCDC, IBA Canada

Date:	May 2023	Project #:	21-8224
Scale:	1:40,000	Drawing #:	<b>7.8</b>
Drawn By:	K. Wallace		
Checked By:	M. Savelle		





**Weavers Mountain Wind Energy Project**  
Radon and Uranium Potential

SWEB Development  
a W.E.B company  
sweb.energy

**W.E.B**

Study Area: [Red outline symbol]

Assessment Area: [Yellow outline symbol]

**Relative Risk of Uranium in Bedrock Wells**

Medium Risk: [Hatched pattern symbol]

**Radon Potential**

High (171-275): [Dark red color swatch]

Medium (121-170): [Brown color swatch]

Low (11-120): [Light yellow color swatch]

Water Feature/No Data (0-10): [White color swatch]

**Transportation**

Trans-Canada Highway: [Thick black line symbol]

Road: [Thin solid black line symbol]

Unpaved Road: [Dashed black line symbol]

**Water Features**

Mapped Stream: [Solid blue line symbol]

Mapped Indefinite Stream: [Dashed blue line symbol]

Mapped Lakes and Rivers: [Blue area symbol]

Coordinate System: NAD83 UTM Zone 20N  
Sources: Esri Basemaps, GeoNOVA, SNSIS, NRCAN, NSNRR, ACCDC, IBA Canada

Date:	May 2023	Project #:	21-8224
Scale:	1:40,000	Drawing #:	<b>7.9</b>
Drawn By:	K. Wallace		
Checked By:	M. Savelle		

**strum**  
CONSULTING

