

Weavers Mountain Wind Energy Project
Arsenic Risk

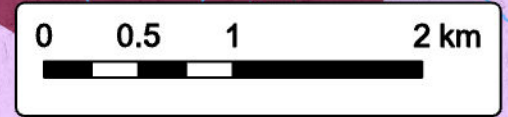


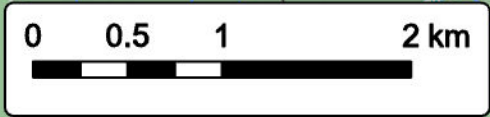
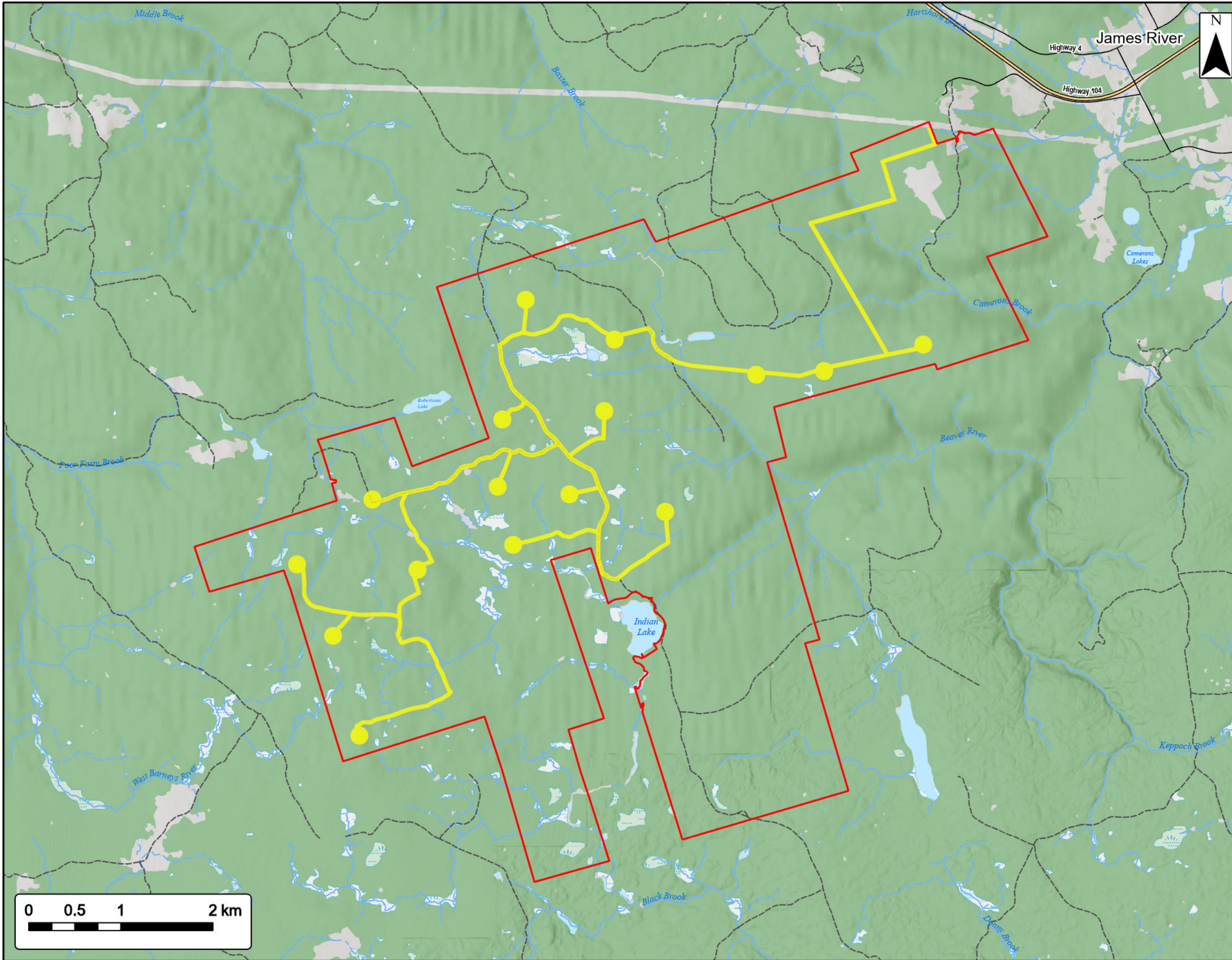
- Study Area
- Assessment Area
- Proposed Turbine Location
- Arsenic Risk in Bedrock Water Wells**
- High Risk
- Medium Risk
- Low Risk
- Transportation**
- Trans-Canada Highway
- Road
- Unpaved Road
- Water Features**
- Mapped Stream
- Mapped Indefinite Stream
- Mapped Lakes and Rivers



Coordinate System: NAD83 UTM Zone 20N Sources: Esri Basemaps, GeoNOVA, SNSIS, NRCan, NSNRR, ACCDC, IBA Canada

Date:	May 2023	Project #:	21-8224
Scale:	1:40,000	Drawing #:	7.10
Drawn By:	K. Wallace		
Checked By:	M. Savelle		





Weavers Mountain Wind Energy Project
 Desktop Identified Freshwater Features



Study Area	
Assessment Area	
Transportation	
Trans-Canada Highway	
Road	
Unpaved Road	
Water Features	
Mapped Stream	
Mapped Indefinite Stream	
Mapped Lakes and Rivers	
Mapped Wet Area	



Coordinate System: NAD83 UTM Zone 20N
 Sources: Esri Basemaps, GeoNOVA, SNSIS, NRCan, NSNRR, ACCDC, IBA Canada

Date:	May 2023	Project #:	21-8224
Scale:	1:40,000	Drawing #:	7.11
Drawn By:	K. Wallace		
Checked By:	M. Savelle		

