

Weavers Mountain Wind Energy Project
Watersheds

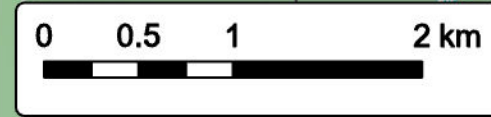


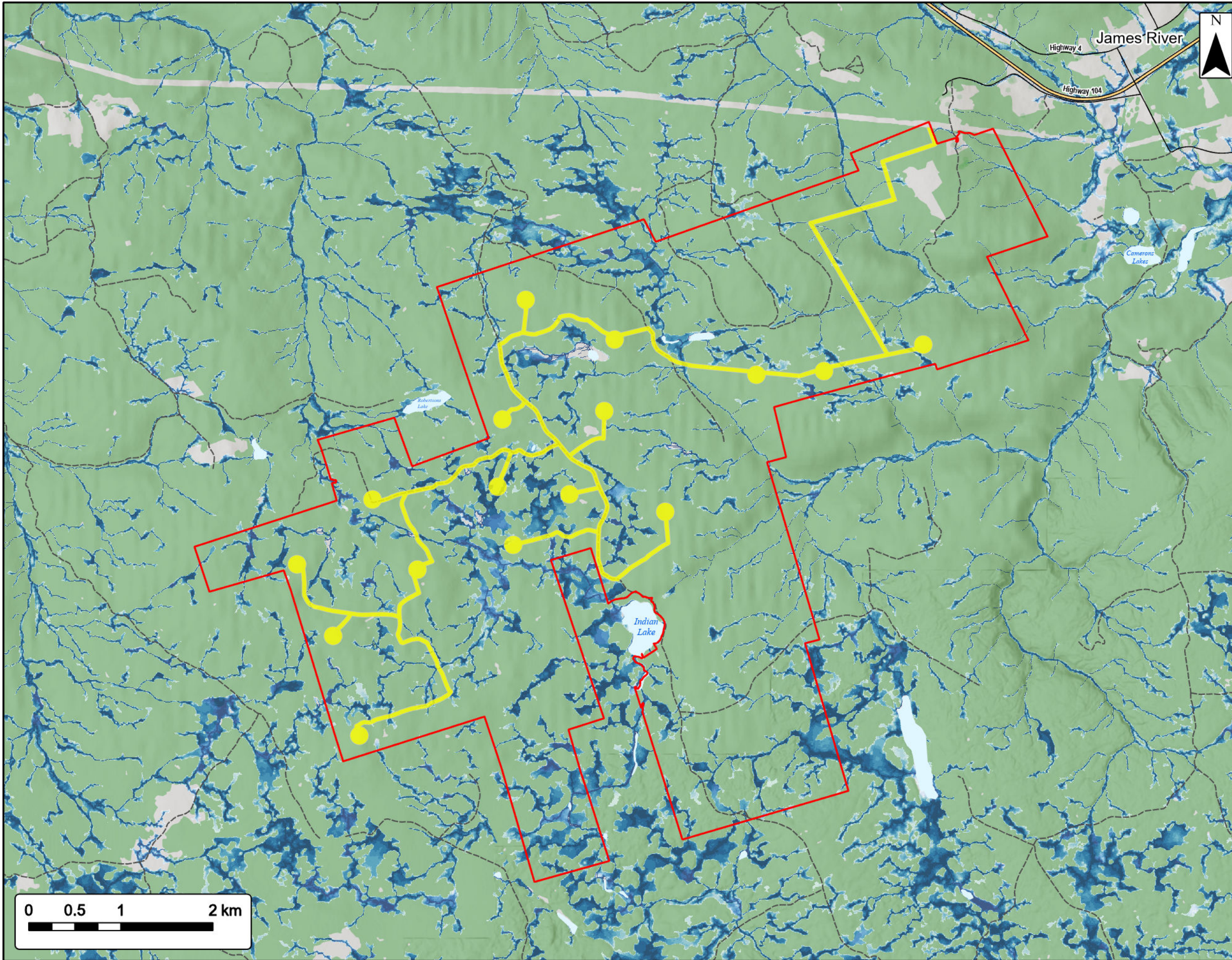
- Study Area
- Assessment Area
- Proposed Turbine Location
- Primary Watershed Boundary
- Secondary Watershed Boundary
- Transportation**
- Trans-Canada Highway
- Road
- Unpaved Road
- Water Features**
- Mapped Lakes and Rivers
- Mapped Wet Area



Coordinate System: NAD83 UTM Zone 20N
Sources: Eri Basemaps, GeoNOVA, SNSIS, NRCan, NSNRR, ACCDC, IBA Canada

Date: May 2023	Project #: 21-8224
Scale: 1:40,000	Drawing #: 7.13
Drawn By: K. Wallace	
Checked By: M. Savelle	





Weavers Mountain Wind Energy Project
Wet Area Mapping

SWEB Development
a W.E.B company
sweb.energy

Study Area

Assessment Area

0 - 10

10 - 20

20 - 30

30 - 40

40 - 50

50 - 60

60 - 70

70 - 80

80 - 90

90 - 100

Transportation

Trans-Canada Highway

Road

Unpaved Road

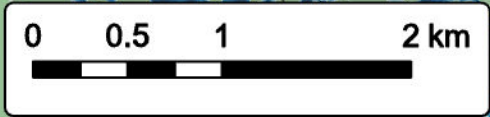
Water Features

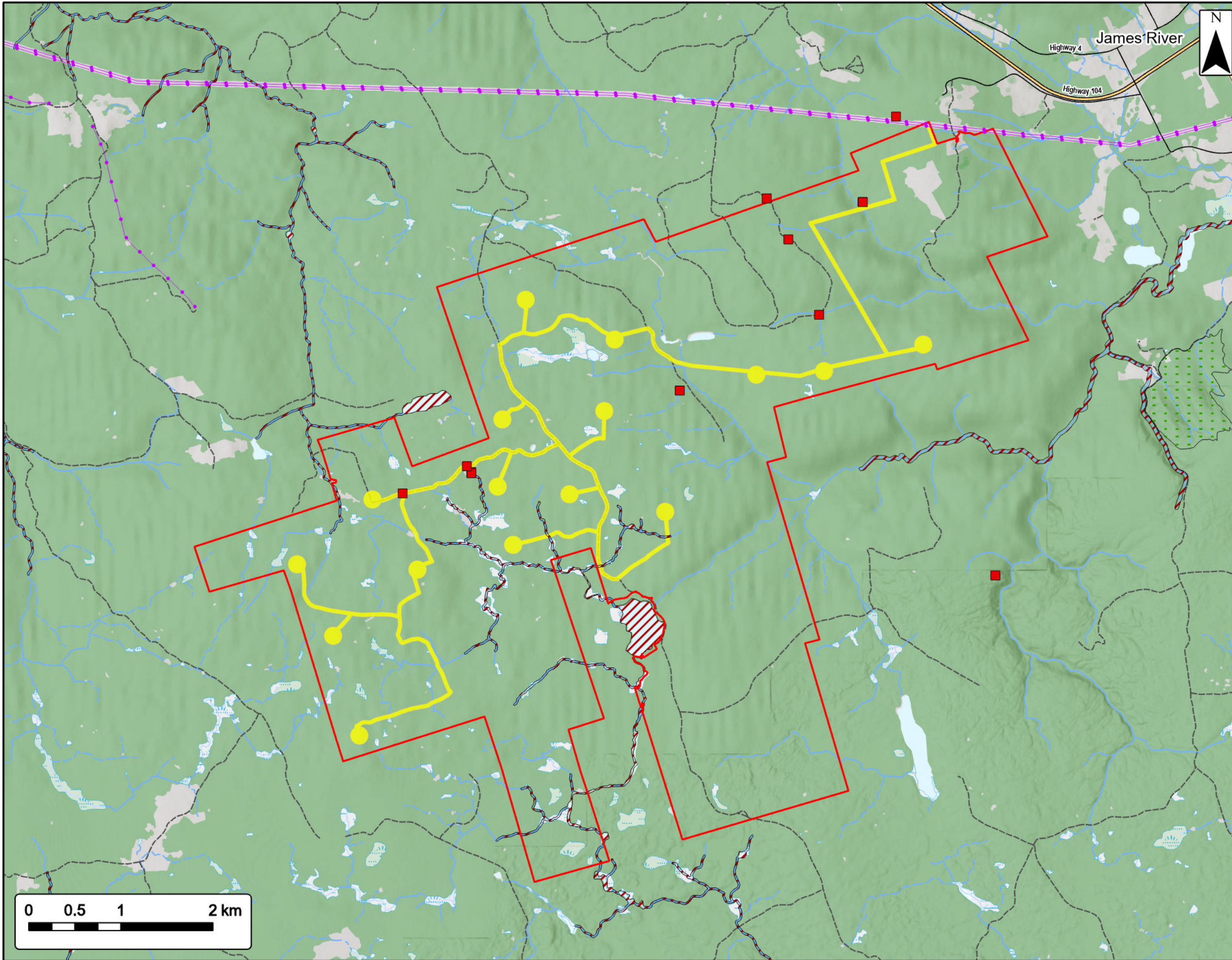
Mapped Lakes and Rivers

Coordinate System: NAD83 UTM Zone 20N Sources: Esri Basemaps, GeoNOVA, SNSIS, NRCan, NSNRR, ACCDC, IBA Canada

Date:	May 2023	Project #:	21-8224
Scale:	1:40,000	Drawing #:	7.14
Drawn By:	K. Wallace		
Checked By:	M. Savelle		

strum
CONSULTING





Weavers Mountain Wind Energy Project
Vertebrate ACCDC Data and Significant Species/
Habitat

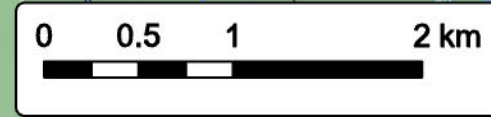


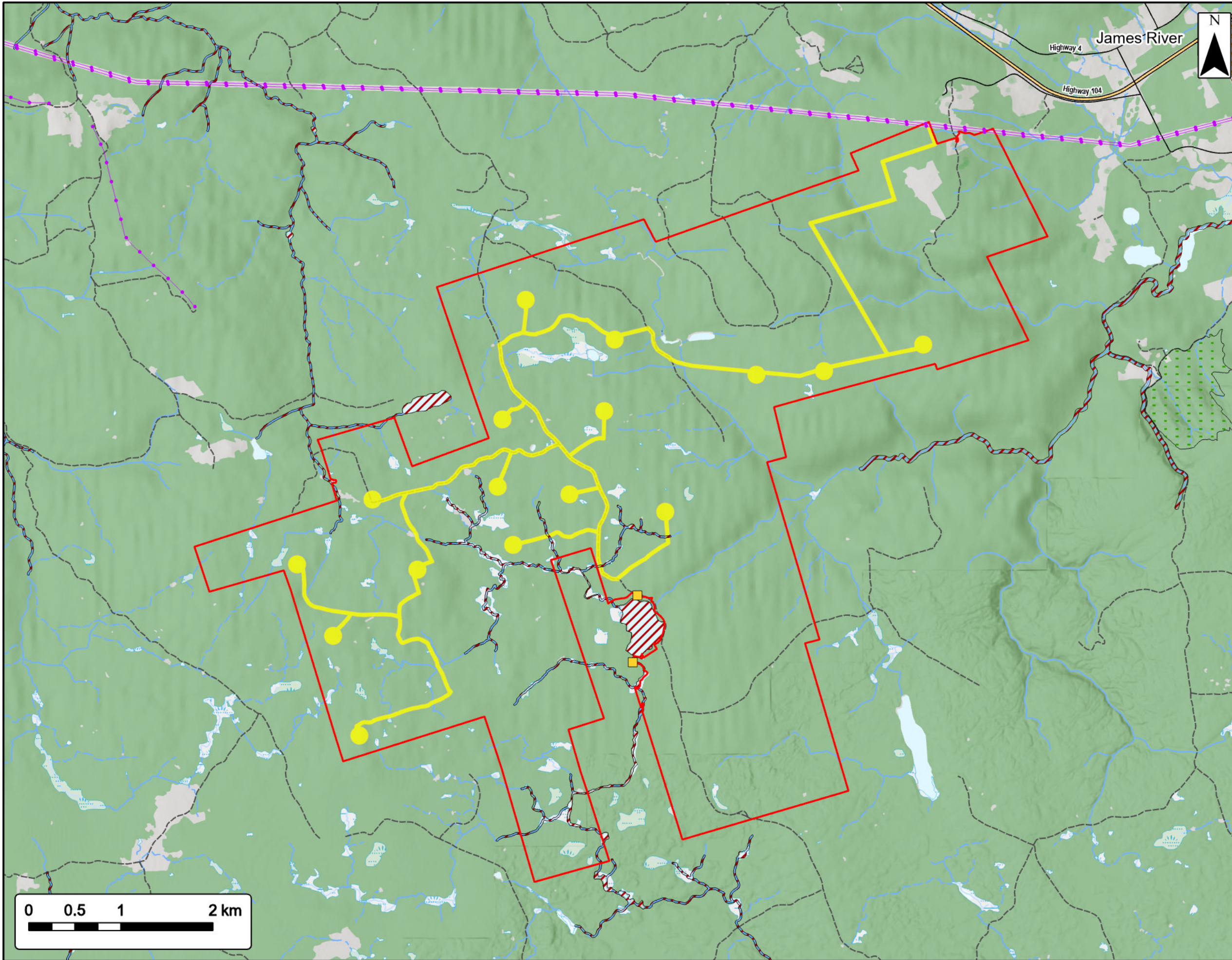
Study Area	
Assessment Area	
ACCDC Pt. Data	
Vertebrate Fauna	
Significant Species & Habitats (NSNRR)	
Deer Wintering	
Other Habitat (Talus Slopes)	
Species at Risk	
Utilities (line)	
Existing Transmission Lines	
Transportation	
Trans-Canada Highway	
Road	
Unpaved Road	
Water Features	
Mapped Stream	
Mapped Indefinite Stream	
Mapped Lakes and Rivers	
Mapped Wet Area	



Coordinate System: NAD83 UTM Zone 20N
Sources: Esri Basemaps, GeoNOVA, SNSIS, NRCan, NSNRR, ACCDC, IBA Canada

Date:	May 2023	Project #:	21-8224
Scale:	1:40,000	Drawing #:	7.15A
Drawn By:	K. Wallace		
Checked By:	M. Savelle		





Weavers Mountain Wind Energy Project
*Invertebrate ACCDC Data and Significant Species/
 Habitat*

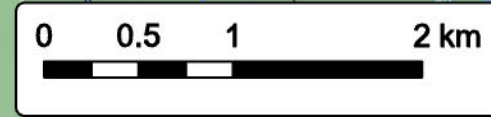


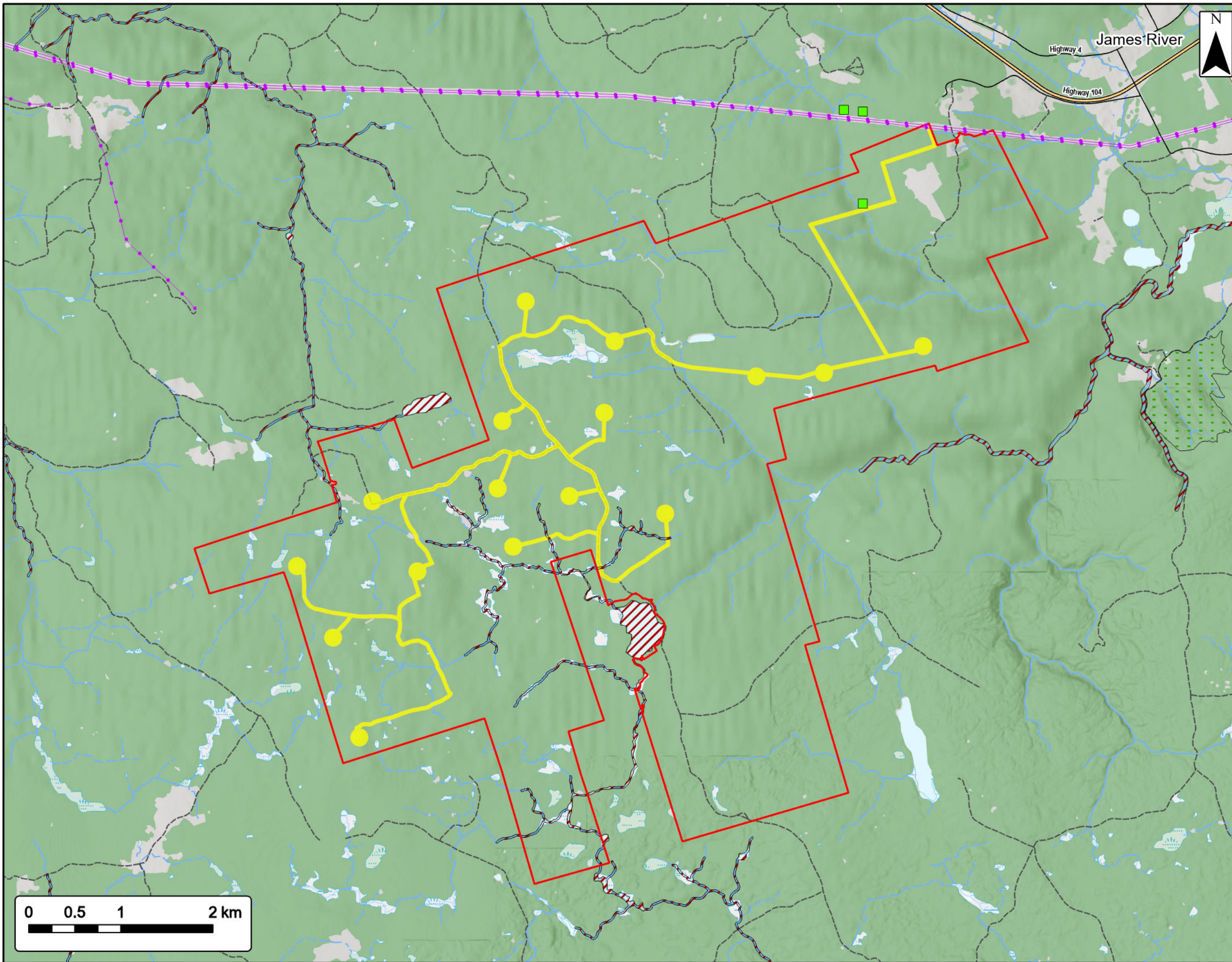
Study Area	
Assessment Area	
ACCDC Pt. Data	
Invertebrate Fauna	
Significant Species & Habitats (NSNRR)	
Deer Wintering	
Other Habitat (Talus Slopes)	
Species at Risk	
Utilities (line)	
Existing Transmission Lines	
Transportation	
Trans-Canada Highway	
Road	
Unpaved Road	
Water Features	
Mapped Stream	
Mapped Indefinite Stream	
Mapped Lakes and Rivers	
Mapped Wet Area	



Coordinate System: NAD83 UTM Zone 20N
 Sources: Esri Basemaps, GeoNOVA, SNSIS, NRCan, NSNRR, ACCDC, IBA Canada

Date:	May 2023	Project #:	21-8224
Scale:	1:40,000	Drawing #:	7.15B
Drawn By:	K. Wallace		
Checked By:	M. Savelle		





Weavers Mountain Wind Energy Project
 Vascular ACCDC Data and Significant Species/
 Habitat

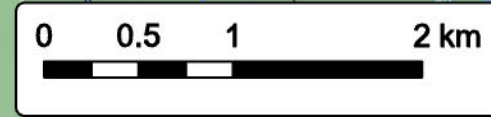


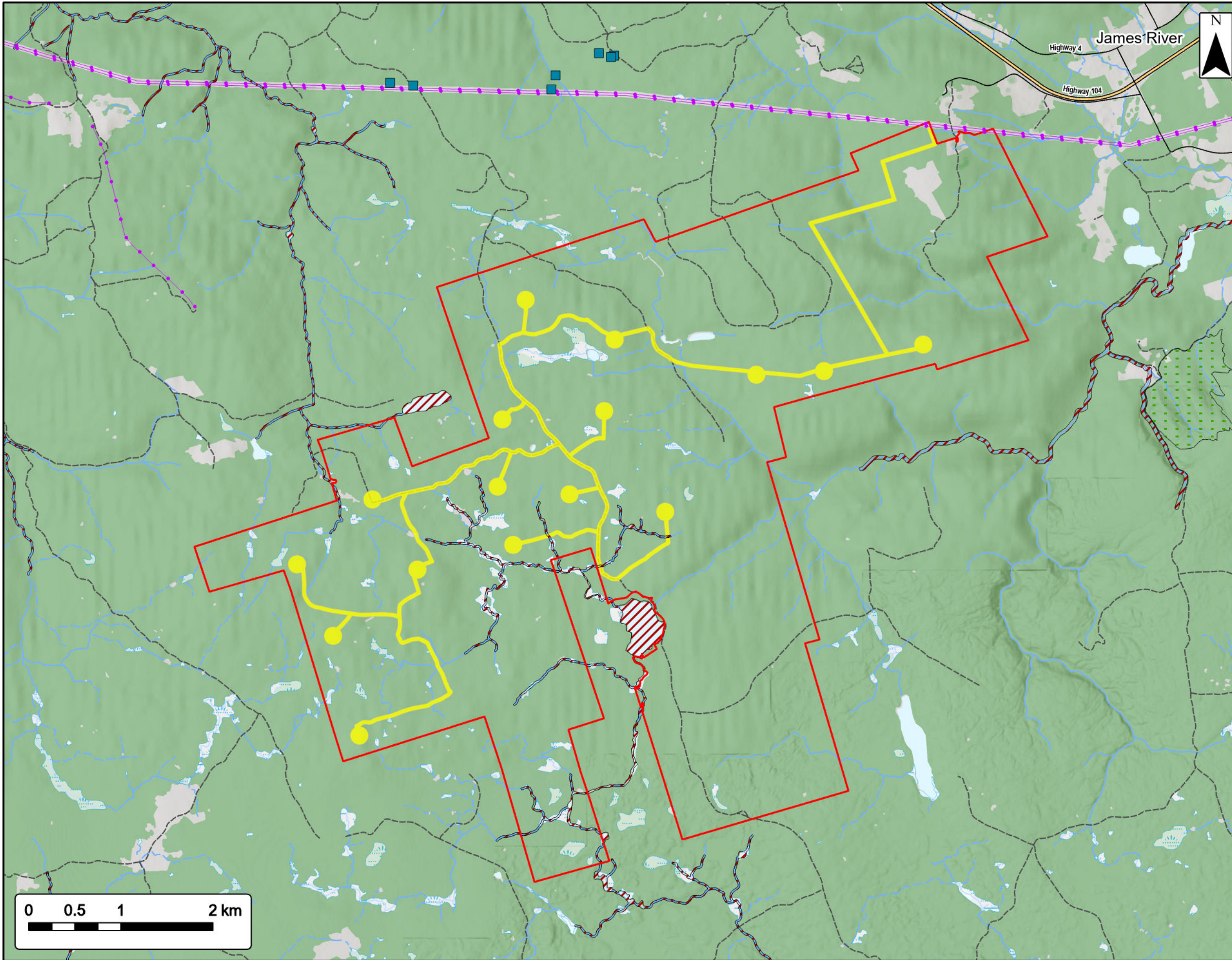
Study Area	
Assessment Area	
ACCDC Pt. Data	
Vascular Flora	
Significant Species & Habitats (NSNRR)	
Deer Wintering	
Other Habitat (Talus Slopes)	
Species at Risk	
Utilities (line)	
Existing Transmission Lines	
Transportation	
Trans-Canada Highway	
Road	
Unpaved Road	
Water Features	
Mapped Stream	
Mapped Indefinite Stream	
Mapped Lakes and Rivers	
Mapped Wet Area	



Coordinate System: NAD83 UTM Zone 20N
 Sources: Esri Basemaps, GeoNOVA, SNSIS, NRCan, NSNRR, ACCDC, IBA Canada

Date:	May 2023	Project #:	21-8224
Scale:	1:40,000	Drawing #:	7.15C
Drawn By:	K. Wallace		
Checked By:	M. Savelle		





Weavers Mountain Wind Energy Project
*Nonvascular ACCDC Data and Significant Species/
 Habitat*

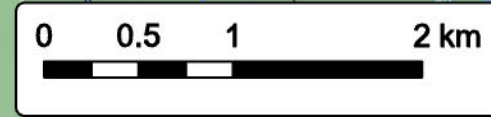


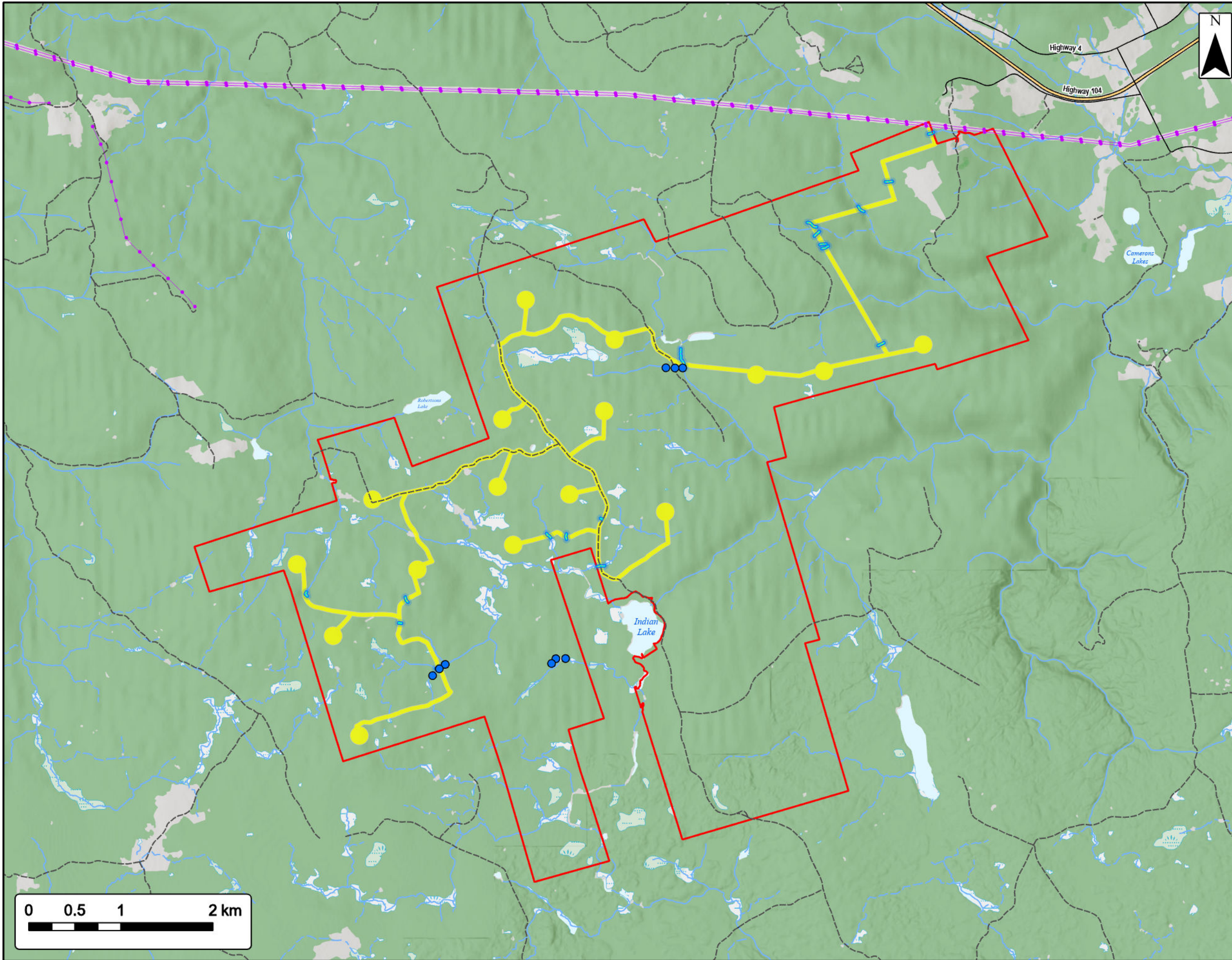
Study Area	
Assessment Area	
ACCDC Pt. Data	
Nonvascular Flora	
Significant Species & Habitats (NSNRR)	
Deer Wintering	
Other Habitat (Talus Slopes)	
Species at Risk	
Utilities (line)	
Existing Transmission Lines	
Transportation	
Trans-Canada Highway	
Road	
Unpaved Road	
Water Features	
Mapped Stream	
Mapped Indefinite Stream	
Mapped Lakes and Rivers	
Mapped Wet Area	



Coordinate System: NAD83 UTM Zone 20N
 Sources: Esri Basemaps, GeoNOVA, SNSIS, NRCan, NSNRR, ACCDC, IBA Canada

Date:	May 2023	Project #:	21-8224
Scale:	1:40,000	Drawing #:	7.15D
Drawn By:	K. Wallace		
Checked By:	M. Savelle		





Weavers Mountain Wind Energy Project
Fish Habitat

SWEB Development
a W.E.B company
swab.energy



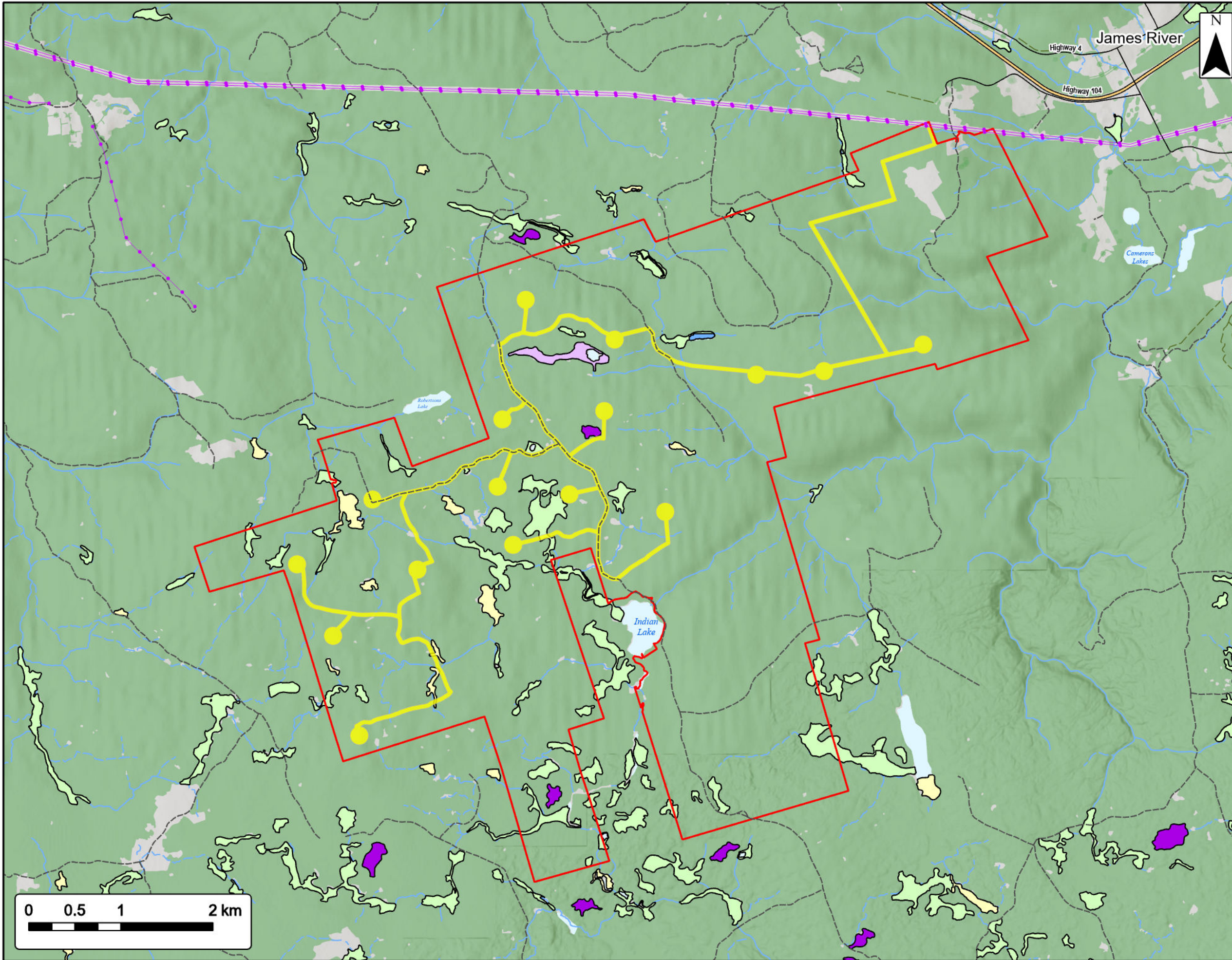
Study Area	
Assessment Area	
Electrofished Pt. Locations	
Watercourse	
Transportation	
Trans-Canada Highway	
Road	
Unpaved Road	
Utilities (line)	
Existing Transmission Lines	
Water Features	
Mapped Stream	
Mapped Indefinite Stream	
Mapped Wet Area	



Coordinate System: NAD83 UTM Zone 20N
Sources: Esri Basemaps, GeoNOVA, SNSIS, NRCan, NSNRR, ACCOC, IBA Canada

Date:	May 2023	Project #:	21-8224
Scale:	1:40,000	Drawing #:	7.16
Drawn By:	K. Wallace		
Checked By:	M. Savelle		





Weavers Mountain Wind Energy Project
NSNRR Wetlands Data

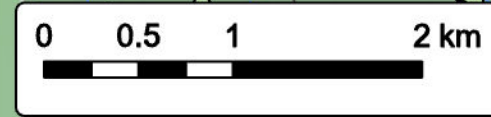


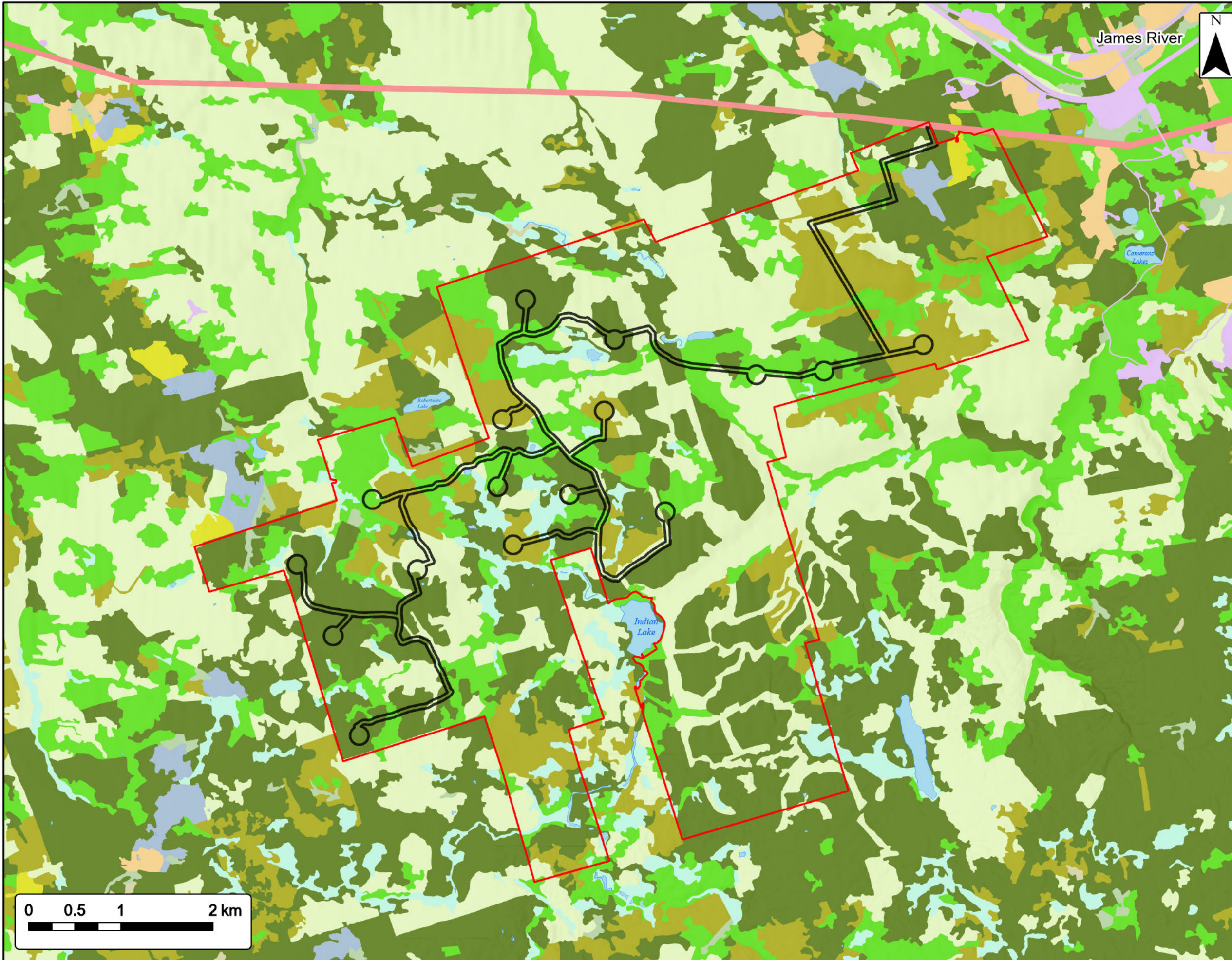
Study Area	
Assessment Area	
NSNRR Wetland Inventory	
Bog or Fen	
Fen	
Marsh	
Swamp	
Water	
Transportation	
Trans-Canada Highway	
Road	
Unpaved Road	
Utilities (line)	
Existing Transmission Lines	
Water Features	
Mapped Stream	
Mapped Indefinite Stream	
Mapped Lakes and Rivers	



Coordinate System: NAD83 UTM Zone 20N
Sources: Esri Basemaps, GeoNOVA, SNSIS, NRCan, NSNRR, ACCDC, IBA Canada

Date:	May 2023	Project #:	21-8224
Scale:	1:40,000	Drawing #:	7.17
Drawn By:	K. Wallace		
Checked By:	M. Savelle		





Weavers Mountain Wind Energy Project
Land Cover



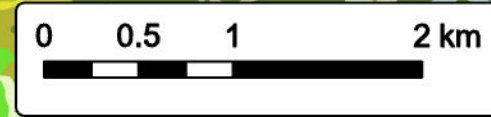
Study Area	
Assessment Area	
Land Cover	
Agriculture	
Blueberries or Barren	
Bogs or Wetlands	
Brush	
Hardwood	
Harvests	
Mixedwood	
Old Field	
Softwood	
Urban, Landfill, Quarry, Transport Corridor	
Utility Corridor	
Water	
Windthrow or Dead	

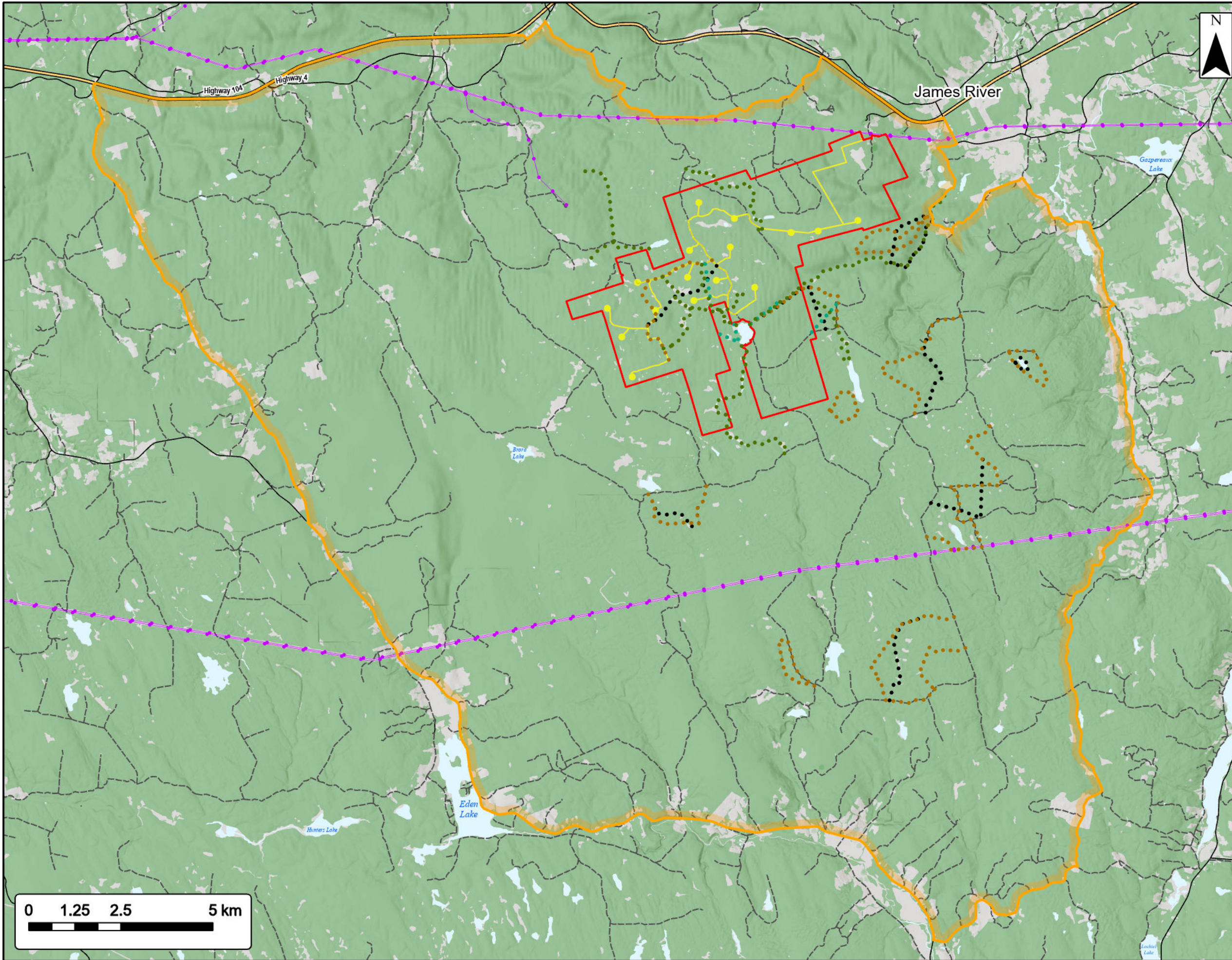


Coordinate System: NAD83 UTM Zone 20N Sources: Eri Basemaps, GeoNOVA, SNSIS, NRCan, NSNRR, ACCDC, IBA Canada

Date:	May 2023
Scale:	1:40,000
Drawn By:	K. Wallace
Checked By:	M. Savelle

Project #:	21-8224
Drawing #:	7.18





Weavers Mountain Wind Farm

Field Transects

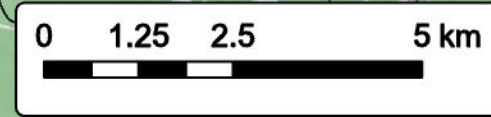


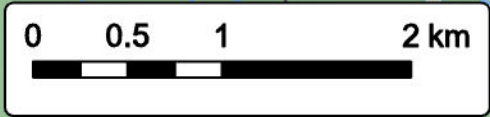
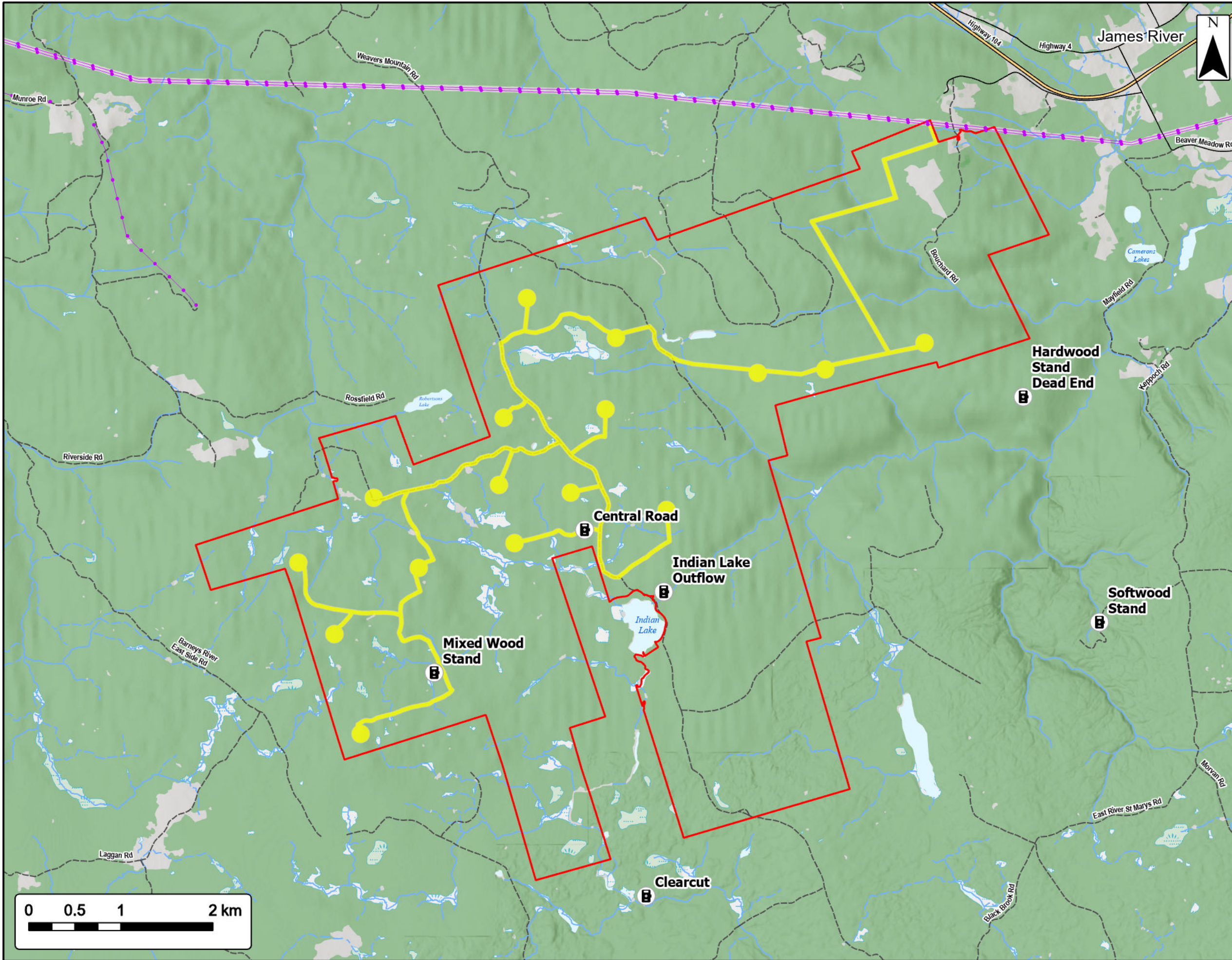
Study Area	
Assessment Area	
Regional Assessment Area	
Weavers Turtle Transects	
Vegetation Transects	
Pellet Survey Transect	
2022 Winter Transects	
Transportation	
Trans-Canada Highway	
Road	
Unpaved Road	
Utilities (line)	
Existing Transmission Lines	
Water Features	
Mapped Lakes and Rivers	



Coordinate System: NAD83 UTM Zone 20N
 Sources: Esri Basemaps, GeoNOVA, SNSIS, NRCan, NSNRR, ACCDC, IBA Canada

Date:	May 2023	Project #:	21-8224
Scale:	1:100,000	Drawing #:	7.19
Drawn By:	K. Wallace		
Checked By:	M. Savelle		





Weavers Mountain Wind Energy Project
Trail Camera Locations

SWEB Development
a W.E.B company
sweb.energy

Study Area

Assessment Area

Trail Cam Names

Transportation

Trans-Canada Highway

Road

Unpaved Road

Utilities (line)

Existing Transmission Lines

Water Features

Mapped Stream

Mapped Indefinite Stream

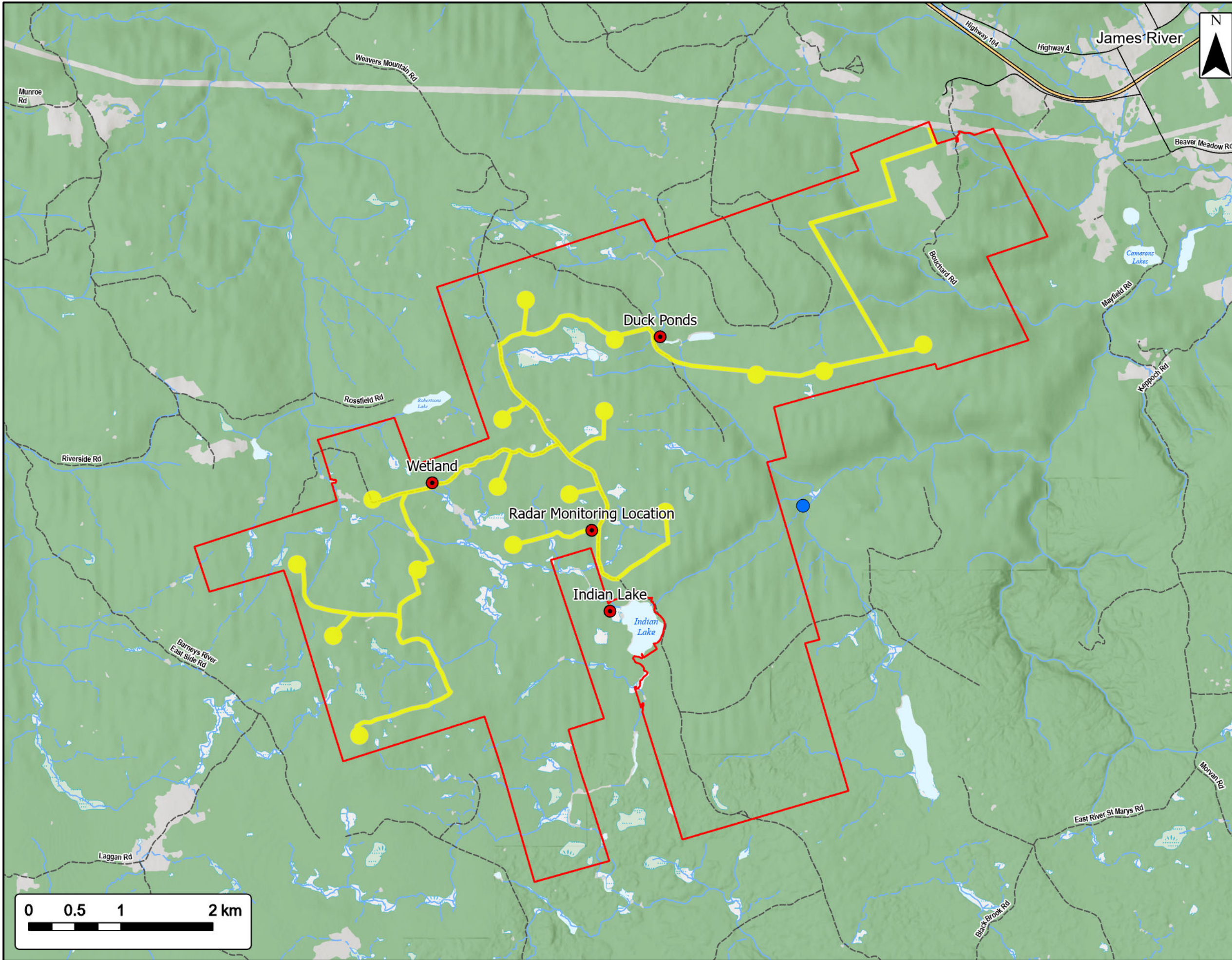
Mapped Lakes and Rivers

Mapped Wet Area

Coordinate System: NAD83 UTM Zone 20N
Sources: Esri Basemaps, GeoNOVA, SNSIS, NRCAN, NSNRR, ACCDC, IBA Canada

Date:	May 2023	Project #:	21-8224
Scale:	1:40,000	Drawing #:	7.20
Drawn By:	K. Wallace		
Checked By:	M. Savelle		

strum
CONSULTING



Weavers Mountain Wind Energy Project Bat Assessment

SWEB Development
a W.E.B company
sweb.energy

Study Area

Assessment Area

Bat Monitoring Location

Abandoned Mine Openings

Transportation

Trans-Canada Highway

Road

Unpaved Road

Water Features

Mapped Stream

Mapped Indefinite Stream

Mapped Lakes and Rivers

Mapped Wet Area

0 50 100 200 km

Coordinate System: NAD83 UTM Zone 20N		Sources: Esri Basemaps, GeoNOVA, SNSIS, NRCan, NSNRR, ACCDC, IBA Canada	
Date:	May 2023	Project #:	21-8224
Scale:	1:40,000	Drawing #:	7.21
Drawn By:	K. Wallace		
Checked By:	M. Savelle		