

Weavers Mountain Wind Energy Project
Potential Olive-Sided Flycatcher Habitat

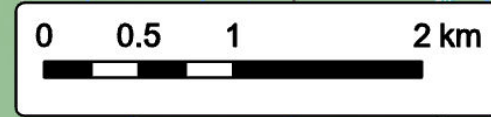


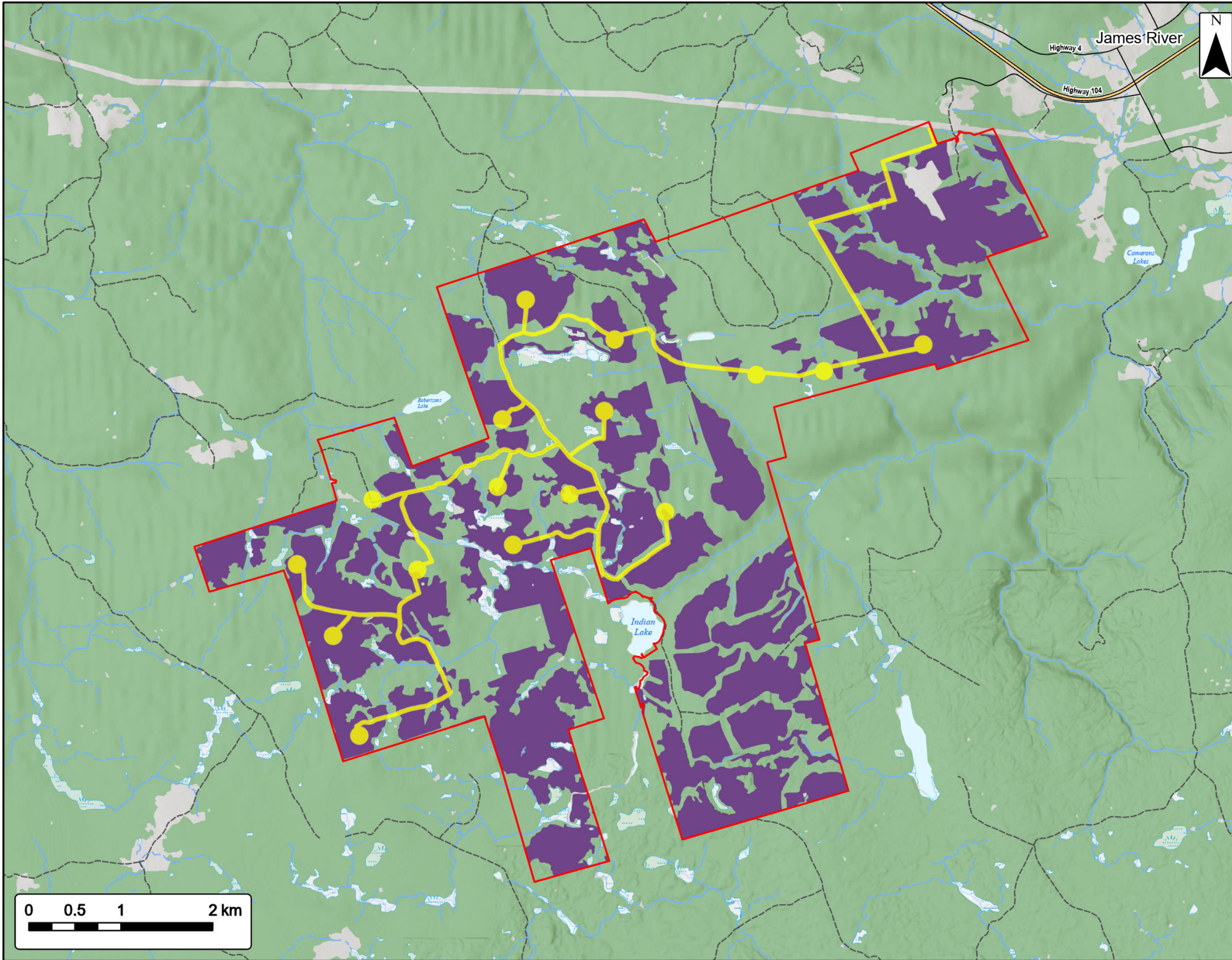
Study Area	
Assessment Area	
Olive-Sided Flycatcher	
Transportation	
Trans-Canada Highway	
Road	
Unpaved Road	
Water Features	
Mapped Stream	
Mapped Indefinite Stream	
Mapped Lakes and Rivers	
Mapped Wet Area	



Coordinate System: NAD83 UTM Zone 20N Sources: Esri Basemaps, GeoNOVA, SNSIS, NRCan, NSNRR, ACCDC, IBA Canada

Date:	May 2023	Project #:	21-8224
Scale:	1:40,000	Drawing #:	7.27F
Drawn By:	K. Wallace		
Checked By:	M. Savelle		





Weavers Mountain Wind Energy Project
Potential Evening Grosbeak Habitat

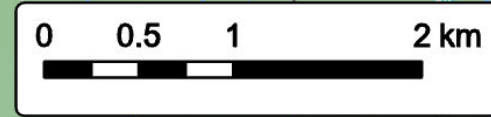


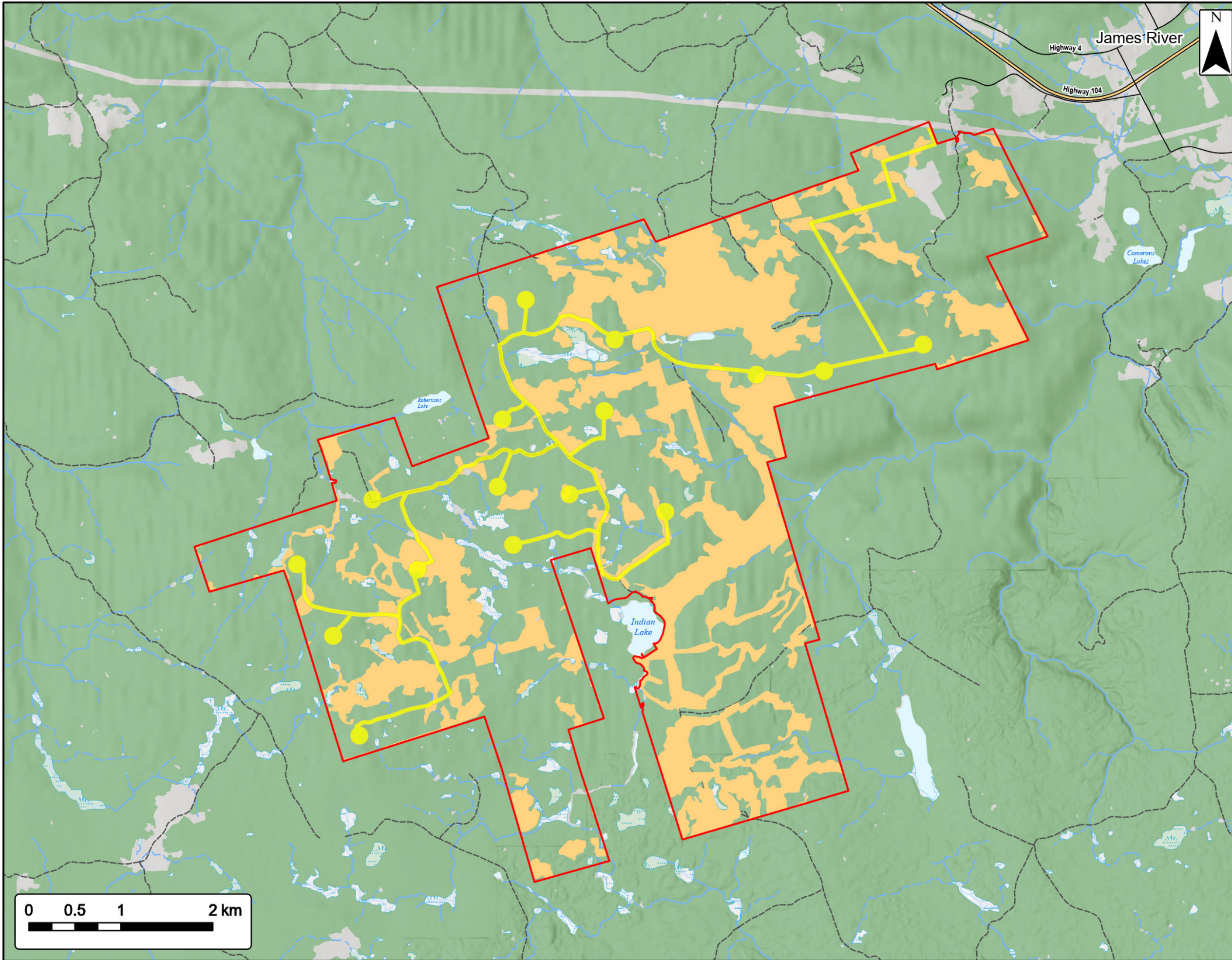
Study Area	
Assessment Area	
Evening Grosbeak	
Transportation	
Trans-Canada Highway	
Road	
Unpaved Road	
Water Features	
Mapped Stream	
Mapped Indefinite Stream	
Mapped Lakes and Rivers	
Mapped Wet Area	



Coordinate System: NAD83 UTM Zone 20N
 Sources: Esri Basemaps, GeoNOVA, SNSIS, NRCan, NSNRR, ACCDC, IBA Canada

Date:	May 2023	Project #:	21-8224
Scale:	1:40,000	Drawing #:	7.27E
Drawn By:	K. Wallace		
Checked By:	M. Savelle		





Weavers Mountain Wind Energy Project
Potential Eastern Wood-Pee-wee Habitat

SWEB Development
 a W.E.B. company
 sweb.energy

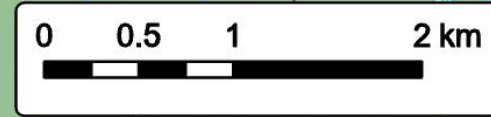


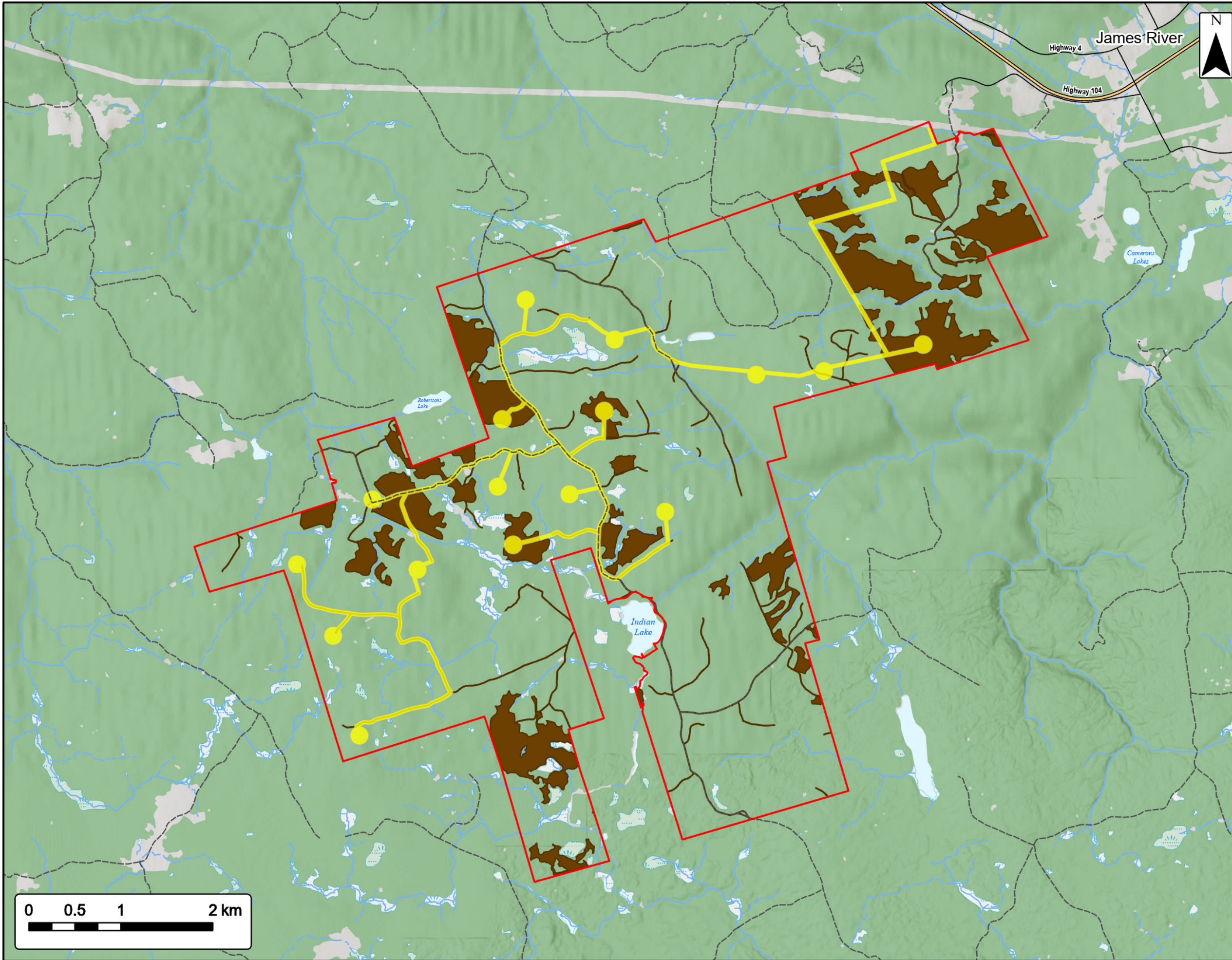
Study Area	
Assessment Area	
Eastern Wood-Pee-wee	
Transportation	
Trans-Canada Highway	
Road	
Unpaved Road	
Water Features	
Mapped Stream	
Mapped Indefinite Stream	
Mapped Lakes and Rivers	
Mapped Wet Area	



Coordinate System: NAD83 UTM Zone 20N
 Sources: Esri Basemaps, GeoNOVA, SNSIS, NRCan, NSNRR, ACCDC, IBA Canada

Date:	May 2023	Project #:	21-8224
Scale:	1:40,000	Drawing #:	7.27D
Drawn By:	P. Opra		
Checked By:	M. Savelle		





Weavers Mountain Wind Energy Project
Potential Common Nighthawk Habitat

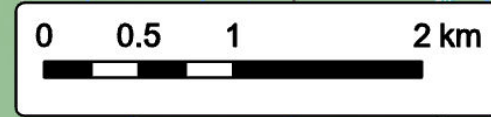


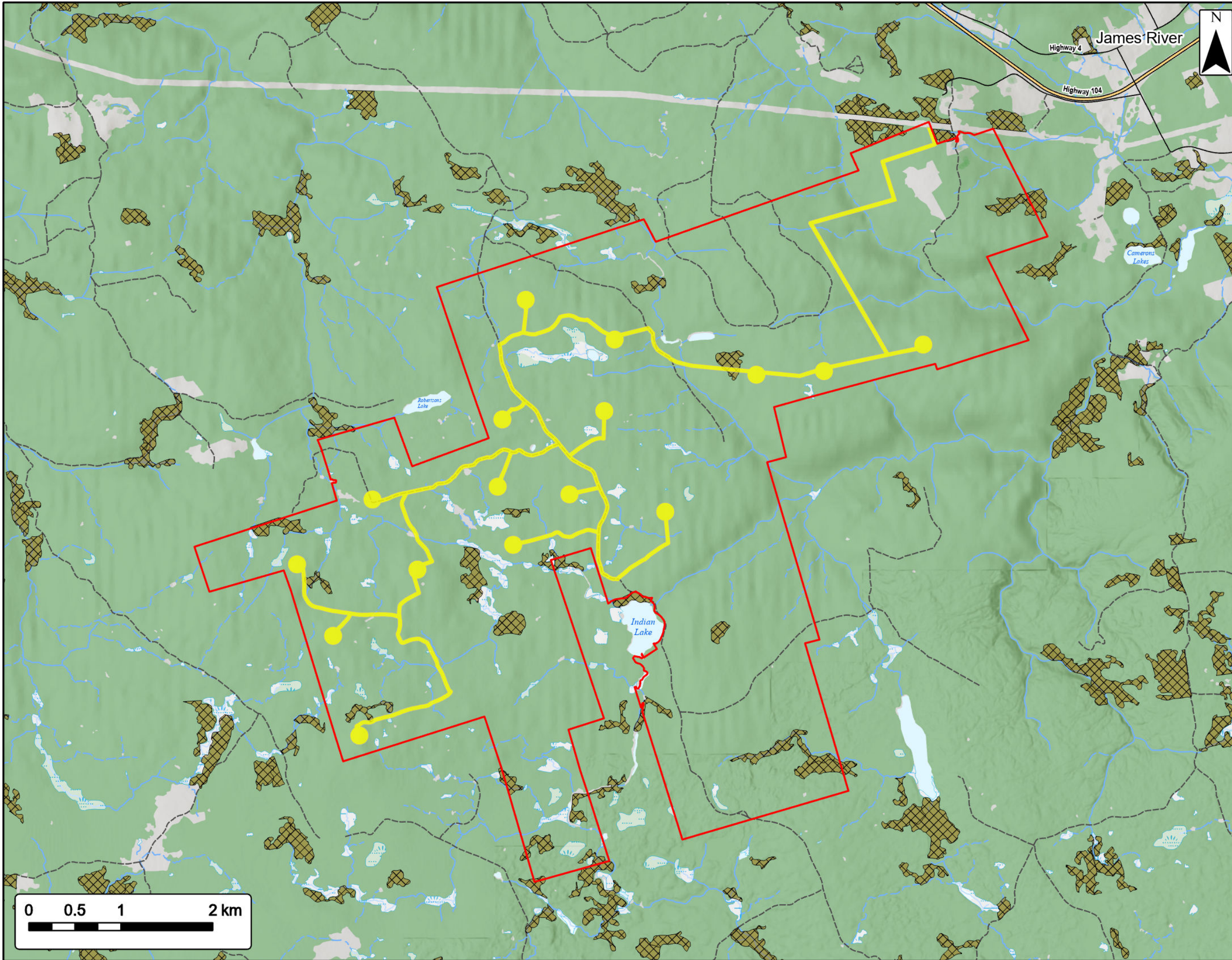
Study Area	
Assessment Area	
Common Nighthawk	
Transportation	
Trans-Canada Highway	
Road	
Unpaved Road	
Water Features	
Mapped Stream	
Mapped Indefinite Stream	
Mapped Lakes and Rivers	
Mapped Wet Area	



Coordinate System: NAD83 UTM Zone 20N
 Sources: Esri Basemaps, GeoNOVA, SNSIS, NRCan, NSNRR, ACCDC, IBA Canada

Date:	May 2023	Project #:	21-8224
Scale:	1:40,000	Drawing #:	7.27C
Drawn By:	K. Wallace		
Checked By:	M. Savelle		





Weavers Mountain Wind Energy Project
Potential Chimney Swift Habitat

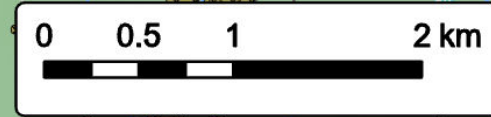


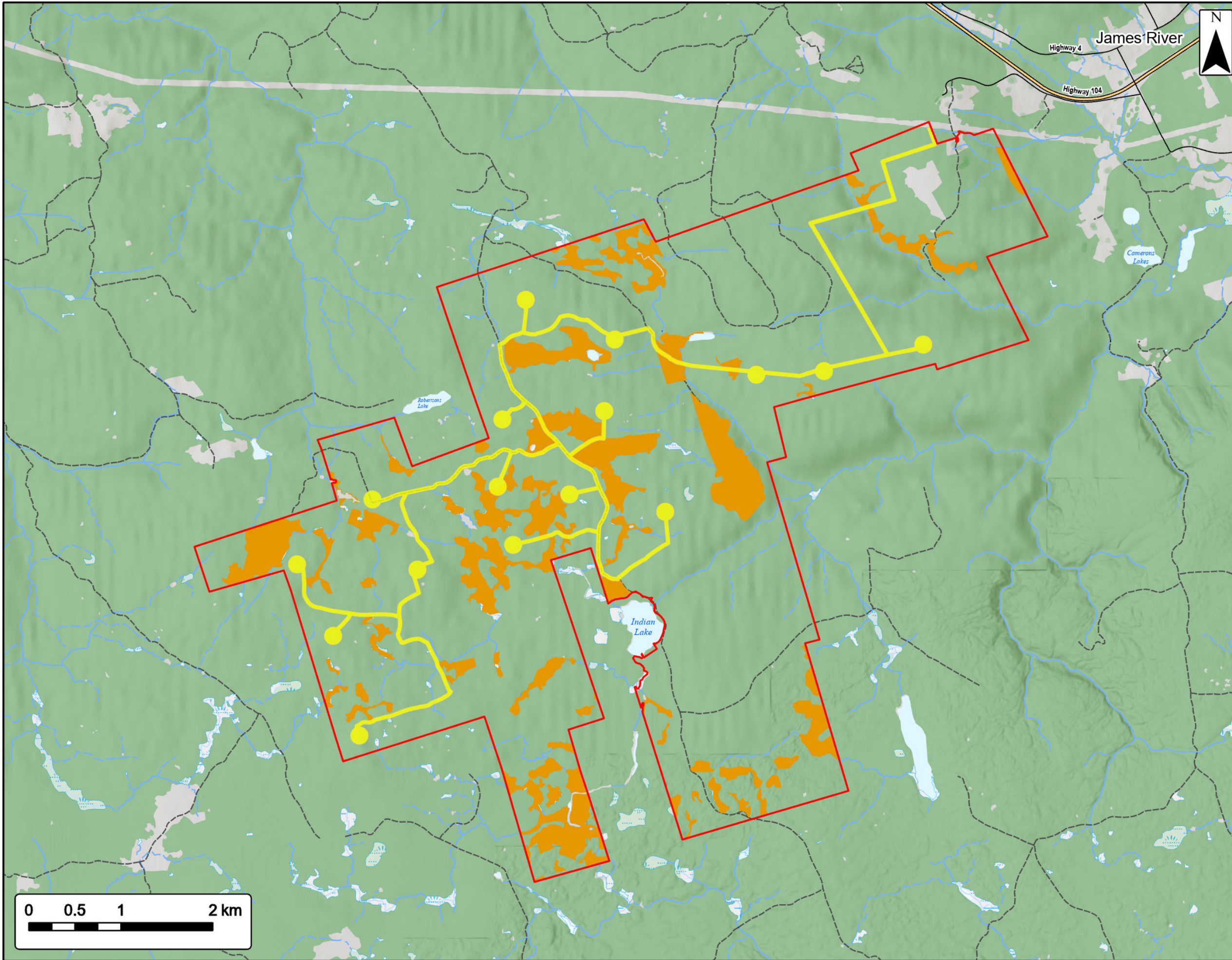
Study Area	
Assessment Area	
Stand Containing Dead Trees	
Transportation	
Trans-Canada Highway	
Road	
Unpaved Road	
Water Features	
Mapped Stream	
Mapped Indefinite Stream	
Mapped Lakes and Rivers	
Mapped Wet Area	



Coordinate System: NAD83 UTM Zone 20N
 Sources: Esri Basemaps, GeoNOVA, SNSIS, NRCan, NSNRR, ACCDC, IBA Canada

Date:	May 2023	Project #:	21-8224
Scale:	1:40,000	Drawing #:	7.27B
Drawn By:	P. Opra		
Checked By:	M. Savelle		





Weavers Mountain Wind Energy Project
Potential Canada Warbler Habitat

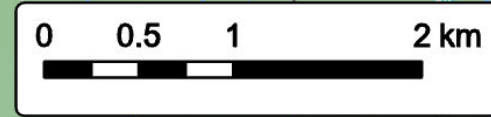


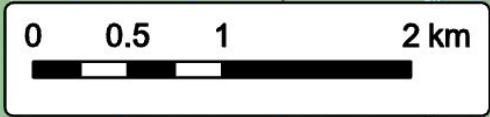
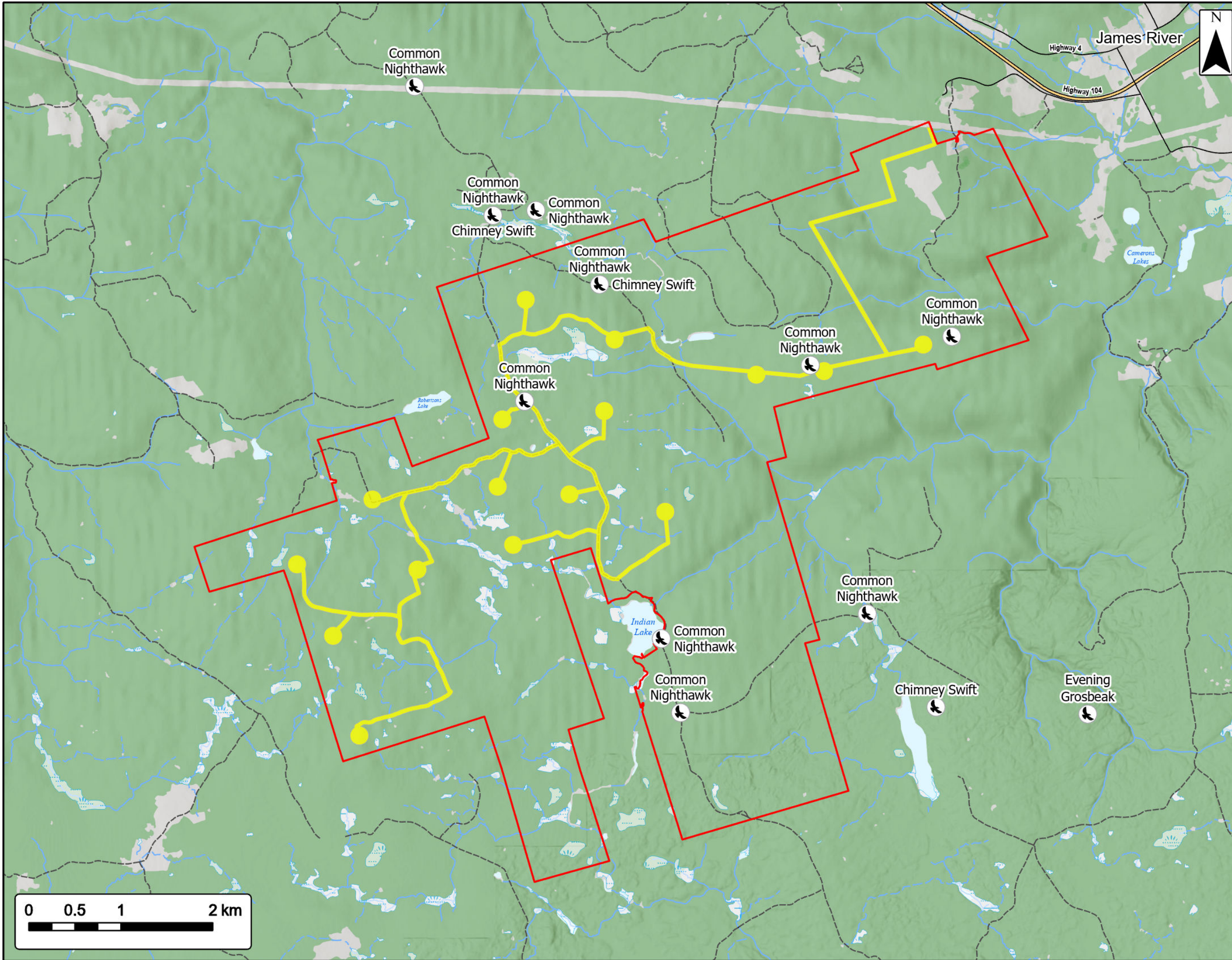
Study Area	
Assessment Area	
Canada Warbler	
Transportation	
Trans-Canada Highway	
Road	
Unpaved Road	
Water Features	
Mapped Stream	
Mapped Indefinite Stream	
Mapped Lakes and Rivers	
Mapped Wet Area	



Coordinate System: NAD83 UTM Zone 20N
 Sources: Esri Basemaps, GeoNOVA, SNSIS, NRCan, NSNRR, ACCDC, IBA Canada

Date:	May 2023	Project #:	21-8224
Scale:	1:40,000	Drawing #:	7.27A
Drawn By:	K. Wallace		
Checked By:	M. Savelle		





Weavers Mountain Wind Energy Project
Diurnal Watch and CONI Bird SAR Observations

SWEB Development
a W.E.B company
sweb.energy

Study Area

Assessment Area

SAR - CONI and Diurnal Watch

Transportation

Trans-Canada Highway

Road

Unpaved Road

Water Features

Mapped Stream

Mapped Indefinite Stream

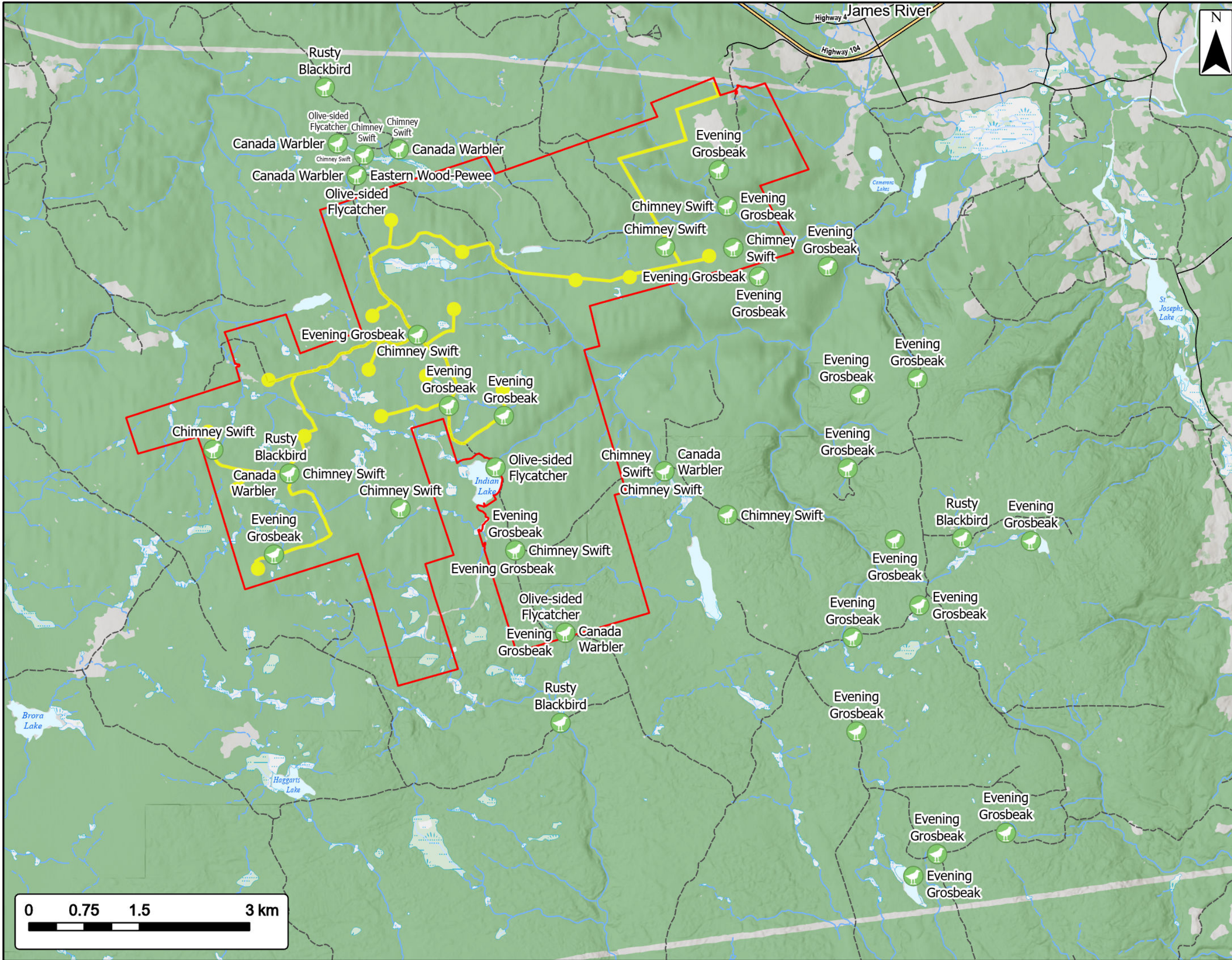
Mapped Lakes and Rivers

Mapped Wet Area

Coordinate System: NAD83 UTM Zone 20N

Sources: Esri Basemaps, GeoNOVA, SNSIS, NRCan, NSNRR, ACCDC, IBA Canada

Date: May 2023	Project #: 21-8224
Scale: 1:40,000	Drawing #:
Drawn By: P. Opra	7.26
Checked By: M. Savelle	



Weavers Mountain Wind Energy Project
Point Count Bird SAR Observations

SWEB Development
a W.E.B company
sweb.energy



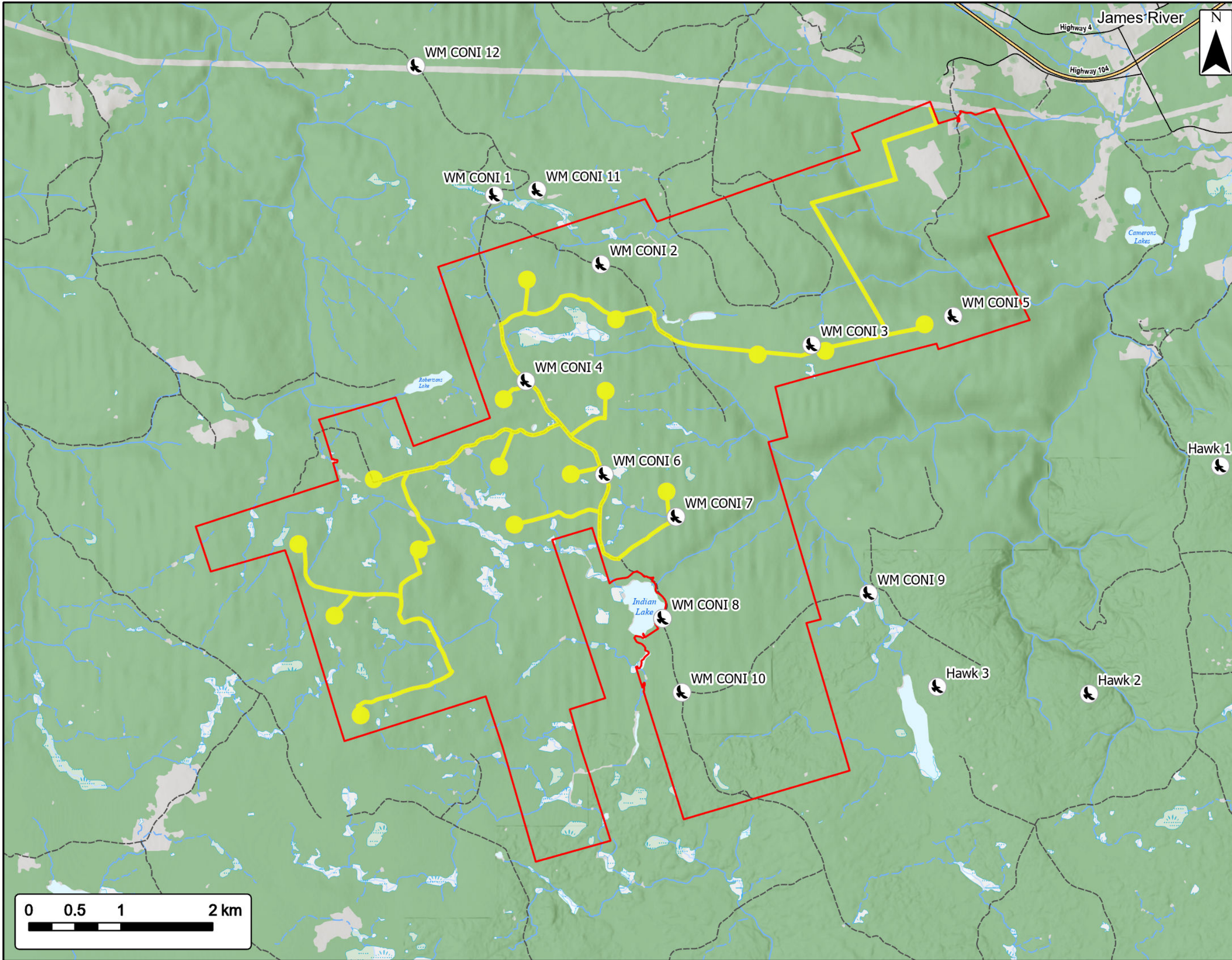
Study Area	
Assessment Area	
SAR - Point Count Locations	
Transportation	
Trans-Canada Highway	
Road	
Unpaved Road	
Water Features	
Mapped Stream	
Mapped Indefinite Stream	
Mapped Lakes and Rivers	
Mapped Wet Area	



Coordinate System: NAD83 UTM Zone 20N Sources: Esri Basemaps, GeoNOVA, SNSIS, NRCan, NSNRR, ACCDC, IBA Canada

Date:	May 2023	Project #:	21-8224
Scale:	1:50,000	Drawing #:	7.25
Drawn By:	P. Opra		
Checked By:	M. Savelle		





Weavers Mountain Wind Energy Project CONI and Diurnal Watch Locations

SWEB Development
a W.E.B company
sweb.energy

Study Area [Red outline]

Assessment Area [Yellow outline]

CONI and Diurnal Watch [Bird icon]

Transportation

Trans-Canada Highway [Thick double line]

Road [Thin solid line]

Unpaved Road [Dashed line]

Water Features

Mapped Stream [Blue line]

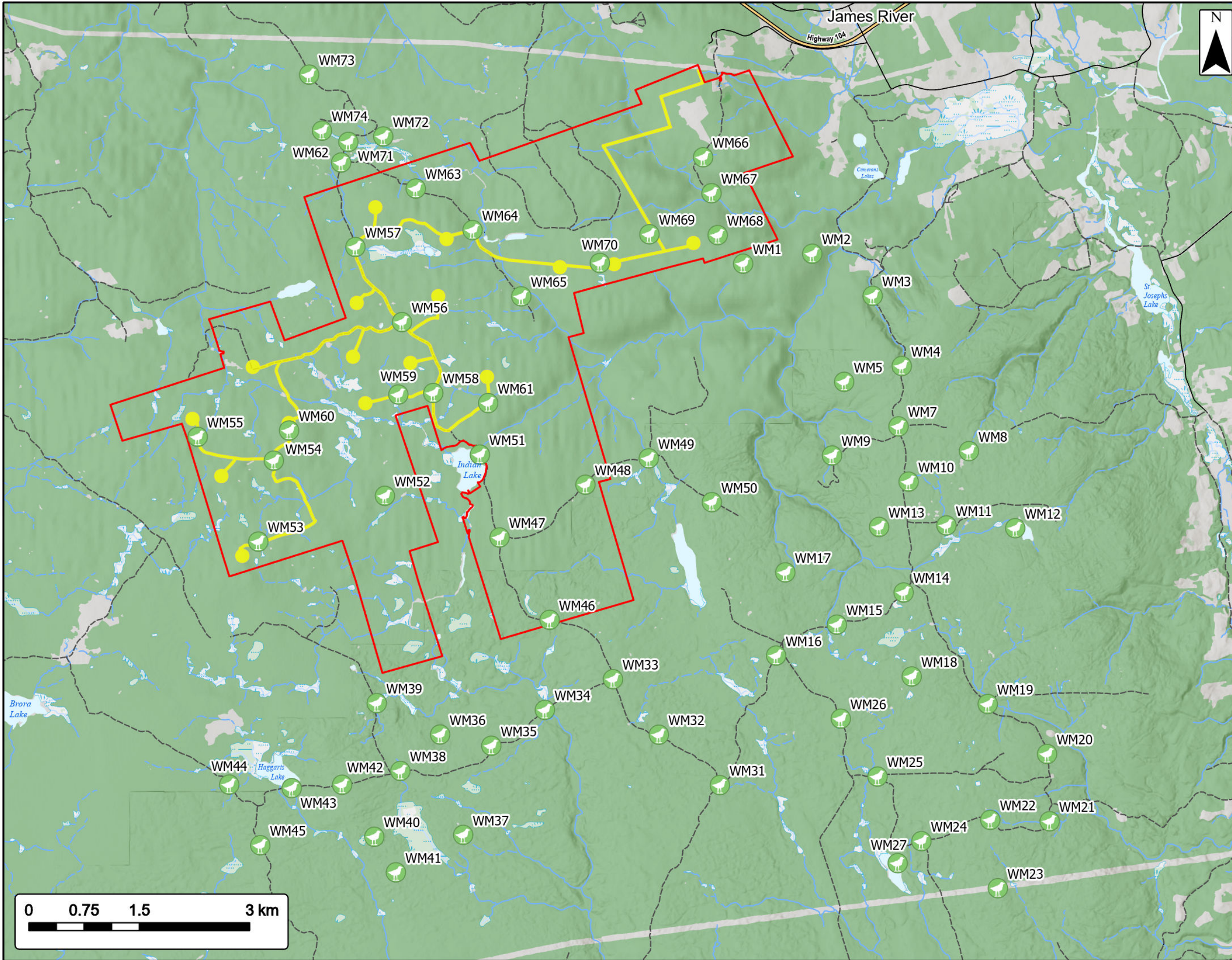
Mapped Indefinite Stream [Blue dashed line]

Mapped Lakes and Rivers [Blue area]

Mapped Wet Area [Blue wavy area]

Coordinate System: NAD83 UTM Zone 20N Sources: Esri Basemaps, GeoNOVA, SNSIS, NRCan, NSNRR, ACCDC, IBA Canada

Date: May 2023	Project #: 21-8224
Scale: 1:40,000	Drawing #: 7.24
Drawn By: P. Opra	
Checked By: M. Savelle	



Weavers Mountain Wind Energy Project Point Count Locations

SWEB Development
a W.E.B. company
sweb.energy

Study Area ▬

Assessment Area ▬

Point Count Location

Transportation

Trans-Canada Highway

Road

Unpaved Road

Water Features

Mapped Stream

Mapped Indefinite Stream

Water Features

Mapped Lakes and Rivers

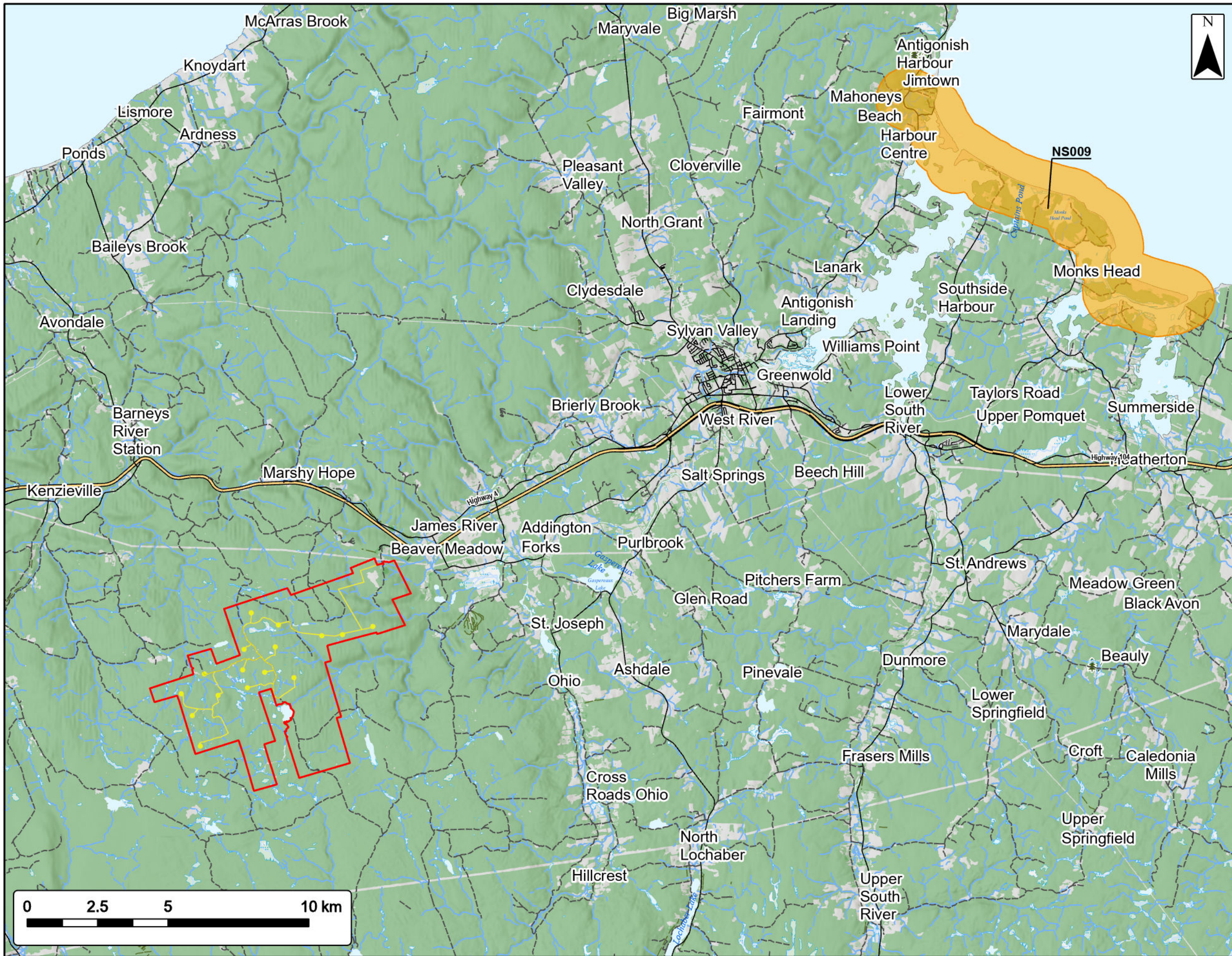
Mapped Lakes and Rivers

Mapped Wet Area

0 50 100 200 km

Coordinate System: NAD83 UTM Zone 20N Sources: Eri Basemaps, GeoNOVA, SNSIS, NRCan, NSNRR, ACCDC, IBA Canada

Date:	May 2023	Project #:	21-8224
Scale:	1:50,000	Drawing #:	7.23
Drawn By:	P. Opra		
Checked By:	M. Savelle		



Weavers Mountain Wind Energy Project

Overview of Nearest IBA Polygon

SWEB Development
a W.E.B. company
swb.energy



Study Area	
Assessment Area	
IBA - NS009	
Transportation	
Trans-Canada Highway	
Road	
Unpaved Road	
Water Features	
Mapped Stream	
Mapped Indefinite Stream	
Mapped Lakes and Rivers	
Mapped Wet Area	



Coordinate System: NAD83 UTM Zone 20N Sources: Esri Basemaps, GeoNOVA, SNSIS, NRCan, NSNRR, ACCOC, IBA Canada

Date:	May 2023	Project #:	21-8224
Scale:	1:130,000	Drawing #:	7.22
Drawn By:	K. Wallace		
Checked By:	M. Savelle		

