

Weavers Mountain Wind Energy Project

Radar Location and Swept Area

SWEB Development
a W.E.B company
swEB.energy

Study Area

Assessment Area

Radar Location

4 km Radar Sweep Area

Transportation

Trans-Canada Highway

Road

Unpaved Road

Water Features

Mapped Stream

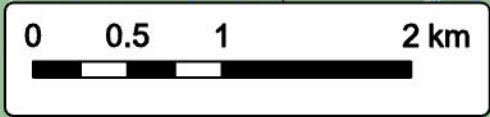
Mapped Indefinite Stream

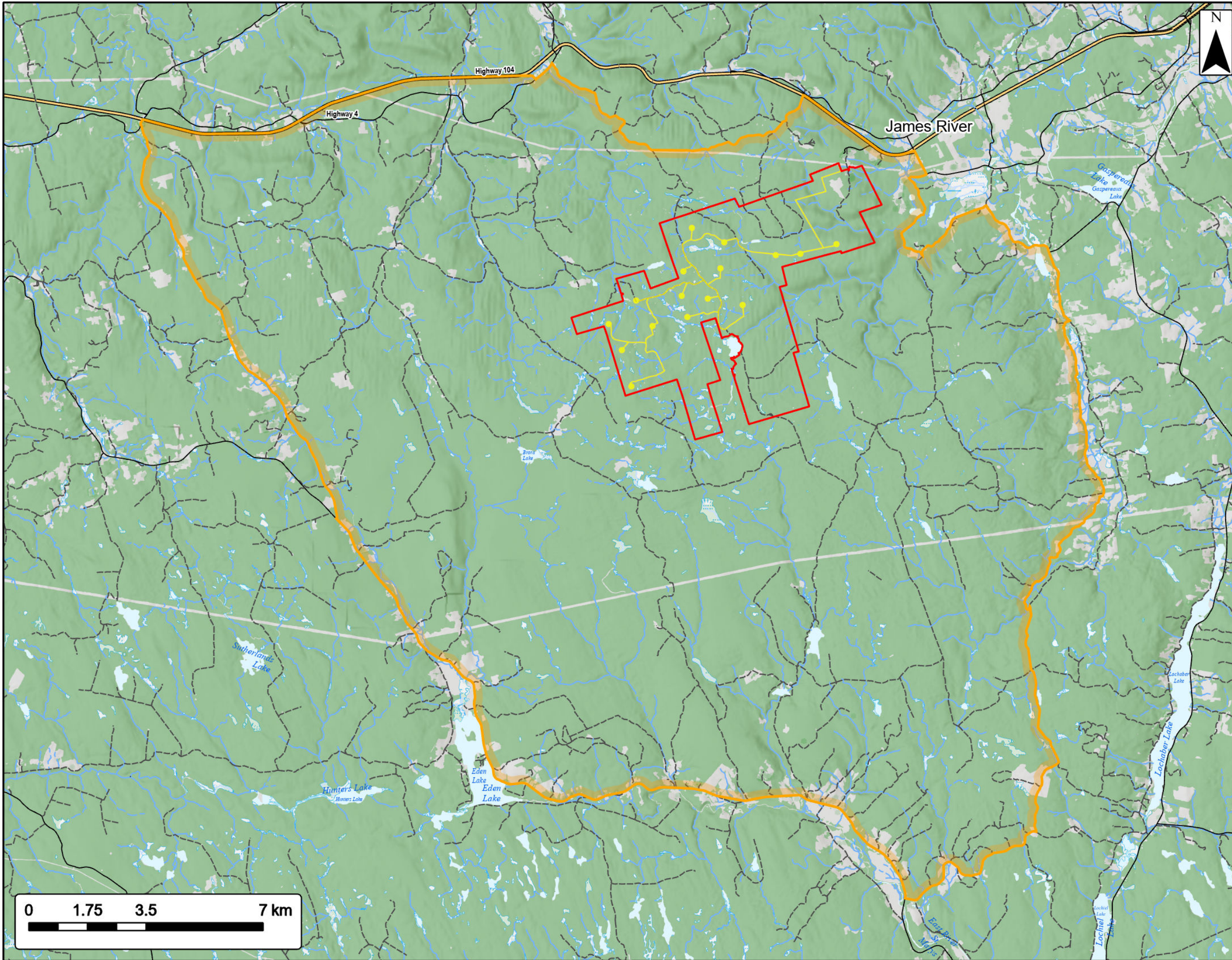
Mapped Wet Area

Coordinate System: NAD83 UTM Zone 20N
Sources: Esri Basemaps, GeoNOVA, SNSIS, NRCan, NSNRR, ACCDC, IBA Canada

Date:	May 2023	Project #:	21-8224
Scale:	1:40,000	Drawing #:	7.28
Drawn By:	K. Wallace		
Checked By:	M. Savelle		

strum
CONSULTING





Weavers Mountain Wind Energy Project
Birds LAA and RAA

SWEB Development
a W.E.B company
sweb.energy

W.E.B

Study Area 

Local Assessment Area 

Regional Assessment Area 

Transportation

Trans-Canada Highway 

Road 

Unpaved Road 

Water Features

Mapped Stream 

Mapped Indefinite Stream 

Water Features

Mapped Lakes and Rivers 

Mapped Lakes and Rivers 

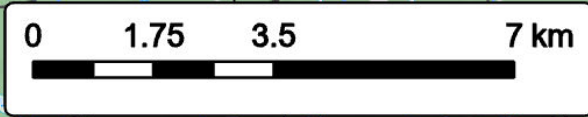
Mapped Wet Area 

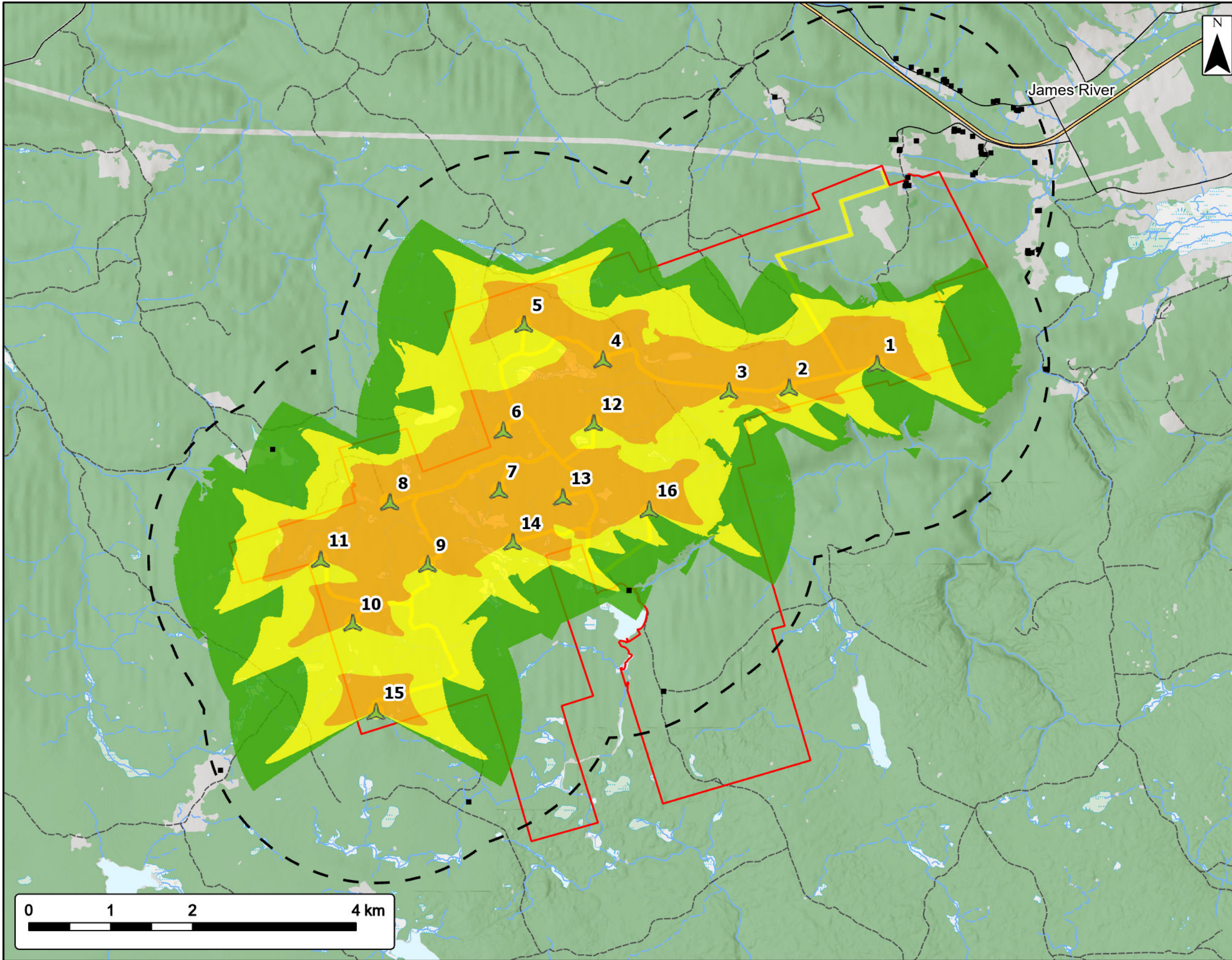


Coordinate System: NAD83 UTM Zone 20N
Sources: Esri Basemaps, GeoNOVA, SNSIS, NRCan, NSNRR, ACCDC, IBA Canada

Date:	May 2023	Project #:	21-8224
Scale:	1:110,000	Drawing #:	7.29
Drawn By:	P.Opra		
Checked By:	M. Savelle		

strum
CONSULTING



Weavers Mountain Wind Energy Project
Shadow Flicker - Worst Case Scenario



Study Area [Red outline symbol]

Assessment Area [Yellow outline symbol]

Proposed Turbine Location [Green turbine symbol]

2km Assessment Area Buffer [Dashed black line symbol]

Non Participating Buildings within 2km of Assessment Area [Black square symbol]

Predicted Shadow Hours/Year (Worst Case)

- 0-30 [Green color swatch]
- 30-100 [Yellow color swatch]
- 100+ [Orange color swatch]

Transportation

- Trans-Canada Highway [Thick brown line symbol]
- Road [Thin black line symbol]
- Unpaved Road [Dashed black line symbol]

Water Features

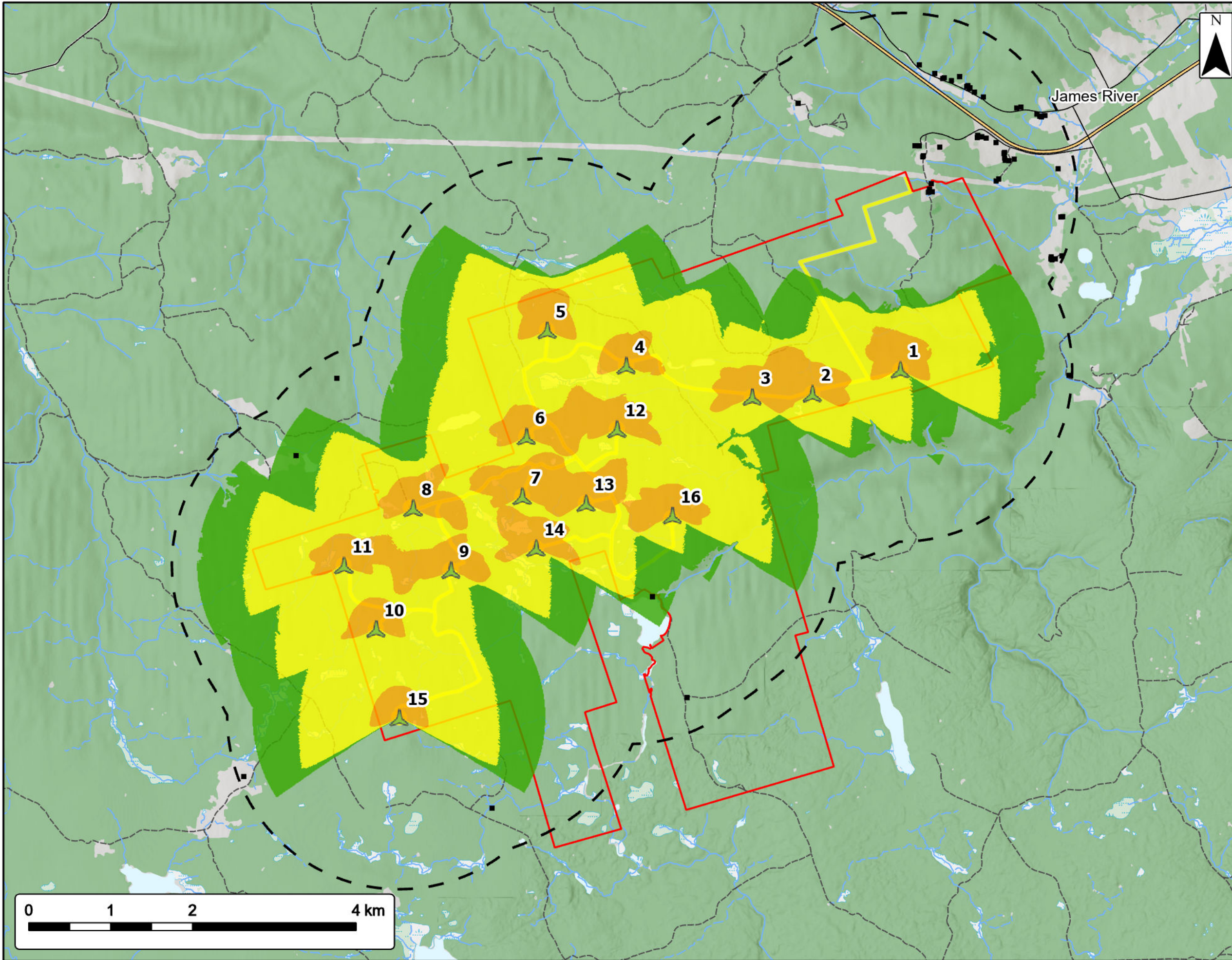
- Mapped Stream [Blue line symbol]
- Mapped Indefinite Stream [Dashed blue line symbol]
- Mapped Lakes and Rivers [Blue area symbol]
- Mapped Wet Area [Light blue area symbol]



Coordinate System: NAD83 UTM Zone 20N
Sources: Esri Basemaps, GeoNOVA, SNSIS, NRCan, NSNRR, ACCDC, IBA Canada

Date:	May 2023	Project #:	21-8224
Scale:	1:45,000	Drawing #:	10.1A
Drawn By:	K. Wallace		
Checked By:	M. Savelle		





Weavers Mountain Wind Energy Project
Shadow Flicker - Worst Case Scenario



Study Area [Red outline symbol]

Assessment Area [Yellow outline symbol]

Proposed Turbine Location [Green turbine symbol]

2km Assessment Area Buffer [Dashed black line symbol]

Non Participating Buildings within 2 km of Assessment Area [Black square symbol]

Predicted Shadow Minutes/Day (Worst Case)

- 0-30 [Light green box]
- 30-100 [Yellow box]
- 100+ [Orange box]

Transportation

- Trans-Canada Highway [Thick brown line symbol]
- Road [Thin black line symbol]
- Unpaved Road [Dashed black line symbol]

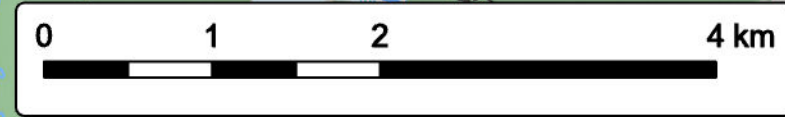
Water Features

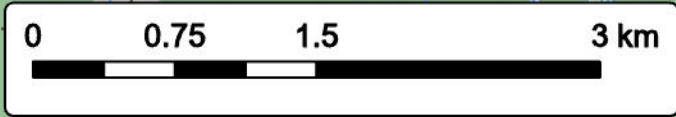
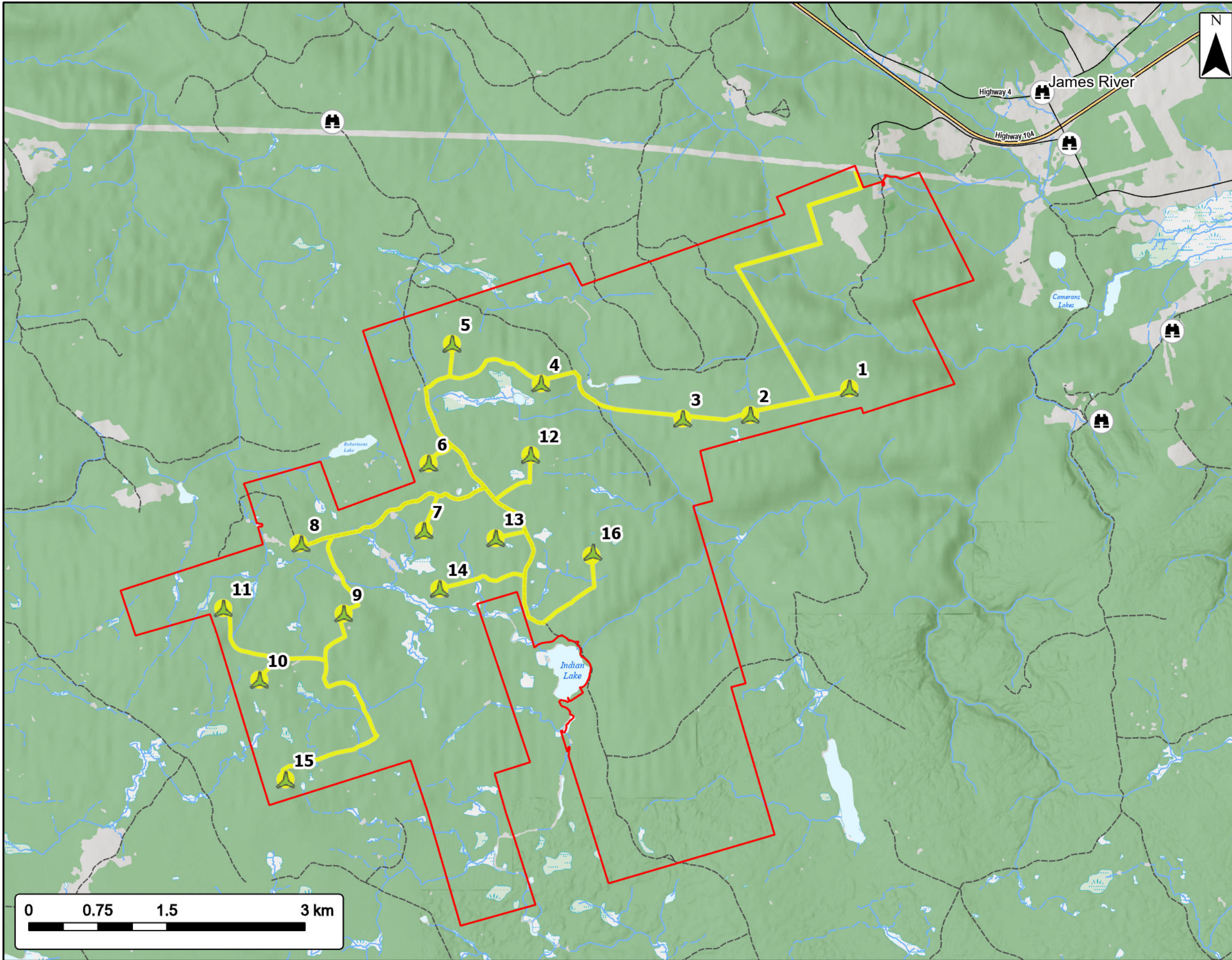
- Mapped Stream [Blue line symbol]
- Mapped Indefinite Stream [Dashed blue line symbol]
- Mapped Lakes and Rivers [Blue area symbol]
- Mapped Wet Area [Light blue area symbol]



Coordinate System: NAD83 UTM Zone 20N Sources: Esri Basemaps, GeoNOVA, SNSIS, NRCan, NSNRR, ACCDC, IBA Canada

Date: May 2023	Project #: 21-8224
Scale: 1:45,000	Drawing #: 10.1B
Drawn By: K. Wallace	
Checked By: M. Savelle	





Weavers Mountain Wind Energy Project
Visual Simulations Photo Locations



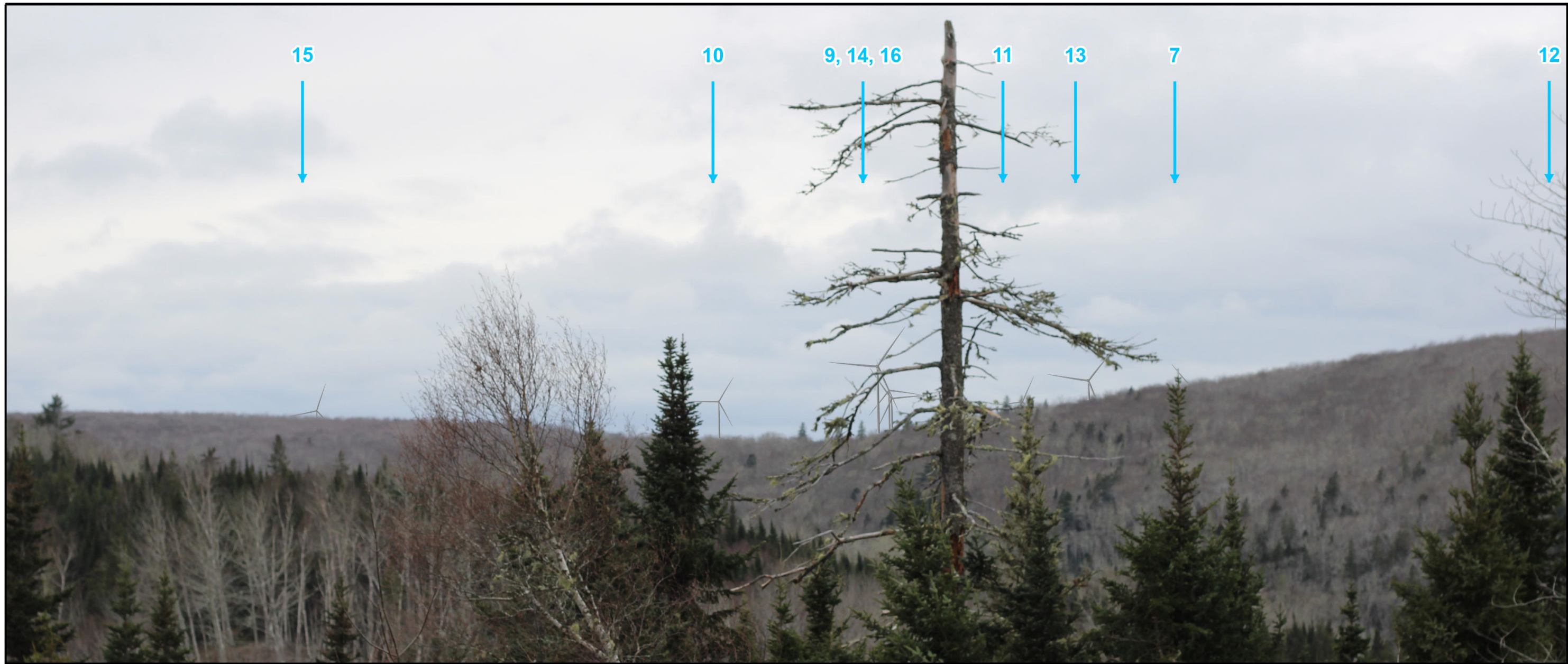
- Study Area
- Assessment Area
- Camera Locations
- Proposed Turbine Location
- Transportation**
- Trans-Canada Highway
- Road
- Unpaved Road
- Water Features**
- Mapped Stream
- Mapped Indefinite Stream
- Mapped Lakes and Rivers
- Mapped Wet Area



Coordinate System: NAD83 UTM Zone 20N Sources: Esri Basemaps, GeoNOVA, SNSIS, NRCan, NSNRR, ACCDC, IBA Canada

Date: May 2023	Project #: 21-8224
Scale: 1:40,000	Drawing #: 10.2A
Drawn By: E. Johnson	10.2A
Checked By: M. Savelle	

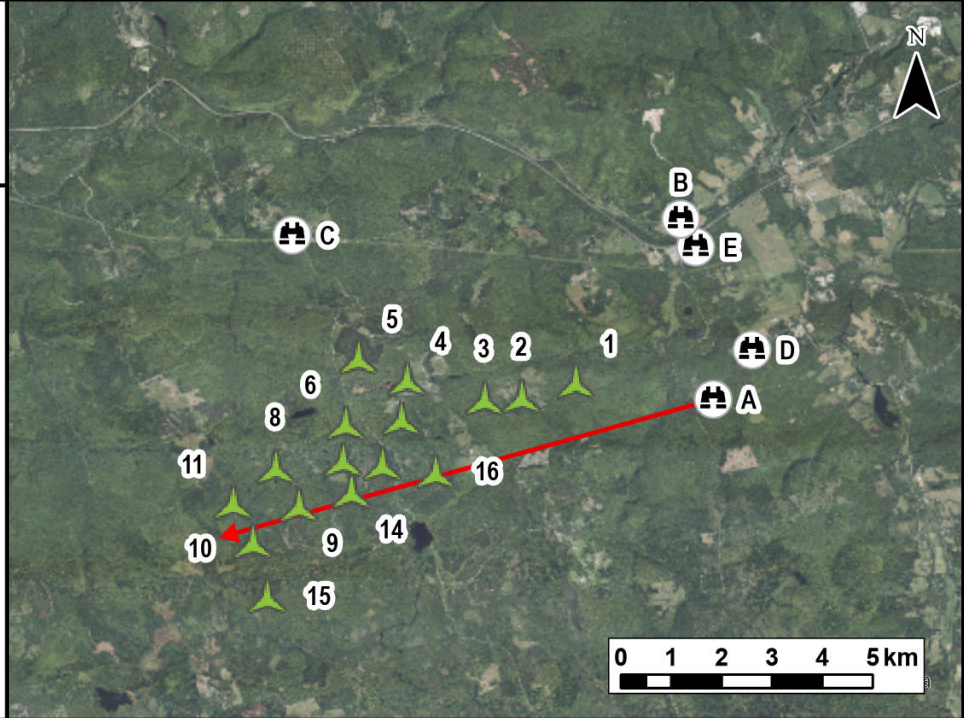




Notes:
 1. Data Sources: GeoNova, Client
 2. Basemaps: Esri, DigitalGlobe, GeoEye, Earthstar Geographics, CNES/Airbus DS, USDA, USGS, AeroGRID, IGN, and the GIS User Community
 3. Projection: NAD83 UTM Zone 20

Legend

- Camera Location
- Camera Bearing
- Proposed Turbine Location
- Turbines Visible



TECHNICAL INFORMATION

Visual Simulation Location:	Keppoch Road
View Coordinates:	Latitude: 45° 32' 16.8326" N Longitude: 62° 07' 26.3248" W Easting: 568394.60m Northing: 5043092.40m
Distance to Nearest Turbine:	2.8km
Direction of View:	Southwest, Heading 255°
Camera Make/ Model:	Canon EOS REBEL T7
Lens:	50 mm
Image Resolution:	6000 x 4000
Weather Conditions:	Overcast
Date of Photo:	2022/12/12
Time of Photo:	13:56
Photo Credit:	Strum Consulting

**Weavers Mountain
 Wind Energy Project -
 Visual Simulation
 Keppoch Road**



Date:	Project #:
April 2023	21-8224
Scale:	Drawing #:
1:150,000	10.2B
Drawn By:	
E. Johnson	
Checked By:	
M. Savelle	

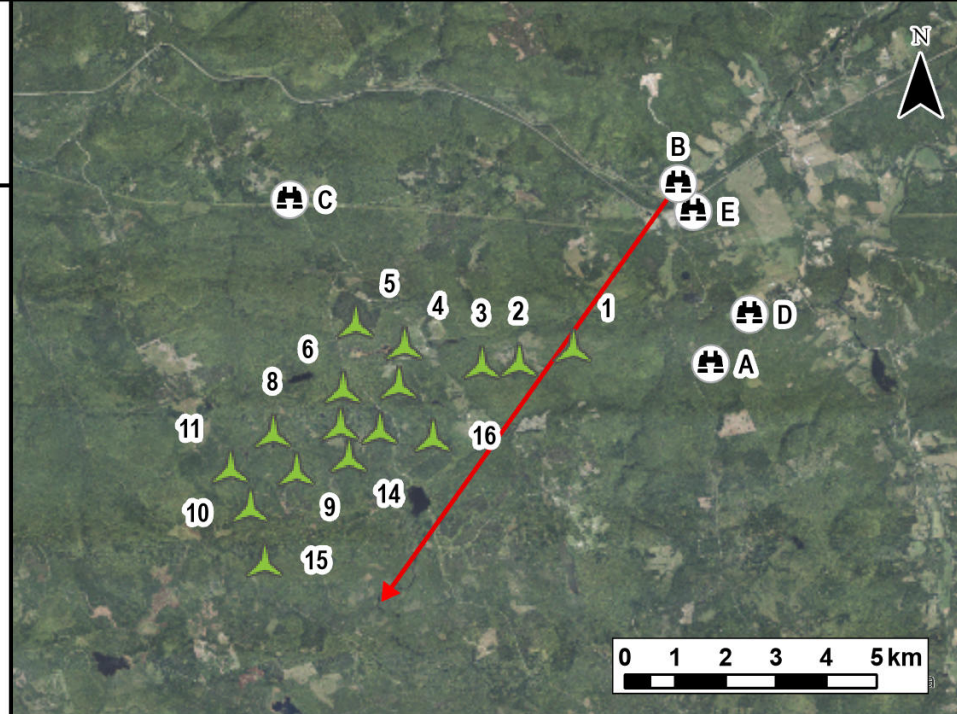


Notes:

1. Data Sources: GeoNova, Client
2. Basemaps: Esri, DigitalGlobe, GeoEye, Earthstar Geographics, CNES/Airbus DS, USDA, USGS, AeroGRID, IGN, and the GIS User Community
3. Projection: NAD83 UTM Zone 20

Legend

- Camera Location
- Camera Bearing
- Proposed Turbine Location
- Turbines Visible



TECHNICAL INFORMATION

Visual Simulation Location:	Highway 2
View Coordinates:	Latitude: 45° 34' 12.8341" N Longitude: 62° 07' 54.1594" W Easting: 567752.21m Northing: 5046665.71m
Distance to Nearest Turbine:	3.8km
Direction of View:	Southwest, Heading 216°
Camera Make/ Model:	Canon EOS REBEL T7
Lens:	50 mm
Image Resolution:	6000 x 4000
Weather Conditions:	Partly Cloudy
Date of Photo:	2022/10/24
Time of Photo:	13:07
Photo Credit:	Strum Consulting

**Weavers Mountain
Wind Energy Project -
Visual Simulation
Highway 2**



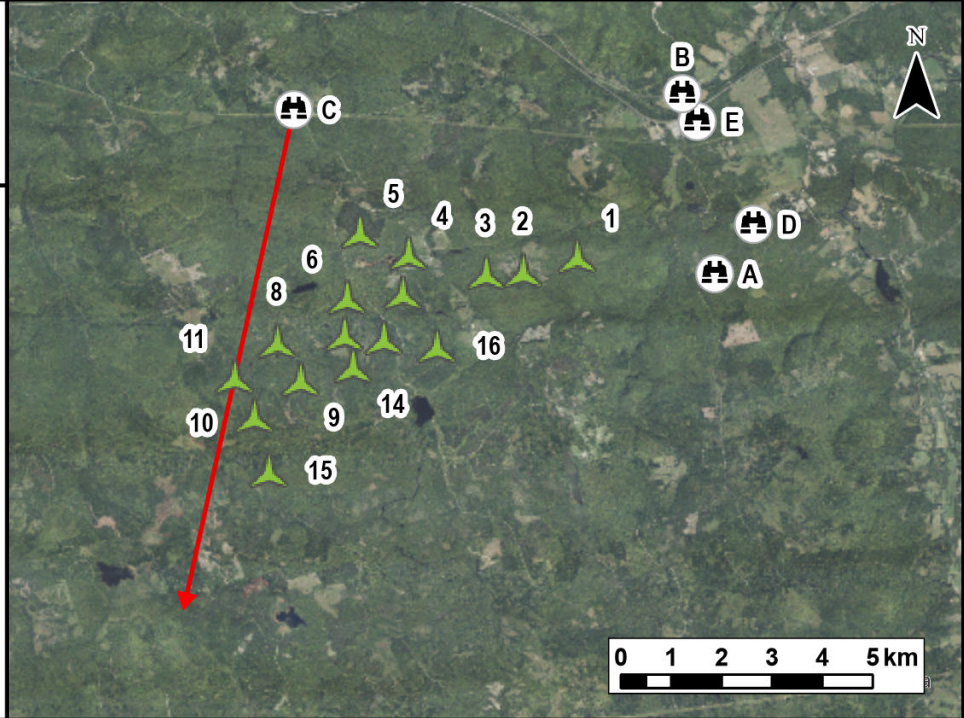
Date:	Project #:
April 2023	21-8224
Scale:	Drawing #:
1:150,000	10.2C
Drawn By:	
E. Johnson	
Checked By:	
M. Savelle	



Notes:
 1. Data Sources: GeoNova, Client
 2. Basemaps: Esri, DigitalGlobe, GeoEye, Earthstar Geographics, CNES/Airbus DS, USDA, USGS, AeroGRID, IGN, and the GIS User Community
 3. Projection: NAD83 UTM Zone 20

Legend

- Camera Location
- Camera Bearing
- Proposed Turbine Location
- Turbines Visible



TECHNICAL INFORMATION

Visual Simulation Location:	Weavers Mountain Road
View Coordinates:	Latitude: 45° 34' 05.0811" N Longitude: 62° 13' 50.0693" W Easting: 560040.21m Northing: 5046347.71m
Distance to Nearest Turbine:	2.7km
Direction of View:	Southwest, Heading 193°
Camera Make/ Model:	Canon EOS REBEL T7
Lens:	50 mm
Image Resolution:	6000 x 4000
Weather Conditions:	Overcast
Date of Photo:	2022/10/12
Time of Photo:	17:24
Photo Credit:	Strum Consulting

**Weavers Mountain
 Wind Energy Project -
 Visual Simulation
 Weavers Mountain Road**



Date:	Project #:
April 2023	21-8224
Scale:	Drawing #:
1:150,000	10.2D
Drawn By:	
E. Johnson	
Checked By:	
M. Savelle	