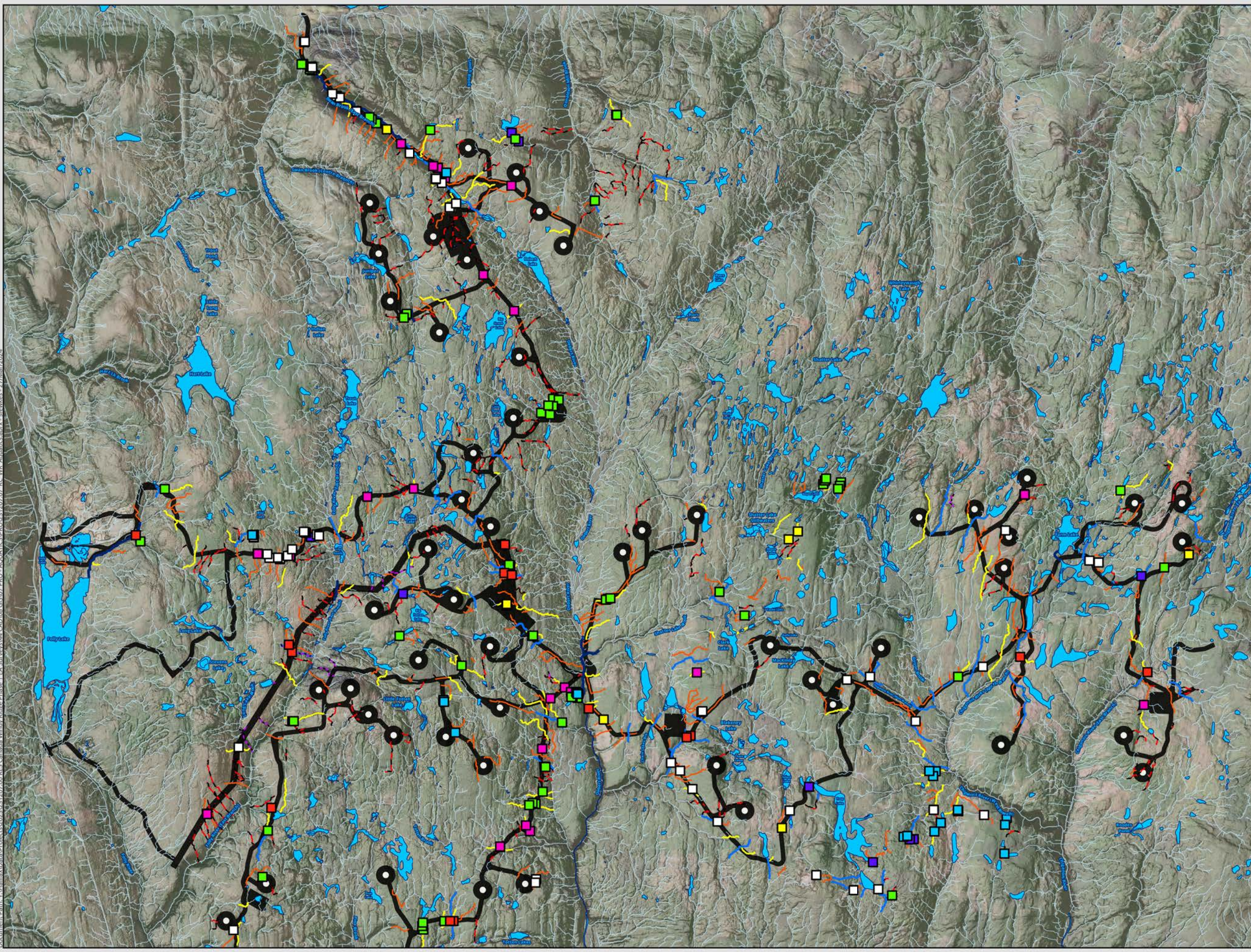


Document Path: \\Halifax\Shared\Projects\2023\21207\00_BES_Canada_Windy Ridge\Phase 1_EA_Surveys\44_CAD\08_GIS\07_PRO - AQUATICS\PROJ\21207_07_BC_WR_Aquatics.aprx - stewart - 27/Mar/2024



LEGEND

Barriers to Fish Movement

- Beaver Dam
- Culvert - Damaged or Blocked
- Culvert - Perched or Hanging
- Fish Barrier - Log Jam, Blow Down, Debris, Cascade
- Loss of Channel Definition / No Channel
- Underground Section
- Waterfall

Watercourse Assessments (CBCL, 2023)

- Watercourse Inaccessible For Assessment
- No Channel (WC Does Not Exist)
- Ephemeral Watercourse
- Intermittent Watercourse
- Small-Permanent Watercourse
- Large-Permanent Watercourse
- Predicted Watercourse

Nova Scotia Hydrologic Network (NSTD, 2023)

- Waterbody
- Potential Development Area
- Turbine Location



WINDY RIDGE WIND POWER PROJECT

Barriers to Fish Movement

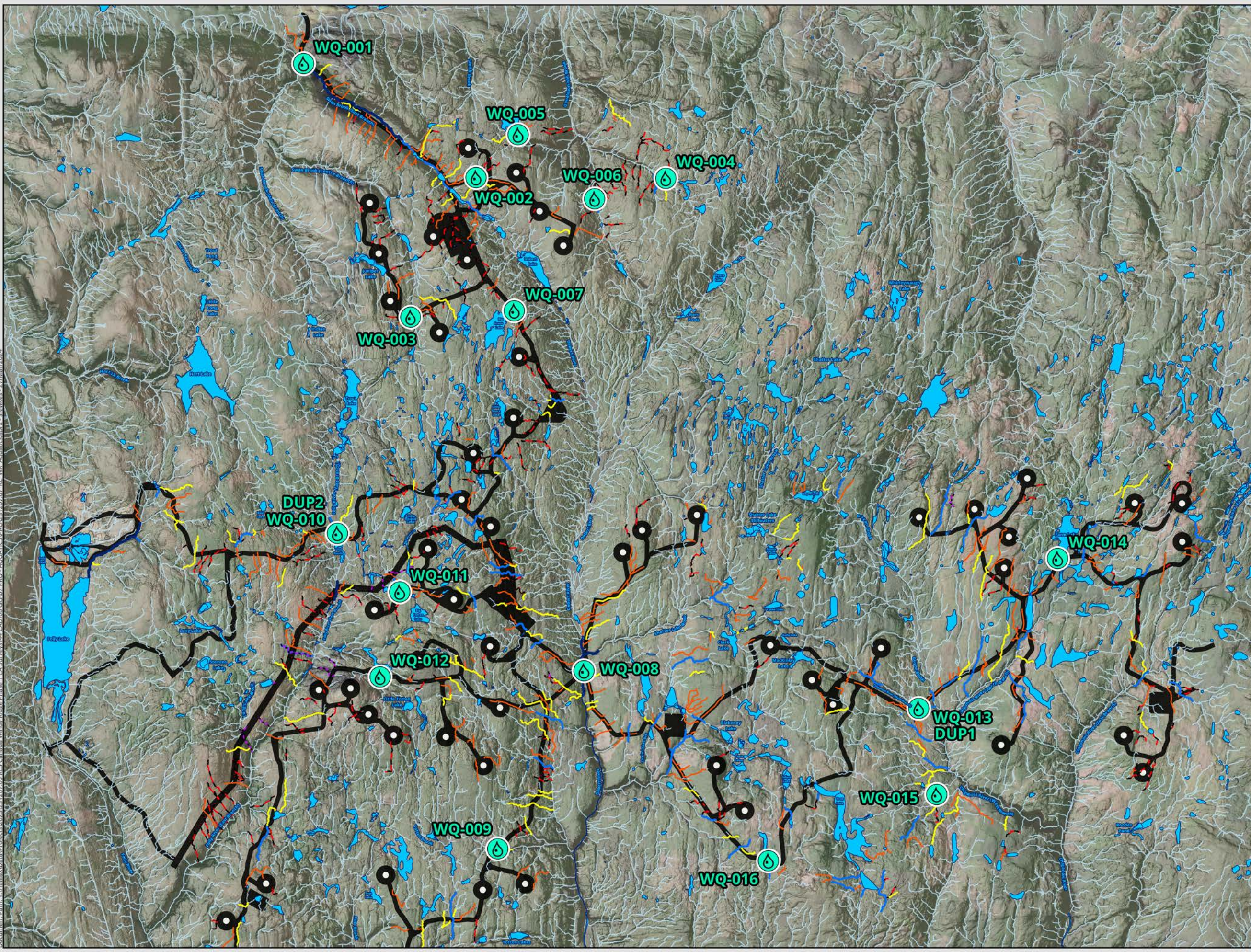
DATE: 2024-03-27	PROJ N°: 231207	FIGURE: 7.7
DRAWN BY: SF	CHECKED BY: MB	APPROVED: LH

NOTES:

0 500 1,000 2,000 m

SCALE: 1:56,000 Coordinate System: NAD 1983 UTM Zone 20N Units: Meter

Document Path: \\Halifax\Shared\Projects\2023\231207_00_BES_Canada_WindyRidge\Phase 1_EA_Surveys\44_CAD\08_GIS\07_PRO - AQUATICS\PROJ\231207_07_BC_WQ_Aquatics.aprx - stewart - 27/Mar/2024



LEGEND

- Water Quality Sampling Location
- Watercourse Assessments (CBCL, 2023)**
 - Predicted Watercourse
 - Watercourse Inaccessible For Assessment
 - No Channel (WC Does Not Exist)
 - Ephemeral Watercourse
 - Intermittent Watercourse
 - Small-Permanent Watercourse
 - Large-Permanent Watercourse
- Nova Scotia Hydrologic Network (NSTD, 2023)**
 - Waterbody
 - Potential Development Area
 - Turbine Location



WINDY RIDGE WIND POWER PROJECT

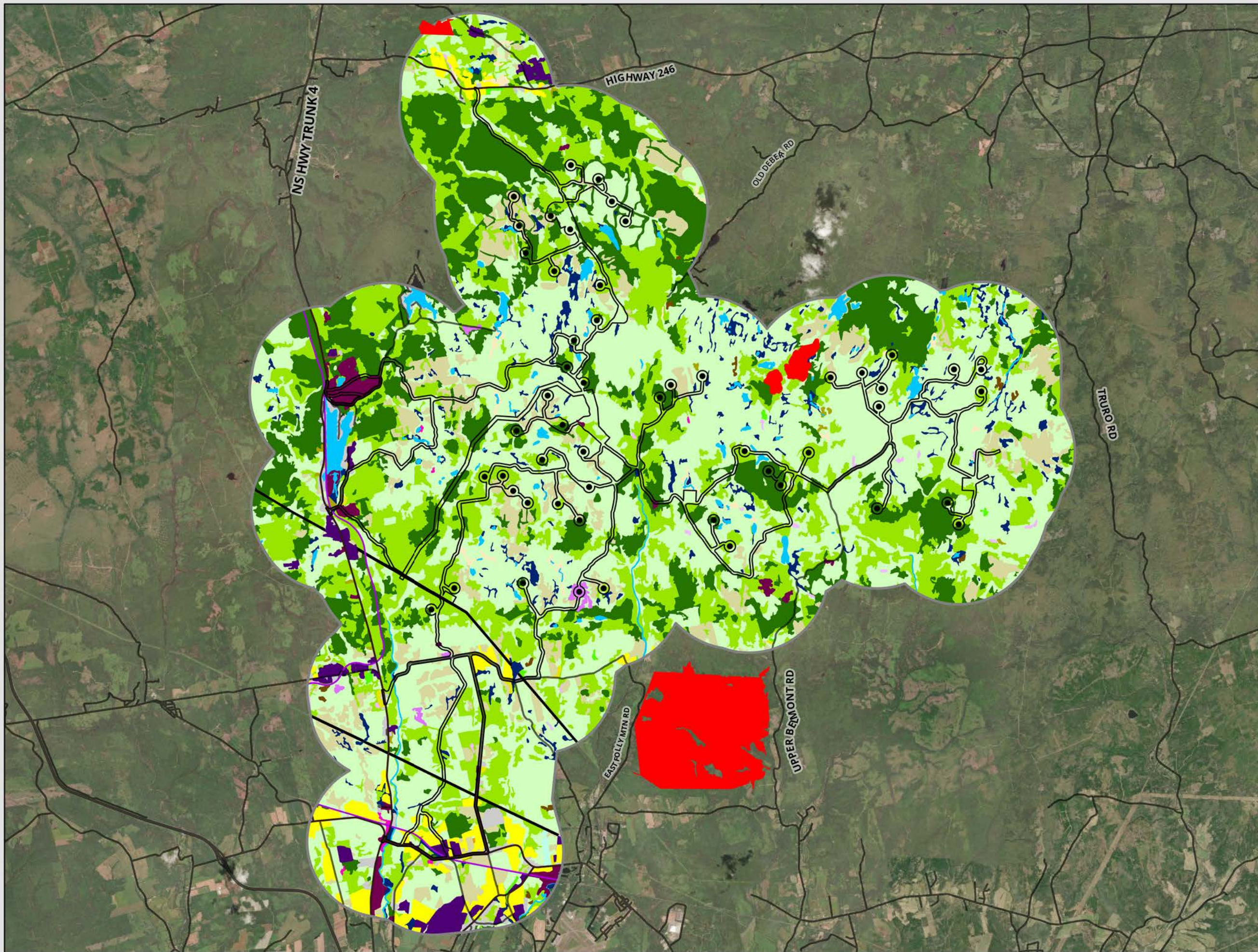
Water Quality Sampling Locations

DATE: 2024-03-27	PROJ N°: 231207	FIGURE: 7.8
DRAWN BY: SF	CHECKED BY: MB	APPROVED: LH

NOTES:

0 500 1,000 2,000 m

SCALE: 1:56,000 Coordinate System: NAD 1983 UTM Zone 20N
Units: Meter



LEGEND

- Turbine Location
- ⬢ Potential Development Area
- ▭ 2km Buffer
- Land Cover Class**
- Wetlands
- Natural Stand - Cotype Unclassified
- Sivicultural Treatment - Cotype Unclassified
- Old Field
- Windthrow
- Dead
- Brush
- Alders less than 75%
- Alders greater than 75%
- Clear Cut
- Beaver Flowage
- Inland Water
- Agriculture
- Urban
- Blueberries
- Other
- Gravel Pit
- Powerline Corridor
- Road Corridor
- Rail Corridor
- Softwood
- Mixedwood
- Hardwood
- Old Growth Forest Policy
- Old Growth
- Addressed Road (NSTD, 2023)

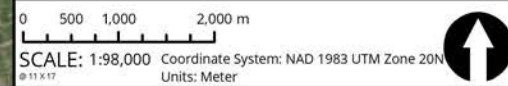


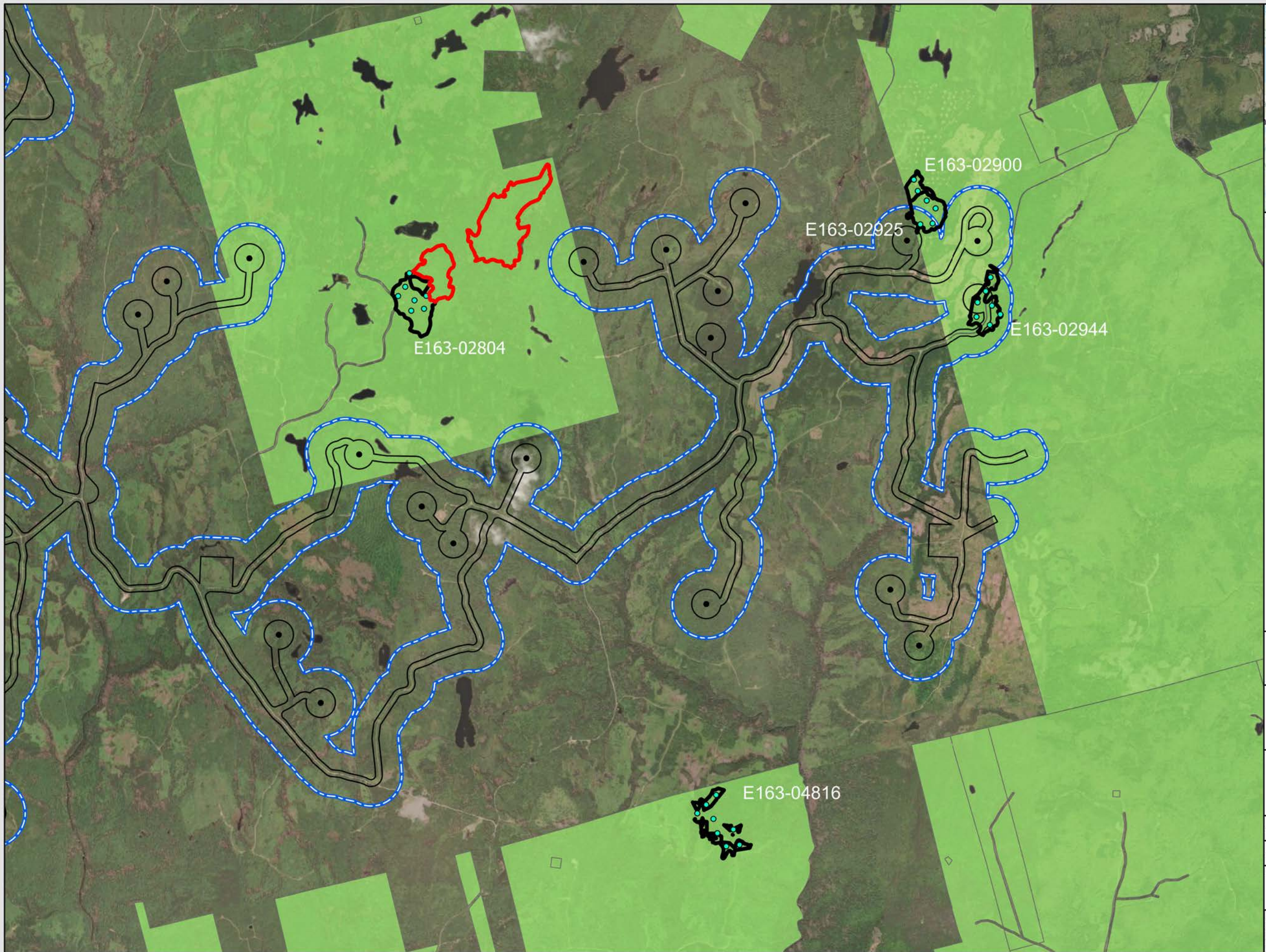
**WINDY RIDGE
WIND POWER PROJECT**

**Land Cover - Nova Scotia
Forest Inventory Layer**

DATE: 2024-04-04	PROP N°: 231207	FIGURE: 8.1
DRAWN BY: MC	CHECKED BY: NM	APPROVED: LH

NOTES:





- LEGEND**
- Local Assessment Area for Flora
 - Potential Development Area
 - Turbine Location
 - Crown Lands
- Old Growth Field Assessments**
- Survey Plots
 - Not Old Growth (assessed by Strum Consulting)
 - Old Growth Forest Policy (NSDNRR, 2024)



**WINDY RIDGE
WIND POWER PROJECT**

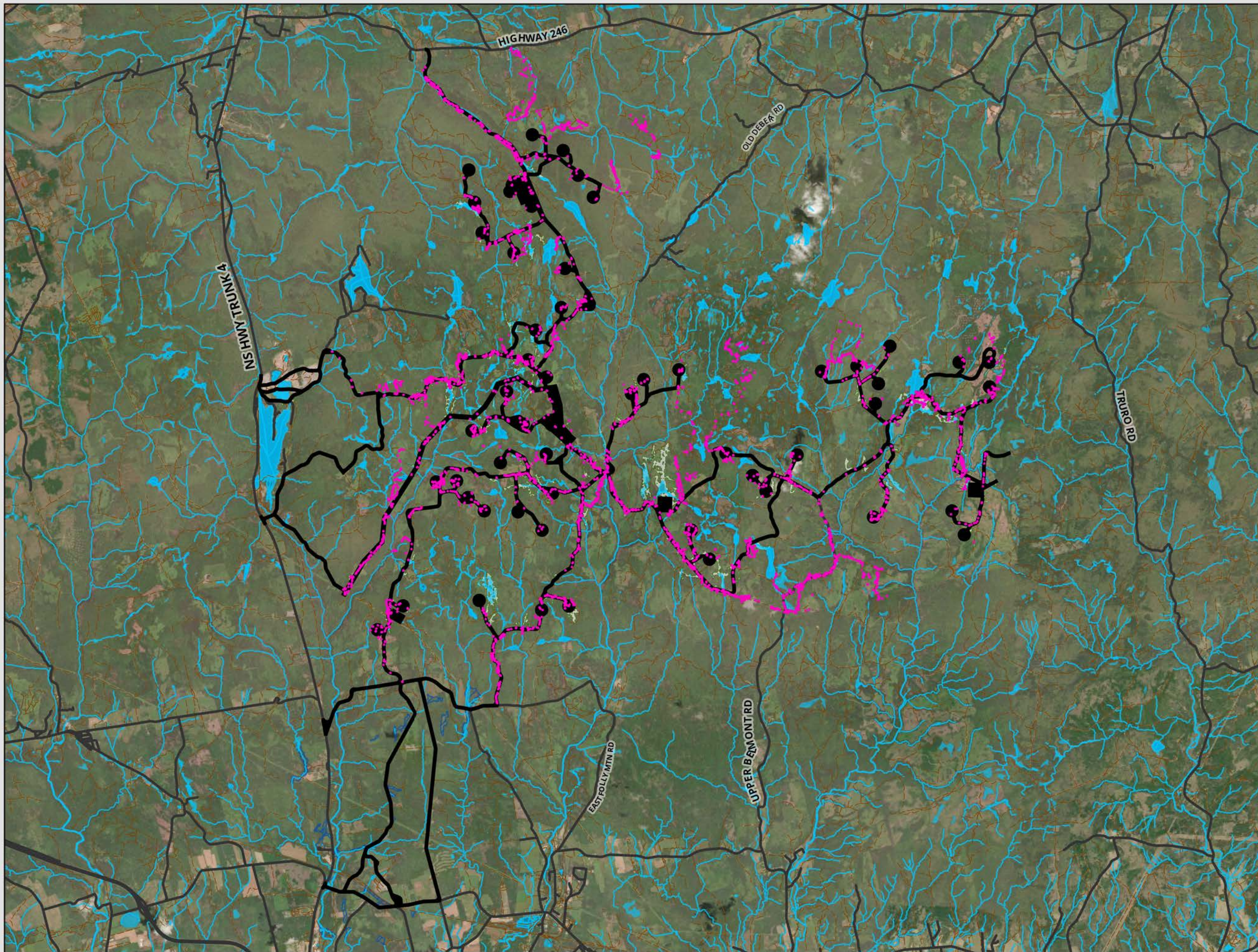
**Field Assessed
Old Growth Forest**

DATE: 2024-05-24	PROP N°: 231207	FIGURE: 8.2
DRAWN BY: MC	CHECKED BY: NM	APPROVED: LH

NOTES:

0 500 1,000 2,000 m

SCALE: 1:37,500 Coordinate System: NAD 1983 UTM Zone 20N
Units: Meter



- LEGEND**
- Surveyed Areas
 - Potential Development Area
 - ▭ Wetlands (Delineated, CBCL 2023)
 - ▭ Provincial Wetlands
- Nova Scotia Topographic Database (2023)**
- Addressed Roads
 - Trail / Resource Road / No Maintenance
 - ▭ Waterbody
 - Watercourses



**WINDY RIDGE
WIND POWER PROJECT**

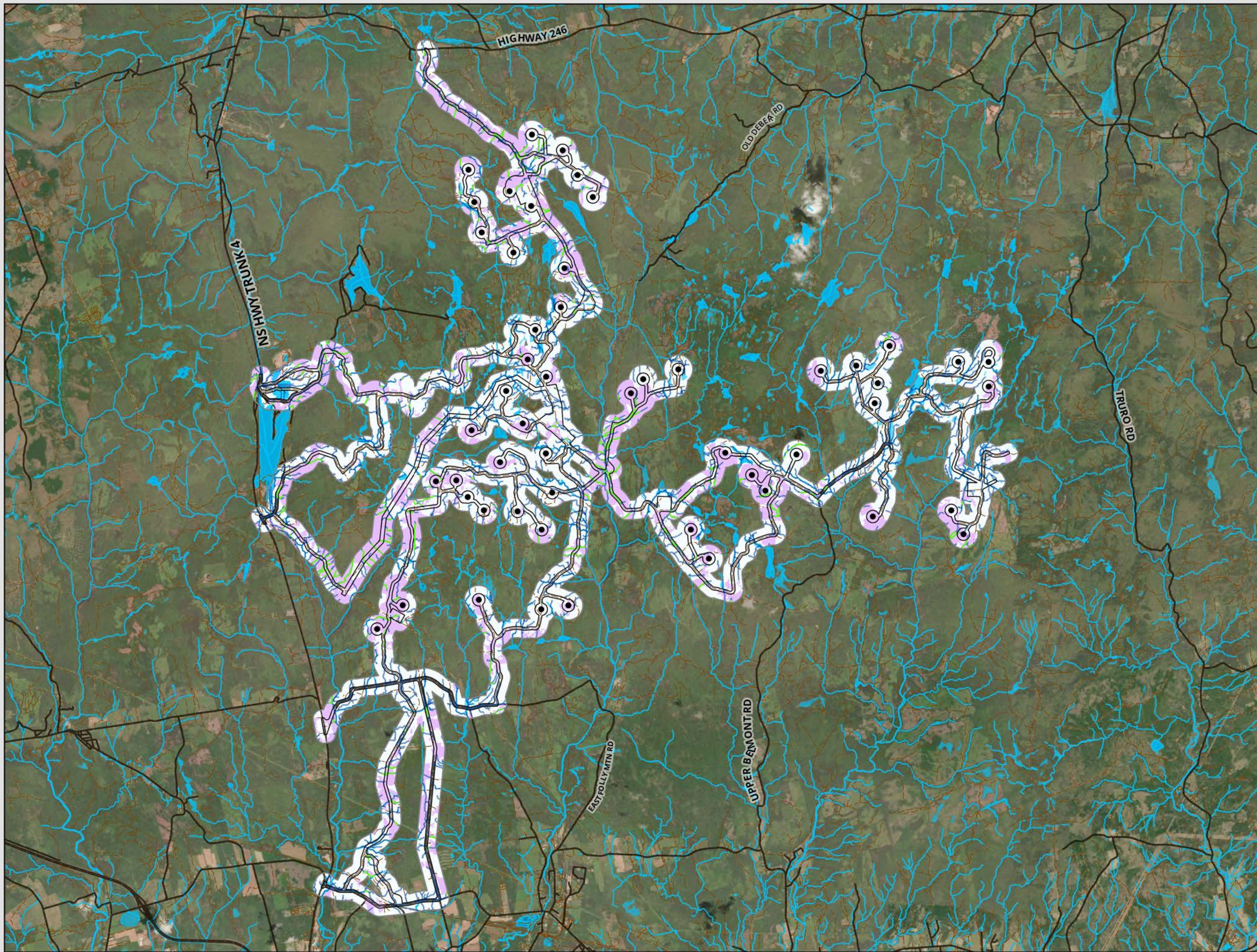
**Vegetation Inventory
Surveyed Areas**

DATE: 2024-04-04	PROP N°: 231207	FIGURE: 8.3
DRAWN BY: MC	CHECKED BY: NM	APPROVED: LH

NOTES:

0 500 1,000 2,000 m

SCALE: 1:88,000 Coordinate System: NAD 1983 UTM Zone 20N
Units: Meter



- LEGEND**
- Local Assessment Area
 - Potential Development Area
 - Turbine Location
 - Intact Mixed and Harwood Stands
 - Streams (DEM - CBCL, 2024)
- Possible Suitable Habitat**
- Not Suitable
 - Suitable
- Nova Scotia Topographic Database (2023)**
- Addressed Road
 - Trail / Resource Road / No Maintenance
 - Watercourse
 - Waterbody



**WINDY RIDGE
WIND POWER PROJECT**

**Possible Suitable Habitat
for Eastern Waterfan**

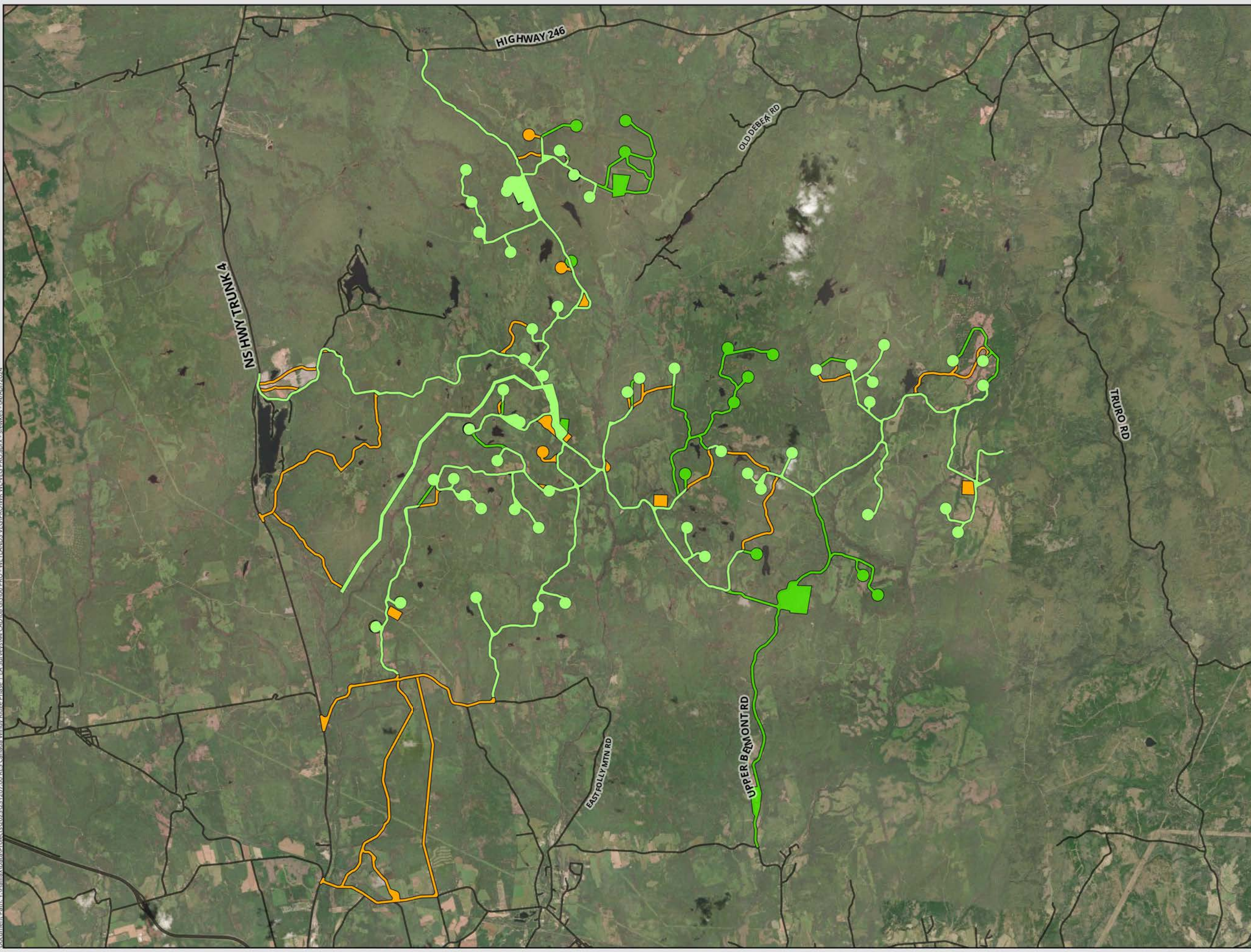
DATE: 2024-04-04	PROP N°: 231207	FIGURE: 8.4
DRAWN BY: MC	CHECKED BY: NM	APPROVED: LH

NOTES:

0 500 1,000 2,000 m

SCALE: 1:88,000 Coordinate System: NAD 1983 UTM Zone 20N
Units: Meter

Document Path: \\Halifax\Data\Projects\2023\231207\00 BEC Canada Windy Ridge Phase 1 EA_Survey\44 CAD\08 GIS\06 PRO - WETLANDS VEG\PRO\WR WL VEG PRO.aprx - sfewkes - 04/Apr/2024



- LEGEND**
- Survey Coverage
 - Survey Coverage Outside of PDA
 - Area to be Surveyed in 2024



**WINDY RIDGE
WIND POWER PROJECT**

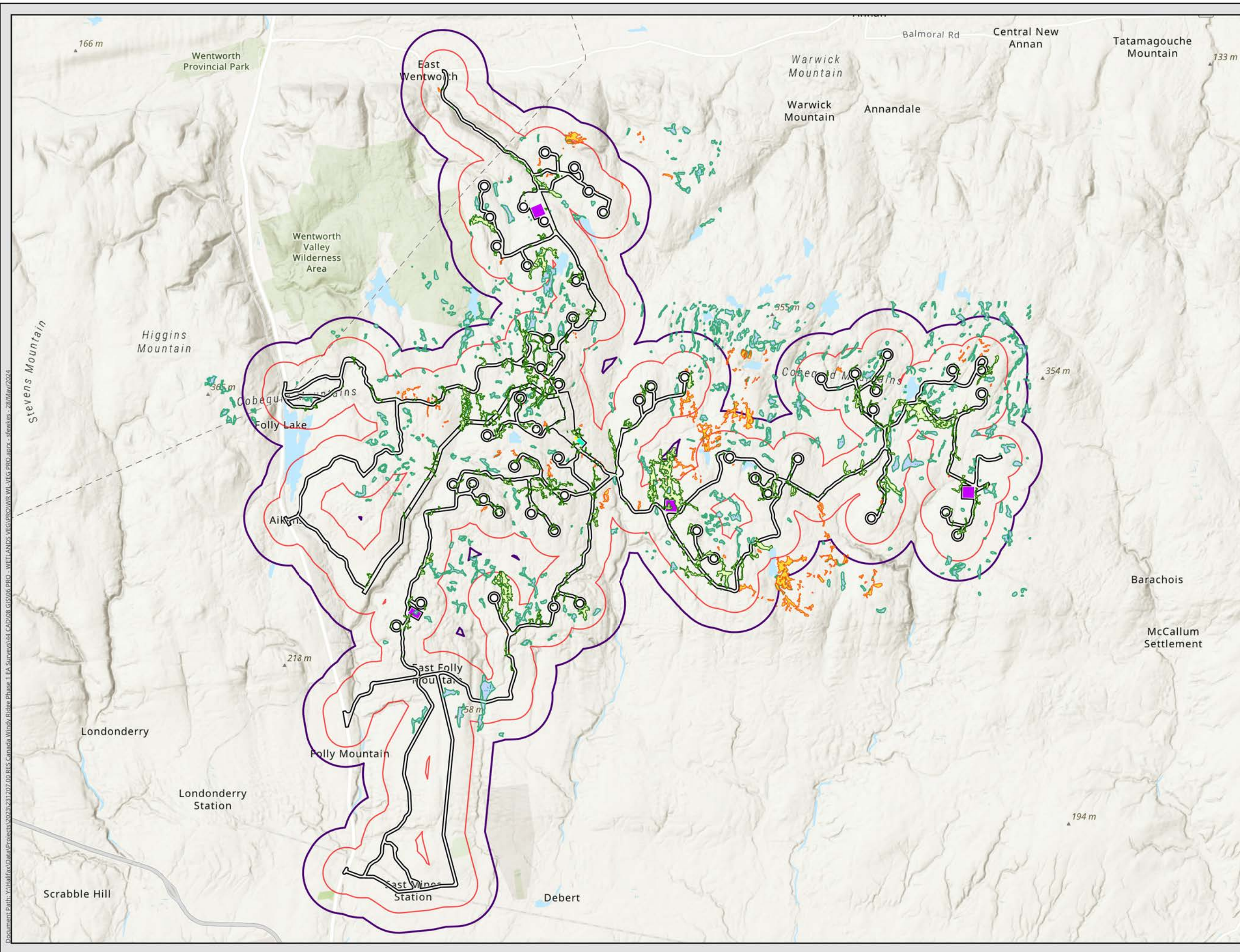
**Wetland Survey
Coverage**

DATE: 2024-04-04	PROJ N°: 231207	FIGURE: 9.1
DRAWN BY: NH	CHECKED BY: LR	APPROVED: LH

NOTES:

0 1,000 2,000 4,000 m

SCALE: 1:88,000 Coordinate System: NAD 1983 (CSRS) v6 UTM Zone 20N
Units: Meter



LEGEND

- Delineated Wetland (CBCL 2023)
- Field Verified Wetland (CBCL 2023)
- Provincial Wetland
- Local Assessment Area for Wetlands
- Regional Assessment Area for Wetlands

Project Components

- Turbine Location
- Potential Development Area
- Laydown Area
- Operations & Maintenance Building
- Substation Location



**WINDY RIDGE
WIND POWER PROJECT**

**Wetlands within the
Assessed Area**

DATE: 2024-05-28	PROJ N°: 231207	FIGURE: 9.2
DRAWN BY: NH	CHECKED BY: LR	APPROVED: LH

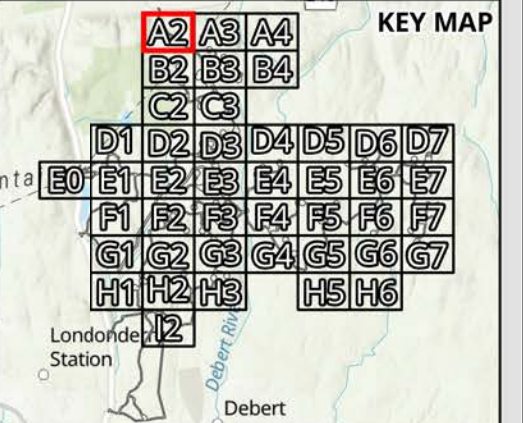
NOTES:

0 1,000 2,000 4,000 m

SCALE: 1:90,000 Coordinate System: NAD 1983 (CSRS) v6 UTM Zone 20N
Units: Meter

Document Path: \\HalifaxData\Projects\2023\231207\00_BES_Canada_Windy Ridge Phase 1 EA_Survey\441_CAD\08_GIS\06_PROJ_WETLANDS_VEG\PROJ_WL_VEG_PRO.aprx - stewart - 28/May/2024

Document Path: Y:\Halifax\Dataportal\Projects\2023\231207_00_BES_Canada_Windy Ridge Phase 1 EA_Survey\44 CAD\08 GIS\06 PRO - WETLANDS VEG\PRO\WR WL-VEG-PRO.aprx - nhill - 28/Mar/2024



- LEGEND**
- Delineated Wetland (CBCL 2023)
 - Field Verified Wetland (CBCL 2023)
 - Provincial Wetland
 - Waterbody (Provincial)
- Project Components**
- Turbine Location
 - Potential Development Area
 - Laydown Area
 - Operations & Maintenance Building
 - Substation Location



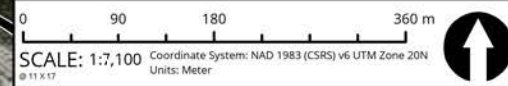
**WINDY RIDGE
WIND POWER PROJECT**

**Wetland Delineation
Survey Results:
Page 1 of 43**

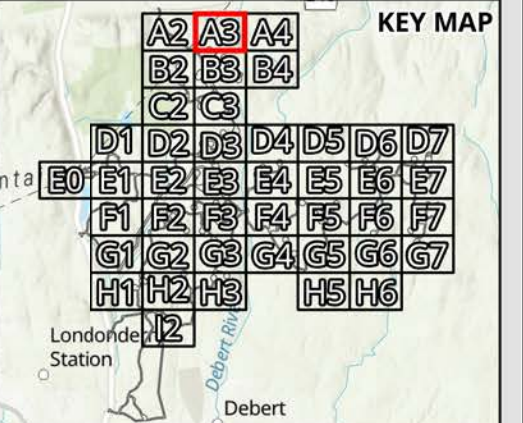
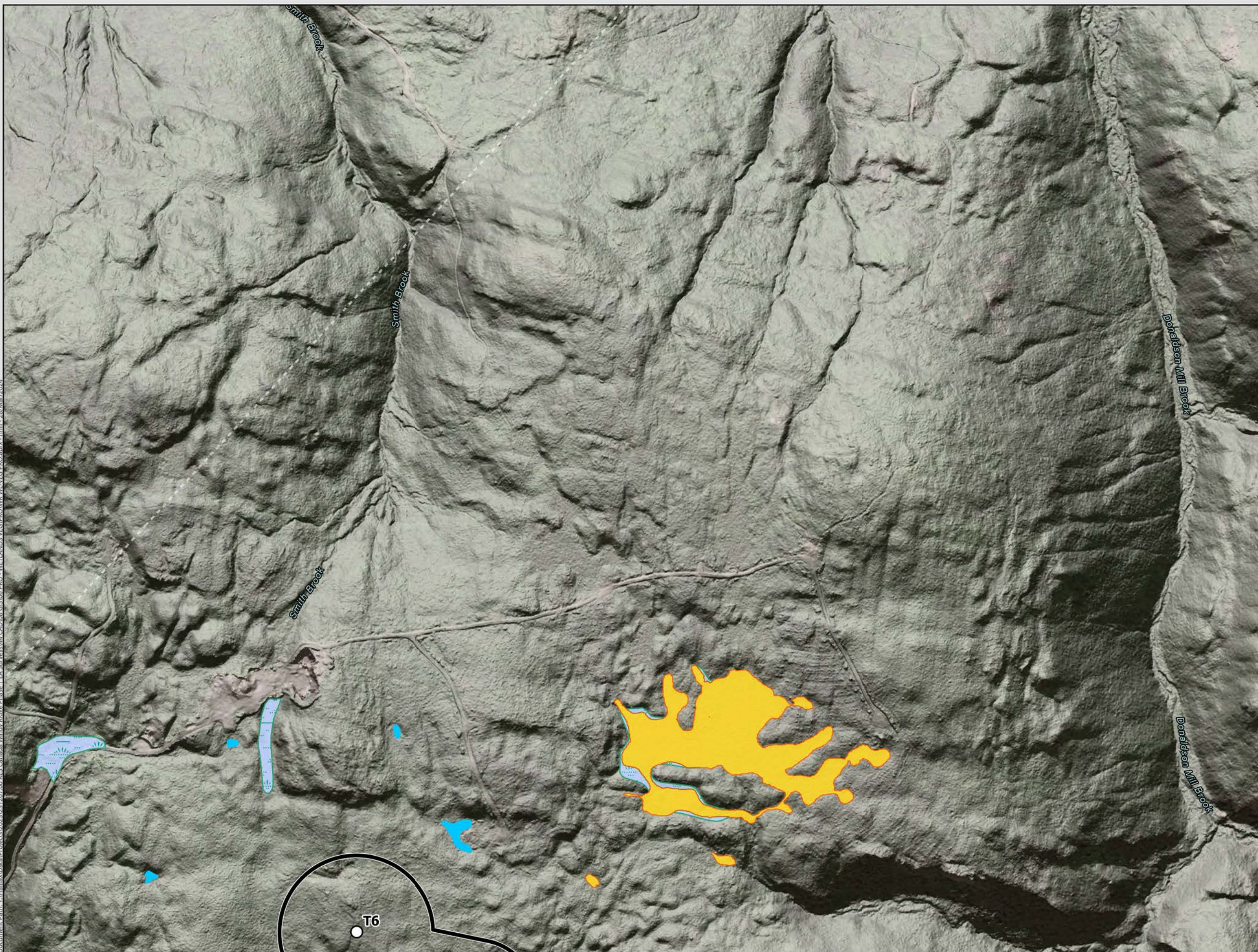
DATE: 2024-03-28 PROJ N°: 231207 FIGURE: **9.3**

DRAWN BY: NH CHECKED BY: LR APPROVED: LH

NOTES:



Document Path: \\Halifax\Data\Projects\2023\231207\00_BEC_Canada_WindyRidge\Phase 1_EA_Survey\44_CAD\08_GIS\06_PRO - WETLANDS_VEG\PROWR_WI_VEG_PRO.aprx - nhill - 28/Mar/2024



- LEGEND**
- Delineated Wetland (CBCL 2023)
 - Field Verified Wetland (CBCL 2023)
 - Provincial Wetland
 - Waterbody (Provincial)
- Project Components**
- Turbine Location
 - Potential Development Area
 - Laydown Area
 - Operations & Maintenance Building
 - Substation Location



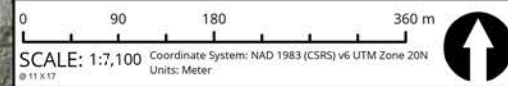
WINDY RIDGE
WIND POWER PROJECT

**Wetland Delineation
Survey Results:
Page 2 of 43**

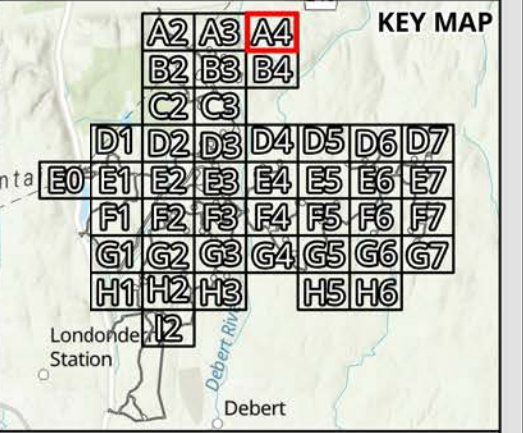
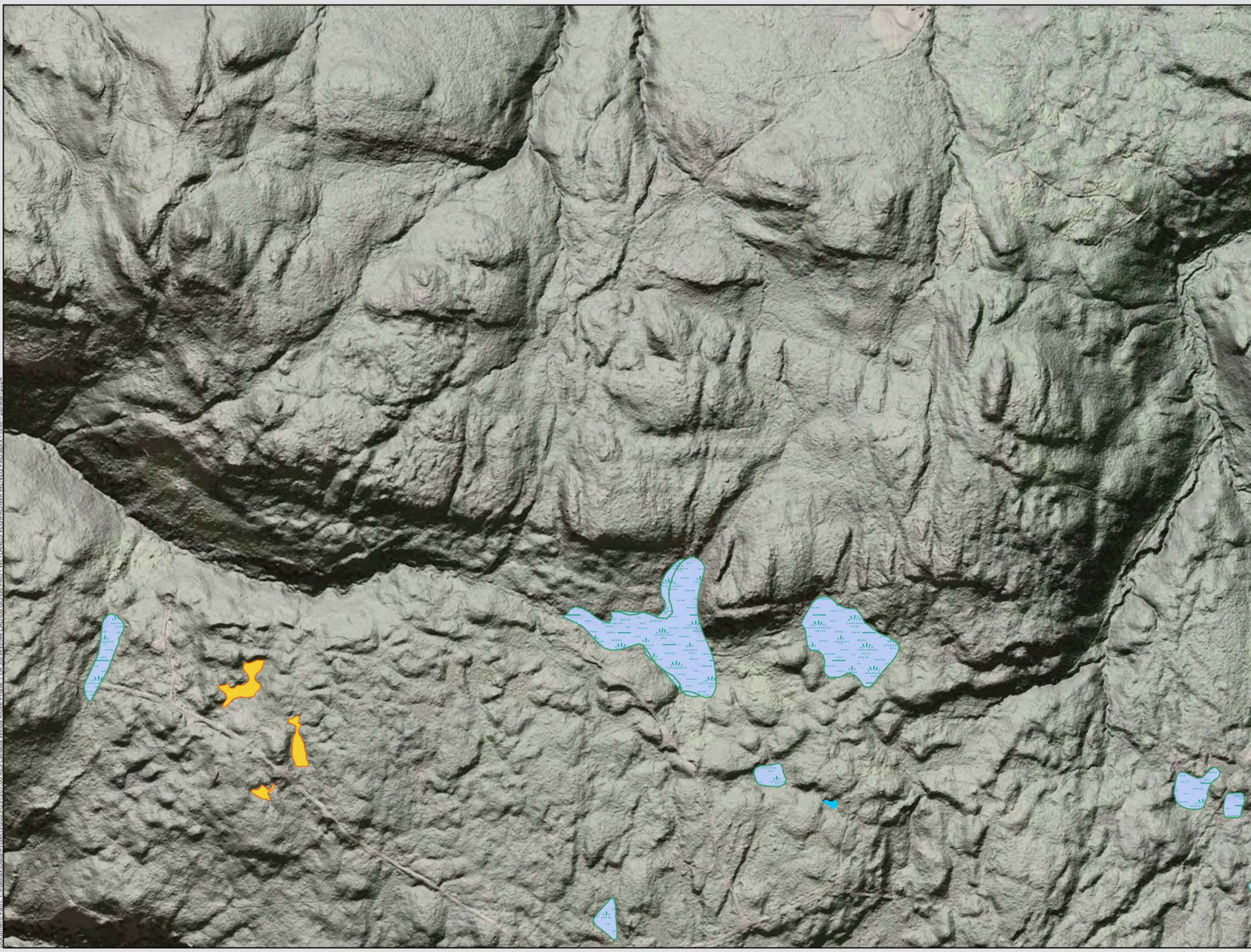
DATE: 2024-03-28 PROJ N°: 231207 FIGURE: **9.3**

DRAWN BY: NH CHECKED BY: LR APPROVED: LH

NOTES:



Document Path: \\Halifax\Data\Projects\2023\21207\00\BES_Canada_Windy_Ridge_Phase 1_EA_Survey\44_CAD\08_GIS\06_PRO - WETLANDS_VEG\PROWR_WI_VEG_PRO.aprx - nhill - 28/Mar/2024



- LEGEND**
- Delineated Wetland (CBCL 2023)
 - Field Verified Wetland (CBCL 2023)
 - Provincial Wetland
 - Waterbody (Provincial)
- Project Components**
- Turbine Location
 - Potential Development Area
 - Laydown Area
 - Operations & Maintenance Building
 - Substation Location



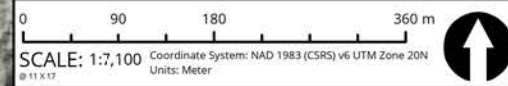
WINDY RIDGE
WIND POWER PROJECT

**Wetland Delineation
Survey Results:
Page 3 of 43**

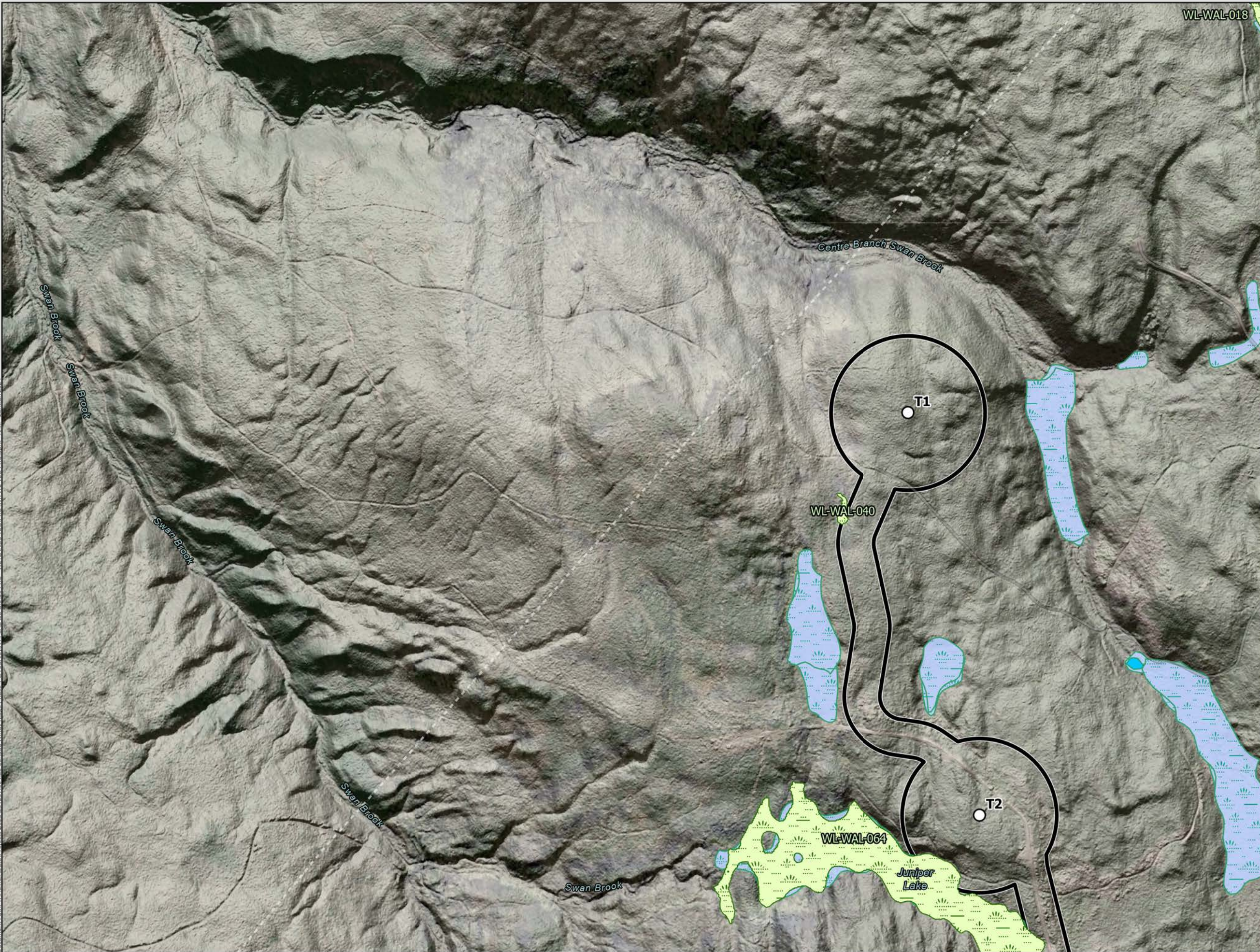
DATE: 2024-03-28 PROJ N°: 231207 FIGURE: **9.3**

DRAWN BY: NH CHECKED BY: LR APPROVED: LH

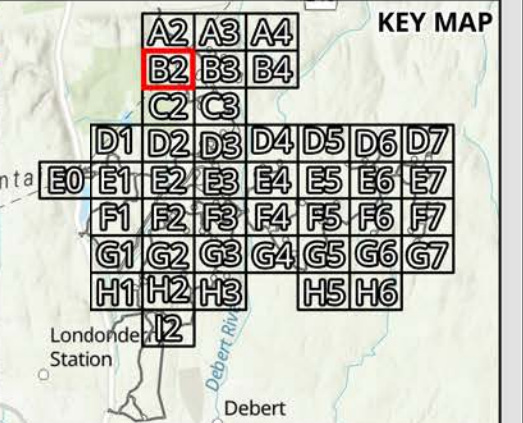
NOTES:



Document Path: \\Halifax\Data\Projects\2023\21707\00_BEC_Canada_Windy Ridge Phase 1 EA_Survey\44_CAD\08_GIS\06_PRO - WETLANDS_VEG\PROWR_WL_VEG_PRO.aprx - nhill - 28/Mar/2024



WL-WAL-018



LEGEND

- Delineated Wetland (CBCL 2023)
 - Field Verified Wetland (CBCL 2023)
 - Provincial Wetland
 - Waterbody (Provincial)
- Project Components**
- Turbine Location
 - Potential Development Area
 - Laydown Area
 - Operations & Maintenance Building
 - Substation Location



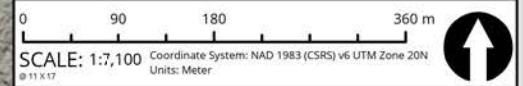
**WINDY RIDGE
WIND POWER PROJECT**

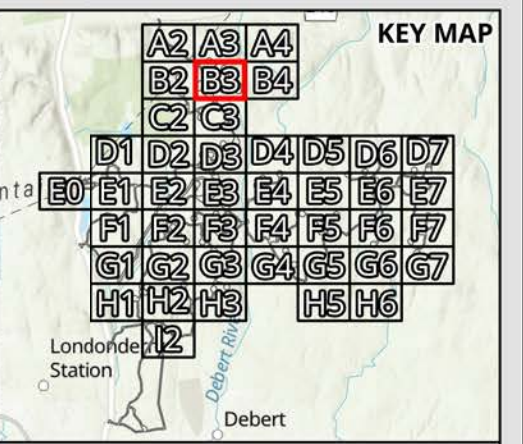
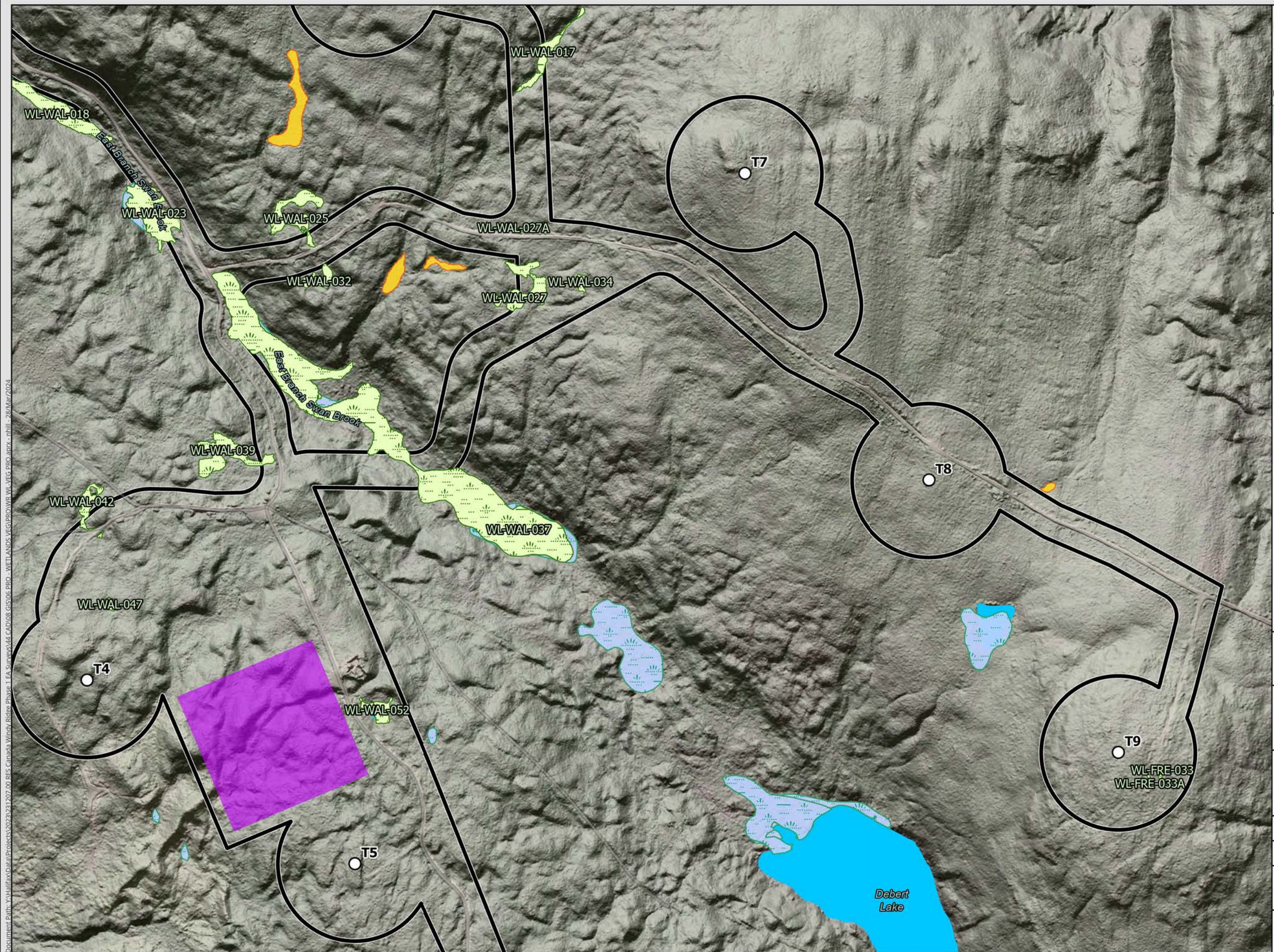
**Wetland Delineation
Survey Results:
Page 4 of 43**

DATE: 2024-03-28 PROJ N°: 231207 FIGURE: **9.3**

DRAWN BY: NH CHECKED BY: LR APPROVED: LH

NOTES:





- LEGEND**
- Delineated Wetland (CBCL 2023)
 - Field Verified Wetland (CBCL 2023)
 - Provincial Wetland
 - Waterbody (Provincial)
- Project Components**
- Turbine Location
 - Potential Development Area
 - Laydown Area
 - Operations & Maintenance Building
 - Substation Location



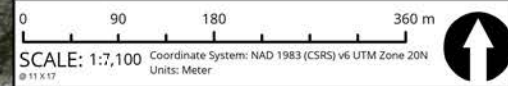
**WINDY RIDGE
WIND POWER PROJECT**

**Wetland Delineation
Survey Results:
Page 5 of 43**

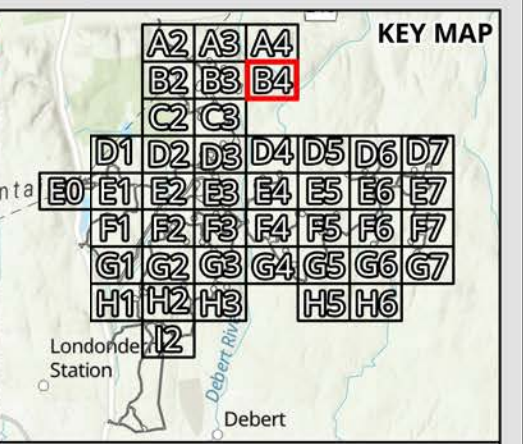
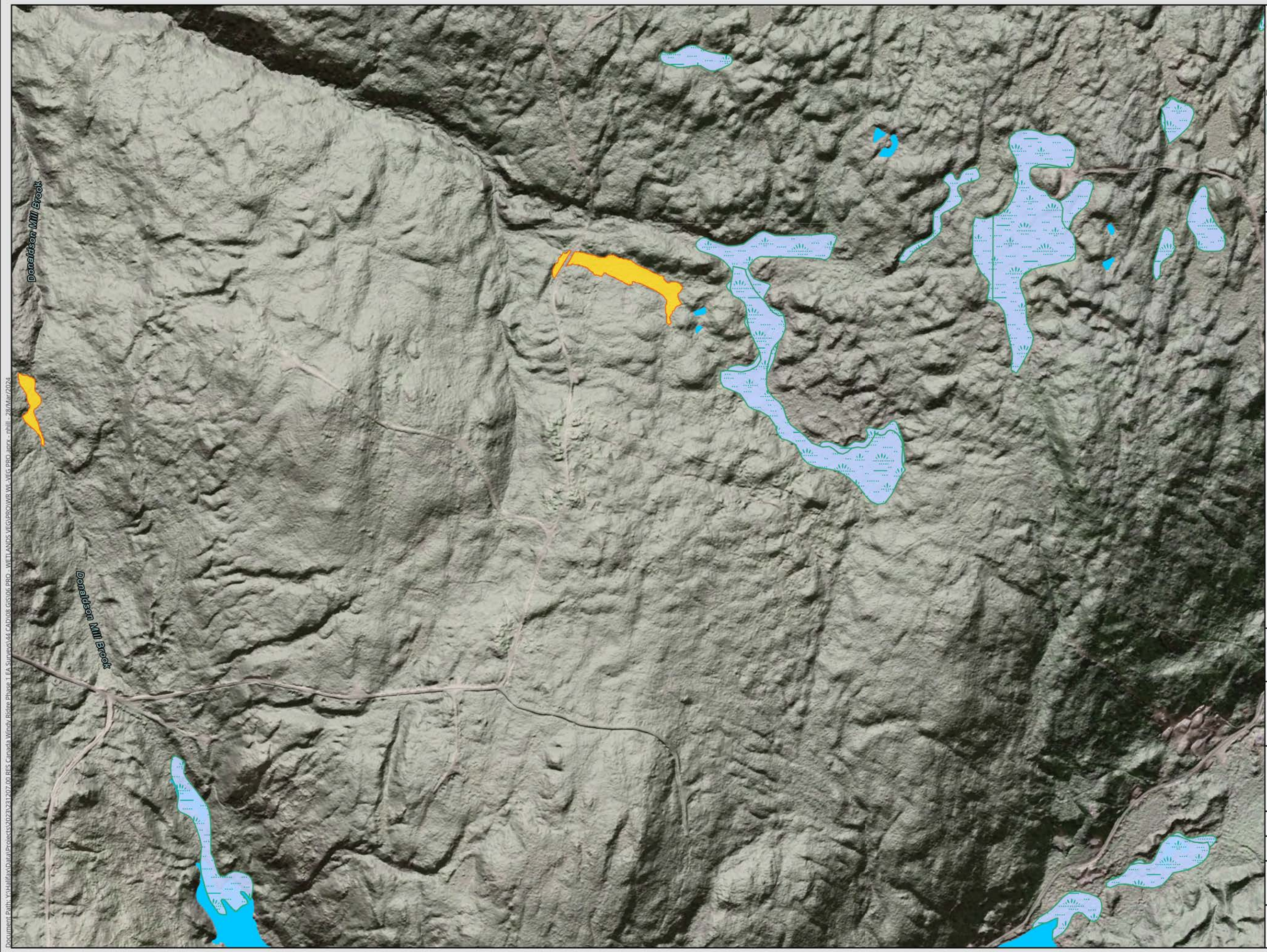
DATE: 2024-03-28 PROJ N°: 231207 FIGURE: **9.3**

DRAWN BY: NH CHECKED BY: LR APPROVED: LH

NOTES:



Document Path: \\H:\Data\Projects\2023\231207\00_BEC_Canada_Windy_Ridge_Phase_1_EA_Surveys\44_CAD\08_GIS\06_PRO-WETLANDS_VEG\PROWR_WL_VEG_PRO.aprx - nhill - 28/Mar/2024



LEGEND

- Delineated Wetland (CBCL 2023)
- Field Verified Wetland (CBCL 2023)
- Provincial Wetland
- Waterbody (Provincial)

Project Components

- Turbine Location
- Potential Development Area
- Laydown Area
- Operations & Maintenance Building
- Substation Location



**WINDY RIDGE
WIND POWER PROJECT**

**Wetland Delineation
Survey Results:
Page 6 of 43**

DATE: 2024-03-28	PROJ N°: 231207	FIGURE: 9.3
DRAWN BY: NH	CHECKED BY: LR	APPROVED: LH

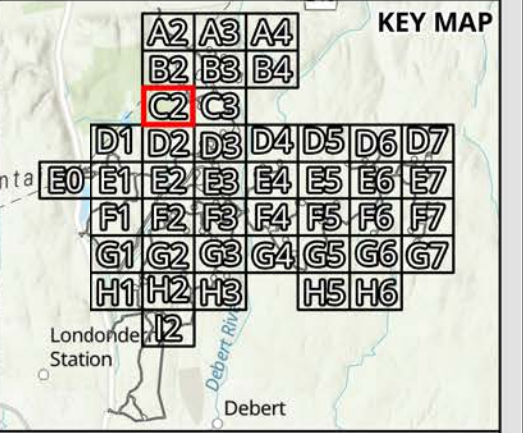
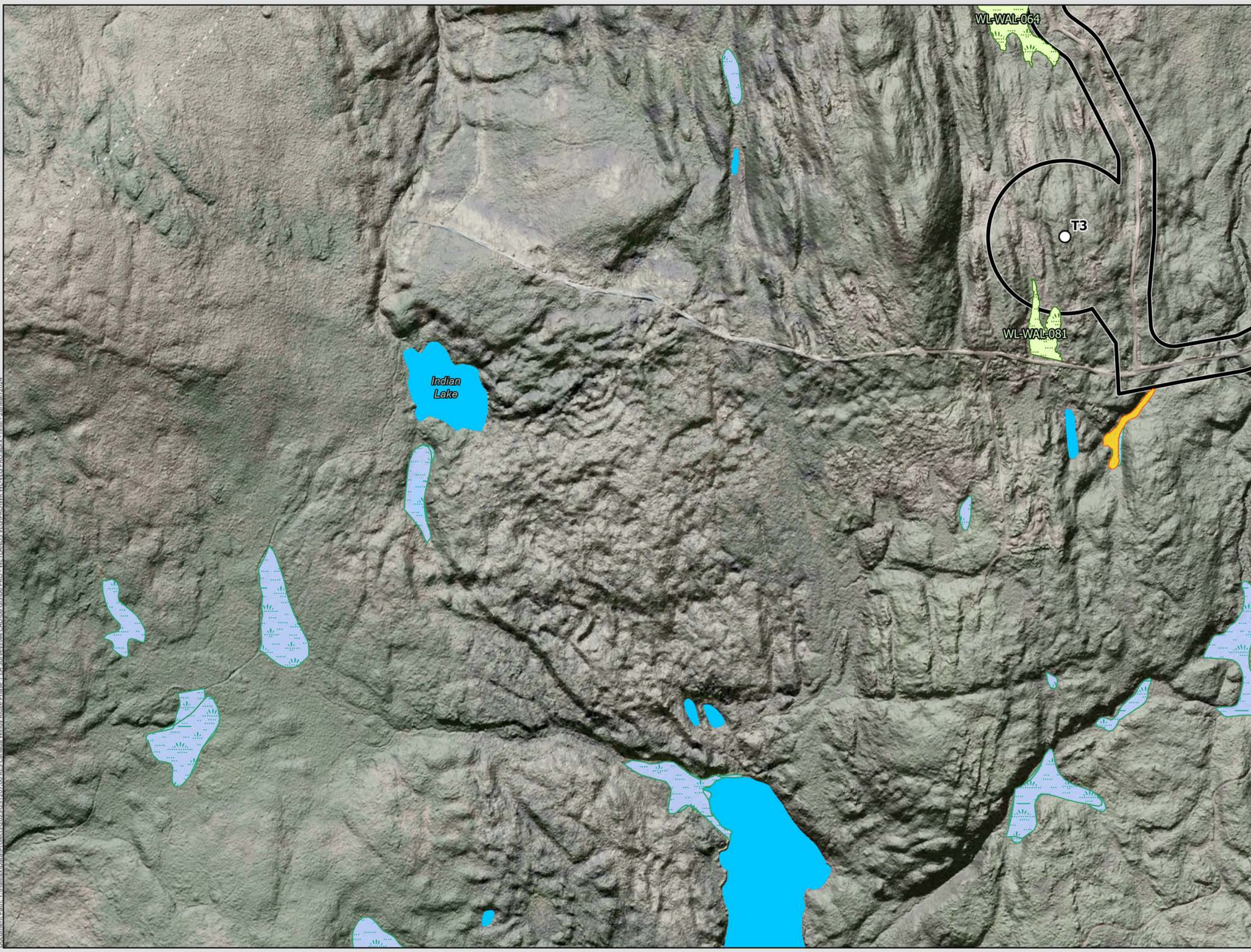
NOTES:

0 90 180 360 m

SCALE: 1:7,100 Coordinate System: NAD 1983 (CSRS) v6 UTM Zone 20N
Units: Meter

Document Path: \\HalifaxData\Projects\2023\231207\00_BES_Canada_Windy_Ridge_Phase_1_EA_Surveys\44_CAD\08_GIS\06_PRO - WETLANDS_VEG\PROWR_WL_VEG_PRO.aprx - nhll - 28/Mar/2024

Document Path: \\HalifaxData\Projects\2023\231207\00_BEC_Canada_Windy Ridge Phase 1 EA_Survey\44_CAD\08_GIS\06_PRO - WETLANDS_VEG\PROWR WL_VEG_PRO.aprx - nhill - 28/Mar/2024



LEGEND

- Delineated Wetland (CBCL 2023)
- Field Verified Wetland (CBCL 2023)
- Provincial Wetland
- Waterbody (Provincial)

Project Components

- Turbine Location
- Potential Development Area
- Laydown Area
- Operations & Maintenance Building
- Substation Location



**WINDY RIDGE
WIND POWER PROJECT**

**Wetland Delineation
Survey Results:
Page 7 of 43**

DATE: 2024-03-28	PROJ N°: 231207	FIGURE: 9.3
DRAWN BY: NH	CHECKED BY: LR	APPROVED: LH

NOTES:

0 90 180 360 m

SCALE: 1:7,100 Coordinate System: NAD 1983 (CSRS) v6 UTM Zone 20N
Units: Meter