

LEGEND

- Delineated Wetland (CBCL 2023)
- Field Verified Wetland (CBCL 2023)
- Provincial Wetland
- Waterbody (Provincial)

Project Components

- Turbine Location
- Potential Development Area
- Laydown Area
- Operations & Maintenance Building
- Substation Location



**WINDY RIDGE
WIND POWER PROJECT**

**Wetland Delineation
Survey Results:
Page 22 of 43**

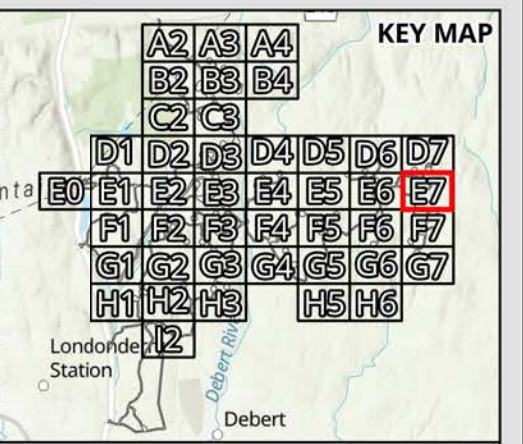
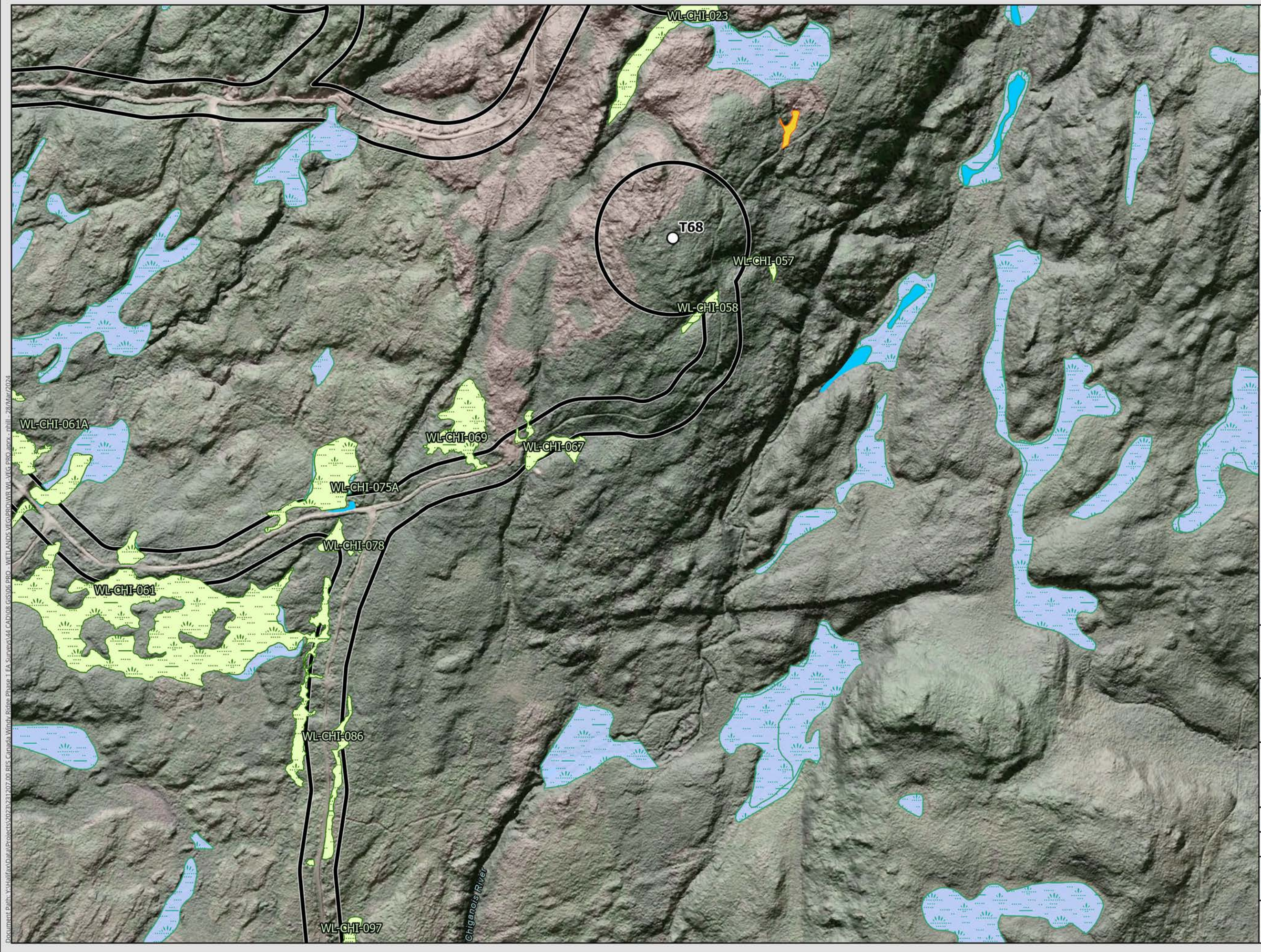
DATE: 2024-03-28	PROJ N°: 231207	FIGURE: 9.3
DRAWN BY: NH	CHECKED BY: LR	APPROVED: LH

NOTES:

0 90 180 360 m

SCALE: 1:7,100 Coordinate System: NAD 1983 (CSRS) v6 UTM Zone 20N
Units: Meter

Document Path: \\Halifax\Data\Projects\2023\231207\00_BEC_Canada_WindyRidge_Phase1_EA_Survey\44_CAD\08_GIS\06_PRO - WETLANDS_VEG\PRO\WR_WL_VEG_PRO.aprx - nhll - 28/Mar/2024



LEGEND

- Delineated Wetland (CBCL 2023)
- Field Verified Wetland (CBCL 2023)
- Provincial Wetland
- Waterbody (Provincial)

Project Components

- Turbine Location
- Potential Development Area
- Laydown Area
- Operations & Maintenance Building
- Substation Location



**WINDY RIDGE
WIND POWER PROJECT**

**Wetland Delineation
Survey Results:
Page 23 of 43**

DATE: 2024-03-28	PROJ N°: 231207	FIGURE: 9.3
DRAWN BY: NH	CHECKED BY: LR	APPROVED: LH

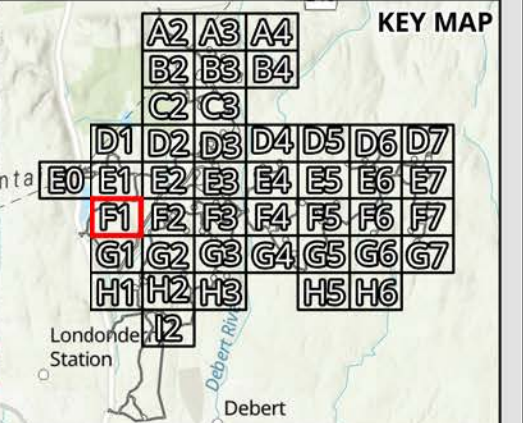
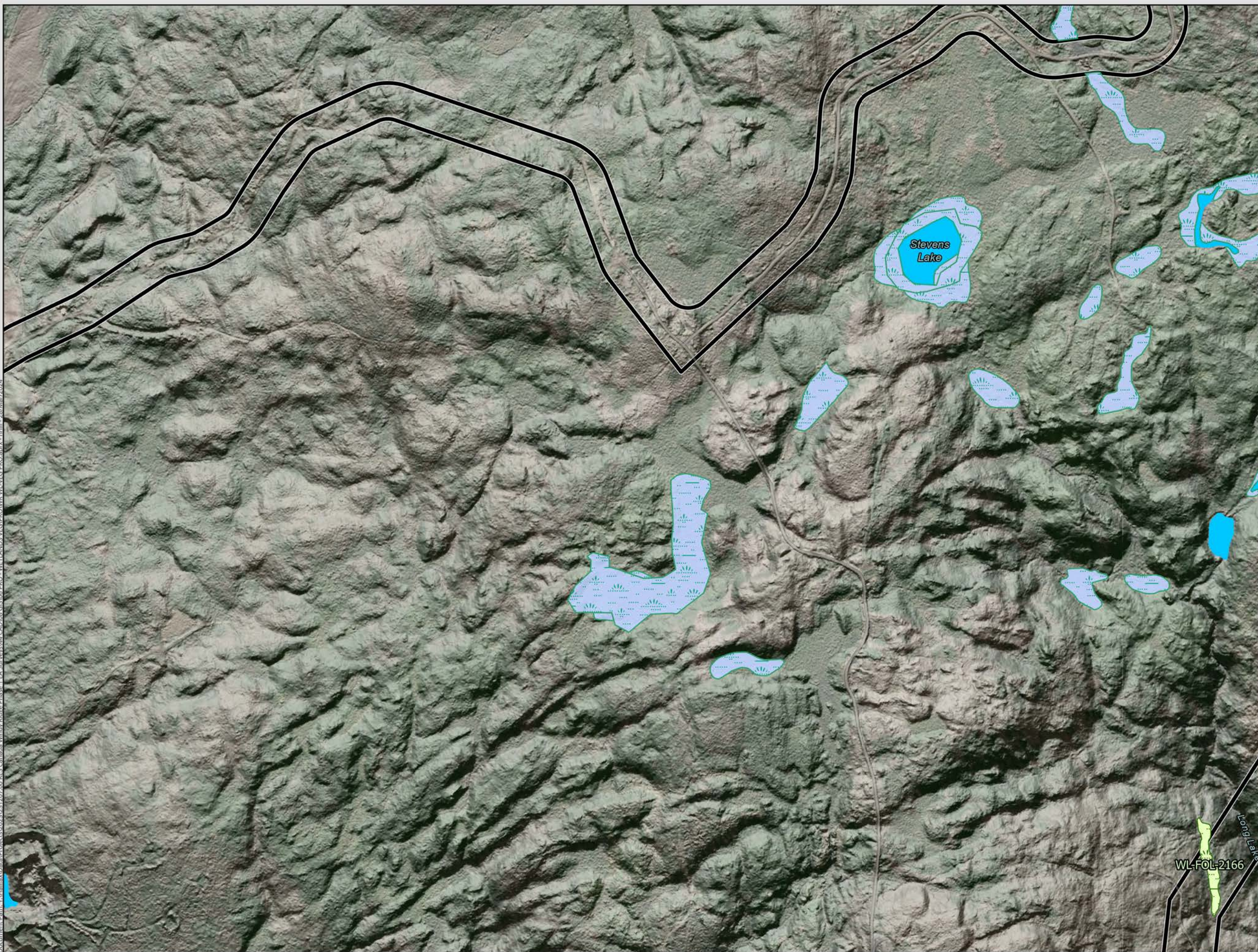
NOTES:

0 90 180 360 m

SCALE: 1:7,100 Coordinate System: NAD 1983 (CSRS) v6 UTM Zone 20N Units: Meter

Document Path: \\H:\Data\Projects\2023\231207\00 REC Canada Windy Ridge Phase 1 EA Survey\44 CAD\08 GIS\06 PRO - WETLANDS VEG\PRO\WR WL-VEG-PRO.aprx - nhill - 28/Mar/2024

Document Path: \\Halifax\Data\Projects\2023\231207\00_BEC_Canada_Windy Ridge Phase 1 EA_Survey\44_CAD\08_GIS\06_PRO-WETLANDS_VEG\PROWR_WL_VEG_PRO.aprx - nhill - 28/Mar/2024



LEGEND

- Delineated Wetland (CBCL 2023)
- Field Verified Wetland (CBCL 2023)
- Provincial Wetland
- Waterbody (Provincial)

Project Components

- Turbine Location
- Potential Development Area
- Laydown Area
- Operations & Maintenance Building
- Substation Location



WINDY RIDGE
WIND POWER PROJECT

**Wetland Delineation
Survey Results:
Page 24 of 43**

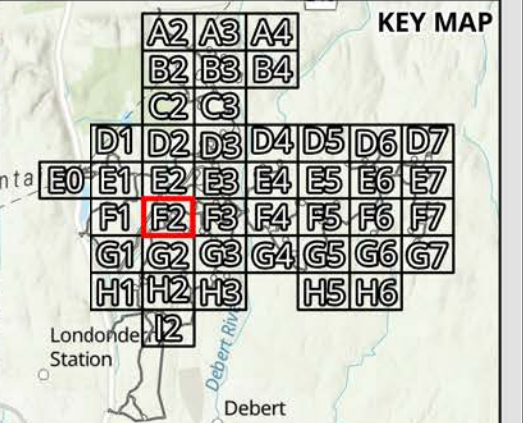
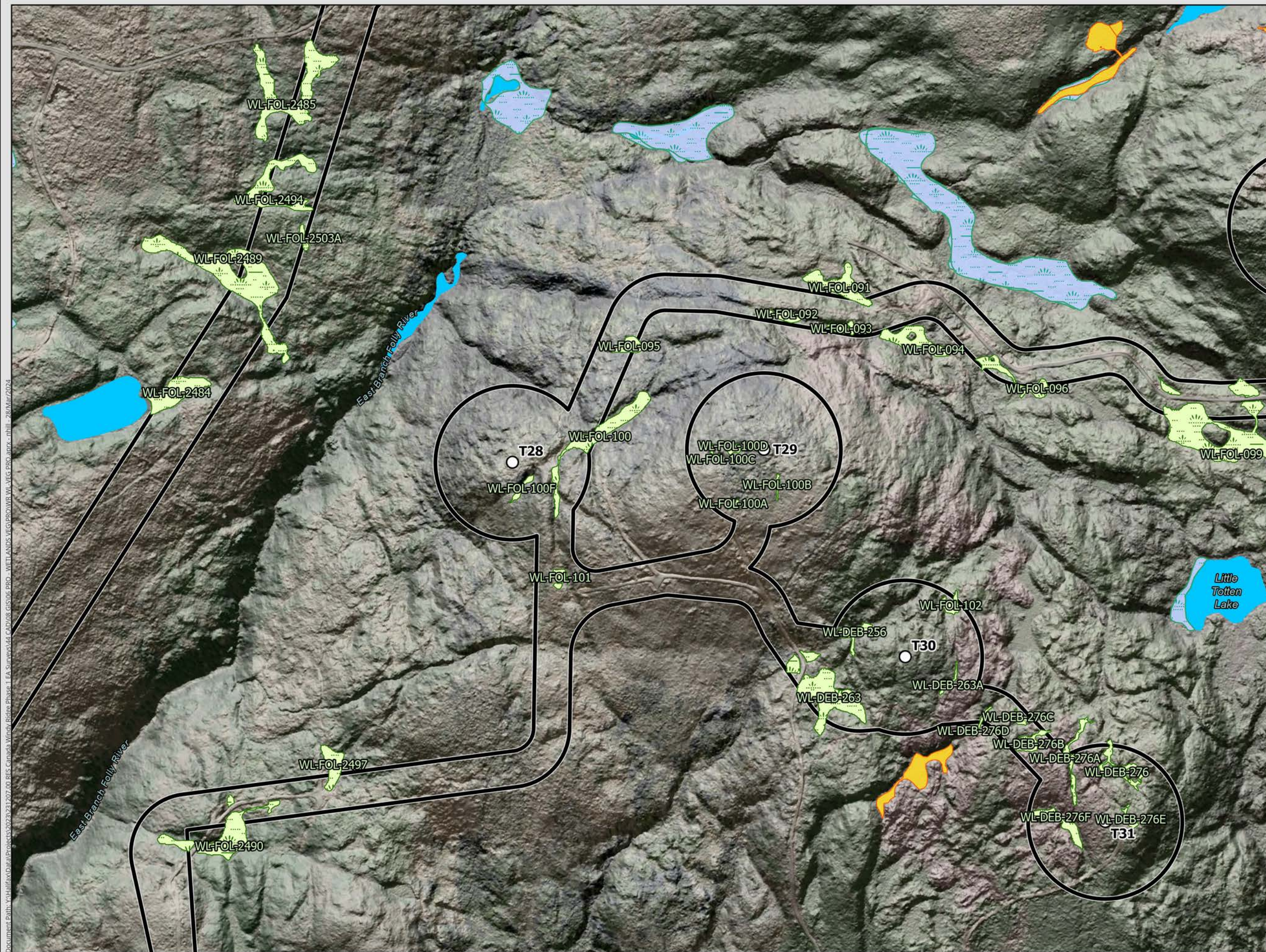
DATE: 2024-03-28	PROJ N°: 231207	FIGURE: 9.3
DRAWN BY: NH	CHECKED BY: LR	APPROVED: LH

NOTES:

0 90 180 360 m

SCALE: 1:7,100 Coordinate System: NAD 1983 (CSRS) v6 UTM Zone 20N
Units: Meter

Windy Ridge
WL-FOL-2166



- LEGEND**
- Delineated Wetland (CBCL 2023)
 - Field Verified Wetland (CBCL 2023)
 - Provincial Wetland
 - Waterbody (Provincial)
- Project Components**
- Turbine Location
 - Potential Development Area
 - Laydown Area
 - Operations & Maintenance Building
 - Substation Location



**WINDY RIDGE
WIND POWER PROJECT**

**Wetland Delineation
Survey Results:
Page 25 of 43**

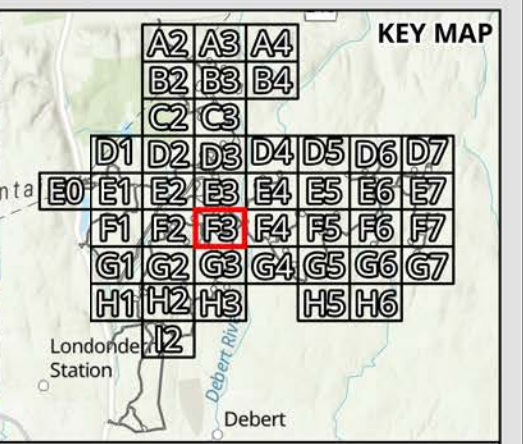
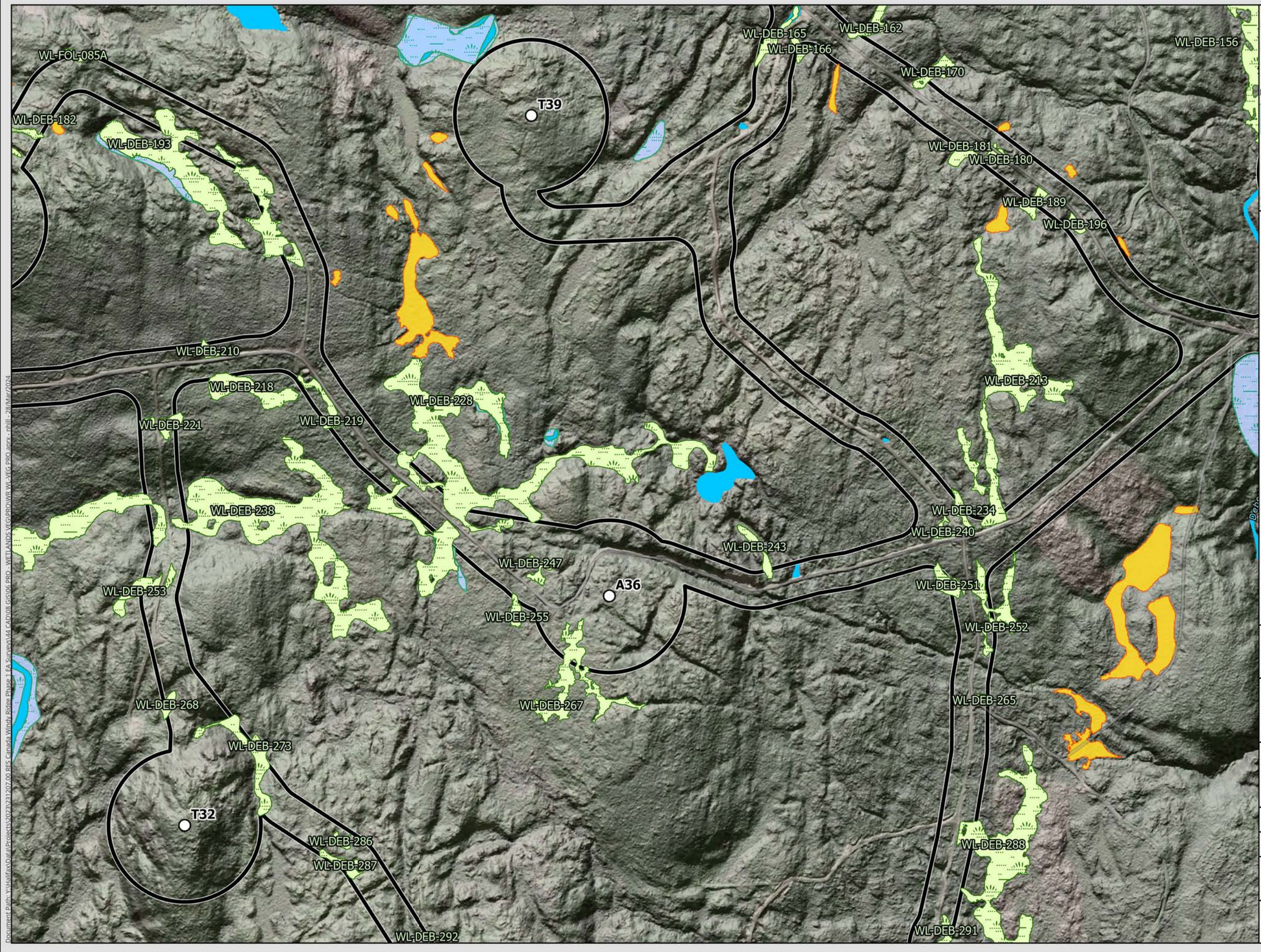
DATE: 2024-03-28	PROJ N°: 231207	FIGURE: 9.3
DRAWN BY: NH	CHECKED BY: LR	APPROVED: LH

NOTES:

0 90 180 360 m

SCALE: 1:7,100 Coordinate System: NAD 1983 (CSRS) v6 UTM Zone 20N Units: Meter

Document Path: \\H:\Hullfax\Paral\Projects\2023\231207\00 BEC Canada Windy Ridge Phase 1 EA\Surveys\44 CAD\08 GIS\06 PRO - WETLANDS VEG\PRO\WR WL-VEG-PRO.aprx - nhill - 28/Mar/2024



LEGEND

- Delineated Wetland (CBCL 2023)
- Field Verified Wetland (CBCL 2023)
- Provincial Wetland
- Waterbody (Provincial)

Project Components

- Turbine Location
- Potential Development Area
- Laydown Area
- Operations & Maintenance Building
- Substation Location



**WINDY RIDGE
WIND POWER PROJECT**

**Wetland Delineation
Survey Results:
Page 26 of 43**

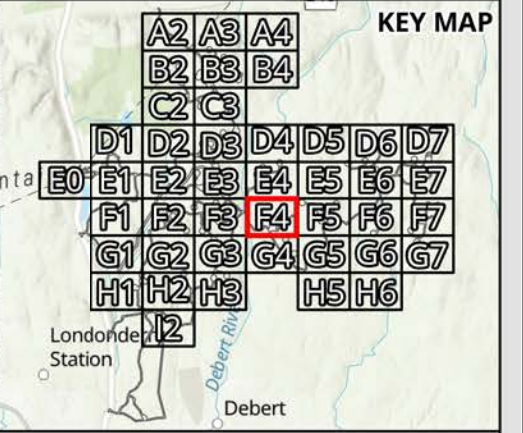
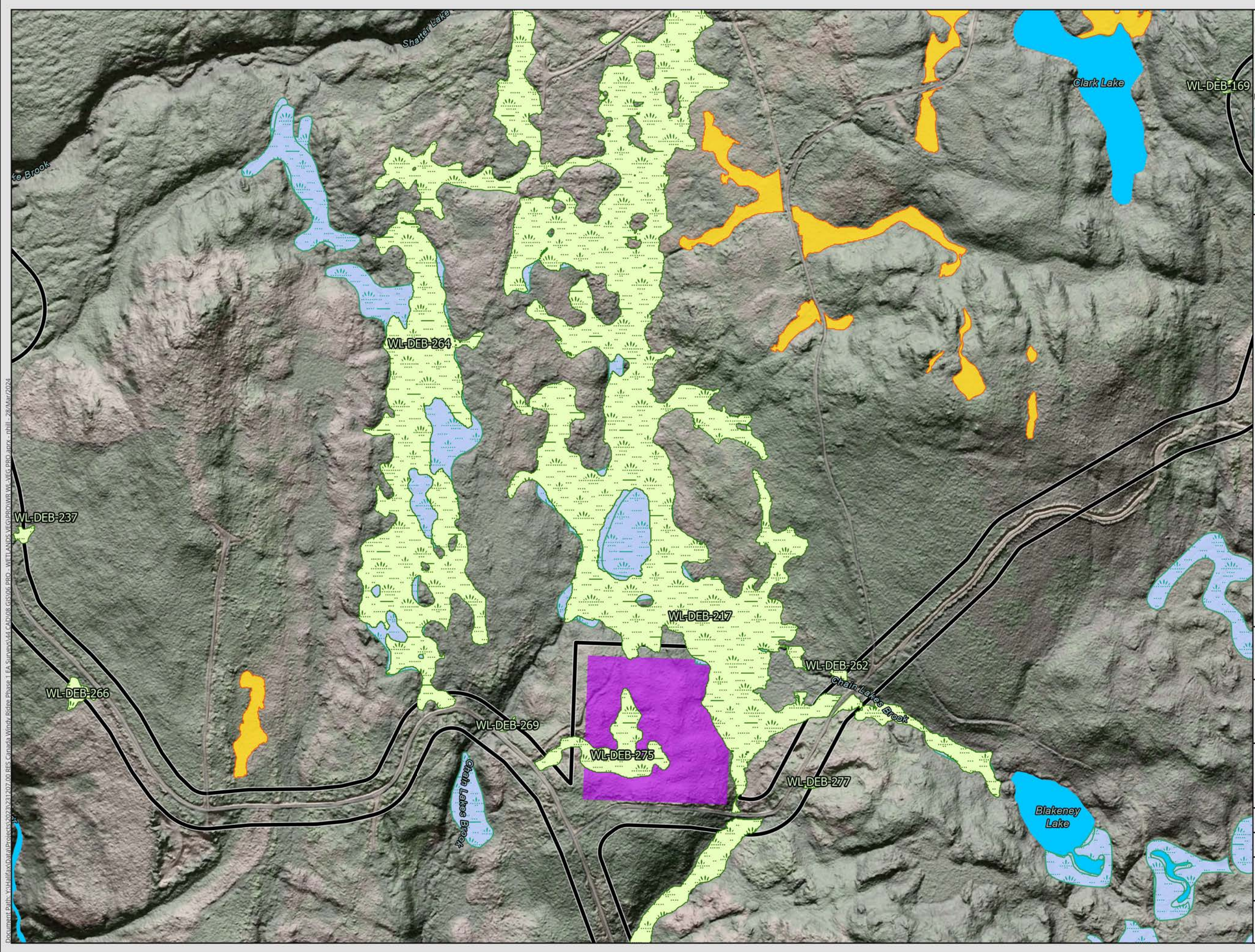
DATE: 2024-03-28	PROJ N°: 231207	FIGURE: 9.3
DRAWN BY: NH	CHECKED BY: LR	APPROVED: LH

NOTES:

0 90 180 360 m

SCALE: 1:7,100 Coordinate System: NAD 1983 (CSRS) v6 UTM Zone 20N Units: Meter

Document Path: Y:\Halifax\Data\Projects\2023\231207\00_BEC_Canada_Windy_Ridge_Phase 1_EA_Survey\44_CAD\08_GIS\06_PRO - WETLANDS_VEG\PRO\WR_WL_VEG_PRO.aprx - nhill - 28/Mar/2024



- LEGEND**
- Delineated Wetland (CBCL 2023)
 - Field Verified Wetland (CBCL 2023)
 - Provincial Wetland
 - Waterbody (Provincial)
- Project Components**
- Turbine Location
 - Potential Development Area
 - Laydown Area
 - Operations & Maintenance Building
 - Substation Location



**WINDY RIDGE
WIND POWER PROJECT**

**Wetland Delineation
Survey Results:
Page 27 of 43**

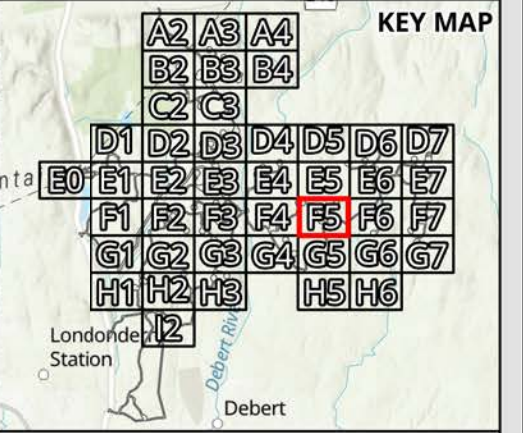
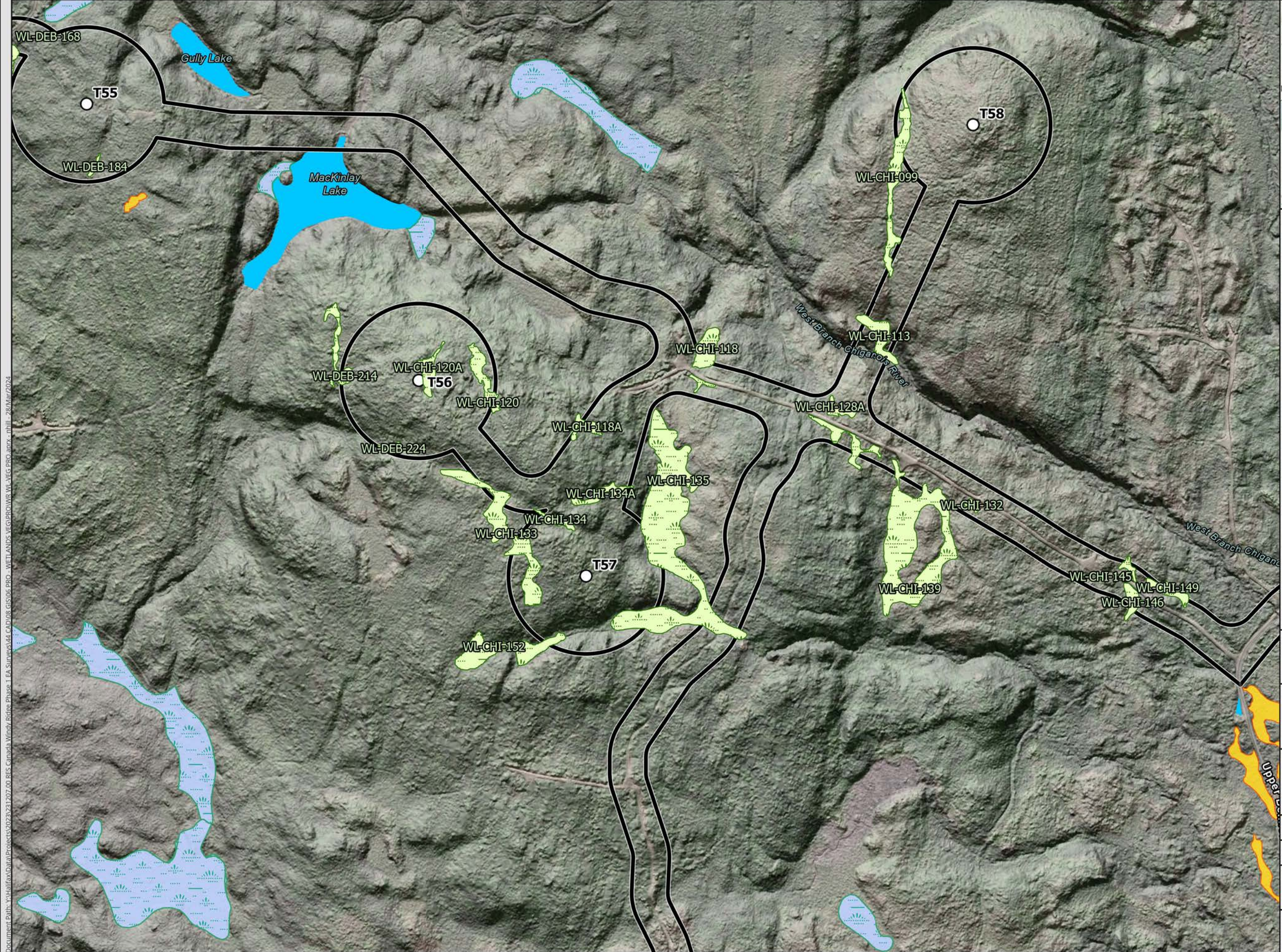
DATE: 2024-03-28	PROJ N°: 231207	FIGURE: 9.3
DRAWN BY: NH	CHECKED BY: LR	APPROVED: LH

NOTES:

0 90 180 360 m

SCALE: 1:7,100 Coordinate System: NAD 1983 (CSRS) v6 UTM Zone 20N Units: Meter

Document Path: \\HalifaxData\Projects\2023\231207\00_BEC_Canada_Windy Ridge Phase 1 EA_Survey\44_CAD\08_GIS\06_PRO - WETLANDS_VEG\PROWR_WL_VEG_PRO.aprx - nhill - 28/Mar/2024



LEGEND

- Delineated Wetland (CBCL 2023)
- Field Verified Wetland (CBCL 2023)
- Provincial Wetland
- Waterbody (Provincial)

Project Components

- Turbine Location
- Potential Development Area
- Laydown Area
- Operations & Maintenance Building
- Substation Location



**WINDY RIDGE
WIND POWER PROJECT**

**Wetland Delineation
Survey Results:
Page 28 of 43**

DATE: 2024-03-28 PROJ N°: 231207 FIGURE: **9.3**

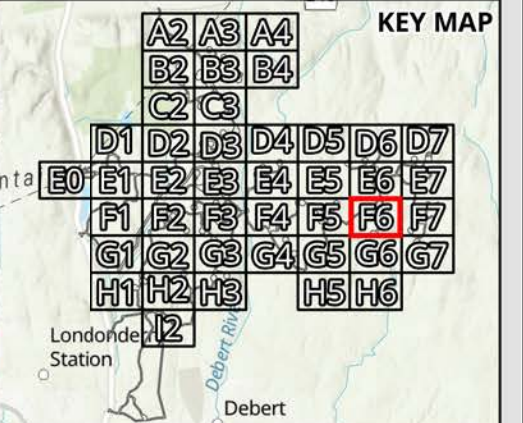
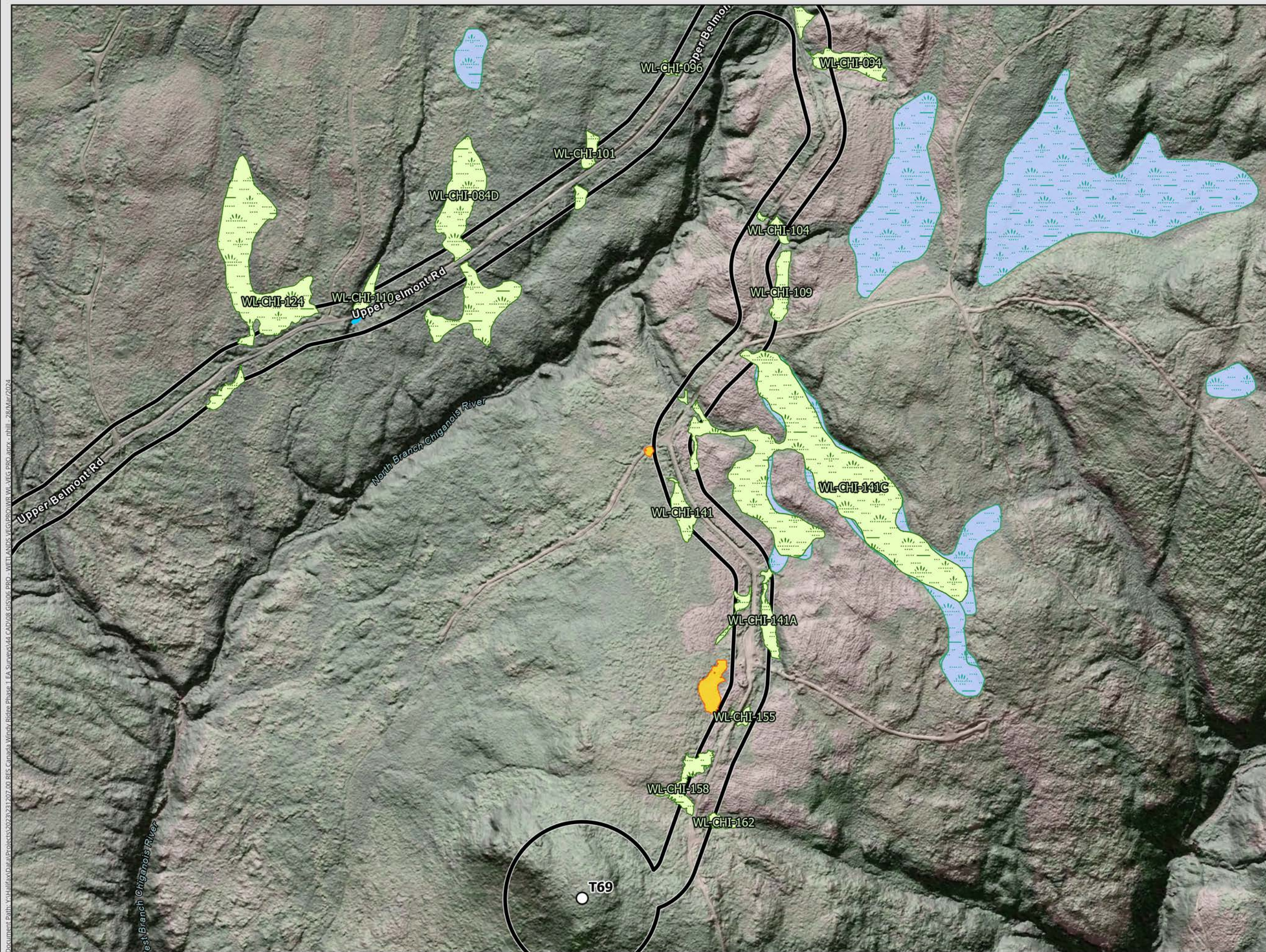
DRAWN BY: NH CHECKED BY: LR APPROVED: LH

NOTES:

0 90 180 360 m

SCALE: 1:7,100 Coordinate System: NAD 1983 (CSRS) v6 UTM Zone 20N
Units: Meter

Document Path: \\H:\Data\Projects\2023\231207\00_BEC_Canada_Windy Ridge Phase 1 EA_Survey\44_CAD\08_GIS\06_PRO - WETLANDS_VEG\PRO\WR_WL_VEG_PRO.aprx - nhill - 28/Mar/2024



- LEGEND**
- Delineated Wetland (CBCL 2023)
 - Field Verified Wetland (CBCL 2023)
 - Provincial Wetland
 - Waterbody (Provincial)
- Project Components**
- Turbine Location
 - Potential Development Area
 - Laydown Area
 - Operations & Maintenance Building
 - Substation Location



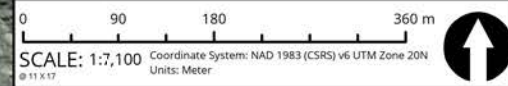
**WINDY RIDGE
WIND POWER PROJECT**

**Wetland Delineation
Survey Results:
Page 29 of 43**

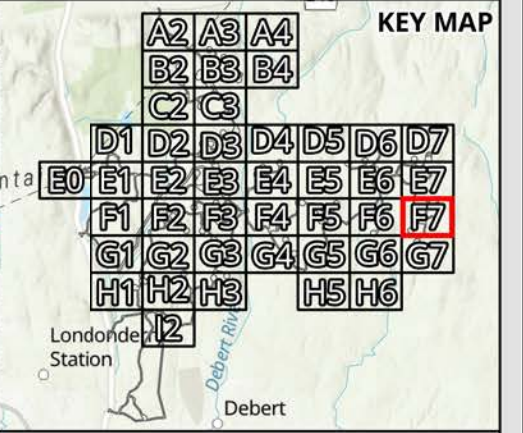
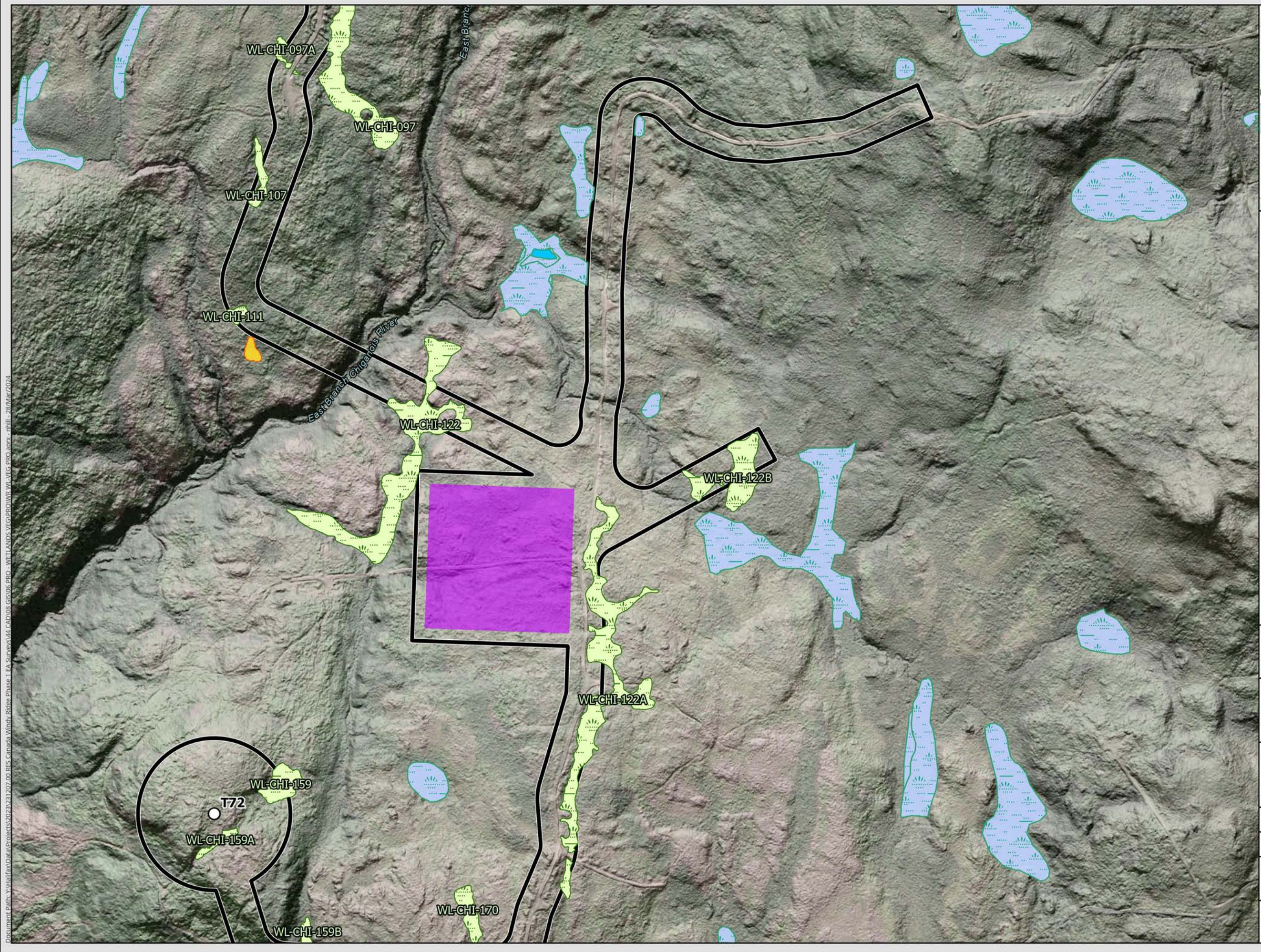
DATE: 2024-03-28 PROJ N°: 231207 FIGURE: **9.3**

DRAWN BY: NH CHECKED BY: LR APPROVED: LH

NOTES:



Document Path: \\h:\data\Projects\2023\231207\00\BEC_Canada\Windy Ridge\Phase 1 EA\Surveys\44 CAD\08 GIS\06 PRO - WETLANDS\VEG\PRO\WR WL-VEG-PRO.aprx - nhill - 28/Mar/2024



- LEGEND**
- Delineated Wetland (CBCL 2023)
 - Field Verified Wetland (CBCL 2023)
 - Provincial Wetland
 - Waterbody (Provincial)
- Project Components**
- Turbine Location
 - Potential Development Area
 - Laydown Area
 - Operations & Maintenance Building
 - Substation Location



**WINDY RIDGE
WIND POWER PROJECT**

**Wetland Delineation
Survey Results:
Page 30 of 43**

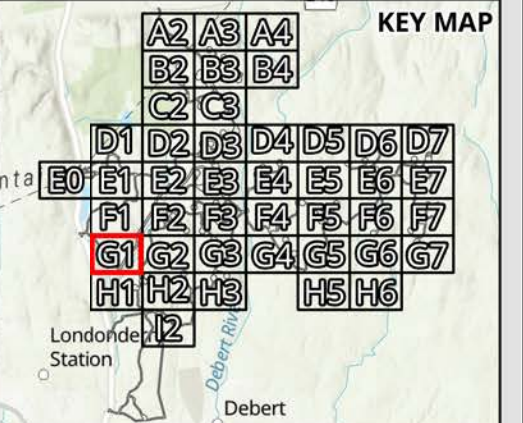
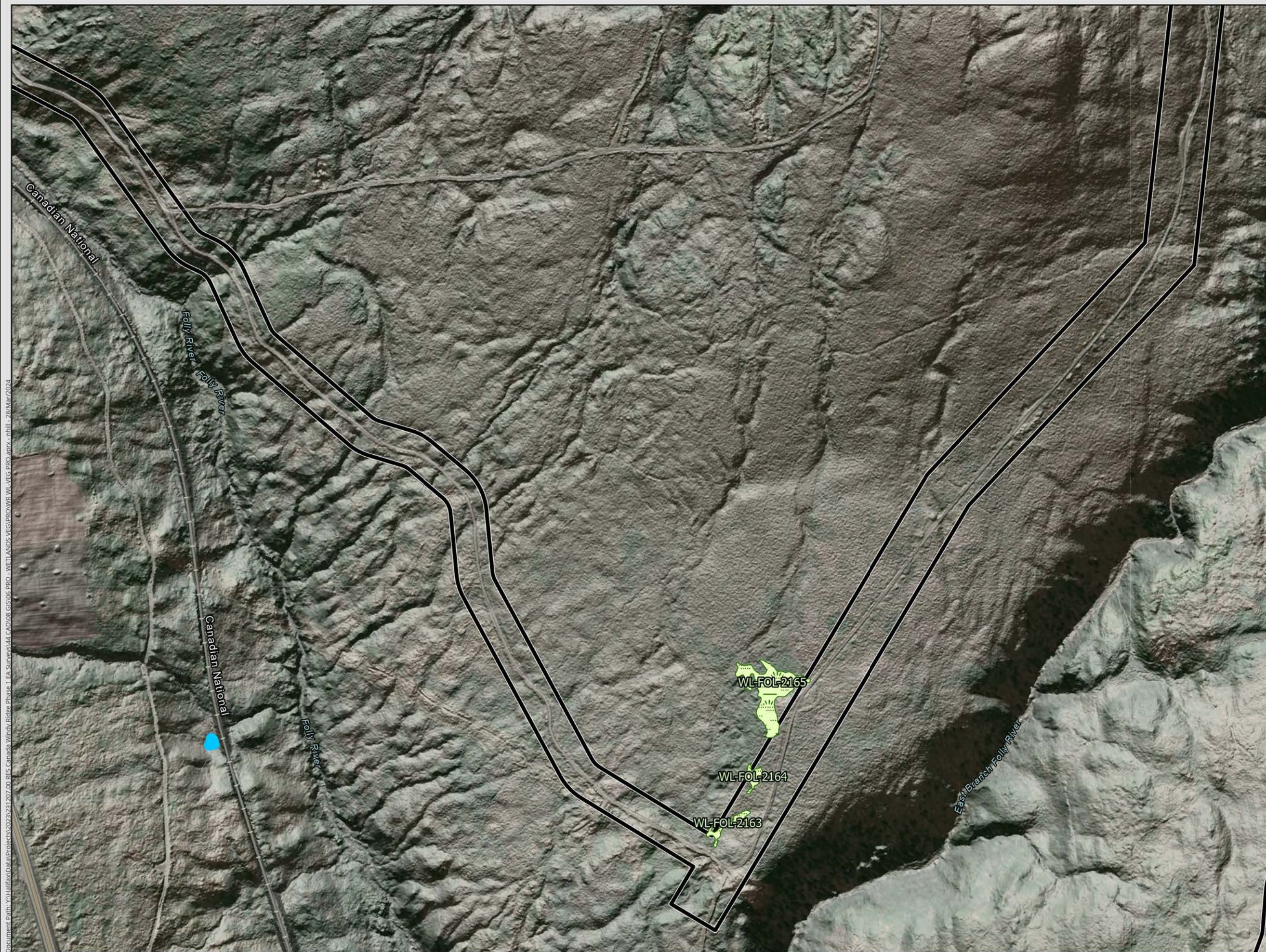
DATE: 2024-03-28	PROJ N°: 231207	FIGURE: 9.3
DRAWN BY: NH	CHECKED BY: LR	APPROVED: LH

NOTES:

0 90 180 360 m

SCALE: 1:7,100 Coordinate System: NAD 1983 (CSRS) v6 UTM Zone 20N Units: Meter

Document Path: \\H:\Data\Projects\2023\231207\00_BES_Canada_Windy Ridge Phase 1 EA_Survey\44_CAD\08_GIS\06_PRO - WETLANDS VEG\PROWR WL_VEG_PRO.aprx - nhill - 28/Mar/2024



- LEGEND**
- Delineated Wetland (CBCL 2023)
 - Field Verified Wetland (CBCL 2023)
 - Provincial Wetland
 - Waterbody (Provincial)
- Project Components**
- Turbine Location
 - Potential Development Area
 - Laydown Area
 - Operations & Maintenance Building
 - Substation Location



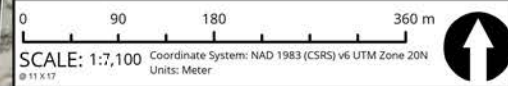
**WINDY RIDGE
WIND POWER PROJECT**

**Wetland Delineation
Survey Results:
Page 31 of 43**

DATE: 2024-03-28 PROJ N°: 231207 FIGURE: **9.3**

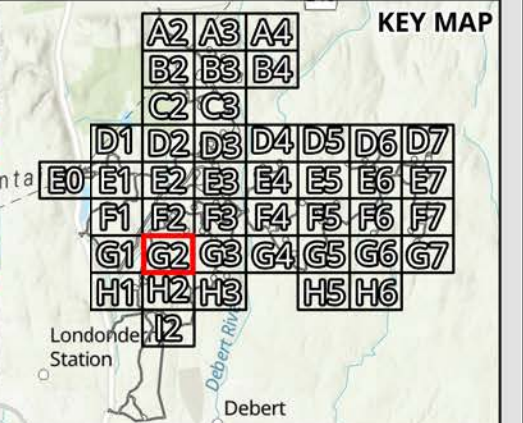
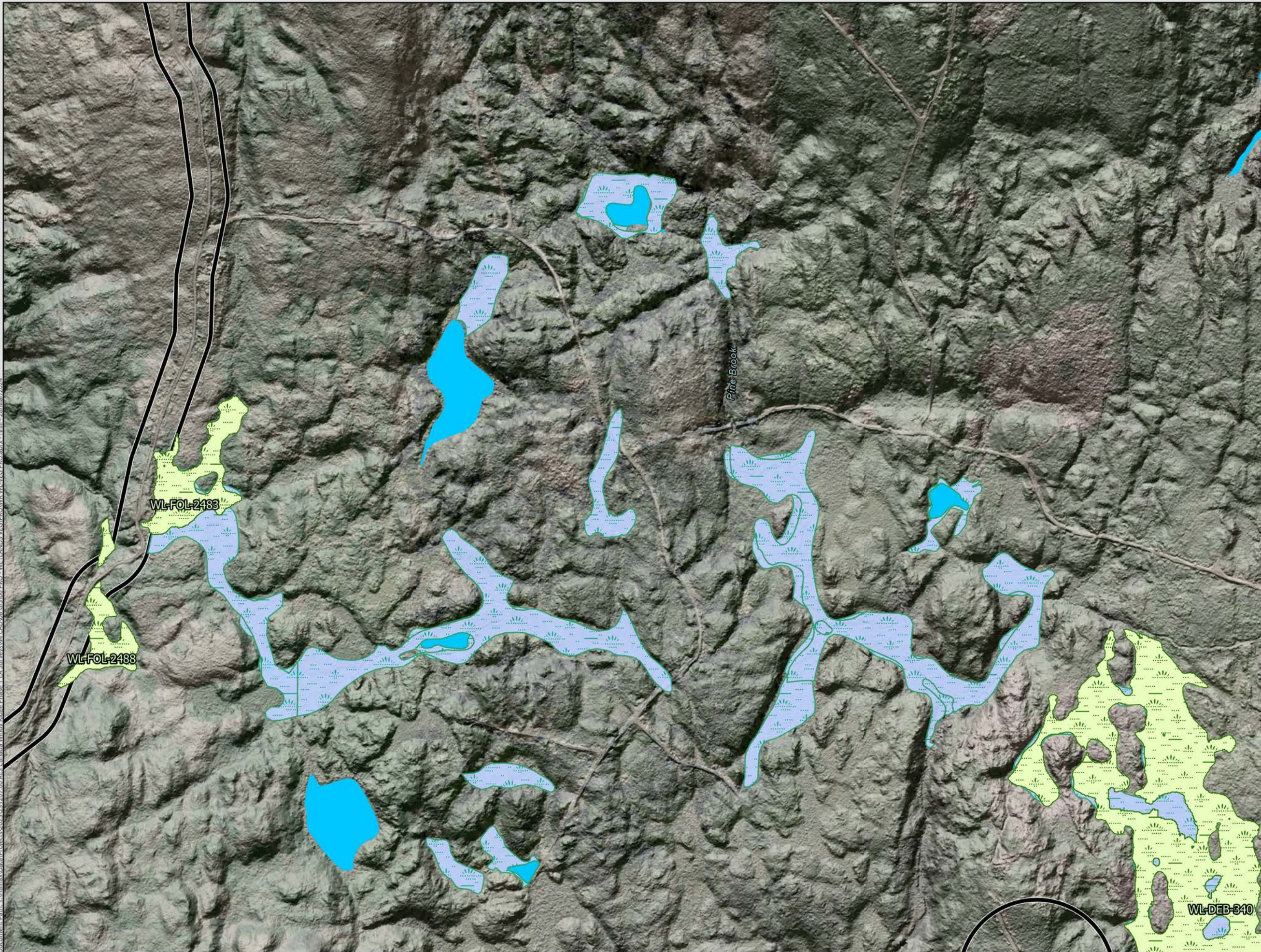
DRAWN BY: NH CHECKED BY: LR APPROVED: LH

NOTES:



Document Path: \\Y:\Halifax\Data\Projects\2023\231207\00_BEC_Canada_Windy Ridge Phase 1 EA_Survey\44_CAD\08_GIS\06_PRO - WETLANDS_VEG\PROWR WL_VEG_PRO.aprx - nhill - 28/Mar/2024

Document Path: Y:\Halifax\Digital\Projects\2023\231207\00 BEC Canada Windy Ridge Phase 1 EA_Survey\44 CAD\08 GIS\06 PRO - WETLANDS VEG\PROV W1_VEG_PRO.aprx - nhill - 28/Mar/2024



- LEGEND**
- Delineated Wetland (CBCL 2023)
 - Field Verified Wetland (CBCL 2023)
 - Provincial Wetland
 - Waterbody (Provincial)
- Project Components**
- Turbine Location
 - Potential Development Area
 - Laydown Area
 - Operations & Maintenance Building
 - Substation Location



**WINDY RIDGE
WIND POWER PROJECT**

**Wetland Delineation
Survey Results:
Page 32 of 43**

DATE: 2024-03-28	PROJ N°: 231207	FIGURE: 9.3
DRAWN BY: NH	CHECKED BY: LR	APPROVED: LH

NOTES:

0 90 180 360 m

SCALE: 1:7,100 Coordinate System: NAD 1983 (CSRS) v6 UTM Zone 20N Units: Meter