

- LEGEND**
- Acoustic Recording Unit (ARU) Location
 - Turbine Location
 - Potential Development Area
- Nova Scotia Topographic Database (2023)*
- Addressed Road (NSTD, 2023)
 - Trail / Resource Road / No Maintenance
 - Watercourse
 - Waterbody
 - Wetland



**WINDY RIDGE
WIND POWER PROJECT**

Bat Surveys

DATE: 2024-04-04	PROP N°: 231207	FIGURE: 11.1
DRAWN BY: SF	CHECKED BY: NM	APPROVED: LH

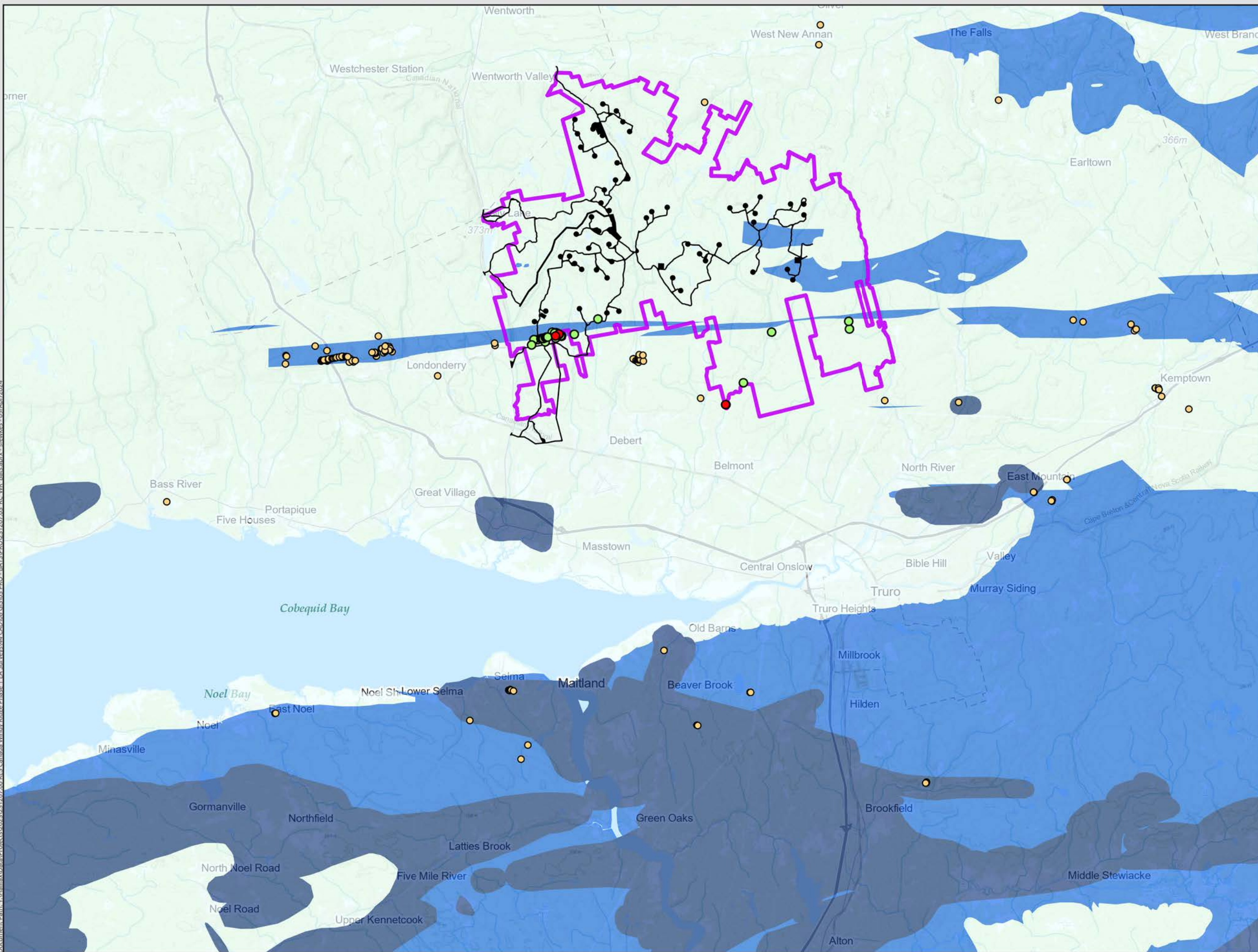
NOTES:

0 1,000 2,000 4,000 m

SCALE: 1:88,000 Coordinate System: NAD 1983 UTM Zone 20N
Units: Meter

Document Path: \\HalifaxData\Projects\2023\231207\00 BEC Canada Windy Ridge Phase 1 EA\Surveys\44 CAD\08 GIS\03 PRO - BATS\PROJ\231207\03 BC WR Bats.aprx - sfenkes - 04/Apr/2024

Document Path: Y:\Halifax\Aerial\Projects\2023\231207\00\BES_Canada_Windy Ridge Phase 1 EA_Survey\44 CAD\08 GIS\03 PRO - BATS\PRO\231207\03 BC WR_Bats_appx - sfenwkes_09/Apr/2024



LEGEND

Abandoned Mine Openings (AMO)
Within Project Boundary

- AMO With Existing Depth
- AMO Without Existing Depth

○ AMO Outside of Project Boundaries

Karst Risk (NSTD, 2023)

- High Risk
- Medium Risk
- Low Risk

■ Potential Development Area

■ Initial Constraints Identification Area



WINDY RIDGE WIND POWER PROJECT

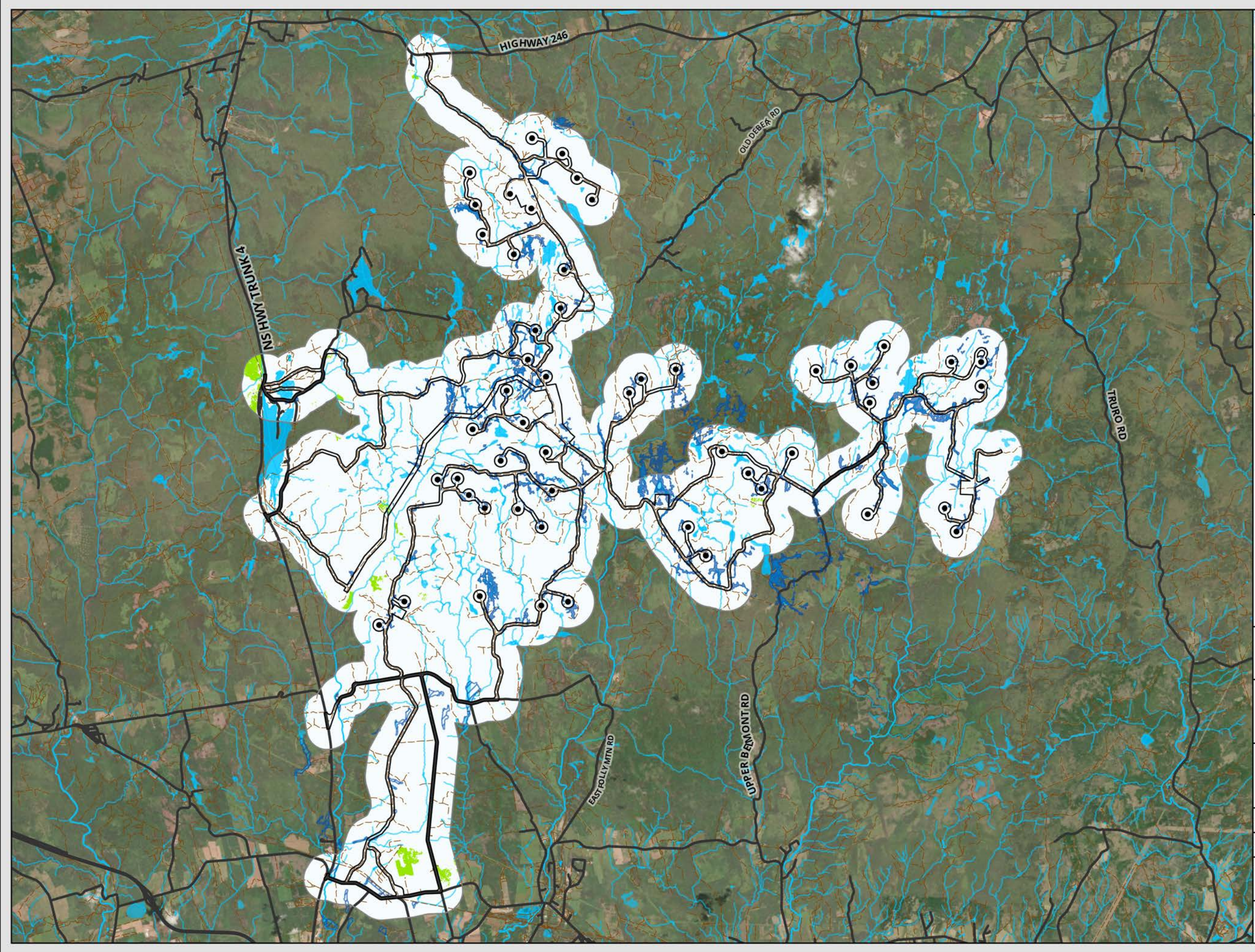
Significant Bat Features

DATE: 2024-04-09	PROP N°: 231207	FIGURE: 11.2
DRAWN BY: SF	CHECKED BY: NM	APPROVED: LH

NOTES:

0 2,500 5,000 10,000 m

SCALE: 1:200,000 Coordinate System: NAD 1983 UTM Zone 20N
 Units: Meter



- LEGEND**
- Local Assessment Area for Bats
 - Potential Development Area
 - Turbine Location
 - Wetlands (Delineated - CBCL, 2023)
- Possible Suitable Habitat**
- Not Suitable
 - Suitable
- Nova Scotia Topographic Database (2023)**
- Addressed Roads
 - Trail / Resource Road / No Maintenance
 - Wetlands
 - Waterbody
 - Watercourse



**WINDY RIDGE
WIND POWER PROJECT**

**Possible Suitable
Maternity Roosting
Habitat for Myotis**

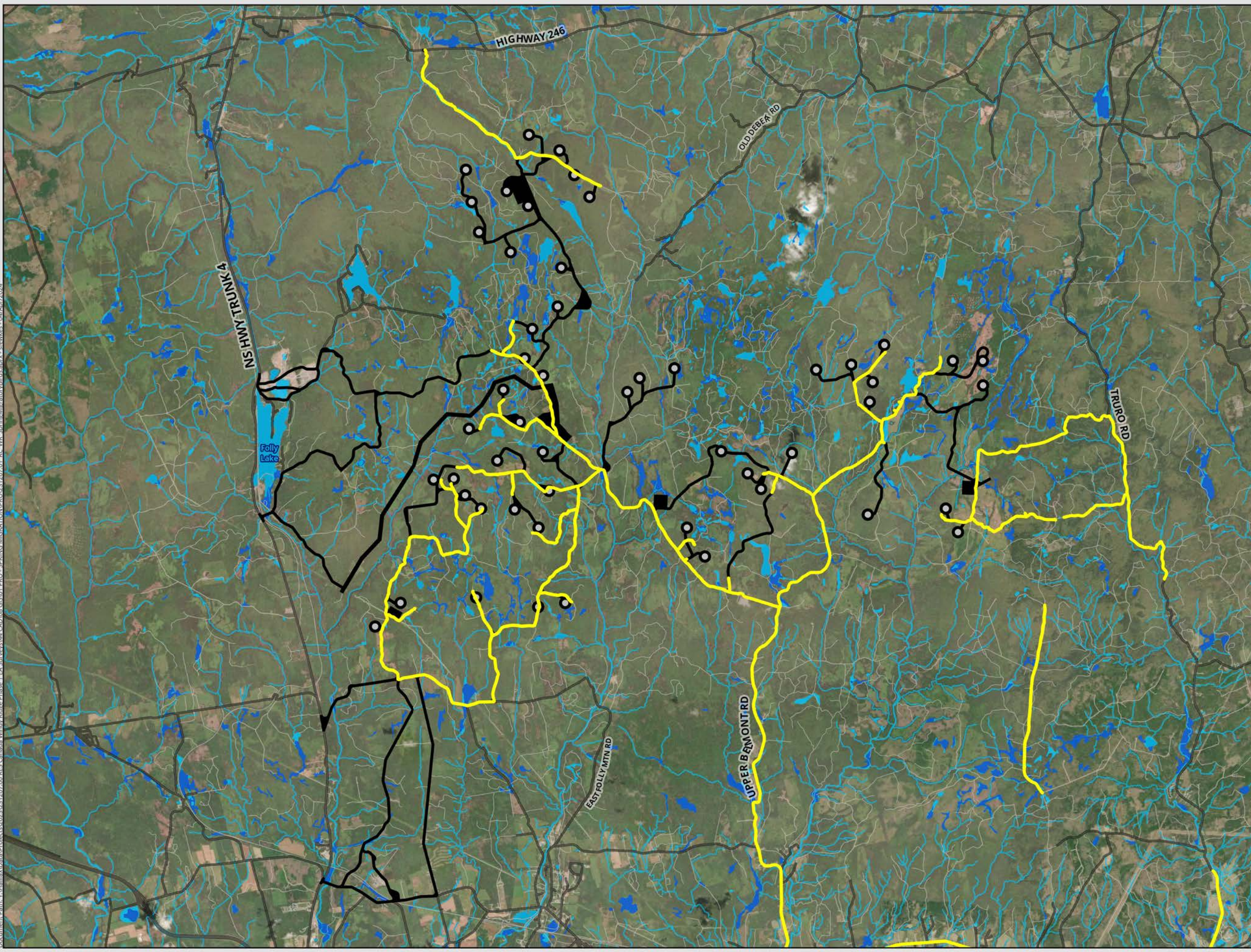
DATE: 2024-05-28	PROP N°: 231207	FIGURE: 11.3
DRAWN BY: MC	CHECKED BY: NM	APPROVED: LH

NOTES:

0 1,000 2,000 4,000 m

SCALE: 1:88,000 Coordinate System: NAD 1983 UTM Zone 20
Units: Meter

Document Path: \\HalifaxData\Projects\2023\231207\00 BEC Canada Windy Ridge Phase 1 EA\Surveys\44 CAD\08 GIS\01 PRO - SPRINGS MIGRATION\PROJ\231207\01 BC WR SpringMigration\Birds.aprx - slevkes - 04/Apr/2024



- LEGEND**
- Winter Birds Surveyed Areas
 - Potential Development Area
 - Turbine Location
- Nova Scotia Topographic Database (2023)
- Addressed Road
 - Roads & Trails
 - Watercourse
 - Waterbody
 - Wetland



WINDY RIDGE WIND POWER PROJECT

Winter Bird Surveys

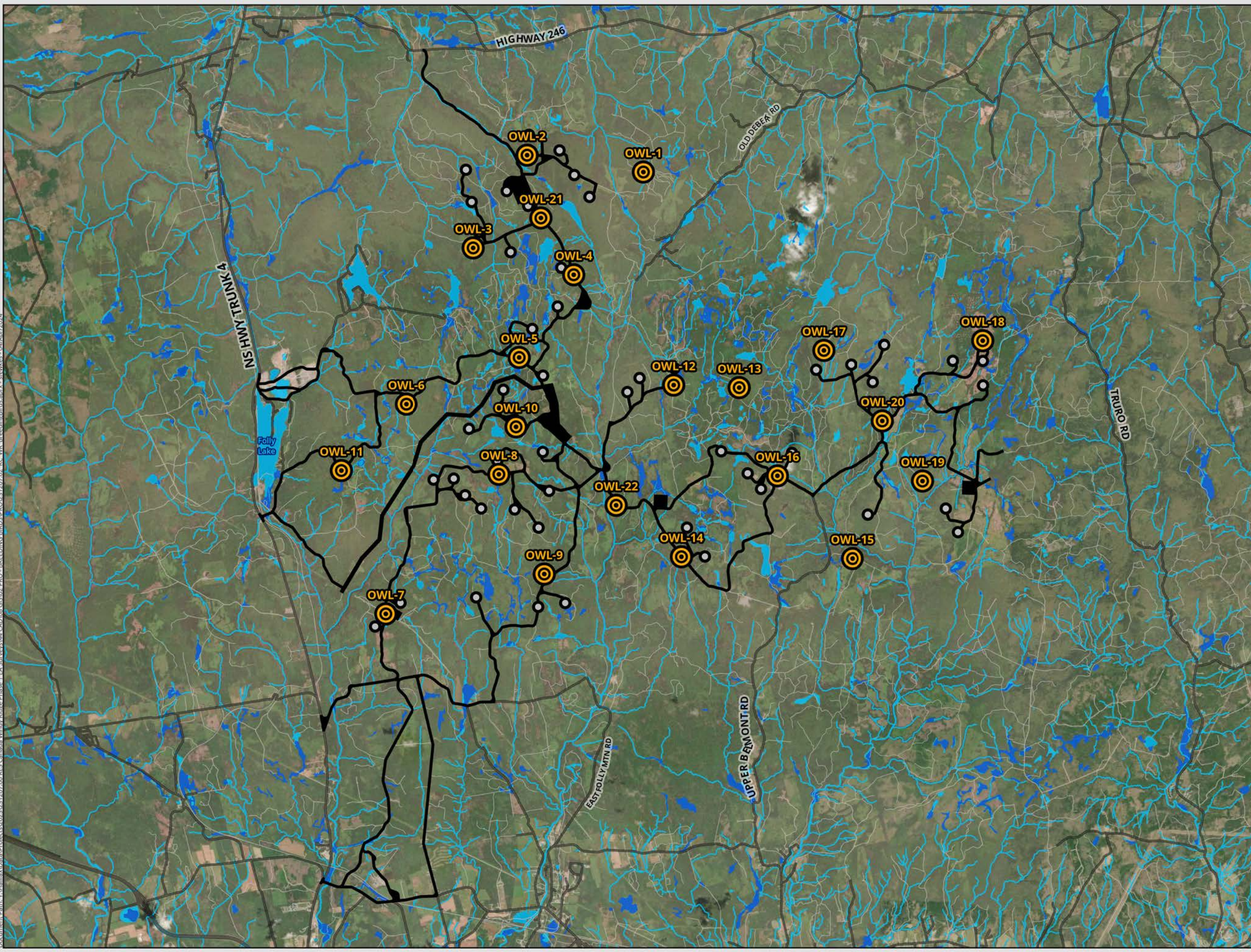
DATE: 2024-04-04	PROP N°: 231207	FIGURE: 12.1
DRAWN BY: SF	CHECKED BY: NM	APPROVED: LH

NOTES:

0 1,000 2,000 4,000 m

SCALE: 1:88,000 Coordinate System: NAD 1983 UTM Zone 20N
Units: Meter

Document Path: \\HalifaxData\Projects\2023\231207\00 BEC Canada Windy Ridge Phase 1 EA\Surveys\44 CAD\08 GIS\02 PRO - BREEDING BIRDS\PROV231207\02 BC_WR_BreedingBirds.mxd - sfwakes - 04/Apr/2024



LEGEND

- Nocturnal Owl Survey Location (22)
- Potential Development Area
- Turbine Location

Nova Scotia Topographic Database (2023)

- Addressed Road
- Roads & Trails
- Watercourse
- Waterbody
- Wetland



WINDY RIDGE WIND POWER PROJECT

Nocturnal Owl Surveys

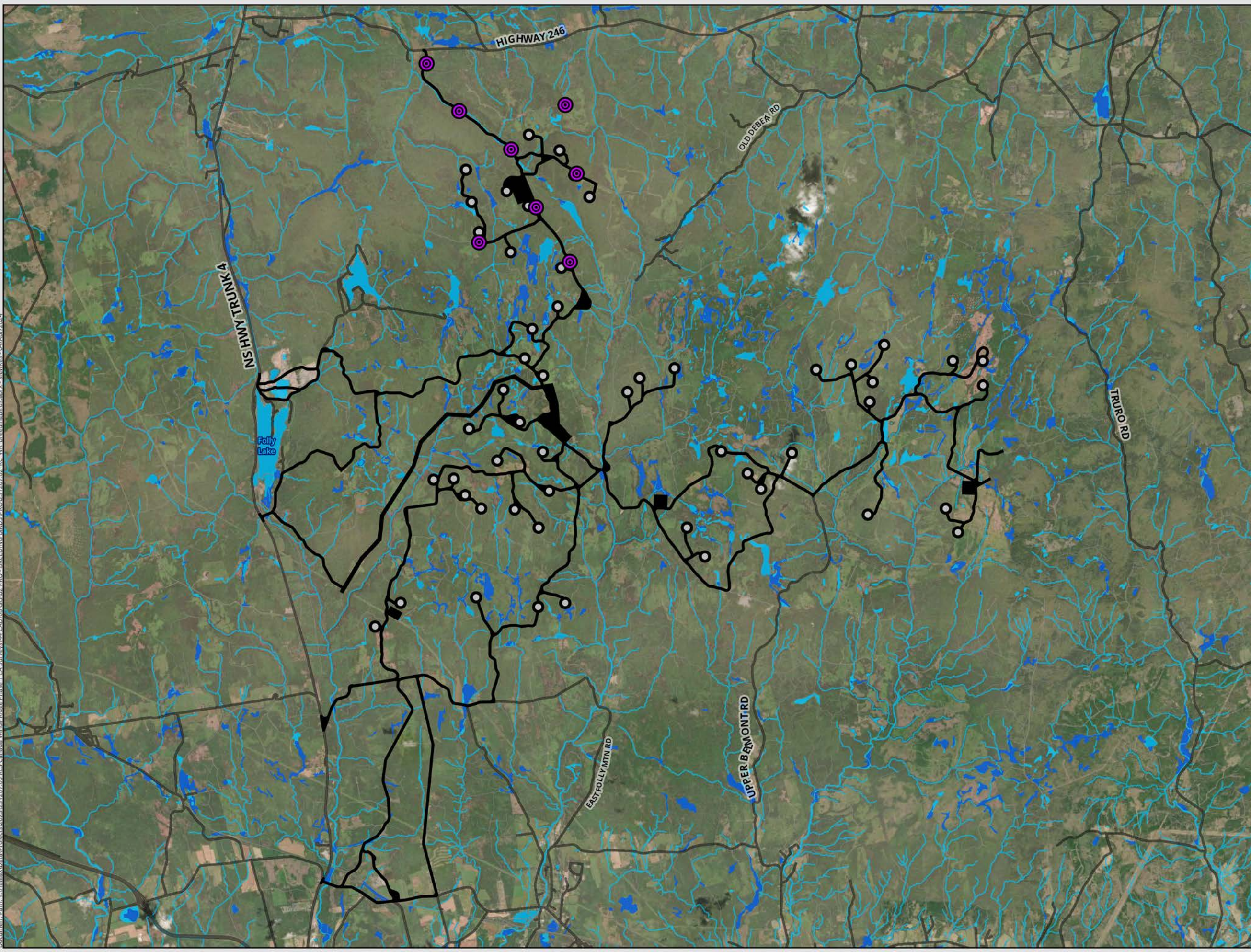
DATE: 2024-04-04	PROP N°: 231207	FIGURE: 12.2
DRAWN BY: SF	CHECKED BY: NM	APPROVED: LH

NOTES:

0 1,000 2,000 4,000 m

SCALE: 1:88,000 Coordinate System: NAD 1983 UTM Zone 20N Units: Meter

Document Path: \\HalifaxData\Projects\2023\231207\00 BEC Canada Windy Ridge Phase 1 EA Survey\44 CAD\08 GIS\02 PRO - BREEDING BIRDS\PROV231207\02 BC WR BreedingBirds.mxd - sfowkes - 04/Apr/2024



- LEGEND**
- Nocturnal Survey Locations (8)
 - Turbine Location
 - Potential Development Area
- Nova Scotia Topographic Database (2023)**
- Addressed Road
 - Roads & Trails
 - Wetland
 - Waterbody
 - Watercourse



WINDY RIDGE WIND POWER PROJECT

Nocturnal Surveys 2012

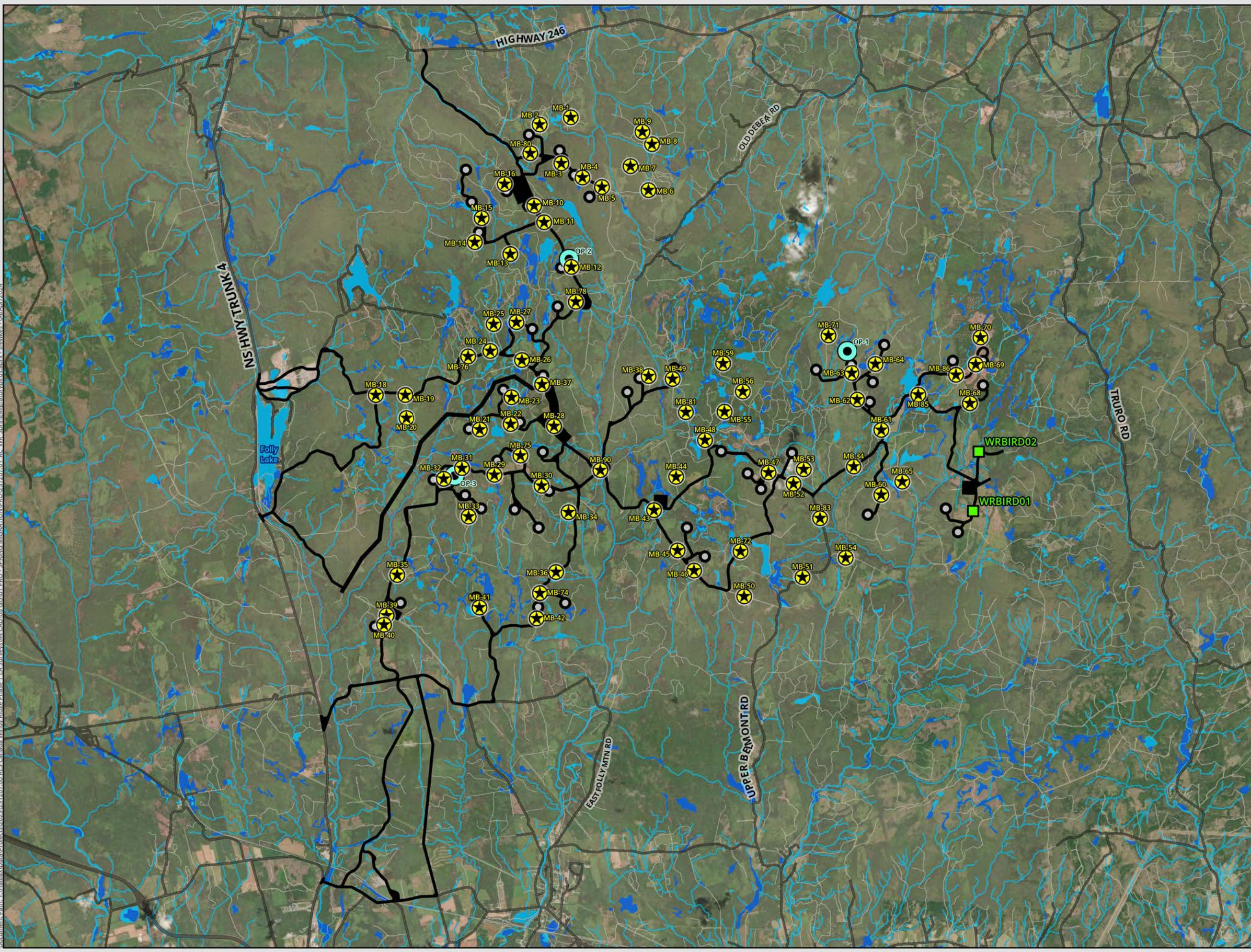
DATE: 2024-04-04	PROP N°: 231207	FIGURE: 12.3
DRAWN BY: MC	CHECKED BY: NM	APPROVED: LH

NOTES:

0 1,000 2,000 4,000 m

SCALE: 1:88,000 Coordinate System: NAD 1983 UTM Zone 20N
Units: Meter

Document Path: \\Halifax\Aerial\Projects\2023\231207\00 BEC Canada Windy Ridge Phase 1 EA\Surveys\44 CAD\08 GIS\01 PROJ - SPRING MIGRATION\PROJ\231207\01 BC WR_SpringMigration\BIRDS.aprx - slevkes - 04/Apr/2024



LEGEND

- Point Count Survey Location (78)
- Song Meter Location (2)
- Observation Point (3)
- Potential Development Area
- Turbine Location

Nova Scotia Topographic Database (2023)

- Addressed Road
- Roads & Trails
- Watercourse
- Waterbody
- Wetland



WINDY RIDGE WIND POWER PROJECT

Spring Migratory Bird Surveys

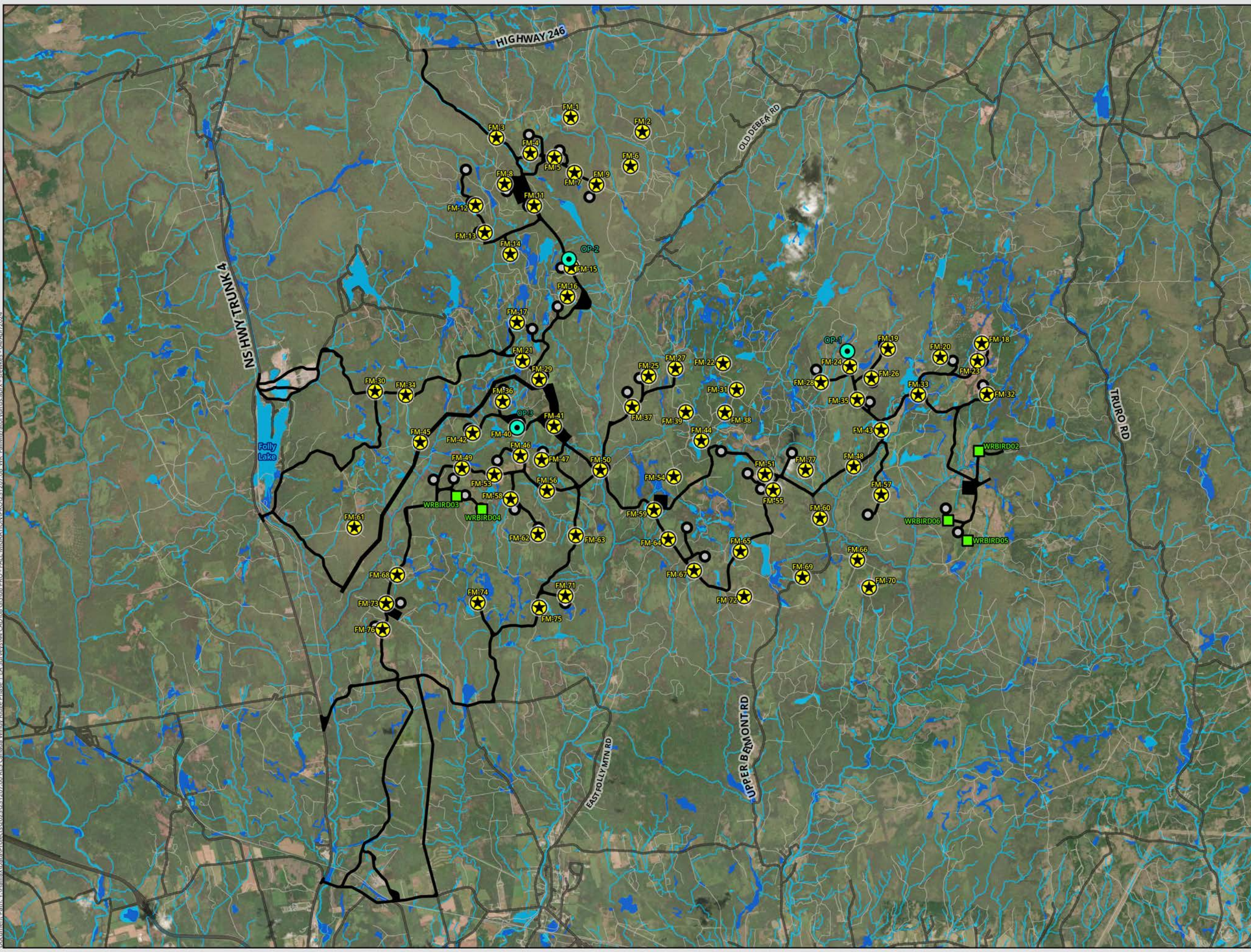
DATE: 2024-04-04	PROP N°: 231207	FIGURE: 12.4
DRAWN BY: SF	CHECKED BY: NM	APPROVED: LH

NOTES:

0 1,000 2,000 4,000 m

SCALE: 1:88,000 Coordinate System: NAD 1983 UTM Zone 20N
Units: Meter

Document Path: \\HalifaxData\Projects\2023\231207\00 BEC Canada Windy Ridge Phase 1 EA\Surveys\44 CAD\08 GIS\08 PRO - FALL MIGRATION\PROV\231207\08 WR FallMigratoryBirds.aprx - sfewkes - 04Apr2024



LEGEND

- Point Count Location (75)
- Song Meter Location (5)
- Observation Point (3)
- Potential Development Area
- Turbine Location

Nova Scotia Topographic Database (2023)

- Addressed Road
- Roads & Trails
- Wetland
- Waterbody
- Watercourse



**WINDY RIDGE
WIND POWER PROJECT**

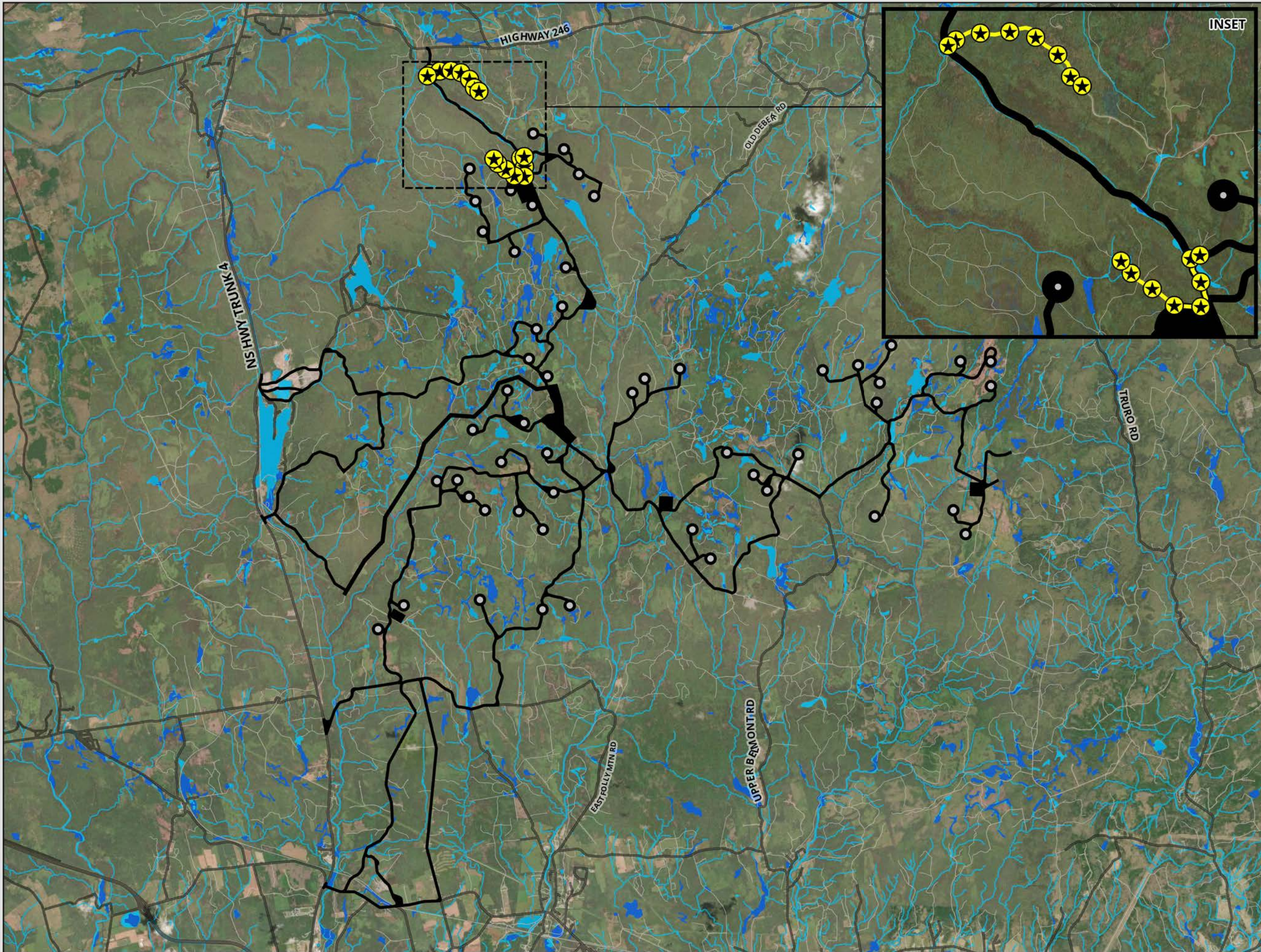
**Fall Migratory
Bird Surveys**

DATE: 2024-04-04	PROP N°: 231207	FIGURE: 12.5
DRAWN BY: SF	CHECKED BY: NM	APPROVED: LH

NOTES:

0 1,000 2,000 4,000 m

SCALE: 1:88,000 Coordinate System: NAD 1983 UTM Zone 20N
Units: Meter



- LEGEND**
- Point Count Survey Location
 - Turbine Location
 - Potential Development Area
- Nova Scotia Topographic Database (2023)*
- Addressed Road
 - Roads & Trails
 - Wetland
 - Waterbody
 - Watercourse



**WINDY RIDGE
WIND POWER PROJECT**

**Spring Migration
Surveys 2012**

DATE: 2024-04-04 PROP N°: 231207 FIGURE: **12.6**

DRAWN BY: MC CHECKED BY: NM APPROVED: LH

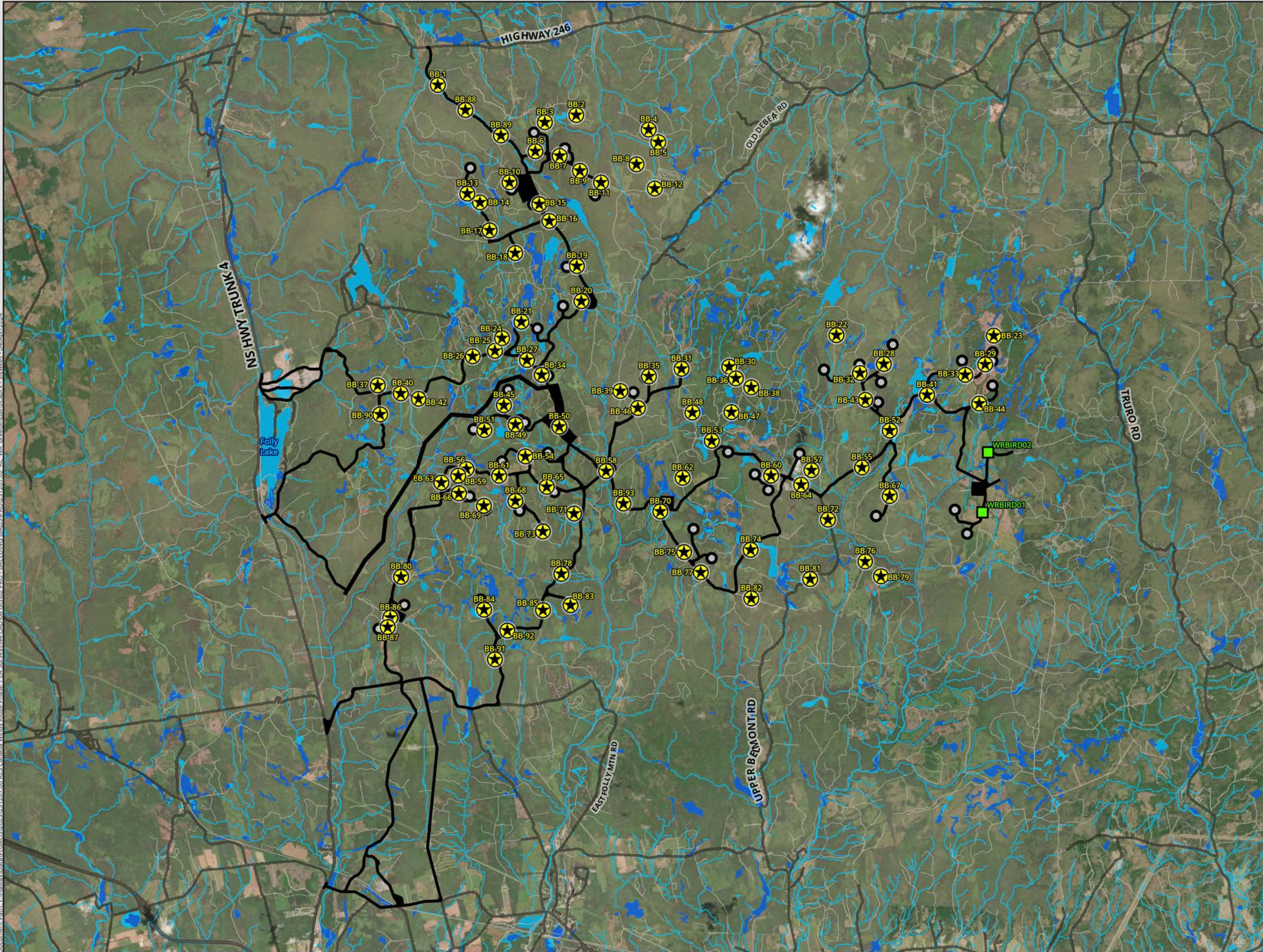
NOTES:



SCALE: 1:88,000 Coordinate System: NAD 1983 CSRS UTM Zone 18N
Units: Meter



Document Path: \\Halifax\Aerial\Projects\2023\231207\00 BEC Canada Windy Ridge Phase 1 EA\Surveys\44 CAD\08 GIS\02 PRO - BREEDING BIRDS\PROV\231207\02 RC WR BreedingBirds.mxd - sfowkes - 04/Apr/2024



LEGEND

- Breeding Bird Point Count Location (93)
- Song Meter Location (2)
- Potential Development Area
- Turbine Location

Nova Scotia Topographic Database (2023)

- Addressed Road
- Roads & Trails
- Watercourse
- Waterbody
- Wetland



WINDY RIDGE WIND POWER PROJECT

Breeding Bird Point Count Surveys

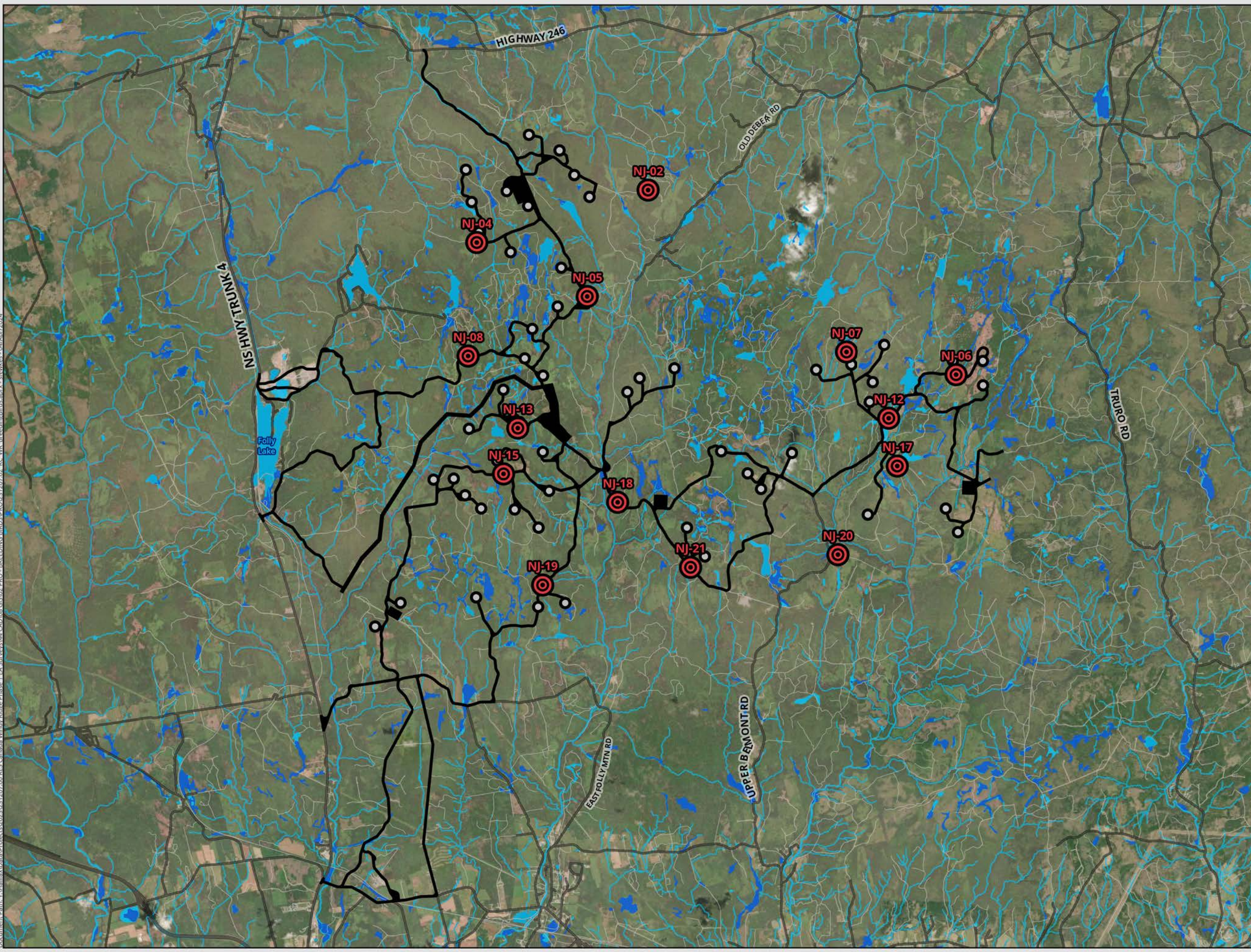
DATE: 2024-04-04	PROP N°: 231207	FIGURE: 12.7
DRAWN BY: SF	CHECKED BY: NM	APPROVED: LH

NOTES:

0 1,000 2,000 4,000 m

SCALE: 1:88,000 Coordinate System: NAD 1983 UTM Zone 20N
Units: Meter

Document Path: \\Halifax\Aerial\Projects\2023\231207\00 BEC Canada Windy Ridge Phase 1 EA Surveys\44 CAD\08 GIS\02 PRO - BREEDING BIRDS\PROV231207\02 BC WR BreedingBirds.mxd - sfwakes - 04/Apr/2024



- LEGEND**
- Nightjar Bird Survey Location (14)
 - Potential Development Area
 - Turbine Location
- Nova Scotia Topographic Database (2023)
- Addressed Road
 - Roads & Trails
 - Watercourse
 - Waterbody
 - Wetland



WINDY RIDGE WIND POWER PROJECT

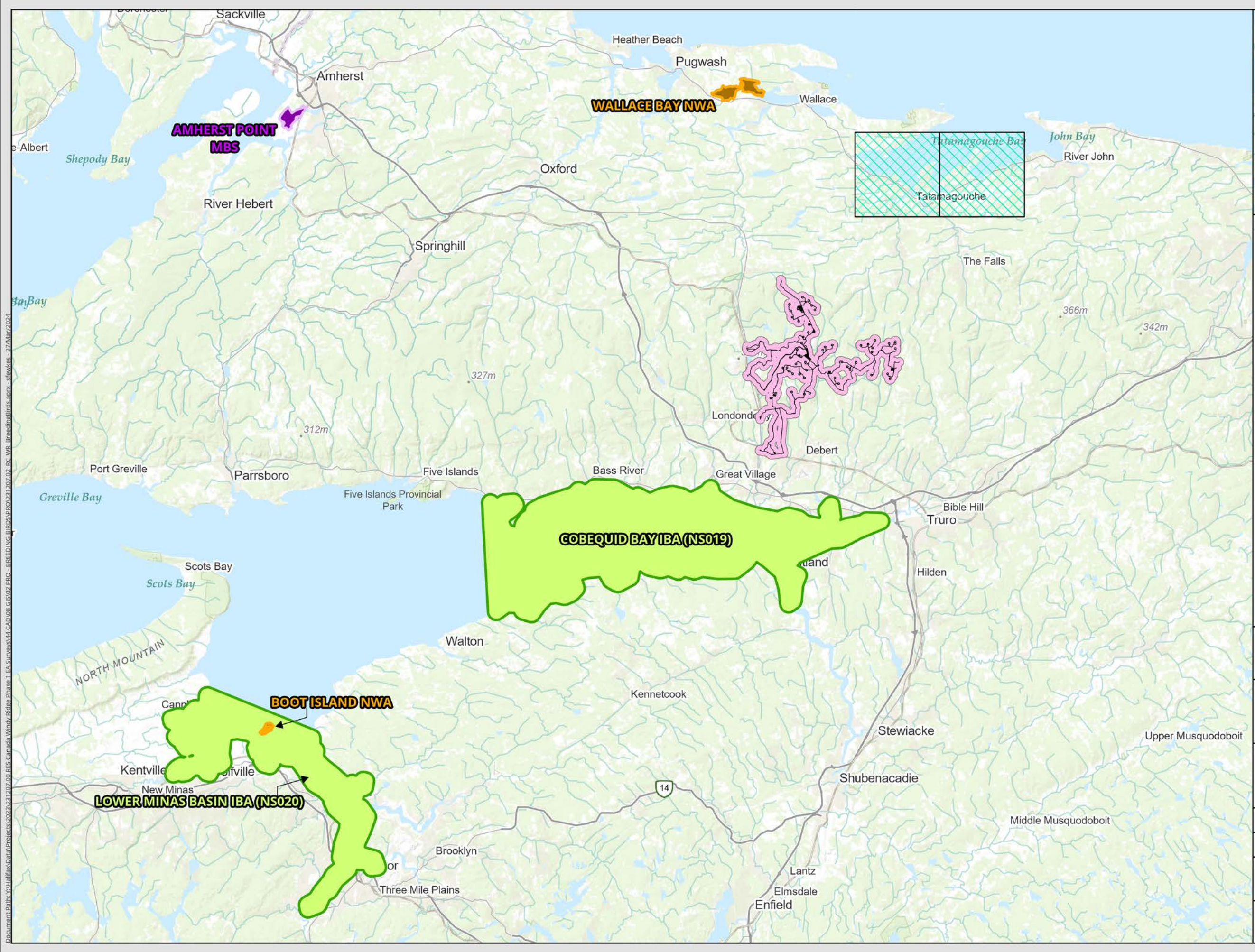
Nightjar Bird Surveys

DATE: 2024-04-04	PROP N°: 231207	FIGURE: 12.8
DRAWN BY: SF	CHECKED BY: NM	APPROVED: LH

NOTES:

0 1,000 2,000 4,000 m

SCALE: 1:88,000 Coordinate System: NAD 1983 UTM Zone 20N
Units: Meter



- LEGEND**
- Proposed Critical Habitat Area for Bobolink (ECCC, 2022)
 - National Wildlife Management Area (NWA)
 - National Wildlife Sanctuary (MBS)
 - Important Bird Area (IBA)
- Project Components**
- Potential Development Area
 - Local Assessment Area
 - Turbine Location



**WINDY RIDGE
WIND POWER PROJECT**

**Bird Conservation
Areas**

DATE: 2024-03-27	PROP N°: 231207	FIGURE: 12.9
DRAWN BY: SF	CHECKED BY: NM	APPROVED: LH

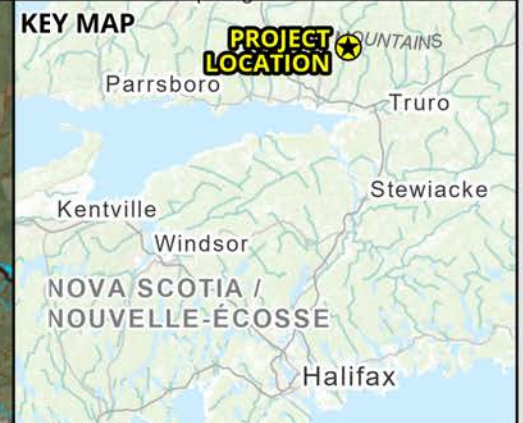
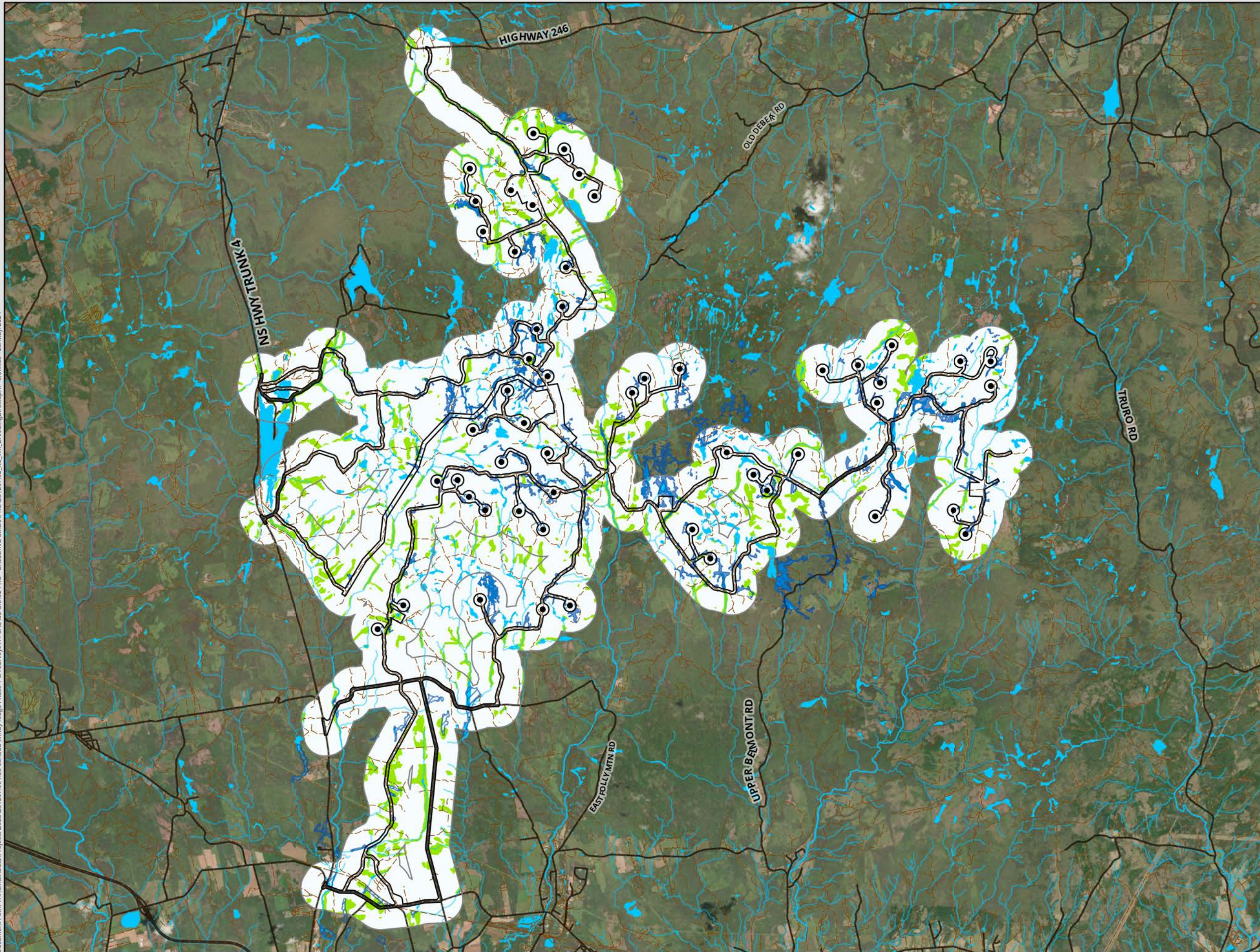
NOTES:

0 5,000 10,000 20,000 m

SCALE: 1:425,000 Coordinate System: NAD 1983 UTM Zone 20N
Units: Meter

Document Path: \\Halifax\Aerial\Projects\2023\231207_00_BES_Canada_Windy_Ridge_Phase_1_EA_Survey\44_CAD\08_GIS\02_PRO-BREEDING_BIRDS\PROV\231207_02_RC_WR_BreedingBirds.aprx - sfwakes - 27Mar2024

Document Path: Y:\Halifax\Data\Projects\2023\231207\00 RES Canada Windy Ridge Phase 1 EA Surveys\44 CAD\08 GIS\02 PRO - BREEDING BIRDS\PROV231207\02_RC_WR_BreedingBirds.aprx - sfewkes - 28/May/2024



- LEGEND**
- Possible Suitable Habitat
 - Not Suitable Habitat
 - Suitable Habitat
 - Local Assessment Area for Birds
 - Potential Development Area
 - Turbine Location
 - Wetlands (Delineated - CBCL, 2023)
- Nova Scotia Topographic Database (2023)**
- Addressed Road
 - Trail / Resource Road / No Maintenance
 - Wetlands
 - Waterbody
 - Watercourse



**WINDY RIDGE
WIND POWER PROJECT**

**Possible Suitable Breeding
Habitat for
Canada Warbler**

DATE: 2024-05-28 PROP N°: 231207 FIGURE: **12.10**

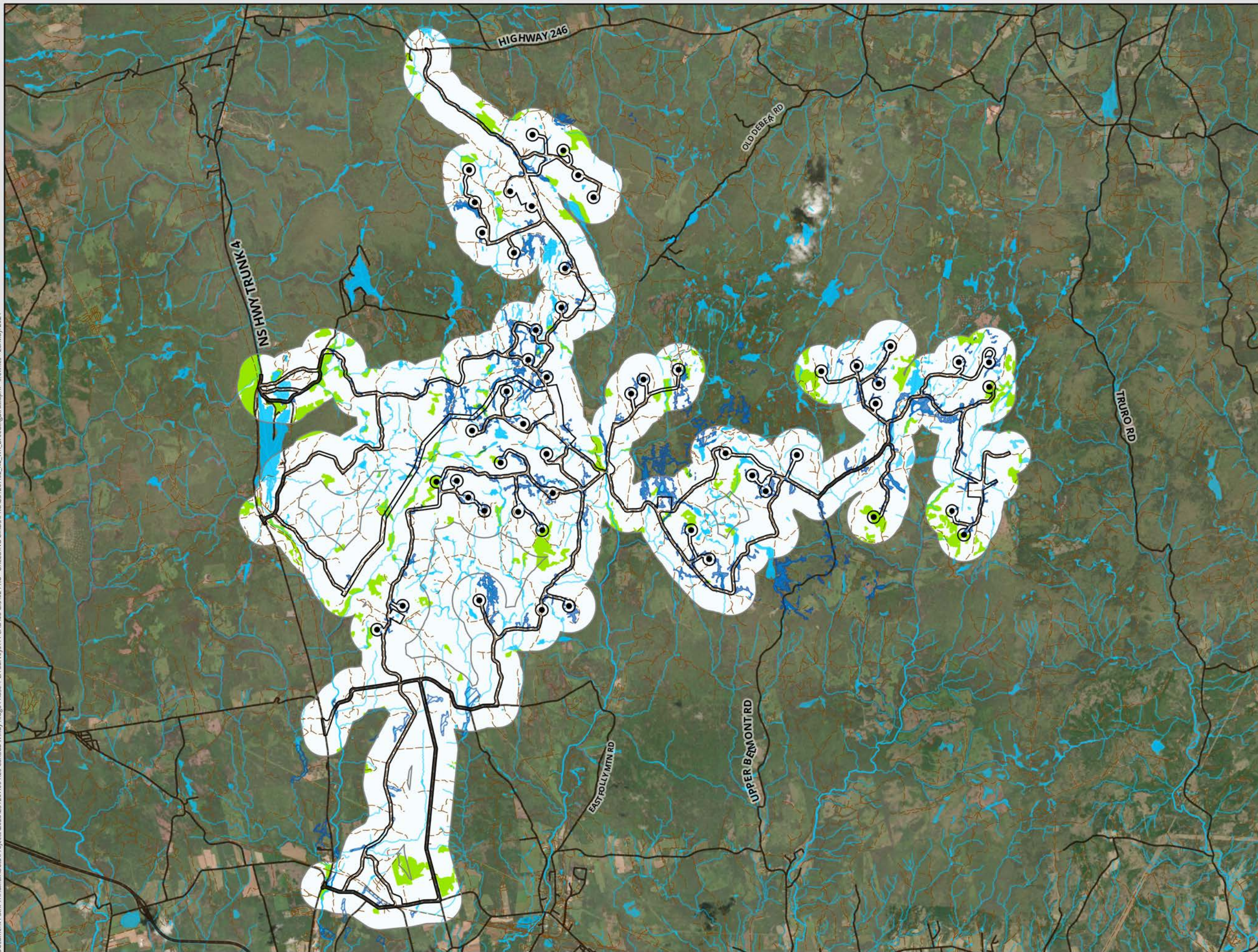
DRAWN BY: MC CHECKED BY: NM APPROVED: LH

NOTES:

0 500 1,000 2,000 m
SCALE: 1:88,000 Coordinate System: NAD 1983 UTM Zone 20N
Units: Meter



Document Path: Y:\Halifax\Data\Projects\2023\231207\00 RES Canada Windy Ridge Phase 1 EA Surveys\44 CAD\08 GIS\02 PRO - BREEDING BIRDS\PROV231207\02_RC_WR_BreedingBirds.aprx - sfwkes - 28/May/2024



- LEGEND**
- Possible Suitable Habitat**
 - Not Suitable Habitat
 - Suitable Habitat
 - ▭ Local Assessment Area for Birds
 - ▭ Potential Development Area
 - Turbine Location
 - Wetlands (Delineated - CBCL, 2023)
- Nova Scotia Topographic Database (2023)**
- Addressed Road
 - Trail / Resource Road / No Maintenance
 - Wetlands
 - Waterbody
 - Watercourse



**WINDY RIDGE
WIND POWER PROJECT**

**Possible Suitable Breeding
Habitat for Chimney Swift**

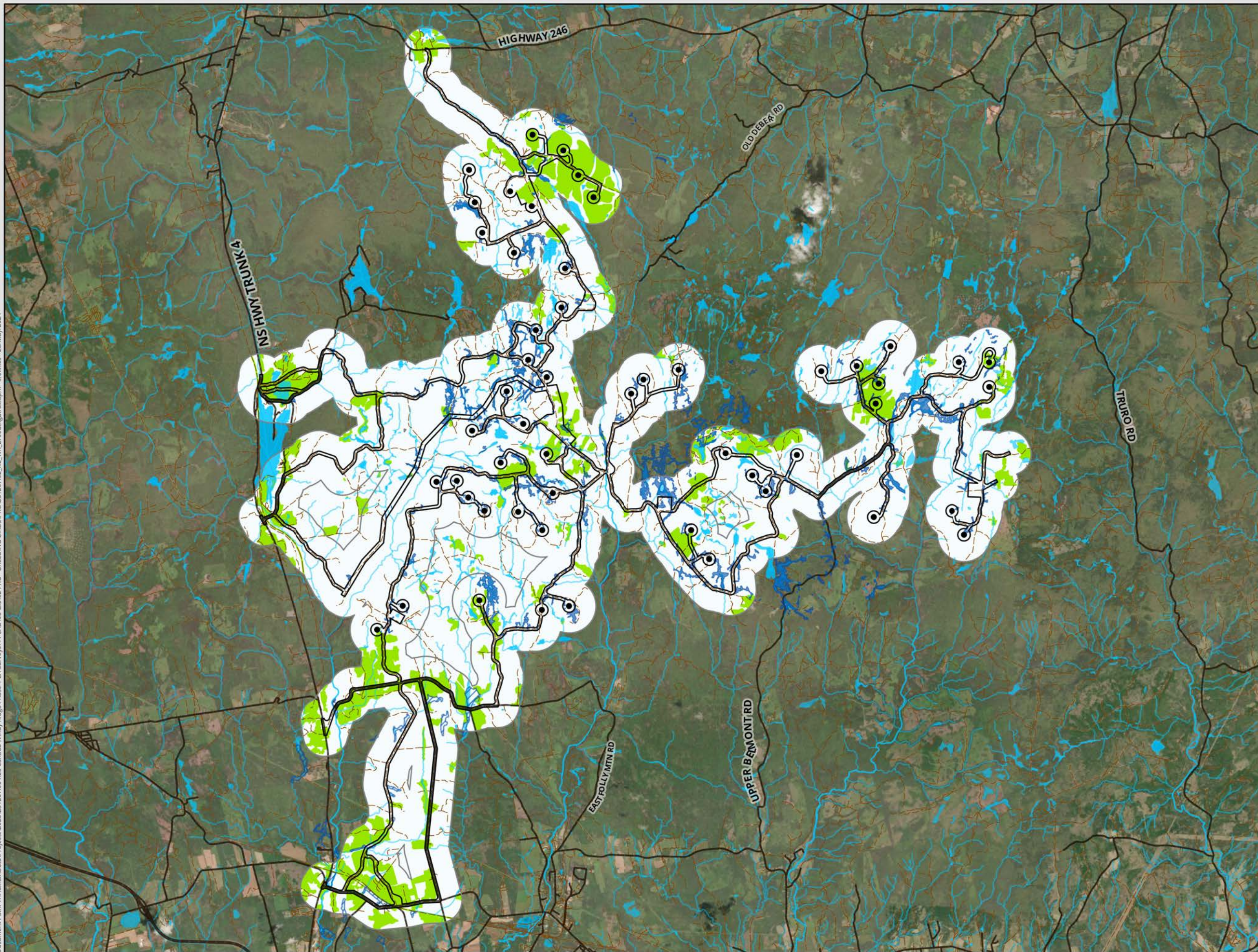
DATE: 2024-05-28	PROP N°: 231207	FIGURE: 12.11
DRAWN BY: MC	CHECKED BY: NM	APPROVED: LH

NOTES:

0 500 1,000 2,000 m

SCALE: 1:88,000 Coordinate System: NAD 1983 UTM Zone 20N
Units: Meter

Document Path: Y:\Halifax\Data\Projects\2023\231207\00 RES Canada Windy Ridge Phase 1 EA Surveys\44 CAD\08 GIS\02 PRO - BREEDING BIRDS\PROV231207\02_RC_WR_BreedingBirds.aprx - sfwkes - 28/May/2024



- LEGEND**
- Possible Suitable Habitat
 - Not Suitable Habitat
 - Suitable Habitat
 - Local Assessment Area for Birds
 - Potential Development Area
 - Turbine Location
 - Wetlands (Delineated - CBCL, 2023)
- Nova Scotia Topographic Database (2023)**
- Addressed Road
 - Trail / Resource Road / No Maintenance
 - Wetlands
 - Waterbody
 - Watercourse



**WINDY RIDGE
WIND POWER PROJECT**

**Possible Suitable Breeding
Habitat for
Common Nighthawk**

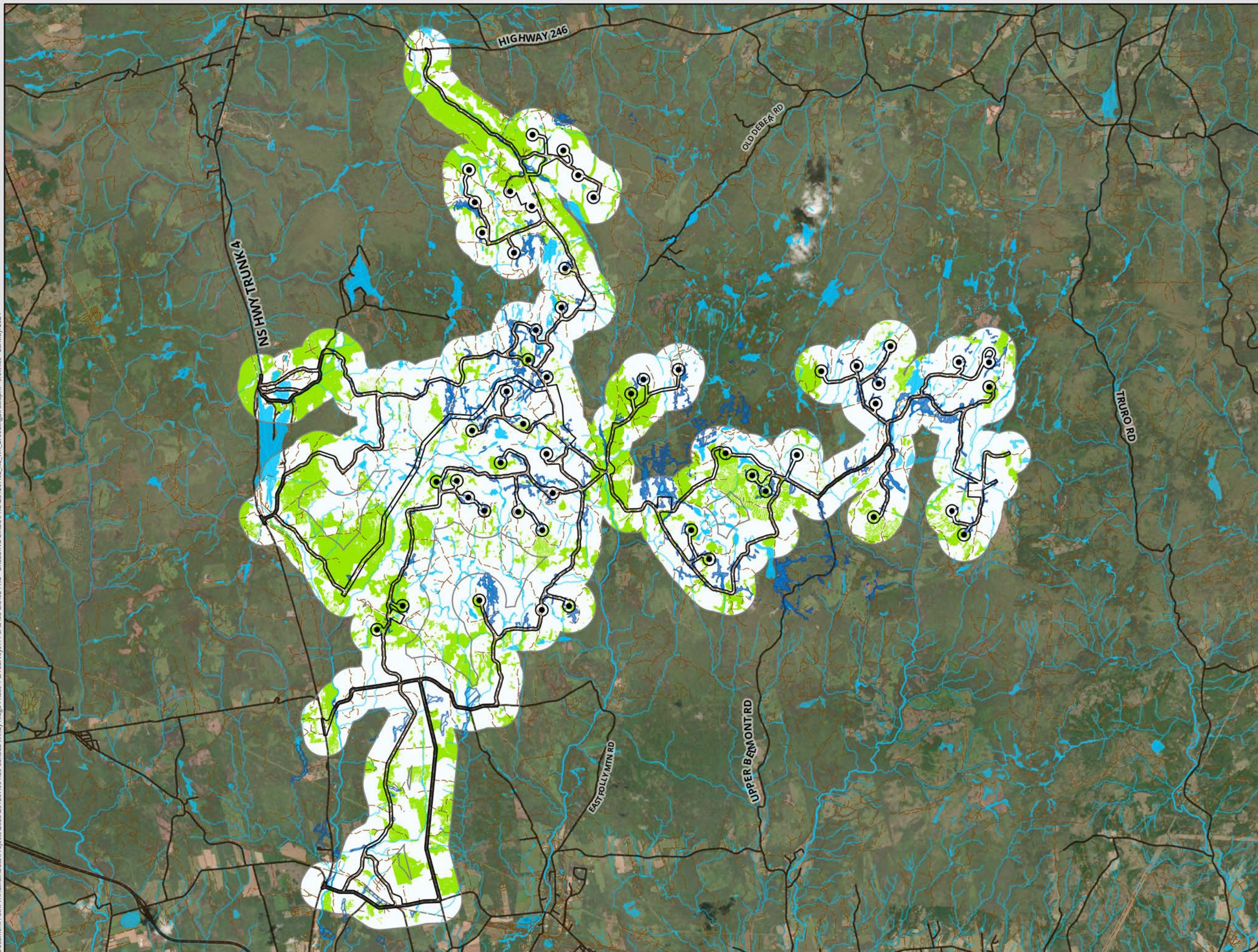
DATE: 2024-05-28	PROP N°: 231207	FIGURE: 12.12
DRAWN BY: MC	CHECKED BY: NM	APPROVED: LH

NOTES:

0 500 1,000 2,000 m

SCALE: 1:88,000 Coordinate System: NAD 1983 UTM Zone 20N
Units: Meter

Document Path: Y:\Halifax\Data\Projects\2023\231207\00 RES Canada Windy Ridge Phase 1 EA Surveys\44 CAD\08 GIS\02 PRO - BREEDING BIRDS\PROV\231207\02_RC_WR_BreedingBirds.aprx - sfewkes - 28/May/2024



LEGEND

Possible Suitable Habitat

- Not Suitable Habitat
- Suitable Habitat

Local Assessment Area for Birds

Potential Development Area

- Turbine Location
- Wetlands (Delineated - CBCL, 2023)

Nova Scotia Topographic Database (2023)

- Addressed Road
- Trail / Resource Road / No Maintenance
- Wetlands
- Waterbody
- Watercourse



WINDY RIDGE WIND POWER PROJECT

Possible Suitable Breeding Habitat for Eastern Wood-pewee

DATE: 2024-05-28	PROP N°: 231207	FIGURE: 12.13
DRAWN BY: MC	CHECKED BY: NM	APPROVED: LH

NOTES:

0 500 1,000 2,000 m

SCALE: 1:88,000 Coordinate System: NAD 1983 UTM Zone 20N Units: Meter

