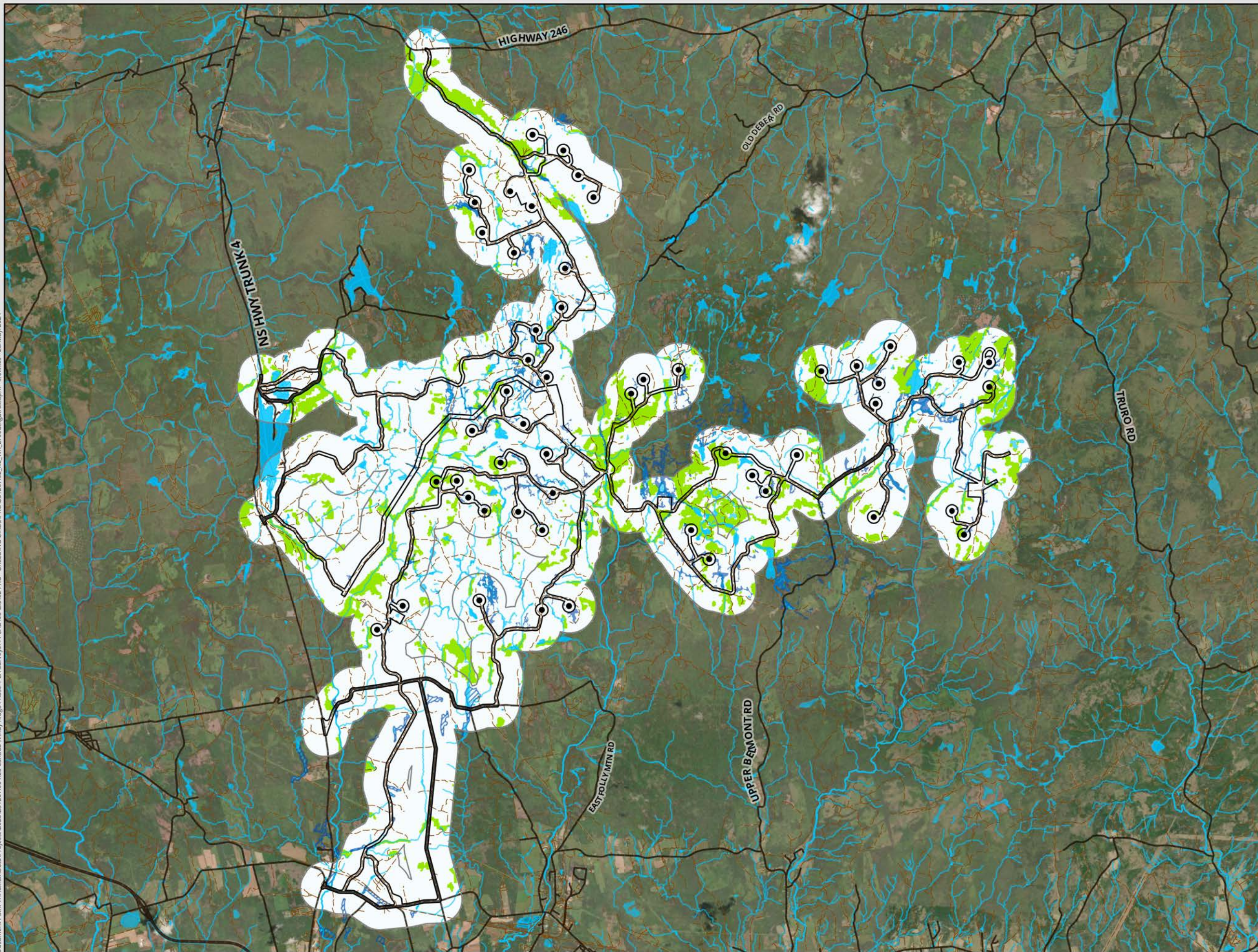


Document Path: Y:\Halifax\Data\Projects\2023\231207\00 RES Canada Windy Ridge Phase 1 EA Surveys\44 CAD\08 GIS\02 PRO - BREEDING BIRDS\PROV231207\02_RC_WR_BreedingBirds.aprx - sfewkes - 28/May/2024



- LEGEND**
- Possible Suitable Habitat
 - Not Suitable Habitat
 - Suitable Habitat
 - Local Assessment Area for Birds
 - Potential Development Area
 - Turbine Location
 - Wetlands (Delineated - CBCL, 2023)
- Nova Scotia Topographic Database (2023)**
- Addressed Road
 - Trail / Resource Road / No Maintenance
 - Wetlands
 - Waterbody
 - Watercourse



**WINDY RIDGE
WIND POWER PROJECT**

**Possible Suitable Breeding
Habitat for
Evening Grosbeak**

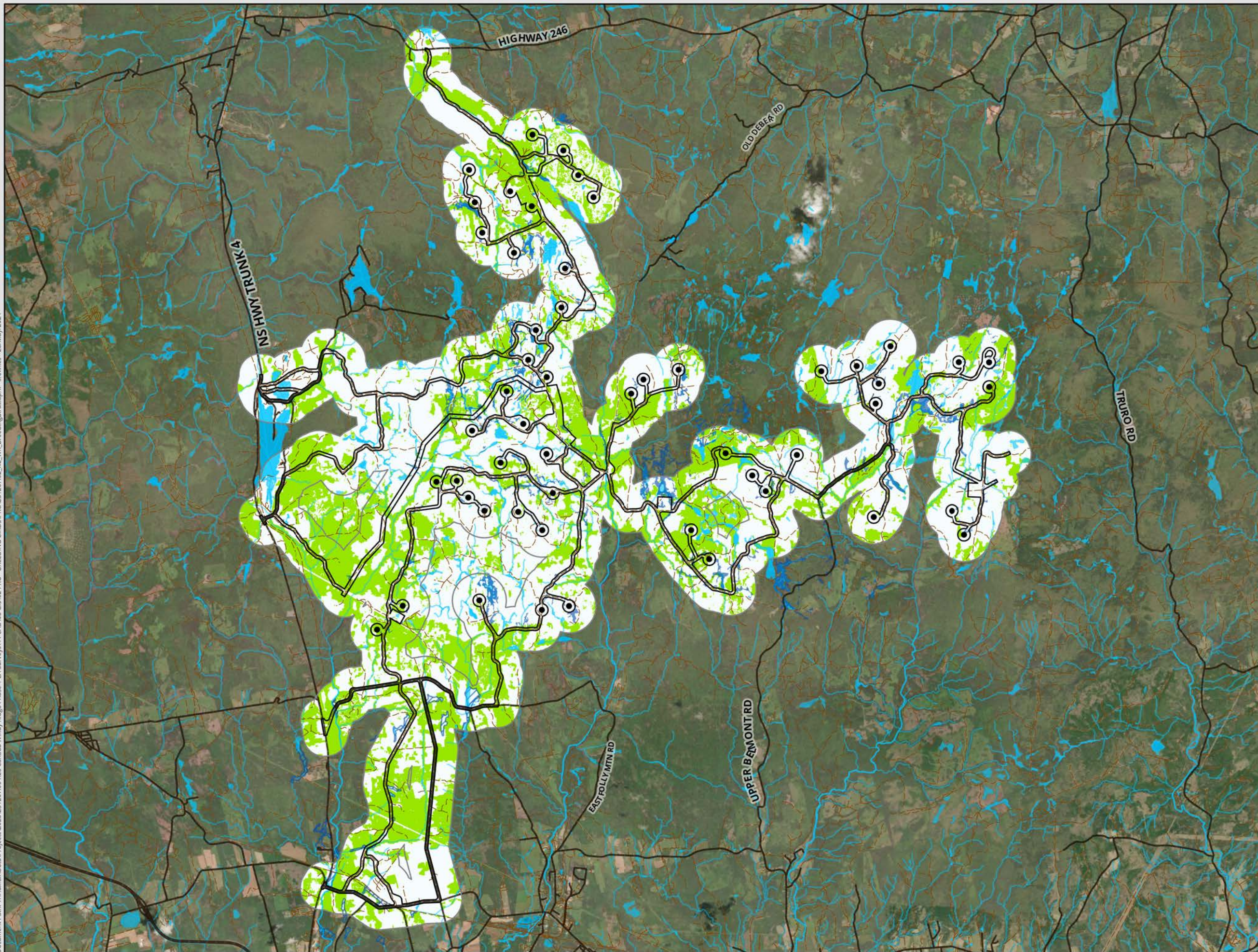
DATE: 2024-05-28	PROP N°: 231207	FIGURE: 12.14
DRAWN BY: MC	CHECKED BY: NM	APPROVED: LH

NOTES:

0 500 1,000 2,000 m

SCALE: 1:88,000 Coordinate System: NAD 1983 UTM Zone 20N
Units: Meter

Document Path: Y:\Halifax\Data\Projects\2023\231207\00 RES Canada Windy Ridge Phase 1 EA Surveys\44 CAD\08 GIS\02 PRO - BREEDING BIRDS\PROV231207\02_RC_WR_BreedingBirds.aprx - sfewkes - 28/May/2024



- LEGEND**
- Possible Suitable Habitat**
 - Not Suitable Habitat
 - Suitable Habitat
 - ▭ Local Assessment Area for Birds
 - ▭ Potential Development Area
 - Turbine Location
 - Wetlands (Delineated - CBCL, 2023)
- Nova Scotia Topographic Database (2023)**
- Addressed Road
 - Trail / Resource Road / No Maintenance
 - Wetlands
 - Waterbody
 - Watercourse



**WINDY RIDGE
WIND POWER PROJECT**

**Possible Suitable Breeding
Habitat for
Olive-sided Flycatcher**

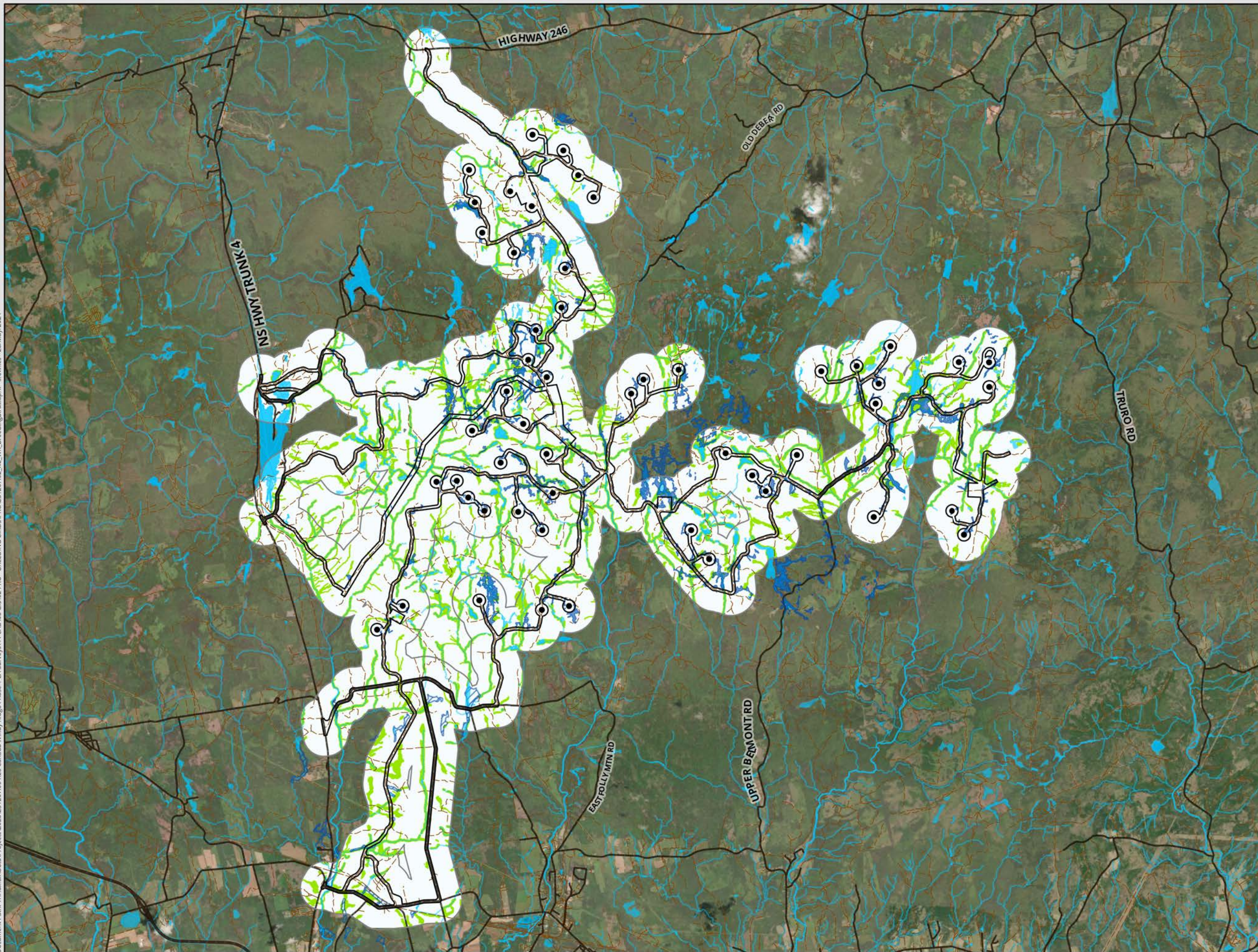
DATE: 2024-05-28	PROP N°: 231207	FIGURE: 12.15
DRAWN BY: MC	CHECKED BY: NM	APPROVED: LH

NOTES:

0 500 1,000 2,000 m

SCALE: 1:88,000 Coordinate System: NAD 1983 UTM Zone 20N
Units: Meter

Document Path: Y:\Halifax\Data\Projects\2023\231207\00 RES Canada Windy Ridge Phase 1 EA Surveys\44 CAD\08 GIS\02 PRO - BREEDING BIRDS\PROJ231207\02_RC_WR_BreedingBirds.aprx - sfwkes - 28/May/2024



- LEGEND**
- Possible Suitable Habitat
 - Not Suitable Habitat
 - Suitable Habitat
 - Local Assessment Area for Birds
 - Potential Development Area
 - Turbine Location
 - Wetlands (Delineated - CBCL, 2023)
- Nova Scotia Topographic Database (2023)**
- Addressed Road
 - Trail / Resource Road / No Maintenance
 - Wetlands
 - Waterbody
 - Watercourse



**WINDY RIDGE
WIND POWER PROJECT**

**Possible Suitable Breeding
Habitat for Rusty Blackbird**

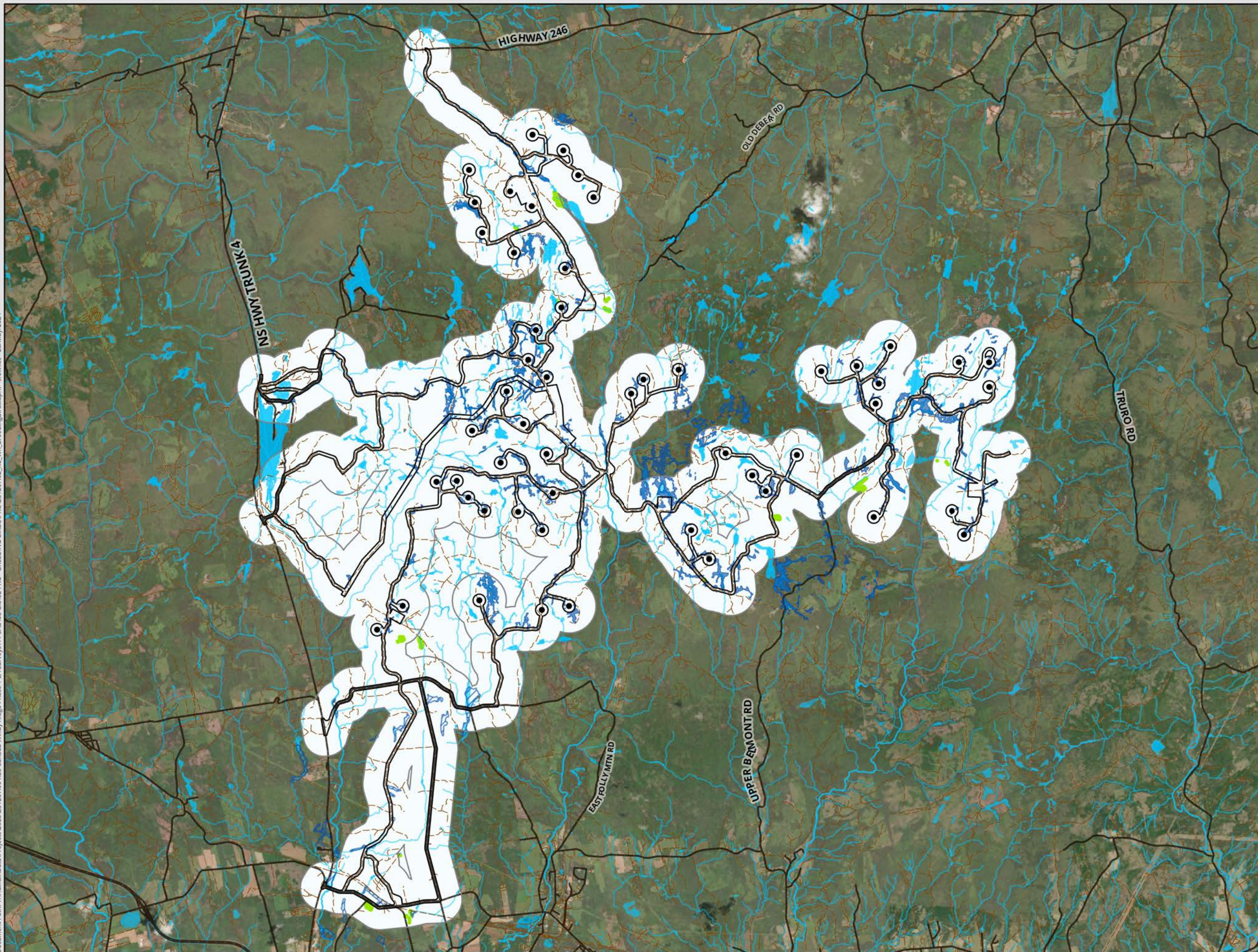
DATE: 2024-05-28	PROP N°: 231207	FIGURE: 12.16
DRAWN BY: MC	CHECKED BY: NM	APPROVED: LH

NOTES:

0 500 1,000 2,000 m

SCALE: 1:88,000 Coordinate System: NAD 1983 UTM Zone 20N
Units: Meter

Document Path: Y:\Halifax\Data\Projects\2023\231207\00 RES Canada Windy Ridge Phase 1 EA Surveys\44 CAD\08 GIS\02 PRO - BREEDING BIRDS\PROV231207\02_RC_WR_BreedingBirds.aprx - sfowkes - 28/May/2024



- LEGEND**
- Possible Suitable Habitat
 - Not Suitable Habitat
 - Suitable Habitat
 - Local Assessment Area for Birds
 - Potential Development Area
 - Turbine Location
 - Wetlands (Delineated - CBCL, 2023)
- Nova Scotia Topographic Database (2023)**
- Addressed Road
 - Trail / Resource Road / No Maintenance
 - Wetlands
 - Waterbody
 - Watercourse



**WINDY RIDGE
WIND POWER PROJECT**

**Possible Suitable Breeding
Habitat for Wood Thrush**

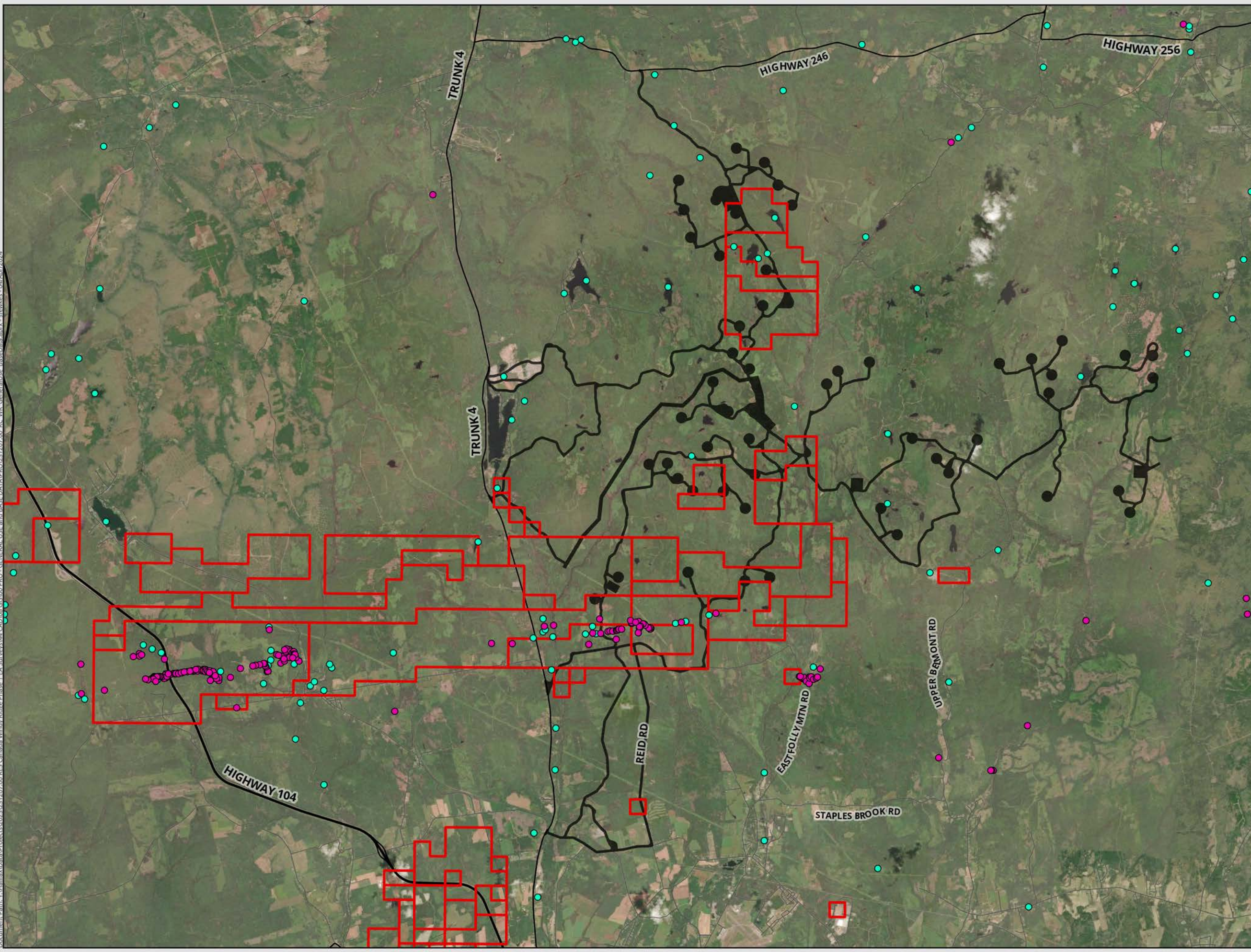
DATE: 2024-05-28	PROP N°: 231207	FIGURE: 12.17
DRAWN BY: MC	CHECKED BY: NM	APPROVED: LH

NOTES:

0 500 1,000 2,000 m

SCALE: 1:88,000 Coordinate System: NAD 1983 UTM Zone 20N
Units: Meter

Document Path: \\Halifax\Data\Projects\2023\231207\00 BES Canada Windy Ridge Phase 1 EA Surveys\44 CAD\08 GIS\00 PRO - GENERAL USE and BASE DATA\PROV\231207\00 BC WR GeneralUse BaseData.aprx - sfewkes - 04/Apr/2024



- LEGEND**
- Addressed Road (NSTD, 2023)
 - Potential Development Area
- Industrial Commodities**
- Abandoned Mine Opening
 - Mineral Occurrence
 - ▭ Mineral Claims / Rights of Lease



WINDY RIDGE WIND POWER PROJECT

Mineral Resources

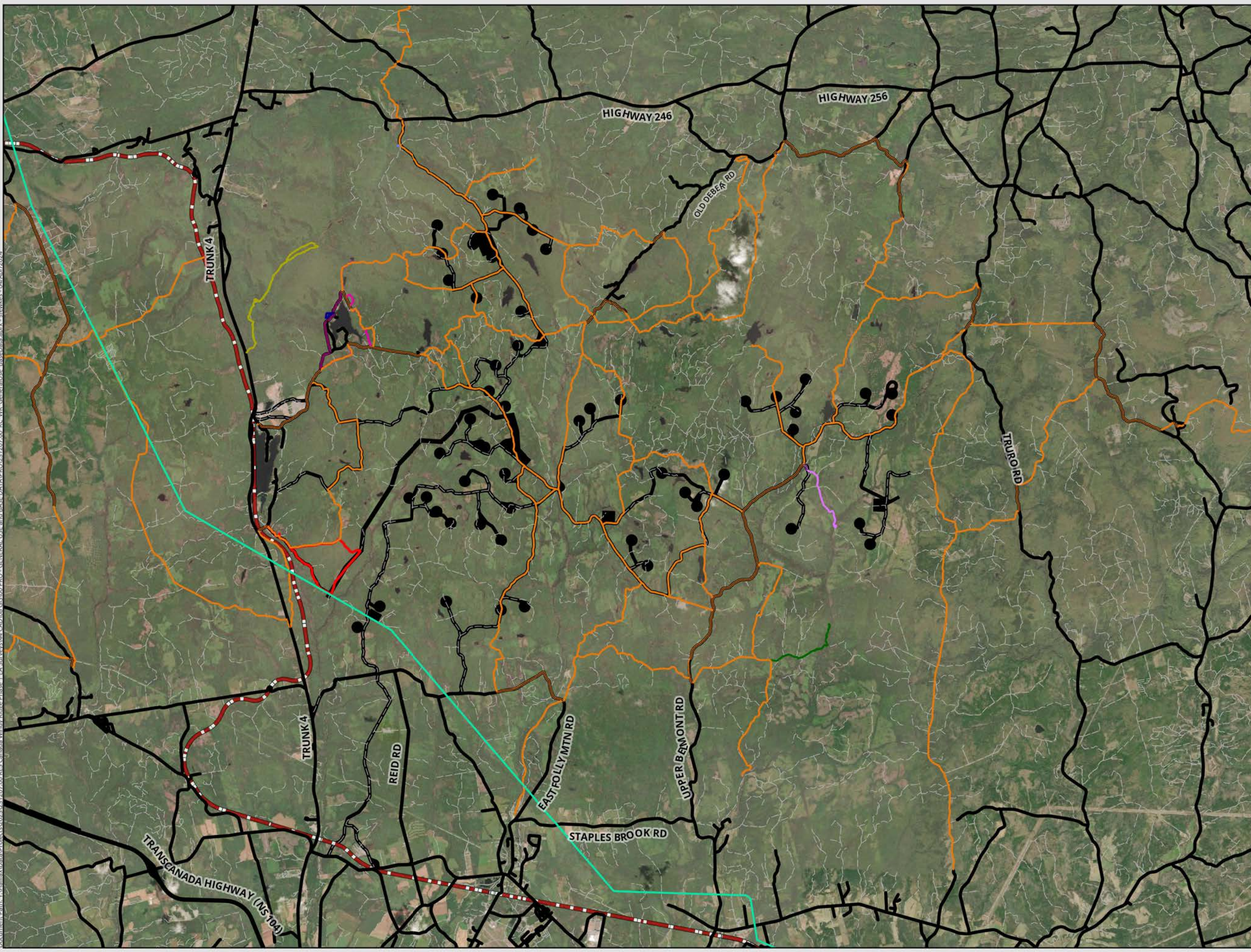
DATE: 2024-04-04	PROJ N°: 231207	FIGURE: 13.1
DRAWN BY: SF	CHECKED BY: CD	APPROVED: NM

NOTES:

0 1,000 2,000 4,000 m

SCALE: 1:96,000 Coordinate System: NAD 1983 UTM Zone 20N
Units: Meter

Document Path: \\Halifax\Data\Projects\2023\231207\00 BCS Canada Windy Ridge Phase 1 EA\Surveys\44 CAD\08 GIS\00 PRO - GENERAL USE and BASE DATA\PROV\231207\00 BC WR GeneralUse BaseData.aprx - sfewkes - 04/Apr/2024



- LEGEND**
- Potential Development Area
 - Addressed Road (NSTD, 2023)
 - NSPI Power Corridor
 - Canadian National Rail Line (CN)
 - Trail / Resource Road / No Maintenance
 - Snowmobile Association of Nova Scotia Trail
- Hiking Trails (AllTrails LLC)**
- Annandale Falls
 - Chiganois River Falls
 - Hart Lake Loop and Trout Pond
 - Horse Pasture Brook Falls
 - Sam Higgins Falls
 - Stevens Road Loop
 - Upper Hart Lake Brook Falls



WINDY RIDGE WIND POWER PROJECT

Land Disturbance

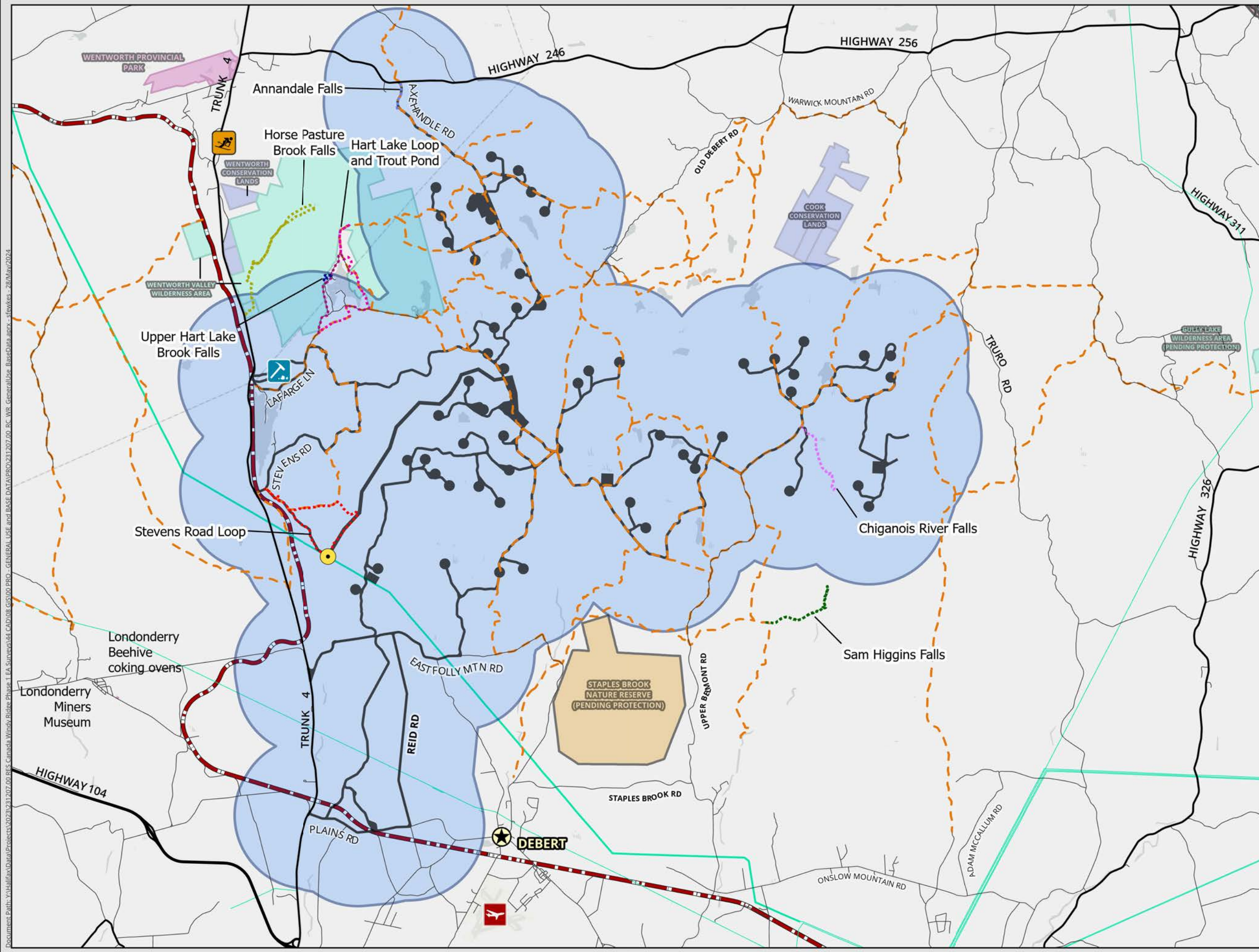
DATE: 2024-04-04	PROJ N°: 231207	FIGURE: 13.2
DRAWN BY: SF	CHECKED BY: CD	APPROVED: NM

NOTES:

0 1,250 2,500 5,000 m

SCALE: 1:100,000 Coordinate System: NAD 1983 UTM Zone 20N Units: Meter

Document Path: \\Y:\Halifax\Area\Projects\2023\231207\00\BES_Canada_WindyRidge_Phase1_EA_Survey\441_CADD\08_GIS\00_PRO_GENERAL_USE\BASE_DATA\PROV\31207\00_BC_WR_GeneralUse_BaseData.aprx - sfewkes - 28/May/2024



- LEGEND**
- Potential Development Area
 - Local Assessment Area for the Socio-Economic Environment
 - Point of NSPI Interconnection
- Points of Interest**
- Debert Airport
 - Quality Concrete Quarry
 - Ski Wentworth
 - Town of Debert
 - Canadian National Rail Line (CN)
 - NSPI Power Corridor
 - Snowmobile Association of Nova Scotia Trail
 - Addressed Road (NSTD, 2023)
- Hiking Trails (AllTrails LLC)**
- Annandale Falls
 - Chiganois River Falls
 - Hart Lake Loop and Trout Pond
 - Horse Pasture Brook Falls
 - Sam Higgins Falls
 - Stevens Road Loop
 - Upper Hart Lake Brook Falls



**WINDY RIDGE
WIND POWER PROJECT**

**Socio-Economic
Features**

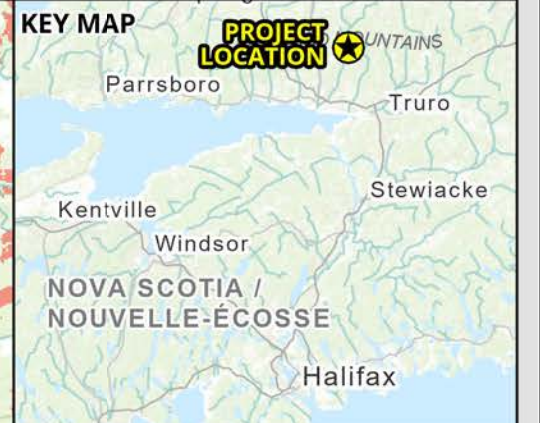
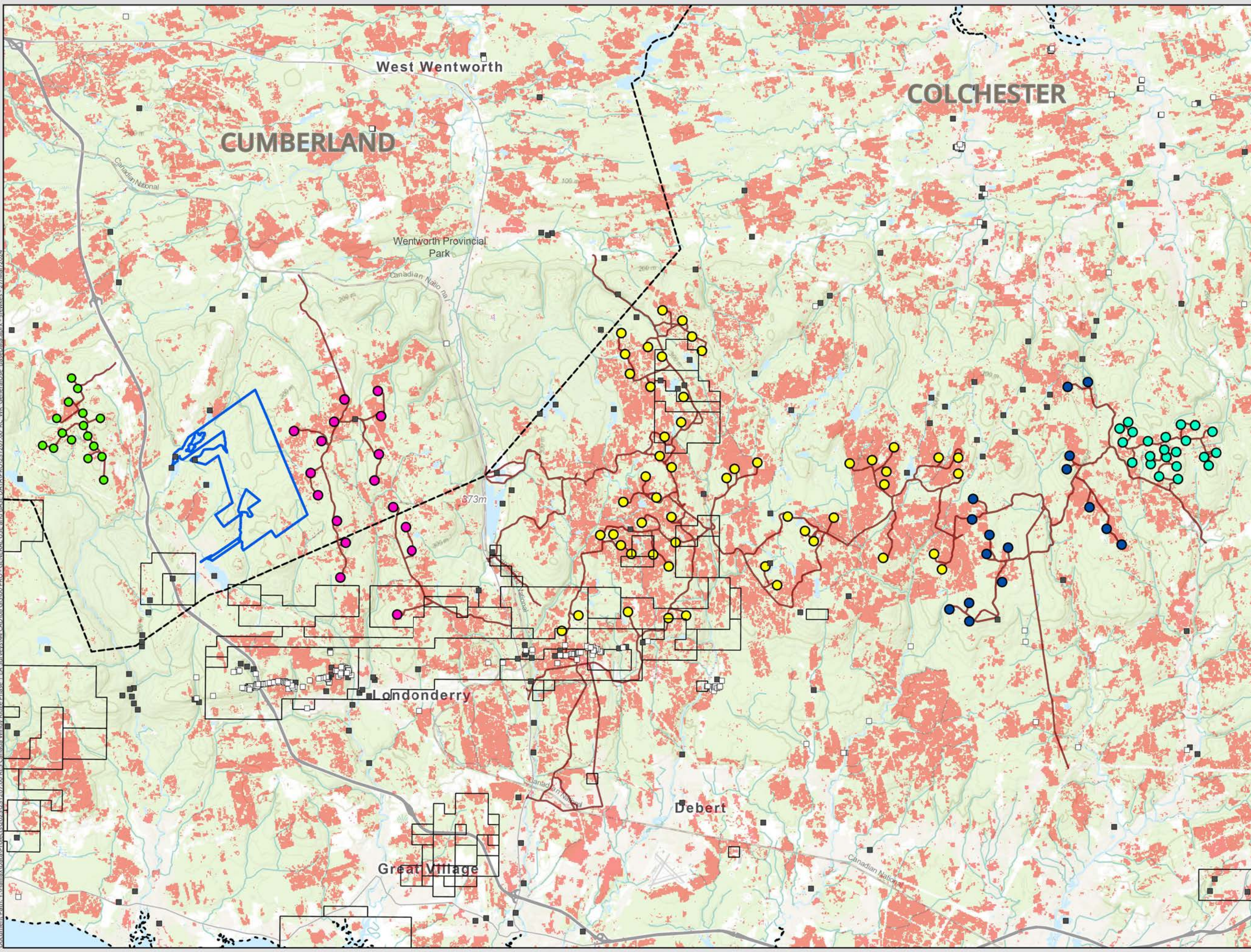
DATE: 2024-05-28	PROJ N°: 231207	FIGURE: 13.3
DRAWN BY: SF	CHECKED BY: CD	APPROVED: NM

NOTES:

0 1,250 2,500 5,000 m

SCALE: 1:100,000 Coordinate System: NAD 1983 UTM Zone 20N
Units: Meter

Document Path: \\HalifaxData\Projects\2023\20231207_00_BCS_Canada_WindyRidge_Phase_1_EA_Surveys\44_CAD\08_GIS\000_PROJ_GENERAL_USE_and_BASE_DATA\PROJ\20231207_00_BCS_Wind_GeneralUse_BaseData.aprx - slevkes - 27/Mar/2024



- LEGEND**
- Cumberland / Colchester Wind Turbine Locations**
- Windy Ridge Turbine Location (52)
 - Westchester Turbine Location (16)
 - Nuttby Turbine Location (22)
 - Higgins Mountain Turbine Location (17)
 - Kmntuk Turbine Location (16)
 - ▭ Blueberry Acres
 - Access Roads
 - Cumberland / Colchester Municipal Boundary
 - Boundary
 - Area of Forest Loss / Disturbance Between 2001 and 2022
- Industrial Commodities**
- Abandoned Mine Opening
 - Mineral Occurrence
 - Mineral Claims / Rights of Lease



WINDY RIDGE WIND POWER PROJECT

Other Projects & Activities

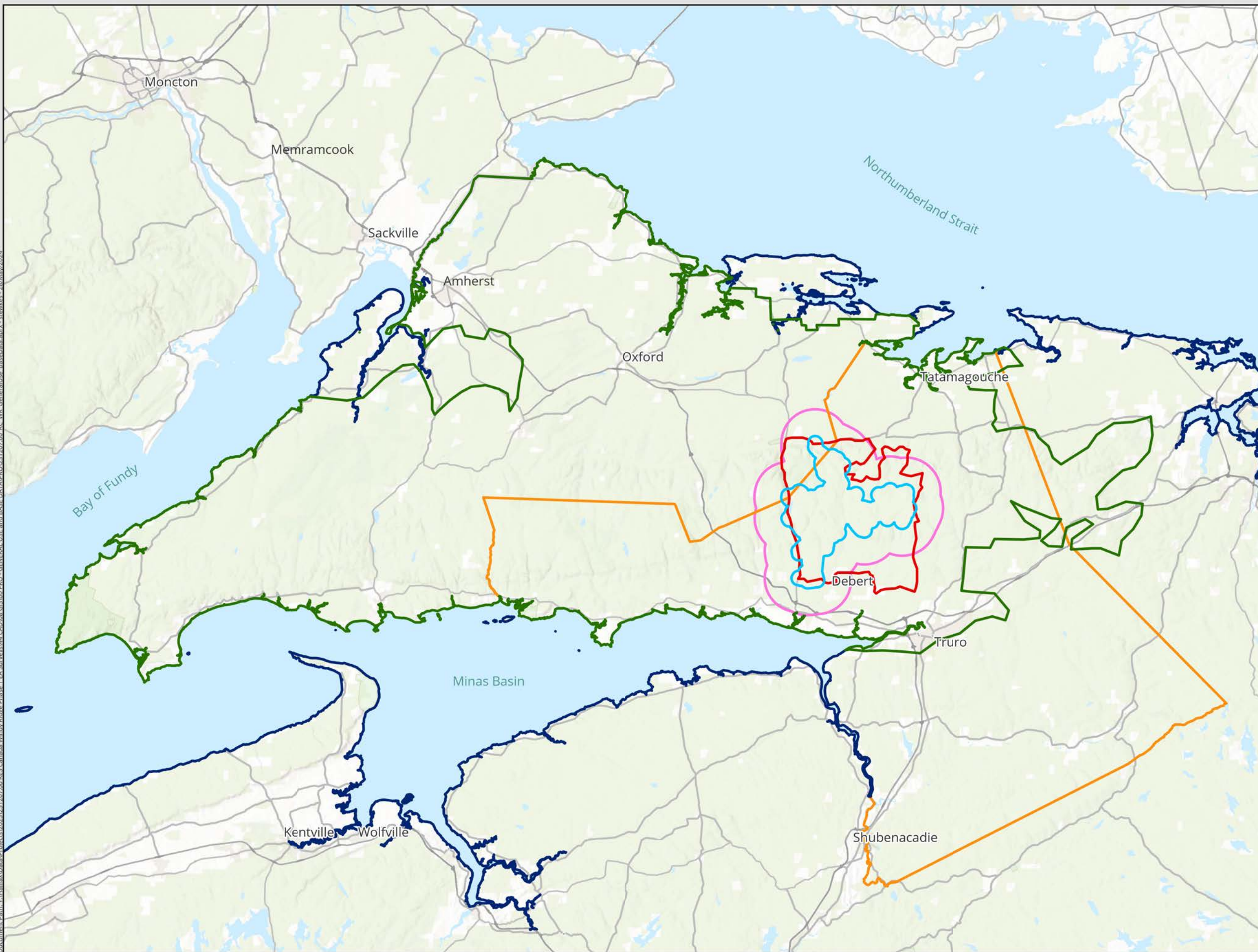
DATE: 2024-03-27	PROJ N°: 231207	FIGURE: 15.1
DRAWN BY: NH	CHECKED BY: NM	APPROVED: LH

NOTES:

0 1,500 3,000 6,000 m

SCALE: 1:135,000 Coordinate System: NAD 1983 UTM Zone 20N
Units: Meter

Document Path: \\HalifaxData\Projects\2023\231707\00\BES_Canada\Windy Ridge Phase 1 EA_Survey\441 CAD\08 GIS\000 PRO - GENERAL USE and BASE DATA\PROV\231707\00_BC_WR_GeneralUse_BaseData.aprx - sfwkes - 28/May/2024



- LEGEND**
-  Wetlands
 -  Flora
 -  Terrestrial Wildlife
 -  Electricity & Other Utilities
 -  Transportation, Population and Economy
 -  Atmospheric Environment, Bats, Birds, Indigenous Cultural Resources, Recreation and Tourism, and Visual Landscape



**WINDY RIDGE
WIND POWER PROJECT**

**Regional Assessment
Areas**

DATE: 2024-05-28	PROJ N°: 231207	FIGURE: 15.2
DRAWN BY: MC	CHECKED BY: NM	APPROVED: NM

NOTES:

0 5,000 10,000 20,000 m

SCALE: 1:544,500 Coordinate System: NAD 1983 UTM Zone 20N
Units: Meter

