

DATA REPORT 7641: Debert, NS

Prepared 9 May 2023

by J. Churchill, Data Manager

CONTENTS OF REPORT

1.0 Preface

1.1 Data List

1.2 Restrictions

1.3 Additional Information

Map 1: Buffered Study Area

2.0 Rare and Endangered Species

2.1 Flora

2.2 Fauna

Map 2: Flora and Fauna

3.0 Special Areas

3.1 Managed Areas

3.2 Significant Areas

Map 3: Special Areas

4.0 Rare Species Lists

4.1 Fauna

4.2 Flora

4.3 Location Sensitive Species

4.4 Source Bibliography

5.0 Rare Species within 100 km

5.1 Source Bibliography



Map 1. A 100 km buffer around the study area

1.0 PREFACE

The Atlantic Canada Conservation Data Centre (AC CDC; www.accdc.com) is part of a network of NatureServe data centres and heritage programs serving 50 states in the U.S.A, 10 provinces and 1 territory in Canada, plus several Central and South American countries. The NatureServe network is more than 30 years old and shares a common conservation data methodology. The AC CDC was founded in 1997, and maintains data for the jurisdictions of New Brunswick, Nova Scotia, Prince Edward Island, and Newfoundland and Labrador. Although a non-governmental agency, the AC CDC is supported by 6 federal agencies and 4 provincial governments, as well as through outside grants and data processing fees.

Upon request and for a fee, the AC CDC queries its database and produces customized reports of the rare and endangered flora and fauna known to occur in or near a specified study area. As a supplement to that data, the AC CDC includes locations of managed areas with some level of protection, and known sites of ecological interest or sensitivity.

1.1 DATA LIST

Included datasets:

Filename

DebertNS_7641ob.xls

DebertNS_7641ob100km.xls

DebertNS_7641msa.xls

DebertNS_7641ff_py.xls

Contents

Rare or legally-protected Flora and Fauna in your study area

A list of Rare and legally protected Flora and Fauna within 100 km of your study area

Managed and Biologically Significant Areas in your study area

Rare Freshwater Fish in your study area (DFO database)

1.2 RESTRICTIONS

The AC CDC makes a strong effort to verify the accuracy of all the data that it manages, but it shall not be held responsible for any inaccuracies in data that it provides. By accepting AC CDC data, recipients assent to the following limits of use:

- a) Data is restricted to use by trained personnel who are sensitive to landowner interests and to potential threats to rare and/or endangered flora and fauna posed by the information provided.
- b) Data is restricted to use by the specified Data User; any third party requiring data must make its own data request.
- c) The AC CDC requires Data Users to cease using and delete data 12 months after receipt, and to make a new request for updated data if necessary at that time.
- d) AC CDC data responses are restricted to the data in our Data System at the time of the data request.
- e) Each record has an estimate of locational uncertainty, which must be referenced in order to understand the record's relevance to a particular location. Please see attached Data Dictionary for details.
- f) AC CDC data responses are not to be construed as exhaustive inventories of taxa in an area.
- g) The absence of a taxon cannot be inferred by its absence in an AC CDC data response.

1.3 ADDITIONAL INFORMATION

The accompanying Data Dictionary provides metadata for the data provided.

Please direct any additional questions about AC CDC data to the following individuals:

Plants, Lichens, Ranking Methods, All other Inquiries

Sean Blaney
Senior Scientist / Executive Director
(506) 364-2658
sean.blaney@accdc.ca

Animals (Fauna)

John Klymko
Zoologist
(506) 364-2660
john.klymko@accdc.ca

Data Management, GIS

James Churchill
Conservation Data Analyst / Field Biologist
(902) 679-6146
james.churchill@accdc.ca

Billing

Jean Breau
Financial Manager / Executive Assistant
(506) 364-2657
jean.breau@accdc.ca

Questions on the biology of Federal Species at Risk can be directed to AC CDC: (506) 364-2658, with questions on Species at Risk regulations to: Samara Eaton, Canadian Wildlife Service (NB and PE): (506) 364-5060 or Julie McKnight, Canadian Wildlife Service (NS): (902) 426-4196.

For provincial information about rare taxa and protected areas, or information about game animals, deer yards, old growth forests, archeological sites, fish habitat etc., in New Brunswick, please contact Hubert Askanas, Energy and Resource Development: (506) 453-5873.

For provincial information about rare taxa and protected areas, or information about game animals, deer yards, old growth forests, archeological sites, fish habitat etc., in Nova Scotia, please contact Donna Hurlburt, NS DLF: (902) 679-6886. To determine if location-sensitive species (section 4.3) occur near your study site please contact a NS DLF Regional Biologist:

Western: Emma Vost
(902) 670-8187
Emma.Vost@novascotia.ca

Western: Sarah Spencer
(902) 541-0081
Sarah.Spencer@novascotia.ca

Central: Shavonne Meyer
(902) 893-0816
Shavonne.Meyer@novascotia.ca

Central: Kimberly George
(902) 890-1046
Kimberly.George@novascotia.ca

Eastern: Harrison Moore
(902) 497-4119
Harrison.Moore@novascotia.ca

Eastern: Maureen Cameron-MacMillan
(902) 295-2554
Maureen.Cameron-MacMillan@novascotia.ca

Eastern: Elizabeth Walsh
(902) 563-3370
Elizabeth.Walsh@novascotia.ca

For provincial information about rare taxa and protected areas, or information about game animals, fish habitat etc., in Prince Edward Island, please contact Garry Gregory, PEI Dept. of Communities, Land and Environment: (902) 569-7595.

2.0 RARE AND ENDANGERED SPECIES

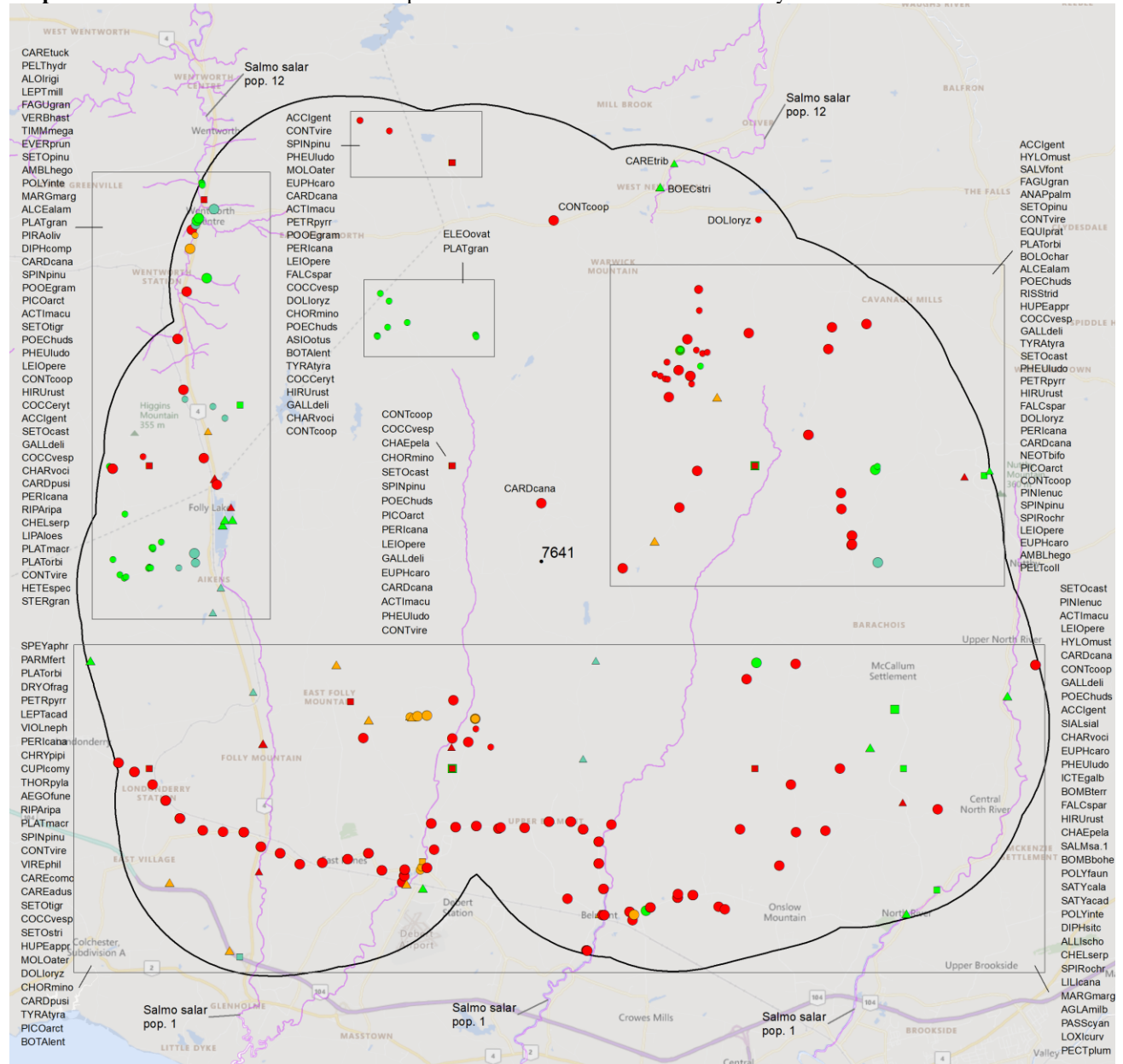
2.1 FLORA

The study area contains 61 records of 22 vascular and 21 records of 12 nonvascular flora (Map 2 and attached: *ob.xls), excluding 'location-sensitive' species.

2.2 FAUNA

The study area contains 663 records of 48 vertebrate and 55 records of 13 invertebrate fauna (Map 2 and attached data files - see 1.1 Data List), excluding 'location-sensitive' species. Please see section 4.3 to determine if 'location-sensitive' species occur near your study site.

Map 2: Known observations of rare and/or protected flora and fauna within the study area.



- RESOLUTION**
- 4.7 within 50s of kilometers
 - 4.0 within 10s of kilometers
 - 3.7 within 5s of kilometers
 - △ 3.0 within kilometers
 - △ 2.7 within 500s of meters
 - ⊙ 2.0 within 100s of meters
 - ⊙ 1.7 within 10s of meters

- HIGHER TAXON**
- vertebrate fauna
 - invertebrate fauna
 - vascular flora
 - nonvascular flora

3.0 SPECIAL AREAS

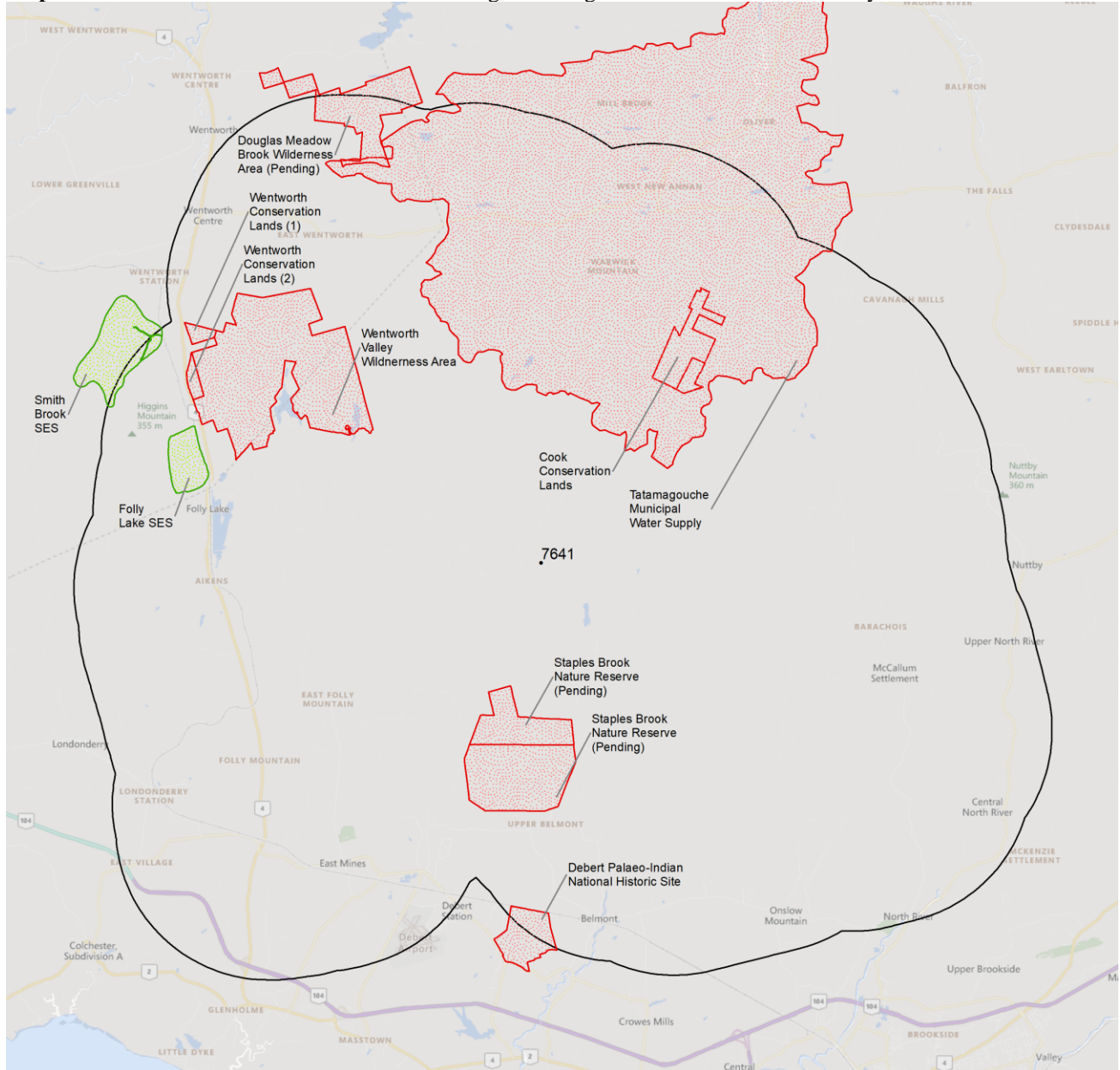
3.1 MANAGED AREAS

The GIS scan identified 10 managed areas in the vicinity of the study area (Map 3 and attached file: *msa.xls).

3.2 SIGNIFICANT AREAS

The GIS scan identified 2 biologically significant sites in the vicinity of the study area (Map 3 and attached file: *msa.xls).

Map 3: Boundaries and/or locations of known Managed and Significant Areas within the study area.



 Managed Area  Significant Area

4.0 RARE SPECIES LISTS

Rare and/or endangered taxa (excluding “location-sensitive” species, section 4.3) within the study area listed in order of concern, beginning with legally listed taxa, with the number of observations per taxon and the distance in kilometers from study area centroid to the closest observation (\pm the precision, in km, of the record). [P] = vascular plant, [N] = nonvascular plant, [A] = vertebrate animal, [I] = invertebrate animal, [C] = community. Note: records are from attached files *ob.xls/*ob.shp only.

4.1 FLORA

	Scientific Name	Common Name	COSEWIC	SARA	Prov Legal Prot	Prov Rarity Rank	# recs	Distance (km)
N	<i>Peltigera hydrothyria</i>	Eastern Waterfan	Threatened	Threatened	Threatened	S1	6	11.4 \pm 0.0
N	<i>Pectenota plumbea</i>	Blue Felt Lichen	Special Concern	Special Concern	Vulnerable	S3	2	16.4 \pm 5.0
N	<i>Aloina rigida</i>	Aloe-Like Rigid Screw Moss				S1?	1	15.9 \pm 0.0
N	<i>Timmia megapolitana</i>	Metropolitan Timmia Moss				S1S2	1	11.5 \pm 0.0
N	<i>Stereocaulon grande</i>	Grand Foam Lichen				S1S3	1	11.0 \pm 0.0
N	<i>Parmelia fertilis</i>	Fertile Shield Lichen				S2S3	1	3.7 \pm 0.0
N	<i>Leptogium milligranum</i>	Stretched Jellyskin Lichen				S3	2	15.9 \pm 0.0
N	<i>Peltigera collina</i>	Tree Pelt Lichen				S3	1	11.1 \pm 0.0
N	<i>Leptogium acadense</i>	Acadian Jellyskin Lichen				S3S4	1	10.5 \pm 0.0
N	<i>Heterodermia speciosa</i>	Powdered Fringe Lichen				S3S4	3	10.6 \pm 0.0
N	<i>Anaptychia palmulata</i>	Shaggy Fringed Lichen				S3S4	1	7.8 \pm 0.0
N	<i>Evermia prunastri</i>	Valley Oakmoss Lichen				S3S4	1	12.0 \pm 0.0
P	<i>Allium schoenoprasum</i>	Wild Chives				S1?	1	11.5 \pm 0.0
P	<i>Lilium canadense</i>	Canada Lily				S2	1	16.7 \pm 1.0
P	<i>Platanthera macrophylla</i>	Large Round-Leaved Orchid				S2	3	10.3 \pm 1.0
P	<i>Boechera stricta</i>	Drummond's Rockcress				S2S3	1	12.9 \pm 1.0
P	<i>Carex adusta</i>	Lesser Brown Sedge				S2S3	1	7.5 \pm 7.0
P	<i>Carex comosa</i>	Bearded Sedge				S2S3	1	7.5 \pm 7.0
P	<i>Eleocharis ovata</i>	Ovate Spikerush				S2S3	1	10.0 \pm 0.0
P	<i>Viola nephrophylla</i>	Northern Bog Violet				S3	1	16.0 \pm 1.0
P	<i>Carex tribuloides</i>	Blunt Broom Sedge				S3	1	13.8 \pm 0.0
P	<i>Carex tuckermanii</i>	Tuckerman's Sedge				S3	3	16.7 \pm 0.0
P	<i>Neottia bifolia</i>	Southern Twayblade				S3	2	11.4 \pm 0.0
P	<i>Platanthera grandiflora</i>	Large Purple Fringed Orchid				S3	22	10.3 \pm 0.0
P	<i>Dryopteris fragrans</i>	Fragrant Wood Fern				S3	3	12.6 \pm 4.0
P	<i>Spiranthes ochroleuca</i>	Yellow Ladies'-tresses				S3?	2	12.0 \pm 0.0
P	<i>Fagus grandifolia</i>	American Beech				S3S4	3	15.1 \pm 0.0
P	<i>Verbena hastata</i>	Blue Vervain				S3S4	1	16.0 \pm 0.0
P	<i>Liparis loeselii</i>	Loesel's Twayblade				S3S4	1	10.5 \pm 1.0
P	<i>Platanthera orbiculata</i>	Small Round-leaved Orchid				S3S4	7	10.6 \pm 3.0
P	<i>Equisetum pratense</i>	Meadow Horsetail				S3S4	1	7.7 \pm 0.0
P	<i>Diphasiastrum complanatum</i>	Northern Ground-cedar				S3S4	1	14.5 \pm 0.0
P	<i>Diphasiastrum sitchense</i>	Sitka Ground-cedar				S3S4	1	17.0 \pm 5.0
P	<i>Huperzia appressa</i>	Mountain Firmoss				S3S4	3	13.8 \pm 5.0

4.2 FAUNA

	Scientific Name	Common Name	COSEWIC	SARA	Prov Legal Prot	Prov Rarity Rank	# recs	Distance (km)
A	<i>Salmo salar pop. 1</i>	Atlantic Salmon - Inner Bay of Fundy population	Endangered	Endangered		S1	3	13.9 \pm 0.0
A	<i>Riparia riparia</i>	Bank Swallow	Threatened	Threatened	Endangered	S2B	13	10.4 \pm 0.0
A	<i>Chaetura pelagica</i>	Chimney Swift	Threatened	Threatened	Endangered	S2S3B,S1M	6	10.8 \pm 0.0
A	<i>Hyllocichla mustelina</i>	Wood Thrush	Threatened	Threatened		SUB	7	11.0 \pm 0.0
A	<i>Euphagus carolinus</i>	Rusty Blackbird	Special Concern	Special Concern	Endangered	S2B	9	12.7 \pm 0.0
A	<i>Chelydra serpentina</i>	Snapping Turtle	Special Concern	Special Concern	Vulnerable	S3	2	11.9 \pm 0.0
A	<i>Hirundo rustica</i>	Barn Swallow	Special Concern	Threatened	Endangered	S3B	73	10.1 \pm 0.0

	Scientific Name	Common Name	COSEWIC	SARA	Prov Legal Prot	Prov Rarity Rank	# recs	Distance (km)
A	<i>Cardellina canadensis</i>	Canada Warbler	Special Concern	Threatened	Endangered	S3B	27	1.9 ± 0.0
A	<i>Chordeiles minor</i>	Common Nighthawk	Special Concern	Threatened	Threatened	S3B	8	11.3 ± 0.0
A	<i>Contopus cooperi</i>	Olive-sided Flycatcher	Special Concern	Threatened	Threatened	S3B	39	10.2 ± 0.0
A	<i>Dolichonyx oryzivorus</i>	Bobolink	Special Concern	Threatened	Vulnerable	S3B	80	11.1 ± 0.0
A	<i>Coccothraustes vespertinus</i>	Evening Grosbeak	Special Concern	Special Concern	Vulnerable	S3B,S3N,S3M	40	10.1 ± 0.0
A	<i>Contopus virens</i>	Eastern Wood-Pewee	Special Concern	Special Concern	Vulnerable	S3S4B	40	10.2 ± 0.0
A	<i>Chrysemys picta picta</i>	Eastern Painted Turtle	Special Concern	Special Concern		S4	5	11.3 ± 0.0
A	<i>Aegolius funereus</i>	Boreal Owl	Not At Risk			S2?B,SUM	2	6.4 ± 0.0
A	<i>Sialia sialis</i>	Eastern Bluebird	Not At Risk			S3B	3	10.2 ± 0.0
A	<i>Accipiter gentilis</i>	Northern Goshawk	Not At Risk			S3S4	6	13.3 ± 7.0
A	<i>Alces alces americana</i>	Moose			Endangered	S1	3	10.4 ± 0.0
A	<i>Passerina cyanea</i>	Indigo Bunting				S1?B,SUM	1	12.9 ± 0.0
A	<i>Poocetes gramineus</i>	Vesper Sparrow				S1S2B,SUM	2	13.3 ± 7.0
A	<i>Vireo philadelphicus</i>	Philadelphia Vireo				S2?B,SUM	2	12.0 ± 0.0
A	<i>Molothrus ater</i>	Brown-headed Cowbird				S2B	3	13.5 ± 7.0
A	<i>Piranga olivacea</i>	Scarlet Tanager				S2B,SUM	2	11.7 ± 0.0
A	<i>Asio otus</i>	Long-eared Owl				S2S3	1	13.5 ± 7.0
A	<i>Rissa tridactyla</i>	Black-legged Kittiwake				S2S3B	1	9.7 ± 0.0
A	<i>Petrochelidon pyrrhonota</i>	Cliff Swallow				S2S3B	6	13.3 ± 0.0
A	<i>Setophaga pinus</i>	Pine Warbler				S2S3B,S4S5M	4	15.9 ± 0.0
A	<i>Icterus galbula</i>	Baltimore Oriole				S2S3B,SUM	1	11.5 ± 0.0
A	<i>Perisoreus canadensis</i>	Canada Jay				S3	24	12.0 ± 0.0
A	<i>Poecile hudsonicus</i>	Boreal Chickadee				S3	23	10.3 ± 0.0
A	<i>Spinus pinus</i>	Pine Siskin				S3	34	10.1 ± 0.0
A	<i>Salvelinus fontinalis</i>	Brook Trout				S3	2	7.3 ± 0.0
A	<i>Charadrius vociferus</i>	Killdeer				S3B	12	10.1 ± 0.0
A	<i>Coccyzus erythrophthalmus</i>	Black-billed Cuckoo				S3B	2	13.3 ± 7.0
A	<i>Tyrannus tyrannus</i>	Eastern Kingbird				S3B	7	12.1 ± 0.0
A	<i>Pheucticus ludovicianus</i>	Rose-breasted Grosbeak				S3B	20	13.2 ± 0.0
A	<i>Falco sparverius</i>	American Kestrel				S3B,S4S5M	13	11.2 ± 0.0
A	<i>Gallinago delicata</i>	Wilson's Snipe				S3B,S5M	33	11.9 ± 0.0
A	<i>Setophaga striata</i>	Blackpoll Warbler				S3B,S5M	2	7.5 ± 7.0
A	<i>Cardellina pusilla</i>	Wilson's Warbler				S3B,S5M	3	13.3 ± 7.0
A	<i>Pinicola enucleator</i>	Pine Grosbeak				S3B,S5N,S5M	2	7.5 ± 7.0
A	<i>Setophaga tigrina</i>	Cape May Warbler				S3B,SUM	9	11.0 ± 0.0
A	<i>Picoides arcticus</i>	Black-backed Woodpecker				S3S4	11	13.3 ± 7.0
A	<i>Loxia curvirostra</i>	Red Crossbill				S3S4	7	12.3 ± 0.0
A	<i>Botaurus lentiginosus</i>	American Bittern				S3S4B,S4S5M	8	13.5 ± 7.0
A	<i>Setophaga castanea</i>	Bay-breasted Warbler				S3S4B,S4S5M	18	11.5 ± 0.0
A	<i>Actitis macularia</i>	Spotted Sandpiper				S3S4B,S5M	13	11.9 ± 0.0
A	<i>Leiothlypis peregrina</i>	Tennessee Warbler				S3S4B,S5M	31	10.1 ± 0.0
I	<i>Bombus bohemicus</i>	Ashton Cuckoo Bumble Bee	Endangered	Endangered	Endangered	S1	5	10.7 ± 5.0
I	<i>Bombus terricola</i>	Yellow-banded Bumble Bee	Special Concern	Special Concern	Vulnerable	S3	3	10.7 ± 5.0
I	<i>Boloria chariclea</i>	Arctic Fritillary				S1S2	1	7.9 ± 2.0
I	<i>Satyrnum acadica</i>	Acadian Hairstreak				S2	4	11.5 ± 2.0
I	<i>Margaritifera margaritifera</i>	Eastern Pearlshell				S2	4	12.1 ± 0.0
I	<i>Aglais milberti</i>	Milbert's Tortoiseshell				S2S3	5	11.5 ± 2.0
I	<i>Satyrnum calanus</i>	Banded Hairstreak				S3	1	11.5 ± 2.0
I	<i>Polygonia interrogationis</i>	Question Mark				S3B	7	10.9 ± 0.0
I	<i>Cecropterus pylades</i>	Northern Cloudywing				S3S4	4	10.8 ± 0.0
I	<i>Amblyscirtes hegon</i>	Pepper and Salt Skipper				S3S4	2	11.8 ± 0.0
I	<i>Cupido comyntas</i>	Eastern Tailed Blue				S3S4	2	5.6 ± 0.0

	Scientific Name	Common Name	COSEWIC	SARA	Prov Legal Prot	Prov Rarity Rank	# recs	Distance (km)
1	<i>Argynnis aphrodite</i>	Aphrodite Fritillary				S3S4	16	5.6 ± 0.0
1	<i>Polygonia faunus</i>	Green Comma				S3S4	1	16.2 ± 2.0

4.3 LOCATION SENSITIVE SPECIES

The Department of Natural Resources in each Maritimes province considers a number of species “location sensitive”. Concern about exploitation of location-sensitive species precludes inclusion of precise coordinates in this report. Those intersecting your study area are indicated below with “YES”.

Nova Scotia

Scientific Name	Common Name	SARA	Prov Legal Prot	Known within the Study Site?
<i>Fraxinus nigra</i>	Black Ash		Threatened	YES
<i>Emydoidea blandingii</i>	Blanding's Turtle - Nova Scotia pop.	Endangered	Endangered	YES
<i>Glyptemys insculpta</i>	Wood Turtle	Threatened	Threatened	No
<i>Falco peregrinus pop. 1</i>	Peregrine Falcon - anatum/tundrius pop.		Vulnerable	No
<i>Bat hibernaculum</i> or bat species occurrence		[Endangered] ¹	[Endangered] ¹	No

¹ *Myotis lucifugus* (Little Brown Myotis), *Myotis septentrionalis* (Long-eared Myotis), and *Perimyotis subflavus* (Tri-colored Bat or Eastern Pipistrelle) are all Endangered under the Federal Species at Risk Act and the NS Endangered Species Act.

4.4 SOURCE BIBLIOGRAPHY

The recipient of these data shall acknowledge the AC CDC and the data sources listed below in any documents, reports, publications or presentations, in which this dataset makes a significant contribution.

# recs	CITATION
268	Lepage, D. 2014. Maritime Breeding Bird Atlas Database. Bird Studies Canada, Sackville NB, 407,838 recs.
258	Pardieck, K.L., Ziolkowski Jr., D.J., Lutmerding, M., Aponte, V.I., and Hudson, M-A.R. 2020. North American Breeding Bird Survey Dataset 1966 - 2019: U.S. Geological Survey data release, https://doi.org/10.5066/P9J6QUF6
94	Erskine, A.J. 1992. Maritime Breeding Bird Atlas Database. NS Museum & Nimbus Publ., Halifax, 82,125 recs.
25	Klymko, J. 2018. Maritimes Butterfly Atlas database. Atlantic Canada Conservation Data Centre.
23	Bryson, I. 2013. Nova Scotia rare plant records. CBCL Ltd., 180 records.
12	Newell, R.E. 2000. E.C. Smith Herbarium Database. Acadia University, Wolfville NS, 7139 recs.
9	iNaturalist. 2020. iNaturalist Data Export 2020. iNaturalist.org and iNaturalist.ca, Web site: 128728 recs.
9	Nussey, Pat & NCC staff. 2019. AEI tracked species records, 2016-2019. Chapman, C.J. (ed.) Atlantic Canada Conservation Data Centre, 333.
8	Richardson, Leif. 2018. Maritimes Bombus records from various sources. Richardson, Leif.
7	Benjamin, L.K. (compiler). 2007. Significant Habitat & Species Database. Nova Scotia Dept Natural Resources, 8439 recs.
6	Belliveau, A.G. 2018. Atlantic Canada Conservation Data Centre Fieldwork 2017. Atlantic Canada Conservation Data Centre.
6	Cameron, R.P. 2013. 2013 rare species field data. Nova Scotia Department of Environment, 71 recs.
6	Clayden, S. Digitization of Wolfgang Maass Nova Scotia forest lichen collections, 1964-2004. New Brunswick Museum. 2018.
6	Ogden, J. NS DNR Butterfly Collection Dataset. Nova Scotia Department of Natural Resources. 2014.
6	Scott, F.W. 2002. Nova Scotia Herpetofauna Atlas Database. Acadia University, Wolfville NS, 8856 recs.
5	Canadian Wildlife Service. 2019. Canadian Protected and Conserved Areas Database (CPCAD). December 2019. ECCC. https://www.canada.ca/en/environment-climate-change/services/national-wildlife-areas/protected-conserved-areas-database.html .
5	eBird. 2020. eBird Basic Dataset. Version: EBD_relNov-2019. Ithaca, New York. Nov 2019, Cape Breton Bras d'Or Lakes Watershed subset. Cornell Lab of Ornithology.
5	Walker, J. 2017. Bird inventories at French River, NS, and Memramcook, NB, for Nature Conservancy of Canada. Pers. comm. to AC CDC.
4	Amiro, P.G. 1998. Atlantic Salmon Inner Bay of Fundy SFA 22 & part of 23. DFO Sci. SSR D3-12.
4	Newell, R.E. 2005. E.C. Smith Digital Herbarium. E.C. Smith Herbarium, Irving Biodiversity Collection, Acadia University, Web site: http://luxor.acadiau.ca/library/Herbarium/project/ . 582 recs.
4	Webster, R.P. Atlantic Forestry Centre Insect Collection, Maritimes butterfly records. Natural Resources Canada. 2014.
3	Belliveau, A.G. 2018. E.C. Smith Herbarium and Atlantic Canada Conservation Data Centre Fieldwork 2018. E.C. Smith Herbarium, 6226 recs.
3	Blaney, C.S.; Mazerolle, D.M.; Oberndorfer, E. 2007. Fieldwork 2007. Atlantic Canada Conservation Data Centre. Sackville NB, 13770 recs.
3	Chapman, C.J. 2018. Atlantic Canada Conservation Data Centre botanical fieldwork 2018. Atlantic Canada Conservation Data Centre, 11171 recs.
3	e-Butterfly. 2016. Export of Maritimes records and photos. Maxim Larrivee, Sambo Zhang (ed.) e-butterfly.org.
3	Klymko, J. Dataset of butterfly records at the New Brunswick Museum not yet accessioned by the museum. Atlantic Canada Conservation Data Centre. 2016.
3	Munro, Marian K. Tracked lichen specimens, Nova Scotia Provincial Museum of Natural History Herbarium. Atlantic Canada Conservation Data Centre. 2019.
3	Nova Scotia Department of Lands and Forestry. 2020. NS Lands Proposed or Pending Protection. NSDLF, 231 features. Received via email.

# recs	CITATION
3	Patrick, Allison. 2021. Animal and plant records from NCC properties from 2019 and 2020. Nature Conservancy Canada.
3	Pronych, G. & Wilson, A. 1993. Atlas of Rare Vascular Plants in Nova Scotia. Nova Scotia Museum, Halifax NS, I:1-168, II:169-331. 1446 recs.
3	Zinck, M. & Roland, A.E. 1998. Roland's Flora of Nova Scotia. Nova Scotia Museum, 3rd ed., rev. M. Zinck; 2 Vol., 1297 pp.
2	Benjamin, L.K. (compiler). 2012. Significant Habitat & Species Database. Nova Scotia Dept Natural Resources, 4965 recs.
2	iNaturalist. 2018. iNaturalist Data Export 2018. iNaturalist.org and iNaturalist.ca, Web site: 11700 recs.
1	Amirault, D.L. 1995. Atlantic Canada Conservation Area Database (ARCAD). Canadian Wildlife Service, Sackville.
1	Bagnell, B.A. 2001. New Brunswick Bryophyte Occurrences. B&B Botanical, Sussex, 478 recs.
1	COSEWIC (Committee on the Status of Wildlife in Canada). 2013. COSEWIC Assessment and Status Report on the Eastern Waterfan Peltigera hydrothyria in Canada. COSEWIC, 46 pp.
1	Downes, C. 1998-2000. Breeding Bird Survey Data. Canadian Wildlife Service, Ottawa, 111 recs.
1	Ferguson, D.C. 1954. The Lepidoptera of Nova Scotia. Part I, macrolepidoptera. Proceedings of the Nova Scotian Institute of Science, 23(3), 161-375.
1	Hall, R.A. 2001. S. NS Freshwater Mussel Fieldwork. Nova Scotia Dept Natural Resources, 178 recs.
1	Hall, R.A. 2003. NS Freshwater Mussel Fieldwork. Nova Scotia Dept Natural Resources, 189 recs.
1	LaPaix, Rich. 2022. Rare species observations, 2018-2022. Nova Scotia Nature Trust.
1	Layberry, R.A. & Hall, P.W., LaFontaine, J.D. 1998. The Butterflies of Canada. University of Toronto Press. 280 pp+plates.
1	Munro, Marian K. Nova Scotia Provincial Museum of Natural History Herbarium Database. Nova Scotia Provincial Museum of Natural History, Halifax, Nova Scotia. 2014.
1	Neily, T.H. & Pepper, C.; Toms, B. 2020. Nova Scotia lichen database [as of 2020-03-18]. Mersey Tobeatic Research Institute.
1	Nova Scotia Dept Natural Resources, Forestry Branch. 2007. Restricted & Limited Use Land Database (RLUL). , http://www.gov.ns.ca/natr/FORESTRY/rlul/downloadrlul.htm .
1	Toms, Brad & Pepper, Chris; Neily, Tom. 2022. Nova Scotia lichen database [as of 2022-04]. Mersey Tobeatic Research Institute.
1	Wilson, G. 2013. 2013 Snapping Turtle email report, Wentworth, NS. Pers. comm.

5.0 RARE SPECIES WITHIN 100 KM

A 100 km buffer around the study area contains 52961 records of 145 vertebrate and 1477 records of 71 invertebrate fauna; 8103 records of 275 vascular and 2601 records of 170 nonvascular flora (attached: *ob100km.xls).

Taxa within 100 km of the study site that are rare and/or endangered in the province in which the study site occurs (including “location-sensitive” species). All ranks correspond to the province in which the study site falls, even for out-of-province records. Taxa are listed in order of concern, beginning with legally listed taxa, with the number of observations per taxon and the distance in kilometers from study area centroid to the closest observation (\pm the precision, in km, of the record).

Taxonomic Group	Scientific Name	Common Name	COSEWIC	SARA	Prov Legal Prot	Prov Rarity Rank	# recs	Distance (km)	Prov
A	<i>Coregonus huntsmani</i>	Atlantic Whitefish	Endangered	Endangered	Endangered	S1	1	92.5 \pm 1.0	NS
A	<i>Myotis lucifugus</i>	Little Brown Myotis	Endangered	Endangered	Endangered	S1	130	17.6 \pm 0.0	NS
A	<i>Myotis septentrionalis</i>	Northern Myotis	Endangered	Endangered	Endangered	S1	85	19.9 \pm 0.0	NS
A	<i>Perimyotis subflavus</i>	Tricolored Bat	Endangered	Endangered	Endangered	S1	10	30.7 \pm 5.0	NS
A	<i>Salmo salar pop. 1</i>	Atlantic Salmon - Inner Bay of Fundy population	Endangered	Endangered		S1	39	6.8 \pm 0.0	NS
A	<i>Salmo salar pop. 6</i>	Atlantic Salmon - Nova Scotia Southern Upland population	Endangered			S1	26	64.1 \pm 0.0	NS
A	<i>Charadrius melodus melodus</i>	Piping Plover melodus subspecies	Endangered	Endangered	Endangered	S1B	931	31.8 \pm 0.0	NS
A	<i>Sterna dougallii</i>	Roseate Tern	Endangered	Endangered	Endangered	S1B	4	96.0 \pm 0.0	NS
A	<i>Dermodochelys coriacea pop. 2</i>	Leatherback Sea Turtle - Atlantic population	Endangered	Endangered		S1S2N	2	76.2 \pm 1.0	NB
A	<i>Morone saxatilis pop. 2</i>	Striped Bass - Bay of Fundy population	Endangered			S2S3B,S2S3N	4	58.7 \pm 0.0	NS
A	<i>Catharus bicknelli</i>	Bicknell's Thrush	Threatened	Threatened	Endangered	S1B	1	54.3 \pm 7.0	NS
A	<i>Asio flammeus</i>	Short-eared Owl	Threatened	Special Concern		S1B	43	33.3 \pm 7.0	NS
A	<i>Glyptemys insculpta</i>	Wood Turtle	Threatened	Threatened	Threatened	S2	1205	11.3 \pm 5.0	NS
A	<i>Riparia riparia</i>	Bank Swallow	Threatened	Threatened	Endangered	S2B	2595	7.5 \pm 7.0	NS
A	<i>Chaetura pelagica</i>	Chimney Swift	Threatened	Threatened	Endangered	S2S3B,S1M	1281	4.3 \pm 7.0	NS
A	<i>Limosa haemastica</i>	Hudsonian Godwit	Threatened			S2S3M	241	19.7 \pm 0.0	NS
A	<i>Acipenser oxyrinchus</i>	Atlantic Sturgeon	Threatened			S2S3N	7	44.6 \pm 0.0	NS
A	<i>Hydrobates leucorhous</i>	Leach's Storm-Petrel	Threatened			S3B	3	96.3 \pm 0.0	NS
A	<i>Tringa flavipes</i>	Lesser Yellowlegs	Threatened			S3M	1743	18.3 \pm 0.0	NS

Taxonomic Group	Scientific Name	Common Name	COSEWIC	SARA	Prov Legal Prot	Prov Rarity Rank	# recs	Distance (km)	Prov
A	<i>Anguilla rostrata</i>	American Eel	Threatened			S3N	52	15.9 ± 0.0	NS
A	<i>Sturnella magna</i>	Eastern Meadowlark	Threatened	Threatened		SHB	4	78.5 ± 7.0	NS
A	<i>Ixobrychus exilis</i>	Least Bittern	Threatened	Threatened		SUB	9	70.3 ± 0.0	NS
A	<i>Hylocichla mustelina</i>	Wood Thrush	Threatened	Threatened		SUB	51	7.7 ± 7.0	NS
A	<i>Salmo salar pop. 12</i>	Atlantic Salmon - Gaspé - Southern Gulf of St. Lawrence population	Special Concern			S1	33	15.8 ± 1.0	NS
A	<i>Antrostomus vociferus</i>	Eastern Whip-Poor-Will	Special Concern	Threatened	Threatened	S1?B	11	40.3 ± 7.0	NS
A	<i>Passerculus sandwichensis princeps</i>	Ipswich Sparrow	Special Concern	Special Concern		S1B	2	98.0 ± 0.0	NS
A	<i>Bucephala islandica</i>	Barrow's Goldeneye	Special Concern	Special Concern		S1N,SUM	20	43.7 ± 1.0	NS
A	<i>Euphagus carolinus</i>	Rusty Blackbird	Special Concern	Special Concern	Endangered	S2B	236	2.7 ± 0.0	NS
A	<i>Phalaropus lobatus</i>	Red-necked Phalarope	Special Concern	Special Concern		S2S3M	13	19.7 ± 0.0	NS
A	<i>Histrionicus histrionicus pop. 1</i>	Harlequin Duck - Eastern population	Special Concern	Special Concern	Endangered	S2S3N,SUM	4	87.6 ± 0.0	NS
A	<i>Chelydra serpentina</i>	Snapping Turtle	Special Concern	Special Concern	Vulnerable	S3	124	11.9 ± 0.0	NS
A	<i>Hirundo rustica</i>	Barn Swallow	Special Concern	Threatened	Endangered	S3B	1810	7.5 ± 7.0	NS
A	<i>Cardellina canadensis</i>	Canada Warbler	Special Concern	Threatened	Endangered	S3B	1202	1.9 ± 0.0	NS
A	<i>Chordeiles minor</i>	Common Nighthawk	Special Concern	Threatened	Threatened	S3B	468	4.3 ± 7.0	NS
A	<i>Contopus cooperi</i>	Olive-sided Flycatcher	Special Concern	Threatened	Threatened	S3B	1064	4.3 ± 7.0	NS
A	<i>Dolichonyx oryzivorus</i>	Bobolink	Special Concern	Threatened	Vulnerable	S3B	2049	7.5 ± 7.0	NS
A	<i>Coccothraustes vespertinus</i>	Evening Grosbeak	Special Concern	Special Concern	Vulnerable	S3B,S3N,S3M	739	4.3 ± 7.0	NS
A	<i>Podiceps auritus</i>	Horned Grebe	Special Concern	Special Concern		S3N,SUM	14	72.8 ± 0.0	NB
A	<i>Contopus virens</i>	Eastern Wood-Pewee	Special Concern	Special Concern	Vulnerable	S3S4B	1209	4.3 ± 7.0	NS
A	<i>Phocoena phocoena</i>	Harbour Porpoise	Special Concern			S4	2	96.2 ± 0.0	NB
A	<i>Chrysemys picta picta</i>	Eastern Painted Turtle	Special Concern	Special Concern		S4	149	7.8 ± 5.0	NS
A	<i>Accipiter cooperii</i>	Cooper's Hawk	Not At Risk			S1?B,SUN,SUM	6	47.1 ± 7.0	NS
A	<i>Fulica americana</i>	American Coot	Not At Risk			S1B	48	35.3 ± 0.0	NS
A	<i>Chlidonias niger</i>	Black Tern	Not At Risk			S1B	178	70.2 ± 0.0	NS
A	<i>Falco peregrinus pop. 1</i>	Peregrine Falcon - anatum/tundrius	Not At Risk	Special Concern	Vulnerable	S1B,SUM	205	55.3 ± 0.0	NS
A	<i>Sorex dispar</i>	Long-tailed Shrew	Not At Risk			S2	2	25.3 ± 0.0	NS
A	<i>Aegolius funereus</i>	Boreal Owl	Not At Risk			S2?B,SUM	9	6.4 ± 0.0	NS
A	<i>Lynx canadensis</i>	Canada Lynx	Not At Risk		Endangered	S2S3	2	97.8 ± 1.0	NB
A	<i>Globicephala melas</i>	Long-finned Pilot Whale	Not At Risk			S2S3	2	67.0 ± 100.0	NS
A	<i>Hemidactylium scutatum</i>	Four-toed Salamander	Not At Risk			S3	25	24.0 ± 0.0	NS
A	<i>Megaptera novaeangliae</i>	Humpback Whale	Not At Risk			S3	1	76.7 ± 0.0	NS
A	<i>Sterna hirundo</i>	Common Tern	Not At Risk			S3B	380	21.2 ± 0.0	NS
A	<i>Sialia sialis</i>	Eastern Bluebird	Not At Risk			S3B	110	7.5 ± 7.0	NS
A	<i>Buteo lagopus</i>	Rough-legged Hawk	Not At Risk			S3N	13	75.8 ± 1.0	NB
A	<i>Accipiter gentilis</i>	Northern Goshawk	Not At Risk			S3S4	171	9.4 ± 0.0	NS
A	<i>Glaucomys volans</i>	Southern Flying Squirrel	Not At Risk			S3S4	6	86.6 ± 10.0	NS
A	<i>Lagenorhynchus acutus</i>	Atlantic White-sided Dolphin	Not At Risk			S3S4	3	40.4 ± 0.0	NS
A	<i>Ammospiza nelsoni</i>	Nelson's Sparrow	Not At Risk			S3S4B	912	18.3 ± 7.0	NS
A	<i>Calidris canutus rufa</i>	Red Knot rufa subspecies	E,SC	Endangered	Endangered	S2M	630	18.3 ± 0.0	NS
A	<i>Morone saxatilis</i>	Striped Bass	E,SC			S2S3B,S2S3N	6	36.5 ± 0.0	NS
A	<i>Alces alces americana</i>	Moose			Endangered	S1	210	6.9 ± 0.0	NS
A	<i>Picoides dorsalis</i>	American Three-toed Woodpecker				S1?	4	47.6 ± 0.0	NS
A	<i>Uria aalge</i>	Common Murre				S1?B	1	98.4 ± 0.0	NS
A	<i>Passerina cyanea</i>	Indigo Bunting				S1?B,SUM	24	12.9 ± 0.0	NS
A	<i>Nycticorax nycticorax</i>	Black-crowned Night-heron				S1B	2	82.4 ± 1.0	NB
A	<i>Oxyura jamaicensis</i>	Ruddy Duck				S1B	55	69.9 ± 1.0	NB
A	<i>Gallinula galeata</i>	Common Gallinule				S1B	39	22.1 ± 7.0	NS
A	<i>Myiarchus crinitus</i>	Great Crested Flycatcher				S1B	30	21.5 ± 7.0	NS
A	<i>Cistothorus palustris</i>	Marsh Wren				S1B	51	69.6 ± 3.0	NB
A	<i>Mimus polyglottos</i>	Northern Mockingbird				S1B	88	26.5 ± 7.0	NS
A	<i>Toxostoma rufum</i>	Brown Thrasher				S1B	13	17.0 ± 0.0	NS

Taxonomic Group	Scientific Name	Common Name	COSEWIC	SARA	Prov Legal Prot	Prov Rarity Rank	# recs	Distance (km)	Prov
A	<i>Charadrius semipalmatus</i>	Semipalmated Plover				S1B,S4M	2172	18.3 ± 0.0	NS
A	<i>Calidris minutilla</i>	Least Sandpiper				S1B,S4M	1437	18.3 ± 0.0	NS
A	<i>Anas acuta</i>	Northern Pintail				S1B,SUM	122	17.1 ± 7.0	NS
A	<i>Vireo gilvus</i>	Warbling Vireo				S1B,SUM	38	14.9 ± 7.0	NS
A	<i>Vespertilionidae sp.</i>	bat species				S1S2	138	17.0 ± 0.0	NS
A	<i>Poocetes gramineus</i>	Vesper Sparrow				S1S2B,SUM	77	13.3 ± 7.0	NS
A	<i>Vireo philadelphicus</i>	Philadelphia Vireo				S2?B,SUM	112	9.8 ± 7.0	NS
A	<i>Fratercula arctica</i>	Atlantic Puffin				S2B	1	72.6 ± 0.0	NB
A	<i>Empidonax traillii</i>	Willow Flycatcher				S2B	50	21.5 ± 7.0	NS
A	<i>Molothrus ater</i>	Brown-headed Cowbird				S2B	222	7.5 ± 7.0	NS
A	<i>Spatula clypeata</i>	Northern Shoveler				S2B,SUM	240	19.5 ± 0.0	NS
A	<i>Mareca strepera</i>	Gadwall				S2B,SUM	320	24.2 ± 7.0	NS
A	<i>Piranga olivacea</i>	Scarlet Tanager				S2B,SUM	29	11.7 ± 0.0	NS
A	<i>Calidris alba</i>	Sanderling				S2N,S3M	1538	18.3 ± 0.0	NS
A	<i>Asio otus</i>	Long-eared Owl				S2S3	31	13.5 ± 7.0	NS
A	<i>Rallus limicola</i>	Virginia Rail				S2S3B	261	19.6 ± 0.0	NS
A	<i>Rissa tridactyla</i>	Black-legged Kittiwake				S2S3B	1	9.7 ± 0.0	NS
A	<i>Petrochelidon pyrrhonota</i>	Cliff Swallow				S2S3B	471	7.7 ± 7.0	NS
A	<i>Phalacrocorax carbo</i>	Great Cormorant				S2S3B,S2S3N	93	63.8 ± 7.0	PE
A	<i>Cathartes aura</i>	Turkey Vulture				S2S3B,S4S5M	55	56.4 ± 0.0	NS
A	<i>Setophaga pinus</i>	Pine Warbler				S2S3B,S4S5M	50	7.8 ± 0.0	NS
A	<i>Bucephala clangula</i>	Common Goldeneye				S2S3B,S5N,S5M	156	27.4 ± 5.0	NS
A	<i>Icterus galbula</i>	Baltimore Oriole				S2S3B,SUM	80	11.5 ± 0.0	NS
A	<i>Pluvialis dominica</i>	American Golden-Plover				S2S3M	194	24.2 ± 0.0	NS
A	<i>Numenius phaeopus hudsonicus</i>	Whimbrel				S2S3M	244	30.9 ± 0.0	NS
A	<i>Phalaropus fulicarius</i>	Red Phalarope				S2S3M	3	97.1 ± 0.0	NS
A	<i>Perisoreus canadensis</i>	Canada Jay				S3	648	4.3 ± 7.0	NS
A	<i>Poecile hudsonicus</i>	Boreal Chickadee				S3	760	4.3 ± 7.0	NS
A	<i>Spinus pinus</i>	Pine Siskin				S3	535	4.3 ± 7.0	NS
A	<i>Salvelinus fontinalis</i>	Brook Trout				S3	60	7.3 ± 0.0	NS
A	<i>Salvelinus namaycush</i>	Lake Trout				S3	2	68.4 ± 0.0	NS
A	<i>Sorex maritimensis</i>	Maritime Shrew				S3	105	81.5 ± 1.0	NB
A	<i>Synaptomys cooperi</i>	Southern Bog Lemming				S3	1	83.4 ± 0.0	NS
A	<i>Pekania pennanti</i>	Fisher				S3	6	28.9 ± 0.0	NS
A	<i>Calcarius lapponicus</i>	Lapland Longspur				S3?N,SUM	33	72.8 ± 0.0	NB
A	<i>Spatula discors</i>	Blue-winged Teal				S3B	520	17.1 ± 7.0	NS
A	<i>Charadrius vociferus</i>	Killdeer				S3B	1038	7.5 ± 7.0	NS
A	<i>Tringa semipalmata</i>	Willet				S3B	1497	20.1 ± 0.0	NS
A	<i>Sterna paradisaea</i>	Arctic Tern				S3B	12	74.2 ± 0.0	NB
A	<i>Coccyzus erythrophthalmus</i>	Black-billed Cuckoo				S3B	134	13.3 ± 7.0	NS
A	<i>Tyrannus tyrannus</i>	Eastern Kingbird				S3B	469	7.5 ± 7.0	NS
A	<i>Pheucticus ludovicianus</i>	Rose-breasted Grosbeak				S3B	719	4.3 ± 7.0	NS
A	<i>Alosa pseudoharengus</i>	Alewife				S3B	31	25.1 ± 0.0	NS
A	<i>Somateria mollissima</i>	Common Eider				S3B,S3M,S3N	187	28.5 ± 9.0	NS
A	<i>Tringa melanoleuca</i>	Greater Yellowlegs				S3B,S4M	2746	24.2 ± 0.0	NS
A	<i>Falco sparverius</i>	American Kestrel				S3B,S4S5M	617	7.5 ± 7.0	NS
A	<i>Gallinago delicata</i>	Wilson's Snipe				S3B,S5M	1401	4.3 ± 7.0	NS
A	<i>Setophaga striata</i>	Blackpoll Warbler				S3B,S5M	103	7.5 ± 7.0	NS
A	<i>Cardellina pusilla</i>	Wilson's Warbler				S3B,S5M	126	7.5 ± 7.0	NS
A	<i>Pinicola enucleator</i>	Pine Grosbeak				S3B,S5N,S5M	128	7.5 ± 7.0	NS
A	<i>Setophaga tigrina</i>	Cape May Warbler				S3B,SUM	343	7.5 ± 7.0	NS
A	<i>Branta bernicla</i>	Brant				S3M	14	50.9 ± 0.0	NS
A	<i>Pluvialis squatarola</i>	Black-bellied Plover				S3M	2193	18.3 ± 0.0	NS
A	<i>Arenaria interpres</i>	Ruddy Turnstone				S3M	761	19.8 ± 0.0	NS
A	<i>Calidris pusilla</i>	Semipalmated Sandpiper				S3M	2535	18.3 ± 0.0	NS
A	<i>Calidris melanotos</i>	Pectoral Sandpiper				S3M	425	24.3 ± 0.0	NS
A	<i>Limnodromus griseus</i>	Short-billed Dowitcher				S3M	1567	18.3 ± 0.0	NS

Taxonomic Group	Scientific Name	Common Name	COSEWIC	SARA	Prov Legal Prot	Prov Rarity Rank	# recs	Distance (km)	Prov
A	<i>Chroicocephalus ridibundus</i>	Black-headed Gull				S3N	10	69.6 ± 4.0	NB
A	<i>Picoides arcticus</i>	Black-backed Woodpecker				S3S4	185	4.3 ± 7.0	NS
A	<i>Loxia curvirostra</i>	Red Crossbill				S3S4	174	6.6 ± 0.0	NS
A	<i>Sorex palustris</i>	American Water Shrew				S3S4	3	78.5 ± 0.0	PE
A	<i>Botaurus lentiginosus</i>	American Bittern				S3S4B,S4S5M	1026	7.5 ± 7.0	NS
A	<i>Setophaga castanea</i>	Bay-breasted Warbler				S3S4B,S4S5M	722	4.3 ± 7.0	NS
A	<i>Actitis macularius</i>	Spotted Sandpiper				S3S4B,S5M	1056	4.3 ± 7.0	NS
A	<i>Leiothlypis peregrina</i>	Tennessee Warbler				S3S4B,S5M	666	4.3 ± 7.0	NS
A	<i>Passerella iliaca</i>	Fox Sparrow				S3S4B,S5M	40	28.5 ± 7.0	NS
A	<i>Mergus serrator</i>	Red-breasted Merganser				S3S4B,S5M,S5N	176	19.3 ± 0.0	NS
A	<i>Calidris maritima</i>	Purple Sandpiper				S3S4N	79	58.5 ± 0.0	NS
A	<i>Lanius borealis</i>	Northern Shrike				S3S4N	5	72.9 ± 0.0	NS
A	<i>Morus bassanus</i>	Northern Gannet				SHB	66	37.9 ± 4.0	NS
A	<i>Aythya americana</i>	Redhead				SHB	8	71.2 ± 7.0	NS
A	<i>Leucophaeus atricilla</i>	Laughing Gull				SHB	10	72.4 ± 0.0	NB
A	<i>Progne subis</i>	Purple Martin				SHB	24	40.3 ± 7.0	NS
A	<i>Eremophila alpestris</i>	Horned Lark				SHB,S4S5N,S5M	18	21.3 ± 7.0	NS
I	<i>Bombus bohemicus</i>	Ashton Cuckoo Bumble Bee	Endangered	Endangered	Endangered	S1	38	10.7 ± 5.0	NS
I	<i>Danaus plexippus</i>	Monarch	Endangered	Special Concern	Endangered	S2?B,S3M	294	15.5 ± 0.0	NS
I	<i>Danaus plexippus plexippus</i>	Monarch	Endangered	Special Concern		S2?B,S3M	1	78.7 ± 0.0	NS
I	<i>Barnea truncata</i>	Atlantic Mud-piddock	Threatened	Threatened		S1	1	32.5 ± 1.0	NS
I	<i>Bombus suckleyi</i>	Suckley's Cuckoo Bumble Bee	Threatened			SH	1	20.9 ± 5.0	NS
I	<i>Alasmodonta varicosa</i>	Brook Floater	Special Concern	Special Concern	Threatened	S3	13	18.9 ± 0.0	NS
I	<i>Bombus terricola</i>	Yellow-banded Bumble Bee	Special Concern	Special Concern	Vulnerable	S3	114	10.7 ± 5.0	NS
I	<i>Coccinella transversoguttata richardsoni</i>	Transverse Lady Beetle	Special Concern		Endangered	SH	9	15.8 ± 2.0	NS
I	<i>Gomphurus ventricosus</i>	Skillet Clubtail	Special Concern	Endangered		SH	2	67.1 ± 0.0	NS
I	<i>Cicindela formosa</i>	Big Sand Tiger Beetle				S1	1	98.2 ± 1.0	NS
I	<i>Erora laeta</i>	Early Hairstreak				S1	1	76.0 ± 0.0	PE
I	<i>Pachydiplax longipennis</i>	Blue Dasher				S1	4	92.7 ± 0.0	NS
I	<i>Atlanticoncha ochracea</i>	Tidewater Mucket				S1	28	59.6 ± 0.0	NS
I	<i>Polygonia comma</i>	Eastern Comma				S1?	4	88.8 ± 0.0	NS
I	<i>Polygonia satyrus</i>	Satyr Comma				S1?	18	22.1 ± 5.0	NS
I	<i>Euphyes bimacula</i>	Two-spotted Skipper				S1S2	3	71.3 ± 0.0	NS
I	<i>Boloria chariclea</i>	Arctic Fritillary				S1S2	10	7.9 ± 2.0	NS
I	<i>Somatochlora brevicincta</i>	Quebec Emerald				S1S2	2	72.6 ± 1.0	NS
I	<i>Tharsalea dospassosi</i>	Maritime Copper				S2	91	24.4 ± 0.0	NS
I	<i>Satyrrium acadica</i>	Acadian Hairstreak				S2	17	5.6 ± 0.0	NS
I	<i>Neurocordulia michaeli</i>	Broad-tailed Shadowdragon				S2	13	70.1 ± 0.0	NS
I	<i>Coenagrion resolutum</i>	Taiga Bluet				S2	45	19.6 ± 0.0	NS
I	<i>Margaritifera margaritifera</i>	Eastern Pearlshell				S2	135	12.1 ± 0.0	NS
I	<i>Pantala hymenaea</i>	Spot-Winged Glider				S2?B	1	72.6 ± 1.0	NS
I	<i>Nymphalis l-album</i>	Compton Tortoiseshell				S2S3	16	21.3 ± 2.0	NS
I	<i>Aglais milberti</i>	Milbert's Tortoiseshell				S2S3	21	11.5 ± 2.0	NS
I	<i>Aglais milberti milberti</i>	Milbert's Tortoise Shell				S2S3	4	33.0 ± 0.0	NS
I	<i>Lanthis vernalis</i>	Southern Pygmy Clubtail				S2S3	6	85.0 ± 0.0	NS
I	<i>Somatochlora kennedyi</i>	Kennedy's Emerald				S2S3	4	69.8 ± 0.0	NS
I	<i>Somatochlora williamsoni</i>	Williamson's Emerald				S2S3	6	74.5 ± 0.0	NS
I	<i>Williamsonia fletcheri</i>	Ebony Boghaunter				S2S3	11	24.4 ± 0.0	NS
I	<i>Stylurus scudderi</i>	Zebra Clubtail				S2S3	4	62.5 ± 1.0	NS
I	<i>Alasmodonta undulata</i>	Triangle Floater				S2S3	33	38.3 ± 0.0	NS
I	<i>Astyleiopus variegatus</i>	Variiegated Long-horned Beetle				S3	1	68.9 ± 0.0	NS
I	<i>Strophiona nitens</i>	Chestnut Bark Long-horned Beetle				S3	2	96.6 ± 0.0	NS
I	<i>Hippodamia parenthesis</i>	Parenthesis Lady Beetle				S3	1	86.9 ± 0.0	NB
I	<i>Naemia seriata</i>	Seaside Lady Beetle				S3	18	79.2 ± 0.0	NS

Taxonomic Group	Scientific Name	Common Name	COSEWIC	SARA	Prov Legal Prot	Prov Rarity Rank	# recs	Distance (km)	Prov
I	<i>Chilocorus stigma</i>	Twice-stabbed Lady Beetle				S3	1	80.6 ± 0.0	PE
I	<i>Myzia pullata</i>	Streaked Lady Beetle				S3	1	92.2 ± 0.0	NB
I	<i>Monochamus marmorator</i>	Balsam Fir Sawyer				S3	1	77.7 ± 0.0	NS
I	<i>Trachysida aspera</i>	Rough Flower Longhorn Beetle				S3	1	92.1 ± 0.0	NS
I	<i>Astylopsis sexguttata</i>	Six-speckled Long-horned Beetle				S3	1	82.1 ± 0.0	NS
I	<i>Satyrium calanus</i>	Banded Hairstreak				S3	41	11.5 ± 2.0	NS
I	<i>Callophrys lanoraieensis</i>	Bog Elfin				S3	12	47.8 ± 0.0	NS
I	<i>Strymon melinus</i>	Gray Hairstreak				S3	1	64.0 ± 2.0	NS
I	<i>Phanogomphus descriptus</i>	Harpoon Clubtail				S3	4	25.3 ± 1.0	NS
I	<i>Ophiogomphus aspersus</i>	Brook Snaketail				S3	5	41.2 ± 0.0	NS
I	<i>Ophiogomphus mainensis</i>	Maine Snaketail				S3	16	65.7 ± 0.0	NS
I	<i>Ophiogomphus rupinsulensis</i>	Rusty Snaketail				S3	32	66.1 ± 0.0	NS
I	<i>Epiptera princeps</i>	Prince Baskettail				S3	17	24.4 ± 0.0	NS
I	<i>Somatochlora forcipata</i>	Forcinate Emerald				S3	3	93.7 ± 1.0	PE
I	<i>Enallagma vernale</i>	Vernal Bluet				S3	6	25.3 ± 1.0	NS
I	<i>Strophitus undulatus</i>	Creeper				S3	6	43.3 ± 0.0	NS
I	<i>Polygonia interrogationis</i>	Question Mark				S3B	132	10.9 ± 0.0	NS
I	<i>Cecropia pylades</i>	Northern Cloudywing				S3S4	21	5.6 ± 0.0	NS
I	<i>Amblyscirtes hegon</i>	Pepper and Salt Skipper				S3S4	25	3.8 ± 1.0	NS
I	<i>Cupido comyntas</i>	Eastern Tailed Blue				S3S4	9	5.6 ± 0.0	NS
I	<i>Argynnis aphrodite</i>	Aphrodite Fritillary				S3S4	36	5.6 ± 0.0	NS
I	<i>Polygonia faunus</i>	Green Comma				S3S4	19	16.2 ± 2.0	NS
I	<i>Oeneis jutta</i>	Jutta Arctic				S3S4	21	59.5 ± 1.0	NS
I	<i>Aeshna clepsydra</i>	Mottled Darner				S3S4	9	64.0 ± 0.0	NS
I	<i>Aeshna constricta</i>	Lance-Tipped Darner				S3S4	31	19.7 ± 1.0	NS
I	<i>Boyeria grafiana</i>	Ocellated Darner				S3S4	6	20.1 ± 0.0	NS
I	<i>Gomphaeschna furcillata</i>	Harlequin Darner				S3S4	7	59.5 ± 1.0	NS
I	<i>Somatochlora franklini</i>	Delicate Emerald				S3S4	6	27.2 ± 1.0	NS
I	<i>Nannothemis bella</i>	Elfin Skimmer				S3S4	21	60.0 ± 1.0	NS
I	<i>Sympetrum danae</i>	Black Meadowhawk				S3S4	4	80.8 ± 1.0	PE
I	<i>Amphiagrion saucium</i>	Eastern Red Damsel				S3S4	2	19.7 ± 1.0	NS
I	<i>Sphaerophoria pyrrhina</i>	Violaceous Globetail				SH	1	22.9 ± 5.0	NS
I	<i>Icaricia saepiolus</i>	Greenish Blue				SH	4	22.0 ± 5.0	NS
I	<i>Polygonia gracilis</i>	Hoary Comma				SH	2	21.3 ± 2.0	NS
N	<i>Erioderma mollissimum</i>	Graceful Felt Lichen	Endangered	Endangered	Endangered	S1	14	74.0 ± 0.0	NS
N	<i>Erioderma pedicellatum</i> (Atlantic pop.)	Boreal Felt Lichen - Atlantic pop.	Endangered	Endangered	Endangered	S1	375	71.0 ± 0.0	NS
N	<i>Peltigera hydrothyria</i>	Eastern Waterfan	Threatened	Threatened	Threatened	S1	92	11.4 ± 0.0	NS
N	<i>Pannaria lurida</i>	Wrinkled Shingle Lichen	Threatened	Threatened	Threatened	S2S3	107	49.9 ± 0.0	NS
N	<i>Anzia colpodes</i>	Black-foam Lichen	Threatened	Threatened	Threatened	S3	36	40.9 ± 0.0	NS
N	<i>Fuscopannaria leucosticta</i>	White-rimmed Shingle Lichen	Threatened			S3	7	70.1 ± 0.0	NS
N	<i>Heterodermia squamulosa</i>	Scaly Fringe Lichen	Threatened			S3	78	79.0 ± 0.0	NS
N	<i>Pectenium plumbea</i>	Blue Felt Lichen	Special Concern	Special Concern	Vulnerable	S3	141	6.7 ± 0.0	NS
N	<i>Sclerophora peronella</i> (Atlantic pop.)	Frosted Glass-whiskers (Atlantic population)	Special Concern	Special Concern		S3S4	21	59.6 ± 0.0	NS
N	<i>Pseudevernia cladonia</i>	Ghost Antler Lichen	Not At Risk			S2S3	4	75.4 ± 0.0	NS
N	<i>Fissidens exilis</i>	Pygmy Pocket Moss	Not At Risk			S3	15	32.1 ± 0.0	NS
N	<i>Chaenotheca servitii</i>	Flexuous Golden Stubble	Data Deficient			S1	1	74.3 ± 1.0	NS
N	<i>Erioderma pedicellatum</i>	Boreal Felt Lichen	E,SC		Endangered	S1	1	75.3 ± 0.0	NS
N	<i>Aloina brevirostris</i>	Short-Beaked Rigid Screw Moss				S1	1	79.7 ± 2.0	NS
N	<i>Sematophyllum demissum</i>	a Moss				S1	1	80.5 ± 2.0	NS
N	<i>Tetradontium brownianum</i>	Little Georgia				S1	1	64.0 ± 0.0	NS
N	<i>Cyrtio-hypnum minutulum</i>	Tiny Cedar Moss				S1	1	74.5 ± 0.0	NS
N	<i>Blennothallia crispa</i>	Crinkled Jelly Lichen				S1	1	61.1 ± 0.0	NS

Taxonomic Group	Scientific Name	Common Name	COSEWIC	SARA	Prov Legal Prot	Prov Rarity Rank	# recs	Distance (km)	Prov
N	<i>Umbilicaria vellea</i>	Grizzled Rocktripe Lichen				S1	1	98.8 ± 5.0	NS
N	<i>Usnea perplexans</i>	Powdered Beard Lichen				S1	1	72.6 ± 0.0	NS
N	<i>Scytinium dactylinum</i>	Brown-buttoned Jellyskin Lichen				S1	1	97.3 ± 0.0	NS
N	<i>Lathagrium cristatum</i>	Fingered Jelly Lichen				S1	3	76.8 ± 0.0	NS
N	<i>Ephebe perspinulosa</i>	Thread Lichen				S1	1	97.5 ± 1.0	NS
N	<i>Fuscopannaria praetermissa</i>	Moss Shingles Lichen				S1	1	82.4 ± 0.0	NS
N	<i>Scytinium schraderi</i>	Wrinkled Jellyskin Lichen				S1	1	33.1 ± 0.0	NS
N	<i>Polychidium muscicola</i>	Eyed Mossthorns Woollybear Lichen				S1	1	58.2 ± 0.0	NS
N	<i>Peltigera lepidophora</i>	Scaly Pelt Lichen				S1	6	53.1 ± 4.0	NS
N	<i>Hypogymnia hultenii</i>	Powdered Honeycomb Lichen				S1	10	95.9 ± 0.0	NS
N	<i>Calypogeia neogaea</i>	Common Pouchwort				S1?	1	52.9 ± 0.0	NS
N	<i>Aloina rigida</i>	Aloe-Like Rigid Screw Moss				S1?	5	15.9 ± 0.0	NS
N	<i>Campylostelium saxicola</i>	a Moss				S1?	2	75.7 ± 0.0	PE
N	<i>Tortula obtusifolia</i>	a Moss				S1?	3	20.3 ± 1.0	NS
N	<i>Didymodon tophaceus</i>	Olive Beard Moss				S1?	2	61.1 ± 0.0	NS
N	<i>Paludella squarrosa</i>	Tufted Fen Moss				S1?	3	72.2 ± 0.0	NS
N	<i>Physcomitrium immersum</i>	a Moss				S1?	1	88.9 ± 0.0	NS
N	<i>Schistostega pennata</i>	Luminous Moss				S1?	1	66.4 ± 0.0	NS
N	<i>Syntrichia ruralis</i>	a Moss				S1?	1	85.2 ± 0.0	NS
N	<i>Enchylium limosum</i>	Lime-loving Tarpaper Lichen				S1?	2	61.1 ± 4.0	NS
N	<i>Scytinium intermedium</i>	Forty-five Jellyskin Lichen				S1?	1	61.1 ± 4.0	NS
N	<i>Arrhenopterum heterostichum</i>	One-sided Groove Moss				S1S2	2	51.7 ± 1.0	NS
N	<i>Mnium thomsonii</i>	Thomson's Leafy Moss				S1S2	1	80.6 ± 2.0	NS
N	<i>Plagiothecium latebricola</i>	Alder Silk Moss				S1S2	1	54.8 ± 3.0	NS
N	<i>Platydictya confervoides</i>	a Moss				S1S2	1	81.7 ± 0.0	NS
N	<i>Seligeria donniana</i>	Donian Beardless Moss				S1S2	1	64.5 ± 3.0	NS
N	<i>Sematophyllum marylandicum</i>	a Moss				S1S2	2	69.1 ± 6.0	NS
N	<i>Timmia megapolitana</i>	Metropolitan Timmia Moss				S1S2	3	11.5 ± 0.0	NS
N	<i>Tortula mucronifolia</i>	Mucronate Screw Moss				S1S2	1	76.9 ± 3.0	NS
N	<i>Pseudotaxiphyllum distichaceum</i>	a Moss				S1S2	2	56.7 ± 0.0	NS
N	<i>Haplocladium microphyllum</i>	Tiny-leaved Haplocladium Moss				S1S2	1	24.5 ± 5.0	NS
N	<i>Enchylium bachmanianum</i>	Bachman's Jelly Lichen				S1S2	1	77.3 ± 0.0	NS
N	<i>Placidium squamulosum</i>	Limy Soil Stipplescale Lichen				S1S2	1	56.7 ± 6.0	NS
N	<i>Peltigera ponojensis</i>	Pale-bellied Pelt Lichen				S1S2	1	50.5 ± 0.0	NS
N	<i>Pilophorus cereolus</i>	Powdered Matchstick Lichen				S1S2	1	41.1 ± 3.0	NS
N	<i>Parmotrema reticulatum</i>	Netted Ruffle Lichen				S1S2	5	82.2 ± 0.0	NS
N	<i>Parmeliella parvula</i>	Poor-man's Shingles Lichen				S1S2	7	75.5 ± 0.0	NS
N	<i>Heterodermia galactophylla</i>	Branching Fringe Lichen				S1S3	2	33.4 ± 0.0	NS
N	<i>Stereocaulon grande</i>	Grand Foam Lichen				S1S3	1	11.0 ± 0.0	NS
N	<i>Stereocaulon intermedium</i>	Pacific Brain Foam Lichen				S1S3	2	85.3 ± 2.0	NS
N	<i>Anacamptodon splachnoides</i>	a Moss				S2	2	54.8 ± 3.0	NS
N	<i>Sphagnum platyphyllum</i>	Flat-leaved Peat Moss				S2	2	77.0 ± 3.0	NS
N	<i>Sphagnum subnitens</i>	Lustrous Peat Moss				S2	1	95.4 ± 2.0	NS
N	<i>Cystocoleus ebeneus</i>	Rockgossamer Lichen				S2	3	90.9 ± 0.0	NS
N	<i>Scytinium imbricatum</i>	Scaly Jellyskin Lichen				S2	1	49.1 ± 4.0	NS
N	<i>Nephroma arcticum</i>	Arctic Kidney Lichen				S2	1	91.0 ± 0.0	NS
N	<i>Nephroma resupinatum</i>	a lichen				S2	2	83.1 ± 1.0	NS
N	<i>Placynthium flabellousum</i>	Scaly Ink Lichen				S2	1	68.4 ± 17.0	NS
N	<i>Riccardia multifida</i>	Delicate Germanderwort				S2?	1	71.0 ± 0.0	NS
N	<i>Anomodon viticulosus</i>	a Moss				S2?	1	18.7 ± 5.0	NS

Taxonomic Group	Scientific Name	Common Name	COSEWIC	SARA	Prov Legal Prot	Prov Rarity Rank	# recs	Distance (km)	Prov
N	<i>Weissia muhlenbergiana</i>	a Moss				S2?	4	80.6 ± 1.0	NS
N	<i>Atrichum angustatum</i>	Lesser Smoothcap Moss				S2?	2	20.4 ± 2.0	NS
N	<i>Ptychostomum pendulum</i>	Drooping Bryum				S2?	1	79.7 ± 2.0	NS
N	<i>Drepanocladus polygamus</i>	Polygamous Hook Moss				S2?	4	61.1 ± 4.0	NS
N	<i>Ditrichum rhynchostegium</i>	a Moss				S2?	2	69.6 ± 0.0	PE
N	<i>Kiaeria starkei</i>	Starke's Fork Moss				S2?	1	87.7 ± 10.0	NS
N	<i>Orthotrichum anomalum</i>	Anomalous Bristle Moss				S2?	1	86.6 ± 2.0	NS
N	<i>Philonotis marchica</i>	a Moss				S2?	2	24.1 ± 0.0	NS
N	<i>Platydictya jungermannioides</i>	False Willow Moss				S2?	1	54.2 ± 0.0	NS
N	<i>Saelania glaucescens</i>	Blue Dew Moss				S2?	1	17.2 ± 0.0	NS
N	<i>Cyrtomnium hymenophylloides</i>	Short-pointed Lantern Moss				S2?	2	17.2 ± 0.0	NS
N	<i>Platylomella lescurii</i>	a Moss				S2?	1	64.8 ± 0.0	NS
N	<i>Phylliscum demangeonii</i>	Black Rock-wafer Lichen				S2?	1	95.3 ± 0.0	NS
N	<i>Oxyrrhynchium hians</i>	Light Beaked Moss				S2S3	4	59.8 ± 25.0	NS
N	<i>Platydictya subtilis</i>	Bark Willow Moss				S2S3	3	54.8 ± 3.0	NS
N	<i>Scorpidium revolvens</i>	Limprichtia Moss				S2S3	1	72.2 ± 0.0	NS
N	<i>Moelleropsis nebulosa</i>	Blue-gray Moss Shingle Lichen				S2S3	46	37.5 ± 3.0	NS
N	<i>Moelleropsis nebulosa ssp. frullaniae</i>	Blue-gray Moss Shingle Lichen				S2S3	2	71.7 ± 0.0	NS
N	<i>Ramalina thrausta</i>	Angelhair Ramalina Lichen				S2S3	14	43.8 ± 0.0	NS
N	<i>Collema leptaleum</i>	Crumpled Bat's Wing Lichen				S2S3	59	24.3 ± 0.0	NS
N	<i>Usnea ceratina</i>	Warty Beard Lichen				S2S3	1	51.4 ± 0.0	NS
N	<i>Usnea rubicunda</i>	Red Beard Lichen				S2S3	3	22.5 ± 0.0	NS
N	<i>Ahtiana aurescens</i>	Eastern Candlewax Lichen				S2S3	9	66.4 ± 0.0	NS
N	<i>Usnocetraria oakesiana</i>	Yellow Band Lichen				S2S3	6	72.9 ± 0.0	NS
N	<i>Cladonia incrassata</i>	Powder-foot British Soldiers Lichen				S2S3	1	99.9 ± 0.0	NS
N	<i>Cladonia mateocyatha</i>	Mixed-up Pixie-cup				S2S3	3	95.8 ± 6.0	NS
N	<i>Cladonia parasitica</i>	Fence-rail Lichen				S2S3	4	24.4 ± 1.0	NS
N	<i>Scytinium tenuissimum</i>	Birdnest Jellyskin Lichen				S2S3	10	22.5 ± 0.0	NS
N	<i>Melanohalea septentrionalis</i>	Northern Camouflage Lichen				S2S3	1	72.1 ± 0.0	NS
N	<i>Myelochroa aurulenta</i>	Powdery Axil-bristle Lichen				S2S3	4	20.9 ± 0.0	NS
N	<i>Parmelia fertilis</i>	Fertile Shield Lichen				S2S3	10	3.7 ± 0.0	NS
N	<i>Hypotrachyna minarum</i>	Hairless-spined Shield Lichen				S2S3	1	83.4 ± 0.0	NS
N	<i>Parmeliopsis ambigua</i>	Green Starburst Lichen				S2S3	2	56.3 ± 1.0	NS
N	<i>Racodium rupestre</i>	Rockhair Lichen				S2S3	1	87.2 ± 1.0	NS
N	<i>Umbilicaria polyphylla</i>	Petalled Rocktripe Lichen				S2S3	1	94.8 ± 2.0	NS
N	<i>Usnea cavernosa</i>	Pitted Beard Lichen				S2S3	2	72.6 ± 0.0	NS
N	<i>Usnea mutabilis</i>	Bloody Beard Lichen				S2S3	1	72.7 ± 0.0	NS
N	<i>Fuscopannaria sorediata</i>	a Lichen				S2S3	4	84.8 ± 0.0	NS
N	<i>Stereocaulon condensatum</i>	Granular Soil Foam Lichen				S2S3	10	41.3 ± 0.0	NS
N	<i>Physcia subtilis</i>	Slender Rosette Lichen				S2S3	1	72.3 ± 0.0	NS
N	<i>Cladonia coccifera</i>	Eastern Boreal Pixie-cup Lichen				S2S3	2	60.9 ± 4.0	NS
N	<i>Cladonia deformis</i>	Lesser Sulphur-cup Lichen				S2S3	3	78.4 ± 0.0	PE
N	<i>Ephemerum serratum</i>	a Moss				S3	4	32.1 ± 0.0	NS
N	<i>Fissidens taxifolius</i>	Yew-leaved Pocket Moss				S3	8	32.1 ± 0.0	NS
N	<i>Anomodon tristis</i>	a Moss				S3	9	79.8 ± 0.0	NS
N	<i>Sphagnum contortum</i>	Twisted Peat Moss				S3	4	53.1 ± 4.0	NS
N	<i>Tetraplodon angustatus</i>	Toothed-leaved Nitrogen Moss				S3	3	76.1 ± 0.0	NS
N	<i>Rostania occultata</i>	Crusted Tarpaper Lichen				S3	3	60.9 ± 0.0	NS
N	<i>Collema nigrescens</i>	Blistered Tarpaper Lichen				S3	19	43.9 ± 0.0	NS
N	<i>Solorina saccata</i>	Woodland Owl Lichen				S3	11	49.1 ± 4.0	NS

Taxonomic Group	Scientific Name	Common Name	COSEWIC	SARA	Prov Legal Prot	Prov Rarity Rank	# recs	Distance (km)	Prov
N	<i>Fuscopannaria ahlneri</i>	Corrugated Shingles Lichen				S3	68	24.0 ± 0.0	NS
N	<i>Scytinium lichenoides</i>	Tattered Jellyskin Lichen				S3	28	32.1 ± 0.0	NS
N	<i>Leptogium milligranum</i>	Stretched Jellyskin Lichen				S3	10	15.9 ± 0.0	NS
N	<i>Nephroma bellum</i>	Naked Kidney Lichen				S3	9	23.6 ± 0.0	NS
N	<i>Placynthium nigrum</i>	Common Ink Lichen				S3	4	57.6 ± 0.0	NS
N	<i>Platismatia norvegica</i>	Oldgrowth Rag Lichen				S3	1	99.4 ± 0.0	NS
N	<i>Punctelia appalachensis</i>	Appalachian Speckleback Lichen				S3	106	76.8 ± 0.0	NS
N	<i>Viridothelium virens</i>					S3	2	79.7 ± 0.0	NS
N	<i>Ephebe lanata</i>	Waterside Rockshag Lichen				S3	2	58.2 ± 0.0	NS
N	<i>Phaeophyscia adiastrata</i>	Powder-tipped Shadow Lichen				S3	3	82.2 ± 0.0	PE
N	<i>Phaeophyscia pusilloides</i>	Pompom-tipped Shadow Lichen				S3	18	41.6 ± 0.0	NS
N	<i>Peltigera collina</i>	Tree Pelt Lichen				S3	7	11.1 ± 0.0	NS
N	<i>Metzgeria conjugata</i>	Rock Veilwort				S3?	1	98.9 ± 0.0	NS
N	<i>Barbula convoluta</i>	Lesser Bird's-claw Beard Moss				S3?	3	73.9 ± 0.0	PE
N	<i>Calliergon giganteum</i>	Giant Spear Moss				S3?	1	76.7 ± 3.0	NS
N	<i>Drummondia prorepens</i>	a Moss				S3?	1	90.7 ± 5.0	NS
N	<i>Elodium blandowii</i>	Blandow's Bog Moss				S3?	5	35.1 ± 3.0	NS
N	<i>Mnium stellare</i>	Star Leafy Moss				S3?	3	51.7 ± 1.0	NS
N	<i>Sphagnum riparium</i>	Streamside Peat Moss				S3?	2	79.5 ± 0.0	NS
N	<i>Cladonia stygia</i>	Black-footed Reindeer Lichen				S3?	17	71.8 ± 0.0	NS
N	<i>Anomodon rugelii</i>	Rugel's Anomodon Moss				S3S4	1	79.8 ± 0.0	NS
N	<i>Dichelyma capillaceum</i>	Hairlike Dichelyma Moss				S3S4	1	84.4 ± 3.0	NS
N	<i>Encalypta ciliata</i>	Fringed Extinguisher Moss				S3S4	2	76.9 ± 3.0	NS
N	<i>Encalypta procera</i>	Slender Extinguisher Moss				S3S4	1	64.5 ± 3.0	NS
N	<i>Myurella julacea</i>	Small Mouse-tail Moss				S3S4	1	17.2 ± 0.0	NS
N	<i>Splachnum ampullaceum</i>	Cruet Dung Moss				S3S4	4	73.1 ± 0.0	NS
N	<i>Thamnobryum alleghaniense</i>	a Moss				S3S4	8	37.3 ± 0.0	NS
N	<i>Tomentypnum nitens</i>	Golden Fuzzy Fen Moss				S3S4	2	72.2 ± 0.0	NS
N	<i>Schistidium agassizii</i>	Elf Bloom Moss				S3S4	1	85.3 ± 0.0	NS
N	<i>Hylocomastrum pyrenaicum</i>	a Feather Moss				S3S4	1	64.5 ± 3.0	NS
N	<i>Bryoria pseudofuscescens</i>	Mountain Horsehair Lichen				S3S4	11	77.6 ± 0.0	PE
N	<i>Enchylium tenax</i>	Soil Tarpaper Lichen				S3S4	9	32.1 ± 0.0	NS
N	<i>Sticta fuliginosa</i>	Peppered Moon Lichen				S3S4	50	24.3 ± 1.0	NS
N	<i>Arctoparmelia incurva</i>	Finger Ring Lichen				S3S4	16	94.0 ± 0.0	NS
N	<i>Scytinium teretiusculum</i>	Curly Jellyskin Lichen				S3S4	13	56.6 ± 0.0	NS
N	<i>Leptogium acadense</i>	Acadian Jellyskin Lichen				S3S4	23	10.5 ± 0.0	NS
N	<i>Scytinium subtile</i>	Appressed Jellyskin Lichen				S3S4	24	32.2 ± 0.0	NS
N	<i>Cladonia floerkeana</i>	Gritty British Soldiers Lichen				S3S4	1	90.4 ± 0.0	NB
N	<i>Vahlia leucophaea</i>	Shelter Shingle Lichen				S3S4	11	36.4 ± 0.0	NS
N	<i>Heterodermia speciosa</i>	Powdered Fringe Lichen				S3S4	39	10.6 ± 0.0	NS
N	<i>Leptogium corticola</i>	Blistered Jellyskin Lichen				S3S4	40	58.6 ± 4.0	NS
N	<i>Melanohalea olivacea</i>	Spotted Camouflage Lichen				S3S4	6	55.3 ± 3.0	NS
N	<i>Parmeliopsis hyperopta</i>	Gray Starburst Lichen				S3S4	4	35.2 ± 0.0	NS
N	<i>Parmotrema perlatum</i>	Powdered Ruffle Lichen				S3S4	10	82.1 ± 0.0	NS
N	<i>Peltigera hymenina</i>	Cloudy Pelt Lichen				S3S4	1	96.1 ± 1.0	NS
N	<i>Sphaerophorus fragilis</i>	Fragile Coral Lichen				S3S4	1	94.1 ± 0.0	NS
N	<i>Coccocarpia palmicola</i>	Salted Shell Lichen				S3S4	526	48.3 ± 0.0	NS
N	<i>Physcia caesia</i>	Blue-gray Rosette Lichen				S3S4	1	90.8 ± 0.0	NS
N	<i>Physcia tenella</i>	Fringed Rosette Lichen				S3S4	4	67.7 ± 0.0	PE
N	<i>Anaptychia palmulata</i>	Shaggy Fringed Lichen				S3S4	96	7.8 ± 0.0	NS
N	<i>Evernia prunastri</i>	Valley Oakmoss Lichen				S3S4	42	12.0 ± 0.0	NS
N	<i>Heterodermia neglecta</i>	Fringe Lichen				S3S4	71	32.6 ± 0.0	NS
P	<i>Fraxinus nigra</i>	Black Ash	Threatened		Threatened	S1S2	670	9.3 ± 0.0	NS

Taxonomic Group	Scientific Name	Common Name	COSEWIC	SARA	Prov Legal Prot	Prov Rarity Rank	# recs	Distance (km)	Prov
P	<i>Bartonia paniculata</i> ssp. <i>paniculata</i>	Branched Bartonia	Threatened	Threatened		SNA	1	59.8 ± 10.0	NS
P	<i>Lilaeopsis chinensis</i>	Eastern Lilaeopsis	Special Concern	Special Concern	Vulnerable	S3	17	40.0 ± 0.0	NS
P	<i>Isoetes prototypus</i>	Prototype Quillwort	Special Concern	Special Concern	Vulnerable	S3	13	20.8 ± 0.0	NS
P	<i>Floerkea proserpinacoides</i>	False Mermaidweed	Not At Risk			S2S3	2	24.0 ± 7.0	NS
P	<i>Osmorhiza depauperata</i>	Blunt Sweet Cicely				S1	1	89.6 ± 5.0	NS
P	<i>Andersonglossum boreale</i>	Northern Wild Comfrey				S1	3	77.9 ± 1.0	NS
P	<i>Lobelia spicata</i>	Pale-Spiked Lobelia				S1	13	21.3 ± 7.0	NS
P	<i>Hudsonia tomentosa</i>	Woolly Beach-heath				S1	9	68.3 ± 7.0	NS
P	<i>Callitriche hermaphroditica</i>	Northern Water-starwort				S1	5	87.5 ± 0.0	NB
P	<i>Elatine americana</i>	American Waterwort				S1	2	49.6 ± 0.0	NS
P	<i>Ribes americanum</i>	Wild Black Currant				S1	4	20.3 ± 5.0	NS
P	<i>Utricularia ochroleuca</i>	Yellowish-white Bladderwort				S1	37	71.9 ± 0.0	NS
P	<i>Fraxinus pennsylvanica</i>	Red Ash				S1	14	33.2 ± 0.0	NS
P	<i>Polygonum achoreum</i>	Leathery Knotweed				S1	2	83.8 ± 0.0	NB
P	<i>Persicaria careyi</i>	Carey's Smartweed				S1	1	41.8 ± 3.0	NS
P	<i>Phytolacca americana</i>	Common Pokeweed				S1	1	92.9 ± 0.0	NS
P	<i>Montia fontana</i>	Water Blinks				S1	1	99.7 ± 5.0	PE
P	<i>Lysimachia quadrifolia</i>	Whorled Yellow Loosestrife				S1	1	99.0 ± 0.0	NS
P	<i>Clematis occidentalis</i>	Purple Clematis				S1	3	71.2 ± 0.0	NS
P	<i>Ranunculus pennsylvanicus</i>	Pennsylvania Buttercup				S1	31	20.3 ± 0.0	NS
P	<i>Amelanchier nantucketensis</i>	Nantucket Serviceberry				S1	1	70.8 ± 1.0	NS
P	<i>Salix myrtillifolia</i>	Blueberry Willow				S1	1	61.2 ± 0.0	NS
P	<i>Salix serissima</i>	Autumn Willow				S1	2	61.2 ± 0.0	NS
P	<i>Carex garberi</i>	Garber's Sedge				S1	4	25.3 ± 0.0	NS
P	<i>Carex granularis</i>	Limestone Meadow Sedge				S1	2	73.2 ± 0.0	NS
P	<i>Carex laxiflora</i>	Loose-Flowered Sedge				S1	1	82.9 ± 1.0	NS
P	<i>Carex ormostachya</i>	Necklace Spike Sedge				S1	1	76.6 ± 1.0	NB
P	<i>Carex plantaginea</i>	Plantain-Leaved Sedge				S1	4	20.4 ± 0.0	NS
P	<i>Carex prairea</i>	Prairie Sedge				S1	3	92.4 ± 0.0	PE
P	<i>Carex tenuiflora</i>	Sparse-Flowered Sedge				S1	2	72.5 ± 0.0	NS
P	<i>Carex tincta</i>	Tinged Sedge				S1	3	86.8 ± 0.0	PE
P	<i>Carex viridula</i> var. <i>saxillitoralis</i>	Greenish Sedge				S1	1	90.9 ± 0.0	NS
P	<i>Cyperus lupulinus</i> ssp. <i>macilentus</i>	Hop Flatsedge				S1	2	60.8 ± 0.0	NS
P	<i>Scirpus atrovirens</i>	Dark-green Bulrush				S1	4	36.1 ± 0.0	NS
P	<i>Blysmopsis rufa</i>	Red Bulrush				S1	2	94.9 ± 1.0	PE
P	<i>Juncus vaseyi</i>	Vasey Rush				S1	4	27.5 ± 0.0	NS
P	<i>Trillium grandiflorum</i>	White Trillium				S1	3	98.4 ± 1.0	NS
P	<i>Malaxis monophyllos</i> var. <i>brachypoda</i>	North American White Adder's-mouth				S1	5	50.6 ± 1.0	NS
P	<i>Calamagrostis stricta</i> ssp. <i>inexpansa</i>	Slim-stemmed Reed Grass				S1	1	81.0 ± 1.0	NB
P	<i>Elymus hystrix</i>	Spreading Wild Rye				S1	12	32.5 ± 1.0	NS
P	<i>Adiantum pedatum</i>	Northern Maidenhair Fern				S1	13	18.9 ± 1.0	NS
P	<i>Equisetum palustre</i>	Marsh Horsetail				S1	1	99.4 ± 5.0	NS
P	<i>Botrychium lunaria</i>	Common Moonwort				S1	8	98.3 ± 0.0	NS
P	<i>Selaginella rupestris</i>	Rock Spikemoss				S1	1	77.8 ± 0.0	NS
P	<i>Solidago hispida</i>	Hairy Goldenrod				S1?	2	76.5 ± 7.0	NS
P	<i>Suaeda rolandii</i>	Roland's Sea-Blite				S1?	7	42.4 ± 2.0	NS
P	<i>Carex pennsylvanica</i>	Pennsylvania Sedge				S1?	3	33.7 ± 0.0	NS
P	<i>Carex rostrata</i>	Narrow-leaved Beaked Sedge				S1?	1	96.6 ± 0.0	NS
P	<i>Bolboschoenus robustus</i>	Sturdy Bulrush				S1?	2	33.3 ± 5.0	NS
P	<i>Allium schoenoprasum</i>	Wild Chives				S1?	9	11.5 ± 0.0	NS
P	<i>Allium schoenoprasum</i> var. <i>sibiricum</i>	Wild Chives				S1?	1	18.3 ± 7.0	NS

Taxonomic Group	Scientific Name	Common Name	COSEWIC	SARA	Prov Legal Prot	Prov Rarity Rank	# recs	Distance (km)	Prov
P	<i>Cypripedium arietinum</i>	Ram's-Head Lady's-Slipper			Endangered	S1S2	300	25.0 ± 0.0	NS
P	<i>Sanicula odorata</i>	Clustered Sanicle				S1S2	9	32.5 ± 10.0	NS
P	<i>Draba glabella</i>	Rock Whitlow-Grass				S1S2	2	76.9 ± 0.0	NS
P	<i>Proserpinaca intermedia</i>	Intermediate Mermaidweed				S1S2	1	59.8 ± 0.0	NS
P	<i>Anemone virginiana</i> var. <i>alba</i>	Virginia Anemone				S1S2	5	18.3 ± 7.0	NS
P	<i>Carex haydenii</i>	Hayden's Sedge				S1S2	5	18.9 ± 1.0	NS
P	<i>Platanthera huronensis</i>	Fragrant Green Orchid				S1S2	2	71.3 ± 10.0	NS
P	<i>Calamagrostis stricta</i> ssp. <i>stricta</i>	Slim-stemmed Reed Grass				S1S2	9	63.0 ± 7.0	NS
P	<i>Carex vacillans</i>	Estuarine Sedge				S1S3	4	76.6 ± 0.0	NB
P	<i>Zizia aurea</i>	Golden Alexanders				S2	39	23.5 ± 1.0	NS
P	<i>Antennaria parlinii</i> ssp. <i>fallax</i>	Parlin's Pussytoes				S2	13	35.3 ± 0.0	NS
P	<i>Rudbeckia laciniata</i>	Cut-Leaved Coneflower				S2	33	27.4 ± 3.0	NS
P	<i>Rudbeckia laciniata</i> var. <i>laciniata</i>	Cut-Leaved Coneflower				S2	7	90.0 ± 0.0	NS
P	<i>Arabis pycnocarpa</i>	Cream-flowered Rockcress				S2	1	55.2 ± 0.0	NS
P	<i>Cardamine maxima</i>	Large Toothwort				S2	1	84.7 ± 0.0	NS
P	<i>Hudsonia ericoides</i>	Pinebarren Golden Heather				S2	1	97.7 ± 7.0	NS
P	<i>Desmodium canadense</i>	Canada Tick-trefoil				S2	21	21.2 ± 5.0	NS
P	<i>Hylodesmum glutinosum</i>	Large Tick-trefoil				S2	17	68.6 ± 0.0	NS
P	<i>Conopholis americana</i>	American Cancer-root				S2	3	95.0 ± 0.0	NS
P	<i>Anemonastrum canadense</i>	Canada Anemone				S2	7	21.1 ± 0.0	NS
P	<i>Hepatica americana</i>	Round-lobed Hepatica				S2	69	23.9 ± 0.0	NS
P	<i>Ranunculus sceleratus</i>	Cursed Buttercup				S2	18	88.2 ± 0.0	NS
P	<i>Galium boreale</i>	Northern Bedstraw				S2	10	22.2 ± 5.0	NS
P	<i>Comandra umbellata</i>	Bastard's Toadflax				S2	1	90.6 ± 1.0	NB
P	<i>Gratiola neglecta</i>	Clammy Hedge-Hyssop				S2	19	32.3 ± 2.0	NS
P	<i>Dirca palustris</i>	Eastern Leatherwood				S2	66	46.9 ± 7.0	NS
P	<i>Carex chordorrhiza</i>	Creeping Sedge				S2	52	70.8 ± 0.0	NS
P	<i>Carex gynocrates</i>	Northern Bog Sedge				S2	2	61.2 ± 0.0	NS
P	<i>Carex pellita</i>	Woolly Sedge				S2	12	24.5 ± 0.0	NS
P	<i>Carex livida</i>	Livid Sedge				S2	49	57.5 ± 0.0	NS
P	<i>Juncus greenei</i>	Greene's Rush				S2	9	33.4 ± 1.0	NS
P	<i>Allium tricoccum</i>	Wild Leek				S2	29	27.3 ± 0.0	NS
P	<i>Lilium canadense</i>	Canada Lily				S2	117	16.7 ± 1.0	NS
P	<i>Cypripedium parviflorum</i> var. <i>pubescens</i>	Yellow Lady's-slipper				S2	22	52.4 ± 7.0	NS
P	<i>Cypripedium parviflorum</i> var. <i>makasin</i>	Small Yellow Lady's-Slipper				S2	11	77.0 ± 0.0	NS
P	<i>Cypripedium reginae</i>	Showy Lady's-Slipper				S2	58	33.1 ± 7.0	NS
P	<i>Platanthera flava</i> var. <i>flava</i>	Southern Rein Orchid				S2	1	86.7 ± 7.0	NS
P	<i>Platanthera flava</i> var. <i>herbiola</i>	Pale Green Orchid				S2	11	26.7 ± 1.0	NS
P	<i>Platanthera macrophylla</i>	Large Round-Leaved Orchid				S2	15	10.3 ± 1.0	NS
P	<i>Bromus latiglumis</i>	Broad-Glumed Brome				S2	33	27.7 ± 0.0	NS
P	<i>Cinna arundinacea</i>	Sweet Wood Reed Grass				S2	19	41.0 ± 0.0	NS
P	<i>Elymus wiegandii</i>	Wiegand's Wild Rye				S2	21	20.1 ± 0.0	NS
P	<i>Festuca subverticillata</i>	Nodding Fescue				S2	13	37.2 ± 1.0	NS
P	<i>Cryptogramma stelleri</i>	Steller's Rockbrake				S2	3	40.8 ± 0.0	NS
P	<i>Cuscuta cephalanthi</i>	Buttonbush Dodder				S2?	2	53.4 ± 1.0	NS
P	<i>Rumex persicarioides</i>	Peach-leaved Dock				S2?	1	78.3 ± 5.0	PE
P	<i>Crataegus submollis</i>	Quebec Hawthorn				S2?	7	23.6 ± 5.0	NS
P	<i>Carex peckii</i>	White-Tinged Sedge				S2?	4	16.7 ± 0.0	NS
P	<i>Thuja occidentalis</i>	Eastern White Cedar			Vulnerable	S2S3	951	32.3 ± 0.0	NS
P	<i>Osmorhiza longistylis</i>	Smooth Sweet Cicely				S2S3	31	21.4 ± 5.0	NS
P	<i>Bidens hyperborea</i>	Estuary Beggarticks				S2S3	2	40.5 ± 0.0	NS
P	<i>Erigeron philadelphicus</i>	Philadelphia Fleabane				S2S3	5	56.9 ± 1.0	NS

Taxonomic Group	Scientific Name	Common Name	COSEWIC	SARA	Prov Legal Prot	Prov Rarity Rank	# recs	Distance (km)	Prov
P	<i>Lactuca hirsuta</i>	Hairy Lettuce				S2S3	4	81.0 ± 5.0	PE
P	<i>Impatiens pallida</i>	Pale Jewelweed				S2S3	2	32.6 ± 0.0	NS
P	<i>Caulophyllum thalictroides</i>	Blue Cohosh				S2S3	83	27.4 ± 0.0	NS
P	<i>Draba arabisans</i>	Rock Whitlow-Grass				S2S3	13	68.2 ± 0.0	NS
P	<i>Boechera stricta</i>	Drummond's Rockcress				S2S3	12	12.9 ± 1.0	NS
P	<i>Stellaria humifusa</i>	Saltmarsh Starwort				S2S3	7	51.8 ± 1.0	NS
P	<i>Oxybasis rubra</i>	Red Goosefoot				S2S3	3	57.4 ± 0.0	NS
P	<i>Hypericum majus</i>	Large St John's-wort				S2S3	19	23.2 ± 0.0	NS
P	<i>Hypericum x dissimulatum</i>	Disguised St. John's-wort				S2S3	8	22.4 ± 1.0	NS
P	<i>Empetrum atropurpureum</i>	Purple Crowberry				S2S3	1	97.5 ± 7.0	NS
P	<i>Euphorbia polygonifolia</i>	Seaside Spurge				S2S3	4	70.2 ± 1.0	PE
P	<i>Myriophyllum farwellii</i>	Farwell's Water Milfoil				S2S3	13	38.3 ± 1.0	NS
P	<i>Hedeoma pulegioides</i>	American False Pennyroyal				S2S3	14	28.7 ± 1.0	NS
P	<i>Oenothera fruticosa</i> ssp. <i>tetragona</i>	Narrow-leaved Evening Primrose				S2S3	6	18.3 ± 7.0	NS
P	<i>Polygala polygama</i>	Racemed Milkwort				S2S3	1	99.0 ± 1.0	NS
P	<i>Polygonum aviculare</i> ssp. <i>buxiforme</i>	Box Knotweed				S2S3	7	18.3 ± 7.0	NS
P	<i>Polygonum oxyspermum</i>	Sharp-fruit Knotweed				S2S3	1	88.0 ± 0.0	NS
P	<i>Rumex triangulivalvis</i>	Triangular-valve Dock				S2S3	11	19.7 ± 0.0	NS
P	<i>Primula mistassinica</i>	Mistassini Primrose				S2S3	16	18.3 ± 7.0	NS
P	<i>Anemone quinquefolia</i>	Wood Anemone				S2S3	18	20.7 ± 0.0	NS
P	<i>Caltha palustris</i>	Yellow Marsh Marigold				S2S3	25	74.1 ± 1.0	PE
P	<i>Amelanchier fernaldii</i>	Fernald's Serviceberry				S2S3	1	52.9 ± 5.0	NS
P	<i>Potentilla canadensis</i>	Canada Cinquefoil				S2S3	4	31.3 ± 5.0	NS
P	<i>Galium obtusum</i>	Blunt-leaved Bedstraw				S2S3	1	76.6 ± 1.0	NB
P	<i>Salix pellita</i>	Satiny Willow				S2S3	8	26.5 ± 7.0	NS
P	<i>Tiarella cordifolia</i>	Heart-leaved Foamflower				S2S3	222	18.9 ± 1.0	NS
P	<i>Agalinis purpurea</i> var. <i>parviflora</i>	Small-flowered Purple False Foxglove				S2S3	25	24.6 ± 0.0	NS
P	<i>Boehmeria cylindrica</i>	Small-spike False-nettle				S2S3	2	59.0 ± 0.0	NS
P	<i>Carex adusta</i>	Lesser Brown Sedge				S2S3	6	7.5 ± 7.0	NS
P	<i>Carex capillaris</i>	Hairlike Sedge				S2S3	2	56.0 ± 0.0	NS
P	<i>Carex comosa</i>	Bearded Sedge				S2S3	12	7.5 ± 7.0	NS
P	<i>Carex houghtoniana</i>	Houghton's Sedge				S2S3	5	38.6 ± 1.0	NS
P	<i>Carex hystericina</i>	Porcupine Sedge				S2S3	8	36.8 ± 0.0	NS
P	<i>Eleocharis ovata</i>	Ovate Spikerush				S2S3	13	10.0 ± 0.0	NS
P	<i>Scirpus pedicellatus</i>	Stalked Bulrush				S2S3	7	43.3 ± 0.0	NS
P	<i>Vallisneria americana</i>	Wild Celery				S2S3	8	31.2 ± 0.0	NS
P	<i>Najas gracillima</i>	Thread-Like Naiad				S2S3	2	77.2 ± 0.0	NS
P	<i>Goodyera pubescens</i>	Downy Rattlesnake-Plantain				S2S3	14	57.9 ± 1.0	NS
P	<i>Spiranthes lucida</i>	Shining Ladies'-Tresses				S2S3	28	24.2 ± 0.0	NS
P	<i>Calamagrostis stricta</i>	Slim-stemmed Reed Grass				S2S3	8	71.8 ± 0.0	NS
P	<i>Potamogeton friesii</i>	Fries' Pondweed				S2S3	19	22.0 ± 5.0	NS
P	<i>Woodsia glabella</i>	Smooth Cliff Fern				S2S3	2	16.5 ± 1.0	NS
P	<i>Botrychium lanceolatum</i> ssp. <i>angustisegmentum</i>	Narrow Triangle Moonwort				S2S3	16	25.2 ± 1.0	NS
P	<i>Botrychium simplex</i>	Least Moonwort				S2S3	6	40.8 ± 0.0	NS
P	<i>Ophioglossum pusillum</i>	Northern Adder's-tongue				S2S3	7	28.6 ± 0.0	NS
P	<i>Potamogeton pulcher</i>	Spotted Pondweed			Vulnerable	S3	3	56.9 ± 2.0	NS
P	<i>Angelica atropurpurea</i>	Purple-stemmed Angelica				S3	4	43.0 ± 0.0	NS
P	<i>Conioselinum chinense</i>	Chinese Hemlock-parsley				S3	7	39.9 ± 5.0	NS
P	<i>Hieracium robinsonii</i>	Robinson's Hawkweed				S3	3	22.5 ± 1.0	NS
P	<i>Iva frutescens</i>	Big-leaved Marsh-elder				S3	35	74.4 ± 0.0	NS
P	<i>Senecio pseudoarnica</i>	Seabeach Ragwort				S3	10	18.3 ± 7.0	NS
P	<i>Symphotrichum boreale</i>	Boreal Aster				S3	29	18.3 ± 7.0	NS
P	<i>Symphotrichum undulatum</i>	Wavy-leaved Aster				S3	7	77.9 ± 0.0	NS
P	<i>Symphotrichum ciliolatum</i>	Fringed Blue Aster				S3	24	33.1 ± 7.0	NS

Taxonomic Group	Scientific Name	Common Name	COSEWIC	SARA	Prov Legal Prot	Prov Rarity Rank	# recs	Distance (km)	Prov
P	<i>Betula pumila</i> var. <i>pumila</i>	Bog Birch				S3	1	73.8 ± 1.0	NS
P	<i>Betula michauxii</i>	Michaux's Dwarf Birch				S3	27	63.9 ± 0.0	NS
P	<i>Betula pumila</i>	Bog Birch				S3	10	61.7 ± 0.0	NS
P	<i>Cardamine parviflora</i>	Small-flowered Bittercress				S3	6	76.7 ± 0.0	NS
P	<i>Palustricodon aparinoides</i>	Marsh Bellflower				S3	41	16.7 ± 0.0	NS
P	<i>Mononeuria groenlandica</i>	Greenland Stitchwort				S3	25	72.3 ± 0.0	NS
P	<i>Sagina nodosa</i>	Knotted Pearlwort				S3	3	95.0 ± 1.0	NS
P	<i>Stellaria longifolia</i>	Long-leaved Starwort				S3	19	19.2 ± 0.0	NS
P	<i>Ceratophyllum echinatum</i>	Prickly Hornwort				S3	39	15.4 ± 0.0	NS
P	<i>Triosteum aurantiacum</i>	Orange-fruited Tinker's Weed				S3	66	16.9 ± 0.0	NS
P	<i>Viburnum edule</i>	Squashberry				S3	3	34.7 ± 0.0	NS
P	<i>Empetrum eamesii</i>	Pink Crowberry				S3	3	72.1 ± 5.0	PE
P	<i>Geranium bicknellii</i>	Bicknell's Crane's-bill				S3	12	25.4 ± 2.0	NS
P	<i>Myriophyllum verticillatum</i>	Whorled Water Milfoil				S3	12	45.7 ± 0.0	NS
P	<i>Epilobium strictum</i>	Downy Willowherb				S3	37	20.9 ± 5.0	NS
P	<i>Polygala sanguinea</i>	Blood Milkwort				S3	26	19.5 ± 1.0	NS
P	<i>Persicaria arifolia</i>	Halberd-leaved Tearthumb				S3	84	17.7 ± 0.0	NS
P	<i>Plantago rugelii</i>	Rugel's Plantain				S3	9	17.6 ± 0.0	NS
P	<i>Primula laurentiana</i>	Laurentian Primrose				S3	10	82.9 ± 0.0	NS
P	<i>Samolus parviflorus</i>	Seaside Brookweed				S3	14	29.7 ± 0.0	NS
P	<i>Pyrola minor</i>	Lesser Pyrola				S3	3	28.7 ± 0.0	NS
P	<i>Anemone virginiana</i>	Virginia Anemone				S3	17	23.8 ± 0.0	NS
P	<i>Galium labradoricum</i>	Labrador Bedstraw				S3	86	43.2 ± 0.0	NS
P	<i>Salix pedicellaris</i>	Bog Willow				S3	62	44.3 ± 0.0	NS
P	<i>Salix sericea</i>	Silky Willow				S3	1	68.1 ± 1.0	NS
P	<i>Saxifraga paniculata</i> ssp. <i>laestadii</i>	Laestadius' Saxifrage				S3	4	76.7 ± 1.0	NS
P	<i>Lindernia dubia</i>	Yellow-seeded False Pimperel				S3	51	20.8 ± 0.0	NS
P	<i>Laportea canadensis</i>	Canada Wood Nettle				S3	58	13.5 ± 0.0	NS
P	<i>Pilea pumila</i>	Dwarf Clearweed				S3	9	32.2 ± 0.0	NS
P	<i>Viola nephrophylla</i>	Northern Bog Violet				S3	10	16.0 ± 1.0	NS
P	<i>Carex bebbii</i>	Bebb's Sedge				S3	33	20.9 ± 0.0	NS
P	<i>Carex castanea</i>	Chestnut Sedge				S3	26	58.7 ± 0.0	NS
P	<i>Carex cryptolepis</i>	Hidden-scaled Sedge				S3	20	23.3 ± 10.0	NS
P	<i>Carex eburnea</i>	Bristle-leaved Sedge				S3	10	31.0 ± 0.0	NS
P	<i>Carex hirtifolia</i>	Pubescent Sedge				S3	54	16.8 ± 0.0	NS
P	<i>Carex lupulina</i>	Hop Sedge				S3	47	23.3 ± 10.0	NS
P	<i>Carex rosea</i>	Rosy Sedge				S3	42	16.8 ± 0.0	NS
P	<i>Carex swanii</i>	Swan's Sedge				S3	3	89.0 ± 0.0	NS
P	<i>Carex tenera</i>	Tender Sedge				S3	11	17.5 ± 0.0	NS
P	<i>Carex tribuloides</i>	Blunt Broom Sedge				S3	15	13.8 ± 0.0	NS
P	<i>Carex tuckermanii</i>	Tuckerman's Sedge				S3	48	16.7 ± 0.0	NS
P	<i>Carex atratiformis</i>	Scabrous Black Sedge				S3	3	66.7 ± 1.0	NS
P	<i>Eleocharis nitida</i>	Quill Spikerush				S3	13	43.5 ± 7.0	NS
P	<i>Eleocharis flavescens</i> var. <i>olivacea</i>	Bright-green Spikerush				S3	5	42.5 ± 0.0	NS
P	<i>Eriophorum gracile</i>	Slender Cottongrass				S3	54	21.2 ± 10.0	NS
P	<i>Juncus stygius</i> ssp. <i>americanus</i>	Moor Rush				S3	75	72.3 ± 0.0	NS
P	<i>Coeloglossum viride</i>	Long-bracted Frog Orchid				S3	2	24.8 ± 0.0	NS
P	<i>Cypripedium parviflorum</i>	Yellow Lady's-slipper				S3	552	47.9 ± 1.0	NS
P	<i>Neottia bifolia</i>	Southern Twayblade				S3	76	11.4 ± 0.0	NS
P	<i>Platanthera grandiflora</i>	Large Purple Fringed Orchid				S3	122	7.7 ± 0.0	NS
P	<i>Platanthera hookeri</i>	Hooker's Orchid				S3	24	25.1 ± 0.0	NS
P	<i>Dichanthelium linearifolium</i>	Narrow-leaved Panic Grass				S3	5	24.3 ± 0.0	NS
P	<i>Piptatheropsis canadensis</i>	Canada Ricegrass				S3	8	11.5 ± 1.0	NS

Taxonomic Group	Scientific Name	Common Name	COSEWIC	SARA	Prov Legal Prot	Prov Rarity Rank	# recs	Distance (km)	Prov
P	<i>Poa glauca</i>	Glaucous Blue Grass				S3	8	56.0 ± 0.0	NS
P	<i>Potamogeton praelongus</i>	White-stemmed Pondweed				S3	27	22.3 ± 1.0	NS
P	<i>Potamogeton richardsonii</i>	Richardson's Pondweed				S3	5	27.2 ± 7.0	NS
P	<i>Potamogeton zosteriformis</i>	Flat-stemmed Pondweed				S3	26	32.0 ± 0.0	NS
P	<i>Asplenium viride</i>	Green Spleenwort				S3	12	23.2 ± 7.0	NS
P	<i>Dryopteris fragrans</i>	Fragrant Wood Fern				S3	15	12.6 ± 4.0	NS
P	<i>Sceptridium dissectum</i>	Dissected Moonwort				S3	9	31.5 ± 5.0	NS
P	<i>Polypodium appalachianum</i>	Appalachian Polypody				S3	18	24.7 ± 0.0	NS
P	<i>Persicaria amphibia</i> var. <i>emersa</i>	Long-root Smartweed				S3?	3	58.7 ± 0.0	NS
P	<i>Spiranthes ochroleuca</i>	Yellow Ladies'-tresses				S3?	24	12.0 ± 0.0	NS
P	<i>Diphasiastrum x sabinifolium</i>	Savin-leaved Ground-cedar				S3?	12	14.7 ± 0.0	NS
P	<i>Bidens vulgata</i>	Tall Beggarticks				S3S4	7	21.4 ± 0.0	NS
P	<i>Erigeron hyssopifolius</i>	Hyssop-leaved Fleabane				S3S4	24	17.4 ± 0.0	NS
P	<i>Hieracium paniculatum</i>	Panicled Hawkweed				S3S4	17	26.4 ± 0.0	NS
P	<i>Bidens beckii</i>	Water Beggarticks				S3S4	29	18.4 ± 1.0	NS
P	<i>Packera paupercula</i>	Balsam Groundsel				S3S4	94	24.1 ± 0.0	NS
P	<i>Packera paupercula</i> var. <i>paupercula</i>	Balsam Groundsel				S3S4	1	78.7 ± 0.0	NS
P	<i>Atriplex glabriuscula</i> var. <i>franktonii</i>	Frankton's Saltbush				S3S4	17	38.1 ± 2.0	NS
P	<i>Shepherdia canadensis</i>	Soapberry				S3S4	101	74.7 ± 0.0	NS
P	<i>Vaccinium boreale</i>	Northern Blueberry				S3S4	4	59.1 ± 1.0	NS
P	<i>Vaccinium cespitosum</i>	Dwarf Bilberry				S3S4	59	25.7 ± 0.0	NS
P	<i>Vaccinium corymbosum</i>	Highbush Blueberry				S3S4	2	70.0 ± 0.0	NS
P	<i>Fagus grandifolia</i>	American Beech				S3S4	301	8.3 ± 0.0	NS
P	<i>Bartonia virginica</i>	Yellow Bartonia				S3S4	1	68.1 ± 7.0	NS
P	<i>Proserpinaca pectinata</i>	Comb-leaved Mermaidweed				S3S4	5	60.5 ± 1.0	NS
P	<i>Nuphar microphylla</i>	Small Yellow Pond-lily				S3S4	8	20.5 ± 1.0	NS
P	<i>Persicaria pensylvanica</i>	Pennsylvania Smartweed				S3S4	38	17.5 ± 0.0	NS
P	<i>Fallopia scandens</i>	Climbing False Buckwheat				S3S4	36	18.3 ± 7.0	NS
P	<i>Rumex pallidus</i>	Seabeach Dock				S3S4	1	91.0 ± 0.0	NS
P	<i>Pyrola asarifolia</i>	Pink Pyrola				S3S4	12	19.0 ± 1.0	NS
P	<i>Endotropis alnifolia</i>	alder-leaved buckthorn				S3S4	241	21.4 ± 0.0	NS
P	<i>Amelanchier spicata</i>	Running Serviceberry				S3S4	18	29.3 ± 5.0	NS
P	<i>Crataegus succulenta</i>	Fleshy Hawthorn				S3S4	4	87.7 ± 5.0	PE
P	<i>Fragaria vesca</i> ssp. <i>americana</i>	Woodland Strawberry				S3S4	70	16.7 ± 0.0	NS
P	<i>Fragaria vesca</i>	Woodland Strawberry				S3S4	2	36.1 ± 0.0	NS
P	<i>Galium aparine</i>	Common Bedstraw				S3S4	15	21.5 ± 0.0	NS
P	<i>Geocaulon lividum</i>	Northern Comandra				S3S4	11	35.7 ± 0.0	NS
P	<i>Limosella australis</i>	Southern Mudwort				S3S4	25	30.8 ± 0.0	NS
P	<i>Ulmus americana</i>	White Elm				S3S4	103	16.7 ± 0.0	NS
P	<i>Verbena hastata</i>	Blue Vervain				S3S4	211	16.0 ± 0.0	NS
P	<i>Viola sagittata</i> var. <i>ovata</i>	Arrow-Leaved Violet				S3S4	11	73.7 ± 0.0	NS
P	<i>Viola selkirkii</i>	Great-Spurred Violet				S3S4	9	24.8 ± 0.0	NS
P	<i>Symplocarpus foetidus</i>	Eastern Skunk Cabbage				S3S4	130	69.1 ± 0.0	NS
P	<i>Carex argyrantha</i>	Silvery-flowered Sedge				S3S4	7	76.6 ± 2.0	NS
P	<i>Triglochin gaspensis</i>	Gasp Arrowgrass				S3S4	2	78.2 ± 0.0	NB
P	<i>Juncus acuminatus</i>	Sharp-Fruit Rush				S3S4	7	42.4 ± 2.0	NS
P	<i>Juncus subcaudatus</i>	Woods-Rush				S3S4	21	17.8 ± 3.0	NS
P	<i>Luzula parviflora</i> ssp. <i>melanocarpa</i>	Black-fruited Woodrush				S3S4	5	40.5 ± 0.0	NS
P	<i>Goodyera repens</i>	Lesser Rattlesnake-plantain				S3S4	19	54.4 ± 100.0	NS
P	<i>Liparis loeselii</i>	Loesel's Twayblade				S3S4	18	10.5 ± 1.0	NS
P	<i>Platanthera obtusata</i>	Blunt-leaved Orchid				S3S4	6	36.9 ± 1.0	NS
P	<i>Platanthera orbiculata</i>	Small Round-leaved Orchid				S3S4	42	7.5 ± 7.0	NS
P	<i>Alopecurus aequalis</i>	Short-awned Foxtail				S3S4	28	20.1 ± 0.0	NS

Taxonomic Group	Scientific Name	Common Name	COSEWIC	SARA	Prov Legal Prot	Prov Rarity Rank	# recs	Distance (km)	Prov
P	<i>Dichanthelium clandestinum</i>	Deer-tongue Panic Grass				S3S4	156	49.2 ± 5.0	NS
P	<i>Panicum philadelphicum</i>	Philadelphia Panicgrass				S3S4	15	20.9 ± 0.0	NS
P	<i>Koeleria spicata</i>	Narrow False Oats				S3S4	17	23.8 ± 0.0	NS
P	<i>Asplenium trichomanes</i>	Maidenhair Spleenwort				S3S4	15	71.2 ± 1.0	NS
P	<i>Equisetum pratense</i>	Meadow Horsetail				S3S4	17	7.7 ± 0.0	NS
P	<i>Diphasiastrum complanatum</i>	Northern Ground-cedar				S3S4	20	14.5 ± 0.0	NS
P	<i>Diphasiastrum sitchense</i>	Sitka Ground-cedar				S3S4	5	17.0 ± 5.0	NS
P	<i>Huperzia appressa</i>	Mountain Firmoss				S3S4	18	7.7 ± 7.0	NS
P	<i>Sceptridium multifidum</i>	Leathery Moonwort				S3S4	11	37.0 ± 10.0	NS
P	<i>Botrychium matricariifolium</i>	Daisy-leaved Moonwort				S3S4	14	22.3 ± 1.0	NS
P	<i>Viola canadensis</i>	Canada Violet				SH	2	24.0 ± 7.0	NS

5.1 SOURCE BIBLIOGRAPHY (100 km)

The recipient of these data shall acknowledge the AC CDC and the data sources listed below in any documents, reports, publications or presentations, in which this dataset makes a significant contribution.

# recs	CITATION
14761	Morrison, Guy. 2011. Maritime Shorebird Survey (MSS) database. Canadian Wildlife Service, Ottawa, 15939 surveys. 86171 recs.
10513	Lepage, D. 2014. Maritime Breeding Bird Atlas Database. Bird Studies Canada, Sackville NB, 407,838 recs.
4456	Erskine, A.J. 1992. Maritime Breeding Bird Atlas Database. NS Museum & Nimbus Publ., Halifax, 82,125 recs.
4452	Pardieck, K.L., Ziolkowski Jr., D.J., Lutmerding, M., Aponte, V.I., and Hudson, M-A.R. 2020. North American Breeding Bird Survey Dataset 1966 - 2019: U.S. Geological Survey data release, https://doi.org/10.5066/P9J6QUF6
4023	Paquet, Julie. 2018. Atlantic Canada Shorebird Survey (ACSS) database 2012-2018. Environment Canada, Canadian Wildlife Service.
2158	Berrigan, L. 2019. Maritimes Marsh Monitoring Project 2013, 2014, 2016, 2017, and 2018 data. Bird Studies Canada, Sackville, NB.
1850	iNaturalist. 2020. iNaturalist Data Export 2020. iNaturalist.org and iNaturalist.ca, Web site: 128728 recs.
1818	eBird. 2020. eBird Basic Dataset. Version: EBD_relNov-2019. Ithaca, New York. Nov 2019, Cape Breton Bras d'Or Lakes Watershed subset. Cornell Lab of Ornithology.
1800	eBird. 2014. eBird Basic Dataset. Version: EBD_relNov-2014. Ithaca, New York. Nov 2014. Cornell Lab of Ornithology, 25036 recs.
923	SwiftWatch. 2022. Total Chimney Swift counts from roost watches for the duration of the SwiftWatch program (2011-2021). Birds Canada.
895	Patrick, A.; Horne, D.; Noseworthy, J. et. al. 2017. Field data for Nova Scotia and New Brunswick, 2015 and 2017. Nature Conservancy of Canada.
876	Eaton, S. 2014. Nova Scotia Wood Turtle Database. Environment and Climate Change Canada, 4843 recs.
622	Cameron, E. 2008. Canadian Gypsum Co. survey 2007-08. Conestoga-Rovers & Assoc., 623 recs.
577	Blaney, C.S.; Mazerolle, D.M.; Belliveau, A.B. 2015. Atlantic Canada Conservation Data Centre Fieldwork 2015. Atlantic Canada Conservation Data Centre, # recs.
516	Neily, T.H. & Pepper, C.; Toms, B. 2018. Nova Scotia lichen database [as of 2018-03]. Mersey Tobeatic Research Institute.
459	Paquet, Julie. 2019. Atlantic Canada Shorebird Survey ACSS database for 2019. Environment Canada, Canadian Wildlife Service.
442	Tranquilla, L. 2015. Maritimes Marsh Monitoring Project 2015 data. Bird Studies Canada, Sackville NB, 5062 recs.
412	Amirault, D.L. & Stewart, J. 2007. Piping Plover Database 1894-2006. Canadian Wildlife Service, Sackville, 3344 recs, 1228 new.
398	Benjamin, L.K. (compiler). 2007. Significant Habitat & Species Database. Nova Scotia Dept Natural Resources, 8439 recs.
373	Belliveau, A.G. 2020. E.C. Smith Herbarium and Atlantic Canada Conservation Data Centre Fieldwork 2019, 2020. E.C. Smith Herbarium.
368	Clayden, S. Digitization of Wolfgang Maass Nova Scotia forest lichen collections, 1964-2004. New Brunswick Museum. 2018.
358	Blaney, C.S.; Mazerolle, D.M. 2010. Fieldwork 2010. Atlantic Canada Conservation Data Centre. Sackville NB, 15508 recs.
332	Newell, R.E. 2000. E.C. Smith Herbarium Database. Acadia University, Wolfville NS, 7139 recs.
322	Newell, R.E. 2005. E.C. Smith Digital Herbarium. E.C. Smith Herbarium, Irving Biodiversity Collection, Acadia University, Web site: http://luxor.acadiu.ca/library/Herbarium/project/ . 582 recs.
274	Blaney, C.S.; Mazerolle, D.M. 2012. Fieldwork 2012. Atlantic Canada Conservation Data Centre, 13,278 recs.
267	Benjamin, L.K. (compiler). 2012. Significant Habitat & Species Database. Nova Scotia Dept Natural Resources, 4965 recs.
252	Blaney, C.S. & Spicer, C.D.; Popma, T.M.; Basquill, S.P. 2003. Vascular Plant Surveys of Northumberland Strait Rivers & Amherst Area Peatlands. Nova Scotia Museum Research Grant, 501 recs.
245	Neily, T.H. & Pepper, C.; Toms, B. 2013. Nova Scotia lichen location database. Mersey Tobeatic Research Institute, 1301 records.
244	Scott, F.W. 2002. Nova Scotia Herpetofauna Atlas Database. Acadia University, Wolfville NS, 8856 recs.
243	Blaney, C.S.; Mazerolle, D.M.; Belliveau, A.B. 2014. Atlantic Canada Conservation Data Centre Fieldwork 2014. Atlantic Canada Conservation Data Centre, # recs.
239	Chapman-Lam, C.J. 2022. Atlantic Canada Conservation Data Centre 2021 botanical fieldwork. Atlantic Canada Conservation Data Centre, 15099 recs.
221	Klymko, J. 2018. Maritimes Butterfly Atlas database. Atlantic Canada Conservation Data Centre.
217	Pronych, G. & Wilson, A. 1993. Atlas of Rare Vascular Plants in Nova Scotia. Nova Scotia Museum, Halifax NS, I:1-168, II:169-331. 1446 recs.
199	Churchill, J.L. 2018. Atlantic Canada Conservation Data Centre Fieldwork 2018. Atlantic Canada Conservation Data Centre, 907 recs.
199	LaPaix, R.W.; Crowell, M.J.; MacDonald, M. 2011. Stantec rare plant records, 2010-11. Stantec Consulting, 334 recs.
198	Churchill, J.L.; Klymko, J.D. 2015. Chignecto and Tintamarre National Wildlife Area Bird Surveys 2015. Atlantic Canada Conservation Data Centre, 2238 recs.
180	Blaney, C.S. & Mazerolle, D.M. 2011. Field data from NCC properties at Musquash Harbour NB & Goose Lake NS. Atlantic Canada Conservation Data Centre, 1739 recs.

# recs	CITATION
178	Bryson, I. 2013. Nova Scotia rare plant records. CBCL Ltd., 180 records.
177	Brunelle, P.-M. (compiler). 2009. ADIP/MDDS Odonata Database: data to 2006 inclusive. Atlantic Dragonfly Inventory Program (ADIP), 24200 recs.
166	Hicks, Andrew. 2009. Coastal Waterfowl Surveys Database, 2000-08. Canadian Wildlife Service, Sackville, 46488 recs (11149 non-zero).
157	Toms, B. 2018. Bat Species data from www.batconservation.ca for Nova Scotia. Mersey Tobeatic Research Institute, 547 Records.
156	Island Nature Trust. 2016. Farmland birds project. Mader, Shannon (ed.) .
154	Neily, T.H. 2017. Nova Scotia lichen records. Mersey Tobeatic Research Institute.
153	Belliveau, A.G. 2018. Atlantic Canada Conservation Data Centre Fieldwork 2017. Atlantic Canada Conservation Data Centre.
141	Pepper, C. 2013. 2013 rare bird and plant observations in Nova Scotia. , 181 records.
129	Manthorne, A. 2014. MaritimesSwiftwatch Project database 2013-2014. Bird Studies Canada, Sackville NB, 326 recs.
128	Wilhelm, S.I. et al. 2011. Colonial Waterbird Database. Canadian Wildlife Service, Sackville, 2698 sites, 9718 recs (8192 obs).
127	MacDonald, Haley. 2022. Updates to Fraxinus nigra observations on NCC Docherty's Brook property. Nature Conservancy of Canada.
123	Blaney, C.S.; Mazerolle, D.M.; Hill, N.M. 2011. Nova Scotia Crown Share Land Legacy Trust Fieldwork. Atlantic Canada Conservation Data Centre, 5022 recs.
123	Chapman, C.J. 2018. Atlantic Canada Conservation Data Centre botanical fieldwork 2018. Atlantic Canada Conservation Data Centre, 11171 recs.
116	Richardson, Leif. 2018. Maritimes Bombus records from various sources. Richardson, Leif.
115	Blaney, C.S. 2000. Fieldwork 2000. Atlantic Canada Conservation Data Centre. Sackville NB, 1265 recs.
115	Blaney, C.S. 2020. Sean Blaney 2020 field data. Atlantic Canada Conservation Data Centre, 4407 records.
115	Munro, Marian K. Nova Scotia Provincial Museum of Natural History Herbarium Database. Nova Scotia Provincial Museum of Natural History, Halifax, Nova Scotia. 2013.
113	Chapman-Lam, C.J. 2021. Atlantic Canada Conservation Data Centre 2020 botanical fieldwork. Atlantic Canada Conservation Data Centre, 17309 recs.
109	Bryson, I.C. 2020. Nova Scotia flora and lichen observations 2020. Nova Scotia Environment, 139 recs.
107	McAlpine, D.F. 1998. NBM Science Collections databases to 1998. New Brunswick Museum, Saint John NB, 241 recs.
101	Churchill, J.L.; Walker, J. 2017. Species at Risk Surveys at Correctional Services Canada Properties in Nova Scotia and New Brunswick. Atlantic Canada Conservation Data Centre.
99	Belliveau, A.G. 2021. E.C. Smith Herbarium and Atlantic Canada Conservation Data Centre Fieldwork 2021. E.C. Smith Herbarium.
97	Cameron, R.P. 2009. Cyanolichen database. Nova Scotia Environment & Labour, 1724 recs.
96	LaPaix, R.W.; Crowell, M.J.; MacDonald, M.; Neily, T.D.; Quinn, G. 2017. Stantec Nova Scotia rare plant records, 2012-2016. Stantec Consulting.
93	Munro, Marian K. Tracked lichen specimens, Nova Scotia Provincial Museum of Natural History Herbarium. Atlantic Canada Conservation Data Centre. 2019.
88	iNaturalist. 2018. iNaturalist Data Export 2018. iNaturalist.org and iNaturalist.ca, Web site: 11700 recs.
87	McNeil, J.A. 2018. Wood Turtle records, 2018. Mersey Tobeatic Research Institute, 68 recs.
85	Mazerolle, D.M. 2018. Atlantic Canada Conservation Data Centre botanical fieldwork 2018. Atlantic Canada Conservation Data Centre, 13515 recs.
81	Belliveau, A.G. 2016. Atlantic Canada Conservation Data Centre Fieldwork 2016. Atlantic Canada Conservation Data Centre, 10695 recs.
80	Nature Conservancy of Canada. 2022. NCC Field data for Nova Scotia. Nature Conservancy of Canada.
77	Staicer, C. 2021. Additional compiled Nova Scotia Species at Risk bird records, 2005-2020. Dalhousie University.
76	Zinck, M. & Roland, A.E. 1998. Roland's Flora of Nova Scotia. Nova Scotia Museum, 3rd ed., rev. M. Zinck; 2 Vol., 1297 pp.
74	Burns, L. 2013. Personal communication concerning bat occurrence on PEI. Winter 2013. Pers. comm.
71	Cameron, R.P. 2011. Lichen observations, 2011. Nova Scotia Environment & Labour, 731 recs.
71	Catling, P.M., Erskine, D.S. & MacLaren, R.B. 1985. The Plants of Prince Edward Island with new records, nomenclatural changes & corrections & deletions, 1st Ed. Research Branch, Agriculture Canada, Ottawa, Publication 1798. 22pp.
71	Staicer, C. & Bliss, S.; Achenbach, L. 2017. Occurrences of tracked breeding birds in forested wetlands. , 303 records.
70	Blaney, C.S. 2016. Atlantic Canada Conservation Data Centre Fieldwork 2016. Atlantic Canada Conservation Data Centre, 6719 recs.
68	Blaney, C.S.; Mazerolle, D.M.; Belliveau, A.B. 2013. Atlantic Canada Conservation Data Centre Fieldwork 2013. Atlantic Canada Conservation Data Centre, 9000+ recs.
67	Blaney, C.S.; Mazerolle, D.M.; Oberndorfer, E. 2007. Fieldwork 2007. Atlantic Canada Conservation Data Centre. Sackville NB, 13770 recs.
65	Belliveau, A.G. 2014. Plant Records from Southern and Central Nova Scotia. Atlantic Canada Conservation Data Centre, 919 recs.
65	Hagerman, Christianne. 2022. Wisqoq and Eastern White Cedar field work. E.C. Smith Herbarium, Acadia University.
64	Roland, A.E. & Smith, E.C. 1969. The Flora of Nova Scotia, 1st Ed. Nova Scotia Museum, Halifax, 743pp.
64	Tims, J. & Craig, N. 1995. Environmentally Significant Areas in New Brunswick (NBESA). NB Dept of Environment & Nature Trust of New Brunswick Inc, 6042 recs. https://doi.org/10.1037/arc0000014 .
62	Belland, R.J. Maritimes moss records from various herbarium databases. 2014.
62	Layberry, R.A. & Hall, P.W., LaFontaine, J.D. 1998. The Butterflies of Canada. University of Toronto Press. 280 pp+plates.
61	e-Butterfly. 2016. Export of Maritimes records and photos. Maxim Larrivee, Sambo Zhang (ed.) e-butterfly.org.
61	Nussey, Pat & NCC staff. 2019. AEI tracked species records, 2016-2019. Chapman, C.J. (ed.) Atlantic Canada Conservation Data Centre, 333.
60	Klymko, J.J.D. 2012. Insect fieldwork & submissions, 2011. Atlantic Canada Conservation Data Centre. Sackville NB, 760 recs.
59	e-Butterfly. 2019. Export of Maritimes records and photos. McFarland, K. (ed.) e-butterfly.org.
58	Stewart, J.I. 2010. Peregrine Falcon Surveys in New Brunswick, 2002-09. Canadian Wildlife Service, Sackville, 58 recs.
57	Glen, W. 1991. 1991 Prince Edward Island Forest Biomass Inventory Data. PEI Dept of Energy and Forestry, 10059 recs.
56	Patrick, Allison. 2021. Animal and plant records from NCC properties from 2019 and 2020. Nature Conservancy Canada.
55	iNaturalist. 2020. iNaturalist butterfly records selected for the Maritimes Butterfly Atlas. iNaturalist.
55	Phinney, Lori. 2020. Pre- and post White-nose Syndrome bat acoustic monitoring, NS. Mersey Tobeatic Research Institute, 1279 recs.
54	Amirault, D.L. & McKnight, J. 2003. Piping Plover Database 1991-2003. Canadian Wildlife Service, Sackville, unpublished data. 7 recs.
52	Blaney, C.S. 2018. Atlantic Canada Conservation Data Centre Fieldwork 2018. Atlantic Canada Conservation Data Centre.
51	Blaney, C.S.; Spicer, C.D.; Rothfels, C. 2004. Fieldwork 2004. Atlantic Canada Conservation Data Centre. Sackville NB, 1343 recs.
51	Canadian Wildlife Service, Dartmouth. 2010. Piping Plover censuses 2007-09, 304 recs.

# recs	CITATION
50	Hall, R.A. 2003. NS Freshwater Mussel Fieldwork. Nova Scotia Dept Natural Resources, 189 recs.
50	Staicer, Cindy. 2022. 2021 Landbird Species at Risk observations. Dalhousie University.
49	Hall, R.A. 2001. S. NS Freshwater Mussel Fieldwork. Nova Scotia Dept Natural Resources, 178 recs.
48	Blaney, C.S.; Spicer, C.D.; Popma, T.M.; Hanel, C. 2002. Fieldwork 2002. Atlantic Canada Conservation Data Centre. Sackville NB, 2252 recs.
48	MacDonald, E.C. 2018. CWS Piping Plover Census, 2010-2017. Canadian Wildlife Service, 672 recs.
48	Porter, Caitlin et al. 2022. 2021 wildlife observations from the Caemmerer NCC site. Atlantic Canada Conservation Data Centre.
47	Brazner, J. 2016. Nova Scotia Forested Wetland Bird Surveys. Nova Scotia Department of Lands and Forestry.
46	Blaney, C.S. 2003. Fieldwork 2003. Atlantic Canada Conservation Data Centre. Sackville NB, 1042 recs.
46	Toms, Brad & Pepper, Chris; Neily, Tom. 2022. Nova Scotia lichen database [as of 2022-04]. Mersey Tobeatic Research Institute.
45	Spicer, C.D. & Harries, H. 2001. Mount Allison Herbarium Specimens. Mount Allison University, 128 recs.
43	Blaney, C.S.; Spicer, C.D. 2001. Fieldwork 2001. Atlantic Canada Conservation Data Centre. Sackville NB, 981 recs.
42	Cameron, R.P. 2009. Erioderma pedicellatum database, 1979-2008. Dept Environment & Labour, 103 recs.
42	Chapman, C.J. 2019. Atlantic Canada Conservation Data Centre 2019 botanical fieldwork. Atlantic Canada Conservation Data Centre, 11729 recs.
41	Hubley, Nicole. 2022. Monarch (<i>Danaus plexippus</i>) records submitted to MTRI from the 2021 field season. Mersey Tobeatic Research Institute.
40	Benjamin, L.K. (compiler). 2001. Significant Habitat & Species Database. Nova Scotia Dept of Natural Resources, 15 spp, 224 recs.
40	Blaney, C.S. 2017. Atlantic Canada Conservation Data Centre Fieldwork 2017. Atlantic Canada Conservation Data Centre.
40	Blaney, C.S.; Mazerolle, D.M. 2008. Fieldwork 2008. Atlantic Canada Conservation Data Centre. Sackville NB, 13343 recs.
40	Blaney, C.S.; Mazerolle, D.M.; Klymko, J; Spicer, C.D. 2006. Fieldwork 2006. Atlantic Canada Conservation Data Centre. Sackville NB, 8399 recs.
40	Cameron, E. 2007. Canadian Gypsum Co. survey 2005-07. Dillon Consulting Ltd, 40 recs.
40	NatureServe Canada. 2019. iNaturalist Maritimes Butterfly Records. iNaturalist.org and iNaturalist.ca.
40	Neily, T.H. & Pepper, C.; Toms, B. 2015. Nova Scotia lichen location database [as of 2015-02-15]. Mersey Tobeatic Research Institute, 1691 records.
38	Thomas, P. 2018. CSC Dorchester Bobolink Survey. Environment Canada, Canadian Wildlife Service.
37	Klymko, J. 2016. Atlantic Canada Conservation Data Centre Fieldwork 2016. Atlantic Canada Conservation Data Centre.
35	Churchill, J.L. 2018. Atlantic Canada Conservation Data Centre Fieldwork 2017. Atlantic Canada Conservation Data Centre, 2318 recs.
35	MacDonald, E.C. 2018. Piping Plover nest records from 2010-2017. Canadian Wildlife Service.
35	Mazerolle, D.M. 2017. Atlantic Canada Conservation Data Centre Fieldwork 2017. Atlantic Canada Conservation Data Centre.
35	Pepper, C. 2021. Rare bird, plant and mammal observations in Nova Scotia, 2017-2021.
34	Neily, T.H. & Pepper, C.; Toms, B. 2020. Nova Scotia lichen database [as of 2020-03-18]. Mersey Tobeatic Research Institute.
33	Arsenault, M. 2019. Cormorant colony nest counts. PE Department of Communities, Land, and Environment.
32	Belliveau, A.G. 2018. E.C. Smith Herbarium and Atlantic Canada Conservation Data Centre Fieldwork 2018. E.C. Smith Herbarium, 6226 recs.
32	Klymko, John. 2022. Atlantic Canada Conservation Data Centre zoological fieldwork 2021. Atlantic Canada Conservation Data Centre.
30	Mersey Tobeatic Research Institute. 2021. 2020 Monarch records from the MTRI monitoring program. Mersey Tobeatic Research Institute, 72 records.
30	Sollows, M.C., 2008. NBM Science Collections databases: mammals. New Brunswick Museum, Saint John NB, download Jan. 2008, 4983 recs.
28	Erskine, A.J. 1999. Maritime Nest Records Scheme (MNRS) 1937-1999. Canadian Wildlife Service, Sackville, 313 recs.
28	Neily, T.H. 2019. Tom Neily NS Bryophyte records (2009-2013). T.H. Neily, Atlantic Canada Conservation Data Centre, 1029 specimen records.
28	Pepper, Chris. 2012. Observations of breeding Canada Warbler's along the Eastern Shore, NS. Pers. comm. to S. Blaney, Jan. 20, 28 recs.
27	Ogden, J. NS DNR Butterfly Collection Dataset. Nova Scotia Department of Natural Resources. 2014.
26	Porter, Caitlin. 2021. Field data for 2020 in various locations across the Maritimes. Atlantic Canada Conservation Data Centre, 3977 records.
26	Westwood, A., Staicer, C. 2016. Nova Scotia landbird Species at Risk observations. Dalhousie University.
25	LaPaix, Rich. 2022. Rare species observations, 2018-2022. Nova Scotia Nature Trust.
25	Popma, T.M. 2003. Fieldwork 2003. Atlantic Canada Conservation Data Centre. Sackville NB, 113 recs.
24	Archibald, D.R. 2003. NS Freshwater Mussel Fieldwork. Nova Scotia Dept Natural Resources, 213 recs.
24	Belliveau, A.G. 2021. New Black ash site records near Kentville, NS. Acadia University, 47 records.
24	Cameron, R.P. 2018. <i>Degelia plumbea</i> records. Nova Scotia Environment.
24	Powell, B.C. 1967. Female sexual cycles of <i>Chrysemys picta</i> & <i>Clemmys insculpta</i> in Nova Scotia. Can. Field-Nat., 81:134-139. 26 recs.
24	Wallace, S. 2020. Stewardship Department species occurrence data on NTNBN preserves. Nature Trust of New Brunswick.
23	Benjamin, L.K. 2011. NSDNR fieldwork & consultant reports 1997, 2009-10. Nova Scotia Dept Natural Resources, 85 recs.
23	Blaney, C.S.; Spicer, C.D.; Mazerolle, D.M. 2005. Fieldwork 2005. Atlantic Canada Conservation Data Centre. Sackville NB, 2333 recs.
23	Churchill, J.L. 2020. Atlantic Canada Conservation Data Centre Fieldwork 2020. Atlantic Canada Conservation Data Centre, 1083 recs.
23	Erskine, D. 1960. The plants of Prince Edward Island, 1st Ed. Research Branch, Agriculture Canada, Ottawa., Publication 1088. 1238 recs.
22	Klymko, J.J.D.; Robinson, S.L. 2012. 2012 field data. Atlantic Canada Conservation Data Centre, 447 recs.
22	Nelly, T.H. 2006. <i>Cypripedium arietinum</i> in Hants Co. Pers. comm. to C.S. Blaney. 22 recs, 22 recs.
21	Belliveau, A. 2013. Rare species records from Nova Scotia. Mersey Tobeatic Research Institute, 296 records. 296 recs.
21	Churchill, J.L., Klymko, J.D.D. 2016. Atlantic Canada Conservation Data Centre Fieldwork 2016. Atlantic Canada Conservation Data Centre.
21	Curley, F.R. 2005. PEF&W Collection 2003-04. PEI Fish & Wildlife Div., 716 recs.
21	Manthorne, A. 2019. Incidental aerial insectivore observations. Birds Canada.
20	Ferguson, D.C. 1954. The Lepidoptera of Nova Scotia. Part I, macrolepidoptera. Proceedings of the Nova Scotian Institute of Science, 23(3), 161-375.
20	Haughian, Sean. 2021. Update to lichen data from 2017-2021. Nova Scotia Museum.
20	Klymko, J.J.D. 2016. 2015 field data. Atlantic Canada Conservation Data Centre.

# recs	CITATION
20	Phinney, Lori; Toms, Brad; et. al. 2016. Bank Swallows (<i>Riparia riparia</i>) in Nova Scotia: inventory and assessment of colonies. Merser Tobeatic Research Institute, 25 recs.
20	Porter, C.J.M. 2014. Field work data 2007-2014. Nova Scotia Nature Trust, 96 recs.
19	Godbout, V. 2002. SAR Inventory: Birds in Fort Beauséjour NHS. Parks Canada, Atlantic, SARINV02-01. 202 recs.
19	NS DNR. 2017. Black Ash records from NS DNR Permanent Sample Plots (PSPs), 1965-2016. NS Dept of Natural Resources.
18	Klymko, J.J.D. 2018. 2017 field data. Atlantic Canada Conservation Data Centre.
18	Munro, Marian K. Nova Scotia Provincial Museum of Natural History Herbarium Database. Nova Scotia Provincial Museum of Natural History, Halifax, Nova Scotia. 2014.
18	Ogden, K. Nova Scotia Museum butterfly specimen database. Nova Scotia Museum. 2017.
17	Anderson, Frances; Neily, Tom. 2010. A Reconnaissance Level Survey of Calciphilous Lichens in Selected Karst Topography in Nova Scotia with Notes on Incidental Bryophytes. Mersey Tobeatic Research Institute.
17	Cameron, R.P. 2014. 2013-14 rare species field data. Nova Scotia Department of Environment, 35 recs.
17	Neily, T.H. 2010. Erioderma pedicellatum records 2005-09. Mersey Tobeatic Research Institute, 67 recs.
16	McNeil, J.A. 2016. Blandings Turtle (<i>Emydoidea blandingii</i>), Eastern Ribbonsnake (<i>Thamnophis sauritus</i>), Wood Turtle (<i>Glyptemys insculpta</i>), and Snapping Turtle (<i>Chelydra serpentina</i>) sightings, 2016. Mersey Tobeatic Research Institute, 774 records.
16	Neily, T.H. & Pepper, C. 2020. Nova Scotia SMP lichen surveys 2020. Mersey Tobeatic Research Institute.
16	Richardson, D., Anderson, F., Cameron, R., McMullin, T., Clayden, S. 2014. Field Work Report on Black Foam Lichen (<i>Anzia colpodes</i>). COSEWIC.
15	Blaney, C.S. 2019. Sean Blaney 2019 field data. Atlantic Canada Conservation Data Centre, 4407 records.
15	Bryson, I. 2020. Nova Scotia and Newfoundland rare species observations, 2018-2020. Nova Scotia Environment.
15	Cameron, R.P. 2013. 2013 rare species field data. Nova Scotia Department of Environment, 71 recs.
15	Chiasson, R. 2018. Breeding bird observations from NBWTF project. pers. comm. to S. Blaney.
15	Neily, T. H. 2018. Lichen and Bryophyte records, AEI 2017-2018. Tom Neily; Atlantic Canada Conservation Data Centre.
15	Nova Scotia Nature Trust. 2013. Nova Scotia Nature Trust 2013 Species records. Nova Scotia Nature Trust, 95 recs.
14	Benedict, B. Connell Herbarium Specimens (Data) . University New Brunswick, Fredericton. 2003.
14	Blaney, C.S.; Mazerolle, D.M. 2011. Fieldwork 2011. Atlantic Canada Conservation Data Centre. Sackville NB.
14	Gilhen, J. 1984. Amphibians & Reptiles of Nova Scotia, 1st Ed. Nova Scotia Museum, 164pp.
14	McMullin, R.T. 2022. Maritimes lichen records. Canadian Museum of Nature.
13	Blaney, C.S.; Mazerolle, D.M. 2009. Fieldwork 2009. Atlantic Canada Conservation Data Centre. Sackville NB, 13395 recs.
13	Chaput, G. 2002. Atlantic Salmon: Maritime Provinces Overview for 2001. Dept of Fisheries & Oceans, Atlantic Region, Science Stock Status Report D3-14. 39 recs.
13	Neily, T.H. 2012. 2012 Erioderma pedicellatum records in Nova Scotia.
13	Nova Scotia Nature Trust. 2014. Lady'slipper records from Saint Croix Nova Scotia, JLC Ed. Nova Scotia Nature Trust.
12	Basquill, S.P. 2012. 2012 rare vascular plant field data. Nova Scotia Department of Natural Resources, 37 recs.
12	eBird. 2021. eBird Basic Dataset. Version: EBD_relOct-2020. Ithaca, New York. Oct 2020, Prince Edward Island Bird SAR subset. Cornell Lab of Ornithology.
12	Feltham, Carter. 2022. Monarch (<i>Danaus plexippus</i>) and Milkweed MTRI records from the 2022 Field Season. Mersey Tobeatic Research Institute.
12	Klymko, J. Dataset of butterfly records at the New Brunswick Museum not yet accessioned by the museum. Atlantic Canada Conservation Data Centre. 2016.
11	Doucet, D.A. 2009. Census of Globally Rare, Endemic Butterflies of Nova Scotia Gulf of St Lawrence Salt Marshes. Nova Scotia Dept of Natural Resources, Species at Risk, 155 recs.
11	Adams, J. & Herman, T.B. 1998. Thesis, Unpublished map of <i>C. insculpta</i> sightings. Acadia University, Wolfville NS, 88 recs.
10	Basquill, S.P. 2003. Fieldwork 2003. Atlantic Canada Conservation Data Centre, Sackville NB, 69 recs.
10	Bateman, M.C. 2001. Coastal Waterfowl Surveys Database, 1965-2001. Canadian Wildlife Service, Sackville, 667 recs.
10	Cameron, R.P. 2017. 2017 rare species field data. Nova Scotia Environment, 64 recs.
10	Clayden, S.R. 1998. NBM Science Collections databases: vascular plants. New Brunswick Museum, Saint John NB, 19759 recs.
10	Goltz, J.P. & Bishop, G. 2005. Confidential supplement to Status Report on Prototype Quillwort (<i>Isoetes prototypus</i>). Committee on the Status of Endangered Wildlife in Canada, 111 recs.
9	Benedict, B. Connell Herbarium Specimens. University New Brunswick, Fredericton. 2003.
9	Benjamin, L.K. 2006. <i>Cyrtopodium arietinum</i> . Pers. comm. to D. Mazerolle. 9 recs, 9 recs.
9	Benjamin, L.K. 2012. NSDNR fieldwork & consultant reports 2008-2012. Nova Scotia Dept Natural Resources, 196 recs.
9	Blaney, C.S. Miscellaneous specimens received by ACCDC (botany). Various persons. 2001-08.
9	Cameron, R.P. 2005. Erioderma pedicellatum unpublished data. NS Dept of Environment, 9 recs.
9	Cameron, R.P. 2006. Erioderma pedicellatum 2006 field data. NS Dept of Environment, 9 recs.
9	Chapman, C.N. (Cody). 2020. Nova Scotia Black Ash (<i>Fraxinus nigra</i>) field observations by Confederacy of Mainland Mi'kmaq. Forestry Program, Confederacy of Mainland Mi'kmaq.
9	Doucet, D.A. 2007. Lepidopteran Records, 1988-2006. Doucet, 700 recs.
9	Downes, C. 1998-2000. Breeding Bird Survey Data. Canadian Wildlife Service, Ottawa, 111 recs.
9	Hughes, Cory. 2020. Atlantic Forestry Centre <i>Coccinella transversoguttata</i> collections. Canadian Forest Service, Atlantic Forestry Centre.
9	Webster, R.P. Atlantic Forestry Centre Insect Collection, Maritimes butterfly records. Natural Resources Canada. 2014.
8	e-Butterfly. 2018. Selected Maritimes butterfly records from 2016 and 2017. Maxim Larrivee, Sambo Zhang (ed.) e-butterfly.org.
8	Hill, N.M. 1994. Status report on the Long's bulrush <i>Scirpus longii</i> in Canada. Committee on the Status of Endangered Wildlife in Canada, 7 recs.
8	Holder, M.L.; Kingsley, A.L. 2000. Kingsley and Holder observations from 2000 field work.
8	King, Katie; Jean, Samuel. 2021. Black ash observations near Booklyn, NS. E. C. Smith Herbarium.
8	Sollows, M.C., 2009. NBM Science Collections databases: molluscs. New Brunswick Museum, Saint John NB, download Jan. 2009, 6951 recs (2957 in Atlantic Canada).
7	Cameron-MacMillan, Maureen. 2020. Northern Goshawk Nests in Eastern Nova Scotia, as of November, 2020. Nova Scotia Department of Lands and Forestry.
7	Cameron, B. 2006. <i>Hepatica americana</i> Survey at Scotia Mine Site in Gays River, and Discovery of Three Yellow-listed Species. Conestoga-Rovers and Associates, (a consulting firm), october 25. 7 recs.
7	Harding, R.W. 2008. Harding Personal Insect Collection 1999-2007. R.W. Harding, 309 recs.
7	O'Neil, S. 1998. Atlantic Salmon: Northumberland Strait Nova Scotia part of SFA 18. Dept of Fisheries & Oceans, Atlantic Region, Science. Stock Status Report D3-08. 9 recs.

# recs	CITATION
6	Benjamin, L.K. 2009. Boreal Felt Lichen, Mountain Avens, Orchid and other recent records. Nova Scotia Dept Natural Resources, 105 recs.
6	Curley, F.R. 2007. PEF&W Collection. PEI Fish & Wildlife Div., 199 recs.
6	Hall, R. 2008. Rare plant records in old fieldbook notes from Truro area. Pers. comm. to C.S. Blaney. 6 recs, 6 recs.
6	Klymko, J. 2019. Atlantic Canada Conservation Data Centre zoological fieldwork 2018. Atlantic Canada Conservation Data Centre.
6	Klymko, J. 2021. Atlantic Canada Conservation Data Centre zoological fieldwork 2020. Atlantic Canada Conservation Data Centre.
6	Matthew Smith. 2010. Field trip report from Avon Caving Club outlining the discovery of <i>Cyripedium arietinum</i> and <i>Hepatica nobilis</i> populations. Public Works and Government Services Canada.
6	Mazerolle, D.M. 2020. Atlantic Canada Conservation Data Centre botanical fieldwork 2019. Atlantic Canada Conservation Data Centre.
6	Nova Scotia Nature Trust. 2022. Ram's Head Lady Slipper observations from 2015 and 2019. , 6 records.
6	Pulsifer, M.D. 2002. NS Freshwater Mussel Fieldwork. Nova Scotia Dept Natural Resources, 369 recs.
6	Richardson, D., Anderson, F., Cameron, R, Pepper, C., Clayden, S. 2015. Field Work Report on the Wrinkled Shingle lichen (<i>Pannaria lurida</i>). COSEWIC.
6	Speers, L. 2008. Butterflies of Canada database: New Brunswick 1897-1999. Agriculture & Agri-Food Canada, Biological Resources Program, Ottawa, 2048 recs.
6	Stevens, C. 1999. Cam Stevens field data from PEI vegetation plots. Sent along with specimens to C.S. Blaney. UNB masters research project, 732 recs.
6	White, S. 2019. Notable species sightings, 2018. East Coast Aquatics.
5	Bagnell, B.A. 2001. New Brunswick Bryophyte Occurrences. B&B Botanical, Sussex, 478 recs.
5	Cameron, R.P. 2012. Additional rare plant records, 2009. , 7 recs.
5	Carter, Jeff; Churchill, J.; Churchill, L.; Churchill, L. 2020. Bank Swallow colony Scots Bay, NS. Atlantic Canada Conservation Data Centre.
5	Daury, R.W. & Bateman, M.C. 1996. The Barrow's Goldeneye (<i>Bucephala islandica</i>) in the Atlantic Provinces and Maine. Canadian Wildlife Service, Sackville, 47pp.
5	Giberson, D. 2008. UPEI Insect Collection. University of Prince Edward Island, 157 recs.
5	Klymko, J. Butterfly records at the Nova Scotia Museum not yet accessioned by the museum. Atlantic Canada Conservation Data Centre. 2017.
5	Klymko, J.J.D.; Robinson, S.L. 2014. 2013 field data. Atlantic Canada Conservation Data Centre.
5	Majka, C.G. 2008. Lepidoptera at St Patricks, 1993-2007. Pers. comm. to R. Curley, 8 Jan. 29 recs, 29 recs.
5	Mazerolle, D.M. 2016. Atlantic Canada Conservation Data Centre Fieldwork 2017. Atlantic Canada Conservation Data Centre.
5	Neily, T.H. Tom Neily NS Sphagnum records (2009-2014). T.H. Neily, Atlantic Canada Conservation Data Centre. 2019.
5	Olsen, R. Herbarium Specimens. Nova Scotia Agricultural College, Truro. 2003.
5	Pike, E., Tingley, S. & Christie, D.S. 2000. Nature NB Listserve. University of New Brunswick, listserv.unb.ca/archives/naturenb. 68 recs.
5	Sabine, D.L. 2013. Dwaine Sabine butterfly records, 2009 and earlier.
5	Smith, M.E.M. 2008. AgCan Collection. Agriculture Canada, Charlottetown PE, 44 recs.
5	Tingley, S. (compiler). 2001. Butterflies of New Brunswick. , Web site: www.geocities.com/Yosemite/8425/butrflly . 142 recs.
5	Towell, C. 2014. 2014 Northern Goshawk and Common Nighthawk email reports, NS. NS Department of Natural Resources.
5	Walker, J. 2017. Bird inventories at French River, NS, and Memramcook, NB, for Nature Conservancy of Canada. Pers. comm. to AC CDC.
5	Webster, R.P. & Edsall, J. 2007. 2005 New Brunswick Rare Butterfly Survey. Environmental Trust Fund, unpublished report, 232 recs.
5	Wilhelm, S.I. et al. 2019. Colonial Waterbird Database. Canadian Wildlife Service.
4	Belland, R.J. 2012. PEI moss records from Devonian Botanical Garden. DBG Cryptogam Database, Web site: https://secure.devonian.ualberta.ca/bryo_search.php 748 recs.
4	Benjamin, L.K. 2009. NSDNR Fieldwork & Consultants Reports. Nova Scotia Dept Natural Resources, 143 recs.
4	Bredin, K.A. 2002. NS Freshwater Mussel Fieldwork. Atlantic Canada Conservation Data Center, 30 recs.
4	Cody, W.J. 2003. Nova Scotia specimens of <i>Equisetum pratense</i> at the DAO herbarium in Ottawa. , Pers. comm. to C.S. Blaney. 4 recs.
4	Forsythe, B. 2006. <i>Cyripedium arietinum</i> at Meadow Pond, Hants Co. Pers. comm. to C.S. Blaney. 4 recs, 4 recs.
4	McNeil, J.A. 2020. Snapping Turtle and Eastern Painted Turtle records, 2020. Mersey Tobeatic Research Institute.
4	Mills, Pamela. 2007. <i>Iva frutescens</i> records. Nova Scotia Dept of Natural Resources, Wildlife Div. Pers. comm. to S. Basquil, 4 recs.
4	O'Neil, S. 1998. Atlantic Salmon: Eastern Shore Nova Scotia SFA 20. Dept of Fisheries & Oceans, Atlantic Region, Science. Stock Status Report D3-10. 4 recs.
4	Plissner, J.H. & Haig, S.M. 1997. 1996 International piping plover census. US Geological Survey, Corvallis OR, 231 pp.
4	Standley, L.A. 2002. <i>Carex haydenii</i> in Nova Scotia. , Pers. comm. to C.S. Blaney. 4 recs.
3	Atlantic Canada Bank Swallow Working Group. 2022. 2021 Bank Swallow colony records. Birds Canada.
3	Basset, I.J. & Crompton, C.W. 1978. The Genus <i>Suaeda</i> (Chenopodiaceae) in Canada. Canadian Journal of Botany, 56: 581-591.
3	Brunelle, P.-M. (compiler). 2010. ADIP/MDDS Odonata Database: NB, NS Update 1900-09. Atlantic Dragonfly Inventory Program (ADIP), 935 recs.
3	Calhoun, J.C. Butterfly records databased at the McGuire Center for Lepidoptera and Biodiversity. Calhoun, J.C. 2020.
3	Cameron, R.P. 2012. Rob Cameron 2012 vascular plant data. NS Department of Environment, 30 recs.
3	Chapman, Cody. Unreported Species at Risk Records across Nova Scotia. Chapman, Cody, 5 records.
3	Chiasson, Roland. 2017. New Brunswick Breeding bird observations from NBWTF project. pers. comm. to J. Churchill.
3	Clayden, S.R. 2007. NBM Science Collections databases: vascular plants. New Brunswick Museum, Saint John NB, download Mar. 2007, 6914 recs.
3	Doubt, J. 2013. Email to Sean Blaney with Nova Scotia records of <i>Fissidens exilis</i> at Canadian Museum of Nature. pers. comm., 3 records.
3	Edsall, J. 2001. Lepidopteran records in New Brunswick, 1997-99. , Pers. comm. to K.A. Bredin. 91 recs.
3	Frittaion, C. 2012. NSNT 2012 Field Observations. Nova Scotia Nature Trust, Pers comm. to S. Blaney Feb. 7, 34 recs.
3	Hinds, H.R. 1986. Notes on New Brunswick plant collections. Connell Memorial Herbarium, unpubl, 739 recs.
3	Klymko, J.J.D. 2011. Insect fieldwork & submissions, 2010. Atlantic Canada Conservation Data Centre. Sackville NB, 742 recs.
3	McMullin, R.T. 2015. Prince Edward Island's lichen biodiversity and proposed conservation status in a report prepared for the province of PEI. Biodiversity Institute of Ontario Herbarium, University of Guelph, 776 records.
3	Mersey Tobeatic Research Institute. 2022. Nova Scotia Bobolink observations. pers. comm. to J. Churchill.
3	Nature Trust of New Brunswick. 2021. Nature Trust of New Brunswick site inventory data submitted in April 2021. Nature Trust of New Brunswick, 2189 records.

# recs	CITATION
3	Neily, T.H. & Pepper, C.; Toms, B. 2020. Nova Scotia lichen database [as of 2020-05-25]. Mersey Tobeatic Research Institute, 668 recs.
3	Neily, T.H. 2013. Email communication to Sean Blaney regarding <i>Listera australis</i> observations made from 2007 to 2011 in Nova Scotia. , 50.
3	Oldham, M.J. 2000. Oldham database records from Maritime provinces. Oldham, M.J; ONHIC, 487 recs.
3	Parker, M. 2016. Wood turtle (<i>Glyptemys insculpta</i>) Visual Surveys at Black, Wallace, Musquodobit and Sackville Rivers, Nova Scotia. East Coast Aquatics Inc., 3 records.
3	Speers, L. 2001. Butterflies of Canada database. Agriculture & Agri-Food Canada, Biological Resources Program, Ottawa, 190 recs.
3	Thompson, R. 2018. Williamsdale Quarry Expansion Project, NS, Environmental Assessments rare plants. Dexter Construction Company Limited.
3	Zahavich, J. 2018. Canada Warbler and Olive-sided Flycatcher records 2018. Island Nature Trust, 14 recs.
3	Zahavich, J.L. 2020. Canada Warbler, Olive-sided Flycatcher and Eastern Wood-Pewee observations, Prince Edward Island, 2017-2019. Island Nature Trust.
2	Amirault, D.L. 1997-2000. Unpublished files. Canadian Wildlife Service, Sackville, 470 recs.
2	Amirault, D.L. 2003. 2003 Peregrine Falcon Survey. Canadian Wildlife Service, Sackville, unpublished data. 7 recs.
2	Amiro, Peter G. 1998. Atlantic Salmon: Inner Bay of Fundy SFA 22 & part of SFA 23. Dept of Fisheries & Oceans, Atlantic Region, Science Stock Status Report D3-12. 4 recs.
2	Basquill, S.P. 2009. 2009 field observations. Nova Scotia Dept of Natural Resources.
2	Basquill, S.P., Porter, C. 2019. Bryophyte and lichen specimens submitted to the E.C. Smith Herbarium. NS Department of Lands and Forestry.
2	Benedict, B. Connell Herbarium Specimen Database Download 2004. Connell Memorial Herbarium, University of New Brunswick. 2004.
2	Boyne, A.W. & Grecian, V.D. 1999. Tern Surveys. Canadian Wildlife Service, Sackville, unpublished data. 23 recs.
2	Bredin, K.A. 2001. WTF Project: Freshwater Mussel Fieldwork in Freshwater Species data. Atlantic Canada Conservation Data Centre, 101 recs.
2	Cameron, B. 2005. <i>C. palmicola</i> , <i>E. pedicellatum</i> records from Sixth Lake. Pers. comm. to C.S. Blaney. 3 recs, 3 recs.
2	Cameron, R.P. 2009. Nova Scotia nonvascular plant observations, 1995-2007. Nova Scotia Dept Natural Resources, 27 recs.
2	Christie, D.S. 2000. Christmas Bird Count Data, 1997-2000. Nature NB, 54 recs.
2	de Graaf, M.; Miller, D. 2020. Records of <i>Cyrtopodium reginae</i> and <i>Equisetum variegatum</i> from CFI property at Scoudouc Road and <i>Symplocarpus foetidus</i> from CFI properties at Upper Cape, Westmorland County, NB. pers. comm. (ed.) Community Forests International, 4 records.
2	Dibblee, R.L. 1999. PEI Cormorant Survey. Prince Edward Island Fisheries, Aquaculture & Environment, 1p. 21 recs.
2	Golder Associates. 2018. Dorchester wind turbine bat detections. Owens, Luke, Firman, Mitch, Melcher, Heather (ed.) Golder Associates Ltd.
2	Harris, P. 2004. Plant records from 1997-2003. Island Nature Trust, Charlottetown PE, 71 recs.
2	Hicklin, P.W. 1995. The Maritime Shorebird Survey Newsletter. Calidris, No. 3. 6 recs.
2	Honeyman, K. 2019. Unique Areas Database, 2018. J.D. Irving Ltd.
2	Kelly, G. 2005. <i>Fraxinus nigra</i> . Dept of Agriculture, Fisheries, Aquaculture & Forestry. Pers. comm. to C.S. Blaney, Mar. 2, 11 recs.
2	Klymko, J.J.D. 2010. Miscellaneous observations reported to ACCDC (zoology). Pers. comm. from various persons, 3 recs.
2	LaPaix, R.; Parker, M. 2013. email to Sean Blaney regarding <i>Listera australis</i> observations near Kearney Lake. East Coast Aquatics, 2.
2	Layberry, R.A. 2012. Lepidopteran records for the Maritimes, 1974-2008. Layberry Collection, 1060 recs.
2	Macaulay, M. Notes on newly discovered <i>Hepatica nobilis</i> var. <i>obtusata</i> population in Cumberland Co. NS. Pers. comm. to S. Blaney, 1 rec.
2	Mazerolle, D.M. 2005. Bouctouche Irving Eco-Centre rare coastal plant fieldwork results 2004-05. Irving Eco-centre, la Dune du Bouctouche, 174 recs.
2	Mazerolle, David. 2021. Botanical fieldwork 2019-20200. Parks Canada.
2	McNeil, J.A. 2019. Snapping Turtle records, 2019. Mersey Tobeatic Research Institute.
2	Munro, M. 2003. <i>Caulophyllum thalictroides</i> & <i>Carex hirtifolia</i> at Herbert River, Brooklyn, NS. , Pers. comm. to C.S. Blaney. 2 recs.
2	Munro, M. 2003. <i>Dicra palustris</i> & <i>Hepatica nobilis</i> var. <i>obtusata</i> at Cogmagun River, NS. , Pers. comm. to C.S. Blaney . 2 recs.
2	Neily, T.H.; Smith, C.; Whitman, E. 2011. NCC Logging Lake (Halifax Co. NS) properties baseline survey data. Nature Conservancy of Canada, 2 recs.
2	Neily, Tom. 2020. Lichen surveys for PEI Forested Landscapes Priority Place. Chapman, C.J. (ed.) Atlantic Canada Conservation Data Centre, 158 records.
2	Newell, R. E., MacKinnon, C. M. & Kennedy, A. C. 2006. Botanical Survey of Boot Island National Wildlife Area, Nova Scotia, 2004. Canadian Wildlife Service, Atlantic Region, Technical Report Series Number 450. 3 recs.
2	Newell, R.E. 2006. Rare plant observations in Digby Neck. Pers. comm. to S. Blaney, 6 recs.
2	Robinson, S.L. 2010. Fieldwork 2009 (dune ecology). Atlantic Canada Conservation Data Centre. Sackville NB, 408 recs.
2	Robinson, S.L. 2011. 2011 ND dune survey field data. Atlantic Canada Conservation Data Centre, 2715 recs.
2	Shafer, A.B.A., D.T. Stewart. 2006. A Disjunct Population of <i>Sorex dispar</i> (Long-Tailed Shrew) in Nova Scotia. Northeastern Naturalist, 13(4): 603-608.
2	Shortt, R. UNB specimen data for various tracked species formerly considered secure. Connell Memorial Herbarium, UNB, Fredericton NB. 2019.
2	Sollows, M.C. 2008. NBM Science Collections databases: herpetiles. New Brunswick Museum, Saint John NB, download Jan. 2008, 8636 recs.
2	White, S. 2018. Notable species sightings, 2016-2017. East Coast Aquatics.
1	Amirault, D.L. 2000. Piping Plover Surveys, 1983-2000. Canadian Wildlife Service, Sackville, unpublished data. 70 recs.
1	Amirault, D.L. 2005. 2005 Peregrine Falcon Survey. Canadian Wildlife Service, Sackville, unpublished data. 27 recs.
1	Anon. Dataset of butterfly records for the Maritime provinces. Museum of Comparative Zoology, Harvard University. 2017.
1	Barney, T. 2020. Text message to Sean Blaney from Ted Barney with photograph of large Snapping Turtle at White Birch Impoundment, Westmorland Co., NB. pers. comm., 1 record.
1	Basquill, S. P. 2008. Nova Scotia Dept of Natural Resources.
1	Basquill, S.P. 2004. <i>C. americana</i> and <i>Sedum</i> sp records, 2002. Pers. comm. to C.S. Blaney. 2 recs, 2 recs.
1	Basquill, S.P. 2012. 2012 Bryophyte specimen data. Nova Scotia Department of Natural Resources, 37 recs.
1	Belliveau, A.G. E.C. Smith Herbarium Specimen Database 2019. E.C. Smith Herbarium, Acadia University. 2019.
1	Benedict, B. Connell Herbarium Specimens, Digital photos. University New Brunswick, Fredericton. 2005.
1	Benjamin, L.K. 2003. <i>Cyrtopodium arietinum</i> in Cogmagun River NS. Pers. comm. to S. Blaney, 1 rec.
1	Blaney, C.S. 2014. 2014 Bank Swallow colony observation, Westcock, NB. Atlantic Canada Conservation Data Centre.
1	Bonnyman, Vanessa. 2021. Eastern Wood-Pewee Observation on Bonshaw Trail, PEI.

# recs	CITATION
1	Bruce, J. 2014. 2014 Wood Turtle email report, Nine Mile River, NS. NS Department of Natural Resources.
1	Clayden, S.R. 2006. Pseudevernia cladonia records. NB Museum. Pers. comm. to S. Blaney, Dec, 4 recs.
1	Clayden, S.R. 2020. Email to Sean Blaney regarding Pilophorus cereus and P. fibula at Fidele Lake area, Charlotte County, NB. pers. comm., 2 records.
1	COSEWIC (Committee on the Status of Wildlife in Canada). 2013. COSEWIC Assessment and Status Report on the Eastern Waterflea Peltigera hydrothyria in Canada. COSEWIC, 46 pp.
1	Crowell, A. 2004. Cyripedium arietinum in Weir Brook, Hants Co. Pers. comm. to S. Blaney, 1 rec.
1	Curley, F.R. 2021. Nymphalis l-album record from near Belfast PEI. Pers. comm. to J. Klymko.
1	deGooyer, K. 2019. Snapping Turtle and Eastern White Cedar observations. Nova Scotia Environment.
1	Doucet, D.A. ACCDC Reference Collection. Atlantic Canada Conservation Data Centre, Sackville NB. 2008.
1	Eastman, A. 2019. Snapping Turtle observation at Brookfield, Colchester Co. NS. Halifax Field Naturalists Nova Scotia Nature Archive Facebook Page, 1 record.
1	Edge, Thomas A. 1984. Status report on the Atlantic Whitefish (Coregonus huntsmani). Committee on the Status of Endangered Wildlife in Canada.
1	Elizabeth Spence. 2020. Email from Elizabeth Spence to John Klymko about the occurrence of a Wood Turtle in Westmorland County, New Brunswick. Pers. comm.
1	Epworth, W. 2012. Species at Risk records, 2009-11. Fort Folly Habitat Recovery Program, 162 recs.
1	Gerriets, S.H. 1997-2001. Element Occurrence Database. Atlantic Canada Conservation Data Centre, Sackville NB, 1 rec.
1	Golder Associates Ltd. 2021. Black Ash location from Goff's Quarry Expansion Environment Assessment, 2017. Golder Associates Ltd., 1 record.
1	Goltz, J.P. 2001. Botany Ramblings April 29-June 30, 2001. N.B. Naturalist, 28 (2): 51-2. 8 recs.
1	Harris, Megan. 2018. Miscellaneous Sorex palustris record. Pers. comm. to S. Blaney.
1	Haughian, S.R. 2018. Description of Fuscopannaria leucosticta field work in 2017. New Brunswick Museum, 314 recs.
1	Hill, N.M. 2021. Observation of Carex haydenii and black ash near Marshy Hope and Ponhook Lake. pers. comm.
1	iNaturalist.ca. 2022. iNaturalist records 2022. iNaturalist.ca (ed.) iNaturalist.org; iNaturalist.ca.
1	Jacques Whitford Ltd. 2003. Cananda Lily location. Pers. Comm. to S. Blaney. 2pp, 1 rec, 1 rec.
1	Jardine, Don. 2022. Email to AC CDC reporting an Evening Grosbeak Sighting in Winsloe South, PEI. pers. comm.
1	Kelly, Glen 2004. Botanical records from 2004 PEI Forestry fieldwork. Dept of Environment, Energy & Forestry, 71 recs.
1	Kennedy, Joseph. 2010. New Brunswick Peregrine records, 2009. New Brunswick Dept Natural Resources, 19 recs (14 active).
1	Kennedy, Joseph. 2010. New Brunswick Peregrine records, 2010. New Brunswick Dept Natural Resources, 16 recs (11 active).
1	Klymko, J. Henry Hensel's Butterfly Collection Database. Atlantic Canada Conservation Data Centre. 2016.
1	Klymko, J. Partial database of the Agriculture Canada Charlottetown Research Station Insect Collection butterfly specimens. Atlantic Canada Conservation Data Centre. 2016.
1	Klymko, J.J.D. 2012. Insect field work & submissions. Atlantic Canada Conservation Data Centre, 852 recs.
1	Lautenschlager, R.A. 2010. Miscellaneous observations reported to ACCDC (zoology). Pers. comm. from various persons, 2 recs.
1	Lautenschlager, R.A. 2020. Email to John Klymko about fisher sighting in Baie Verte. Klymko, J. (ed.) Lautenschlager, R.A., pers. comm.
1	MacAuley, M. 2008. Email to Sean Blaney regarding rich hardwood floodplain site at Howards Pool, Wallace River, NS.
1	MacAuley, M. 2020. Email to Sean Blaney regarding Agalinis pauperula var. parviflora at Malagash Station, NS. pers. comm., 2 records.
1	MacPhail, V. Bee and syrphid specimens from MSc research. Pers. comm., J. Klymko. 2006.
1	Majka, C.G. & McCorquodale, D.B. 2006. The Coccinellidae (Coleoptera) of the Maritime Provinces of Canada: new records, biogeographic notes, and conservation concerns. Zootaxa. Zootaxa, 1154: 49-68. 7 recs.
1	Mazerolle, D. 2003. Assessment of Seaside Pinweed (Lechea maritima var. subcylindrica) in Southeastern New Brunswick. Irving Eco-centre, la Dune du Bouctouche, 18 recs.
1	Miller, D.G. 2013. Peregrine Falcon nesting information from birdingnewbrunswick.ca. birdingnewbrunswick.ca.
1	Morrison, Annie. 2010. NCC Properties Fieldwork: June-August 2010. Nature Conservancy Canada, 508 recs.
1	Neily, P.D. Plant Specimens. Nova Scotia Dept Natural Resources, Truro. 2006.
1	Neily, T.H. & Pepper, C.; Toms, B. 2019. Boreal Felt Lichen Observation, April 2019. Mersey Tobeatic Research Institute.
1	Neily, T.H. 2004. Hepatica nobilis var. obtusa record for Falmouth NS. Pers. comm. to C.S. Blaney, 1 rec.
1	Neily, T.H. 2013. Email communication to Sean Blaney regarding Agalinis pauperula observations made in 2013 in Nova Scotia. , 1 rec.
1	Newell, R.E. 2004. Hepatica nobilis var. obtusa record. Pers. comm. to S. Blaney, 1 rec.
1	Niel, K. & Majka, C. 2008. New Records of Tiger Beetles (Coleoptera: Carabidae: Cicindelinae) in Nova Scotia. Journal of the Acadian Entomological Society, 4: 3-6.
1	Oehlke, W. 1999. Record of Polygonia satyrus from Prince Edward Island. http://www.silkmoths.bizland.com/ppsatyr.htm .
1	Parker, M. 2018. East Coast Aquatics ACCDC 2018 Report. East Coast Aquatics, 12 records.
1	Payzant, P. 2018. Satyr Comma record from Bible Hill, NS. https://novascotiabutterflies.ca .
1	Popma, K. 2001. Phalarope & other bird observations in Westmorland Co. , Pers. comm. to K.A. Bredin. 5 recs.
1	Quigley, E.J. 2021. Email to Sean Blaney regarding Eastern White Cedar (Thuja occidentalis) stand near Shinimicas Bridge. NSDLF, 1 record.
1	Robinson, C.B. 1907. Early intervale flora of eastern Nova Scotia. Transactions of the Nova Scotia Institute of Science, 10:502-506. 1 rec.
1	Sabine, M. 2016. Black Ash records from NB DNR permanent forest sampling Plots. New Brunswick Department of Natural Resources, 39 recs.
1	Sabine, M. 2016. NB DNR staff incidental Black Ash observations. New Brunswick Department of Natural Resources.
1	Scott, F.W. 1988. Status Report on the Southern Flying Squirrel (Glaucomys volans) in Canada. Committee on the Status of Endangered Wildlife in Canada, 2 recs.
1	Shortt, R. Connell Herbarium Black Ash specimens. University New Brunswick, Fredericton. 2019.
1	Skevington, Jeffrey H. 2020. Syrphid records used for the Field Guide to the Flower Flies of Northeastern North America. Canadian National Collection of Insects.
1	Spicer, C.D. 2004. Specimens from CWS Herbarium, Mount Allison Herbarium Database. Mount Allison University, 5939 recs.
1	te Raa, J. 2016. Island Naturalist. Nature PEI, 219.
1	Thomas, A.W. 1996. A preliminary atlas of the butterflies of New Brunswick. New Brunswick Museum.
1	Thomas, H.H., Jones, G.S. & Diblee, R.L. 1980. Sorex palustris on Prince Edward Island. Can. Field Nat., vol 94:329-331. 2 recs.
1	Toms, Brad. 2022. Non-Lichen Observations from Lichen SMP and NCC Property Searches. Mersey Tobeatic Research Institute.
1	Williams, M. Cape Breton University Digital Herbarium. Cape Breton University Digital Herbarium. 2013.

# recs	CITATION
1	Wilson, G. 2013. 2013 Snapping Turtle email report, Wentworth, NS. Pers. comm.
1	Zahavich, J. 2017. Canada Warbler and Olive-sided Flycatcher records 2017. Island Nature Trust, 14 recs.