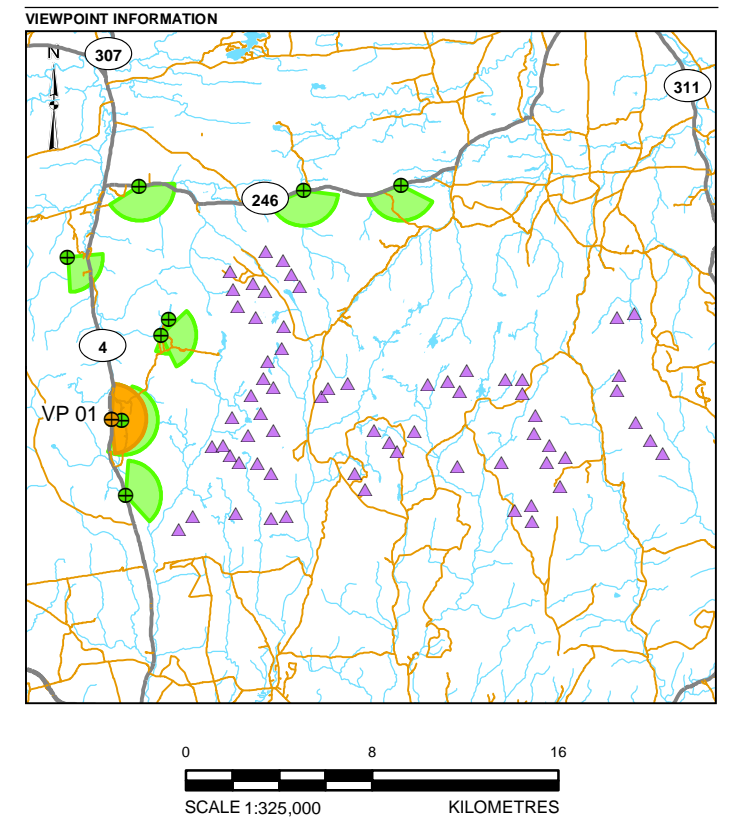


PATH: I:\CLIENTS\SRES Canada\CA0020489_7754\Mappping\Visual\Rev1\CA0020489_7754_Fig1-1_Folly-Lake-Highway-4-50mm_blue-sky_Rev1.mxd PRINTED ON: 2024-03-19 AT: 12:01:02 PM

VIEWPOINT SIMULATION



BASELINE PHOTO



- LEGEND**
- ▲ TURBINE LOCATION
 - CURRENT VIEWPOINT
 - VIEWPOINT
 - CURRENT VIEWPOINT FIELD OF VIEW
 - OTHER VIEWPOINT FIELD OF VIEW
 - HIGHWAY
 - LOCAL ROAD
 - WATERCOURSE
 - WATERBODY

NOTE
SOME TURBINES MIGHT BE (PARTIALLY) OBTAINED BY VEGETATION IN CLOSE PROXIMITY TO THE VIEWPOINT.

VIEWPOINT INFORMATION

VIEWPOINT NUMBER:	VP-01
EASTING:	457082 m
NORTHING:	5043280 m
ELEVATION:	191 m
DATE:	18 DECEMBER 2023
WEATHER CONDITIONS:	OVERCAST (BLUE SKY DEPICTED)
DIRECTION:	EAST
FOCAL LENGTH:	50 mm
FIELD OF VIEW:	-170°
HEIGHT OF CAMERA ABOVE GROUND:	1.7 m

REFERENCES
DIGITAL BASE DATA OBTAINED FROM GEOGRATIS, © DEPARTMENT OF NATURAL RESOURCES CANADA. ALL RIGHTS RESERVED
DATUM: NAD83 PROJECTION: UTM ZONE 20

CLIENT
EVERWIND FUELS (EWF)

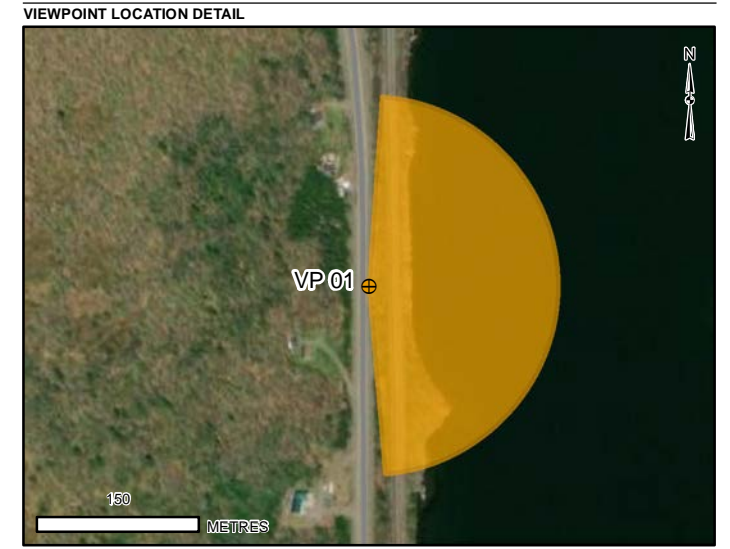
PROJECT
WINDY RIDGE & KMTNUK WIND PROJECTS

TITLE
VISUAL SIMULATION VIEWPOINT 01 - FOLLY LAKE HIGHWAY 4 - 50MM

CONSULTANT

	YYYY-MM-DD	2024-03-19
DESIGNED	PT	
PREPARED	BS	
REVIEWED	LB	
APPROVED	TC	

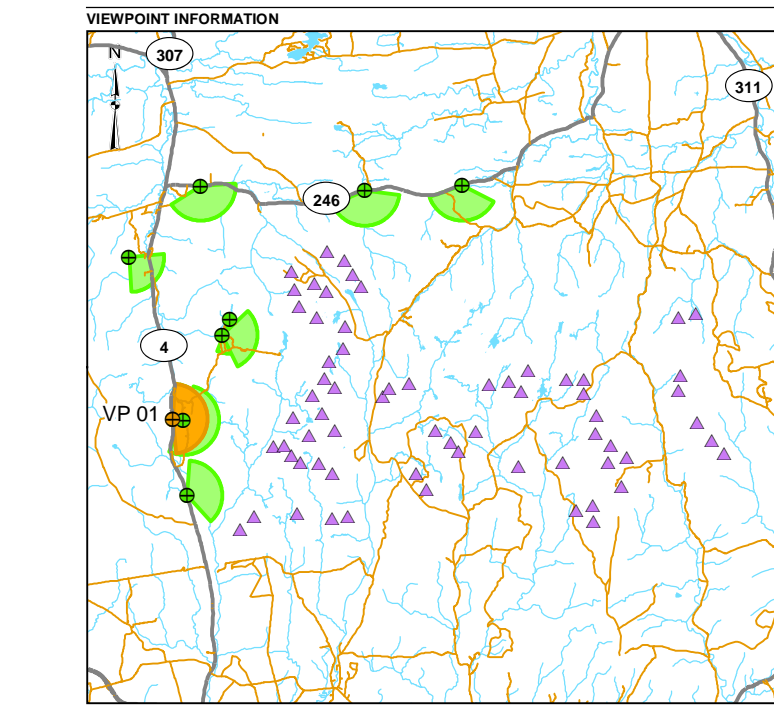
PROJECT NO. CA0020489.7754 **CONTROL** 1002 **REV.** 1 **FIGURE** 1-1



VIEWPOINT SIMULATION



BASELINE PHOTO



SCALE 1:325,000
KILOMETRES

- LEGEND**
- TURBINE LOCATION
 - CURRENT VIEWPOINT
 - VIEWPOINT
 - CURRENT VIEWPOINT FIELD OF VIEW
 - OTHER VIEWPOINT FIELD OF VIEW
 - HIGHWAY
 - LOCAL ROAD
 - WATERCOURSE
 - WATERBODY

NOTE
SOME TURBINES MIGHT BE (PARTIALLY) OBTURED BY VEGETATION IN CLOSE PROXIMITY TO THE VIEWPOINT.

VIEWPOINT INFORMATION

VIEWPOINT NUMBER:	VP-01
EASTING:	457082 m
NORTHING:	5043280 m
ELEVATION:	191 m
DATE:	18 DECEMBER 2023
WEATHER CONDITIONS:	OVERCAST (BLUE SKY DEPICTED)
DIRECTION:	EAST
FOCAL LENGTH:	80 mm
FIELD OF VIEW:	-170°
HEIGHT OF CAMERA ABOVE GROUND:	1.7 m

REFERENCES
DIGITAL BASE DATA OBTAINED FROM GEOGRATIS, © DEPARTMENT OF NATURAL RESOURCES CANADA. ALL RIGHTS RESERVED.
DATUM: NAD83 PROJECTION: UTM ZONE 20

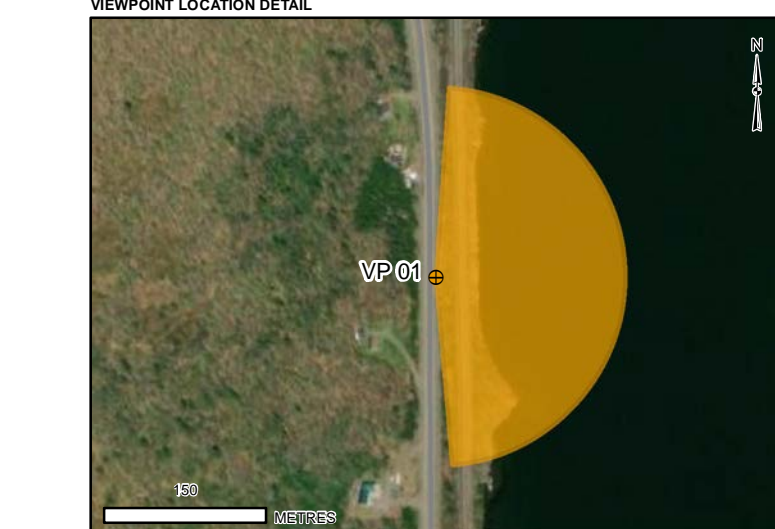
CLIENT
EVERWIND FUELS (EWF)

PROJECT
WINDY RIDGE & KMTNUK WIND PROJECTS

TITLE
VISUAL SIMULATION VIEWPOINT 01 - FOLLY LAKE HIGHWAY 4 - 30MM

CONSULTANT	WSP
DESIGNED	PT
PREPARED	BS
REVIEWED	LB
APPROVED	TC

PROJECT NO.	CONTROL	REV.	FIGURE
CA0020489.7754	1002	1	1-2

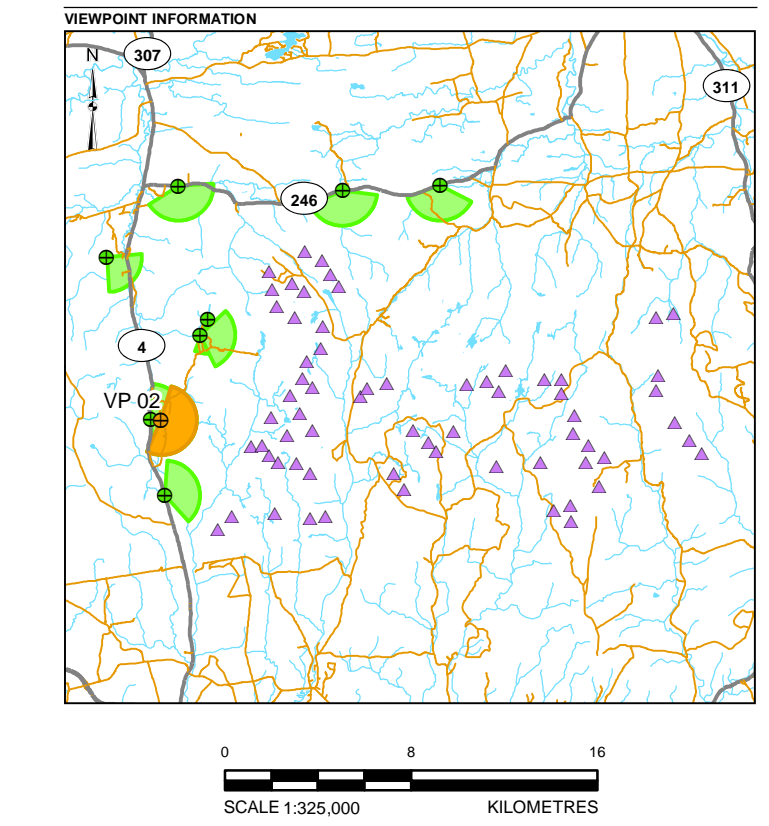


PATH: I:\CLIENTS\SRES Canada\CA0020489_7754\Mappping\Visual\Rev1\CA0020489_7754_Fig2_FollyLake-Dock-50mm_blue-sky_Rev1.mxd PRINTED ON: 2024-03-19 AT: 12:04:03 PM

VIEWPOINT SIMULATION



BASELINE PHOTO



- LEGEND**
- ▲ TURBINE LOCATION
 - CURRENT VIEWPOINT
 - VIEWPOINT
 - CURRENT VIEWPOINT FIELD OF VIEW
 - OTHER VIEWPOINT FIELD OF VIEW
 - HIGHWAY
 - LOCAL ROAD
 - WATERCOURSE
 - WATERBODY

NOTE
SOME TURBINES MIGHT BE (PARTIALLY) OBTAINED BY VEGETATION IN CLOSE PROXIMITY TO THE VIEWPOINT.

VIEWPOINT INFORMATION

VIEWPOINT NUMBER:	VP-02
EASTING:	457567 m
NORTHING:	5043227 m
ELEVATION:	183 m
DATE:	15 DECEMBER 2023
WEATHER CONDITIONS:	OVERCAST (BLUE SKY DEPICTED)
DIRECTION:	EAST
FOCAL LENGTH:	50 mm
FIELD OF VIEW:	~180°
HEIGHT OF CAMERA ABOVE GROUND:	1.7 m

REFERENCES
DIGITAL BASE DATA OBTAINED FROM GEOGRATIS, © DEPARTMENT OF NATURAL RESOURCES CANADA. ALL RIGHTS RESERVED
DATUM: NAD83 PROJECTION: UTM ZONE 20

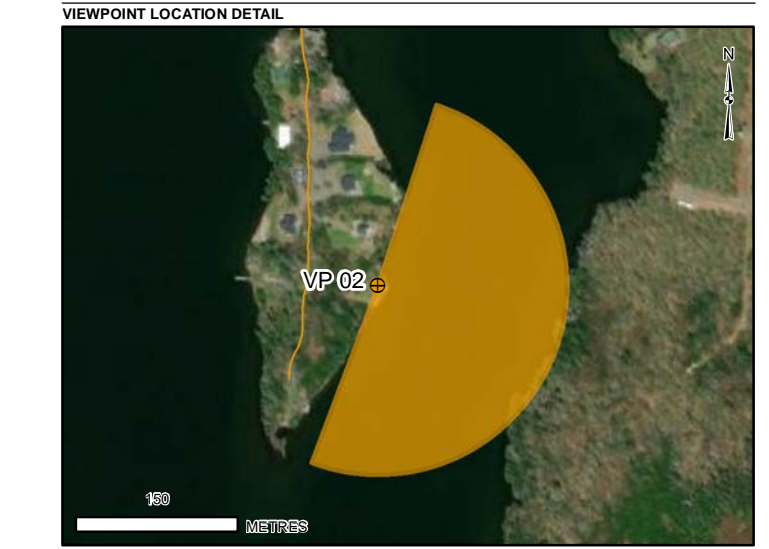
CLIENT
EVERWIND FUELS (EFW)

PROJECT
WINDY RIDGE & KMTNUK WIND PROJECTS

TITLE
VISUAL SIMULATION VIEWPOINT 02 - FOLLY LAKE DOCK - 50MM

CONSULTANT	WSP	YYYY-MM-DD	2024-03-19
DESIGNED	PT		
PREPARED	BS		
REVIEWED	LB		
APPROVED	TC		

PROJECT NO. CA0020489.7754 CONTROL 1002 REV. 1 FIGURE 2



PATH: I:\CLIENTS\RES Canada\CA0020489_7754\Mappping\Visual\Rev1\CA0020489_7754_Fig3_FollyMountain-50mm_blue-sky_Rev1.mxd PRINTED ON: 2024-03-19 AT: 12:04:38 PM

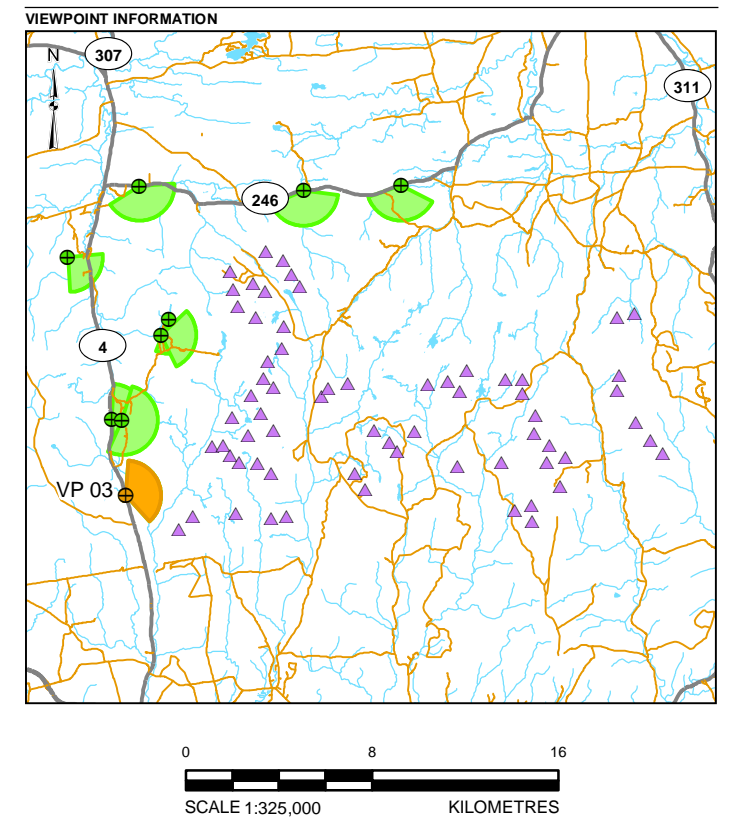
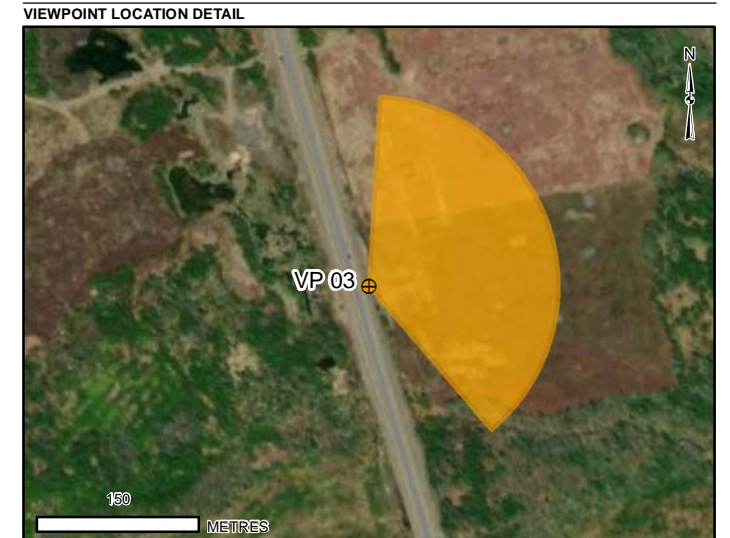
VIEWPOINT SIMULATION



BASELINE PHOTO



NOTE
SOME TURBINES MIGHT BE (PARTIALLY) OBSCURED BY VEGETATION IN CLOSE PROXIMITY TO THE VIEWPOINT.



LEGEND

	TURBINE LOCATION		HIGHWAY
	CURRENT VIEWPOINT		LOCAL ROAD
	VIEWPOINT		WATERCOURSE
	CURRENT VIEWPOINT FIELD OF VIEW		WATERBODY
	OTHER VIEWPOINT FIELD OF VIEW		

VIEWPOINT INFORMATION

VIEWPOINT NUMBER:	VP-03
EASTING:	457703 m
NORTHING:	5039996 m
ELEVATION:	229 m
DATE:	18 DECEMBER 2023
WEATHER CONDITIONS:	OVERCAST (BLUE SKY DEPICTED)
DIRECTION:	EAST
FOCAL LENGTH:	50 mm
FIELD OF VIEW:	-135°
HEIGHT OF CAMERA ABOVE GROUND:	1.7 m

REFERENCES
DIGITAL BASE DATA OBTAINED FROM GEOGRATIS, © DEPARTMENT OF NATURAL RESOURCES CANADA. ALL RIGHTS RESERVED
DATUM: NAD83 PROJECTION: UTM ZONE 20

CLIENT
EVERWIND FUELS (EWF)

PROJECT
WINDY RIDGE & KMTNUK WIND PROJECTS

TITLE
VISUAL SIMULATION VIEWPOINT 03 - FOLLY MOUNTAIN - 50MM

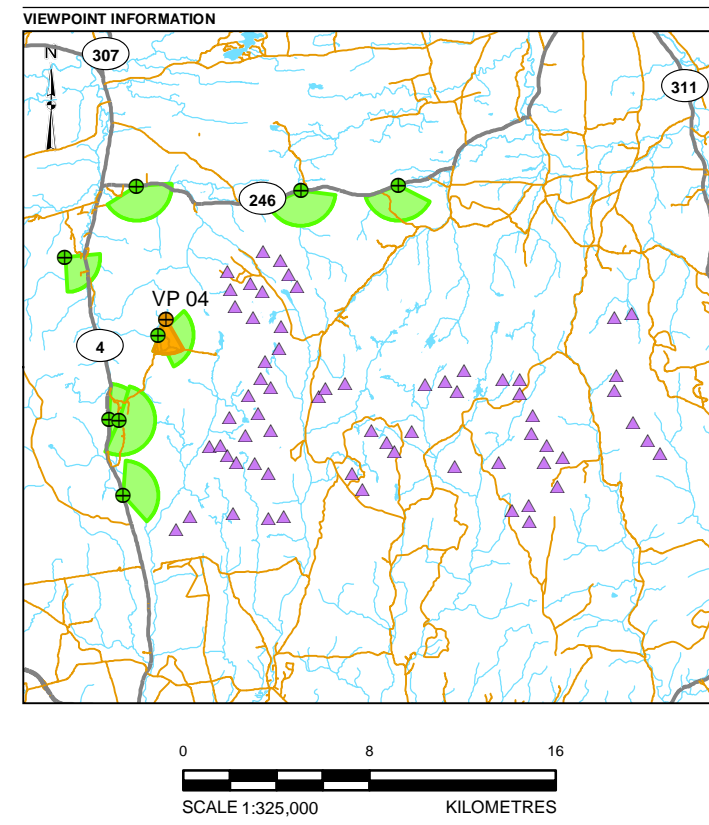
CONSULTANT	WSP	YYYY-MM-DD	2024-03-19
DESIGNED	PT		
PREPARED	BS		
REVIEWED	LB		
APPROVED	TC		

PROJECT NO. CA0020489.7754 CONTROL 1002 REV. 1 FIGURE 3

VIEWPOINT SIMULATION



BASELINE PHOTO



LEGEND

	TURBINE LOCATION		HIGHWAY
	CURRENT VIEWPOINT		LOCAL ROAD
	VIEWPOINT		WATERCOURSE
	CURRENT VIEWPOINT FIELD OF VIEW		WATERBODY
	OTHER VIEWPOINT FIELD OF VIEW		

NOTE
SOME TURBINES MIGHT BE (PARTIALLY) OBSCURED BY VEGETATION IN CLOSE PROXIMITY TO THE VIEWPOINT.

VIEWPOINT INFORMATION

VIEWPOINT NUMBER:	VP-04
EASTING:	459540 m
NORTHING:	5047585 m
ELEVATION:	272 m
DATE:	15 DECEMBER 2023
WEATHER CONDITIONS:	OVERCAST (BLUE SKY DEPICTED)
DIRECTION:	SOUTH
FOCAL LENGTH:	50 mm
FIELD OF VIEW:	-50°
HEIGHT OF CAMERA ABOVE GROUND:	1.7 m

REFERENCES
DIGITAL BASE DATA OBTAINED FROM GEOGRATIS, © DEPARTMENT OF NATURAL RESOURCES CANADA. ALL RIGHTS RESERVED
DATUM: NAD83 PROJECTION: UTM ZONE 20

CLIENT
EVERWIND FUELS (EWF)

PROJECT
WINDY RIDGE & KMTNUK WIND PROJECTS

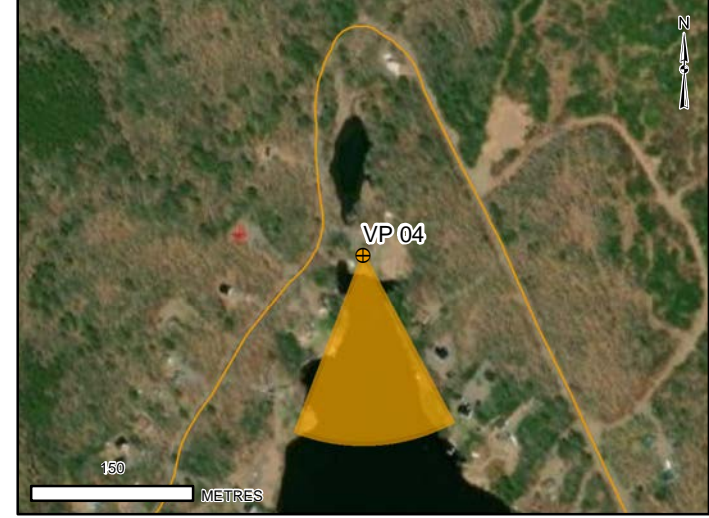
TITLE
VISUAL SIMULATION VIEWPOINT 04 - HART LAKE NORTHEAST
- 50MM

CONSULTANT

YYYY-MM-DD	2024-03-19
DESIGNED	PT
PREPARED	BS
REVIEWED	LB
APPROVED	TC

PROJECT NO.	CONTROL	REV.	FIGURE
CA0020489.7754	1002	1	4

VIEWPOINT LOCATION DETAIL



PATH: I:\CLIENTS\RES_Canada\CA0020489_7754\Mapping\Visual\Rev1\CA0020489_7754_Fig5_HartLake-W-50mm_blue-sky_Rev1.mxd PRINTED ON: 2024-03-19 AT: 12:06:09 PM

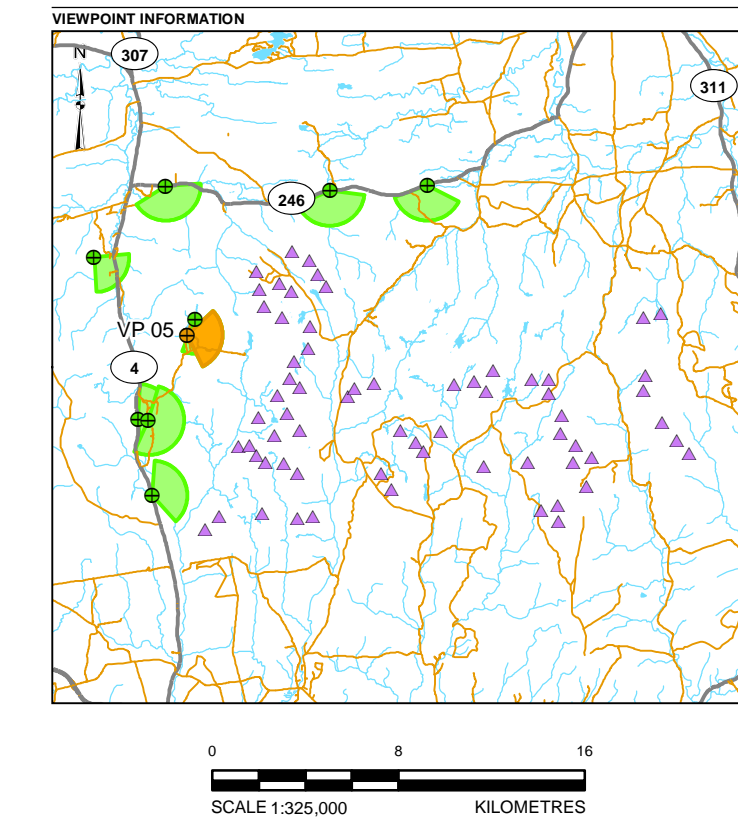
VIEWPOINT SIMULATION



BASELINE PHOTO



NOTE
SOME TURBINES MIGHT BE (PARTIALLY) OBSCURED BY VEGETATION IN CLOSE PROXIMITY TO THE VIEWPOINT.



LEGEND

	TURBINE LOCATION		HIGHWAY
	CURRENT VIEWPOINT		LOCAL ROAD
	VIEWPOINT		WATERCOURSE
	CURRENT VIEWPOINT FIELD OF VIEW		WATERBODY
	OTHER VIEWPOINT FIELD OF VIEW		

VIEWPOINT INFORMATION

VIEWPOINT NUMBER:	VP-05
EASTING:	459213 m
NORTHING:	5046889 m
ELEVATION:	273 m
DATE:	15 DECEMBER 2023
WEATHER CONDITIONS:	OVERCAST (BLUE SKY DEPICTED)
DIRECTION:	EAST
FOCAL LENGTH:	50 mm
FIELD OF VIEW:	-110°
HEIGHT OF CAMERA ABOVE GROUND:	1.7 m

REFERENCES
DIGITAL BASE DATA OBTAINED FROM GEOGRATIS, © DEPARTMENT OF NATURAL RESOURCES CANADA. ALL RIGHTS RESERVED
DATUM: NAD83 PROJECTION: UTM ZONE 20

CLIENT
EVERWIND FUELS (EFW)

PROJECT
WINDY RIDGE & KMTNUK WIND PROJECTS

TITLE
VISUAL SIMULATION VIEWPOINT 05 - HART LAKE WEST - 50MM

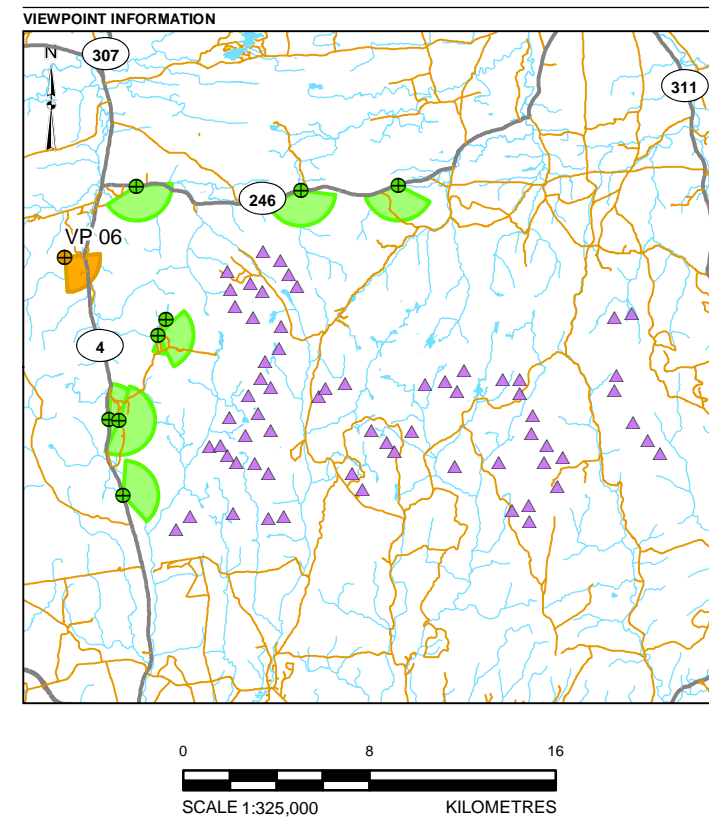
CONSULTANT	YYYY-MM-DD	2024-03-19
	DESIGNED	PT
	PREPARED	BS
	REVIEWED	LB
	APPROVED	TC



VIEWPOINT SIMULATION



BASELINE PHOTO



- LEGEND**
- ▲ TURBINE LOCATION
 - CURRENT VIEWPOINT
 - VIEWPOINT
 - CURRENT VIEWPOINT FIELD OF VIEW
 - OTHER VIEWPOINT FIELD OF VIEW
 - HIGHWAY
 - LOCAL ROAD
 - WATERCOURSE
 - WATERBODY

NOTE
SOME TURBINES MIGHT BE (PARTIALLY) OBSCURED BY VEGETATION IN CLOSE PROXIMITY TO THE VIEWPOINT.

VIEWPOINT INFORMATION

VIEWPOINT NUMBER:	VP-06
EASTING:	455196 m
NORTHING:	5050240 m
ELEVATION:	232 m
DATE:	15 DECEMBER 2023
WEATHER CONDITIONS:	CLOUDY (BLUE SKY DEPICTED)
DIRECTION:	SOUTHEAST
FOCAL LENGTH:	50 mm
FIELD OF VIEW:	-90°
HEIGHT OF CAMERA ABOVE GROUND:	1.7 m

REFERENCES
DIGITAL BASE DATA OBTAINED FROM GEOGRATIS, © DEPARTMENT OF NATURAL RESOURCES CANADA. ALL RIGHTS RESERVED
DATUM: NAD83 PROJECTION: UTM ZONE 20

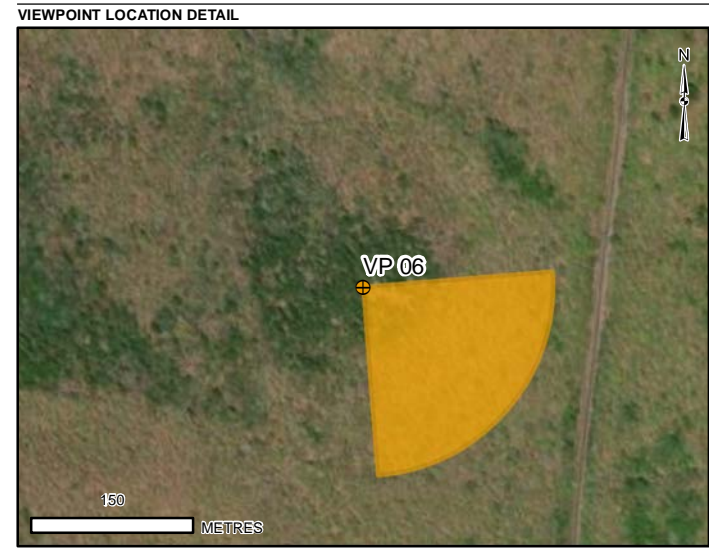
CLIENT
EVERWIND FUELS (EFW)

PROJECT
WINDY RIDGE & KMTNUK WIND PROJECTS

TITLE
VISUAL SIMULATION VIEWPOINT 06 - HOSTEL LOOKOFF - 50MM

CONSULTANT	YYYY-MM-DD	2024-03-19
	DESIGNED	PT
	PREPARED	BS
	REVIEWED	LB
	APPROVED	TC

PROJECT NO.	CONTROL	REV.	FIGURE
CA0020489.7754	1002	1	6-1

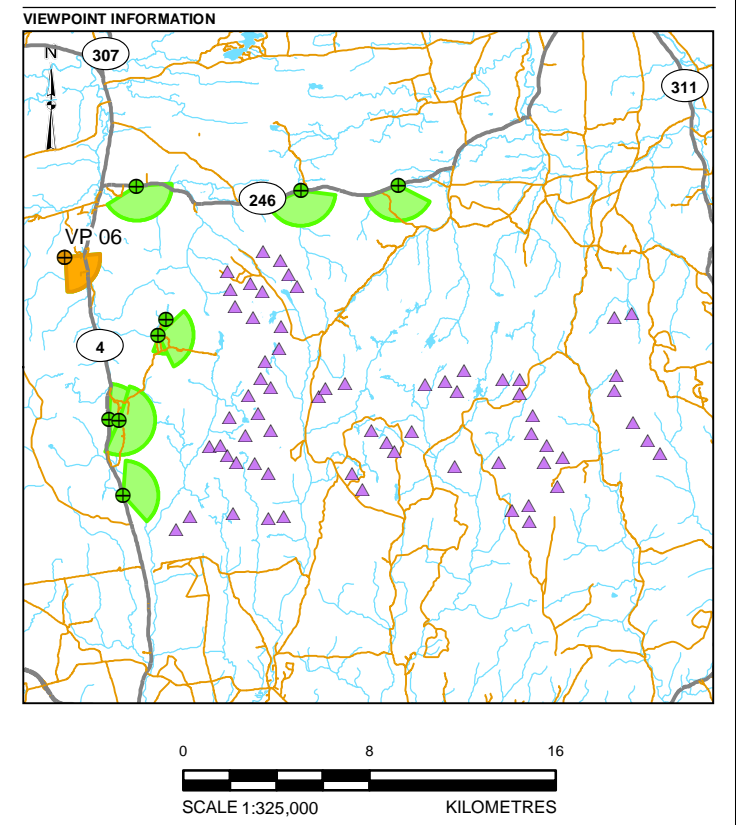


PATH: I:\CLIENTS\RES_Canada\CA0020489_7754\Mapping\Visual\Rev1\CA0020489_7754_Fig6-2_HostelLookoff-80mm_blue-sky_Rev1.mxd PRINTED ON: 2024-03-19 AT: 12:07:42 PM

VIEWPOINT SIMULATION



BASELINE PHOTO



LEGEND

TURBINE LOCATION	HIGHWAY
CURRENT VIEWPOINT	LOCAL ROAD
VIEWPOINT	WATERCOURSE
CURRENT VIEWPOINT FIELD OF VIEW	WATERBODY
OTHER VIEWPOINT FIELD OF VIEW	

NOTE
SOME TURBINES MIGHT BE (PARTIALLY) OBSCURED BY VEGETATION IN CLOSE PROXIMITY TO THE VIEWPOINT.

VIEWPOINT INFORMATION

VIEWPOINT NUMBER:	VP-06
EASTING:	455196 m
NORTHING:	5050240 m
ELEVATION:	232 m
DATE:	15 DECEMBER 2023
WEATHER CONDITIONS:	CLOUDY (BLUE SKY DEPICTED)
DIRECTION:	SOUTHEAST
FOCAL LENGTH:	80 mm
FIELD OF VIEW:	-90°
HEIGHT OF CAMERA ABOVE GROUND:	1.7 m

REFERENCES
DIGITAL BASE DATA OBTAINED FROM GEOGRATIS, © DEPARTMENT OF NATURAL RESOURCES CANADA. ALL RIGHTS RESERVED
DATUM: NAD83 PROJECTION: UTM ZONE 20

CLIENT
EVERWIND FUELS (EWF)

PROJECT
WINDY RIDGE & KMTNUK WIND PROJECTS

TITLE
VISUAL SIMULATION VIEWPOINT 06 - HOSTEL LOOKOFF - 80MM

CONSULTANT	YYYY-MM-DD	2024-03-19
	DESIGNED	PT
	PREPARED	BS
	REVIEWED	LB
	APPROVED	TC

PROJECT NO.	CONTROL	REV.	FIGURE
CA0020489.7754	1002	1	6-2

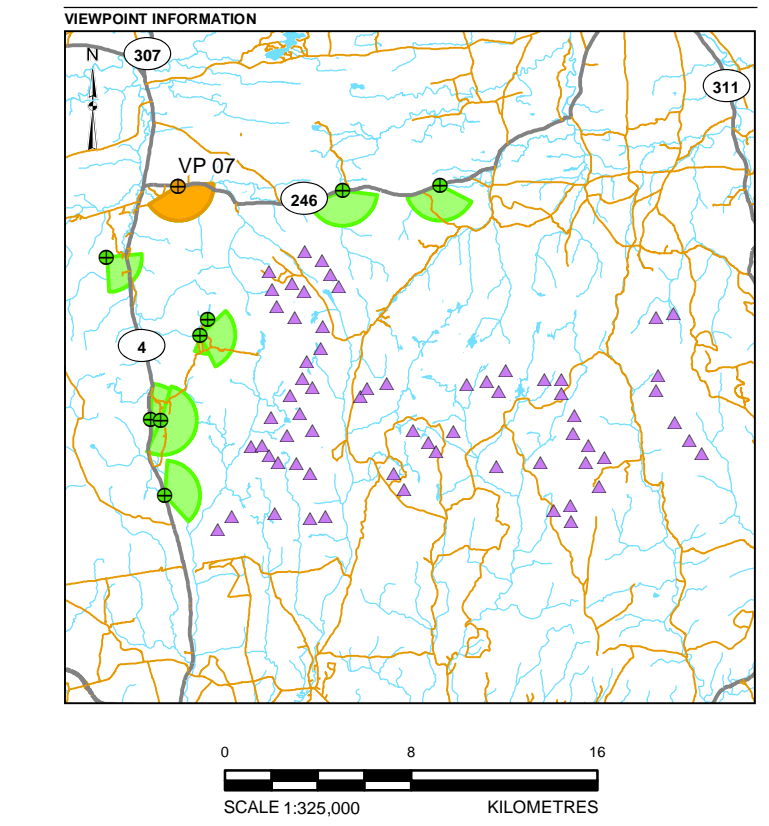


PATH: I:\CLIENTS\SRES Canada\CA0020489_7754\Mappping\Visual\Rev1\CA0020489_7754_Fig7-1_Highway-246-1-50mm_blue-sky_Rev1.mxd PRINTED ON: 2024-03-19 AT: 1:18:34 PM

VIEWPOINT SIMULATION



BASELINE PHOTO



- LEGEND**
- ▲ TURBINE LOCATION
 - CURRENT VIEWPOINT
 - VIEWPOINT
 - CURRENT VIEWPOINT FIELD OF VIEW
 - OTHER VIEWPOINT FIELD OF VIEW
 - HIGHWAY
 - LOCAL ROAD
 - WATERCOURSE
 - WATERBODY

NOTE
SOME TURBINES MIGHT BE (PARTIALLY) OBSCURED BY VEGETATION IN CLOSE PROXIMITY TO THE VIEWPOINT.

VIEWPOINT INFORMATION

VIEWPOINT NUMBER:	VP-07
EASTING:	458273 m
NORTHING:	5053303 m
ELEVATION:	69 m
DATE:	15 DECEMBER 2023
WEATHER CONDITIONS:	OVERCAST (BLUE SKY DEPICTED)
DIRECTION:	SOUTH
FOCAL LENGTH:	50 mm
FIELD OF VIEW:	~150°
HEIGHT OF CAMERA ABOVE GROUND:	1.7 m

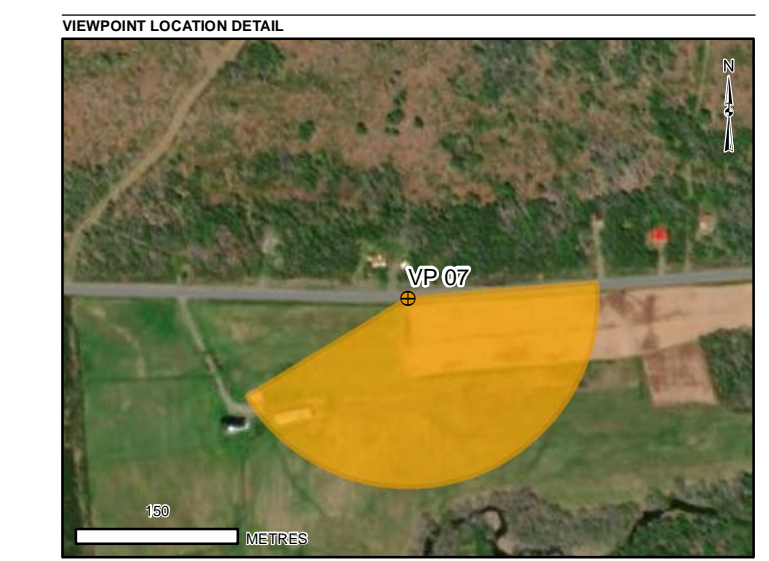
REFERENCES
DIGITAL BASE DATA OBTAINED FROM GEOGRATIS, © DEPARTMENT OF NATURAL RESOURCES CANADA. ALL RIGHTS RESERVED
DATUM: NAD83 PROJECTION: UTM ZONE 20

CLIENT
EVERWIND FUELS (EWF)

PROJECT
WINDY RIDGE & KMTNUK WIND PROJECTS

TITLE
VISUAL SIMULATION VIEWPOINT 07 - HIGHWAY 246-1 - 50MM

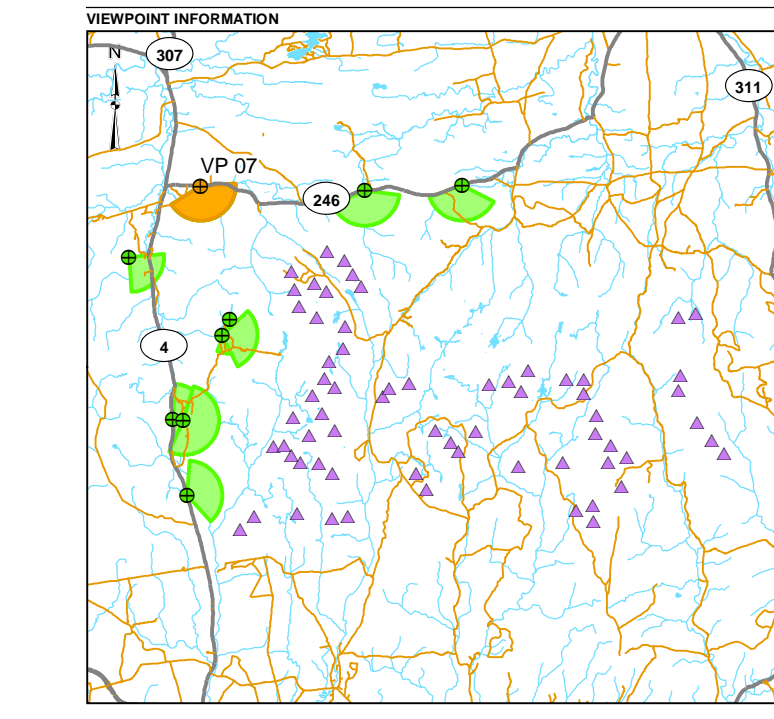
CONSULTANT	WSP	YYYY-MM-DD	2024-03-19
DESIGNED	PT		
PREPARED	BS		
REVIEWED	LB		
APPROVED	TC		



VIEWPOINT SIMULATION



BASELINE PHOTO



SCALE 1:325,000
KILOMETRES

- LEGEND**
- ▲ TURBINE LOCATION
 - CURRENT VIEWPOINT
 - VIEWPOINT
 - CURRENT VIEWPOINT FIELD OF VIEW
 - OTHER VIEWPOINT FIELD OF VIEW
 - HIGHWAY
 - LOCAL ROAD
 - WATERCOURSE
 - WATERBODY

NOTE
SOME TURBINES MIGHT BE (PARTIALLY) OBTAINED BY VEGETATION IN CLOSE PROXIMITY TO THE VIEWPOINT.

VIEWPOINT INFORMATION

VIEWPOINT NUMBER:	VP-07
EASTING:	458273 m
NORTHING:	505303 m
ELEVATION:	60 m
DATE:	15 DECEMBER 2023
WEATHER CONDITIONS:	OVERCAST (BLUE SKY DEPICTED)
DIRECTION:	SOUTH
FOCAL LENGTH:	80 mm
FIELD OF VIEW:	150°
HEIGHT OF CAMERA ABOVE GROUND:	1.7 m

REFERENCES
DIGITAL BASE DATA OBTAINED FROM GEOGRATIS, © DEPARTMENT OF NATURAL RESOURCES CANADA. ALL RIGHTS RESERVED.
DATUM: NAD83 PROJECTION: UTM ZONE 20

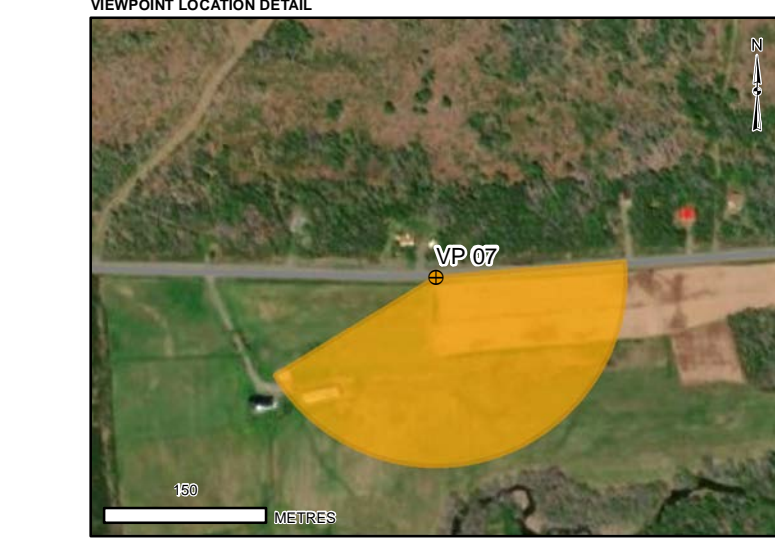
CLIENT
EVERWIND FUELS (EWF)

PROJECT
WINDY RIDGE & KMTNUK WIND PROJECTS

TITLE
VISUAL SIMULATION VIEWPOINT 07 - HIGHWAY 246-1 - 80MM

CONSULTANT	WSP
YYYY-MM-DD	2024-03-19
DESIGNED	PT
PREPARED	BS
REVIEWED	LB
APPROVED	TC

PROJECT NO. CONTROL REV. FIGURE
CA0020489.7754 1002 1 7-2

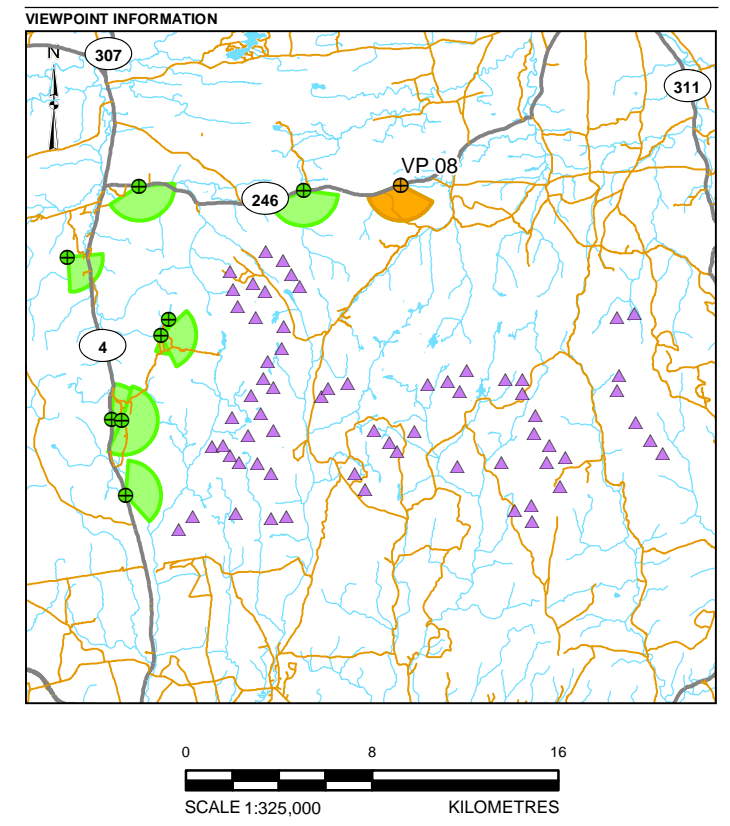


PATH: I:\CLIENTS\RES Canada\CA0020489_7754\Mappping\Visual\Rev1\CA0020489_7754_Fig8_Highway-246-2-50mm_blue-sky_Rev1.mxd PRINTED ON: 2024-03-19 AT: 1:22:54 PM

VIEWPOINT SIMULATION



BASELINE PHOTO



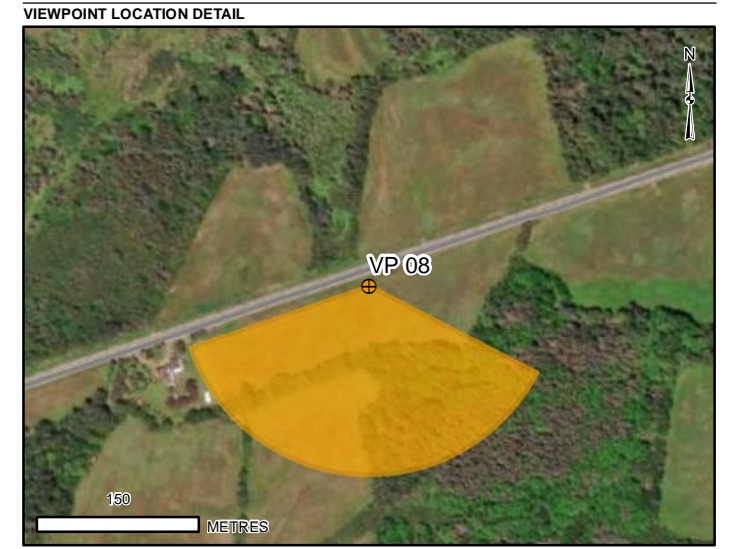
- LEGEND**
- ▲ TURBINE LOCATION
 - CURRENT VIEWPOINT
 - VIEWPOINT
 - CURRENT VIEWPOINT FIELD OF VIEW
 - OTHER VIEWPOINT FIELD OF VIEW
 - HIGHWAY
 - LOCAL ROAD
 - WATERCOURSE
 - WATERBODY

NOTE
SOME TURBINES MIGHT BE (PARTIALLY) OBSCURED BY VEGETATION IN CLOSE PROXIMITY TO THE VIEWPOINT.

VIEWPOINT INFORMATION

VIEWPOINT NUMBER:	VP-08
EASTING:	469537 m
NORTHING:	505323 m
ELEVATION:	98 m
DATE:	15 DECEMBER 2023
WEATHER CONDITIONS:	OVERCAST (BLUE SKY DEPICTED)
DIRECTION:	SOUTH
FOCAL LENGTH:	50 mm
FIELD OF VIEW:	-130°
HEIGHT OF CAMERA ABOVE GROUND:	1.7 m

REFERENCES
DIGITAL BASE DATA OBTAINED FROM GEOGRATIS, © DEPARTMENT OF NATURAL RESOURCES CANADA. ALL RIGHTS RESERVED
DATUM: NAD83 PROJECTION: UTM ZONE 20



CLIENT
EVERWIND FUELS (EWF)

PROJECT
WINDY RIDGE & KMTNUK WIND PROJECTS

TITLE
VISUAL SIMULATION VIEWPOINT 08 - HIGHWAY 246-2 - 50MM

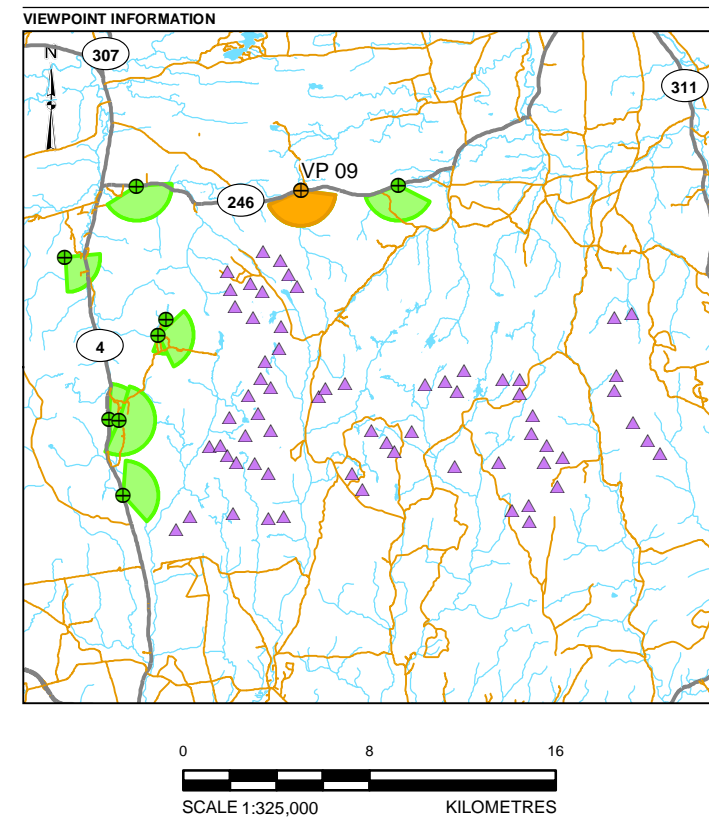
CONSULTANT	YYYY-MM-DD	2024-03-19
	DESIGNED	PT
	PREPARED	BS
	REVIEWED	LB
	APPROVED	TC

PROJECT NO.	CONTROL	REV.	FIGURE
CA0020489.7754	1002	1	8

VIEWPOINT SIMULATION



BASELINE PHOTO



LEGEND

TURBINE LOCATION	HIGHWAY
CURRENT VIEWPOINT	LOCAL ROAD
VIEWPOINT	WATERCOURSE
CURRENT VIEWPOINT FIELD OF VIEW	WATERBODY
OTHER VIEWPOINT FIELD OF VIEW	

NOTE
SOME TURBINES MIGHT BE (PARTIALLY) OBSCURED BY VEGETATION IN CLOSE PROXIMITY TO THE VIEWPOINT.

VIEWPOINT INFORMATION

VIEWPOINT NUMBER:	VP-09
EASTING:	465337 m
NORTHING:	5053095 m
ELEVATION:	108 m
DATE:	15 DECEMBER 2023
WEATHER CONDITIONS:	CLOUDY (BLUE SKY DEPICTED)
DIRECTION:	SOUTH
FOCAL LENGTH:	50 mm
FIELD OF VIEW:	-150°
HEIGHT OF CAMERA ABOVE GROUND:	1.7 m

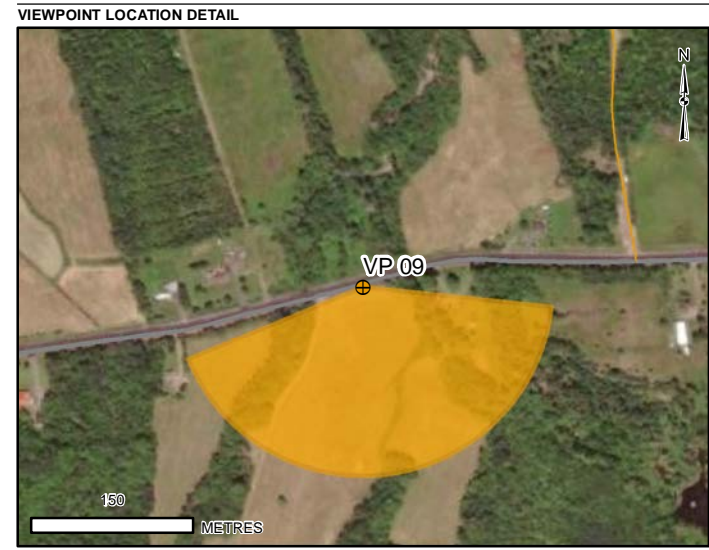
REFERENCES
DIGITAL BASE DATA OBTAINED FROM GEOGRATIS, © DEPARTMENT OF NATURAL RESOURCES CANADA. ALL RIGHTS RESERVED
DATUM: NAD83 PROJECTION: UTM ZONE 20

CLIENT
EVERWIND FUELS (EWF)

PROJECT
WINDY RIDGE & KMTNUK WIND PROJECTS

TITLE
VISUAL SIMULATION VIEWPOINT 09 - HIGHWAY 246-3 - 50MM

CONSULTANT	YYYY-MM-DD	2024-03-19	
	DESIGNED	PT	
	PREPARED	BS	
	REVIEWED	LB	
	APPROVED	TC	
PROJECT NO.	CONTROL	REV.	FIGURE
CA0020489.7754	1002	1	9



PATH: I:\CLIENTS\RES Canada\CA0020489_7754\Maping\Visual\Rev1\CA0020489_7754_Fig9_Highway-246-3-50mm_blue-sky_Rev1.mxd PRINTED ON: 2024-03-19 AT: 1:23:40 PM