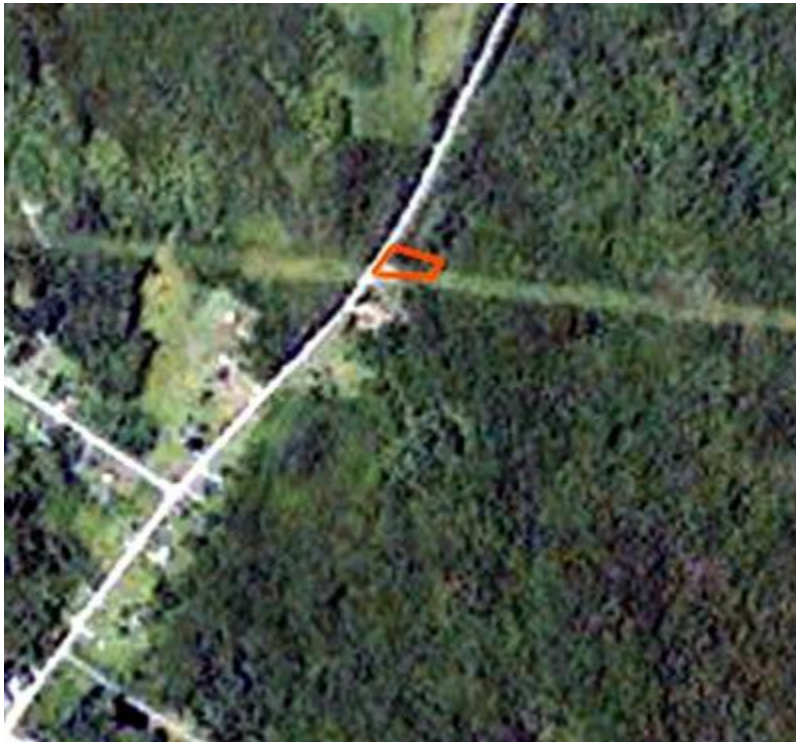


Chebogue Meadows Provincial Park



County

Yarmouth

Size

0.23 Hectares

Classification

Wayside

Status

Undesignated; Operational

Location NS Atlas

81 Z 3

Managed As

Supporting Park

Overview

Small property providing trailhead access to interpretive trail on adjoining Crown land

Education Values

Park property itself has little potential but serves as access to interpretive trail on adjacent Crown featuring a range of natural themes

Tourism Values

Provides access to interpretive trail

Outdoor Recreation Values

Hiking

NOVA SCOTIA

Chebogue Meadows Provincial Park and Park Reserve Series

8° Universal Transverse Mercator (UTM) Projection, Zone 20,
Central Meridian 63°00' West, North American Datum (NAD) 1983.
© Crown Copyright, Province of Nova Scotia, 2012.
All rights reserved.



- | | |
|-----------------|--------------------|
| Fire Station | Trans Canada |
| Hospital | Arterial Highway |
| Police Station | Collector Highway |
| School | Trunk Highway |
| Church | Paved Road |
| Building | Unpaved Road |
| Water Body | Track (2m & wider) |
| River / Stream | Trail / Footpath |
| County Boundary | Railway |
| | Abandoned Railway |
-
- | | |
|--|---------------------------------------|
| | Camping Park |
| | Day Use Park |
| | Park Reserve |
| | Crown Land |
| | Wilderness Area |
| | Nature Reserve |
| | National Historic Site, National Park |



Data Sources:
Nova Scotia Topographic Database 2010; Service Nova Scotia
and Municipal Relations
Wilderness Areas and Nature Reserves 2012; NS Department
of Environment
Crown Land, Provincial Parks and Park Reserves 2012;
Restricted and Limited
Use Lands 2007; NS Department of Natural Resources
Produced by the Nova Scotia Department of Natural Resources, 2012.
The Province of Nova Scotia accepts no liability for
any errors, omissions, or faults on this map.

