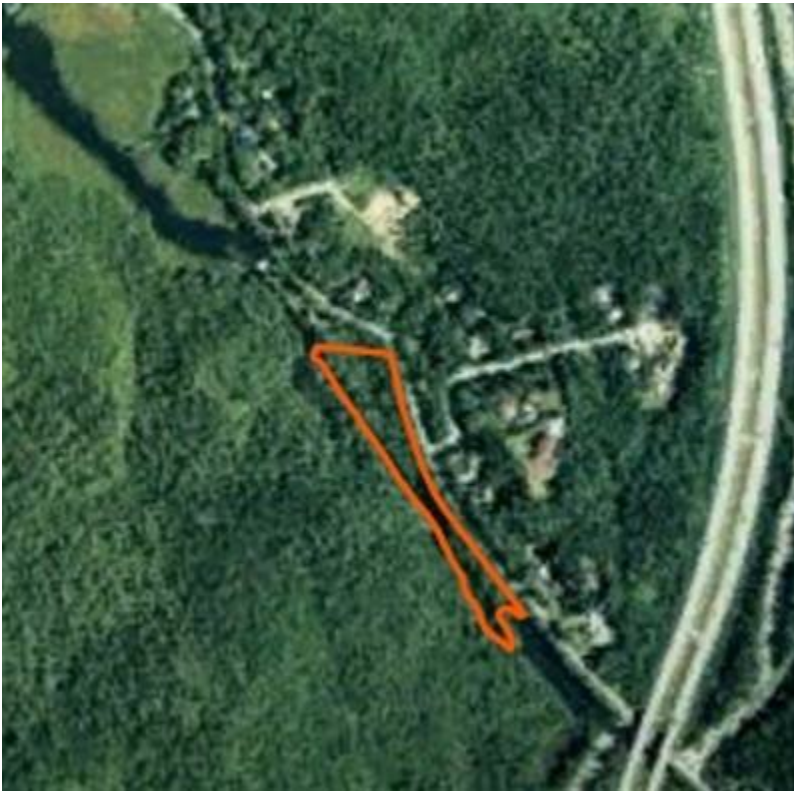


# Portobello Provincial Park



## County

Halifax

## Size

1.64 hectares

## Classification

Unclassified

## Status

Reserve

## Location NS Atlas

67 Z 1

## Managed As

Supporting Park

## Overview

Small property which protects important elements of the historic Shubenacadie Canal

## Protection Values

Contains old lock, canal works and inclined plane associated with the historic Shubenacadie Canal. Part of a broader system of properties associated with the Shubenacadie Canal.

## Education Values

Shubenacadie Canal

## Tourism Values

Shubenacadie Canal; portage between Lake Charles and Lake Williams

## Outdoor Recreation Values

Canoeing / kayaking as part of the Shubenacadie Canal system.

Walking trail

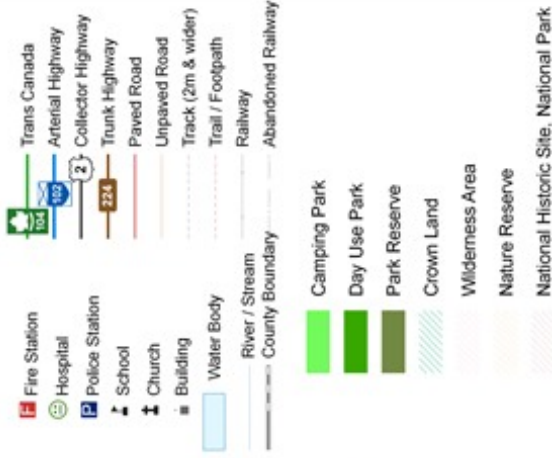
## Annual Visitation

Unknown

## Other Site Considerations

Limited vehicle access, with small parking lot.

© Universal Transverse Mercator (UTM) Projection, Zone 20, Central Meridian 63°00' West, North American Datum (NAD) 1983.  
 © Crown Copyright, Province of Nova Scotia, 2012.  
 All rights reserved.



Data Sources:  
 Nova Scotia Topographic Database 2010; Service Nova Scotia and Municipal Relations  
 Wilderness Areas and Nature Reserves 2012; NS Department of Environment  
 Crown Land, Provincial Parks and Park Reserves 2012;  
 Use Lands 2007; NS Department of Natural Resources  
 Produced by the Nova Scotia Department of Natural Resources, 2012.  
 The Province of Nova Scotia accepts no liability for any errors, omissions, or faults on this map.

