

Wentzells Lake Provincial Park



County

Lunenburg

Size

23.62 Hectares

Classification

Unclassified

Status

Designated; Non-operational

Location NS Atlas

73 Y 1

Managed As

Supporting Park

Overview

Attractive property on LaHave River and Wentzells Lake with important conservation values.

Protection Values

Mature forest stand. One species of vascular plant found on this property is listed as being imperiled. Turtles.

Outdoor Recreation Values

Walking, carry-in boating, picnicking, fishing

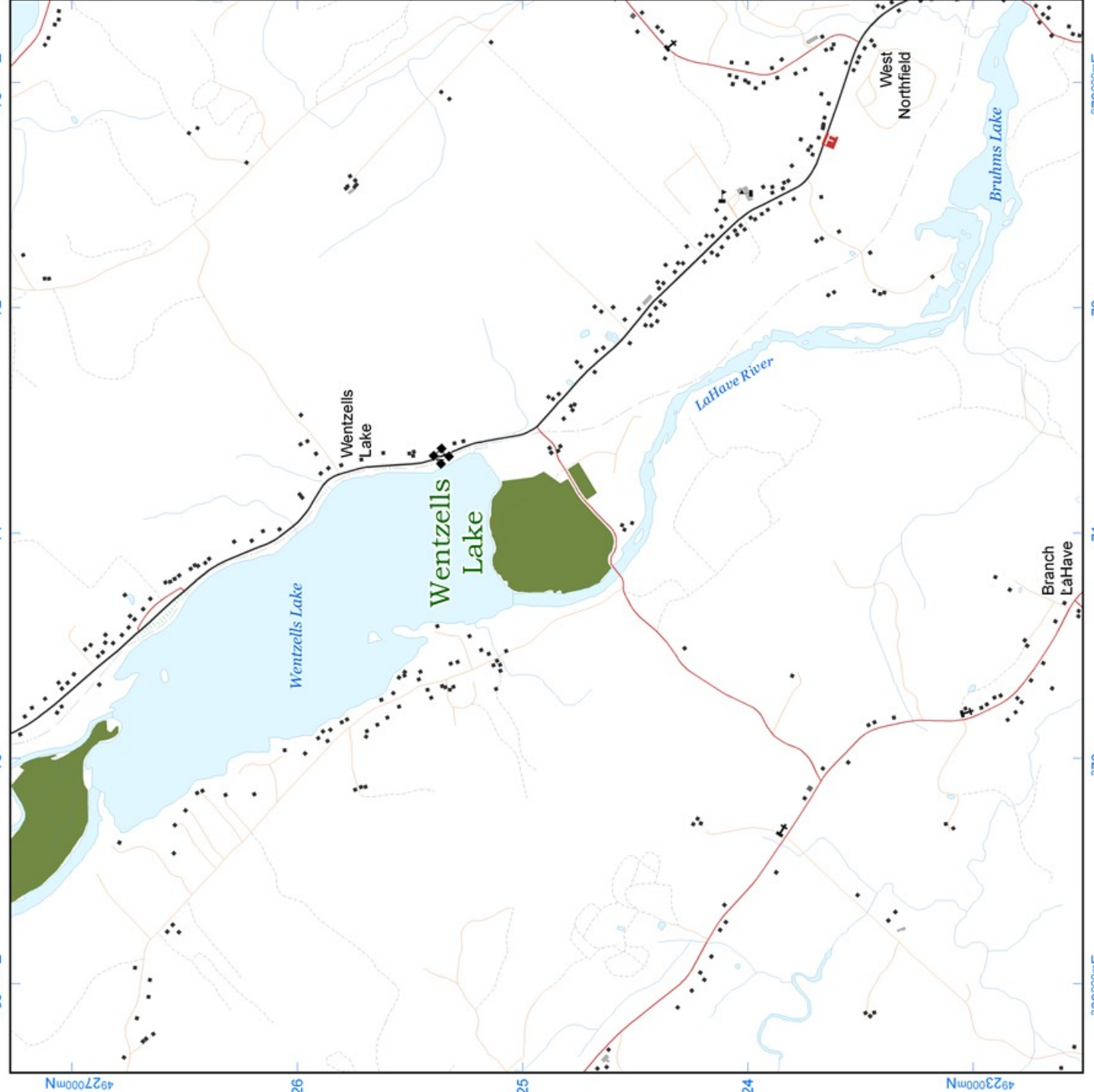
NOVA SCOTIA

Wentzells Lake Provincial Park and Park Reserve Series

8° Universal Transverse Mercator (UTM) Projection, Zone 20,
Central Meridian 63°00' West, North American Datum (NAD) 1983.
© Crown Copyright, Province of Nova Scotia, 2012.
All rights reserved.



- | | |
|-------------------|---------------------------------------|
| Fire Station | Trans Canada |
| Hospital | Arterial Highway |
| Police Station | Collector Highway |
| School | Trunk Highway |
| Church | Paved Road |
| Building | Unpaved Road |
| Water Body | Track (2m & wider) |
| River / Stream | Trail / Footpath |
| County Boundary | Railway |
| Abandoned Railway | Camping Park |
| | Day Use Park |
| | Park Reserve |
| | Crown Land |
| | Wilderness Area |
| | Nature Reserve |
| | National Historic Site, National Park |



Data Sources:
Nova Scotia Topographic Database 2010; Service Nova Scotia
and Municipal Relations
Wilderness Areas and Nature Reserves 2012; NS Department
of Environment
Crown Land, Provincial Parks and Park Reserves 2012;
Restricted and Limited
Use Lands 2007; NS Department of Natural Resources
Produced by the Nova Scotia Department of Natural Resources, 2012.
The Province of Nova Scotia accepts no liability for
any errors, omissions, or faults on this map.