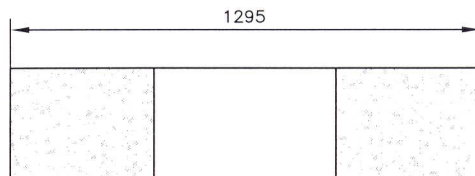
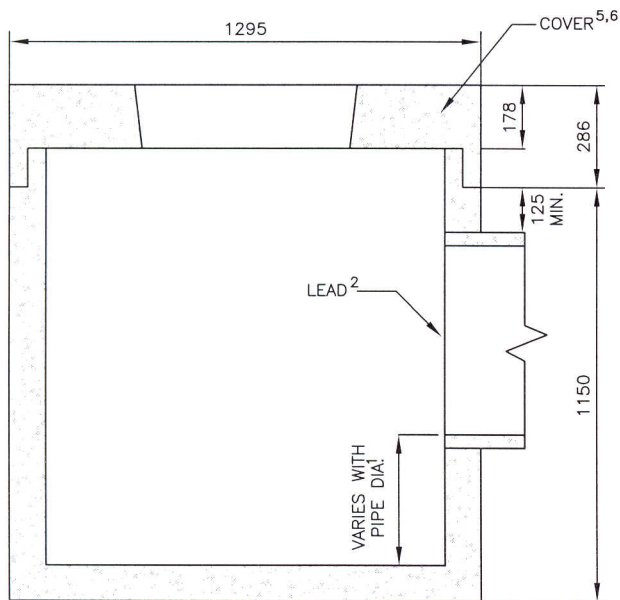


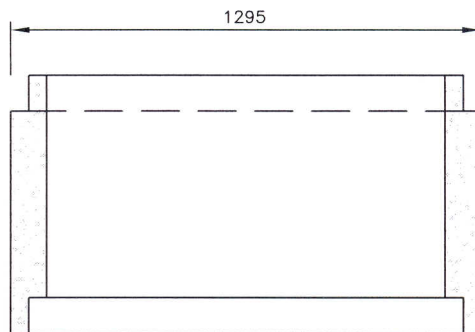
PLAN



GRADE RING DETAIL<sup>4</sup>



SECTION A-A



INTERMEDIATE RING DETAIL<sup>3</sup>

NOTES:

1. MINIMUM SUMP 450mm.
2. MAXIMUM 3 LEADS (2-600mm , 1-300mm )
3. INTERMEDIATE RINGS AVAILABLE IN 500mm, 750mm, 1000mm, 1250mm DEPTHS.
4. GRADE RINGS AVAILABLE IN 150mm, 300mm & 400mm DEPTHS.
5. REQUIRED COVER S401 OR S361 OR EQUIVALENT.
6. OPTIONAL COVERS AVAILABLE CPC 175D (DUPEX COVER) OR CPC 450 (50 000kg LOADING).
7. ALL DIMENSIONS ARE IN MILLIMETRES UNLESS OTHERWISE NOTED.

Scale : N.T.S.  
 Drawn by : M.LABRECHE  
 Checked by : W.DEVEAU  
 Date of Plan : AUG2009  
 File No. : S-2009-055

*Philip Cohen*  
 Manager Highway Planning and Design

*[Signature]*  
 Director Highway Engineering Services

*[Signature]*  
 Executive Director Highway Engineering and Construction



Transportation and Infrastructure Renewal

No.	REVISION

**TYPICAL 1050mm Ø CATCH BASIN**