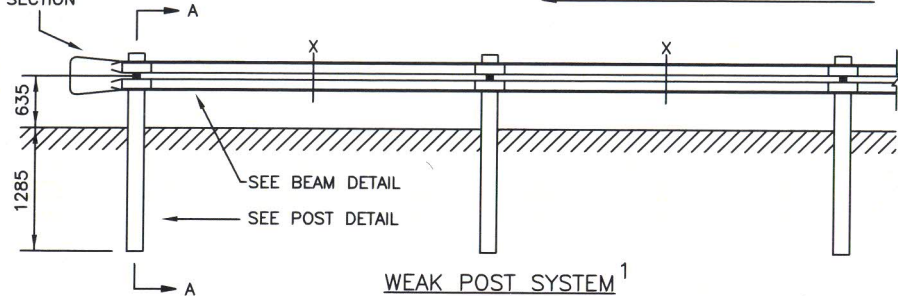
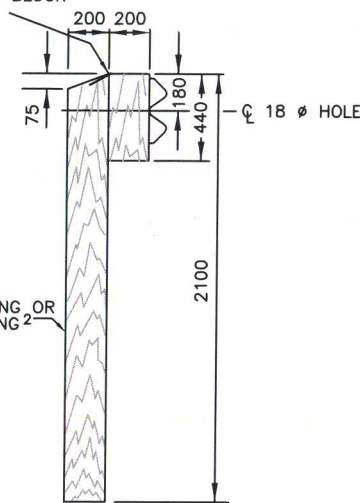


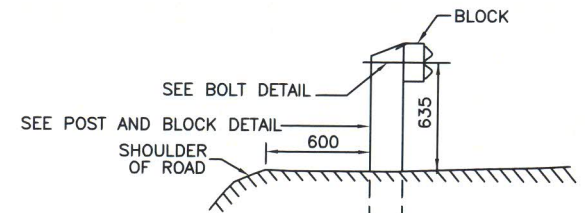
WEAK POST SYSTEM<sup>1</sup>



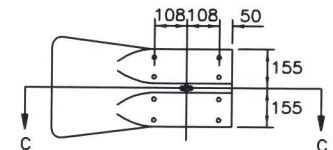
1-100mm SPIKE TOE  
NAILED THROUGH BLOCK  
INTO POST



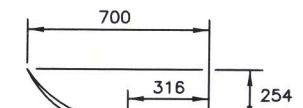
POST AND  
BLOCK DETAIL



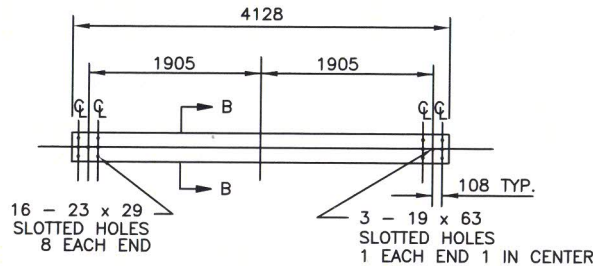
SECTION A-A



BEAM TERMINAL DETAIL<sup>3</sup>

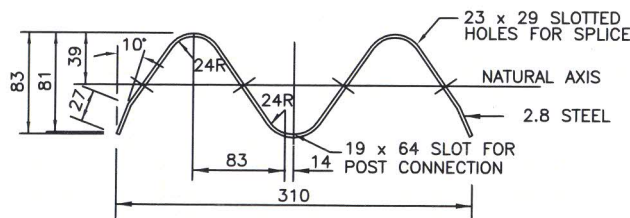


SECTION C-C

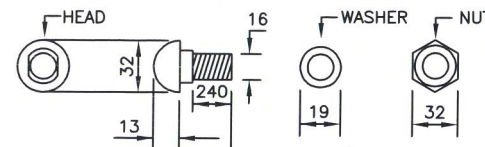


BEAM DETAIL

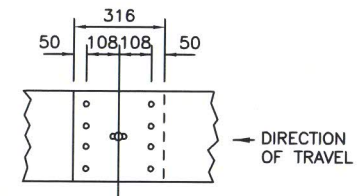
GUARD RAIL POST  
200 x 200 x 2100 LONG OR  
150 x 200 x 2100 LONG<sup>2</sup>



SECTION B-B



BOLT DETAIL<sup>4</sup>



BEAM  
SPLICE DETAIL

NOTES:

1. FOR STRONG POST SYSTEM, ADD POST AT POINT X.
2. IF 150 x 200 x 2100 LONG POSTS ARE USED, THE MATERIAL IS TO BE HARDWOOD.
3. TERMINAL SECTION ONLY APPROPRIATE FOR 4-LANE DIVIDED HIGHWAYS.

4. ALL BOLTS, NUTS AND WASHERS SHALL BE GALVANIZED BY THE HOT DIP PROCESS. BOLTS SHALL BE CAPABLE OF WITHSTANDING 106 kN IN SINGLE SHEAR. 16mm SQUARE NUT AND 19mm ROUND WASHERS ARE TO BE USED. ONE WASHER FOR EACH 240mm x 16mm BOLT. BOLTS ARE TO HAVE 75mm THREADS. FOR STRONG POST SYSTEM BOLT LENGTH SHALL BE 440mm.
5. ALL DIMENSIONS ARE IN MILLIMETRES UNLESS OTHERWISE NOTED.

*Burton*  
Manager Highway Planning and Design

*...*  
Director Highway Engineering Services

*...*  
Executive Director Highway Engineering and Construction

**GUARD RAIL AND POST DETAILS  
HS518**



No.	REVISION
3	UPDATED TO AAHSTO STANDARD. JAN15
2	BEAM SPLICE DETAIL MODIFIED /SEP10
1	DETAILS, NOTES, TITLES /FEB 10

Scale : N.T.S.  
 Drawn by : M.LABRECHE  
 Checked by : J.RAE  
 Date of Plan : AUG2009  
 File No. : S-2009-071