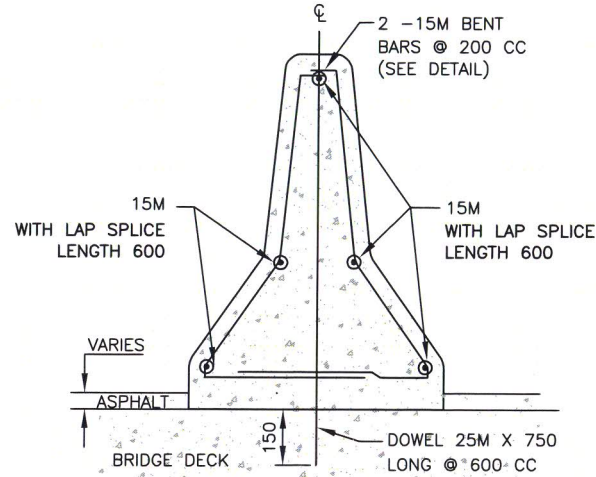
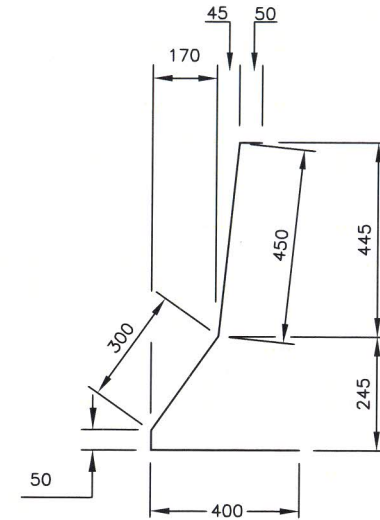


BARRIER OVER ROADWAY



BARRIER OVER BRIDGES



BENT BAR DETAIL

NOTES:

1. CONCRETE SHALL BE CONSTRUCTED IN ACCORDANCE WITH DIVISION 5, SECTION 7 OF STANDARD SPECIFICATIONS.
2. TRAVERSE JOINTS ARE RECOMMENDED AT 6.0m INTERVALS (MAXIMUM).
3. CONCRETE VOLUME = 0.254 CUBIC m/m.
4. OUTSIDE CORNERS TO BE FINISHED TO 25R.
5. EXPOSED ENDS FACING TRAFFIC SHOULD BE PROTECTED USING ONE OF THE TRACC FAMILY END TREATMENTS OR THE HEART END TREATMENT, BOTH BY TRINITY OR AN EQUIVALENT NCHRP 350 TEST LEVEL 3 END TREATMENT.
6. ALL DIMENSIONS ARE IN MILLIMETERS UNLESS OTHERWISE NOTED.
7. 3M 340 LINEAR DELINEATION SYSTEM (LDS) OR EQUIVALENT REFLECTORS ARE PLACED 100 MM DOWN FROM THE TOP OF THE BARRIER, EVERY 20 METRES. THE COLOUR IS YELLOW FOR MEDIAN BARRIER.
8. THE LDS COLOUR IS WHITE WHEN THE BARRIER IS USED ON THE RIGHT SIDE OF THE ROAD



3	LDS NOTES ADDED. MAR 2014
2	EMBEDDING DEPTH SHOWN
1	HS # ADDED TO TITLE
No.	REVISION

Scale : N.T.S.
 Drawn by : M.LABRECHE
 Checked by : K.BODDY
 Date of Plan : AUG2009
 File No. : S-2009-022

B. White
 Manager Highway Planning and Design
B. Boddy
 Director Highway Engineering Services
K. Boddy
 Executive Director Highway Engineering and Construction

**JERSEY BARRIER
 HS529**