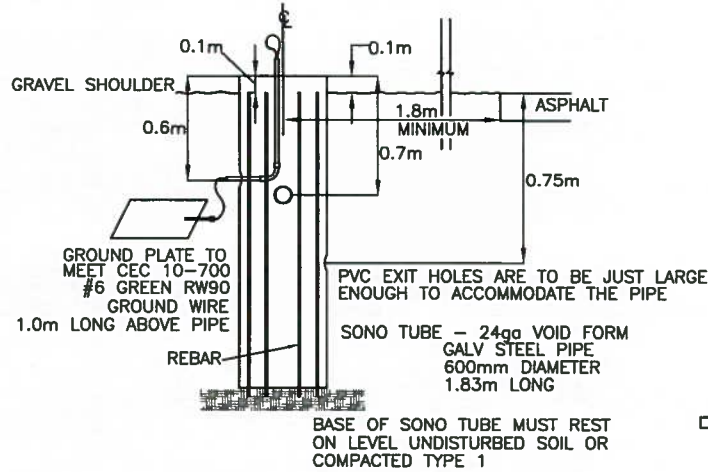
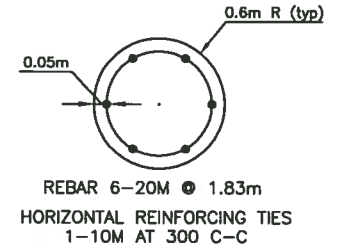


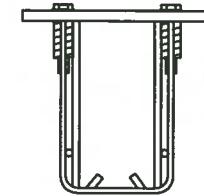
TYPE A CURBED ROAD OR ISLAND



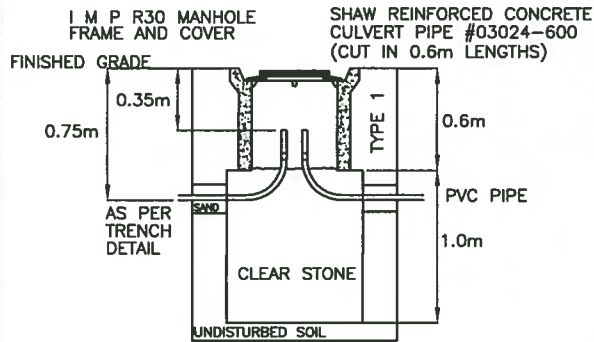
TYPE B NO CURB



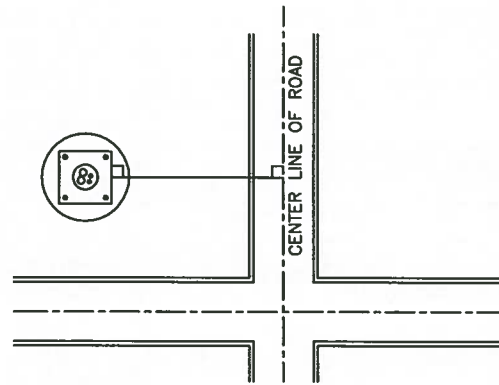
REBAR LAYOUT DETAIL



**NATIONAL CONCRETE ACCESSORIES
ACROW-RICHMOND
1 1/2" DIA. PRESET ANCHOR TYPE
DGR-2 - 368MM BOLT CENTER DIA.**



PULL PIT



ANCHOR ORIENTATION

ANCHOR NOTES:

- ALIGNMENT ERROR OF GREATER THAN 5 DEGREES WILL NECESSITATE THE REPLACEMENT OF THE CONCRETE BASE. SIGNAL EQUIPMENT IS PREMANUFACTURED BASED ON A 5 DEGREE ERROR TOLERANCE.
- ANCHOR ALIGNMENT IS ACHIEVED BY STANDING BEHIND THE SIGNAL POLE BASE LOOKING TO THE CENTRE OF THE INTERSECTION. THE ANCHOR IS ALIGNED PARALLEL TO THE CENTRE LINE OF THE ROAD ON THE IMMEDIATE LEFT.
- HOLE DIAMETER IN ANCHOR PLATE MUST NOT BE ALTERED. HOLE SIZE IS MAXIMUM ALLOWABLE FOR POLE IN USE.
- ANCHOR PLATE MUST BE LEVEL BOTH NORTH, SOUTH AND EAST, WEST. BOTTOM OF ANCHOR PLATE MUST BE FLUSH WITH TOP OF CONCRETE AND IN THE CENTRE OF THE BASE. DO NOT PUSH INTO CONCRETE.
- PRIOR TO CONCRETE SET, REMOVE BOLT TEMPLATE AND FINISH SURFACE TO A SMOOTH UNIFORM FINISH, FREE OF OPEN TEXTURING AND EXPOSED AGGREGATE. REPLACE TEMPLATE AND PLACE BOLTS FULLY INTO THREADED FERRULES (HAND TIGHT). ANCHOR STRUTS MUST BE AT OR BELOW THE SURFACE OF THE CONCRETE.

POLE ANCHOR DETAIL

NOTES:

- REBAR:**
- REBAR IS SPACED EQUALLY AROUND THE SONO TUBE AS SHOWN. ENSURE THE ENDS ARE TAPPED DOWN 0.1m BELOW TOP OF SONO TUBE FOR CONCRETE COVERAGE AND ANCHOR CLEARANCE.
- COMPACTION:**
- BACKFILL IN 0.3m LIFTS IN ACCORDANCE WITH ELECTRICAL CODE SECTION 12-012 AND TABLE 53. COMPACTION IS TO BE DONE IN SUCCESSIVE LAYERS. COMPACTION IS TO

BE DONE UNTIL THERE IS VISIBLE EVIDENCE OF NO FURTHER CONSOLIDATION (98% PROCTOR DENSITY).

- MAXIMUM SINGLE LIFT IS 0.3m.

- CONCRETE:**
- TIR STANDARD SPECIFICATION DIVISION 5 SECTION 7:
- 35 MPa
 - 6% AIR ENTRAINMENT.
 - 80mm SLUMP.

Michael Pitt
 Manager Traffic Engineering and Road Safety

James
 Director Road Safety

John
 Executive Director Highway Engineering and Construction

**FOUNDATION AND PULL PIT DETAIL
TRAFFIC SIGNALS ALUMINUM POLE**



No.	REVISION
1	REVISION TO ANCHOR NOTES

Scale : N.T.S.
 Drawn by : P.HILL/L.MACLEAN
 Checked by : A.THOMAS
 Date of Plan : APR2016
 File No. : S-2016-093