

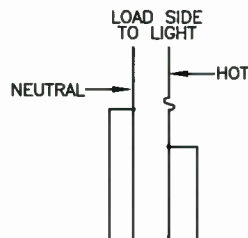
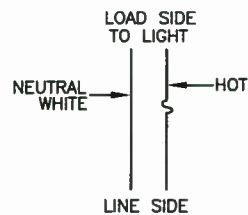
FUSE KIT ON LINE SIDE
PIGTAIL TO FUSE IF CIRCUIT
CONTINUES

NEUTRALS SHALL BE JOINED
USING SPLIT BOLTS AND COVERED
WITH VINYL TAPE

GROUND WIRE SHALL BE
TIGHTENED IN TERMINAL LUG
WHICH IN TURN IS FASTENED TO
GROUND BAR IN POLE

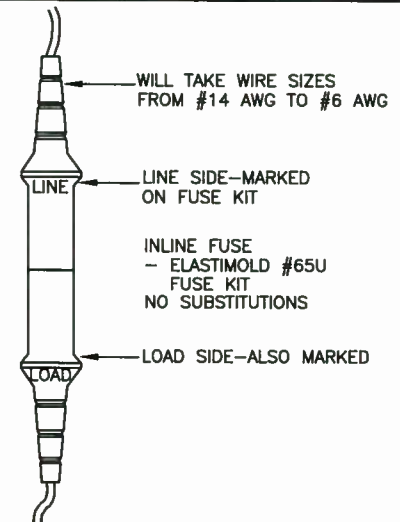
WIRES COMING DOWN POLE AND UP
FROM CONDUIT SHOULD BE 1m IN
LENGTH WHEN PULLED THROUGH
TRANSFORMER BASE ACCESS HOLE

17" ASSHTO APPROVED BREAKAWAY
TRANSFORMER BASE.
LOCKING TRANSFORMER BASE DOOR
PELCO BRAND PB-5520 (9 1/4 X 9 1/4 X 11 1/2)
OR APPROVED EQUIVALENT

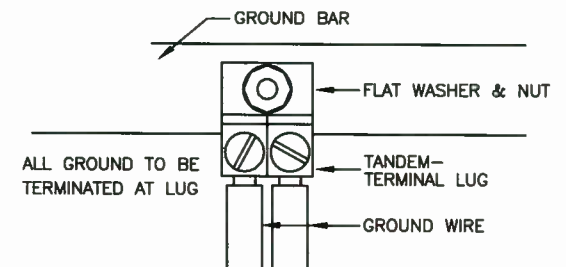


THIS DIAGRAM TO BE USED
IF CIRCUIT CONTINUES TO
ANOTHER POLE

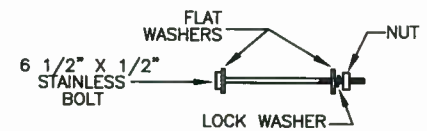
PIGTAILS SHALL BE MADE
WITH SPLIT BOLTS,
COVERED WITH RUBBER
COMPOUND TAPE (3M 130C) &
VINYL TAPE (3M 88) OR
EQUIVALENT



FUSE DETAIL



GROUND CONNECTION DETAIL



BOLT DETAIL

NOTES:

- HIGHWAY LIGHTING POLE - C/W DAVIT
1. VALMONT/FERALUX PART NO. 11-40010C1060
 2. METAL POLE-LITE PART NO. LRD-1035-4010S
 3. 12.2m MOUNTING HEIGHT (typ.)
 4. 3.0m DAVIT
 5. 368mm BOLT CIRCLE

6. VALMONT/FERALUX PART NO. 12-40010ES1060 (DOUBLE DAVIT)
7. SINGLE DAVIT - 3m OFFSET
8. 188 WALL THICKNESS
9. SHAFT TENON TO BE ONE PIECE (NO WELDING)

HIGHWAY LIGHTING POLE - STRAIGHT SHAFT HORIZONTAL TENON

1. VALMONT/FERALUX PART NO. 81-400C1060-HT1-VD
2. METAL POLE-LITE PART NO. FTC-106-40-188-T2.38 -HORIZ
3. C/W WIRE STRAIN RELIEF
4. 12.2m MOUNTING HEIGHT (typ.)

Michael Hill
Manager Traffic Engineering and Road Safety

Michael Hill
Director Road Safety

John Macleod
Executive Director Highway Engineering and Construction



2	ADDED TRANSFORMER BASE
1	POLE PART NO. CORRECTIONS
No.	REVISION

Scale : N.T.S.
 Drawn by : P.HILL
 Checked by : A.THOMAS
 Date of Plan : APR2016
 File No. : S-2016-113

POLE WIRING DETAILS
HIGHWAY LIGHTING