

*Nova Scotia Department of Transportation and Public Works
2003 Motor Vehicle Collision Information*

*Persons Involved by Injury Severity and Age Group
CMVTCS Pamphlet - 01*

<i>Age Group (Years)</i>	<i>Not Injured</i>	<i>Injured</i>	<i>Killed</i>	<i>Total</i>
1 To 4	495	48	0	543
5 To 15	1158	246	1	1405
16 To 19	2653	605	3	3261
20 To 24	2474	626	7	3107
25 To 34	3659	927	19	4605
35 To 44	3841	821	14	4676
45 To 54	3174	629	7	3810
55 To 64	1884	375	5	2264
65 Or Older	1898	337	14	2249
Unspecified	4129	677	0	4806
<i>Grand Total</i>	25365	5291	70	30726

Nova Scotia Department of Transportation and Public Works
2003 Motor Vehicle Collision Information

Fatalities by Road User Class

CMVTCS Pamphlet - 02

<i>Victim Class</i>	<i>1999</i>	<i>2000</i>	<i>2001</i>	<i>2002</i>	<i>2003</i>
Pedestrian	13	8	7	12	9
Bicyclist	4	1	1	1	1
Motorcycle Passenger	1	0	0	2	0
Motorcycle Driver	6	7	5	4	3
Snowmobile Passenger	0	0	0	0	0
Snowmobile Driver	0	0	1	0	0
Off Hwy. Veh. Passenger	0	1	0	0	0
Off Hwy. Veh. Driver	1	0	2	3	1
Motor Vehicle Passenger	19	20	15	27	12
Motor Vehicle Driver	53	50	49	39	44
Not Stated	0	0	0	0	0
<i>Grand Total</i>	97	87	80	88	70

*Nova Scotia Department of Transportation and Public Works
2003 Motor Vehicle Collision Information*

Serious Injuries by Road User Class

CMVTCS Pamphlet - 02a

<i>Victim Class</i>	<i>1999</i>	<i>2000</i>	<i>2001</i>	<i>2002</i>	<i>2003</i>
Pedestrian	56	38	33	33	36
Bicyclist	8	3	5	4	7
Motorcycle Passenger	6	2	2	4	6
Motorcycle Driver	30	21	27	33	25
Snowmobile Passenger	0	0	0	0	0
Snowmobile Driver	0	0	0	3	2
Off Hwy. Veh. Passenger	2	2	2	4	4
Off Hwy. Veh. Driver	3	17	9	9	10
Motor Vehicle Passenger	129	90	89	103	67
Motor Vehicle Driver	204	197	192	189	143
Not Stated	6	16	13	3	4
<i>Grand Total</i>	444	386	372	385	304

*Nova Scotia Department of Transportation and Public Works
2003 Motor Vehicle Collision Information*

*Number of Traffic Collisions By Weather Condition
CMVTCS Pamphlet - 03*

<i>Weather Condition</i>	<i>Property Damage</i>	<i>Personal Injury</i>	<i>Fatal</i>	<i>Total</i>
Clear	5558	2327	37	7922
Cloudy	1222	569	13	1804
Raining	750	375	4	1129
Snowing	622	203	3	828
Sleet/Hail/Freezing Rain	100	51	1	152
Fog/Smoke/Smog	89	64	0	153
Drifting Snow/Dust	105	51	0	156
Strong Wind	37	10	3	50
Not Stated	230	90	0	320
<i>Grand Total</i>	<i>8713</i>	<i>3740</i>	<i>61</i>	<i>12514</i>

Nova Scotia Department of Transportation and Public Works
2003 Motor Vehicle Collision Information
Drivers and Passengers Killed or Seriously Injured by Age Group

TCSC Pamphlet - 9

	<i>Drivers</i>		<i>Passengers</i>	
	<i>Killed</i>	<i>Seriously Injured</i>	<i>Killed</i>	<i>Seriously Injured</i>
1 To 4	0	0	0	0
5 To 15	0	0	1	6
16 To 19	1	15	0	10
20 To 24	3	16	2	11
25 To 34	14	24	3	10
35 To 44	10	22	1	7
45 To 54	5	19	1	5
55 To 64	3	14	0	4
65 Or Older	7	23	4	6
Unspecified	0	10	0	8
<i>Total</i>	43	143	12	67

Drivers and passengers of vehicles in this table exclude bicyclist, and drivers and passengers of all off-road vehicles, such as all terrain vehicles, snowmobiles, farm vehicles and construction equipment.

Serious injuries in this table means major injury, hospitalized, victim went to hospital and was admitted for treatment or an observation period of 24 hours or an overnight stay.

Nova Scotia Department of Transportation and Public Works

2003 Motor Vehicle Collision Information

Number of Traffic Collisions By Light Condition

CMVTCS Pamphlet - 04

<i>Light Condition</i>	<i>Property Damage</i>	<i>Personal Injury</i>	<i>Fatal</i>	<i>Total</i>
Daylight	6238	2700	35	8973
Dark	1602	684	17	2303
Dusk	378	146	3	527
Dawn	75	55	1	131
Artificial light	242	92	5	339
Not Stated	178	63	0	241
<i>Grand Total</i>	<i>8713</i>	<i>3740</i>	<i>61</i>	<i>12514</i>

*Nova Scotia Department of Transportation and Public Works
2003 Motor Vehicle Collision Information*

Number of Traffic Collisions By Place of Occurrence

CMVTCS Pamphlet - 05

<i>Place of Occurrence</i>	<i>Property Damage</i>	<i>Personal Injury</i>	<i>Fatal</i>	<i>Total</i>
Urban (1)	5980	2274	11	8265
Rural (2)	2393	1341	50	3784
Not Stated	340	125	0	465
Grand Total	8713	3740	61	12514

(1) Urban Includes:

- a) Metropolitan roads and streets and other urban areas*
- b) a speed limit at the collision site of 60 km/h or less*

(2) Rural Includes:

- a) primary and secondary highways, as well as local roads*
- b) a speed limit at the collision site exceeding 60 km/h*

Nova Scotia Department of Transportation and Public Works

2003 Motor Vehicle Collision Information

Casualties By Time of Day

CMVTCS Pamphlet - 06

<i>Time of Day</i>	<i>Casualtie</i>
12:00 a.m. to 1:00 a.m	67
1:00 a.m. to 2:00 a.m.	63
2:00 a.m. to 3:00 a.m	72
3:00 a.m. to 4:00 a.m	41
4:00 a.m. to 5:00 a.m	35
5:00 a.m. to 6:00 a.m	46
6:00 a.m. to 7:00 a.m	62
7:00 a.m. to 8:00 a.m	184
8:00 a.m. to 9:00 a.m	275
9:00 a.m. to 10:00 a.m	233
10:00 a.m. to 11:00 a.m	274
11:00 a.m. to 12:00 p.m	274
12:00 p.m. to 1:00 p.m	340
1:00 p.m. to 2:00 p.m	367
2:00 p.m. to 3:00 p.m	356
3:00 p.m. to 4:00 p.m	456
4:00 p.m. to 5:00 p.m	451
5:00 p.m. to 6:00 p.m	442
6:00 p.m. to 7:00 p.m	269
7:00 p.m. to 8:00 p.m	233
8:00 p.m. to 9:00 p.m	177
9:00 p.m. to 10:00 p.m	186
10:00 p.m. to 11:00 p.m	136
11:00 p.m. to 12:00 a.m	129
Not Stated	193
<i>Grand Total</i>	<i>5361</i>

Note: Casualties include all road users killed or injured in reportable traffic collisions.

Nova Scotia Department of Transportation and Public Works
2003 Motor Vehicle Collision Information
Casualties By Month of Occurrence
CMVTCS Pamphlet - 07

<i>Month</i>	<i>Casualties</i>
January	514
February	413
March	359
April	386
May	391
June	447
July	498
August	520
September	452
October	495
November	450
December	436
<i>Grand Total</i>	<i>5361</i>

Note: Casualties include all road users killed or injured in reportable traffic collisions.

*Nova Scotia Department of Transportation and Public Works
2003 Motor Vehicle Collision Information*

*Numbers of Drivers and Passengers Killed or Seriously Injured Indicating
Use/Non-Use of SeatBelts/Child Restraint Systems*

TCSC Pamphlet - 8

	<i>Drivers</i>		<i>Passengers</i>	
	<i>Killed</i>	<i>Seriously Injured</i>	<i>Killed</i>	<i>Seriously Injured</i>
Seat Belt Used	23	98	9	36
Seat Belt Not Used	19	20	2	18
Child Restraint System Used	0	0	0	0
Child Restraint System Not Used	0	0	0	0
Not Stated	1	15	1	5
<i>Total</i>	43	133	12	59

Drivers and passengers of vehicles where safety device use means the wearing of seat belts or the use of child restraint systems. Vehicles in this table exclude bicycles, motorcycles and mopeds, and all off-road vehicles, such as all terrain vehicles, snowmobiles, farm vehicles and construction equipment.

Serious injuries in this table means major injury, hospitalized, victim went to hospital and was admitted for treatment or an observation period of 24 hours or an overnight stay.

Nova Scotia Department of Transportation and Public Works
2003 Motor Vehicle Collision Information
Road Users Killed or Seriously Injured by Road User Class

TCSC Pamphlet - 10

<i>Victim</i>	<i>Killed</i>	<i>Seriously Injured</i>
Pedestrian	9	36
Bicyclist	1	7
Motorcycle Passenger	0	6
Motorcycle Driver	3	25
Snowmobile Passenger	0	0
Snowmobile Driver	0	2
Off Hwy. Veh. Passenger	0	4
Off Hwy. Veh. Driver	1	10
Motor Vehicle Passenger	12	67
Motor Vehicle Driver	44	143
Not Stated	0	4
<i>Total</i>	70	304

Motorcyclists include moped riders.

Serious injuries in this table means major injury, hospitalized, victim went to hospital and was admitted for treatment or an observation period of 24 hours or an overnight stay.

*Nova Scotia Department of Transportation and Public Works
2003 Motor Vehicle Collision Information*

*No. of Pedestrians in Reportable Traffic Collisions
By Place of Occurrence and Injury Severity*

TCSC Table - 25

<i>Place of Occurrence</i>	<i>Not Injured</i>	<i>Injured</i>	<i>Killed</i>	<i>Total</i>
Urban (1)	48	281	5	334
Rural (2)	6	43	4	53
Not Stated	1	5	0	6
<i>Grand Total</i>	55	329	9	393

(1) Urban Includes:

- a) Metropolitan roads and streets and other urban areas*
- b) a speed limit at the collision site of 60 km/h or less*

(2) Rural Includes:

- a) primary and secondary highways, as well as local roads*
- b) a speed limit at the collision site exceeding 60 km/h*

*Nova Scotia Department of Transportation and Public Works
2003 Motor Vehicle Collision Information*

Reportable Traffic Collisions by Month of Occurrence

TCSC Table - 01

<i>Month</i>	<i>Property Damage</i>	<i>Personal Injury</i>	<i>Fatal</i>	<i>Total</i>
January	1047	367	4	1418
February	945	286	2	1233
March	773	245	4	1022
April	568	261	5	834
May	556	268	6	830
June	631	302	5	938
July	691	354	8	1053
August	688	331	8	1027
September	618	317	8	943
October	692	352	2	1046
November	680	331	7	1018
December	824	326	2	1152
<i>Grand Total</i>	<i>8713</i>	<i>3740</i>	<i>61</i>	<i>12514</i>

*Nova Scotia Department of Transportation and Public Works
2003 Motor Vehicle Collision Information*

Reportable Traffic Collisions by Day of Occurrence

TCSC Table - 02

<i>Day</i>	<i>Property Damage</i>	<i>Personal Injury</i>	<i>Fatal</i>	<i>Total</i>
Sunday	855	413	10	1278
Monday	1224	537	4	1765
Tuesday	1207	501	9	1717
Wednesday	1321	576	1	1898
Thursday	1341	556	5	1902
Friday	1548	644	15	2207
Saturday	1217	513	17	1747
<i>Grand Total</i>	8713	3740	61	12514

Nova Scotia Department of Transportation and Public Works

2003 Motor Vehicle Collision Information

Reportable Traffic Collisions by Hour of Occurrence

TCSC Table - 03

<i>Hour</i>	<i>Property Damage</i>	<i>Personal Injury</i>	<i>Fatal</i>	<i>Total</i>
12:00 a.m. to 1:00 a.m	95	47	1	143
1:00 a.m. to 2:00 a.m.	68	41	7	116
2:00 a.m. to 3:00 a.m	103	49	2	154
3:00 a.m. to 4:00 a.m	79	33	1	113
4:00 a.m. to 5:00 a.m	47	30	1	78
5:00 a.m. to 6:00 a.m	65	37	3	105
6:00 a.m. to 7:00 a.m	137	51	2	190
7:00 a.m. to 8:00 a.m	314	138	1	453
8:00 a.m. to 9:00 a.m	467	208	4	679
9:00 a.m. to 10:00 a.m	396	176	2	574
10:00 a.m. to 11:00 a.m	455	189	1	645
11:00 a.m. to 12:00 p.m	477	188	0	665
12:00 p.m. to 1:00 p.m	583	246	1	830
1:00 p.m. to 2:00 p.m	592	238	6	836
2:00 p.m. to 3:00 p.m	579	240	4	823
3:00 p.m. to 4:00 p.m	714	310	6	1030
4:00 p.m. to 5:00 p.m	723	318	1	1042
5:00 p.m. to 6:00 p.m	673	291	5	969
6:00 p.m. to 7:00 p.m	460	203	2	665
7:00 p.m. to 8:00 p.m	400	159	2	561
8:00 p.m. to 9:00 p.m	320	125	1	446
9:00 p.m. to 10:00 p.m	283	128	1	412
10:00 p.m. to 11:00 p.m	227	91	1	319
11:00 p.m. to 12:00 a.m	173	78	6	257
Not Stated	283	126	0	409
Grand Total	8713	3740	61	12514

Nova Scotia Department of Transportation and Public Works
2003 Motor Vehicle Collision Information
Reportable Traffic Collisions by Light Condition
TCSC Table - 04

<i>Light Condition</i>	<i>Property Damage</i>	<i>Personal Injury</i>	<i>Fatal</i>	<i>Total</i>
Daylight	6238	2700	35	8973
Dark	1602	684	17	2303
Dusk	378	146	3	527
Dawn	75	55	1	131
Artificial light	242	92	5	339
Not Stated	178	63	0	241
Grand Total	8713	3740	61	12514

Nova Scotia Department of Transportation and Public Works
2003 Motor Vehicle Collision Information
Reportable Traffic Collisions by Road Surface Condition
TCSC Table - 05

<i>Road Surface Condition</i>	<i>Property Damage</i>	<i>Personal Injury</i>	<i>Fatal</i>	<i>Total</i>
Dry	5338	2402	47	7787
Snow	891	283	2	1176
Ice	531	186	0	717
Wet	1475	700	9	2184
Muddy	4	4	0	8
Loose Gravel or Sand	34	20	0	54
Slush	242	86	3	331
Fresh Oil	1	0	0	1
Not Stated	197	59	0	256
<i>Grand Total</i>	8713	3740	61	12514

Nova Scotia Department of Transportation and Public Works
2003 Motor Vehicle Collision Information
Reportable Traffic Collisions by Unusual Road Condition
TCSC Table - 06

<i>Road Condition</i>	<i>Property Damage</i>	<i>Personal Injury</i>	<i>Fatal</i>	<i>Total</i>
Under Construction	179	70	0	249
Under Repair	17	7	0	24
Holes, Ruts, Bumps	84	59	0	143
Changing Road Width	22	11	0	33
Flooded	13	6	1	20
Not Stated	8398	3587	60	12045
Grand Total	8713	3740	61	12514

Nova Scotia Department of Transportation and Public Works
2003 Motor Vehicle Collision Information
Reportable Traffic Collisions by Road Surface Type
TCSC Table - 07

<i>Road Surface Type</i>	<i>Property Damage</i>	<i>Personal Injury</i>	<i>Fatal</i>	<i>Total</i>
Asphalt	8264	3573	59	11896
Gravel	199	78	1	278
Dirt/Earth	60	27	0	87
Concrete	17	6	1	24
Chip Seal	11	8	0	19
Not Stated	162	48	0	210
Grand Total	8713	3740	61	12514

*Nova Scotia Department of Transportation and Public Works
2003 Motor Vehicle Collision Information*

Reportable Traffic Collisions By Weather Condition

TCSC Table - 08

<i>Weather Condition</i>	<i>Property Damage</i>	<i>Personal Injury</i>	<i>Fatal</i>	<i>Total</i>
Clear	5558	2327	37	7922
Cloudy	1222	569	13	1804
Raining	750	375	4	1129
Snowing	622	203	3	828
Sleet/Hail/Freezing Rain	100	51	1	152
Fog/Smoke/Smog	89	64	0	153
Drifting Snow/Dust	105	51	0	156
Strong Wind	37	10	3	50
Not Stated	230	90	0	320
<i>Grand Total</i>	<i>8713</i>	<i>3740</i>	<i>61</i>	<i>12514</i>

Nova Scotia Department of Transportation and Public Works
2003 Motor Vehicle Collision Information
Reportable Traffic Collisions By Roadway Class (Urban/Rural)
TCSC Table - 09

<i>Place of Occurrence</i>	<i>Property Damage</i>	<i>Personal Injury</i>	<i>Fatal</i>	<i>Total</i>
Urban Street	4265	1715	5	5985
Private Property (Urban)	804	112	1	917
Alley	4	3	0	7
Service Road	17	12	0	29
Provincial Highway (Urban)	890	432	5	1327
Provincial Highway (Rural)	1980	1185	41	3206
Unnumbered Rural Road	146	96	9	251
Rural Subdivision Street	113	41	0	154
Private Property Rural	154	19	0	173
Ramp	31	12	0	43
Not Stated	309	113	0	422
<i>Grand Total</i>	<i>8713</i>	<i>3740</i>	<i>61</i>	<i>12514</i>

(1) Urban Includes:

- a) Metropolitan roads and streets and other urban areas***
- b) a speed limit at the collision site of 60 km/h or less***

(2) Rural Includes:

- a) primary and secondary highways, as well as local roads***
- b) a speed limit at the collision site exceeding 60 km/h***

Nova Scotia Department of Transportation and Public Works

2003 Motor Vehicle Collision Information

Persons Killed In Reportable Collisions by Road User Class and Age Group

TCSC Table - 10

<i>Road User Class</i>	<i>Age Group</i>									<i>Total</i>	
	<i>1 To 4</i>	<i>5 To 15</i>	<i>16 To 19</i>	<i>20 To 24</i>	<i>25 To 34</i>	<i>35 To 44</i>	<i>45 To 54</i>	<i>55 To 64</i>	<i>65 Or Older</i>		<i>Unspecified</i>
Pedestrian	0	0	1	1	1	0	1	2	3	0	9
Bicyclist	0	0	0	0	0	1	0	0	0	0	1
Motorcycle Passenger	0	0	0	0	0	0	0	0	0	0	0
Motorcycle Driver	0	0	0	1	1	1	0	0	0	0	3
Snowmobile Passenger	0	0	0	0	0	0	0	0	0	0	0
Snowmobile Driver	0	0	0	0	0	0	0	0	0	0	0
Off Hwy. Veh. Passenger	0	0	0	0	0	0	0	0	0	0	0
Off Hwy. Veh. Driver	0	0	1	0	0	0	0	0	0	0	1
Motor Vehicle Passenger	0	1	0	2	3	1	1	0	4	0	12
Motor Vehicle Driver	0	0	1	3	14	11	5	3	7	0	44
Not Stated	0	0	0	0	0	0	0	0	0	0	0
<i>Grand Total</i>	0	1	3	7	19	14	7	5	14	0	70

*Nova Scotia Department of Transportation and Public Works
2003 Motor Vehicle Collision Information*

Persons Injured In Reportable Collisions by Road User Class and Age Group

TCSC Table - 11

<i>Road User Class</i>	<i>Age Group</i>									<i>Unspecified</i>	<i>Total</i>
	<i>1 To 4</i>	<i>5 To 15</i>	<i>16 To 19</i>	<i>20 To 24</i>	<i>25 To 34</i>	<i>35 To 44</i>	<i>45 To 54</i>	<i>55 To 64</i>	<i>65 Or Older</i>		
Pedestrian	3	45	43	29	33	28	27	14	19	88	329
Bicyclist	0	20	9	5	13	8	4	1	0	15	75
Motorcycle Passenger	0	2	3	2	3	3	4	1	0	3	21
Motorcycle Driver	0	0	13	24	19	23	18	13	1	11	122
Snowmobile Passenger	0	0	1	0	0	0	0	0	0	0	1
Snowmobile Driver	0	0	0	0	2	3	0	0	0	0	5
Off Hwy. Veh. Passenger	0	3	3	2	0	2	1	0	1	1	13
Off Hwy. Veh. Driver	0	2	6	8	3	1	6	2	1	2	31
Motor Vehicle	43	165	249	209	227	152	112	85	101	194	1537
Motor Vehicle Driver	0	0	265	332	605	583	437	249	208	315	2994
Not Stated	2	9	13	15	22	18	20	10	6	48	163
<i>Grand Total</i>	48	246	605	626	927	821	629	375	337	677	5291

*Nova Scotia Department of Transportation and Public Works
2003 Motor Vehicle Collision Information*

Persons Killed or Injured In Reportable Collisions by Road User Class and Sex

TCSC Table - 12

<i>Road User Class</i>	<i>Persons Injured</i>			<i>Persons Killed</i>			<i>Total</i>
	<i>Victim Sex</i>			<i>Victim Sex</i>			
	<i>Male</i>	<i>Female</i>	<i>Unknown</i>	<i>Male</i>	<i>Female</i>	<i>Unknown</i>	
Pedestrian	155	157	17	6	3	0	338
Bicyclist	56	18	1	0	1	0	76
Motorcycle Passenger	5	16	0	0	0	0	21
Motorcycle Driver	112	10	0	2	1	0	125
Snowmobile Passenger	0	1	0	0	0	0	1
Snowmobile Driver	5	0	0	0	0	0	5
Off Hwy. Veh. Passenger	8	5	0	0	0	0	13
Off Hwy. Veh. Driver	25	6	0	1	0	0	32
Motor Vehicle Passenger	539	994	4	6	6	0	1549
Motor Vehicle Driver	1488	1502	4	34	10	0	3038
Not Stated	84	78	1	0	0	0	163
<i>Grand Total</i>	2477	2787	27	49	21	0	5361

*Nova Scotia Department of Transportation and Public Works
2003 Motor Vehicle Collision Information*

*Persons Involved In Reportable Traffic Collisions
By Month of Occurrence*

TCSC Table - 13

<i>Month</i>	<i>Not Injured</i>	<i>Injured</i>	<i>Killed</i>	<i>Total</i>
January	2937	510	4	3451
February	2629	411	2	3042
March	2065	355	4	2424
April	1668	375	11	2054
May	1698	383	8	2089
June	1908	442	5	2355
July	2201	490	8	2699
August	2106	512	8	2626
September	1875	443	9	2327
October	2081	493	2	2576
November	1970	443	7	2420
December	2227	434	2	2663
<i>Grand Total</i>	25365	5291	70	30726

*Nova Scotia Department of Transportation and Public Works
2003 Motor Vehicle Collision Information*

*Persons Involved In Reportable Traffic Collisions
By Place of Occurrence*

TCSC Table - 14

<i>Place of Occurrence</i>	<i>Not Injured</i>	<i>Injured</i>	<i>Killed</i>	<i>Total</i>
Urban (1)	18319	3101	11	21431
Rural (2)	6142	2020	59	8221
Not Stated	904	170	0	1074
Grand Total	25365	5291	70	30726

(1) Urban Includes:

- a) Metropolitan roads and streets and other urban areas*
- b) a speed limit at the collision site of 60 km/h or less*

(2) Rural Includes:

- a) primary and secondary highways, as well as local roads*
- b) a speed limit at the collision site exceeding 60 km/h*

*Nova Scotia Department of Transportation and Public Works
2003 Motor Vehicle Collision Information*

*Persons Injured or Killed In Reportable Collisions
by Age Group and Sex*

TCSC Table - 15

<i>Age Group</i>	<i>Persons Injured</i>			<i>Persons Killed</i>			<i>Total</i>
	<i>Victim Sex</i>			<i>Victim Sex</i>			
	<i>Male</i>	<i>Female</i>	<i>Unknown</i>	<i>Male</i>	<i>Female</i>	<i>Unknown</i>	
1 To 4	26	22	0	0	0	0	48
5 To 15	122	122	2	0	1	0	247
16 To 19	290	315	0	3	0	0	608
20 To 24	313	313	0	2	5	0	633
25 To 34	440	486	1	15	4	0	946
35 To 44	405	414	2	10	4	0	835
45 To 54	284	344	1	6	1	0	636
55 To 64	185	189	1	5	0	0	380
65 Or Older	141	195	1	8	6	0	351
Unspecified	271	387	19	0	0	0	677
<i>Grand Total</i>	2477	2787	27	49	21	0	5361

Nova Scotia Department of Transportation and Public Works

2003 Motor Vehicle Collision Information

*Vehicles Involved in Reportable Traffic Collisions
by Vehicle Type and Severity*

TCSC Table - 16

<i>Vehicle Type</i>	<i>Property Damage</i>	<i>Personal Injury</i>	<i>Fatal</i>	<i>Total</i>
Automobile	10312	4358	41	14711
Pickup Trucks 5,000 kg and Under	2104	800	19	2923
Panel/Van 5,000 kg and Under	958	342	9	1309
Trucks Over 5,000 kg	364	114	4	482
Semi Trailer Power Unit	165	50	4	219
Motorcycle	31	122	3	156
Moped/Power Bicycle	3	5	0	8
Bicycle	33	78	1	112
Transit Bus	36	11	1	48
Inter-City Bus	7	3	0	10
School Bus	34	6	1	41
Other Bus	18	2	0	20
Ambulance/Police/Fire	34	9	1	44
Motorhome	15	0	1	16
Snowmobile	4	5	0	9
Construction and Maintenance-Equip	44	15	1	60
Farm Equipment	13	3	0	16
Off Highway Vehicle	9	37	1	47
Not Stated	1632	514	0	2146
Grand Total	15816	6474	87	22377

Nova Scotia Department of Transportation and Public Works

2003 Motor Vehicle Collision Information

*Vehicles Involved in Reportable Traffic Collisions
by Vehicle Condition and Severity*

TCSC Table - 17

<i>Vehicle Condition</i>	<i>Property Damage</i>	<i>Personal Injury</i>	<i>Fatal</i>	<i>Total</i>
Defective Brakes	81	38	0	119
Defective Lights	8	2	0	10
Vision Obstructions/Obscured	189	60	0	249
Defective Steering	19	8	0	27
Defective Suspension/Wheel	10	7	1	18
Defective Tires	21	10	1	32
Defective Tow Hitch/Connection	7	1	0	8
Defective Engine/Power Train	5	4	0	9
Defective Hood/Door Opening	5	1	0	6
Jackknife/Trailer Swing	9	2	0	11
Vehicle Modifications	0	1	0	1
Defective Exhaust	0	1	0	1
Load Shift	6	4	0	10
Electrical	2	0	0	2
Defective Transmission	5	2	0	7
No Apparent Defect	15449	6333	85	21867
Grand Total	15816	6474	87	22377

Nova Scotia Department of Transportation and Public Works

2003 Motor Vehicle Collision Information

*Vehicles Involved in Reportable Traffic Collisions
by Vehicle Maneuver and Severity*

TCSC Table - 18

<i>Vehicle Maneuver</i>	<i>Property Damage</i>	<i>Personal Injury</i>	<i>Fatal</i>	<i>Total</i>
Going Straight Ahead	8135	3915	81	12131
Turning Right	721	223	0	944
Turning Left	1646	674	2	2322
Making U-turn	40	20	1	61
Starting From Parked Position	176	32	0	208
Entering Parked Position	65	5	0	70
Starting in Traffic	148	82	0	230
Slowing or Stopping	640	297	0	937
Stopped in Traffic	1158	686	2	1846
Parked Legally	965	87	0	1052
Parked Illegally	66	3	0	69
Changing Lanes	167	38	0	205
Overtaking	119	50	1	170
Merging	119	51	0	170
Backing	979	103	0	1082
Not Specified	672	208	0	880
Grand Total	15816	6474	87	22377

Nova Scotia Department of Transportation and Public Works

2003 Motor Vehicle Collision Information

*Vehicles Involved in Reportable Traffic Collisions
by Vehicle Year and Severity*

TCSC Table - 19

<i>Vehicle Year</i>	<i>Property Damage</i>	<i>Personal Injury</i>	<i>Fatal</i>	<i>Total</i>
Model Year 2003 Or Newer	1106	406	6	1518
Model Year 2002	1478	523	5	2006
Model Year 2001	1115	407	7	1529
Model Year 2000	1254	429	5	1688
Model Year 1999	1085	439	5	1529
Model Year 1998	1230	443	7	1680
Model Year 1997	1094	464	5	1563
Model Year 1996	798	309	4	1111
Model Year 1995	961	369	4	1334
Model Year 1994	808	399	4	1211
Model Year 1993	800	339	3	1142
Model year 1992 Or Older	3102	1564	31	4697
Unspecified	985	383	1	1369
<i>Grand Total</i>	<i>15816</i>	<i>6474</i>	<i>87</i>	<i>22377</i>

Nova Scotia Department of Transportation and Public Works
2003 Motor Vehicle Collision Information
Drivers Involved in Reportable Traffic Collisions
by Driver Sex and Severity

TCSC Table - 20

<i>Driver Sex</i>	<i>Property Damage</i>	<i>Personal Injury</i>	<i>Fatal</i>	<i>Total</i>
Male	9022	3775	63	12860
Female	5412	2513	24	7949
Unknown	417	104	0	521
<i>Grand Total</i>	<i>14851</i>	<i>6392</i>	<i>87</i>	<i>21330</i>

Nova Scotia Department of Transportation and Public Works

2003 Motor Vehicle Collision Information

*Drivers Involved in Reportable Traffic Collisions
by Driver Condition and Severity*

TCSC Table - 21

<i>Driver Condition</i>	<i>Property Damage</i>	<i>Personal Injury</i>	<i>Fatal</i>	<i>Total</i>
Driver Inattention	3616	1556	7	5179
Driver Distraction	243	112	0	355
Had Been Drinking	123	105	15	243
Driving while Impaired	87	77	3	167
Extreme Fatigue	26	17	0	43
Fell Asleep	50	56	2	108
Driver Inexperienced/Confusion	182	111	7	300
Lost Consciousness	19	26	0	45
Physical Disability	17	5	0	22
Prescription Medication	9	9	0	18
Drugs (Illegal)	3	0	1	4
Illness	25	19	6	50
Other	10451	4299	46	14796
Grand Total	14851	6392	87	21330

Nova Scotia Department of Transportation and Public Works

2003 Motor Vehicle Collision Information

*Drivers Involved in Reportable Traffic Collisions
by Driver Action and Severity*

TCSC Table - 22

<i>Driver Action</i>	<i>Property Damage</i>	<i>Personal Injury</i>	<i>Fatal</i>	<i>Total</i>
Failure to Yield Right-of-Way	322	156	2	480
Traffic Control Device Disregarded	54	35	0	89
Following Too Closely	91	58	0	149
Driving Too Fast for Road Conditions	196	131	6	333
Exceeding Speed Limit	29	25	2	56
Turning Improper	50	17	0	67
Passing or Lane Usage Improper	66	29	0	95
Backing Unsafely	79	13	0	92
Pedestrian Error/Confusion	12	61	5	78
Failed to Signal	12	2	0	14
Wrong Way	3	4	0	7
Crossed Centre Line	25	21	0	46
Other	13912	5840	72	19824
Grand Total	14851	6392	87	21330

Nova Scotia Department of Transportation and Public Works
2003 Motor Vehicle Collision Information
Drivers Involved in Reportable Traffic Collisions
by Age Group and Severity

TCSC Table - 23

<i>Age Group (Years)</i>	<i>Property Damage</i>	<i>Personal Injury</i>	<i>Fatal</i>	<i>Total</i>
Age Group 15 and under	13	36	0	49
Age Group 16-19	1093	544	3	1640
Age Group 20-24	1360	663	5	2028
Age Group 25-34	2407	1174	19	3600
Age Group 35-44	2732	1161	23	3916
Age Group 45-54	2240	930	16	3186
Age Group 55-64	1354	527	10	1891
Age Group 65 and over	1212	470	11	1693
Unspecified	2440	887	0	3327
<i>Grand Total</i>	<i>14851</i>	<i>6392</i>	<i>87</i>	<i>21330</i>

Nova Scotia Department of Transportation and Public Works
2003 Motor Vehicle Collision Information
Drivers Involved in Reportable Traffic Collisions
by Age Group and Severity

TCSC Table - 23

<i>Age Group (Years)</i>	<i>Property Damage</i>	<i>Personal Injury</i>	<i>Fatal</i>	<i>Total</i>
Age Group 15 and under	13	36	0	49
Age Group 16-19	1093	544	3	1640
Age Group 20-24	1360	663	5	2028
Age Group 25-34	2407	1174	19	3600
Age Group 35-44	2732	1161	23	3916
Age Group 45-54	2240	930	16	3186
Age Group 55-64	1354	527	10	1891
Age Group 65-70	454	193	4	651
Age Group 71-75	318	109	3	430
Age Group 76-80	226	86	2	314
Age Group 81 and over	214	82	2	298
Unspecified	2440	887	0	3327
<i>Grand Total</i>	<i>14851</i>	<i>6392</i>	<i>87</i>	<i>21330</i>

Nova Scotia Department of Transportation and Public Works
2003 Motor Vehicle Collision Information
No. of Pedestrians By Pedestrian Action and Age Group

TCSC Table - 24

<i>Pedestrian Action</i>	<i>Age Group</i>									<i>Total</i>	
	<i>1 To 4</i>	<i>5 To 15</i>	<i>16 To 19</i>	<i>20 To 24</i>	<i>25 To 34</i>	<i>35 To 44</i>	<i>45 To 54</i>	<i>55 To 64</i>	<i>65 Or Older</i>		<i>Unspec-ified</i>
Crossing With Signal	0	5	4	5	7	1	2	0	2	10	36
Crossing Against Signal	0	1	1	0	1	0	0	1	0	4	8
Crossing Marked Crosswalk, No Signal	0	8	14	13	8	11	10	4	6	31	105
Crossing, No Signal or Crosswalk	1	8	3	7	3	2	6	2	7	17	56
Crossing (Mid Block or Roadway)	0	0	2	0	1	1	2	3	3	4	16
Walking Along Roadway with Traffic	0	0	2	3	0	0	0	0	1	0	6
Walking Along Roadway Against Traffic	0	1	1	1	0	1	0	0	0	3	7
Emerging From In Front or Behind Parked vehicle	1	2	1	1	3	4	2	0	3	3	20
Running Into Road	1	14	4	0	0	0	1	1	0	11	32
Getting On/Off School Bus	0	1	0	0	0	0	0	0	0	0	1
Getting On/Off Vehicle Other Than School Bus	0	0	3	1	1	0	0	2	1	2	10
On Sidewalk / Shoulder / Boulevard (Not On Roadway)	1	3	8	4	8	7	6	3	3	20	63
Pushing Or Working on Vehicle	0	0	0	1	1	1	0	0	0	0	3
Walking On Roadway	0	0	2	2	3	2	4	2	0	3	18

<i>Pedestrian Action</i>	<i>Age Group</i>									<i>Unspeci- fied</i>	<i>Total</i>
	<i>1 To 4</i>	<i>5 To 15</i>	<i>16 To 19</i>	<i>20 To 24</i>	<i>25 To 34</i>	<i>35 To 44</i>	<i>45 To 54</i>	<i>55 To 64</i>	<i>65 Or Older</i>		
Playing On Roadway	0	2	1	0	0	0	0	0	0	0	3
Lying On Roadway	0	0	1	0	0	1	0	0	0	1	3
Hitch Hiking	0	0	0	0	0	0	0	0	0	0	0
Working On Roadway	0	0	0	1	2	1	0	0	0	2	6
Not Stated	0	0	0	0	0	0	0	0	0	0	0
<i>Grand Total</i>	4	45	47	39	38	32	33	18	26	111	393

*Nova Scotia Department of Transportation and Public Works
2003 Motor Vehicle Collision Information*

*No. of Pedestrians in Reportable Traffic Collisions
By Collision Site and Injury Severity*

TCSC Table - 26

<i>Place of Occurrence</i>	<i>Not Injured</i>	<i>Injured</i>	<i>Killed</i>	<i>Total</i>
Non-Intersection (Mid-Block, Including Ramp)	28	177	8	213
Intersection Related	17	91	1	109
Unspecified	10	61	0	71
<i>Grand Total</i>	55	329	9	393

Nova Scotia Department of Transportation and Public Works
2003 Motor Vehicle Collision Information
Reportable Traffic Collisions by Collision Configuration

<i>Accident Configuration</i>	<i>Property Damage</i>	<i>Personal Injury</i>	<i>Fatal</i>	<i>Total</i>
Struck Object	860	529	11	1400
Off Road Left	244	215	11	470
Off Road Right	315	255	12	582
Rear End	1485	934	0	2419
Right Angle	1047	390	1	1438
Sideswipe, Same Direction	264	43	0	307
Sideswipe, Opposite Direction	162	68	4	234
Head On	113	87	14	214
Left Turn, Head On	367	194	4	565
Passing, Left Turn	213	72	1	286
Passing, Right Turn	146	34	0	180
Other, Specify	3357	892	3	4252
Not Stated	140	27	0	167
<i>Grand Total</i>	<i>8713</i>	<i>3740</i>	<i>61</i>	<i>12514</i>

Nova Scotia Department of Transportation and Public Works
2003 Motor Vehicle Collision Information
Reportable Traffic Collisions by County

<i>County</i>	<i>Property Damage</i>	<i>Personal Injury</i>	<i>Fatal</i>	<i>Total</i>
Annapolis	158	52	1	211
Antigonish	174	57	2	233
Cape Breton	737	452	5	1194
Colchester	496	236	5	737
Cumberland	259	115	3	377
Digby	145	62	4	211
Guysborough	39	20	0	59
Halifax	4444	1631	12	6087
Hants	244	164	8	416
Inverness	162	92	1	255
Kings	476	228	9	713
Lunenburg	424	173	3	600
Pictou	399	182	1	582
Queens	81	48	2	131
Richmond	50	26	0	76
Shelburne	141	69	1	211
Victoria	59	39	3	101
Yarmouth	225	94	1	320
<i>Grand Total</i>	8713	3740	61	12514

Nova Scotia Department of Transportation and Public Works
2003 Motor Vehicle Collision Information
Persons Killed by Road User Class and Month of Occurrence

Victim Class

<i>Month of Occurrence</i>	Pedestrian	Bicyclist	Motorcycle	Motorcycle	Snowmobile	Snowmobile	Off Hwy.	Off Hwy.	Motor	Motor	Not Stated	Total
			Passenger	Driver	Passenger	Driver	Veh. Passenger	Veh. Driver	Veh. Passenger	Veh. Driver		
January	0	0	0	0	0	0	0	0	0	4	0	4
February	1	0	0	0	0	0	0	0	0	1	0	2
March	0	0	0	0	0	0	0	0	0	4	0	4
April	0	0	0	0	0	0	0	0	5	6	0	11
May	0	0	0	0	0	0	0	0	1	7	0	8
June	0	0	0	0	0	0	0	0	1	4	0	5
July	1	0	0	1	0	0	0	1	2	3	0	8
August	2	1	0	1	0	0	0	0	1	3	0	8
September	1	0	0	1	0	0	0	0	2	5	0	9
October	1	0	0	0	0	0	0	0	0	1	0	2
November	2	0	0	0	0	0	0	0	0	5	0	7
December	1	0	0	0	0	0	0	0	0	1	0	2
Not Stated	0	0	0	0	0	0	0	0	0	0	0	0
Grand Total	9	1	0	3	0	0	0	1	12	44	0	70

Nova Scotia Department of Transportation and Public Works

2003 Motor Vehicle Collision Information

Vehicles Involved in Reportable Traffic Collisions by Vehicle Type and Vehicle Year

Vehicle Year

<i>Vehicle Type</i>	2003 Or Newer	2002	2001	2000	1999	1998	1997	1996	1995	1994	1993	1992 Or Older	Unspecified	Total
Automobile	995	1382	1020	1094	995	1134	1087	775	948	840	844	3187	410	14711
Pickup Trucks 5,000 kg and Under	203	257	214	240	216	211	204	131	130	148	118	751	100	2923
Panel/Van 5,000 kg and Under	111	133	99	136	117	126	85	67	76	77	59	177	46	1309
Trucks Over 5,000 kg	38	31	32	49	47	42	29	29	32	22	14	88	29	482
Semi Trailer Power Unit	21	16	18	22	26	21	14	13	23	13	7	16	9	219
Motorcycle	20	15	16	6	11	6	4	4	2	3	2	59	8	156
Moped/Power Bicycle	0	1	1	1	0	0	1	0	0	0	1	3	0	8
Bicycle	2	3	1	2	0	0	1	0	0	0	1	1	101	112
Transit Bus	0	7	1	3	2	3	0	7	6	4	2	9	4	48
Inter-City Bus	1	3	0	0	0	1	0	1	0	0	0	3	1	10
School Bus	2	0	1	3	2	6	3	2	4	1	2	13	2	41
Other Bus	1	1	1	0	0	3	3	0	0	3	2	5	1	20
Ambulance/Police/Fire	7	6	15	2	3	0	5	0	1	0	1	3	1	44
Motorhome	1	1	0	1	1	0	1	2	0	0	0	9	0	16
Snowmobile	0	0	0	0	0	0	0	1	1	1	1	3	2	9
Construction and Maintenance-Equip	2	1	2	4	3	3	3	3	4	5	0	23	7	60
Farm Equipment	1	2	0	2	0	1	0	0	1	1	1	4	3	16
Off Highway Vehicle	12	3	11	2	1	0	1	0	0	0	0	10	7	47
Not Stated	101	144	97	121	105	123	122	76	106	93	87	333	638	2146
<i>Grand Total</i>	1518	2006	1529	1688	1529	1680	1563	1111	1334	1211	1142	4697	1369	22377

Nova Scotia Department of Transportation and Public Works
2003 Motor Vehicle Collision Information
Vehicles Involved in Reportable Traffic Collisions
by Environmental Condition and Severity

<i>Environmental Condition</i>	<i>Property Damage</i>	<i>Personal Injury</i>	<i>Fatal</i>	<i>Total</i>
Animal Action (Deer)	365	33	0	398
Animal Action (Other Wild)	29	23	0	52
Animal Action (Domestic)	41	12	0	53
Surface Slippery	920	339	3	1262
Loose Gravel	27	19	0	46
Snow Drift	64	24	0	88
Obstruction/Debris	40	15	0	55
View Obstructed/Limited	136	61	0	197
Glare	39	25	1	65
Construction Zone	10	2	0	12
Defective Driving Surface	16	5	0	21
Shoulders Defective/Inadequate	4	2	0	6
Lane Markings Inadequate	3	1	0	4
Traffic Control Device Not Working	6	6	0	12
Crosswind	8	6	2	16
Hydroplaning	65	41	0	106
Uninvolved Vehicle	109	38	0	147
Uninvolved Pedestrian	44	17	0	61
Not Stated	13890	5805	81	19776
Grand Total	15816	6474	87	22377

***Nova Scotia Department of Transportation and Public Works
2003 Motor Vehicle Collision Information***

No. of Victims by Use of Safety Devices and Injury Degree

<i>Safety Equipment</i>	<i>Injury Degree</i>							<i>Total</i>
	Not Injured	Minor - No Treatment	Moderate - Treated and Released	Major - Hospitalized	Fatal - At Scene or DOA	Fatal - Within 48 Hours	Fatal - Within 30 Days	
Lap & Shoulder Belt	19915	1652	2201	141	29	2	1	23941
Lap Belt	493	37	46	8	0	0	0	584
Lap Belt & Air Bags	117	19	32	3	0	0	0	171
Air Bags	35	9	8	0	0	0	0	52
Passive Seatbelts	3	3	0	0	0	0	0	6
Child Restraint	474	22	22	0	0	0	0	518
Helmets	38	32	84	27	4	0	1	186
Protective Clothing	1	1	1	1	0	0	0	4
None Available	120	21	50	17	0	0	0	208
Available not Used	291	49	145	42	18	2	1	548
Not Stated	3823	117	143	29	3	0	0	4115
<i>Grand Total</i>	25310	1962	2732	268	54	4	3	30333

This Table Excludes Pedestrian

***Nova Scotia Department of Transportation and Public Works
2003 Motor Vehicle Collision Information***

***No. of Victims By Vehicle Damage Location and Injury Degree
Using the First Location of Damage***

<i>Damage Location</i>	<i>Injury Degree</i>							<i>Total</i>
	Not Injured	Minor - No Treatment	Moderate - Treated and Released	Major - Hospitalized	Fatal - At Scene or DOA	Fatal - Within 48 Hours	Fatal - Within 30 Days	
Right Front	2811	182	227	16	6	0	0	3242
Right Center	981	47	85	3	2	0	1	1119
Right Rear	961	62	69	2	0	0	0	1094
Rear	3474	478	560	8	0	0	0	4520
Left Rear	831	31	52	3	0	0	0	917
Left Center	970	72	91	10	1	0	0	1144
Left Front	2308	140	186	20	6	1	1	2662
Front	7506	521	745	70	14	0	1	8857
Top	227	48	48	7	4	0	0	334
Undercarriage	75	6	14	5	0	0	0	100
Interior	1	0	0	0	0	0	0	1
More Than Three Areas	900	236	458	102	20	3	0	1719
Not Stated	4265	139	197	22	1	0	0	4624
<i>Grand Total</i>	25310	1962	2732	268	54	4	3	30333

This Table Excludes Pedestrian

***Nova Scotia Department of Transportation and Public Works
2003 Motor Vehicle Collision Information***

No. of Victims by Occupant Position and Injury Degree

<i>Occupant Position</i>	<i>Injury Degree</i>							<i>Total</i>
	Not Injured	Minor - No Treatment	Moderate - Treated and Released	Major - Hospitalized	Fatal - At Scene or DOA	Fatal - Within 48 Hours	Fatal - Within 30 Days	
Driver	17938	1329	1823	191	44	3	2	21330
Passenger Position 2	235	25	37	13	1	0	0	311
Passenger Position 3	4366	418	639	43	5	1	1	5473
Passenger Position 4	886	72	82	5	1	0	0	1046
Passenger Position 5	402	27	26	5	1	0	0	461
Passenger Position 6	1139	73	104	9	1	0	0	1326
Passenger Position 7	253	15	15	1	1	0	0	285
Riding or Hanging On	3	1	2	1	0	0	0	7
Not Stated	88	2	4	0	0	0	0	94
<i>Grand Total</i>	25310	1962	2732	268	54	4	3	30333

This Table Excludes Pedestrian

Nova Scotia Department of Transportation and Public Works
2003 Motor Vehicle Collision Information
No. of Vehicles By Vehicle Damage Location
Using the First Location of Damage

<i>Damage Location</i>	<i>Property Damage</i>	<i>Personal Injury</i>	<i>Fatal</i>	<i>Total</i>
Right Front	1761	543	5	2309
Right Center	624	162	3	789
Right Rear	655	159	0	814
Rear	2091	1072	0	3163
Left Rear	608	113	0	721
Left Center	720	183	1	904
Left Front	1496	441	8	1945
Front	4326	1974	36	6336
Top	124	78	5	207
Undercarriage	54	21	0	75
Interior	1	0	0	1
More Than Three Areas	489	600	27	1116
Not Stated	2867	1128	2	3997
<i>Grand Total</i>	<i>15816</i>	<i>6474</i>	<i>87</i>	<i>22377</i>

Nova Scotia Department of Transportation and Public Works

2003 Motor Vehicle Collision Information

*Vehicles Involved in Reportable Traffic Collisions
by First Contributing Factor and Severity*

<i>Contributing Factor</i>	<i>Property Damage</i>	<i>Personal Injury</i>	<i>Fatal</i>	<i>Total</i>
Driver Inattention	3671	1560	7	5238
Driver Distraction	244	112	0	356
Had Been Drinking	126	105	15	246
Driving while Impaired	87	76	3	166
Extreme Fatigue	26	17	0	43
Fell Asleep	50	56	2	108
Driver Inexperienced/Confusion	183	111	7	301
Lost Consciousness	19	26	0	45
Physical Disability	18	5	0	23
Prescription Medication	9	9	0	18
Drugs (Illegal)	3	0	1	4
Illness	25	19	6	50
Failure to Yield Right-of-Way	322	156	2	480
Traffic Control Device Disregarded	54	35	0	89
Following Too Closely	91	58	0	149
Driving Too Fast for Road Conditions	196	131	6	333
Exceeding Speed Limit	29	25	2	56
Turning Improper	50	17	0	67
Passing or Lane Usage Improper	66	29	0	95
Backing Unsafely	80	13	0	93
Pedestrian Error/Confusion	12	61	5	78
Failed to Signal	12	2	0	14
Wrong Way	3	4	0	7

<i>Contributing Factor</i>	<i>Property Damage</i>	<i>Personal Injury</i>	<i>Fatal</i>	<i>Total</i>
Crossed Centre Line	26	21	0	47
Brakes	81	38	0	119
Lights	8	2	0	10
Vision Obstructions/Obscured	189	60	0	249
Steering	19	8	0	27
Suspension/Wheel Failure	10	7	1	18
Tires	21	10	1	32
Defective Tow Hitch/Connection	7	1	0	8
Engine/Power Train	5	4	0	9
Hood/Door Opening	5	1	0	6
Jackknife/Trailer Swing	9	2	0	11
Vehicle Modifications	0	1	0	1
Exhaust	0	1	0	1
Load Shift	6	4	0	10
Electrical	2	0	0	2
Transmission	5	2	0	7
Animal Action (Deer)	365	33	0	398
Animal Action (Other Wild)	29	23	0	52
Animal Action (Domestic)	41	12	0	53
Surface Slippery	920	339	3	1262
Loose Gravel	27	19	0	46
Snow Drift	64	24	0	88
Obstruction/Debris	40	15	0	55
View Obstructed/Limited	136	61	0	197
Glare	39	25	1	65
Construction Zone	10	2	0	12
Defective Driving Surface	16	5	0	21
Shoulders Defective/Inadequate	4	2	0	6

<i>Contributing Factor</i>	<i>Property Damage</i>	<i>Personal Injury</i>	<i>Fatal</i>	<i>Total</i>
Lane Markings Inadequate	3	1	0	4
Traffic Control Device Not Working	6	6	0	12
Crosswind	8	6	2	16
Hydroplaning	65	41	0	106
Uninvolved Vehicle	109	38	0	147
Uninvolved Pedestrian	44	17	0	61
Not Stated	8121	3016	23	11160
<i>Grand Total</i>	<i>15816</i>	<i>6474</i>	<i>87</i>	<i>22377</i>

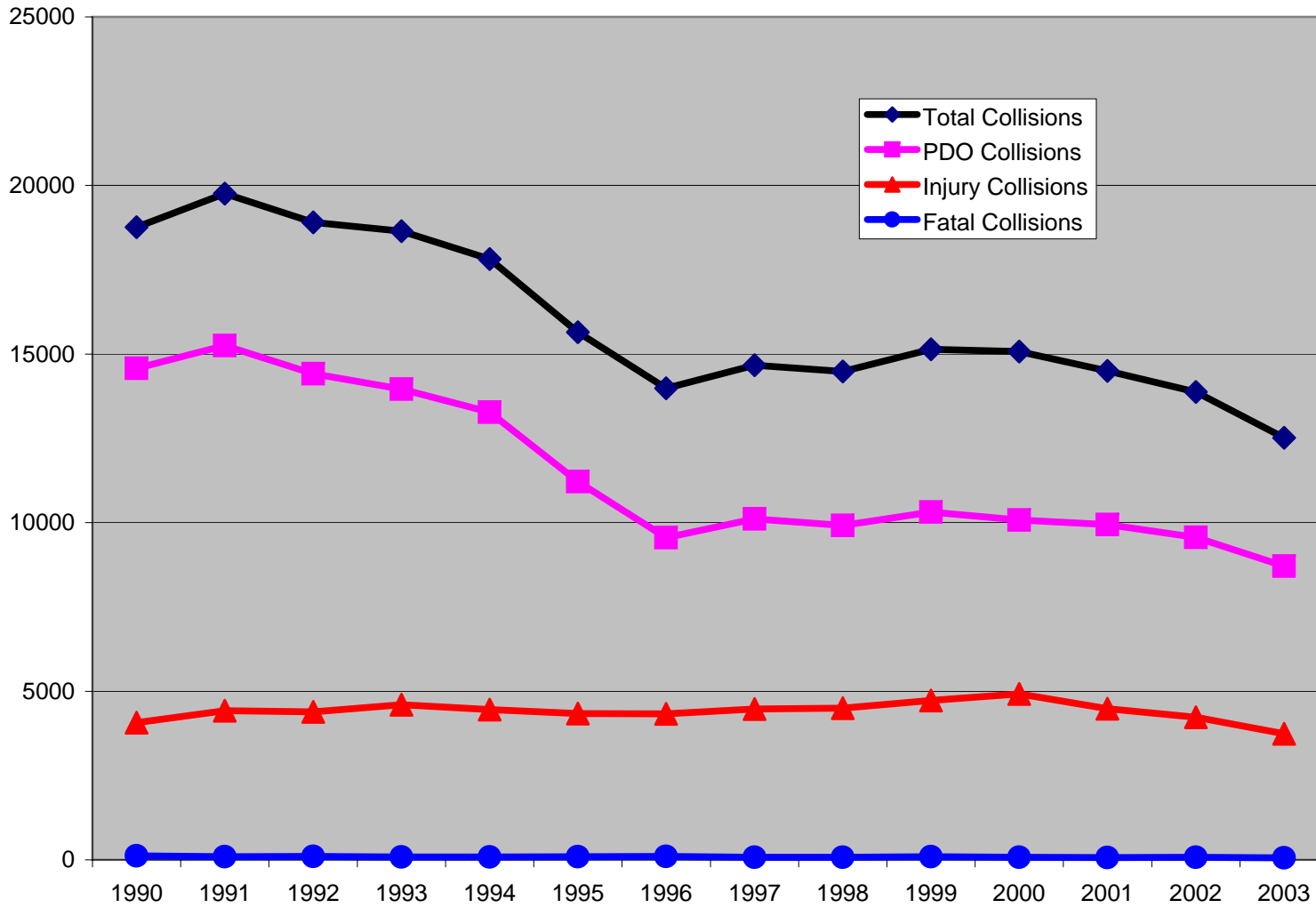
*Nova Scotia Department of Transportation and Public Works
Highway Engineering Services
Asset Management*

Comparison between Collision Statistics and Alcohol Related Collision Statistics

Alcohol Statistics - Year 2003

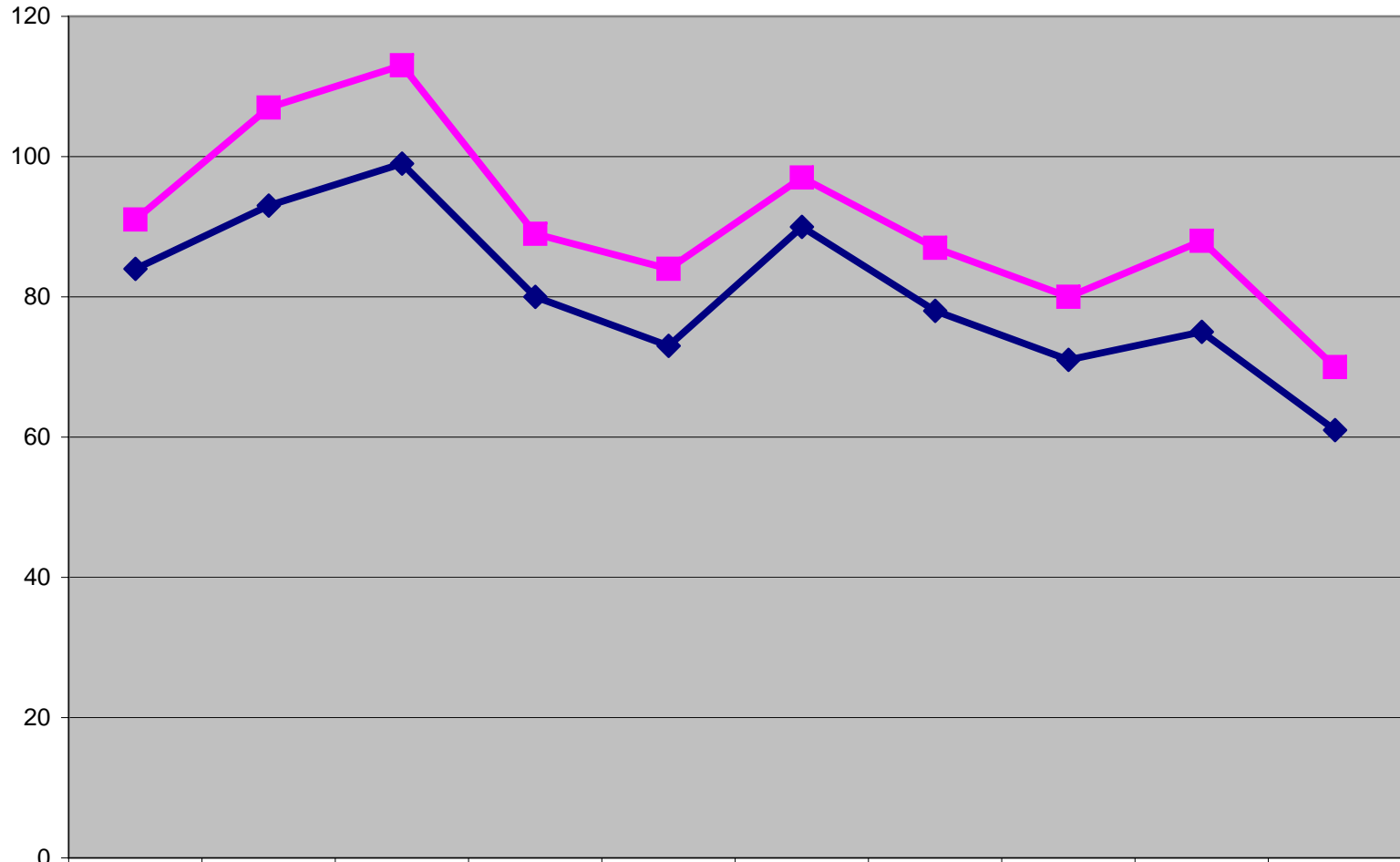
<i>Description</i>	<i>Statistics</i>
TOTAL NUMBER OF COLLISIONS	12514
TOTAL NUMBER OF PROPERTY DAMAGE COLLISIONS	8713
TOTAL NUMBER OF INJURY COLLISIONS	3740
TOTAL NUMBER OF FATAL COLLISIONS	61
TOTAL NUMBER OF INJURIES	5291
TOTAL NUMBER OF FATALITIES	70
TOTAL NUMBER OF COLLISIONS - ALCOHOL	497
TOTAL NUMBER OF PROPERTY DAMAGE COLLISIONS - ALCOHOL	260
TOTAL NUMBER OF INJURY COLLISIONS - ALCOHOL	219
TOTAL NUMBER OF FATAL COLLISIONS - ALCOHOL	18
TOTAL NUMBER OF INJURIES - ALCOHOL	336
TOTAL NUMBER OF FATALITIES - ALCOHOL	20

Collisions by Severity



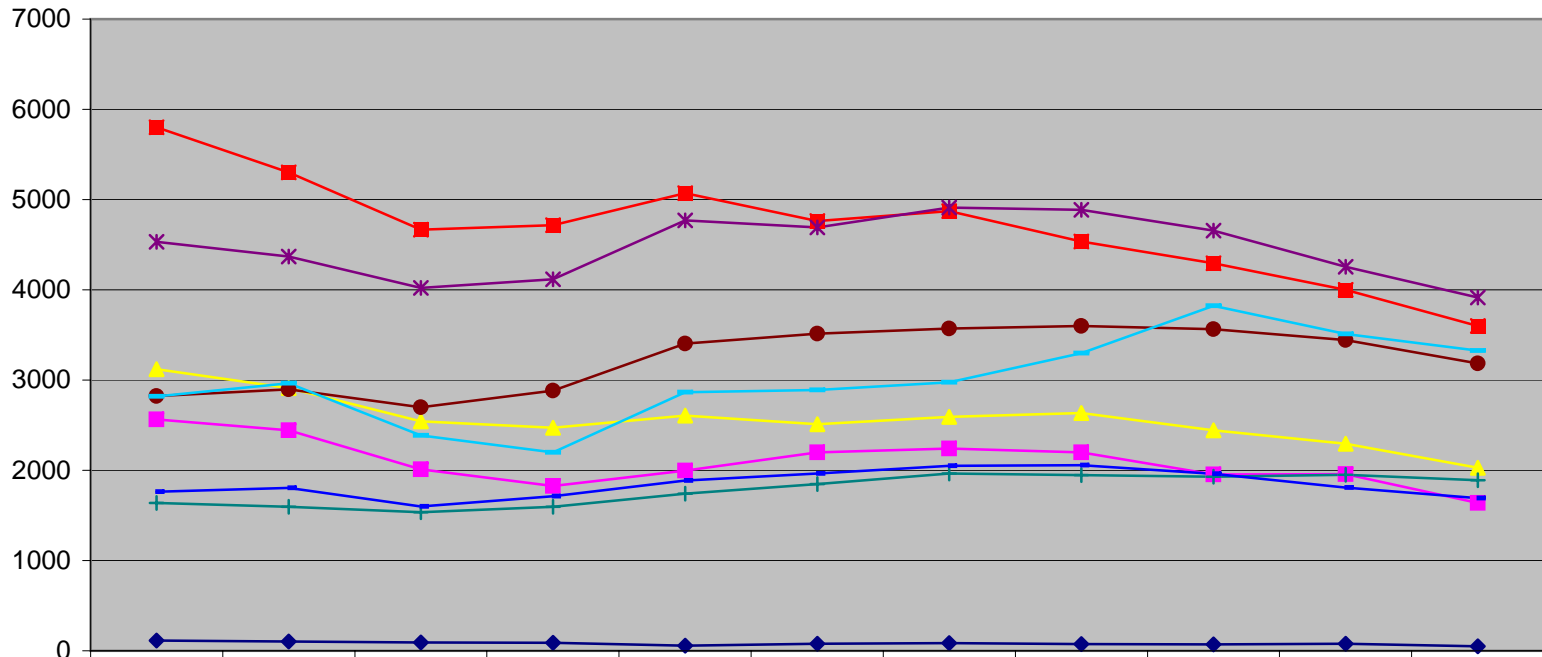
(note that fatals don't show at this scale)

Fatalities & Fatal Collisions



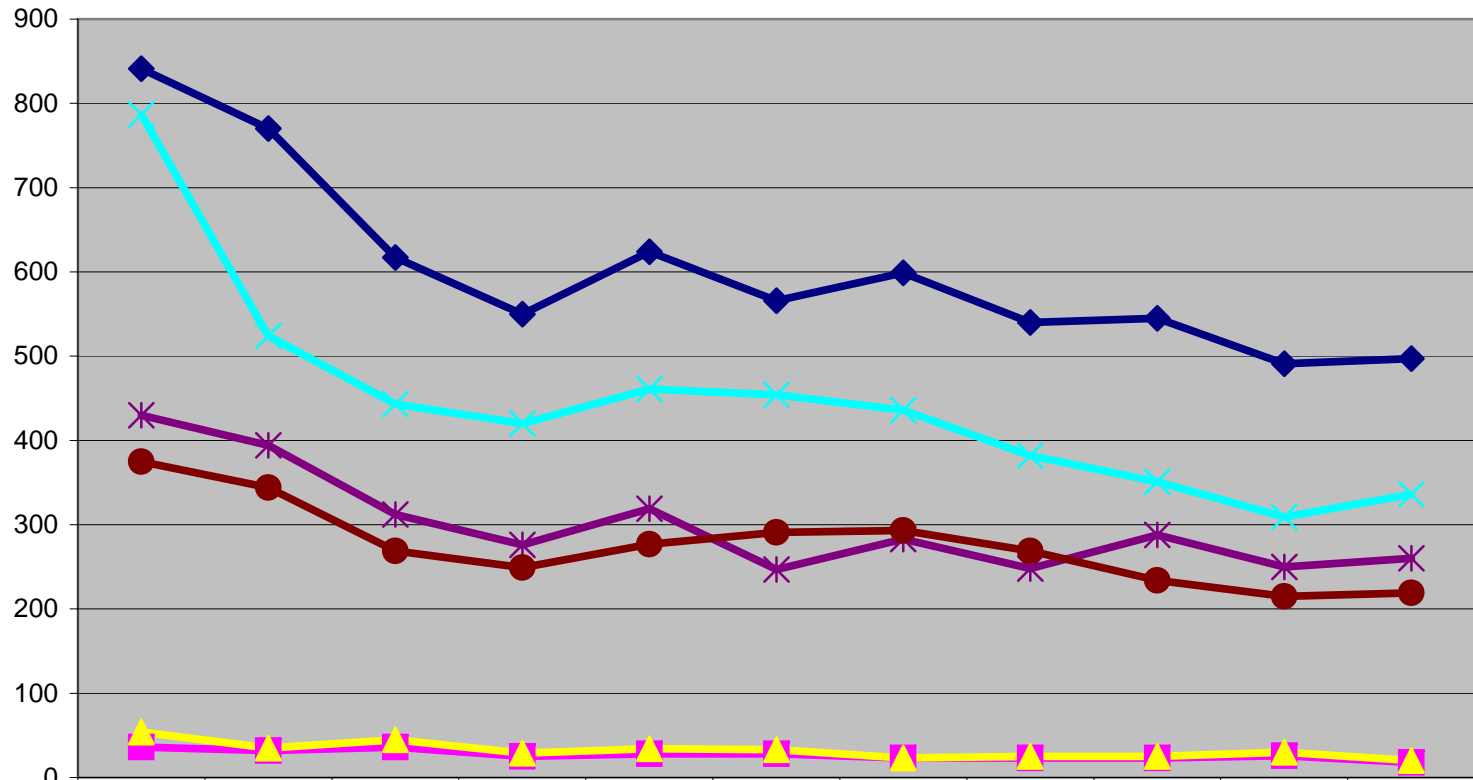
◆ Fatal Collisions	84	93	99	80	73	90	78	71	75	61
■ Fatalities (People)	91	107	113	89	84	97	87	80	88	70

Drivers Involved in Collisions by Age



	1993	1994	1995	1996	1997	1998	1999	2000	2001	2002	2003
◆ Drivers 15 & Under	113	102	91	87	55	79	86	73	70	79	49
■ Drivers 16-19	2565	2443	2011	1828	1997	2197	2242	2200	1954	1957	1640
▲ Drivers 20-24	3122	2913	2544	2471	2605	2511	2591	2633	2444	2296	2028
■ Drivers 25-34	5803	5303	4665	4715	5070	4762	4871	4534	4295	4000	3600
* Drivers 35-44	4533	4370	4023	4117	4771	4693	4911	4885	4656	4256	3916
● Drivers 45-54	2823	2898	2700	2883	3403	3513	3570	3599	3565	3442	3186
+ Drivers 55-64	1639	1594	1535	1595	1740	1846	1966	1948	1930	1952	1891
+ Drivers 65 & Over	1761	1806	1600	1712	1885	1965	2051	2055	1960	1810	1693
+ Unspecified	2820	2963	2388	2198	2866	2889	2976	3298	3821	3509	3327

Alcohol Related Collisions & Severity



	1993	1994	1995	1996	1997	1998	1999	2000	2001	2002	2003
◆ Alcohol Collisions	841	770	617	550	624	566	599	540	545	491	497
■ Alcohol Fatal Collisions	36	32	36	25	28	28	23	23	23	26	18
▲ Alcohol Fatalities	54	35	45	29	34	33	23	25	25	30	20
✕ Alcohol Injuries	787	524	443	420	461	454	436	382	351	309	336
* Alcohol PDO Collisions	430	394	312	276	319	247	283	248	288	250	260
● Alcohol Injury Collisions	375	344	269	249	277	291	293	269	234	215	219